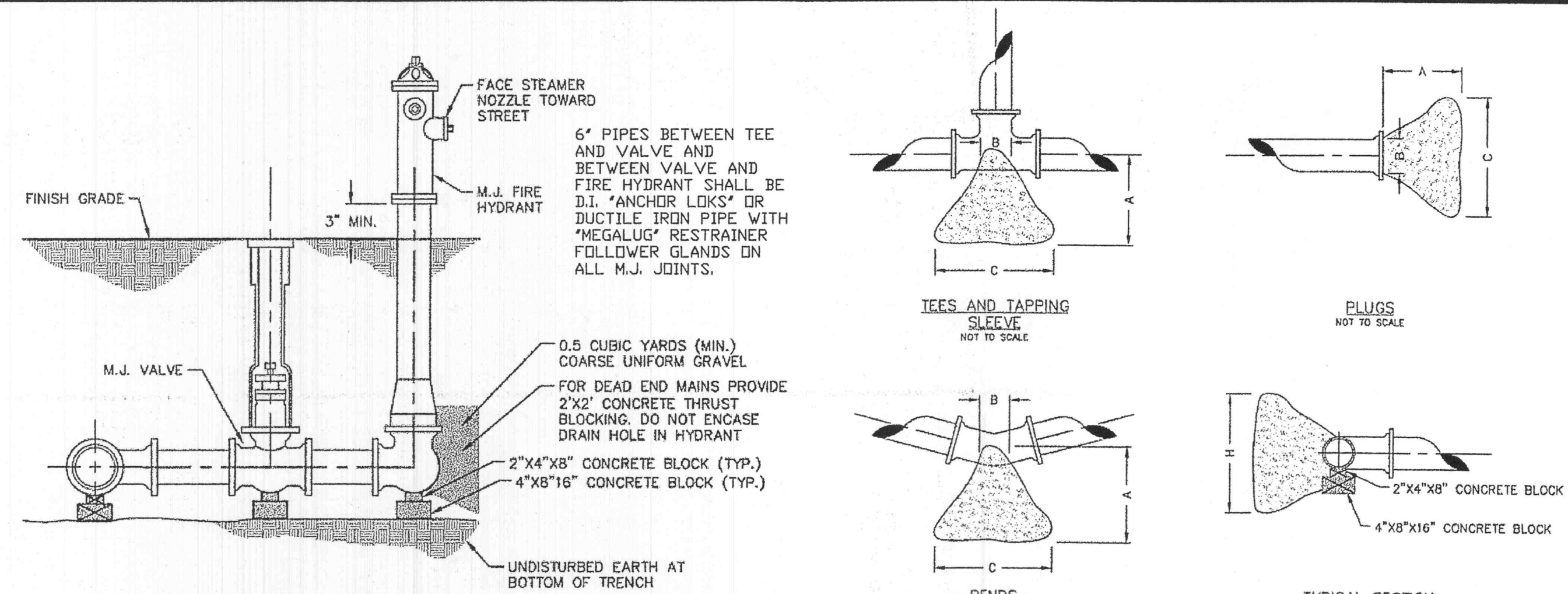


# GENERAL NOTES

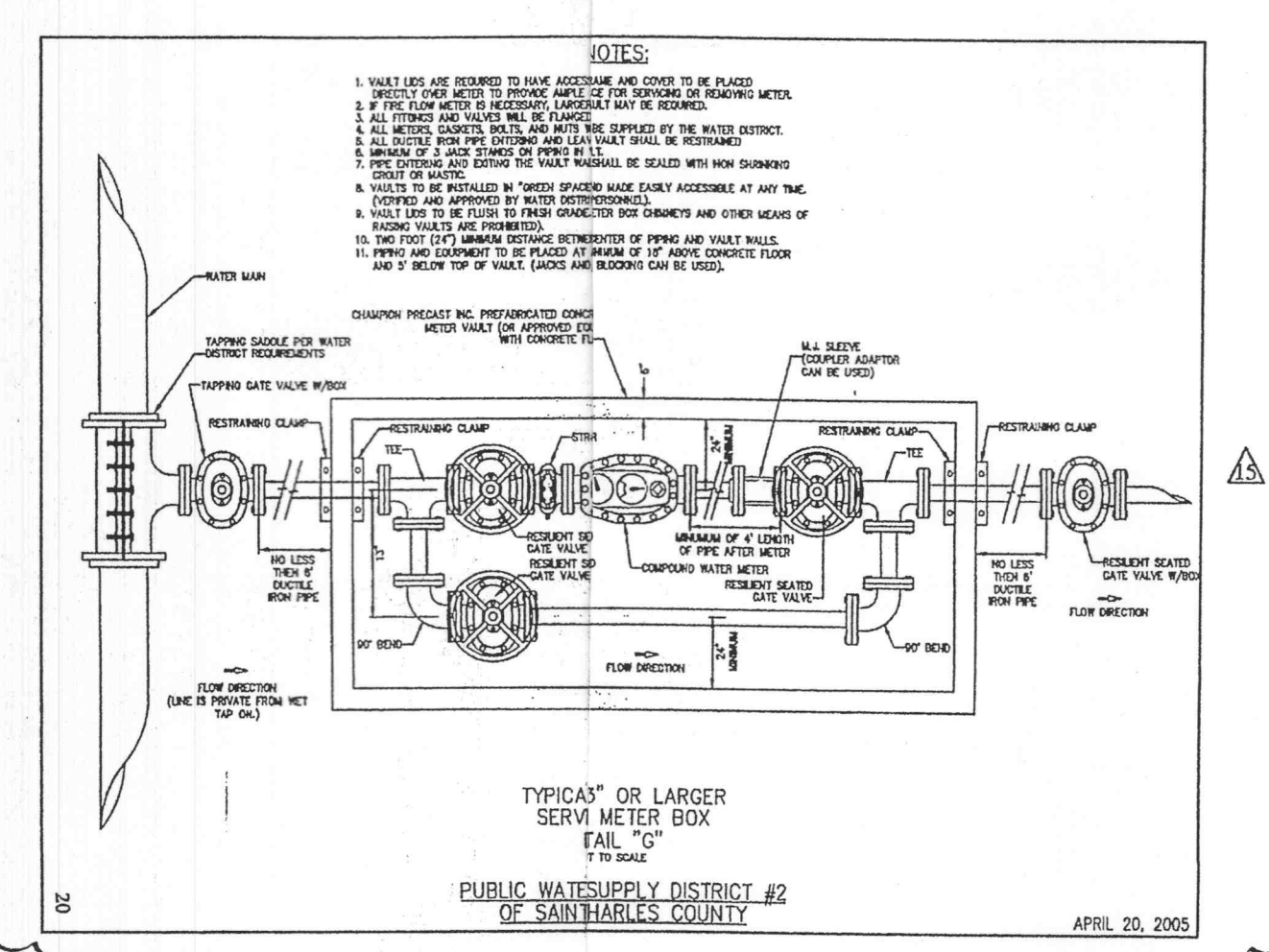
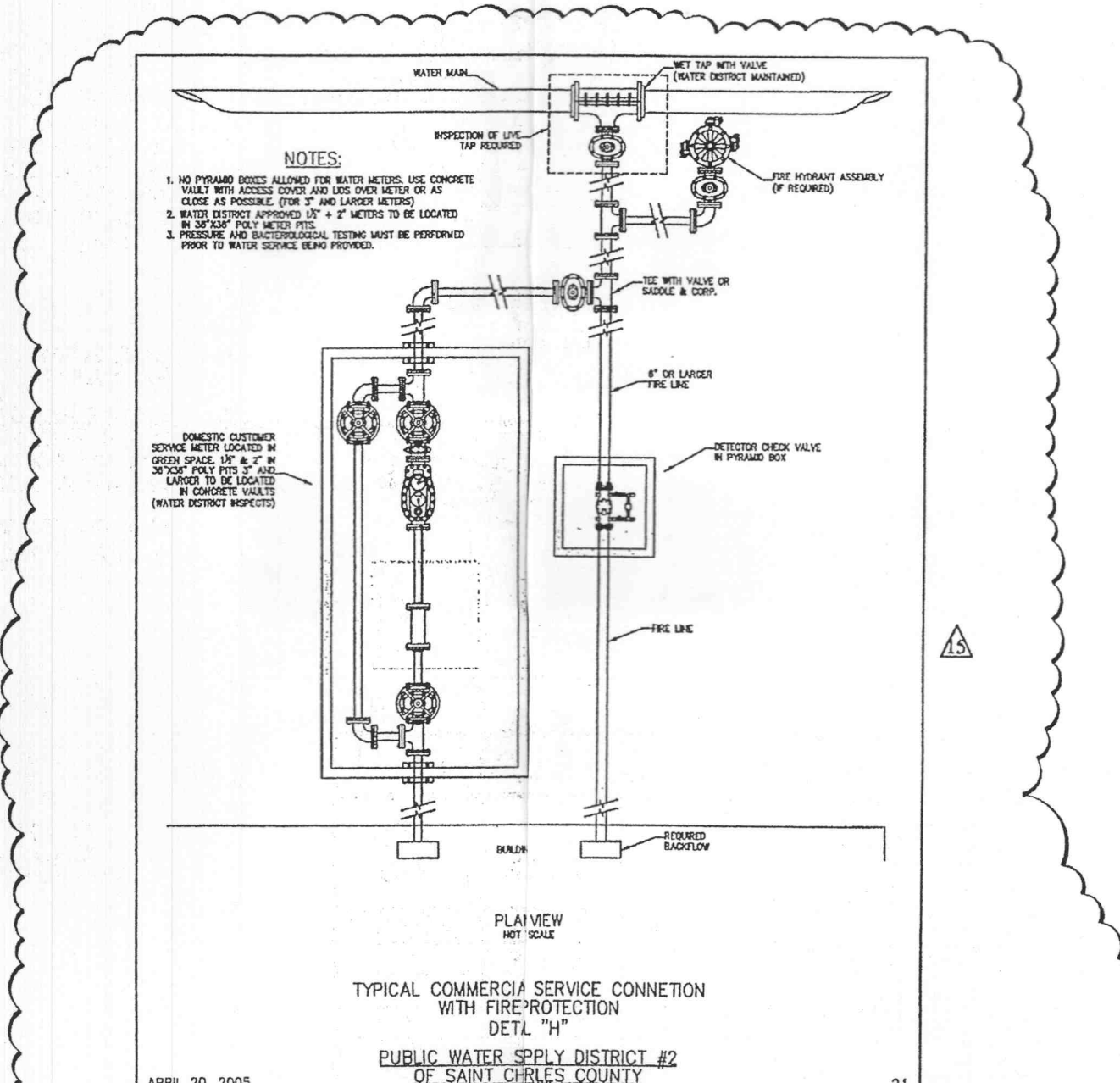
- THE DOMESTIC WATER LINE SHALL CONSIST OF APPROXIMATELY 165' LF OF 6"Ø SDR 21, CLASS 200 PVC PIPE AND 375' OF 8"Ø SDR 21, CLASS 200 PVC PIPE.
- WATER LINES SHALL HAVE A MIN. 10 FEET HORIZONTAL CLEARANCE AND 18 INCHES VERTICAL CLEARANCE (MEASURED FROM EDGE OF PIPE TO EDGE OF PIPE) FROM ALL SANITARY SEWER LINES.
- WATER LINES SHALL HAVE A MINIMUM OF 42 INCHES OF COVER, UNLESS OTHERWISE NOTED, MEASURED FROM THE TOP OF FINISHED GROUND TO THE TOP OF PIPE.
- THERE SHALL BE A MINIMUM OF 18 INCHES CLEARANCE MEASURED FROM THE BOTTOM OF ANY STORMWATER PIPE TO THE TOP OF WATER LINES AT ALL CROSSINGS.
- AT WATER AND SANITARY SEWER CROSSINGS, THE FULL LENGTH OF WATER PIPE SHALL BE LOCATED SO BOTH JOINTS WILL BE AS FAR FROM SEWER AS POSSIBLE. SPECIAL STRUCTURAL SUPPORT FOR THE WATER AND SEWER PIPES MAY BE REQUIRED.
- THE GENERAL CONTRACTOR SHALL TAKE ALL PRECAUTIONS NECESSARY TO AVOID PROPERTY DAMAGE TO ADJACENT PROPERTIES DURING THE CONSTRUCTION PHASES OF THIS PROJECT.
- CONTRACTOR IS TO REMOVE AND DISPOSE OF ALL DEBRIS, RUBBISH AND OTHER MATERIALS RESULTING FROM DEMOLITION OPERATIONS. DISPOSAL WILL BE IN ACCORDANCE WITH ALL LOCAL, STATE AND/OR FEDERAL REGULATIONS GOVERNING SUCH OPERATIONS.
- NOTICE TO CONTRACTOR: PRIOR TO INSTALLATION OF WATER LINE, THE CONTRACTOR SHALL EXCAVATE, VERIFY, AND CALCULATE ALL CROSSINGS AND INFORM THE OWNER AND WALLACE ARCHITECTS OF ANY CONFLICTS PRIOR TO CONSTRUCTION.
- COORDINATE ALL CONSTRUCTION WITH THE ST. CHARLES COUNTY P.W.S.D. #2. NOTIFY THE DISTRICT AT LEAST 48 HOURS IN ADVANCE.
- POINT OF CONTACT FOR WATER INFORMATION IS PWS#2 OF ST. CHARLES COUNTY, 100 WATER DR., OFALLON, MO 63366-561-3737
- ALL WATER MAINS, VALVES, FITTINGS, HYDRANTS, AND RELATED ITEMS ARE TO BE INSTALLED IN ACCORDANCE WITH THE CURRENT ST. CHARLES COUNTY PWS#2 GUIDELINES AND SPECIFICATIONS AS APPROVED BY MDNR REVIEW NO. 61996-04R.
- REMOVE EXISTING PORTION OF WATERLINE IDENTIFIED ON SHEET C2.0 WHICH IMPACTS NEW CONSTRUCTION.



**FIRE HYDRANT AND GATE VALVE DETAILS**  
NOT TO SCALE

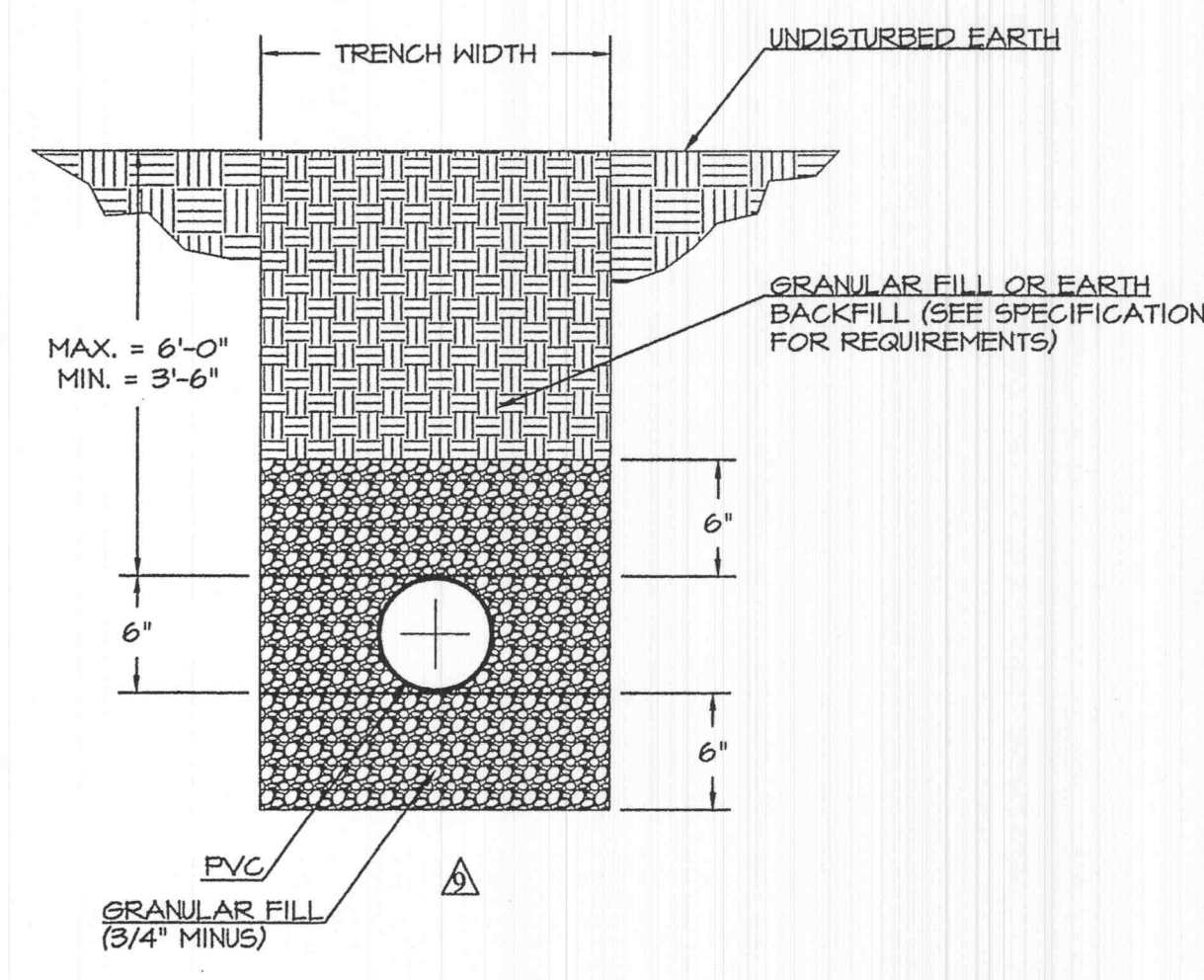
PIPE DIA.	THrust Block Dimensions - Inches									
	All Fgts.	TEE PLUG TAPPING	90 DEGREE BEND	45 DEGREE BEND	22-1/2 BEND	11-1/4 BEND				
4	14	4	24	12	28	15	18	12	12	12
6	16	6	36	18	36	24	30	18	24	12
8	20	8	36	30	42	36	36	24	24	18
10	20	10	48	36	66	36	36	36	28	18
12	24	12	48	36	82	42	52	36	40	28

**PWS# 2 TYPICAL THRUST BLOCKING**  
NOT TO SCALE

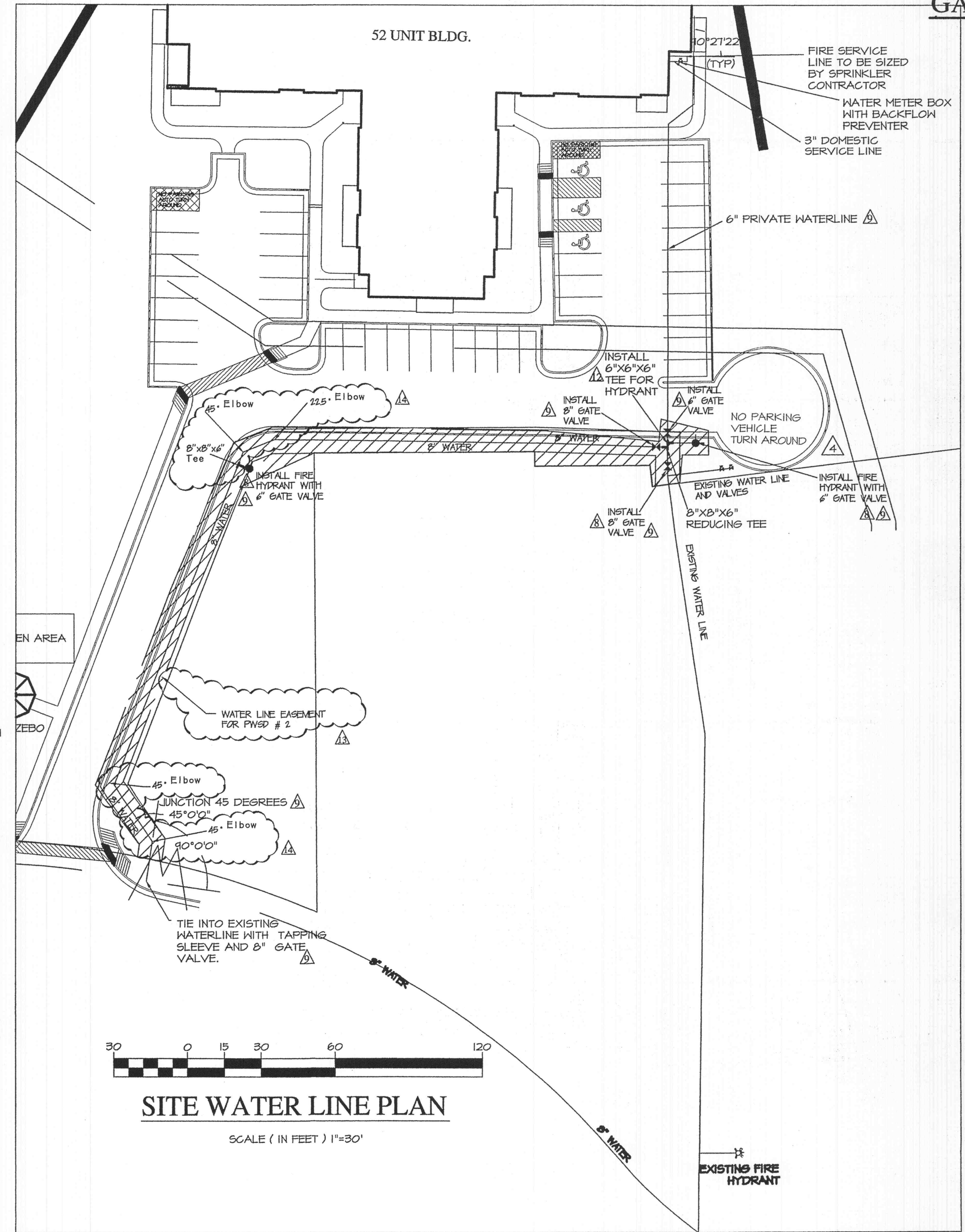


ALL UTILITY CONSTRUCTION WILL BE IN ACCORDANCE WITH THE CURRENT ST. CHARLES COUNTY PWS#2 GUIDELINES AND SPECIFICATIONS AS APPROVED BY MDNR REVIEW NO. 61996-04R

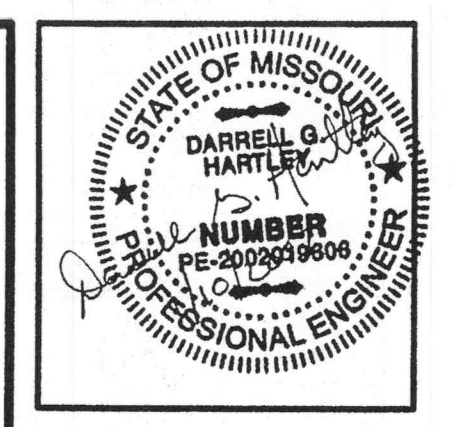
ALL WATER SUPPLY LINES 4" AND GREATER SHALL HAVE THRUST BLOCKS AT ALL TEES, CROSSES, CAPS, 90°, 45° AND 11.25° BENDS.



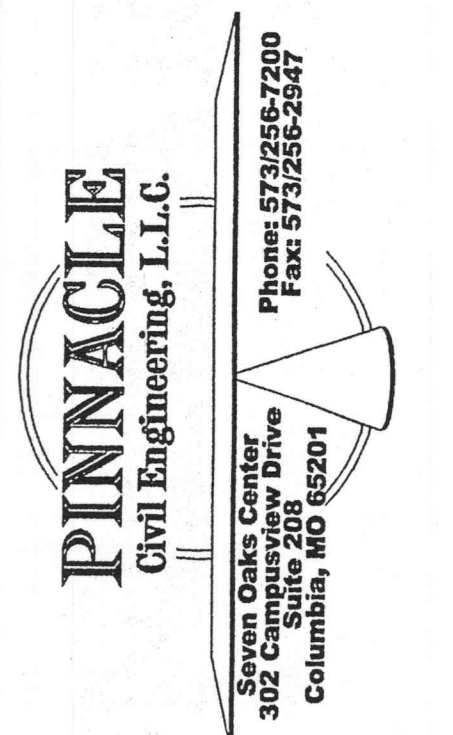
**WATERLINE TRENCH AND BEDDING**  
NOT TO SCALE



**SITE WATER LINE PLAN**  
SCALE (IN FEET) 1"=30'



**MILL POND APARTMENTS**  
**MISSOURI**  
**O'FALLON,**



COPYRIGHT © 2006
1ST ISSUE 09 NOVEMBER 2005
REVISIONS
▲ 23 JANUARY 2006
▲ 09 FEBRUARY 2006
▲ 02 JUNE 2006
▲ 07 SEPT 2006 THHinc

SHEET NO.	ASI #4
<b>C6.3</b>	
JOB NO.	2324
SHEET	15 OF 63

- ▲ 21 NOV 2006 THHinc
- ▲ 30 NOV 2006 THHinc
- ▲ 14 DEC 2006 THHinc
- ▲ 2 JAN 2007 THHinc
- ▲ 18 SEPT 2006 THHinc
- ▲ 10 OCT 2006 THHinc
- ▲ 20 OCT 2006 THHinc
- ▲ 07 NOV 2006 THHinc