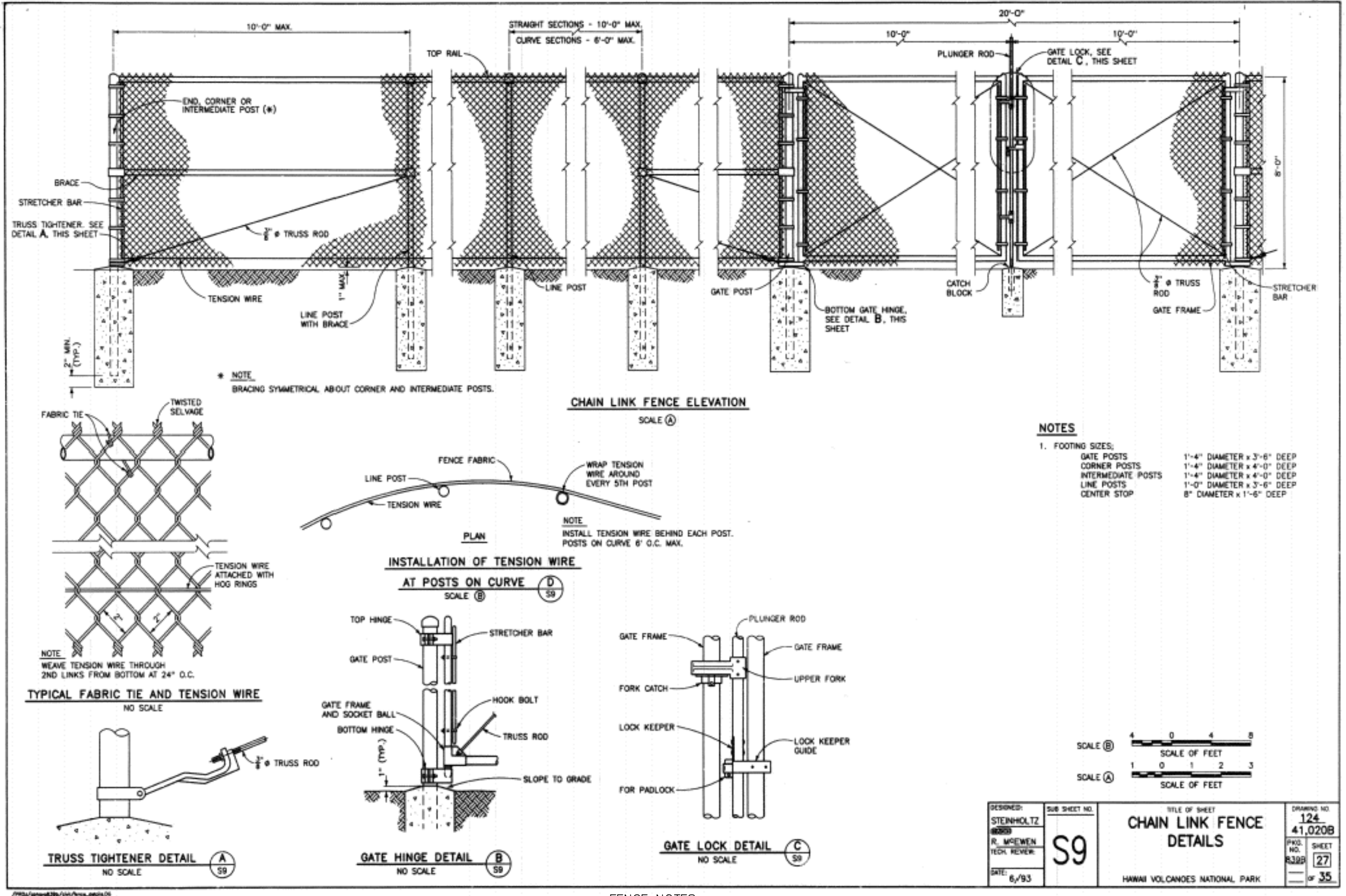


PROJECT DATA			
BUILDINGS	PAVED AREAS	LANDSCAPED AREAS	TOTAL SQ. FT.
27,106 (4%)	232,514 (35%)	396,616 (60%)	656,236

SYMBOL	QUANTITY	COMMON NAME	BOTANICAL NAME	HEIGHT
(Symbol)	10	PIN OAK	QUERCUS PALUSTRIS	<45'
(Symbol)	16	PLUM PURPLE-LEAF	PRUNUS CERASIFERA	15'
(Symbol)	6	RED MAPLE	ACER RUBRUM	45'
(Symbol)	16	MUGO PINE	PINUS MUGO MUGHUS	7'

\*\*CONIFER TREES MUST BE A MINIMUM OF 6" IN HEIGHT.  
 \*\*DECIDUOUS TREES MUST BE A MINIMUM OF 2" IN CALIPER

FINAL TREE SELECTIONS AND LOCATIONS TO BE SHOWN ON CONSTRUCTION PLANS



L3.1-01 TREE STAKING/PLANTING DETAIL N.T.S.

L3.1-02 SHRUB PLANTING DETAIL N.T.S.

LANDSCAPE NOTES

- FINAL TREE SELECTION AND LOCATIONS SHALL BE SHOWN ON THE CONSTRUCTION PLANS.
- ALL TREES SHALL BE PLANTED PER SECTION 402.130 - TREE PLANTING STANDARDS - OF THE CITY OF FALLON MUNICIPAL CODE.
- DECIDUOUS TREES SHALL BE A MINIMUM OF 2" CALIPER AT TIME OF PLANTING.
- CONIFEROUS TREES SHALL BE A MINIMUM OF 6" IN HEIGHT AT TIME OF PLANTING.

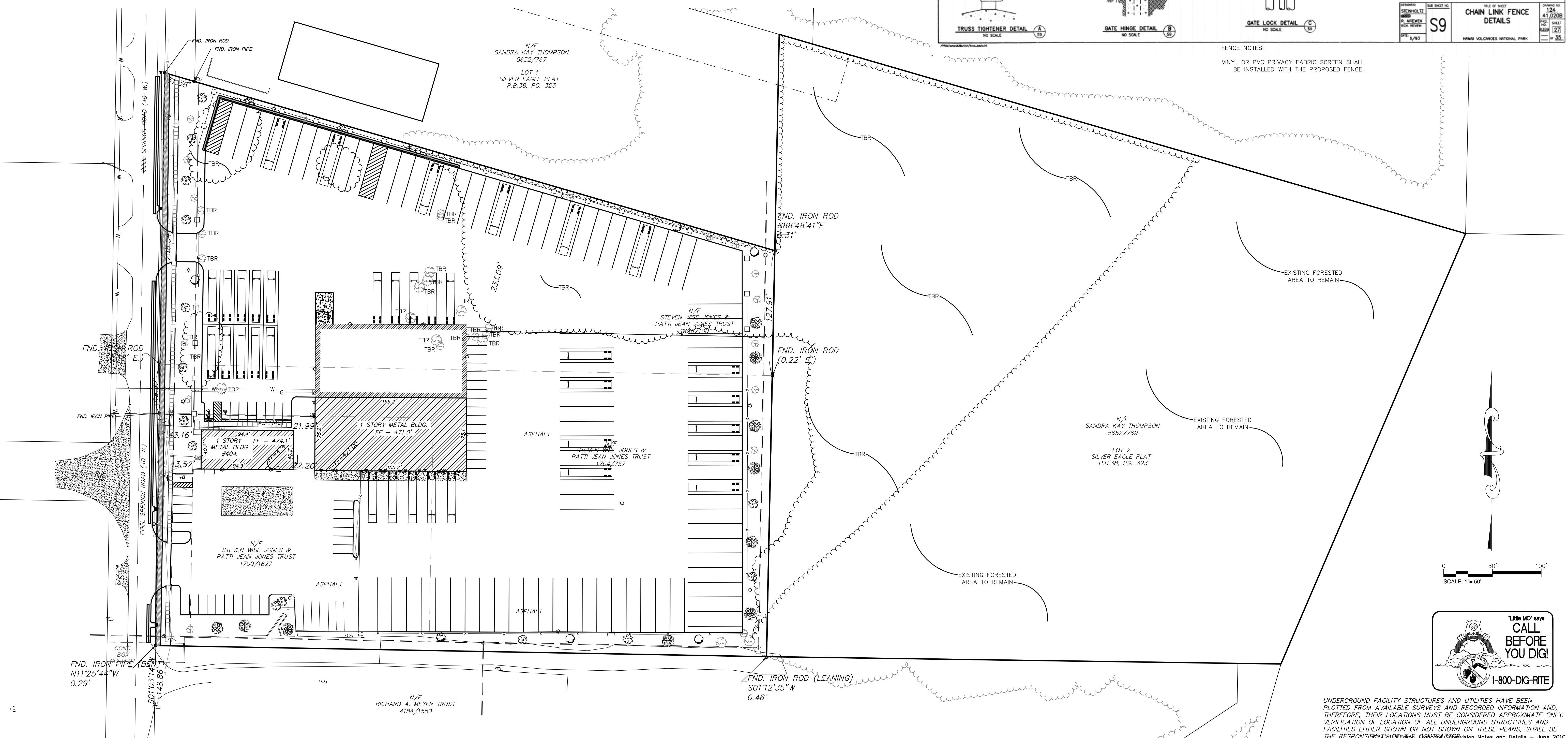
TREE PRESERVATION

EXISTING TREE MASS = 384,861 SQ FT  
 TREE MASS REMAINING = 209,029 SQ FT  
 PERCENT OF TREE MASS PRESERVED = 54.3%

LANDSCAPE CALCULATIONS

STREET TREES: 1 TREE PER EVERY 40.00' OF PUBLIC/Private STREET FRONTAGE.  
 TREES REQUIRED: 586' \* 1 TREE/EVERY 40.00' = 15 REQUIRED  
 SITE TREES: 1 PER 4,000 S.F. OPEN SPACE 396,616 S.F. OPEN SPACE/4,000 = 99 TREES  
 TREES PROVIDED: 15 STREET TREES + 20 SITE TREES = 48 TREES plus existing forested area to remain

PARKING LOT LANDSCAPING:  
 NUMBER OF PROPOSED PARKING STALLS = 47  
 LANDSCAPING AREA REQUIRED = 47 \* 270 \* 6% = 762 SQ FT  
 LANDSCAPING PROVIDED = 3,370 SQ FT



PROJECT TITLE  
**IMPROVEMENT PLANS**  
 MIDWAY TRAILERS INC DBA  
 MISSOURI GREAT DANE  
 LANDSCAPING PLANS  
 PFS No. 90056MOCGD.00F  
 TASK 001

St. Peters  
 22 Richmond Center Court  
 St. Peters, MO 65276  
 Phone (636) 397-1211  
 Fax (636) 397-1104  
 www.prs8.com

**Pickett Ray & Silver**  
 Civil Engineering & Land Surveying  
 Beyond Standard

**ENGINEERS AUTHENTICATION**  
 THE RESPONSIBILITY FOR PROFESSIONAL ENGINEERING LIABILITY ON THIS PROJECT IS LIMITED TO THE SET OF PLANS AUTHORIZED BY THE SEAL, SIGNATURE, AND DATE HEREON ATTACHED. RESPONSIBILITY IS ASSUMED FOR ALL OTHER ENGINEERING PLANS INVOLVED IN THIS PROJECT AND SPECIFICALLY EXCLUDES RESPONSIBILITY AFTER THIS DATE UNLESS REAUTHENTICATED.

**PROCKETT, RAY & SILVER, INC. MO LICENSE #00000**

KARL A. SCHENKE, P.E.  
 PROFESSIONAL ENGINEER LICENSE 2003015039

Developer / Owner Information  
**STEVE + PATTI JONES**  
 PO BOX 275  
 Benton, Missouri 63796

P-Z No. 17-012024  
 City No. 18-006464  
 LANDSCAPING PLANS  
 Page No. 12 of 20

\*\*\* 12/12/2018, Review Set, NOT APPROVED FOR CONSTRUCTION \*\*\*