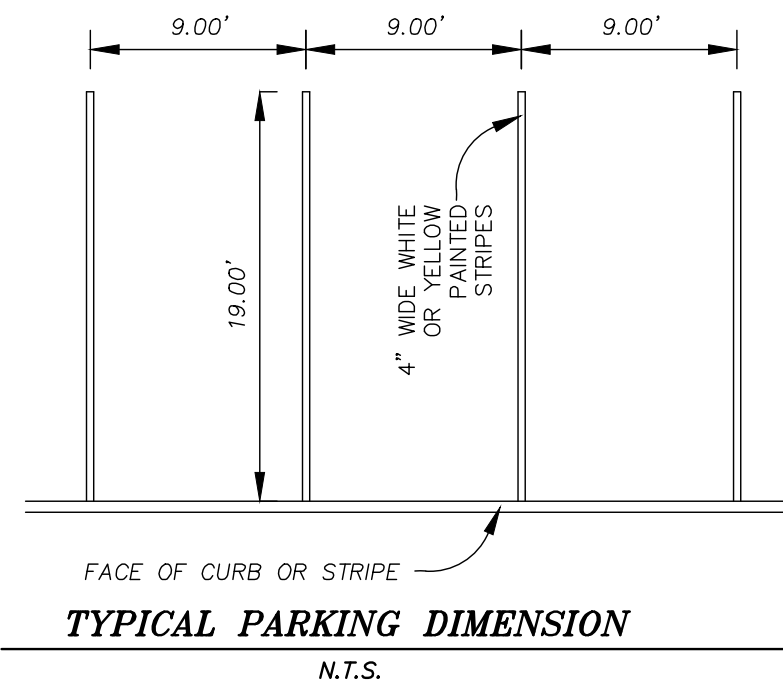
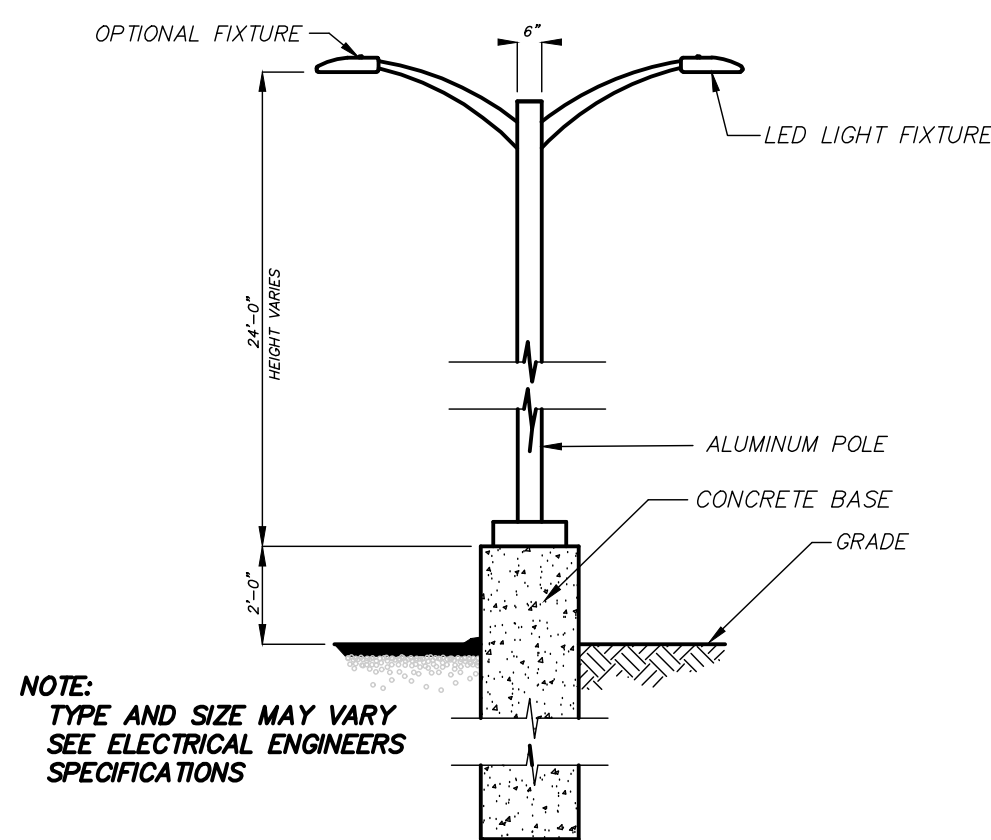


ADA PARKING DIMENSION
N.T.S.



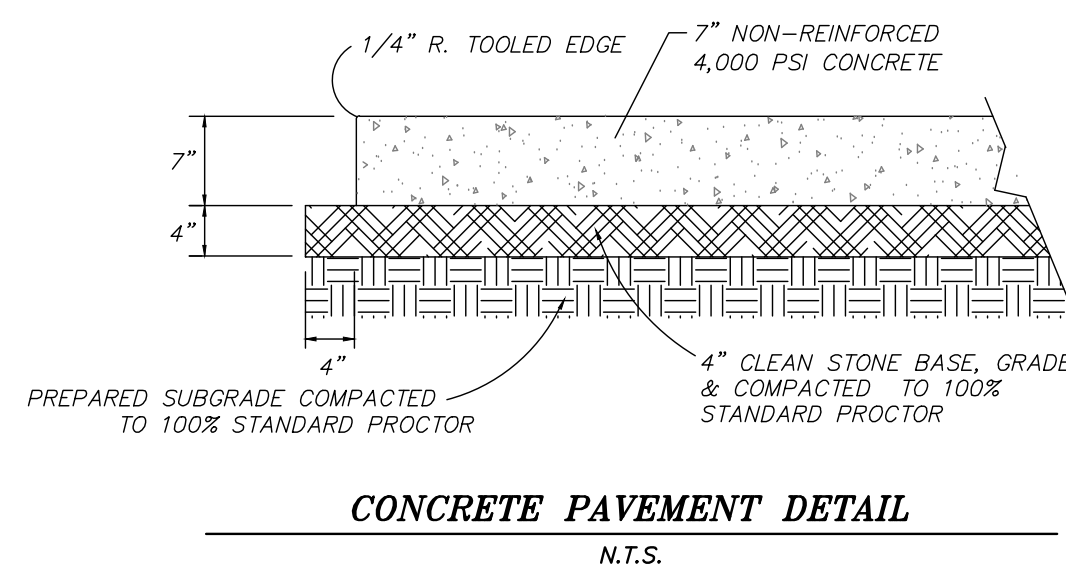
TYPICAL PARKING DIMENSION
N.T.S.



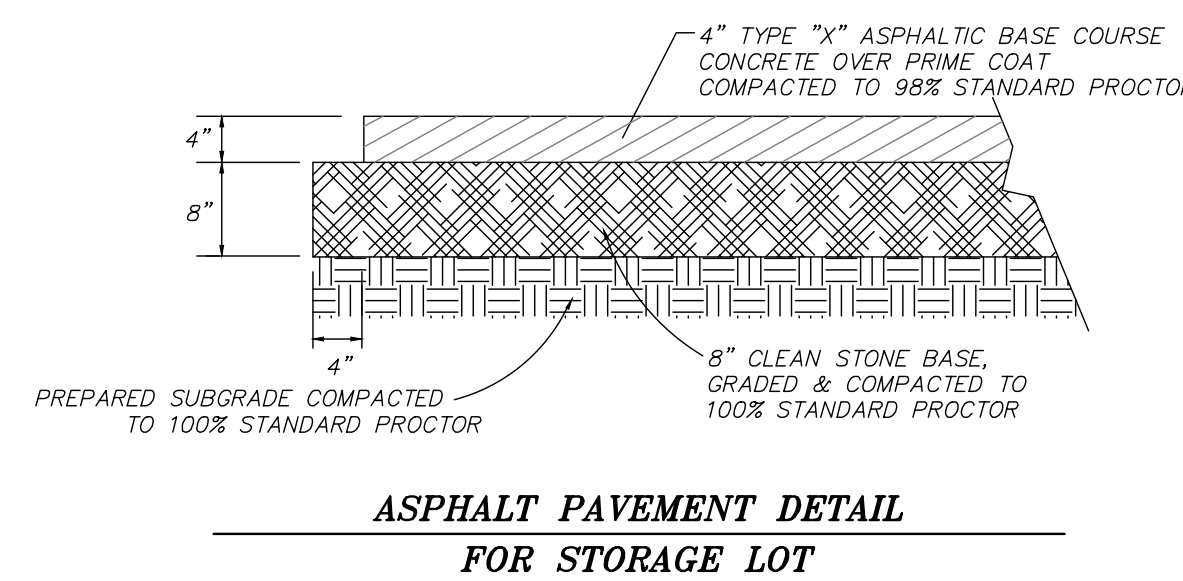
NOTE:
TYPE AND SIZE MAY VARY
SEE ELECTRICAL ENGINEERS
SPECIFICATIONS

COORDINATE EXACT POLE BASE REQUIREMENTS
WITH LIGHTING MANUFACTURER'S REPRESENTATIVE
PRIOR TO INSTALLATION.

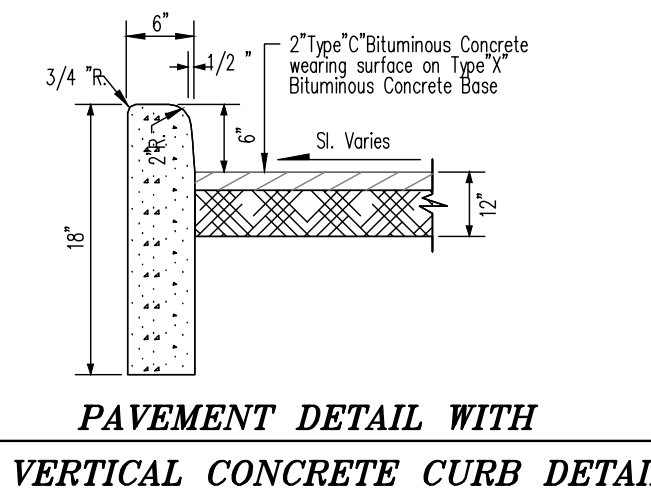
LIGHT POLE DETAIL
N.T.S.



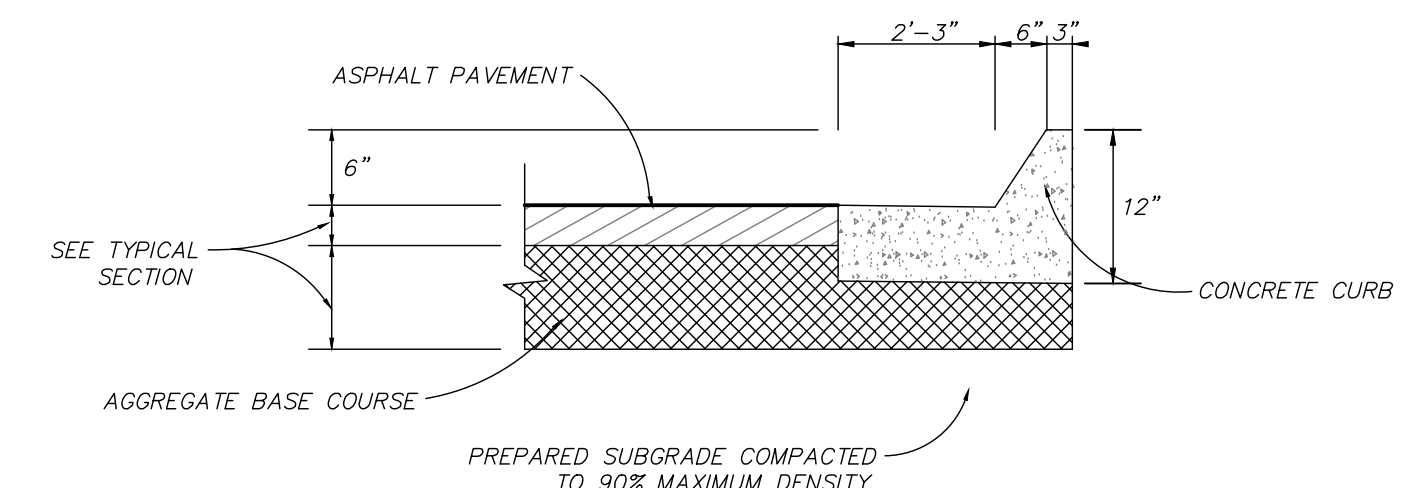
CONCRETE PAVEMENT DETAIL
N.T.S.



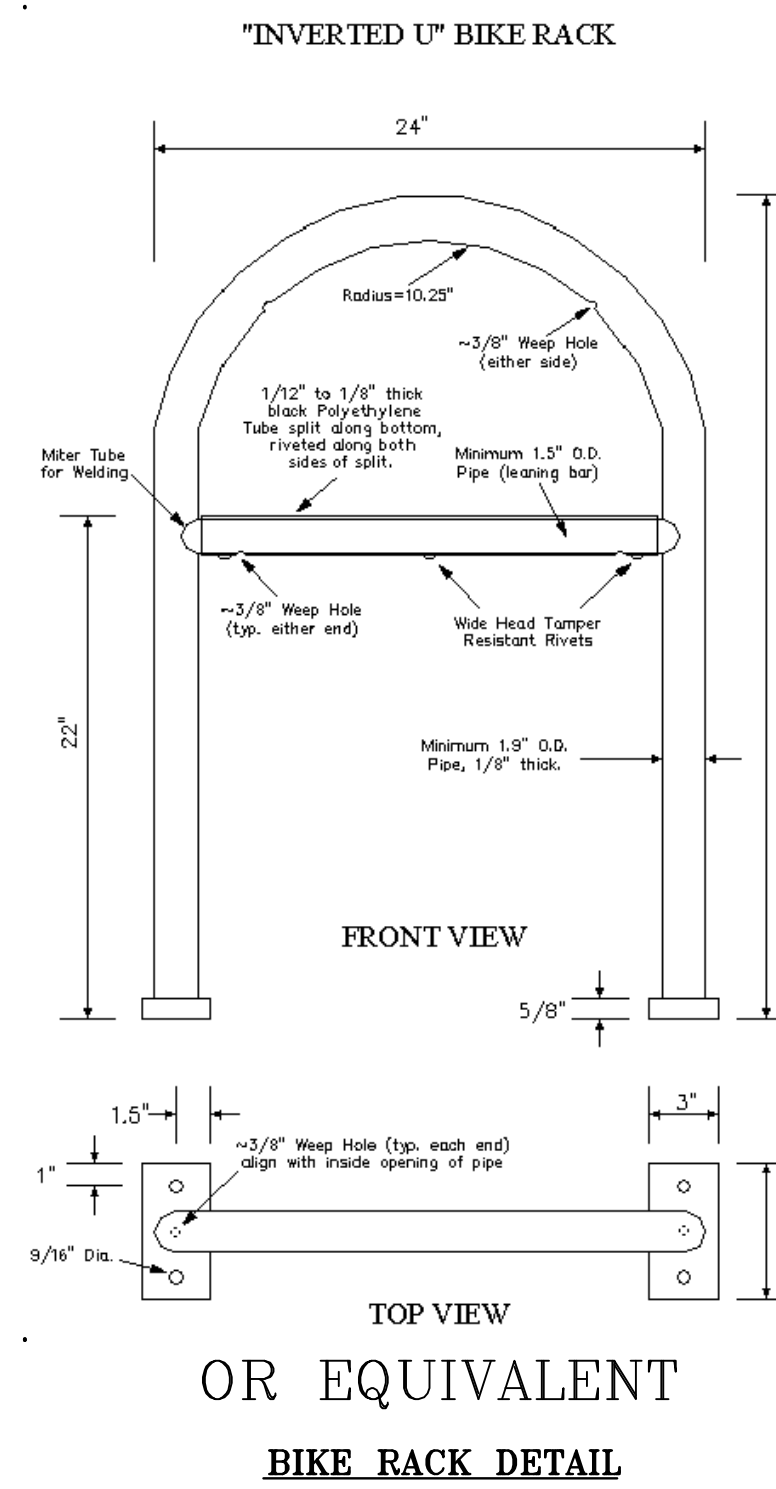
**ASPHALT PAVEMENT DETAIL
FOR STORAGE LOT**
N.T.S.



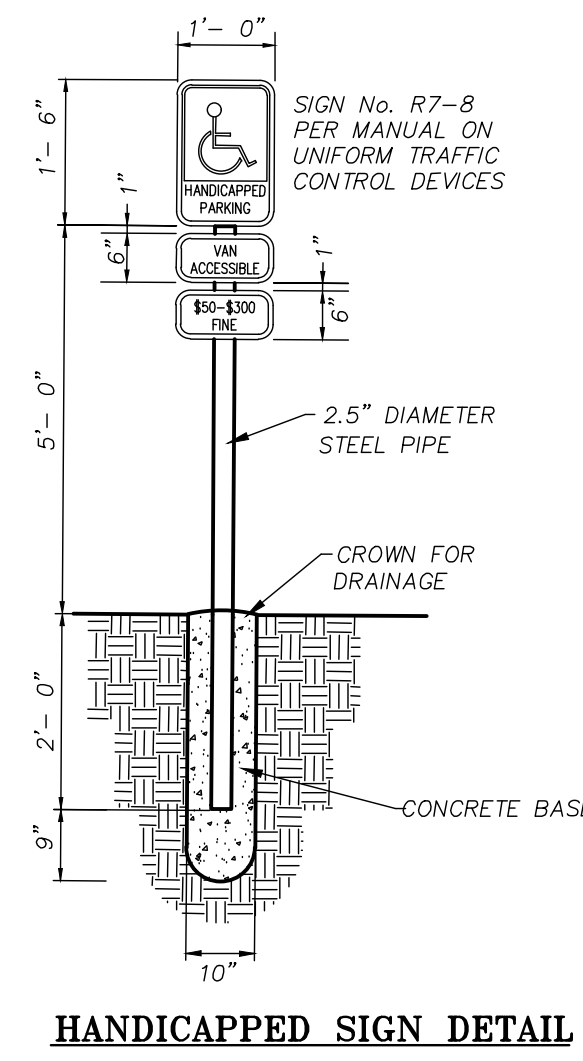
**PAVEMENT DETAIL WITH
6\"/>**



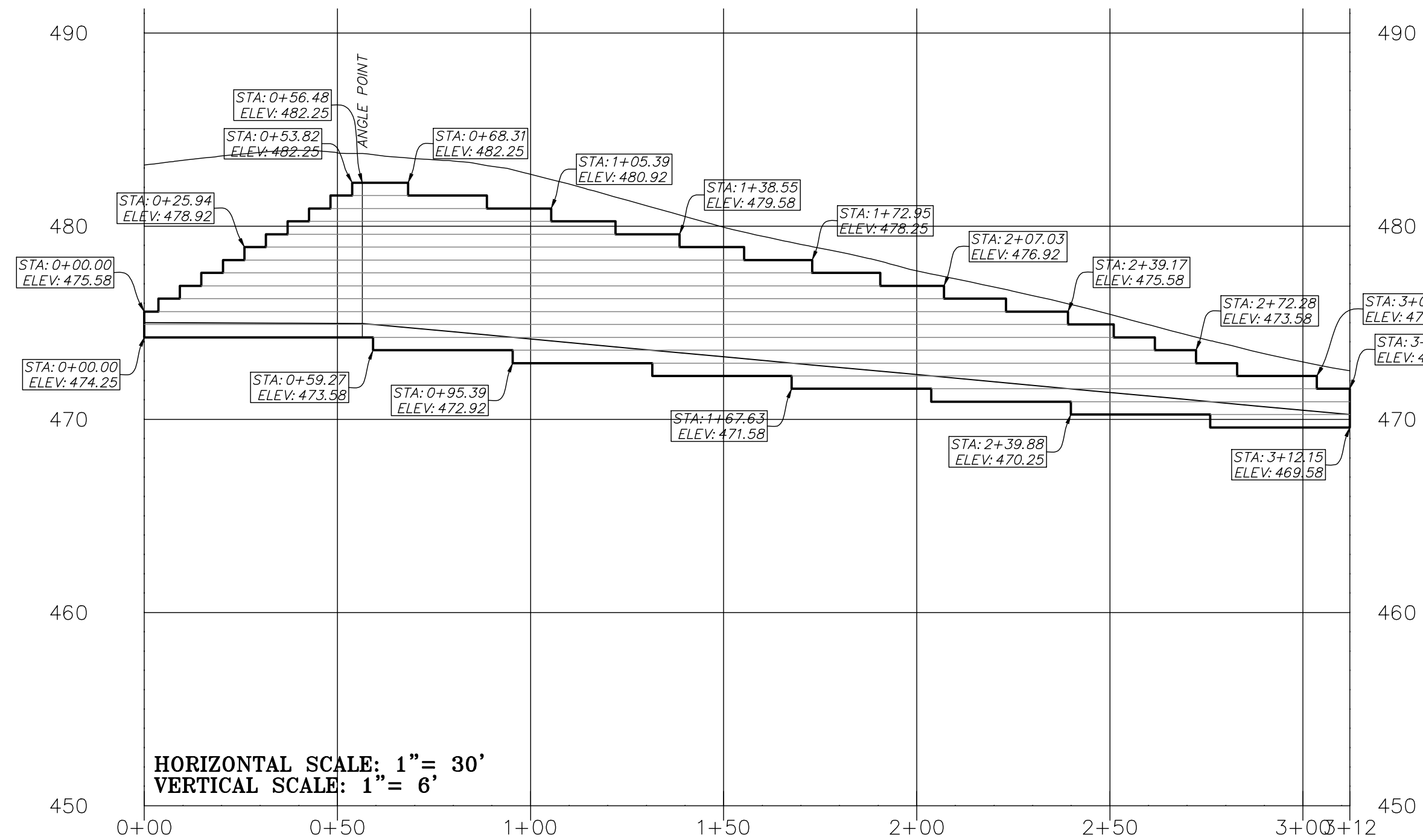
6\"/>



**BIKE RACK DETAIL
OR EQUIVALENT**

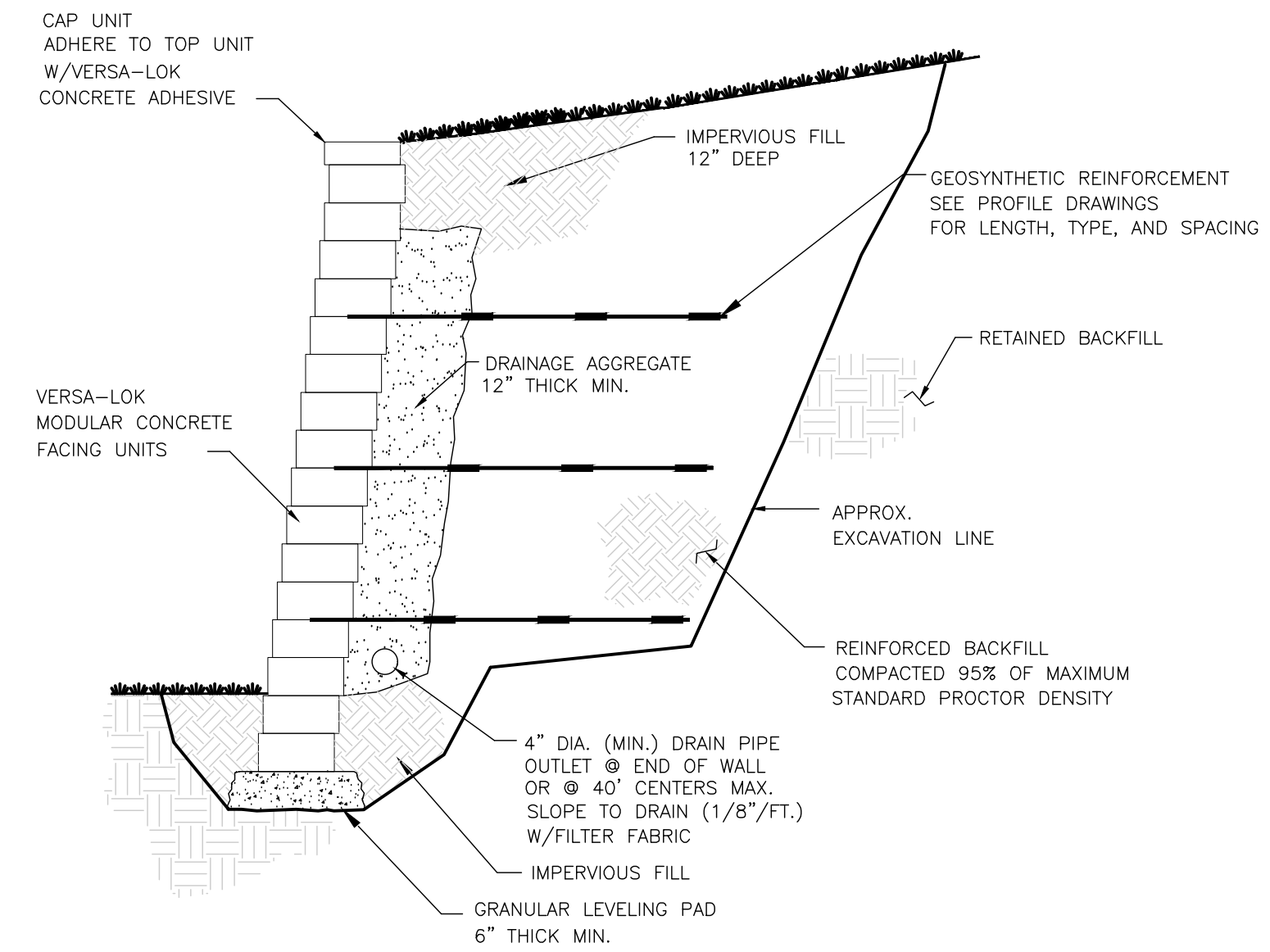


HANDICAPPED SIGN DETAIL



HORIZONTAL SCALE: 1" = 30'
VERTICAL SCALE: 1" = 6'

Versa-Lok Retaining Wall Details

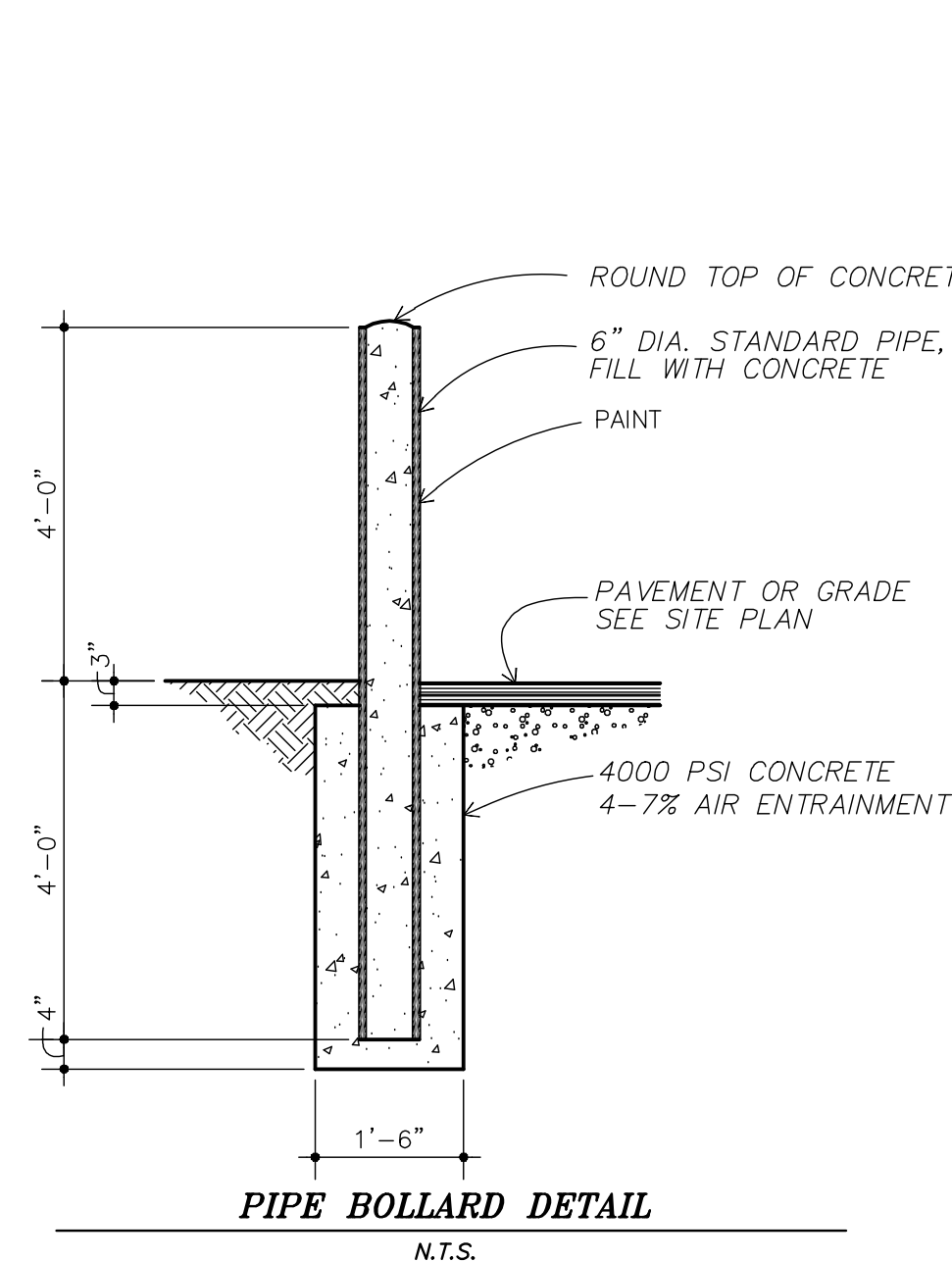


TYPICAL SECTION-REINFORCED RETAINING WALL

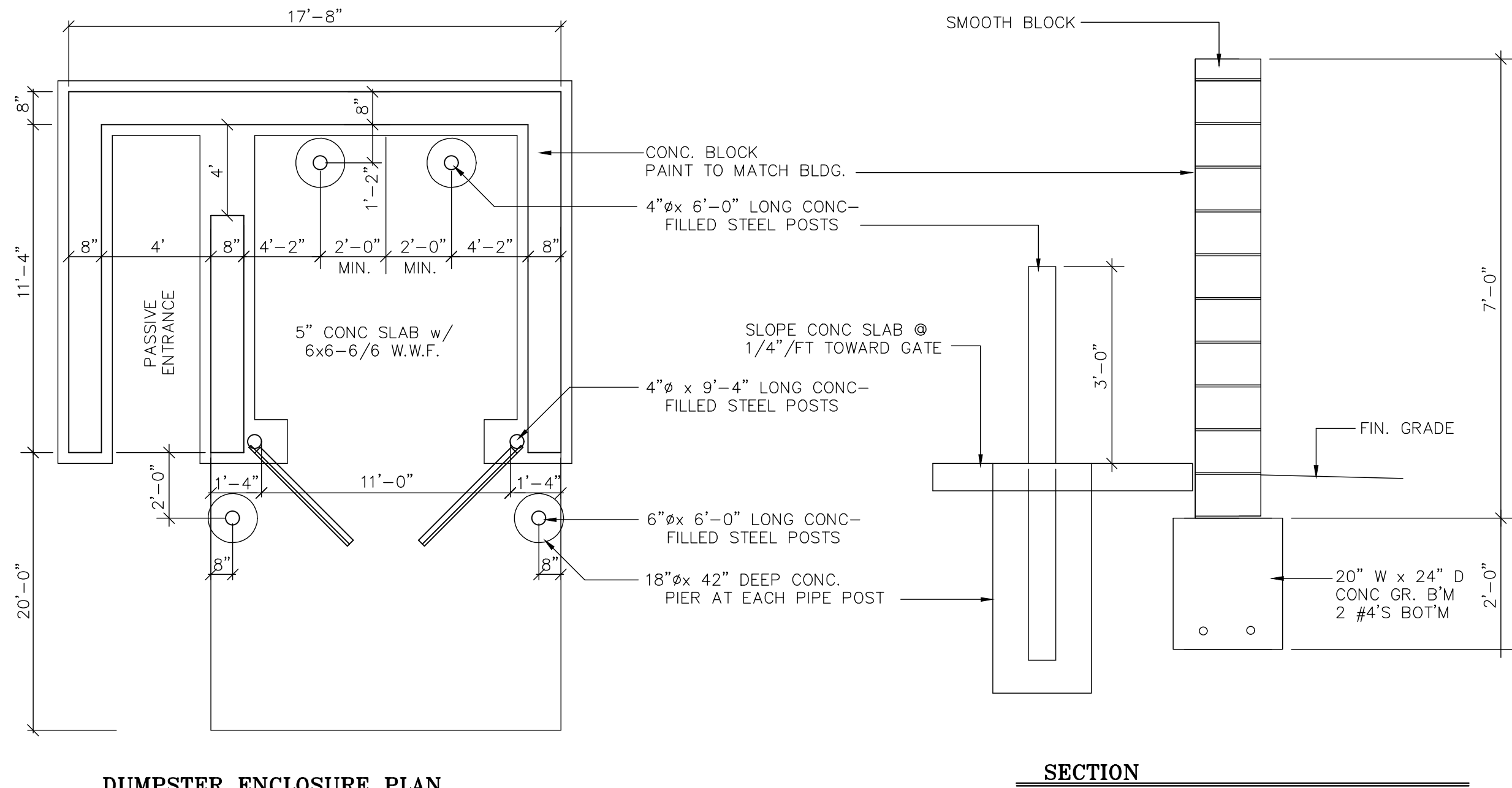
MODULAR CONCRETE UNIT
NOT TO SCALE

THESE CONSTRUCTION DETAILS ARE INTENDED TO BE USED AS AN AID
IN DESIGNING THE RETAINING WALLS WITH VERSA-LOK STANDARD UNITS.
FINAL DETERMINATION OF THE SUITABILITY OF ANY INFORMATION OR MATERIAL
FOR THE USE CONTEMPLATED, AND ITS MANNER OF USE, IS THE SOLE
RESPONSIBILITY OF THE USER.

FOR REVIEW PURPOSES ONLY. REFER TO ARCHITECTURAL PLANS
FOR ACTUAL DETAIL OF TRASH ENCLOSURE TO BE CONSTRUCTED

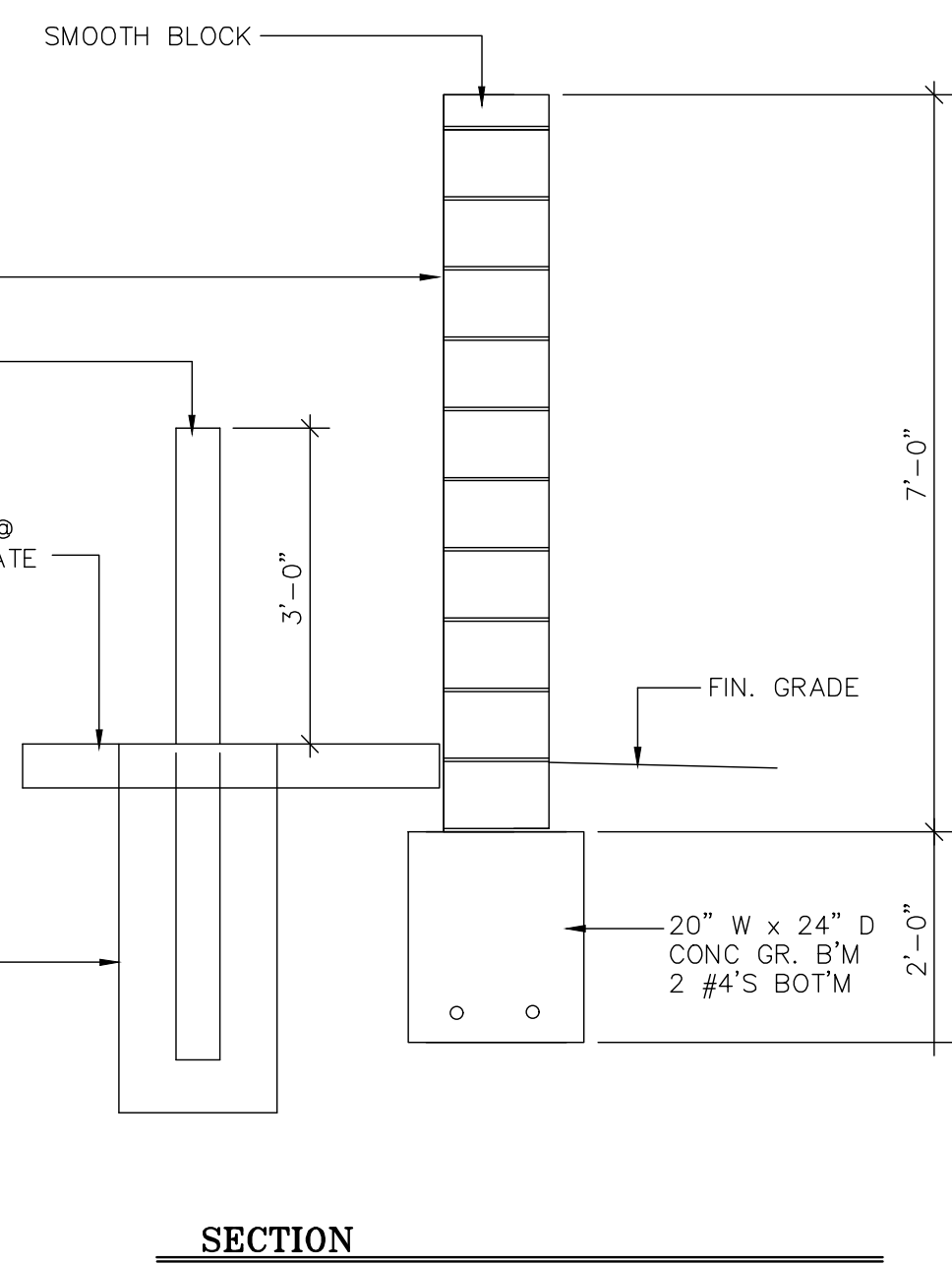


PIPE BOLLARD DETAIL
N.T.S.



DUMPSTER ENCLOSURE PLAN

N.T.S.



SECTION
N.T.S.

PROJECT TITLE
IMPROVEMENT PLANS
MIDWAY TRAILERS INC DBA
MISSOURI GREAT DANE
DETAILS
PFS No. 90056MOGD.00F
TASK 001

St. Peters
22 Richmond Center Court
St. Peters, MO 65276
Phone (636) 397-1211
Fax (636) 397-1104
www.prs8.com

Pickett Ray & Silver
Civil Engineering
& Land Surveying
Beyond Standard

ENGINEER'S AUTHENTICATION
THE RESPONSIBILITY FOR PROFESSIONAL ENGINEERING
LIABILITY ON THIS PROJECT IS LIMITED TO THE
SET OF PLANS AUTHENTICATED BY THE SEAL, SIGNATURE,
AND DATE HEREON ATTACHED. RESPONSIBILITY IS
DISCLAIMED FOR ALL OTHER ENGINEERING PLANS
INVOLVED IN THIS PROJECT AND SPECIFICALLY EXCLUDES
RESPONSIBILITY AFTER THIS DATE UNLESS REAUTHENTICATED.
PICKETT, RAY & SILVER, INC. IS
LICENSE #000000



KARL A. SCHENKE, P.E.
PROFESSIONAL ENGINEER LICENSE 2003015039

Developer / Owner Information
STEVE + PATTI JONES
PO BOX 275
Benton, Missouri 63796

P+Z No. 17-012024
City No. 18-006464
DETAILS

Page No. 15 of 20

*** 12/12/2018, Review Set, NOT APPROVED FOR CONSTRUCTION ***