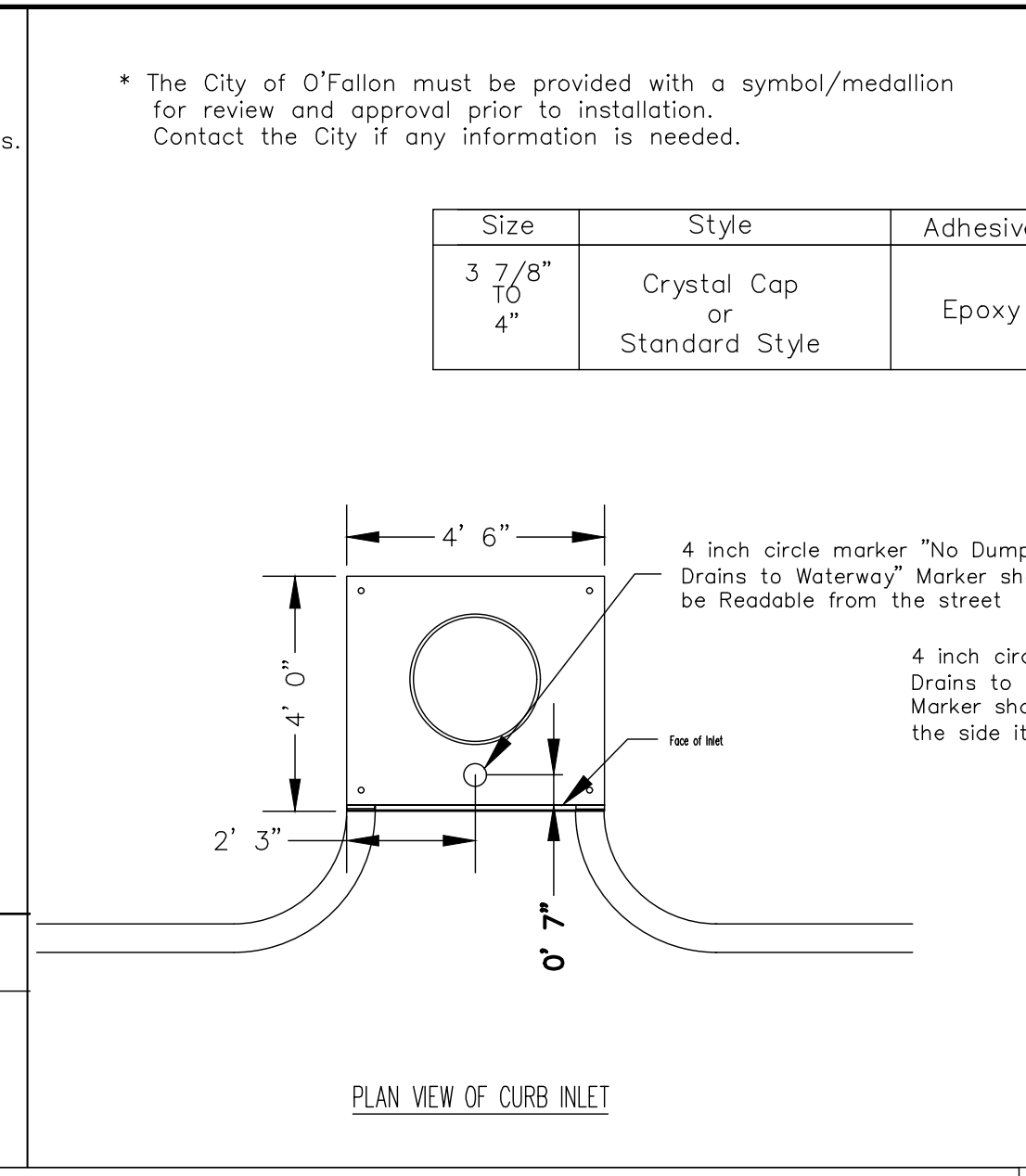


* The discharge point of all flared end sections shall be protected by rip rap or other approved means.

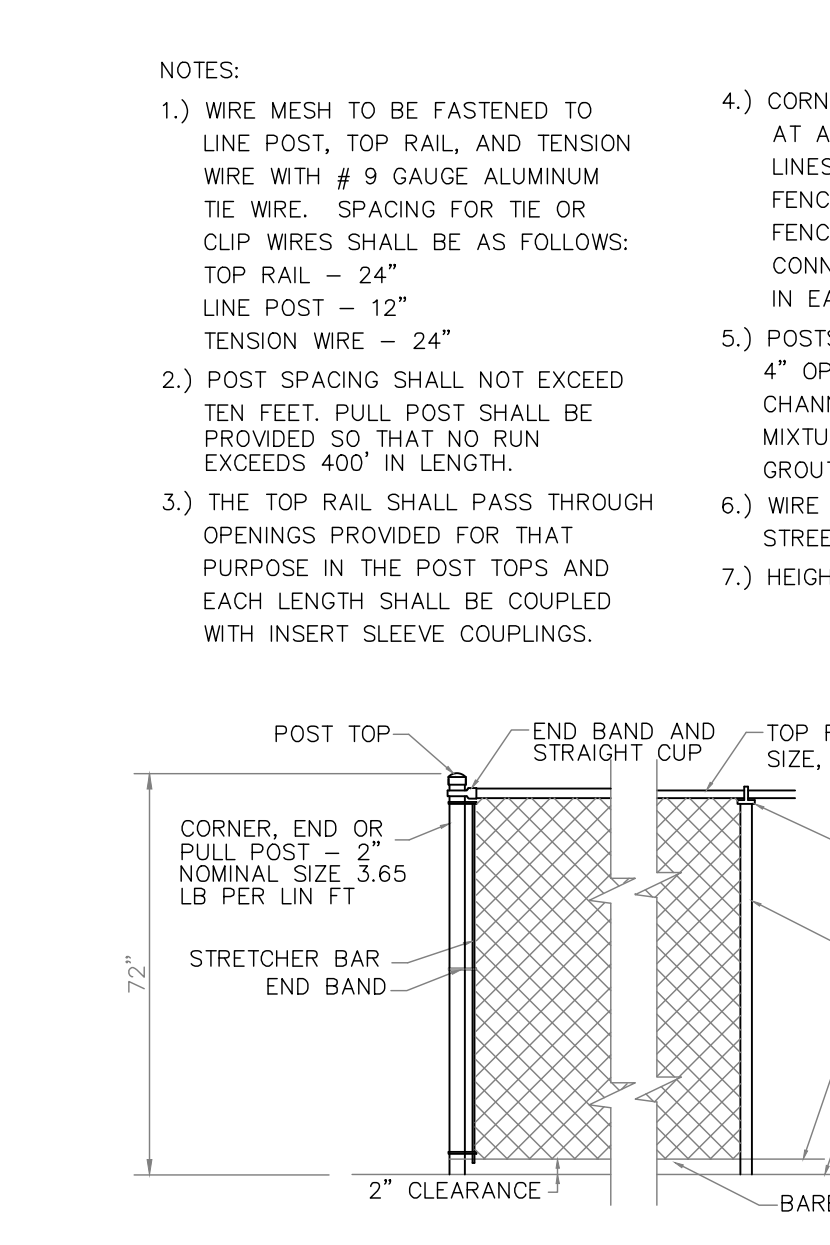
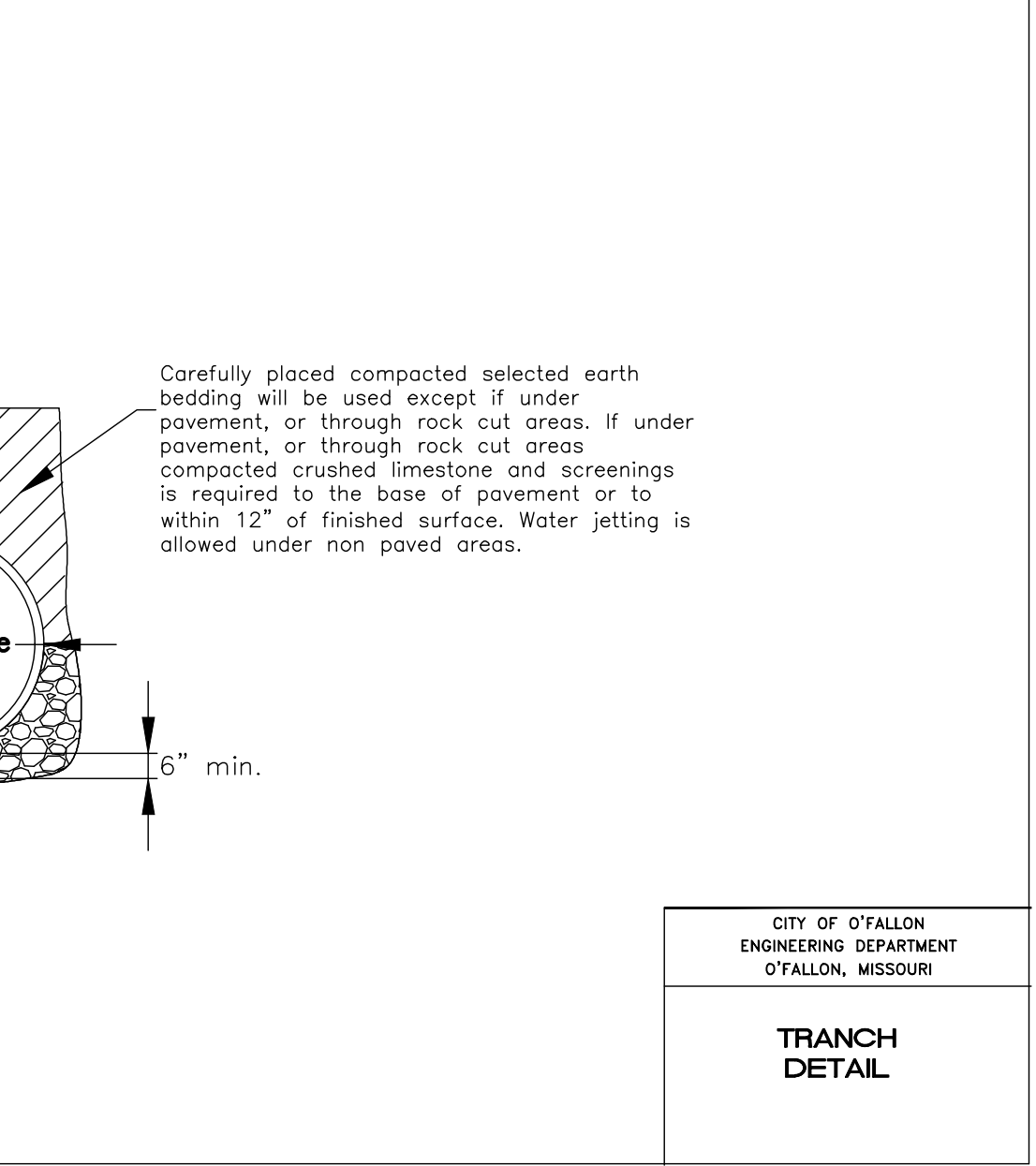
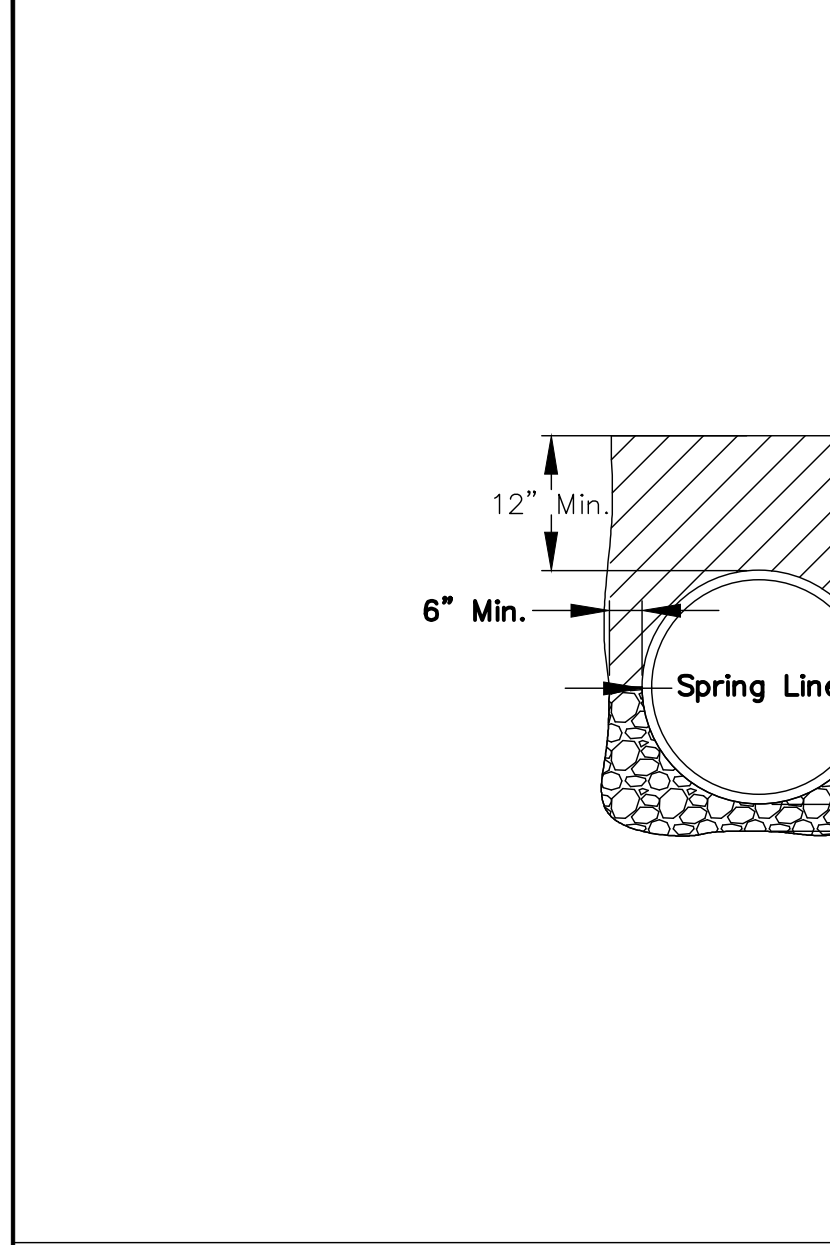
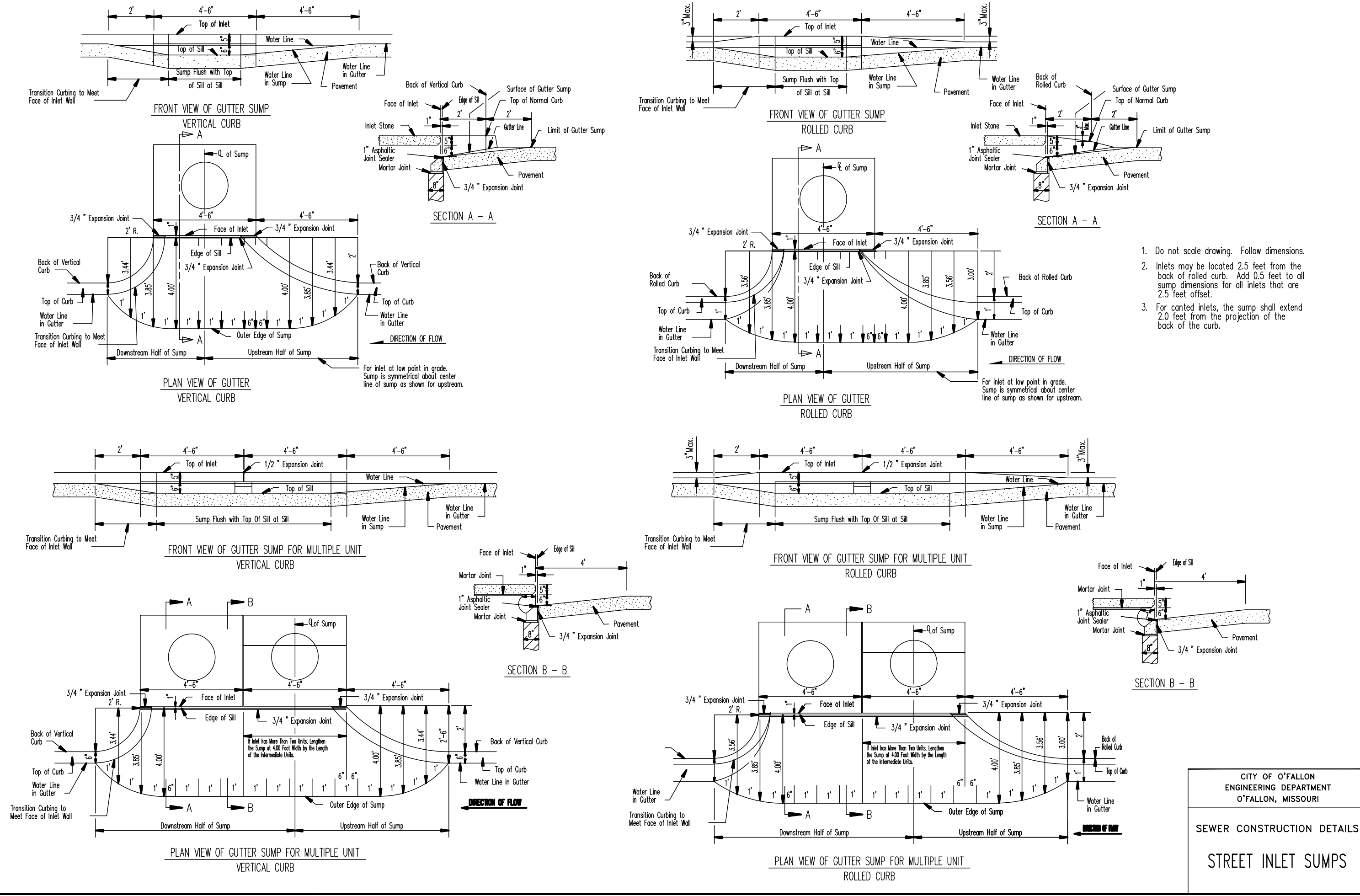
** Rip rap shown at flared end sections will be evaluated in the field by the Engineer, Contractor, and City Inspectors after installation for effectiveness and field modified, if necessary to reduce erosion on and off site.

Sieve	Maximum	Minimum
12 inch	90	70
6 inch	30	10
1/2 inch	5	0

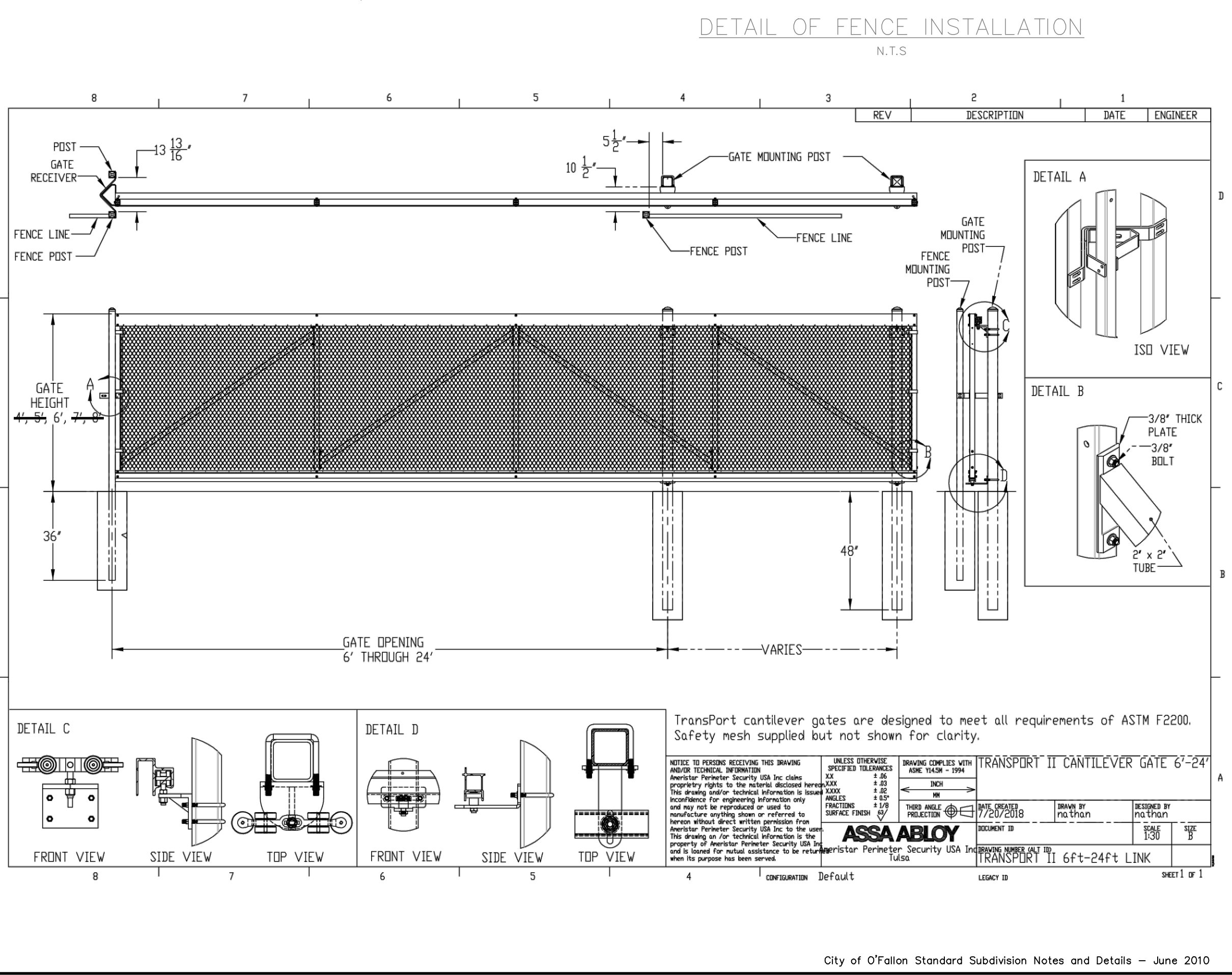


Size	Style	Adhesive	Message (Part #)
3 7/8" to 4"	Crystal Cap or Standard Style	Epoxy	No Dumping Drains to Waterway

STORM DRAIN MARKER LOCATION



* All other Storm or Sanitary Sewer Details will be by M.S.D. 2007 Standards and Specifications.



PROJECT TITLE
IMPROVEMENT PLANS
MIDWAY TRAILERS INC DBA
MISSOURI GREAT DANE
DETAILS

St. Peters
22 Richmond Center Court
St. Peters, MO 65276
Phone (636) 397-1211
Fax (636) 397-1104
www.prs8.com

Pickett Ray & Silver
Civil Engineering & Land Surveying
Beyond Standard

ENGINEER'S AUTHENTICATION
KARL A. SCHENKE, P.E.
PROFESSIONAL ENGINEER LICENSE 2003015039

Developer / Owner Information
STEVE + PATTI JONES
PO BOX 275
Benton, Missouri 63796

P-Z No. 17-012024
City No. 18-006464
Page No. 16 of 20

City of O'Fallon Standard Subdivision Notes and Details - June 2010

*** 12/12/2018, Review Set, NOT APPROVED FOR CONSTRUCTION ***