

LEGEND

LD. = NOMINAL PIPE SIZE
 O.D. = OUTSIDE DIAMETER OF PIPE
 H = COVER ABOVE TOP OF PIPE
 A = EMBEDDED BELOW PIPE (SEE TABLE)

TABLE OF EMBEDDED DEPTHS BELOW PIPE

LD.	MIN. SOIL	MIN. ROCK
27" & SMALLER	3"	6"

CLASS B
 CLASS C
 CLASS D
 FLAT BOTTOM TRENCH WITH BELL HOLES AND HAND PLACED EMBEDDED

LEGEND
 TAMPED BACK FILL
 COMPACTED BACK FILL
 GRANULAR BEDDING

GRANULAR BEDDING SHALL BE CRUSHED ROCK OR PEA GRAVEL WITH NOT LESS THAN 95% PASSING 1/2" (95% PASSING 3/4" FOR 30" AND LARGER PIPE) AND NOT LESS THAN 95% RETAINED ON A #6; TO BE PLACED IN NOT MORE THAN 6" LAYERS AND COMPACTED BY SLUING WITH A SHOVEL OR VIBRATING.

COMPACTED BACK FILL SHALL BE FINELY DIVIDED JOB EXCAVATED MATERIAL FREE FROM DEBRIS, ORGANIC MATERIAL AND STONES, PLACED IN UNIFORM LAYERS NOT MORE THAN 6" THICK, COMPACTED TO 95% MAXIMUM DENSITY AS DETERMINED BY A.S.T.M. D698, OR GRADED AGGREGATE. GRANULAR BACK FILL MATERIAL MAY BE SUBSTITUTED FOR ALL OR PART OF COMPACTED BACK FILL.

TAMPED BACK FILL SHALL BE FINELY DIVIDED JOB EXCAVATED MATERIAL FREE FROM DEBRIS, ORGANIC MATERIAL AND STONES, HAND PLACED IN UNIFORM LAYERS NOT MORE THAN 6" THICK AND TAMPED AROUND CONDUIT PIPE. GRANULAR BACK FILL MATERIAL MAY BE SUBSTITUTED FOR ALL OR PART OF TAMPED BACK FILL.

TRENCH BACK FILL SHALL BE AS REQUIRED IN THE "LAYING AND BACK FILL" SECTION OF THE DETAILED SPECIFICATIONS.

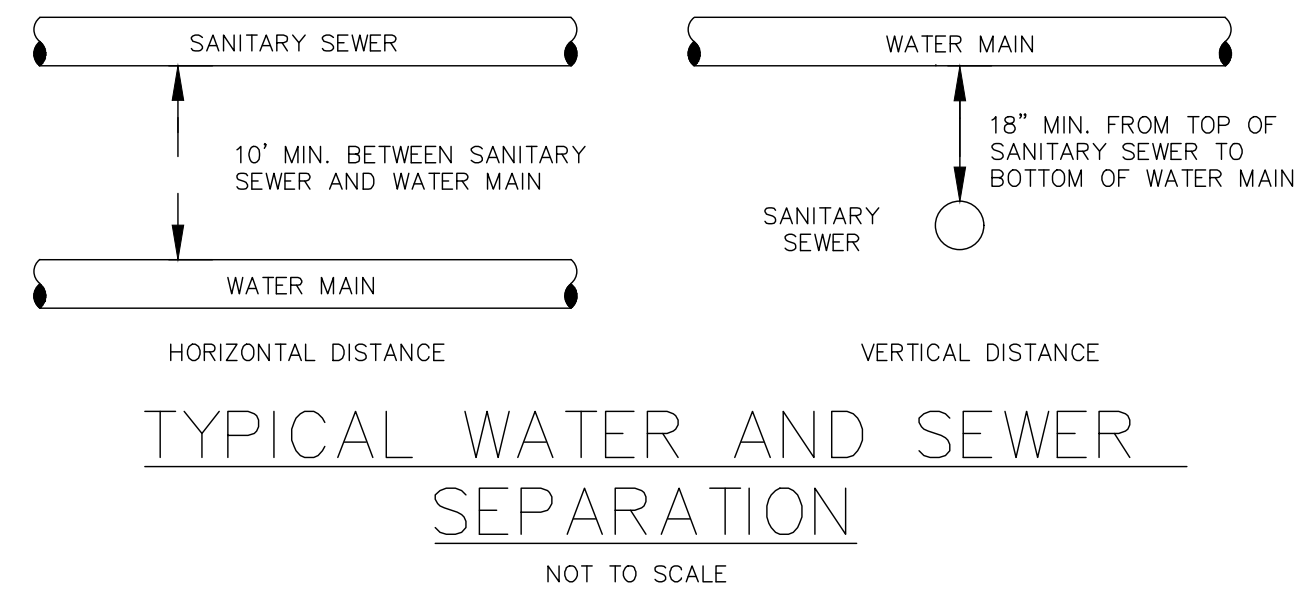
EMBEDDED THE TYPE OF EMBEDDED TO BE USED SHALL BE AS SPECIFIED IN THE PLANS AND SPECIFICATIONS.

TRACER WIRE REQUIRED ON ALL WATER MAINS

WATER MAIN EMBEDDED
 NOT TO SCALE

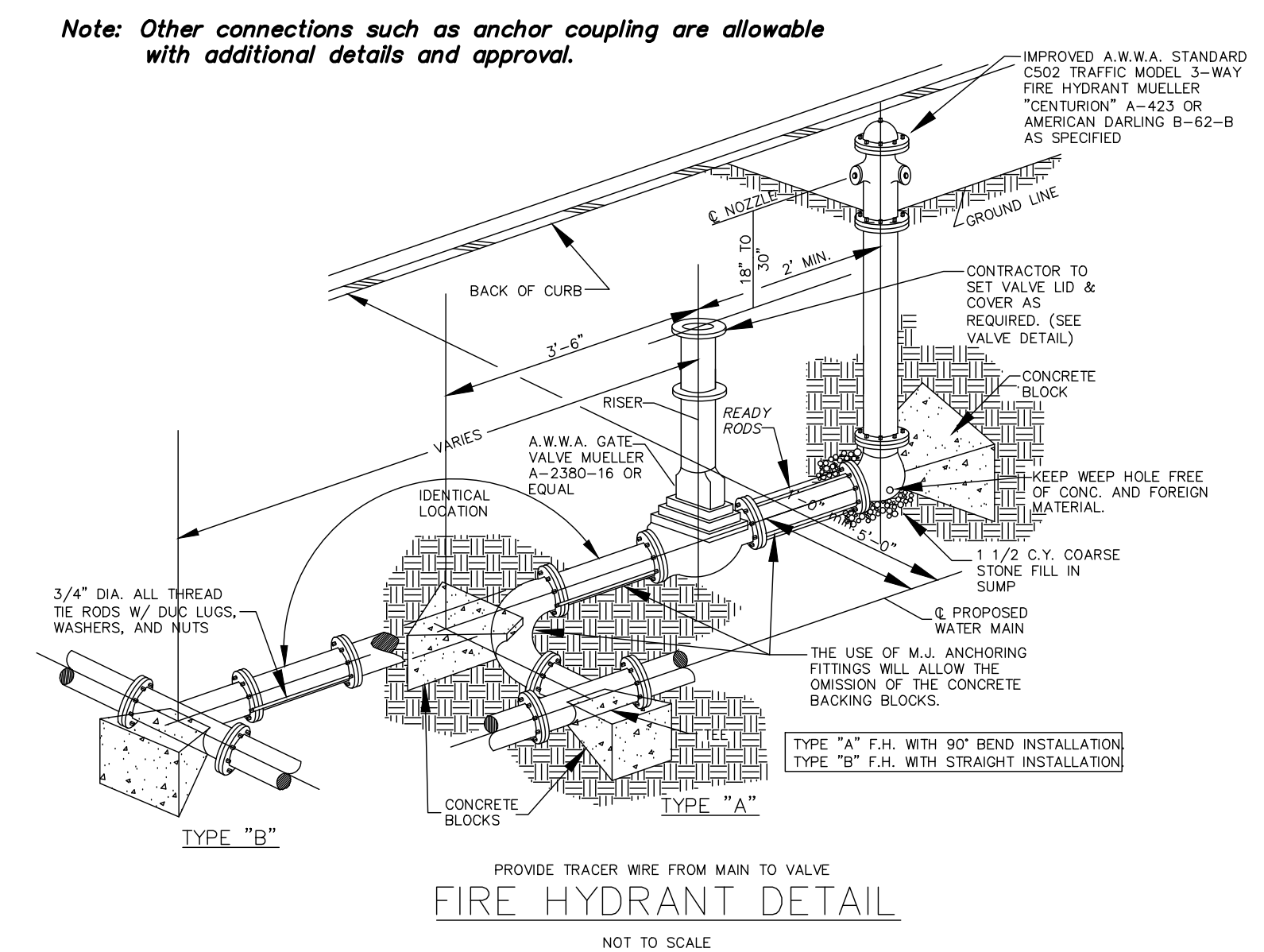
CITY OF O'FALLON
 ENGINEERING DEPARTMENT
 O'FALLON, MISSOURI

WATER MAIN EMBEDDED



CITY OF O'FALLON
 ENGINEERING DEPARTMENT
 O'FALLON, MISSOURI

WATER AND SEWER SEPARATION DETAIL



CITY OF O'FALLON
 ENGINEERING DEPARTMENT
 O'FALLON, MISSOURI

FIRE HYDRANT DETAILS

PROJECT TITLE
 IMPROVEMENT PLANS
 MIDWAY TRAILERS INC DBA
 MISSOURI GREAT DANE

DETAILS
 PFS No. 90056MOGD.00R
 TASK 001

St. Peters
 22 Richmond Center Court
 St. Peters, MO 65276
 Phone (636) 397-1211
 Fax (636) 397-1104
 www.prs.com

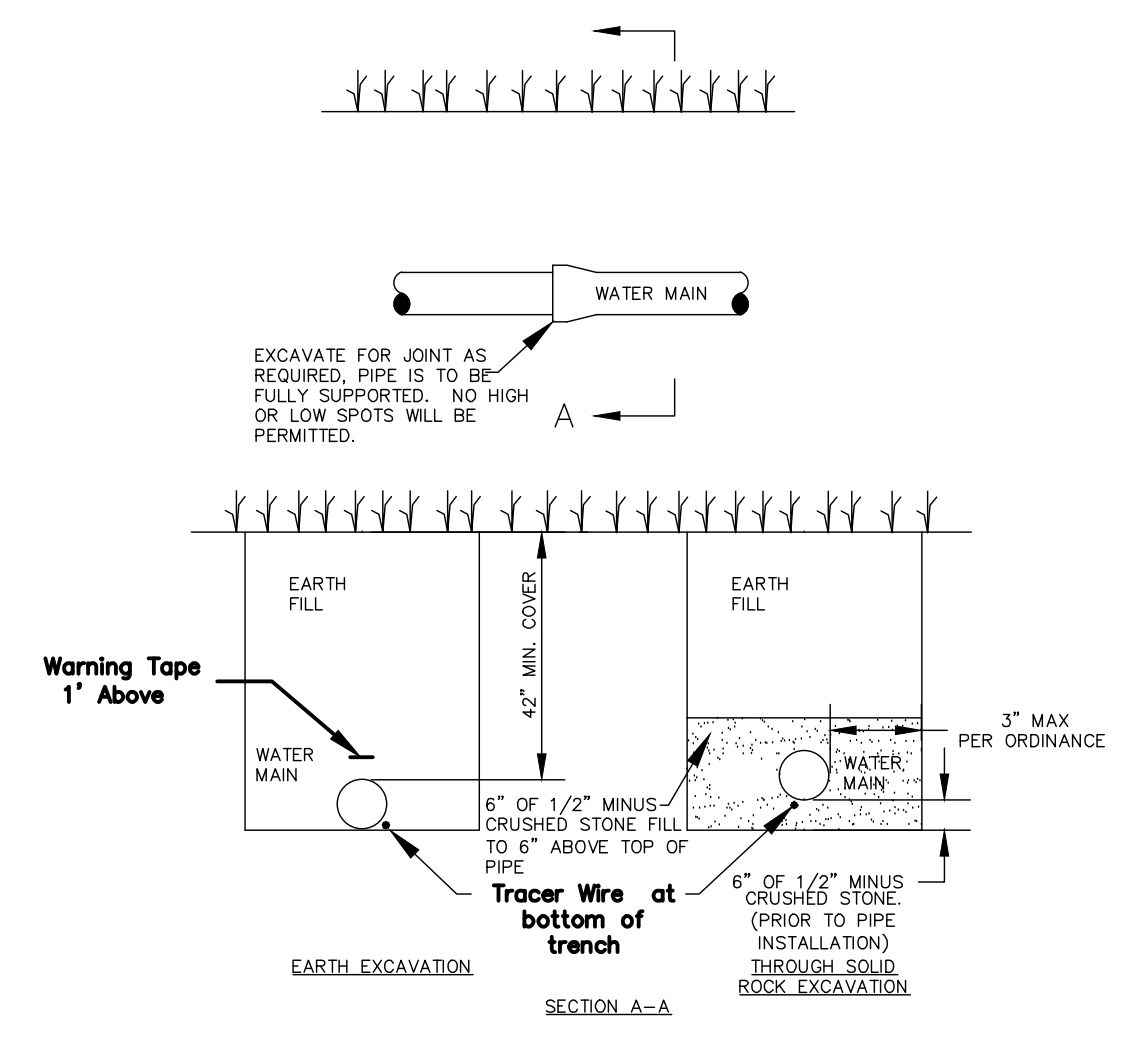
Pickett Ray & Silver
 Civil Engineering & Land Surveying
 Beyond Standard

ENGINEERS AUTHENTICATION
 THE RESPONSIBILITY FOR PROFESSIONAL ENGINEERING LIABILITY ON THIS PROJECT IS HEREBY LIMITED TO THE SET OF PLANS AUTHENTICATED BY THE SEAL, SIGNATURE, AND DATE HEREUNDER ATTACHED. RESPONSIBILITY IS DISCLAIMED FOR ALL OTHER ENGINEERING PLANS INVOLVED IN THIS PROJECT AND SPECIALLY EXCLUDED HEREUNDER AFTER THIS DATE, UNLESS REAUTHENTICATED.

PKCETT, RAY & SILVER, INC. MO LICENSE #00028



KARL A. SCHENKE, P.E.
 PROFESSIONAL ENGINEER LICENSE 2003015039



CITY OF O'FALLON
 ENGINEERING DEPARTMENT
 O'FALLON, MISSOURI

WATER MAIN INSTALLATION DETAIL

Ductile Iron Pipe installation shall follow the Ductile Iron Research Association (DIPRA) guide line.
 The Installation of PVC Pipe shall follow the Uni-Bell PVC Pipe Association Handbook of PVC Design and Construction.

Developer / Owner Information
 STEVE + PATTI JONES
 PO BOX 275
 Benton, Missouri 63796

P+Z No. 17-012024
 City No. 18-006464
 DETAILS

Page No. 18 of 20

*** 12/12/2018, Review Set, NOT APPROVED FOR CONSTRUCTION ***