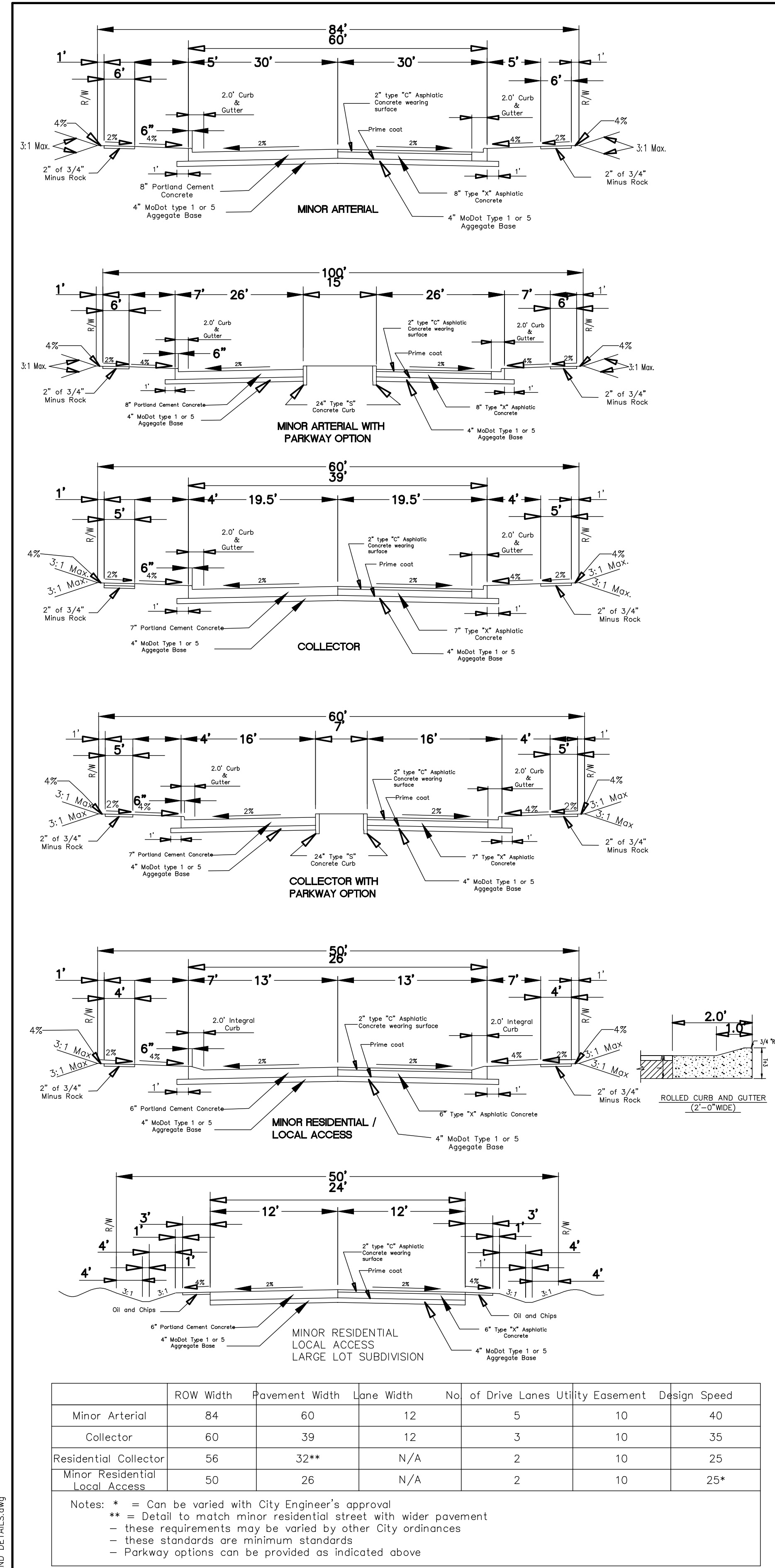


P:\90066 MCOJ\DWG\040530.dwg - COVER AND DETAILS.dwg



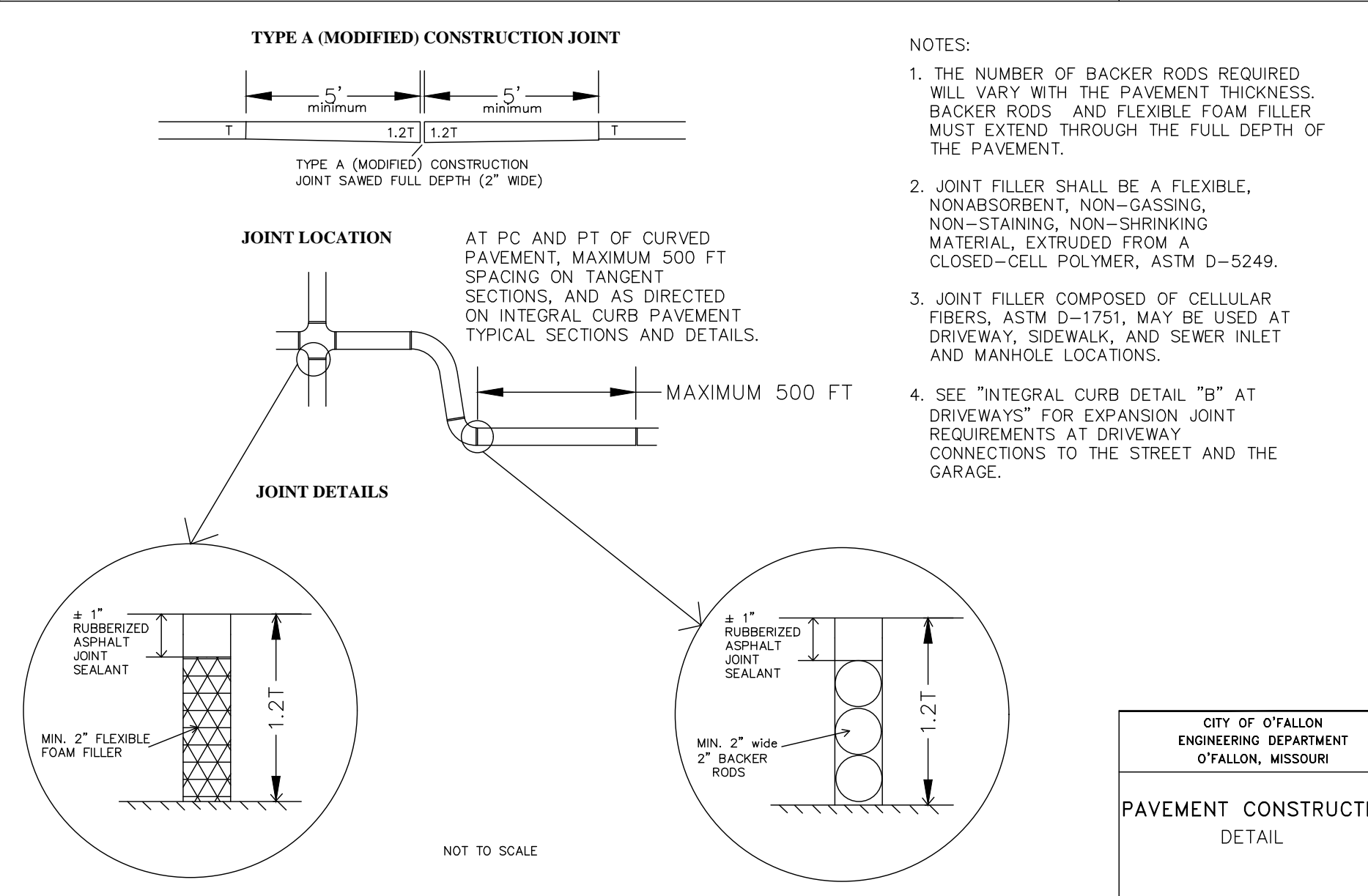
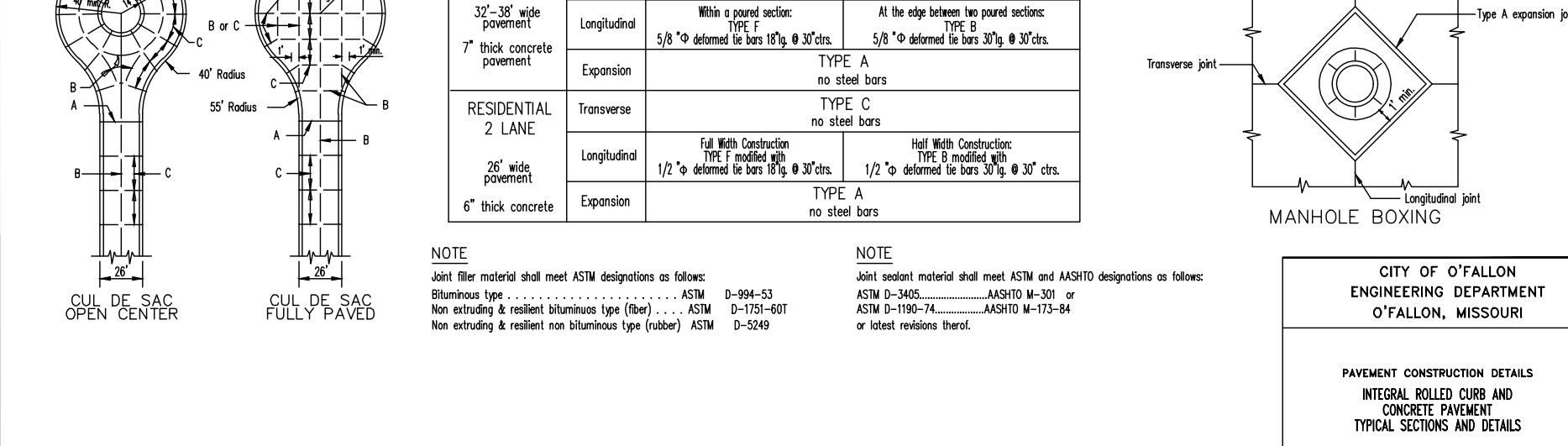
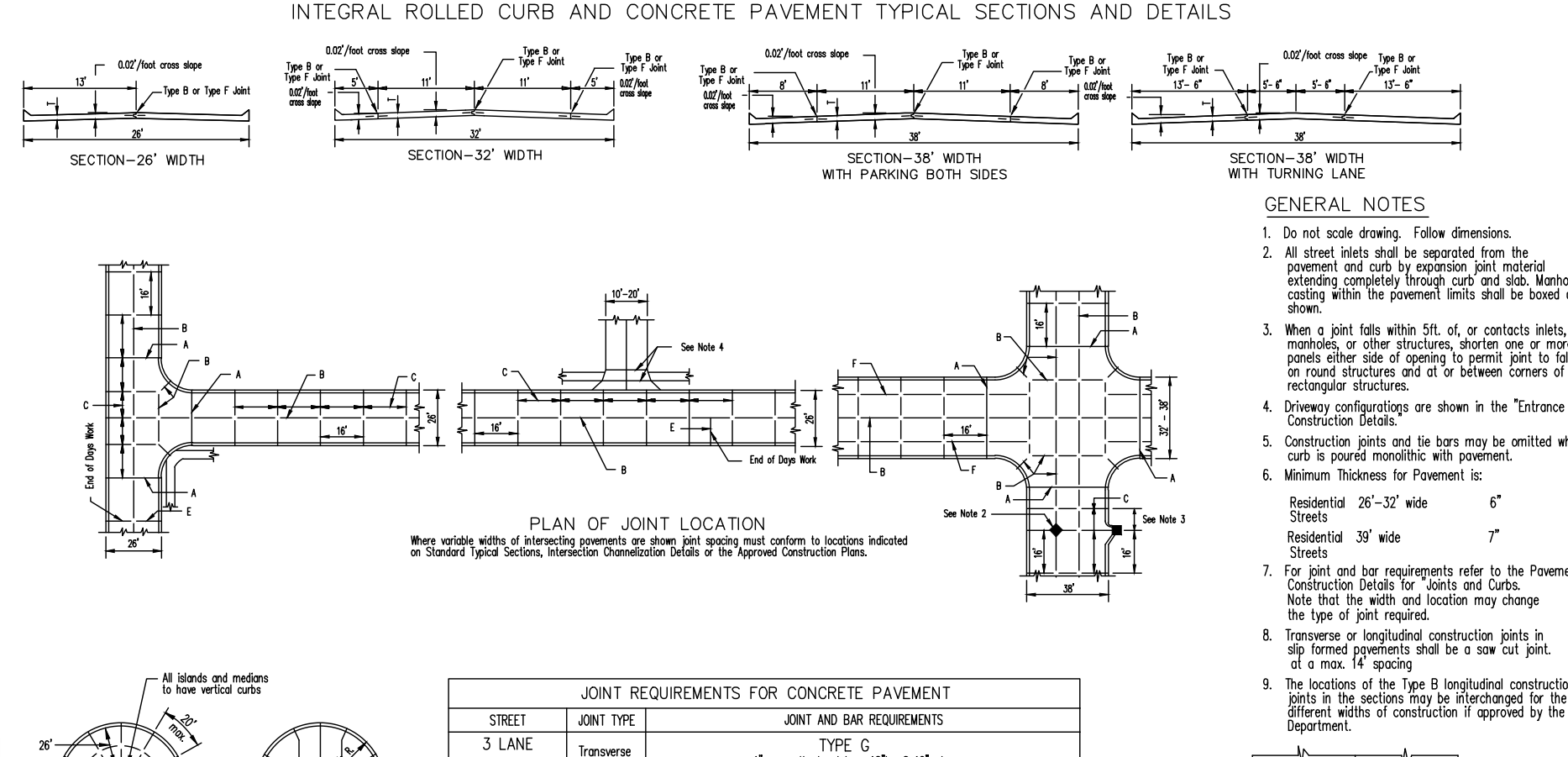
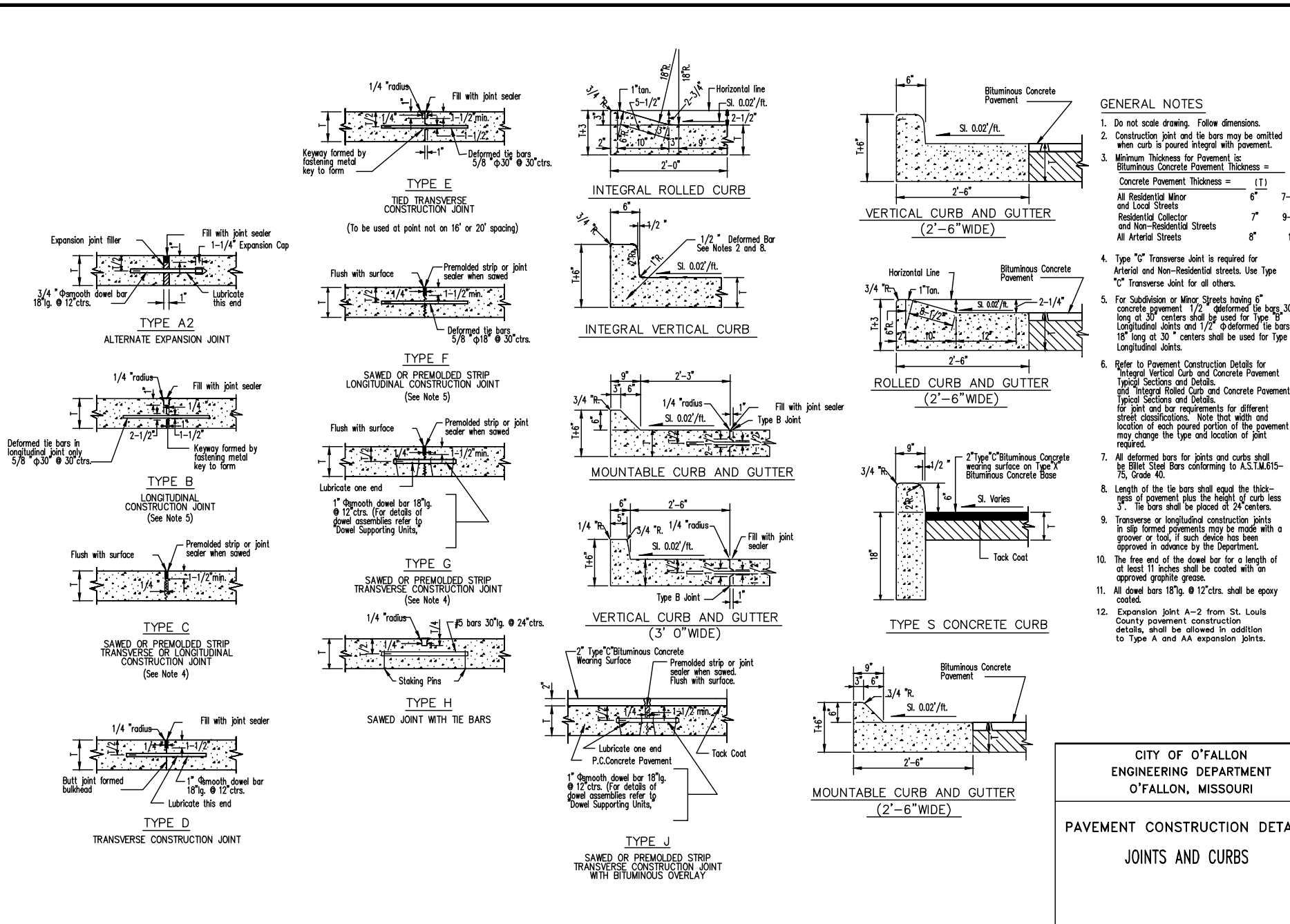
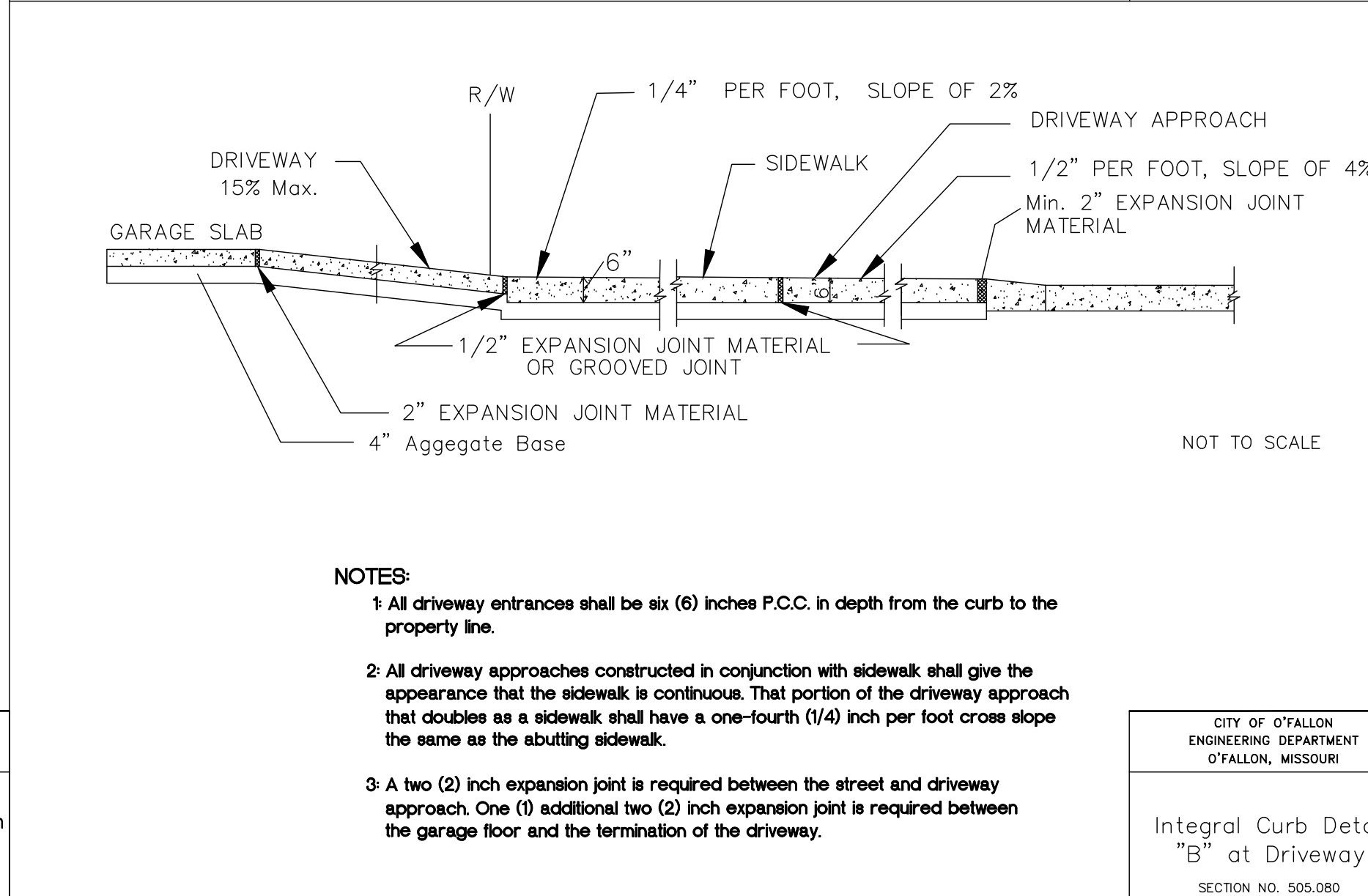
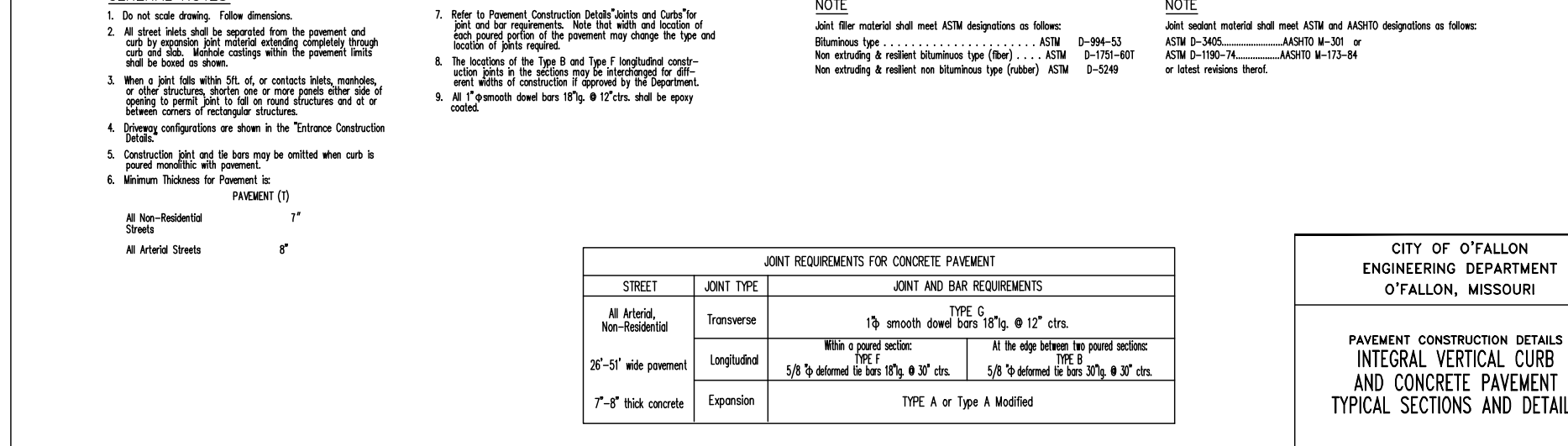
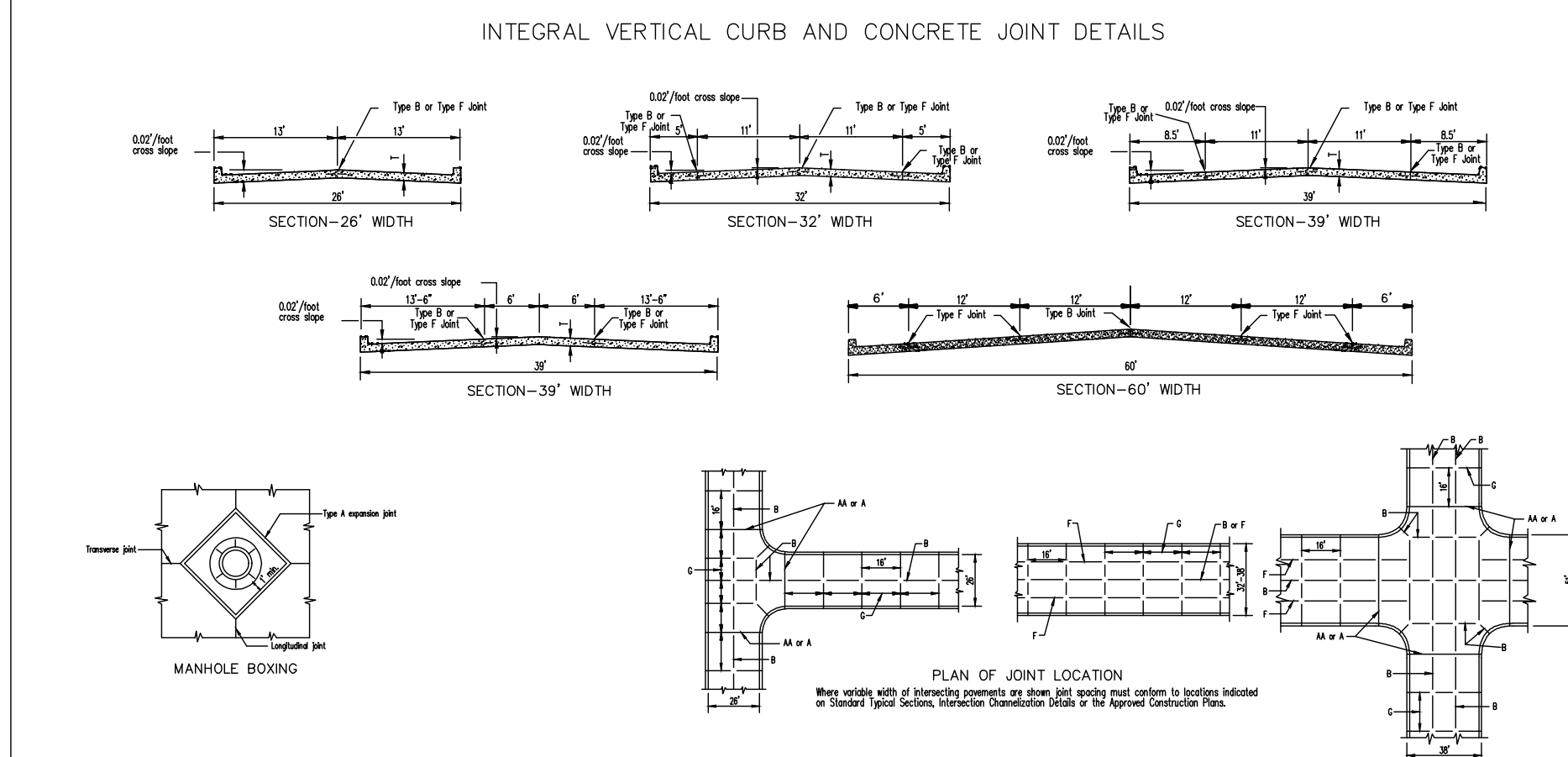
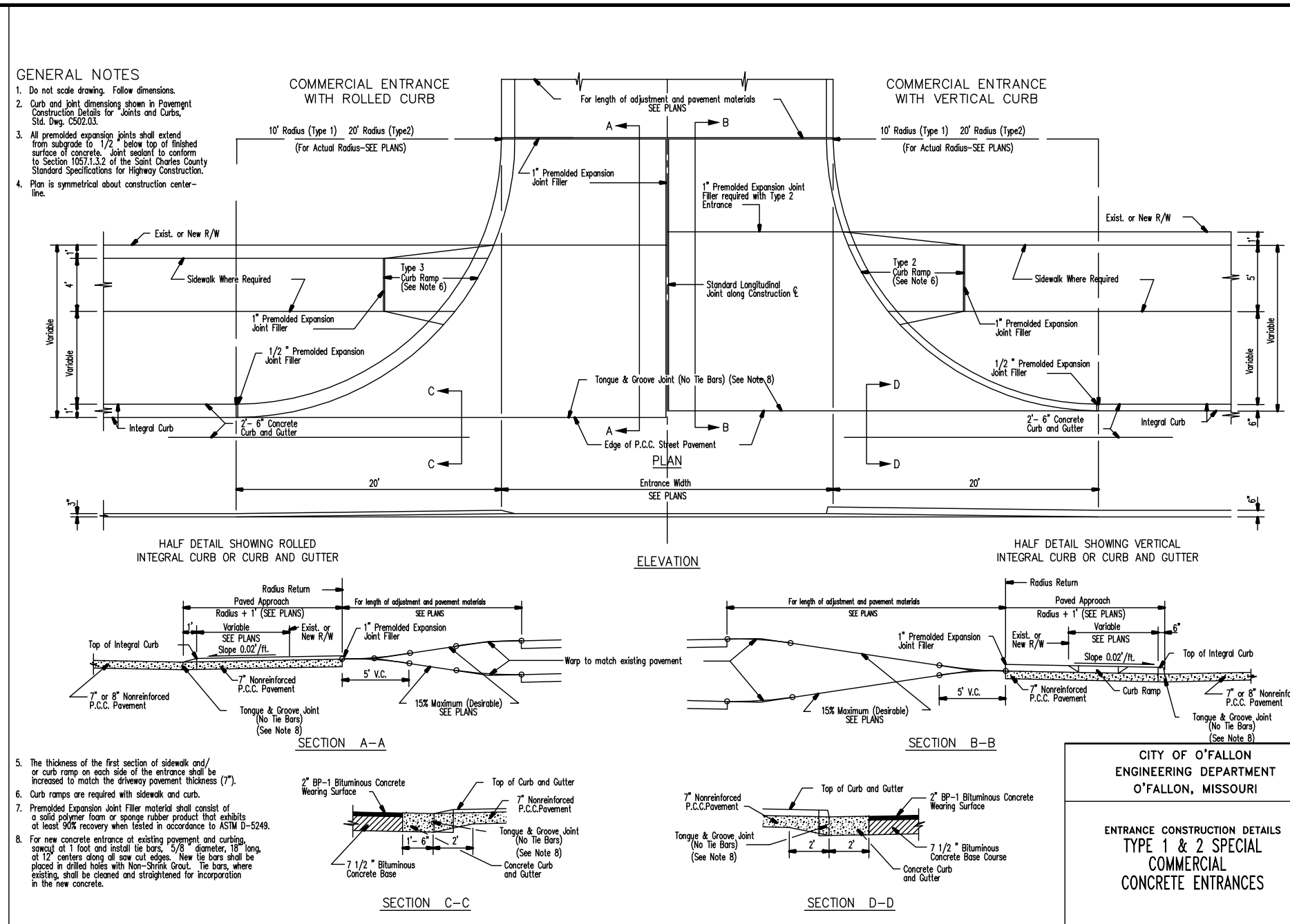
	ROW Width	Pavement Width	Lane Width	No. of Drive Lanes	Utility Easement	Design Speed
Minor Arterial	84	60	12	5	10	40
Collector	60	39	12	3	10	35
Residential Collector	56	32**	N/A	2	10	25
Minor Residential Local Access	50	26	N/A	2	10	25*

Notes:
 * = Can be varied with City Engineer's approval
 ** = Detail to match minor residential street with wider pavement
 - these requirements may be varied by other City ordinances
 - these standards are minimum standards
 - Parkway options can be provided as indicated above

Designer will provide roadway cross section and joint locations in a separate detail drawing.

CITY OF O'FALLON
 ENGINEERING DEPARTMENT
 O'FALLON, MISSOURI

Typical Pavement Design
SECTION NO. 405370



PROJECT TITLE
 IMPROVEMENT PLANS
 MIDWAY TRAILERS INC DBA
 MISSOURI GREAT DANE

DETAILS
 PFS No. 90066MCOJ.DWG
 TASK 001

St. Peters
 22 Richmond Center Court
 St. Peters, MO 65276
 Phone (636) 397-1211
 Fax (636) 397-1104
 www.prs8.com

Pickett Ray & Silver
 Civil Engineering
 & Land Surveying
 Beyond Standard

ENGINEERS AUTHORIZATION
 I, KARL A. SCHENKE, P.E., PROFESSIONAL ENGINEER LICENSE 2003015039, AMOUNTING TO THE SET OF PLANS AUTHORIZED BY THE SEAL, SIGNATURE, AND DATE HEREON AFFIXED. RESPONSIBILITY IS ASSUMED BY ALL OTHER ENGINEERING PLANS INVOLVED IN THIS PROJECT AND SPECIALTIES EXCLUDED HEREUNDER AFTER THIS DATE, UNLESS REAUTHORIZED.

KARL A. SCHENKE, P.E.
 PROFESSIONAL ENGINEER LICENSE 2003015039

Developer / Owner Information
 STEVE + PATTI JONES
 PO BOX 275
 Benton, Missouri 63796

P+Z No. 17-012024
City No. 18-006464
Page No. 19 of 20

PAVEMENT CONSTRUCTION DETAILS
 JOINTS AND CURBS

PAVEMENT CONSTRUCTION DETAILS
 INTEGRAL ROLLED CURB AND CONCRETE PAVEMENT TYPICAL SECTIONS AND DETAILS

*** 12/12/2018, Review Set, NOT APPROVED FOR CONSTRUCTION ***