

| SYMBOL | QUANTITY | COMMON NAME | BOTANICAL NAME | HEIGHT | MIN. DIST FROM POWERLINE |
|--------|----------|------------------|-------------------|--------|--------------------------|
| ☉ | 13 | PIN OAK | QUERCUS PALUSTRIS | <45' | 45' |
| ☉ | 14 | PLUM PURPLE-LEAF | PRUNUS CERASIFERA | 15' | 15' |
| ☉ | 8 | JAPANESE MAPLE | ACER PALMATUM | 20' | 15' |
| ☉ | 14 | MUGO PINE | PINUS MUGO MUGHUS | 15' | 15' |

**CONIFER TREES MUST BE A MINIMUM OF 6' IN HEIGHT.
 **DECIDUOUS TREES MUST BE A MINIMUM OF 2" IN CALIPER

| PROJECT DATA | | | |
|--------------|---------------|------------------|---------------|
| BUILDINGS | PAVED AREAS | LANDSCAPED AREAS | TOTAL SQ. FT. |
| 27,106 (4%) | 232,514 (35%) | 395,926 (60%) | 655,546 |

L3.1-01 TREE STAKING/PLANTING DETAIL
N.T.S.

L3.1-02 SHRUB PLANTING DETAIL
N.T.S.

LANDSCAPE NOTES

- FINAL TREE SELECTION AND LOCATIONS SHALL BE SHOWN ON THE CONSTRUCTION PLANS.
- ALL TREES SHALL BE PLANTED PER SECTION 402.130 - TREE PLANTING STANDARDS - OF THE CITY OF FALLON MUNICIPAL CODE.
- DECIDUOUS TREES SHALL BE A MINIMUM OF 2" CALIPER AT TIME OF PLANTING.
- CONIFEROUS TREES SHALL BE A MINIMUM OF 6" IN HEIGHT AT TIME OF PLANTING.

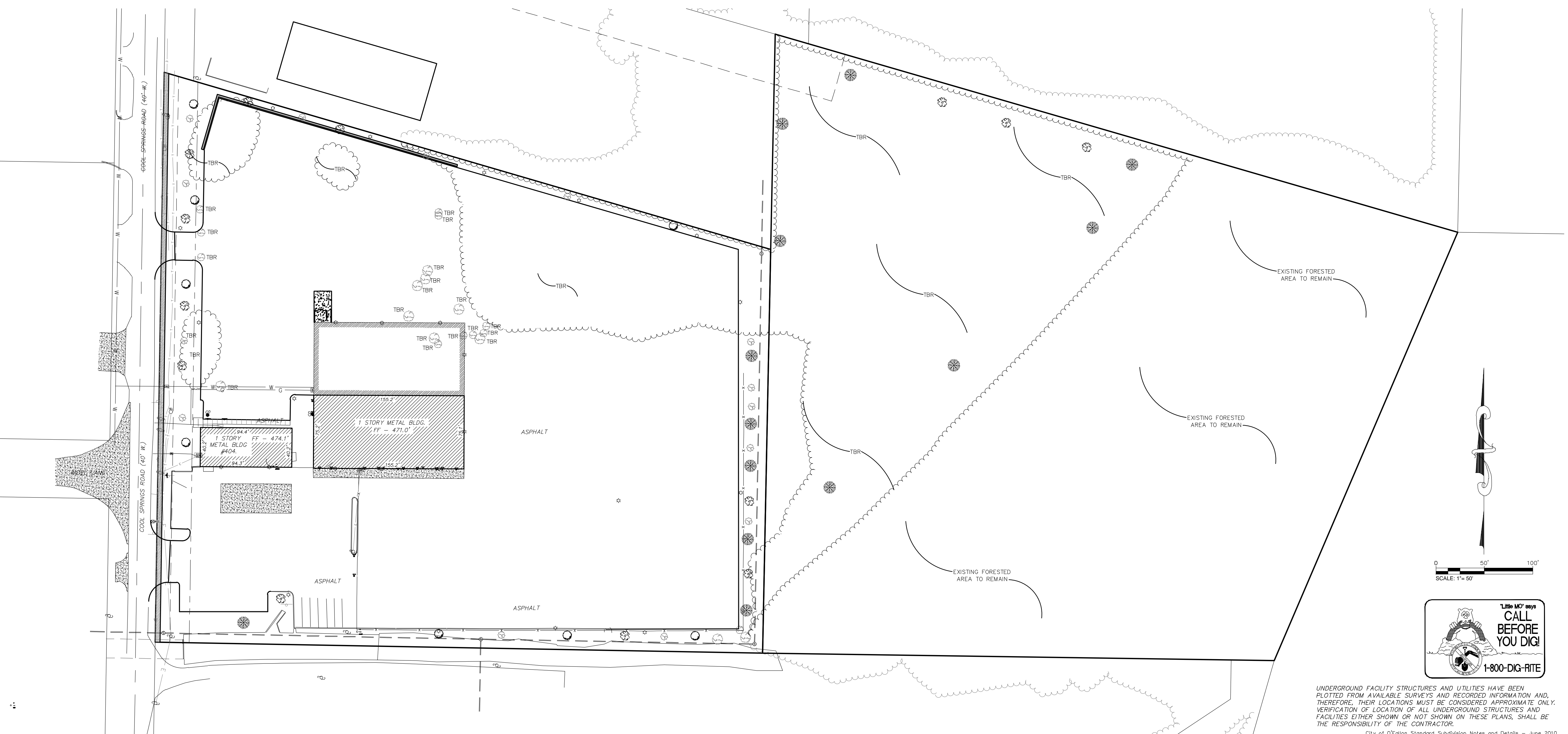
TREE PRESERVATION

EXISTING TREE MASS = 384,861 SQ FT
 TREE MASS REMAINING = 209,029 SQ FT
 PERCENT OF TREE MASS PRESERVED = 54.3%

LANDSCAPE CALCULATIONS

STREET TREES: 1 TREE PER EVERY 40.00' OF PUBLIC/Private STREET FRONTAGE.
 TREES REQUIRED: 586' * 1 TREE/EVERY 40.00' = 15 REQUIRED
 SITE TREES: 1 PER 4,000 S.F. OPEN SPACE 396,616 S.F. OPEN SPACE/4,000 = 99 TREES
 TREES PROVIDED: 15 STREET TREES + 20 SITE TREES = 35 TREES plus existing forested area to remain

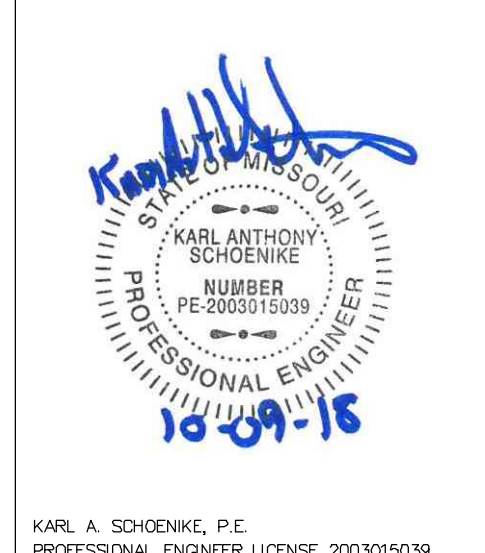
PARKING LOT LANDSCAPING:
 NUMBER OF PROPOSED PARKING STALLS = 47
 LANDSCAPING AREA REQUIRED = 47 * 270 * 6% = 762 SQ FT
 LANDSCAPING PROVIDED = 3,370 SQ FT



PROJECT TITLE
GRADING PLANS
 MIDWAY TRAILERS INC DBA
 MISSOURI GREAT DANE
LANDSCAPING PLANS
 PFS No. 90056MOCGD.00F
 TASK 001

PICKETT, RAY & SILVER INC
 CIVIL ENGINEERING, LAND SURVEYING,
 AND NATURAL RESOURCES SERVICES
 S.L. PETERS
 22 Richmond Center Court
 St. Peters, MO 65376
 Phone (636) 397-1211 Fax (636) 397-1104
 www.prs3.com 1-800-706-3818

ENGINEER'S AUTHENTICATION
 THE RESPONSIBILITY FOR PROFESSIONAL ENGINEERING LIABILITY ON THIS PROJECT IS HEREBY LIMITED TO THE SET OF PLANS AUTHENTICATED BY THE SEAL, SIGNATURE, AND DATE HEREON AFFIXED. RESPONSIBILITY IS DISCLAIMED FOR ALL OTHER ENGINEERING PLANS INVOLVED IN THIS PROJECT AND SPECIALLY EXCLUDED HEREON AFTER THIS DATE IN THE MANNER INDICATED.
PICKETT, RAY & SILVER, INC.
 L.S.E. #2216



KARL A. SCHENKE, P.E.
 PROFESSIONAL ENGINEER LICENSE 20030150339

Developer / Owner Information
STEVE + PATTI JONES
 PO BOX 275
 Benton, Missouri 63796

P+Z No. 17-012024
 City No. 18-006464
 LANDSCAPING PLANS

Page No. 07 of 08

UNDERGROUND FACILITY STRUCTURES AND UTILITIES HAVE BEEN PLOTTED FROM AVAILABLE SURVEYS AND RECORDED INFORMATION AND, THEREFORE, THEIR LOCATIONS MUST BE CONSIDERED APPROXIMATE ONLY. VERIFICATION OF LOCATION OF ALL UNDERGROUND STRUCTURES AND FACILITIES EITHER SHOWN OR NOT SHOWN ON THESE PLANS, SHALL BE THE RESPONSIBILITY OF THE CONTRACTOR.
 City of Fallon Standard Subdivision Notes and Details - June 2010

P:\90056 MOCGD\001DWG\Output\GRADING PLAN SET\05 - LANDSCAPING - GRADING.dwg

*** 10/09/2018: GRADING PLAN SET ***