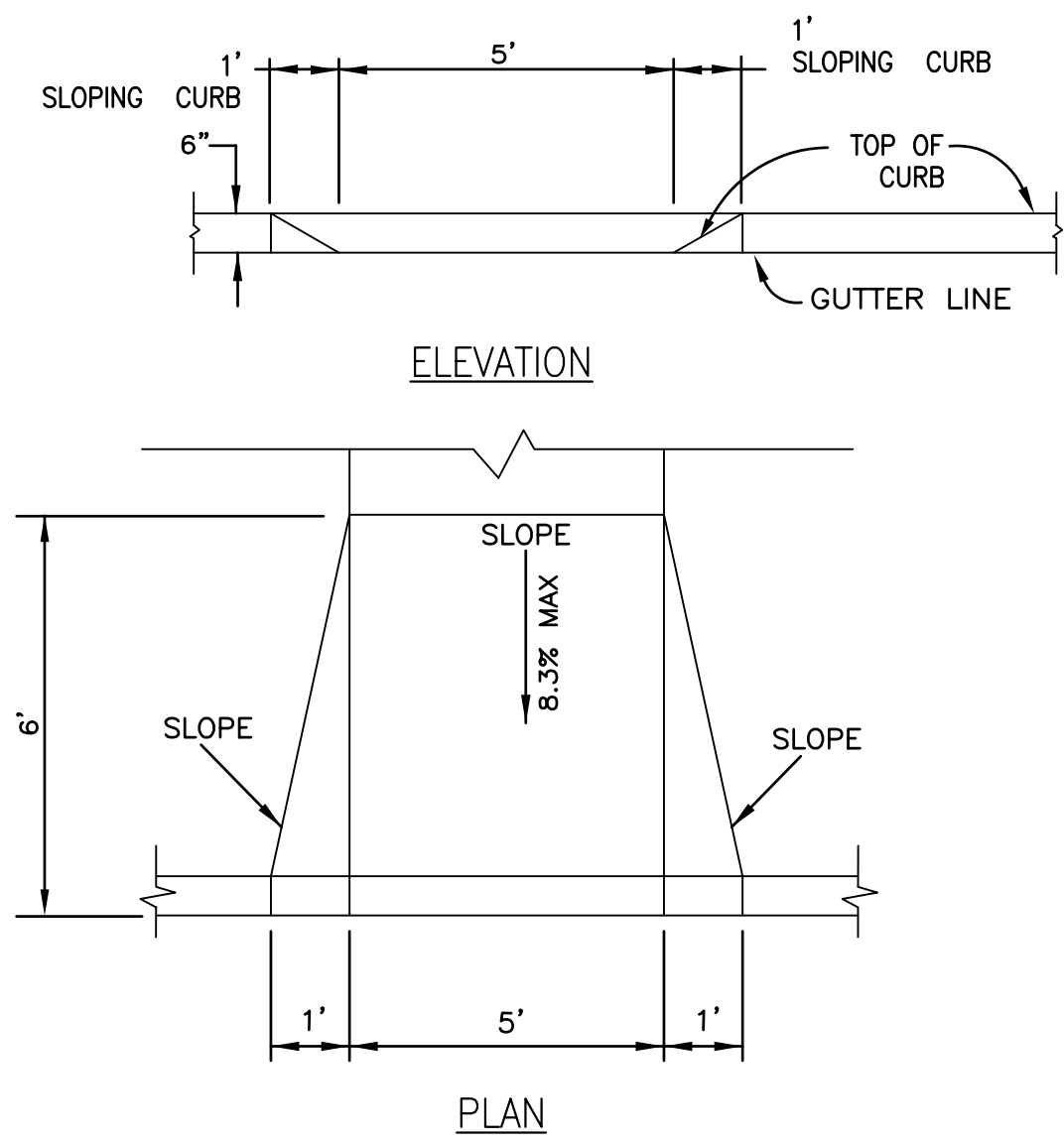
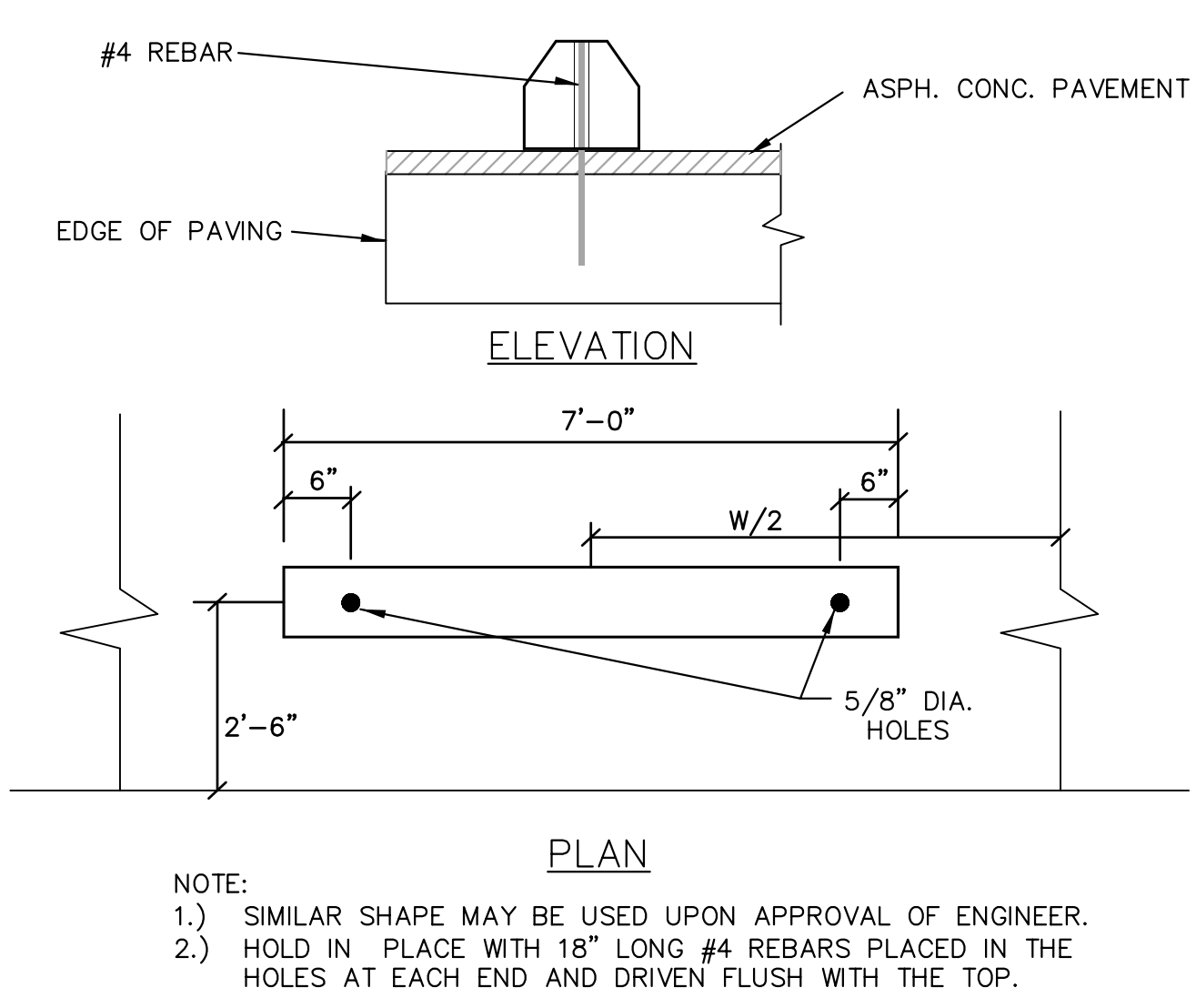


**12 STOP & NO PARKING SIGN DETAIL**  
SCALE: N.T.S. REF. DWG. C4.0



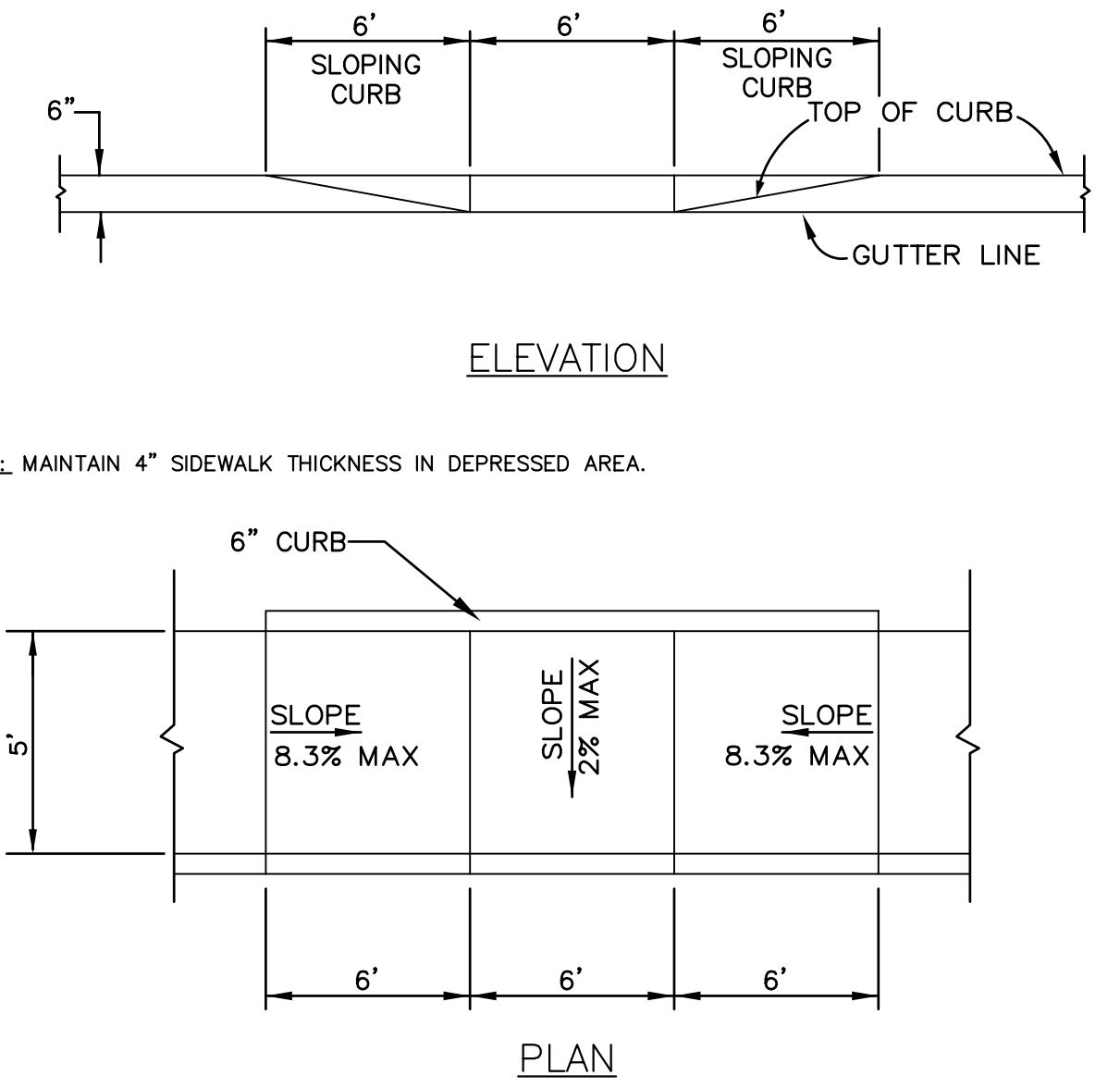
**9 ACCESSIBLE RAMP DETAIL (TYPE 1)**  
SCALE: N.T.S. REF. DWG. C4.0

NOTE: MAINTAIN 4" SIDEWALK THICKNESS IN DEPRESSED AREA.

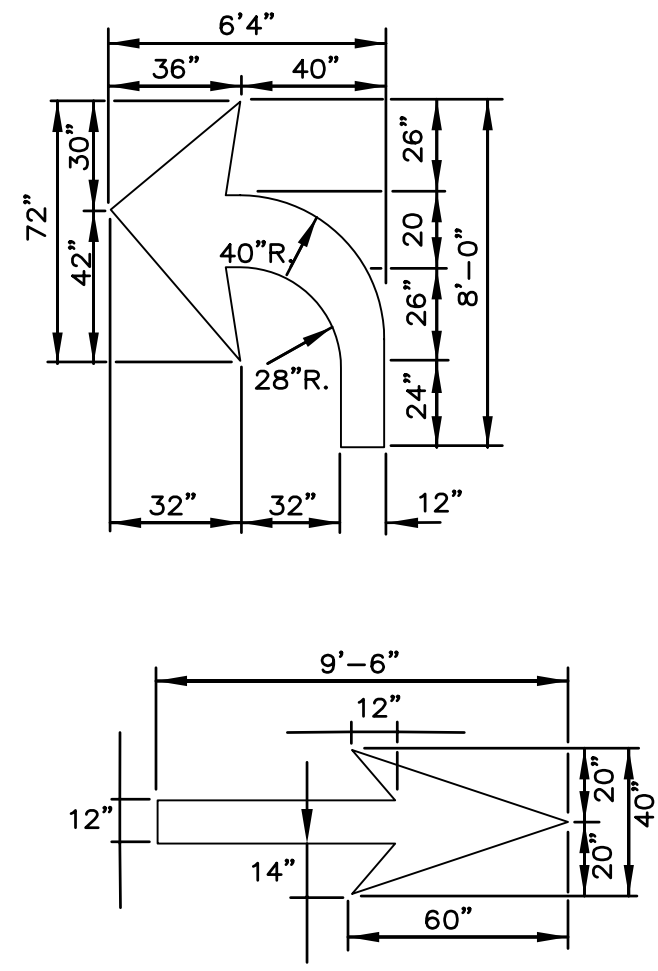


**6 WHEEL STOP DETAIL**  
SCALE: N.T.S. REF. DWG. C4.0

NOTE:  
1.) SIMILAR SHAPE MAY BE USED UPON APPROVAL OF ENGINEER.  
2.) HOLD IN PLACE WITH 18" LONG #4 REBARS PLACED IN THE HOLES AT EACH END AND DRIVEN FLUSH WITH THE TOP.

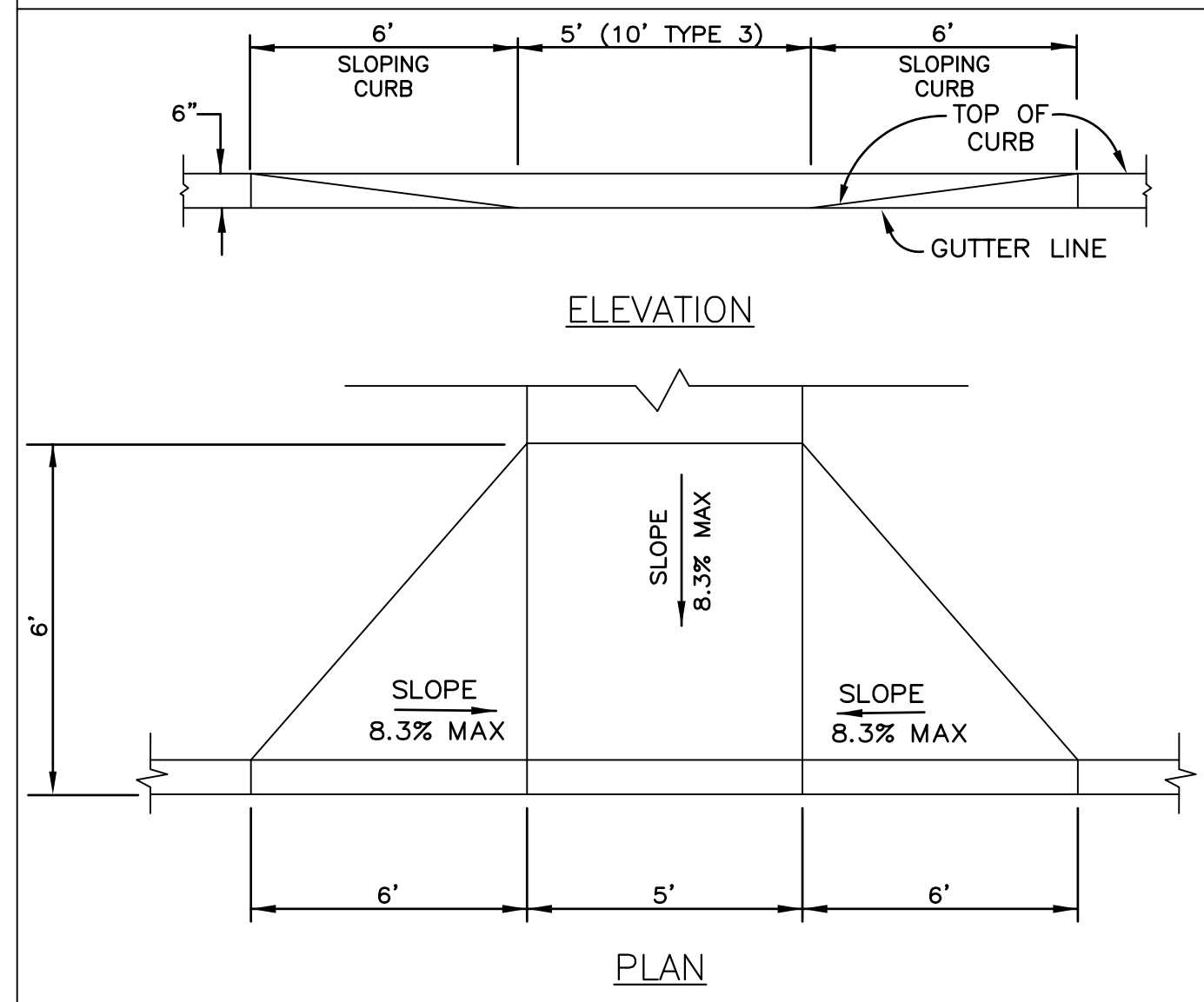


**3 ACCESSIBLE RAMP DETAIL (TYPE 3)**  
SCALE: N.T.S. REF. DWG. C4.0



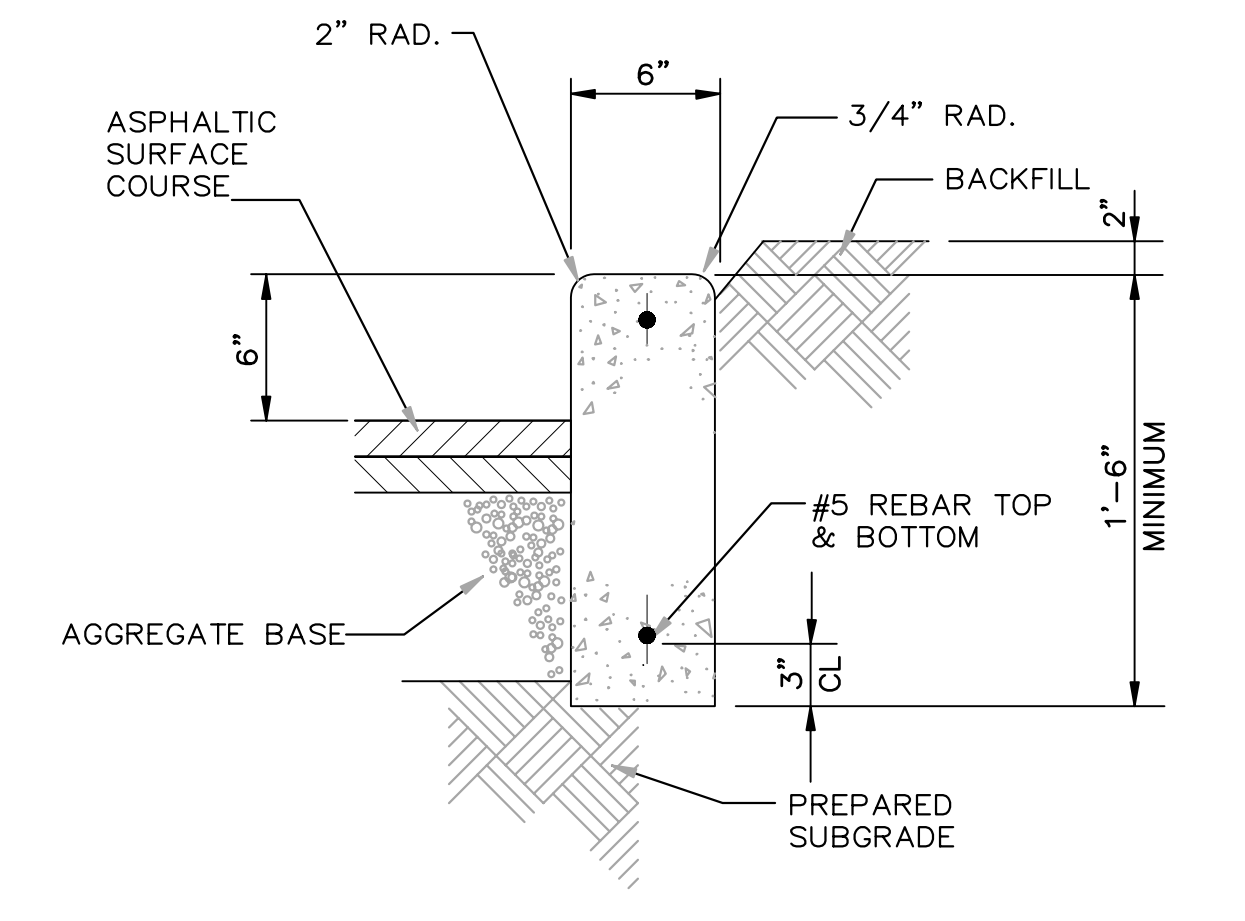
**13 DIRECTION ARROWS DETAIL**  
SCALE: N.T.S. REF. DWG. C4.0

NOTE: DIRECTIONAL ARROWS TO BE PAINTED WHITE

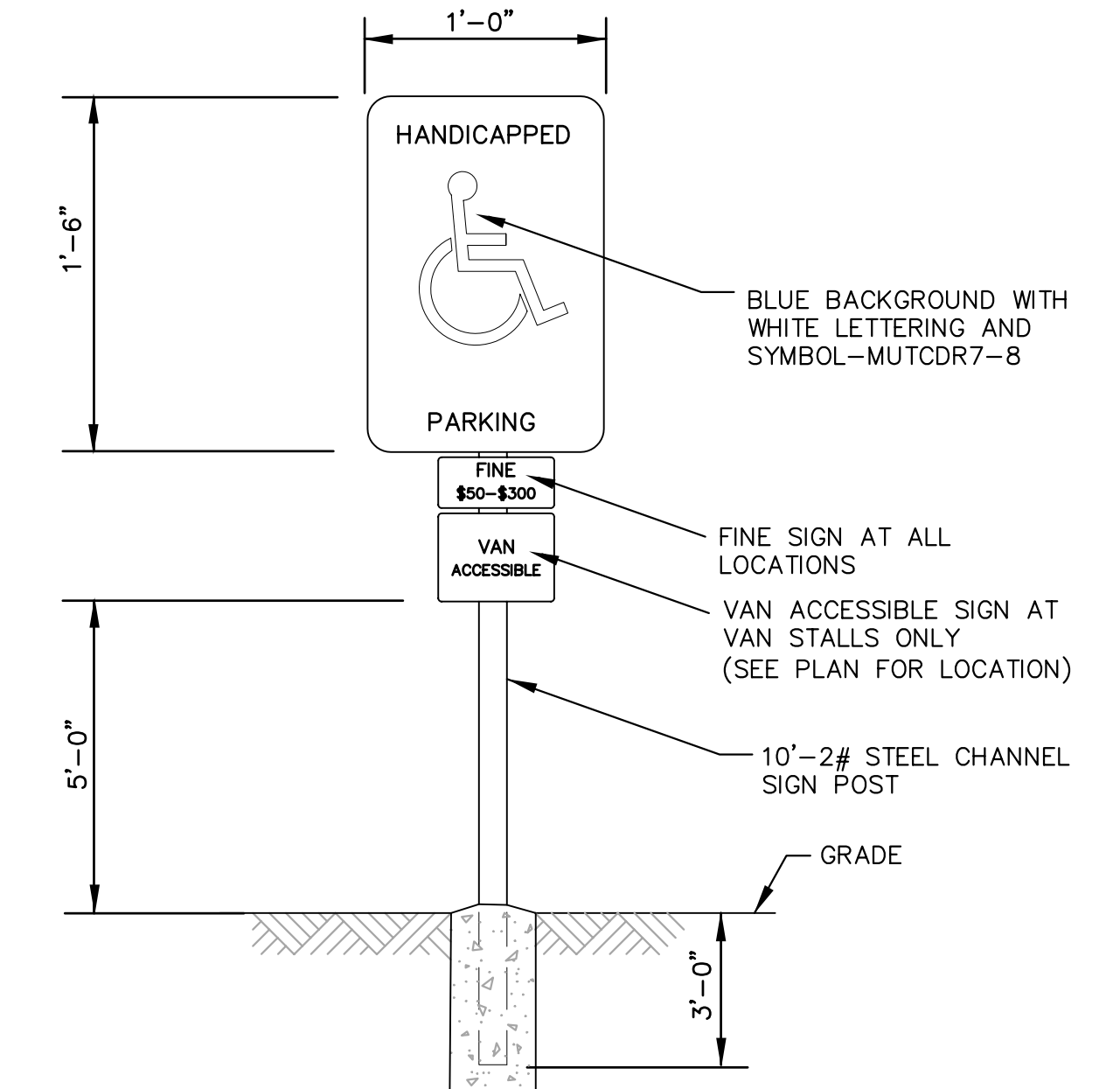


**8 ACCESSIBLE RAMP DETAIL (TYPE 2)**  
SCALE: N.T.S. REF. DWG. C4.0

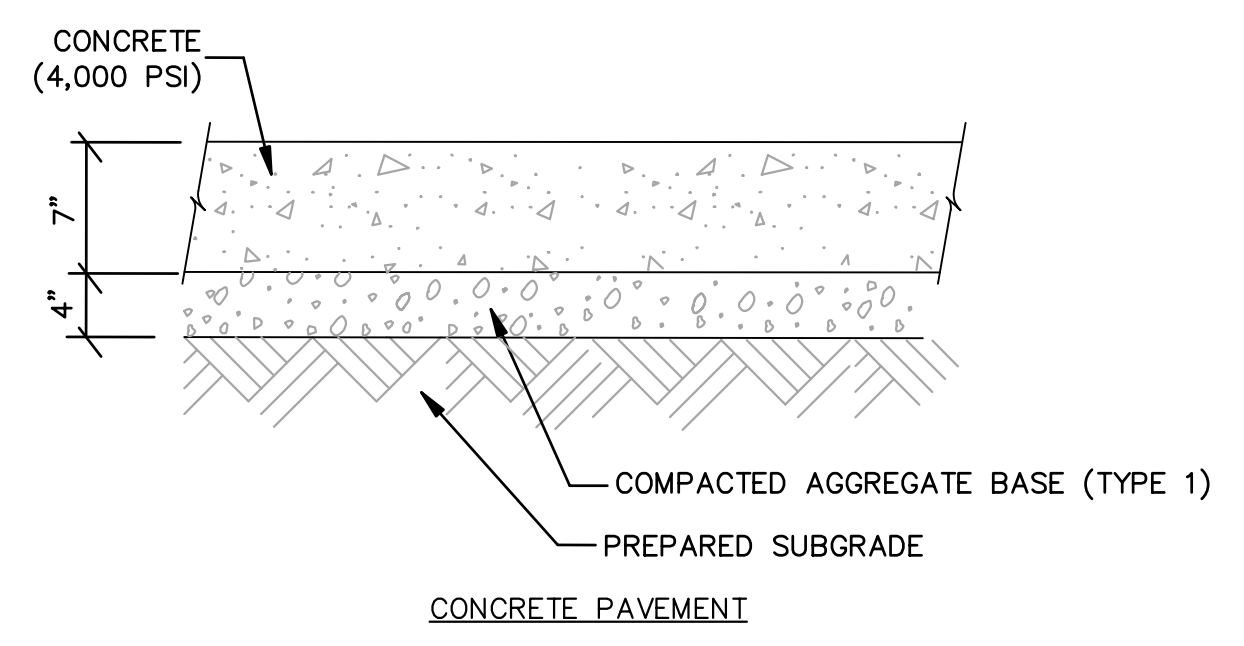
NOTE: MAINTAIN 4" SIDEWALK THICKNESS IN DEPRESSED AREA.



**5 VERTICAL CONCRETE CURB DETAIL**  
SCALE: N.T.S. REF. DWG. C4.0

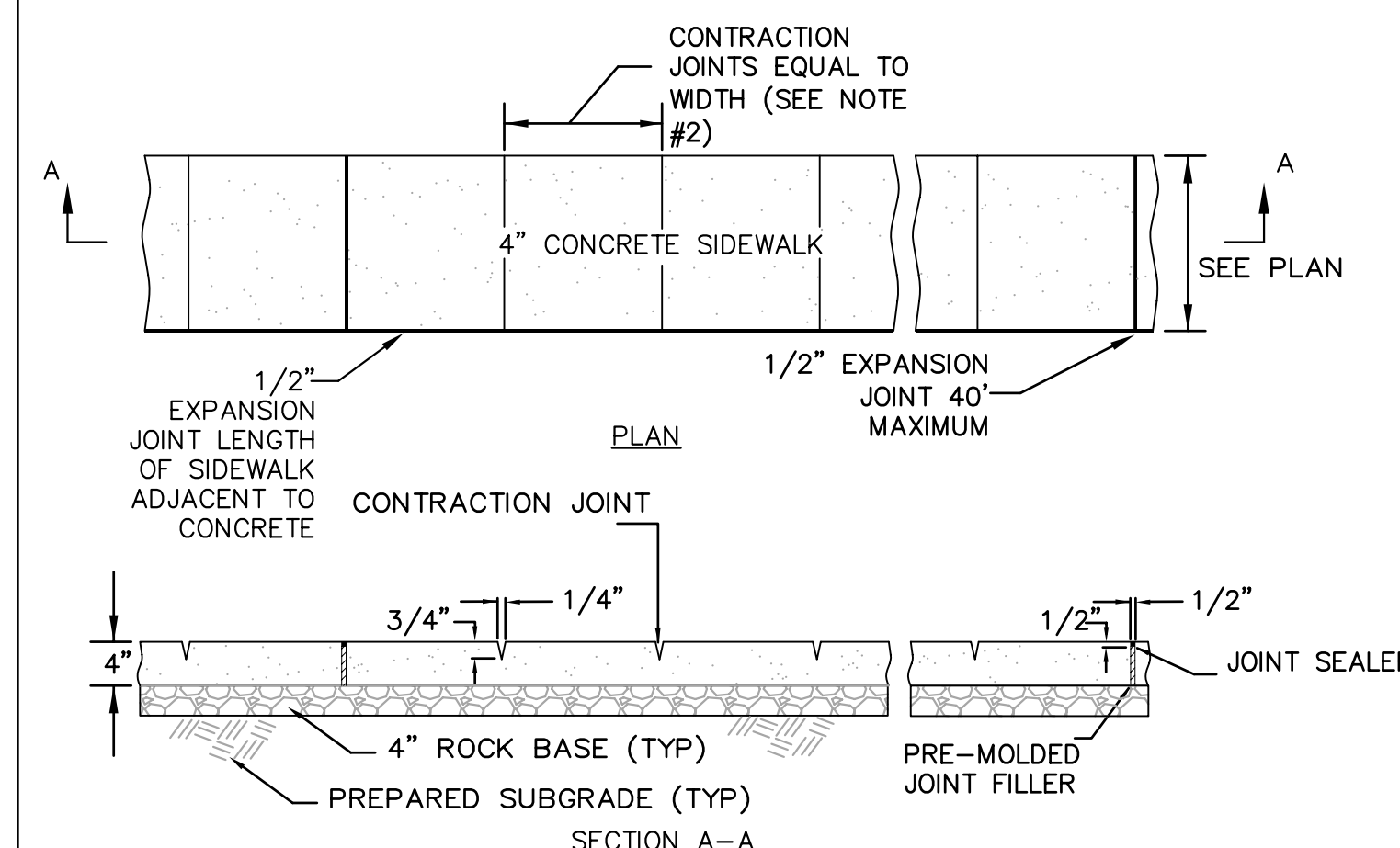


**2 ACCESSIBLE PARKING SIGN DETAIL**  
SCALE: N.T.S. REF. DWG. C4.0



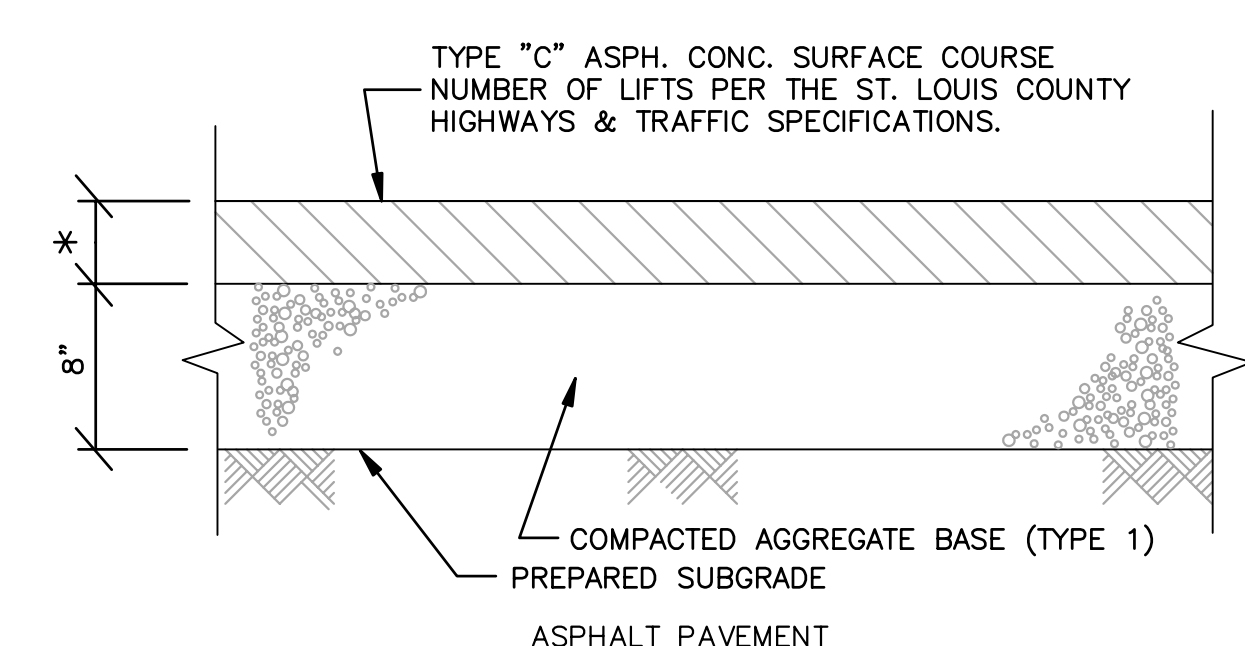
**14 HEAVY DUTY CONCRETE PAVEMENT DETAIL**  
SCALE: N.T.S. REF. DWG. C4.0

NOTE: PAVEMENT DETAILS SHOWN FOR REFERENCE ONLY. CONTRACTOR TO VERIFY FINAL PAVEMENT REQUIREMENTS WITH GEOTECH REPORT AND/OR OWNER.  
CONTRACTOR TO INSTALL CONCRETE PAVEMENT JOINTS PER THE AMERICAN CONCRETE INSTITUTES "GUIDE FOR DESIGN AND CONSTRUCTION OF CONCRETE PARKING LOTS"



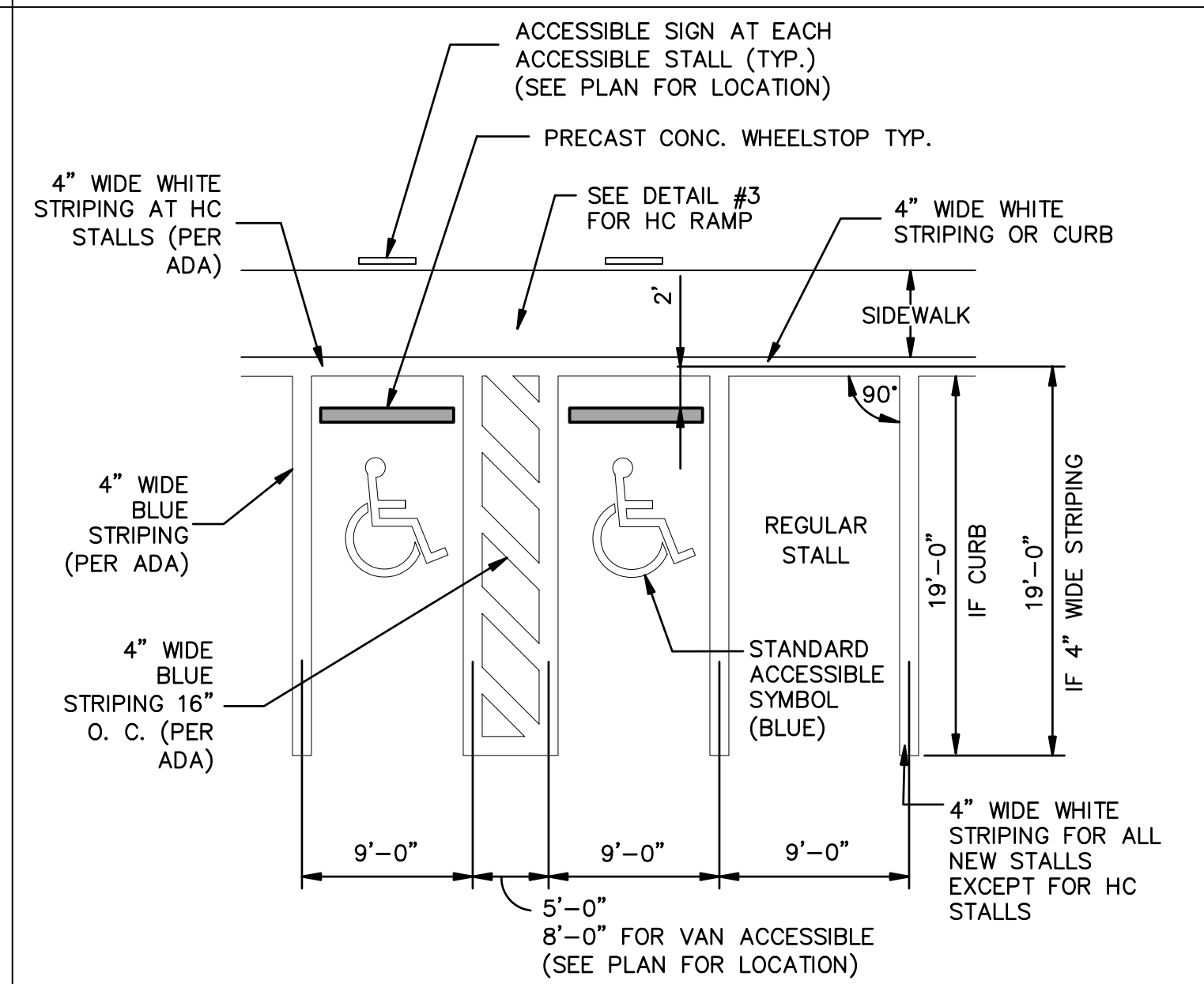
**7 CONCRETE SIDEWALK DETAIL**  
SCALE: N.T.S. REF. DWG. C4.0

1. CONTRACTOR TO COORDINATE WITH ARCHITECTURAL SITE PLANS FOR DETAILS OF ALL INTERIOR WALKS AND HARDSCAPE AREAS.  
2. DETAIL IS INTENDED FOR SIDEWALK WIDTHS OF 4 TO 6 FEET. CONTRACTOR SHALL COORDINATE WITH ARCHITECT OR ENGINEER FOR ANY SIDEWALK WIDTHS THAT EXCEED 6 FEET.



**4 ASPHALT PAVEMENT DETAIL**  
SCALE: N.T.S. REF. DWG. C4.0

NOTE:  
PAVEMENT DETAILS SHOWN FOR REFERENCE ONLY. CONTRACTOR TO VERIFY FINAL PAVEMENT REQUIREMENTS WITH GEOTECH REPORT AND/OR OWNER.  
\* 3" TYPE C ASPH. CONC. SHALL BE USED FOR PARKING LOT AREAS.  
\* 4" TYPE C ASPH. CONC. SHALL BE USED FOR DRIVE AISLES.  
COMPACT AGGREGATE BASE COURSE TO 95% MODIFIED PROCTOR PER ASTM D-1557.

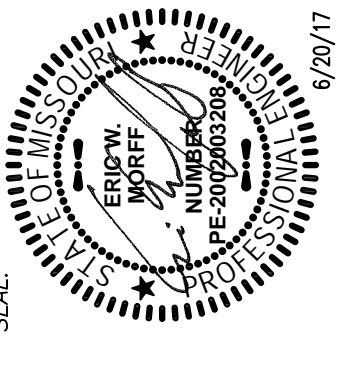


**1 ACCESSIBLE PARKING DETAIL**  
SCALE: N.T.S. REF. DWG. C4.0

DATE	NO	REVISION DESCRIPTION
6/29/17	4	CLIENT/CITY/AGENCY COMMENTS
6/29/17	3	REVISED SANITARY SEWER ALIGNMENT
6/28/17	2	CLIENT/CITY/AGENCY COMMENTS
6/22/17	1	CLIENT/CITY/AGENCY COMMENTS

DEVELOPER/OWNER:  
**40 DD SPORTS, LLC**  
4160 EHLMAIN ROAD  
ST. PETERS, MO 63376  
636-359-0621

THE PROFESSIONAL WHOSE SIGNATURE AND PERSONAL SEAL APPEAR HEREON HAS PREPARED THESE PLANS AND SPECIFICATIONS AND IS NOT PROVIDING ANY GUARANTEE OR WARRANTY, EXPRESS OR IMPLIED, FOR THE ACCURACY, COMPLETENESS, OR SUFFICIENCY OF THE INFORMATION PROVIDED HEREON. THE USER OF THESE PLANS AND SPECIFICATIONS SHALL BE RESPONSIBLE FOR OBTAINING ALL NECESSARY PERMITS AND FOR VERIFYING ALL INFORMATION PROVIDED HEREON. THE USER OF THESE PLANS AND SPECIFICATIONS SHALL BE RESPONSIBLE FOR OBTAINING ALL NECESSARY PERMITS AND FOR VERIFYING ALL INFORMATION PROVIDED HEREON.



MISSOURI RUSH SOCCER COMPLEX  
CALEDONIA DRIVE  
O'FALLON, MO 63366

PAVEMENT DETAILS

+ ST. LOUIS  
1155 1/2" Street  
Suite 100  
St. Louis, MO 63103  
314.984.9887 tel  
www.coilestl.com

**coile**  
CIVIL ENGINEERING / SURVEYING / PLANNING / LANDSCAPE ARCHITECTURE  
Coile & Associates, Inc. is an Equal Opportunity Employer. Race, Age, Sex, Religion & Ethnic Origin are prohibited in our "Title"

DESIGN/CALC BY: BSJ  
DRAWN BY: BSJ  
CHECKED BY: EWM  
DRAWING SCALE: AS SHOWN  
DATE: 4/28/17

Job Number  
**16-0042-A**  
Sheet Number  
**C12.2**

USER: Brian Johnson, TAB: Pavement, 3  
DATE: June 20, 2017 - 11:21:08 AM  
DRAWING: S:\0085\062016\16-0042\0042\_C-Plan\PlanSheets\0\_PAVEMENT DETAILS\_16-0042.dwg