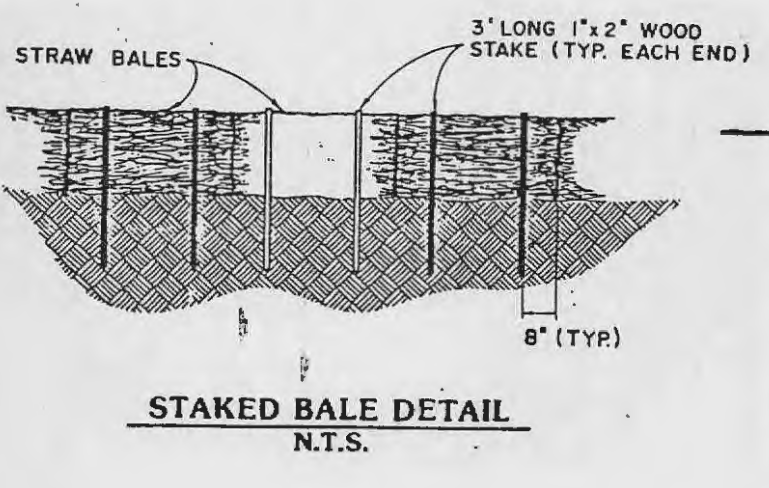
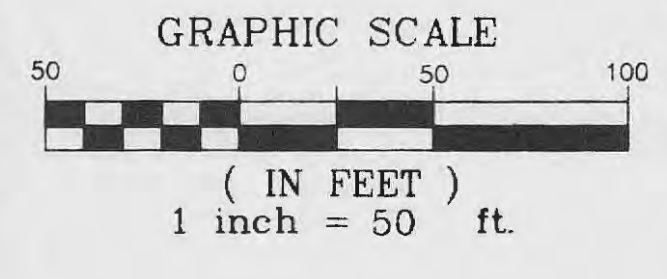
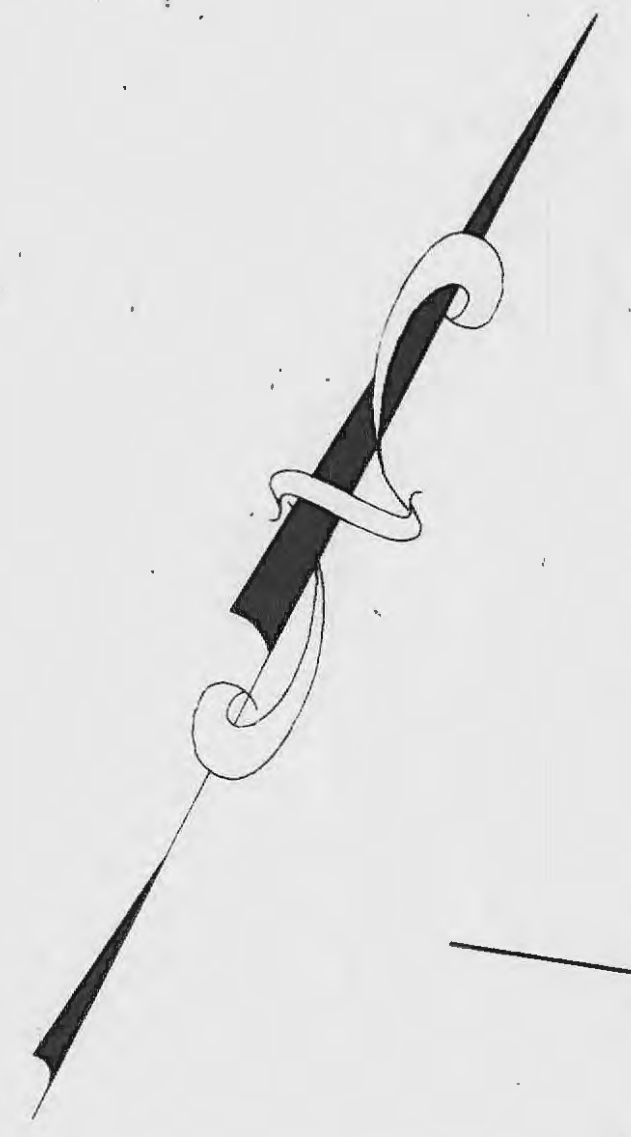


N / F
KAPLAN

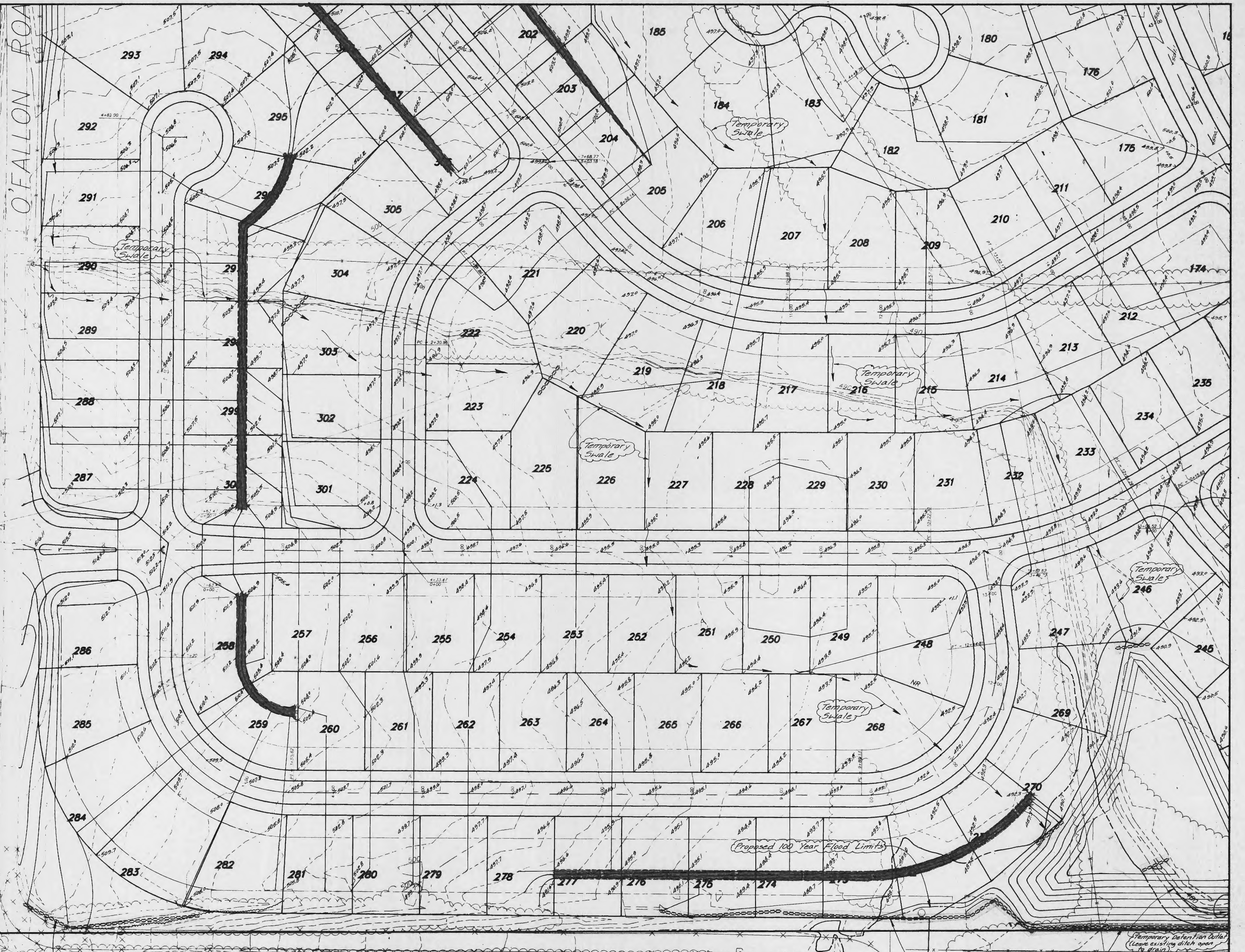


Siltation Control
SILTATION CONTROL SHALL CONSIST OF TEMPORARY BERM AND GRASSES TO DIVERT STORM WATER RUNOFF TO A NATURAL DISCHARGE POINT. (SEE GRADING PLAN FOR LOCATIONS.) AT EACH POINT THESE SHALL BE A DOUBLE ROW OF STRAW BALES WITH FOUR FEET OF SEPARATION BETWEEN ROWS. THE STRAW BALES SHALL BE PLACED WITH A ONE FOOT SEPARATION BETWEEN BALES AND STRAW BALES SHALL BE STAGGERED. IN AREAS WHERE A BERM AND STRAW BALE ARE NOT PRACTICAL, A SINGLE ROW OF STRAW BALES SHALL BE PLACED END TO END TO PREVENT ADJACENT PROPERTIES AND RIGHT-OF-WAYS FROM BEING RESPONSIBLE OF THE GRADING CONTRACTOR OR DEVELOPER IF SO AGREED. UPON COMPLETION OF STORM DRAIN, STRAW BALES SHALL BE PLACED IN ALL STRIPS OF APPROPRIATE SLOPES TO KEEP THEM OUT OF STORM DRAIN. THIS SHALL BE THE RESPONSIBILITY OF THE GRADING CONTRACTOR OR DEVELOPER IF SO AGREED. ALL STRAW BALES SHALL BE SECURELY ANCHORED AND PROPERLY MAINTAINED UNTIL ALL DISTURBED AREAS ARE PAVED OR VEGETATION ESTABLISHED.

The total yardage for this project is based on a 15% shrinkage factor.
This shrinkage factor is subject to change, due to soil conditions, (types and moisture content) weather conditions, and the percent compaction actually achieved. As a result, adjustments in final grades may be required.

Earth quantities obtained from aerial grid map, with contours at two foot intervals, with a tolerance of plus or minus 1 foot, or 1/2 contour interval.

The computed bid yardage is to finish grade and does not include removal of subgrade.



O'FALLON ROAD

Existing 100 Yr. Flood Limits
BIO YARDAGE : 293, 400 Cu. Yds.
(DOES NOT INCLUDE SUBGRADE)