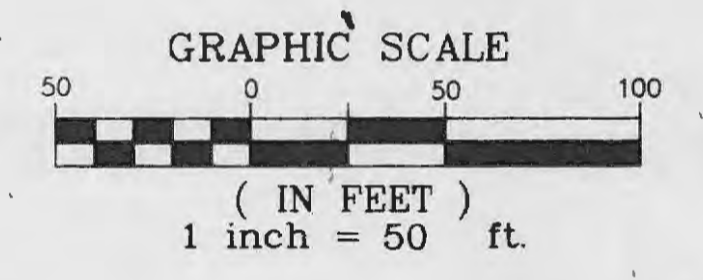
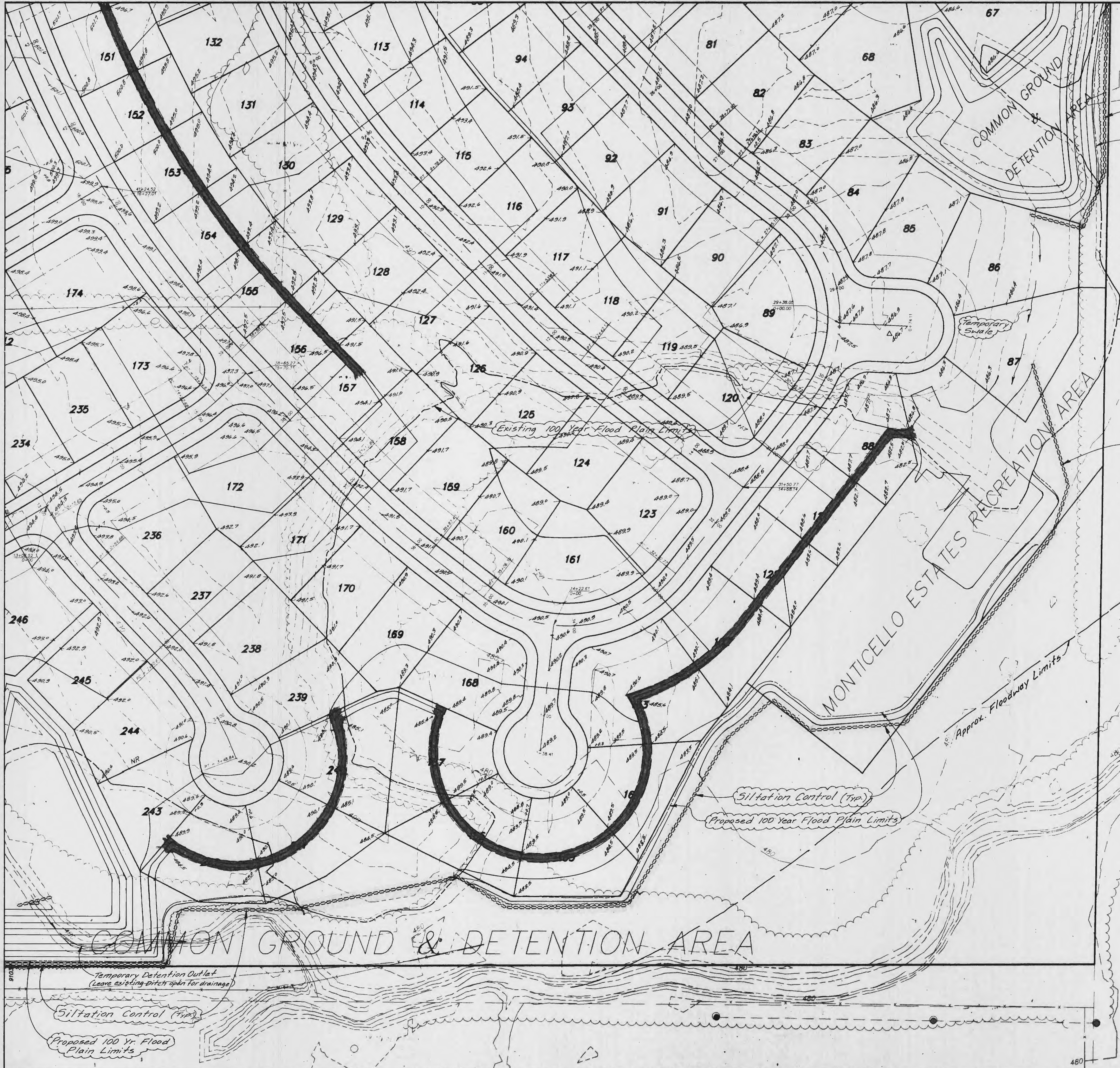
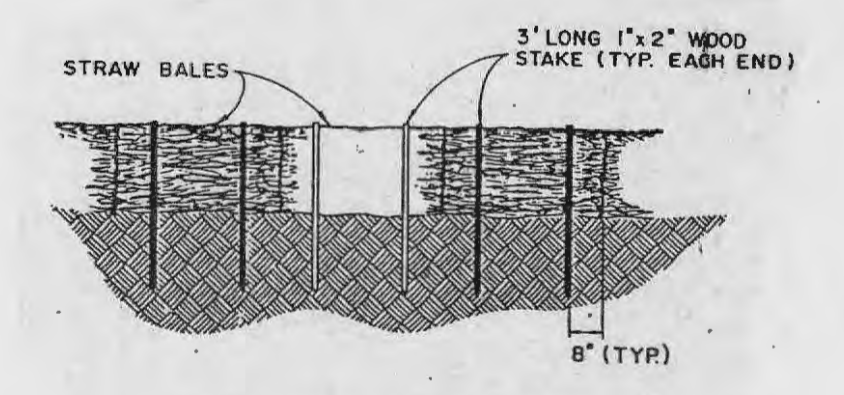


N / F  
 SOKOLIK  
 BK 1347 PG 1241



**Siltation Control**  
 SILTATION CONTROL SHALL CONSIST OF TEMPORARY BARRIERS AND BALES TO DIVERGE STORM WATERS AWAY TO A NATURAL DISCHARGE POINT. (SEE GRADING PLAN FOR LOCATIONS.) AT EACH POINT THESE SHALL BE A DOUBLE ROW OF STORM BALES WITH FIVE FEET OF SEPARATION BETWEEN ROWS. THE STORM BALES SHALL BE PLACED WITH A ONE FOOT SEPARATION BETWEEN BALES AND STORM BALES SHALL BE UTTERED. IN AREAS WHERE A ROW AND SWALE ARE NOT FEASIBLE, A SINGLE ROW OF STORM BALES SHALL BE PLACED END TO END TO PARTIALLY ALIGNED PARALLEL AND RIGHT-OF-WAY (THIS SHALL BE THE RESPONSIBILITY OF THE GRADING CONTRACTOR OR SUBCONTRACTOR IF SO AGREED). UPON COMPLETION OF STORM BARRIERS, STORM BALES SHALL BE PLACED ON ALL SIDES OF APPROXIMATE ELEVATIONS TO KEEP SILT OUT OF STORM SIDES (THIS SHALL BE THE RESPONSIBILITY OF THE GRADING CONTRACTOR OR THE DEVELOPER IF SO AGREED). ALL STORM BALES SHALL BE PROPERLY ANCHORED AND PROPERLY MAINTAINED UNTIL ALL DISTURBED AREAS ARE PAVED OR VEGETATION ESTABLISHED.



The total yardage for this project is based on a 15% shrinkage factor. This shrinkage factor is subject to change, due to soil conditions, (types and moisture content) weather conditions, and the percent compaction actually achieved. As a result, adjustments in final grades may be required.

Earth quantities obtained from aerial grid map, with contours at two foot intervals, with a tolerance of plus or minus 1 foot, or 1/2 contour interval.

The computed bid yardage is to finish grade and does not include removal of subgrade.

BID YARDAGE: 293,400 CU.YDS.  
 (DOES NOT INCLUDE SUBGRADE)