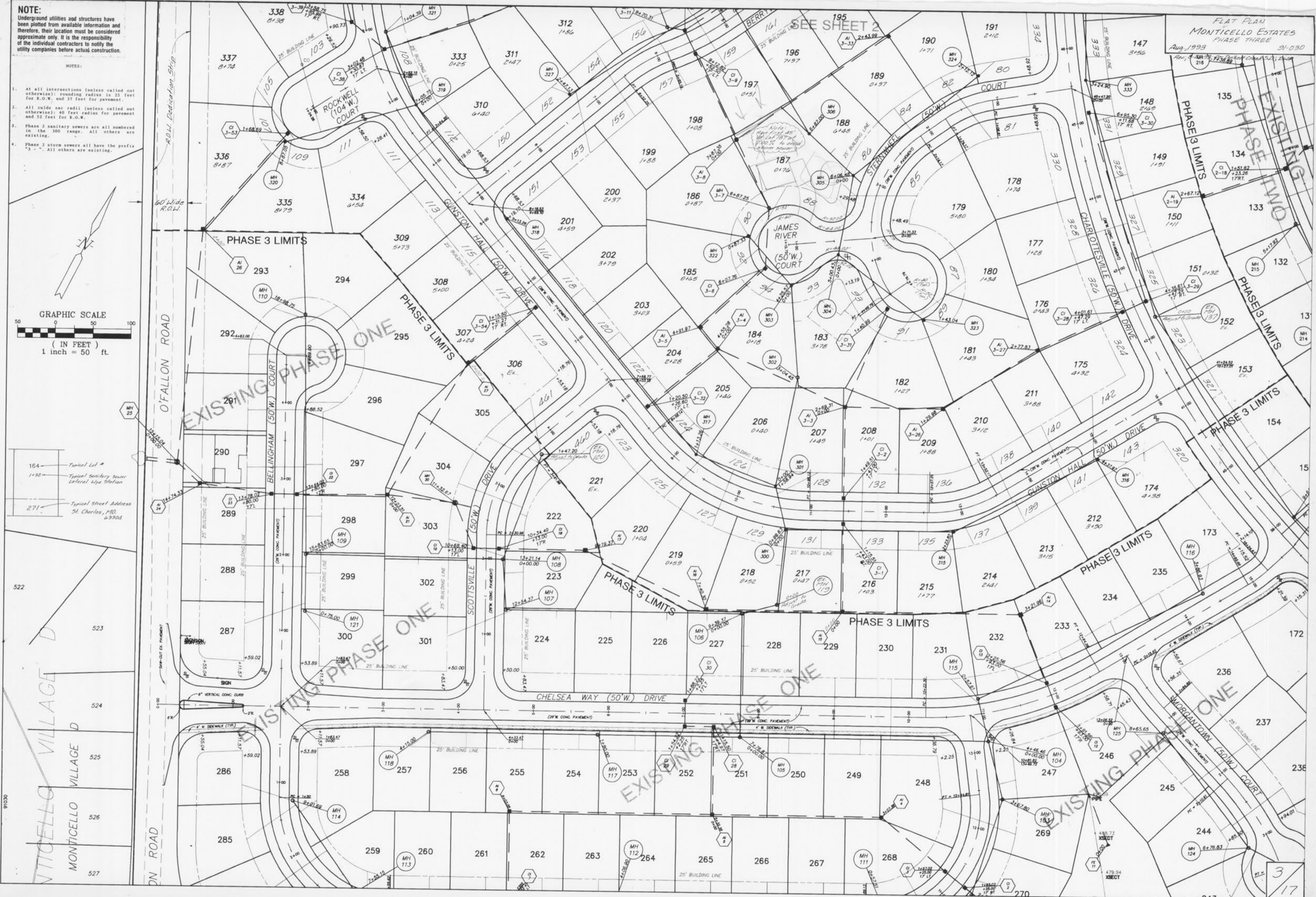
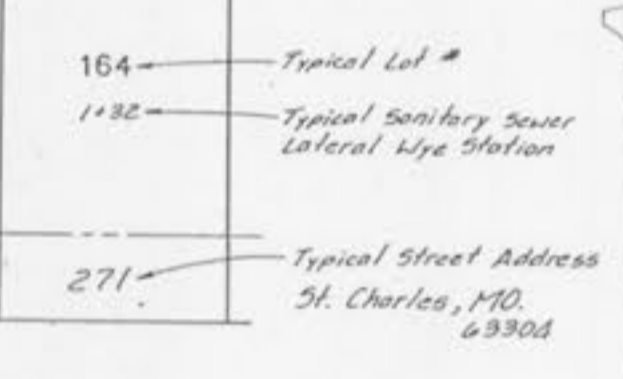
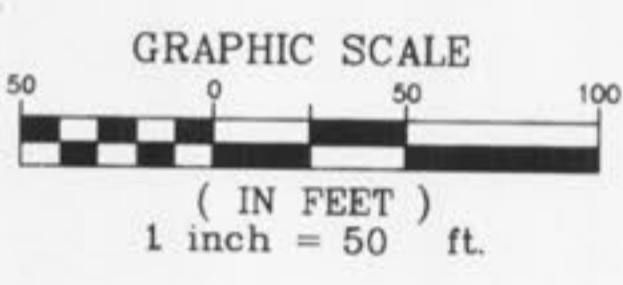
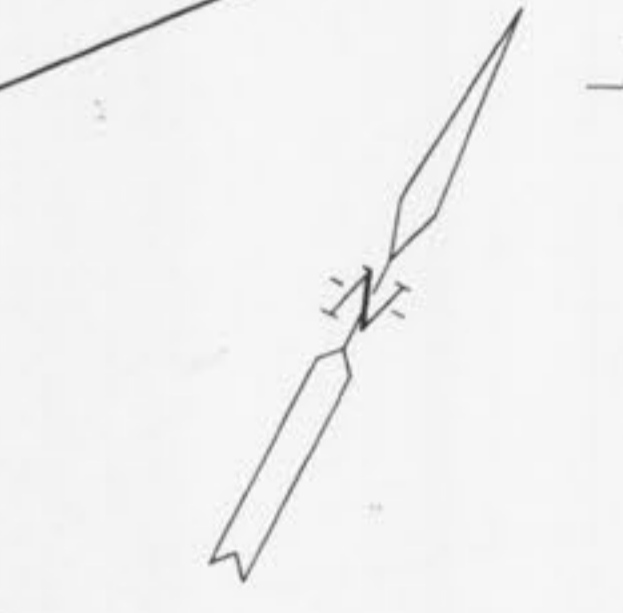


NOTE:
 Underground utilities and structures have been plotted from available information and therefore, their location must be considered approximate only. It is the responsibility of the individual contractors to notify the utility companies before actual construction.

- NOTES:**
- At all intersections (unless called out otherwise): rounding radius in 25 feet for R.O.W. and 37 feet for pavement.
 - All culds and radii (unless called out otherwise): 40 feet radius for pavement and 52 feet for R.O.W.
 - Phase 3 sanitary sewers are all numbered in the 300 range. All others are existing.
 - Phase 3 storm sewers all have the prefix "3-". All others are existing.



FLAT PLAN
 MONTICELLO ESTATES
 PHASE THREE
 Aug. 1993
 21-030