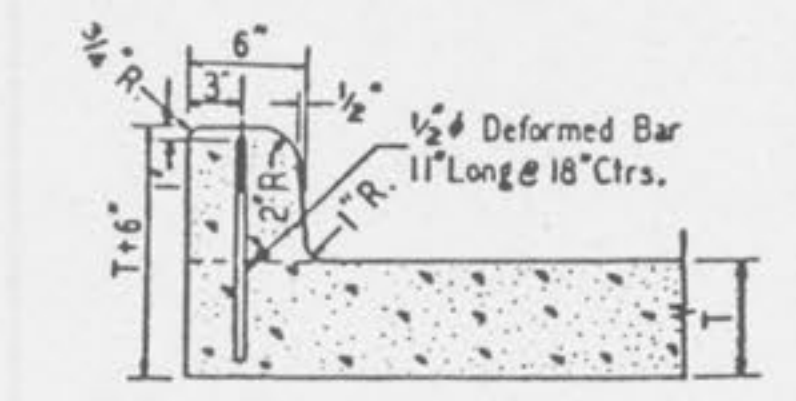
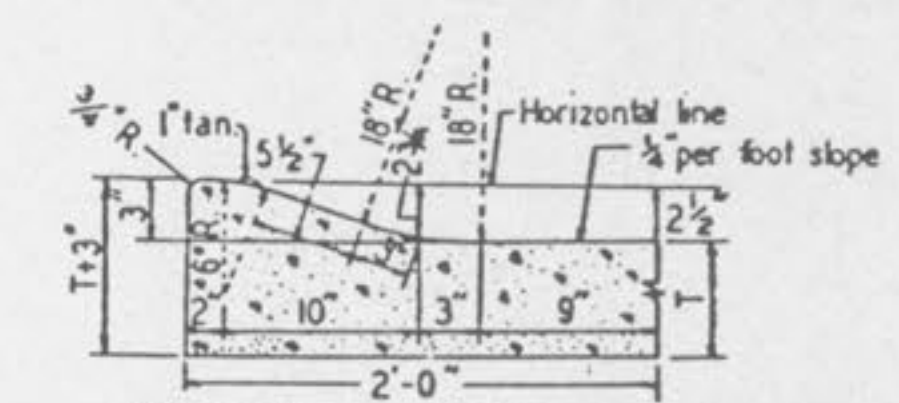


- Install 4-#4 Rebars at 15" o.c. hor.  
- Concrete to be 4000 p.s.i.

HEADWALL DETAIL EP #15116  
1/4" = 1' Scale

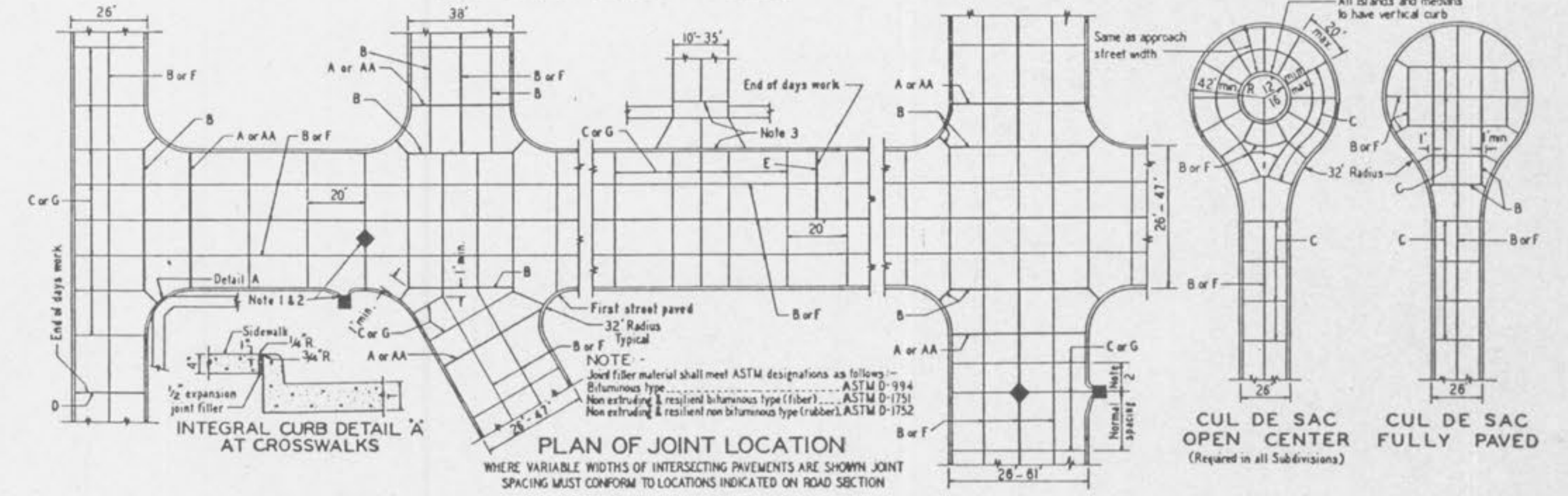


INTEGRAL VERTICAL CURB



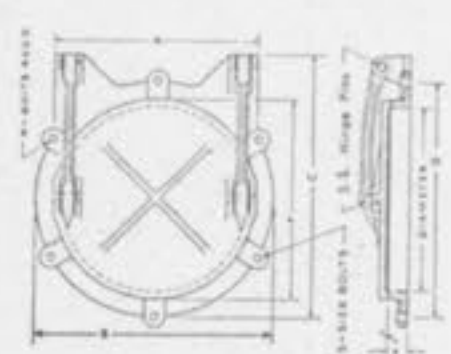
INTEGRAL ROLLED CURB

INTEGRAL CURB PAVEMENT TYPICAL SECTIONS AND DETAILS



TYPE SF  
Attached to concrete wall

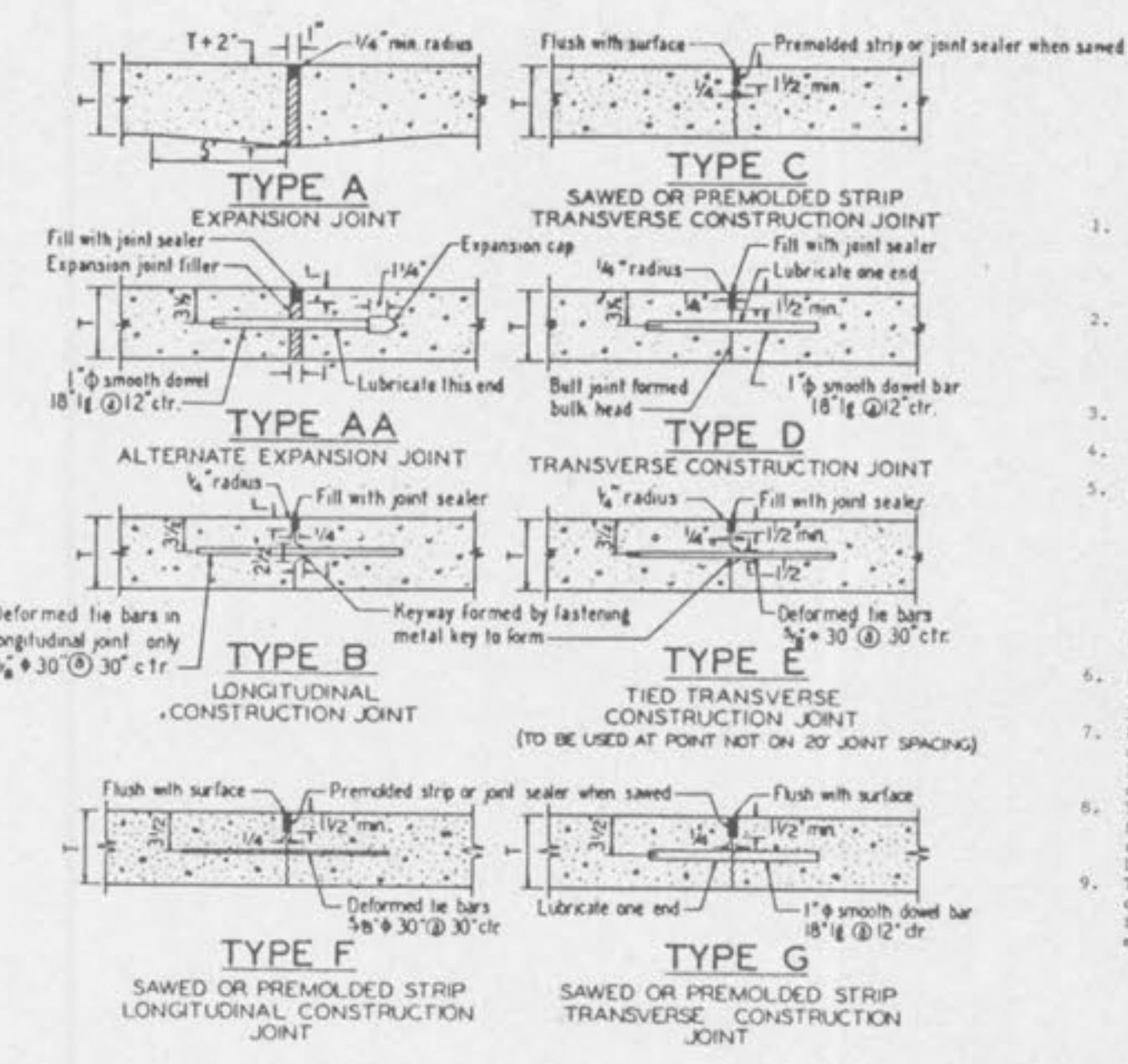
R-5050 Series Types SF, CF and FF Automatic Drainage Gates



Size and dimension details.

Catalog Number		Dimensions in inches									
Type SF	Type CF	Type FF	Diameter	A	B	C	D	E	F	N	S
R-5050-SF6	R-5050-CF6	R-5050-FF6	6	7	11	12	11	7	4	4	1/4
R-5050-SF8	R-5050-CF8	R-5050-FF8	8	9 1/4	11	13	11	7 1/4	4 1/4	4	1/4
R-5050-SF10	R-5050-CF10	R-5050-FF10	10	11 1/4	13 1/4	15 1/4	13 1/4	7 1/4	4 1/4	4	1/4
R-5050-SF12	R-5050-CF12	R-5050-FF12	12	13 1/4	15 1/4	17 1/4	15 1/4	7 1/4	4 1/4	4	1/4
R-5050-SF15	R-5050-CF15	R-5050-FF15	15	16 1/4	18 1/4	20 1/4	18 1/4	7 1/4	4 1/4	4	1/4
R-5050-SF18	R-5050-CF18	R-5050-FF18	18	19 1/4	21 1/4	23 1/4	21 1/4	7 1/4	4 1/4	4	1/4
R-5050-SF20	R-5050-CF20	R-5050-FF20	20	22 1/4	24 1/4	26 1/4	24 1/4	7 1/4	4 1/4	4	1/4
R-5050-SF21	R-5050-CF21	R-5050-FF21	21	22 1/4	25 1/4	27 1/4	25 1/4	7 1/4	4 1/4	4	1/4
R-5050-SF24	R-5050-CF24	R-5050-FF24	24	25 1/4	28 1/4	30 1/4	28 1/4	7 1/4	4 1/4	4	1/4
R-5050-SF27	R-5050-CF27	R-5050-FF27	27	28 1/4	31 1/4	33 1/4	31 1/4	7 1/4	4 1/4	4	1/4
R-5050-SF30	R-5050-CF30	R-5050-FF30	30	31 1/4	34 1/4	36 1/4	34 1/4	7 1/4	4 1/4	4	1/4
R-5050-SF36	R-5050-CF36	R-5050-FF36	36	37 1/4	41 1/4	43 1/4	41 1/4	7 1/4	4 1/4	4	1/4
R-5050-SF42	R-5050-CF42	R-5050-FF42	42	43 1/4	47 1/4	49 1/4	47 1/4	7 1/4	4 1/4	4	1/4
R-5050-SF48	R-5050-CF48	R-5050-FF48	48	49 1/4	54 1/4	56 1/4	54 1/4	7 1/4	4 1/4	4	1/4

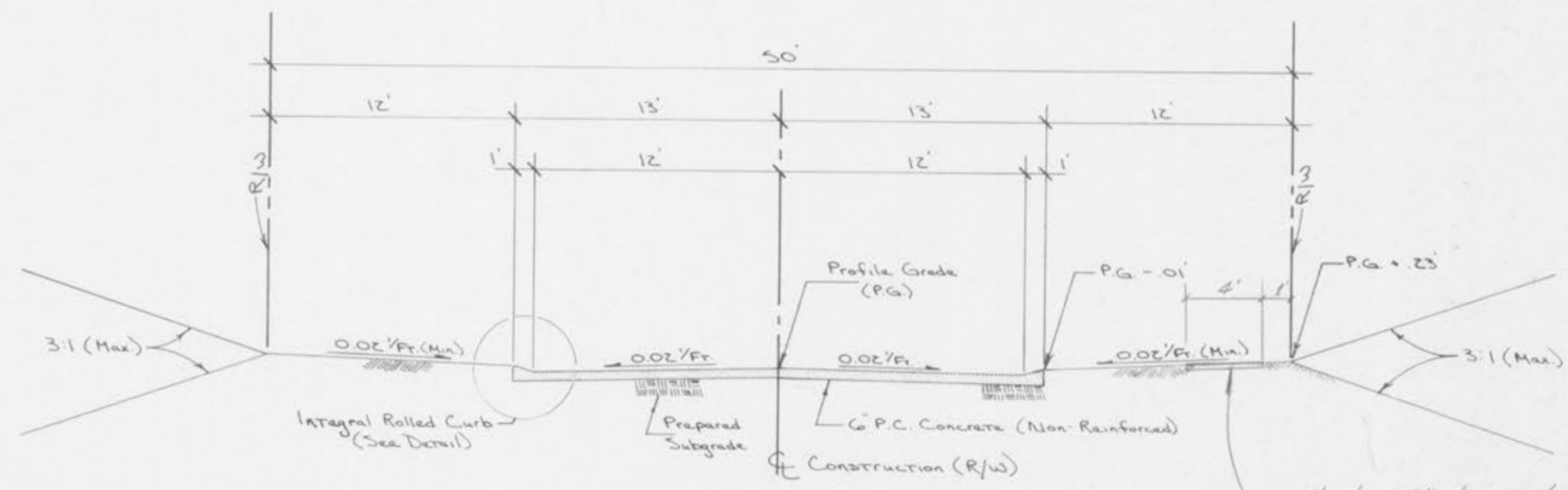
\*\*"N" and "S" Dimensions apply to Type SF and CF gates only - the Type FF Flange faced and drilled A.W.W.A. class 125 standard.



- GENERAL NOTES
- All catch basins shall be separate from the pavement and curb by expansion joint material extending completely through curb and slab. Manhole castings within the pavement limits shall be based as shown in the "Sever Construction Details".
  - When a joint falls within 5 ft. of or contacts basin, manhole, or other structures, shorten one or more panels either side of opening to permit joint to fall on sound structures and at or between corners of rectangular structures.
  - Driveway configurations are shown in the "Entrance Construction Details".
  - Construction joint and dowel bars may be omitted when curb is poured integral with pavement.
  - Minimum thickness for pavement is:

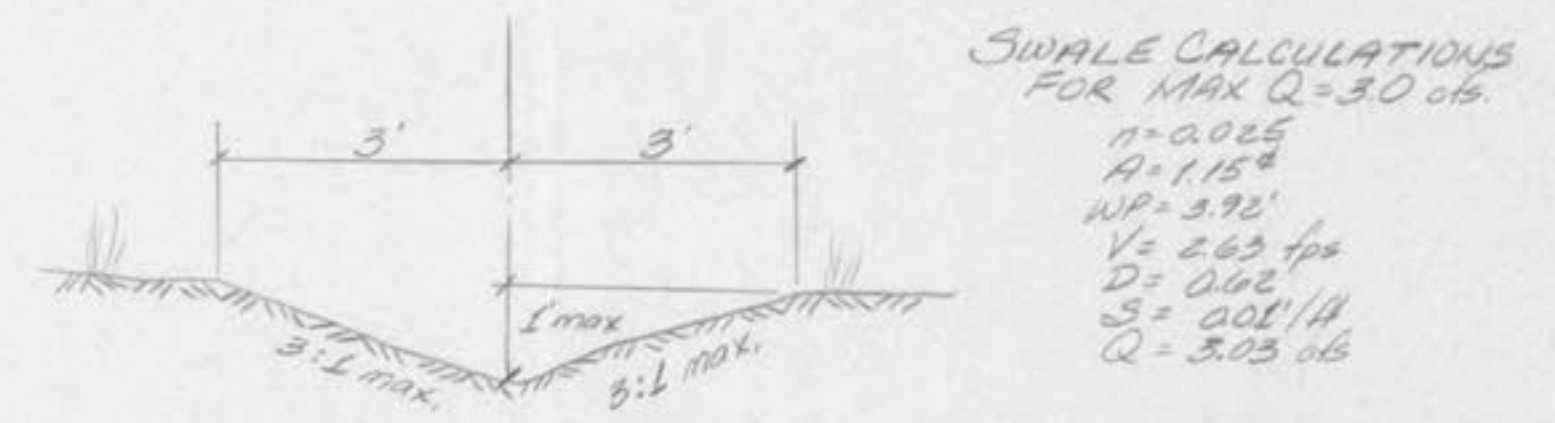
CONCRETE (T)	CONCRETE (T)
Local or Minor Streets	6"
Major or Industrial Streets	7"
Arterial or Industrial Streets	8"

- Base material under pavement will be made with 4 inches of Rolled Stone Base.
- For minor rural or urban and minor subdivision pavements (6" thick concrete), 1/2" diameter deformed tie bars 30" ctr. shall be used for Type B longitudinal joints. Refer to Exhibit 13A for joint and bar requirements for different street classifications. Note that width and location of each paved portion of the pavement may change the type and location of joint required.
- Transverse or longitudinal construction joints in slip formed pavement may be made with grooves or tools. If such device has been approved in advance by the St. Louis County Department of Highways & Traffic.
- The locations of the Type B and Type F longitudinal construction joints in above sections may be interchanged for the different widths of construction if approval is obtained.



TYPICAL SECTION  
(26' W. P.C. CONC. PVMT.)

- \* Provide 4' wide x 4' thick concrete side walk, see flat plan for sidewalk locations \*
- \* Provide 4' wide x 4' thick concrete side walk, see flat plan for sidewalk locations \*
- \* Provide pre-molded expansion joints @ 24' o.c.
- \* Provide pre-molded expansion joints @ 24' o.c.



TYPICAL GRASS SWALE  
Not to Scale