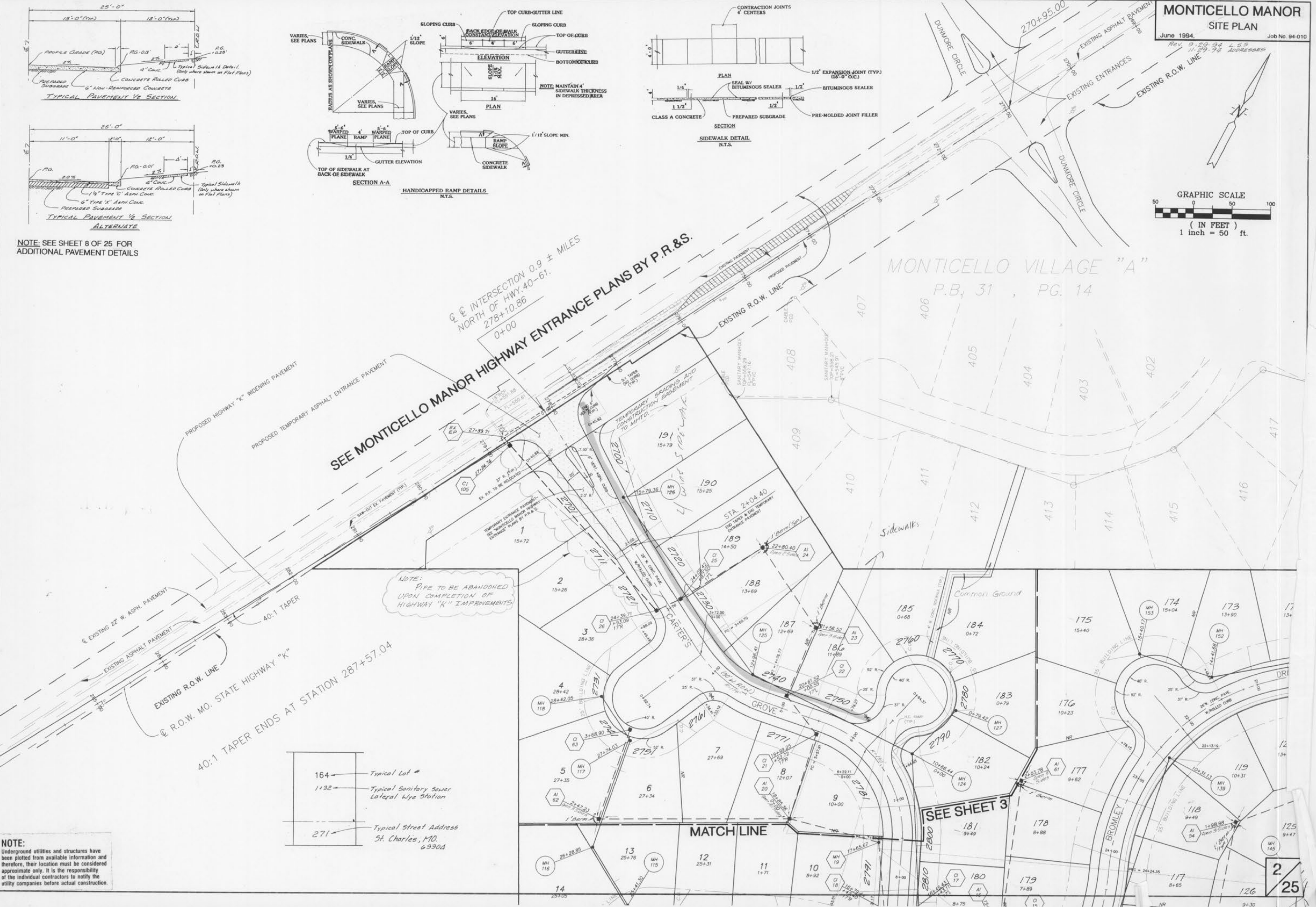


NOTE: SEE SHEET 8 OF 25 FOR ADDITIONAL PAVEMENT DETAILS



164	Typical Lot #
1+32	Typical Sanitary Sewer Lateral Wye Station
271	Typical Street Address St. Charles, MD 63304

NOTE:
 Underground utilities and structures have been plotted from available information and therefore, their location must be considered approximate only. It is the responsibility of the individual contractors to notify the utility companies before actual construction.