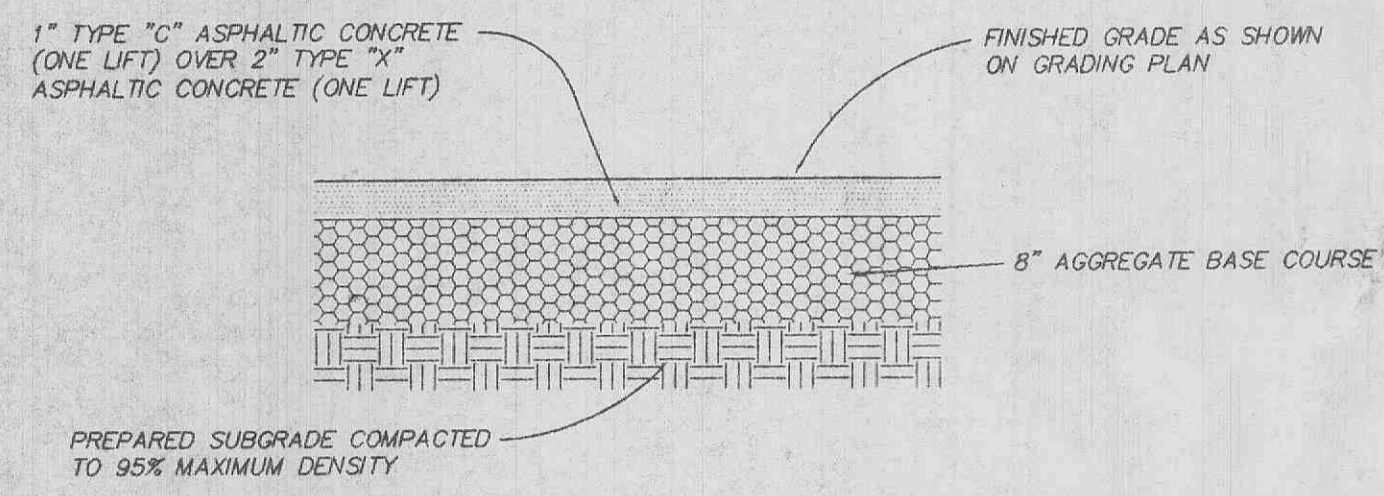
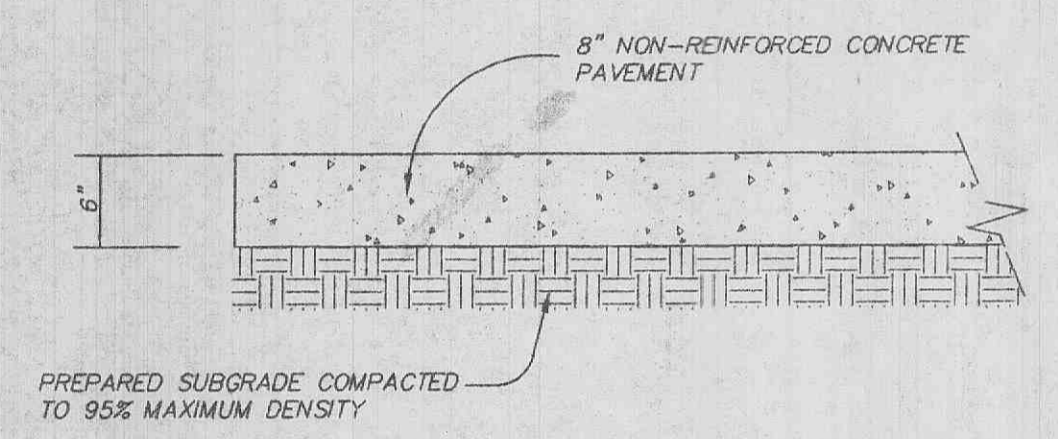


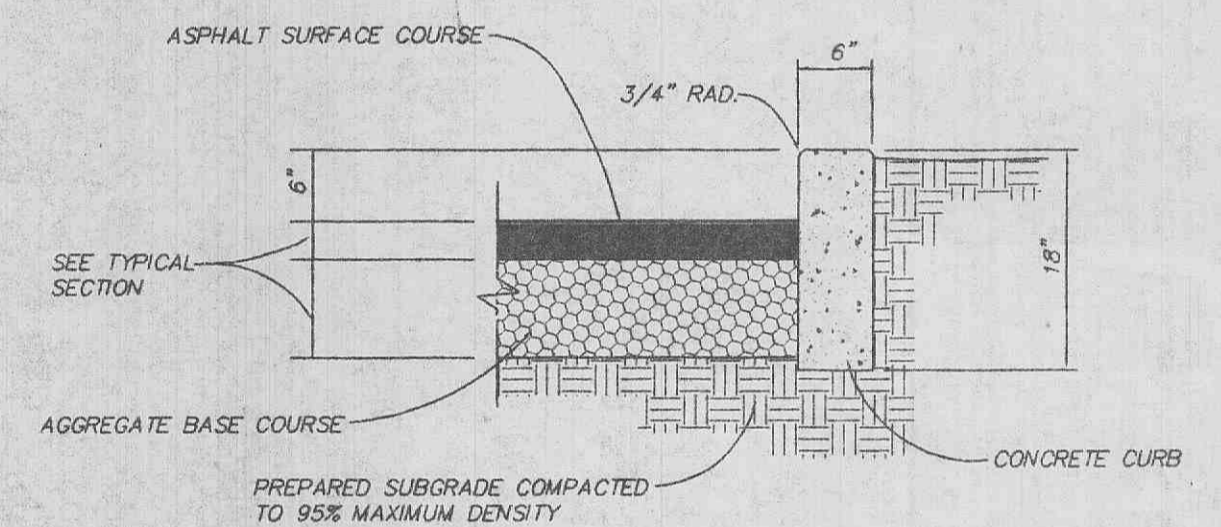
TYPICAL PARKING PAVEMENT SECTION



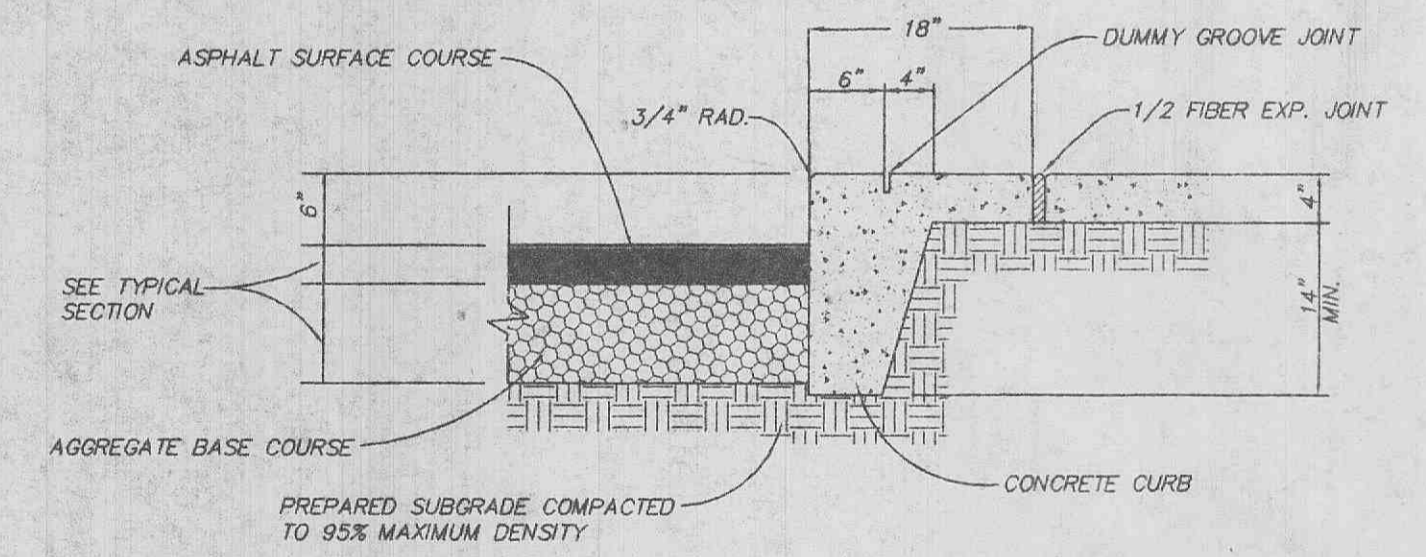
TYPICAL TRUCK PAVEMENT SECTION



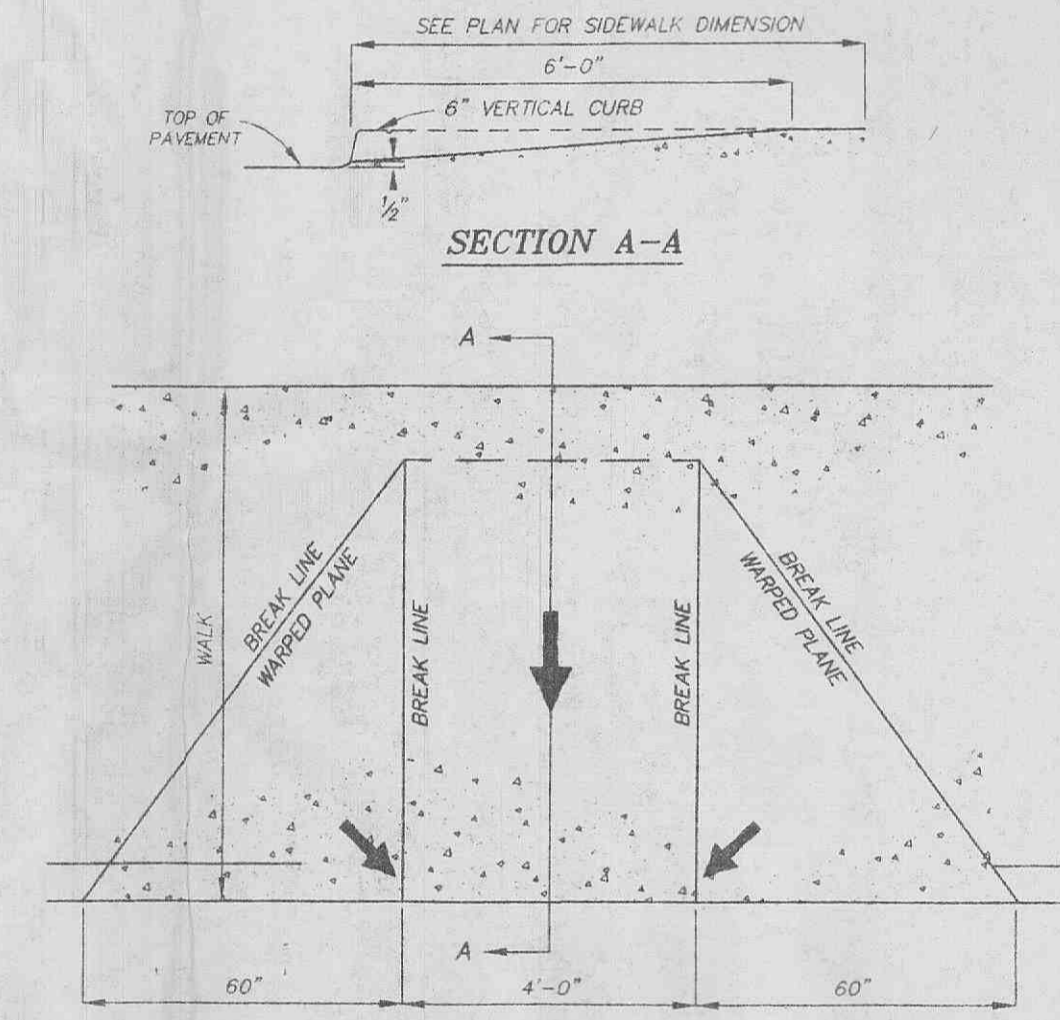
CONCRETE PAVEMENT DETAIL



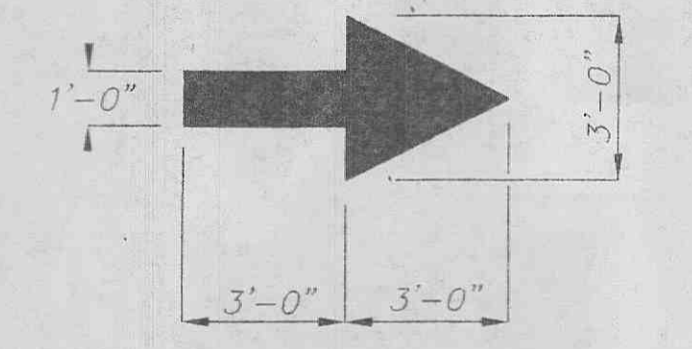
6" VERTICAL CONCRETE CURB



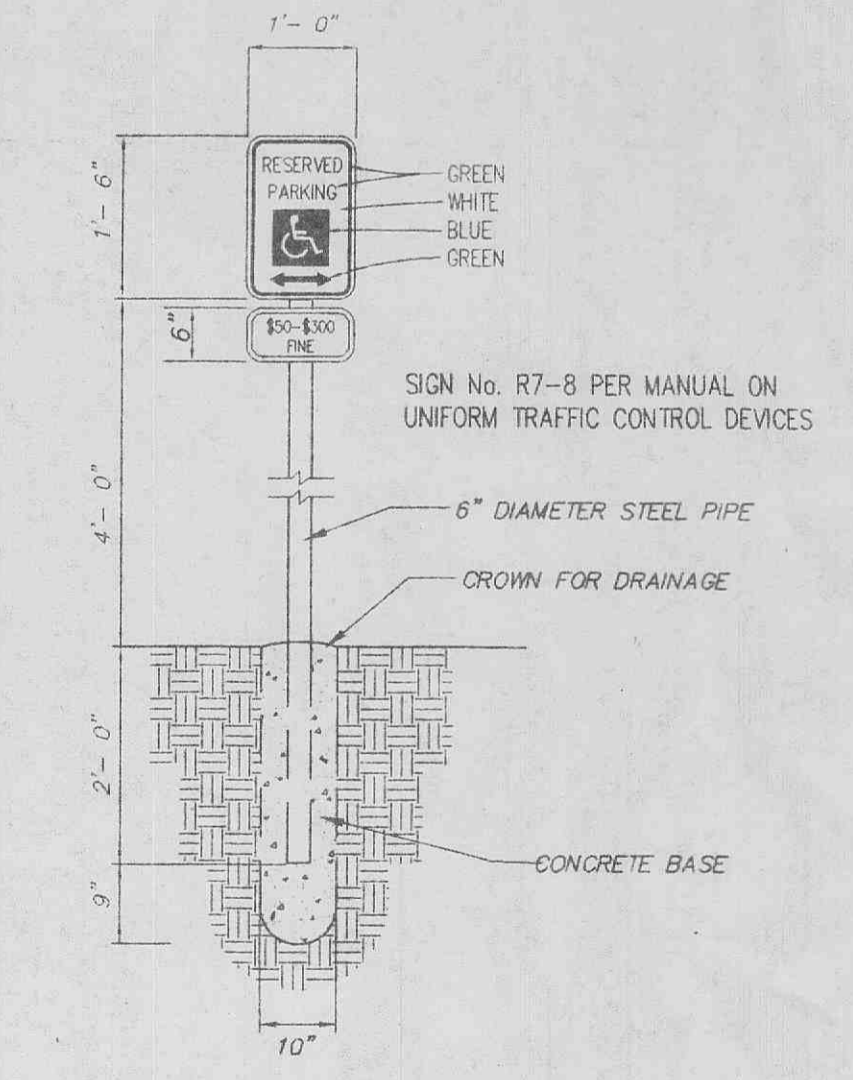
6" CONCRETE CURB WITH SIDEWALK @ PUBLIC WALKS ALONG O'FALLON RD.



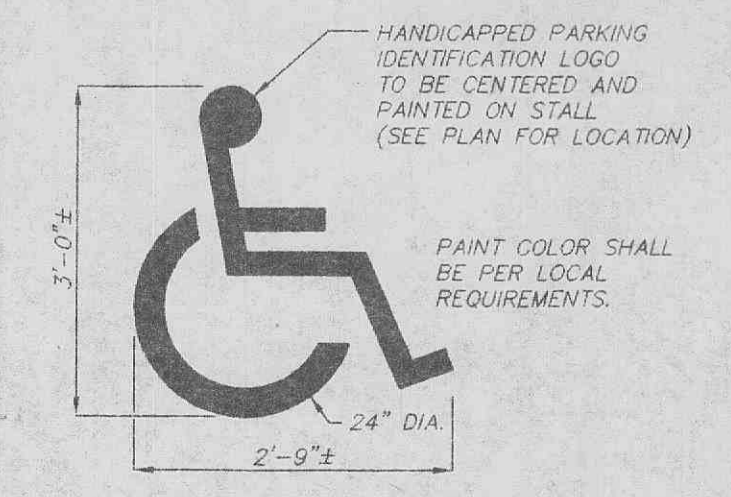
STRAIGHT CURB HANDICAPPED RAMP DETAIL



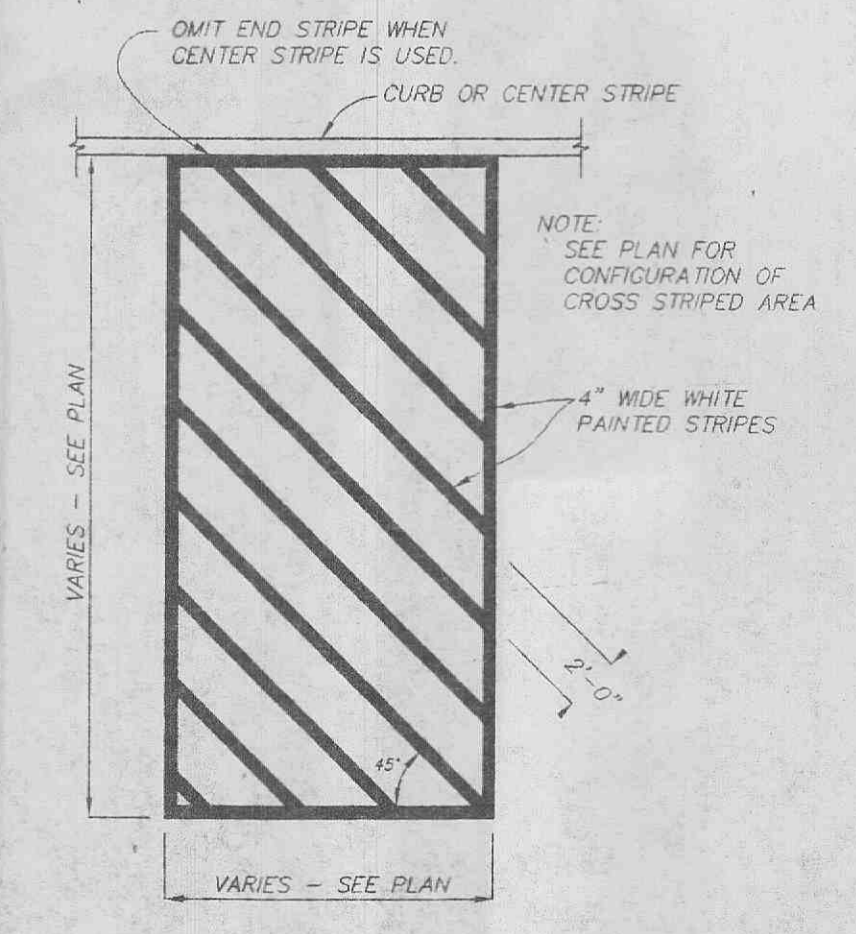
PAINTED DIRECTIONAL ARROW N.T.S.



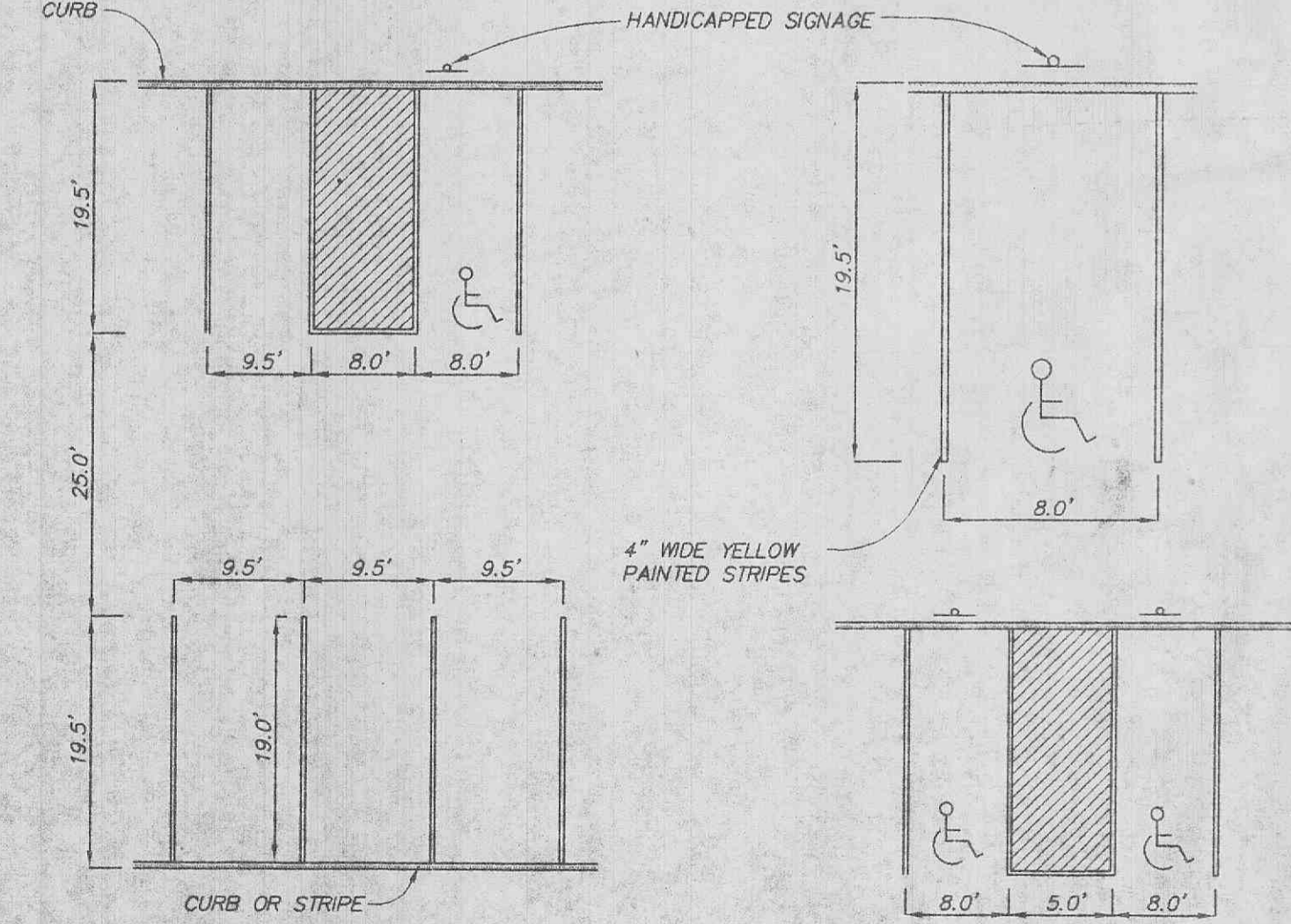
HANDICAPPED SIGN DETAIL



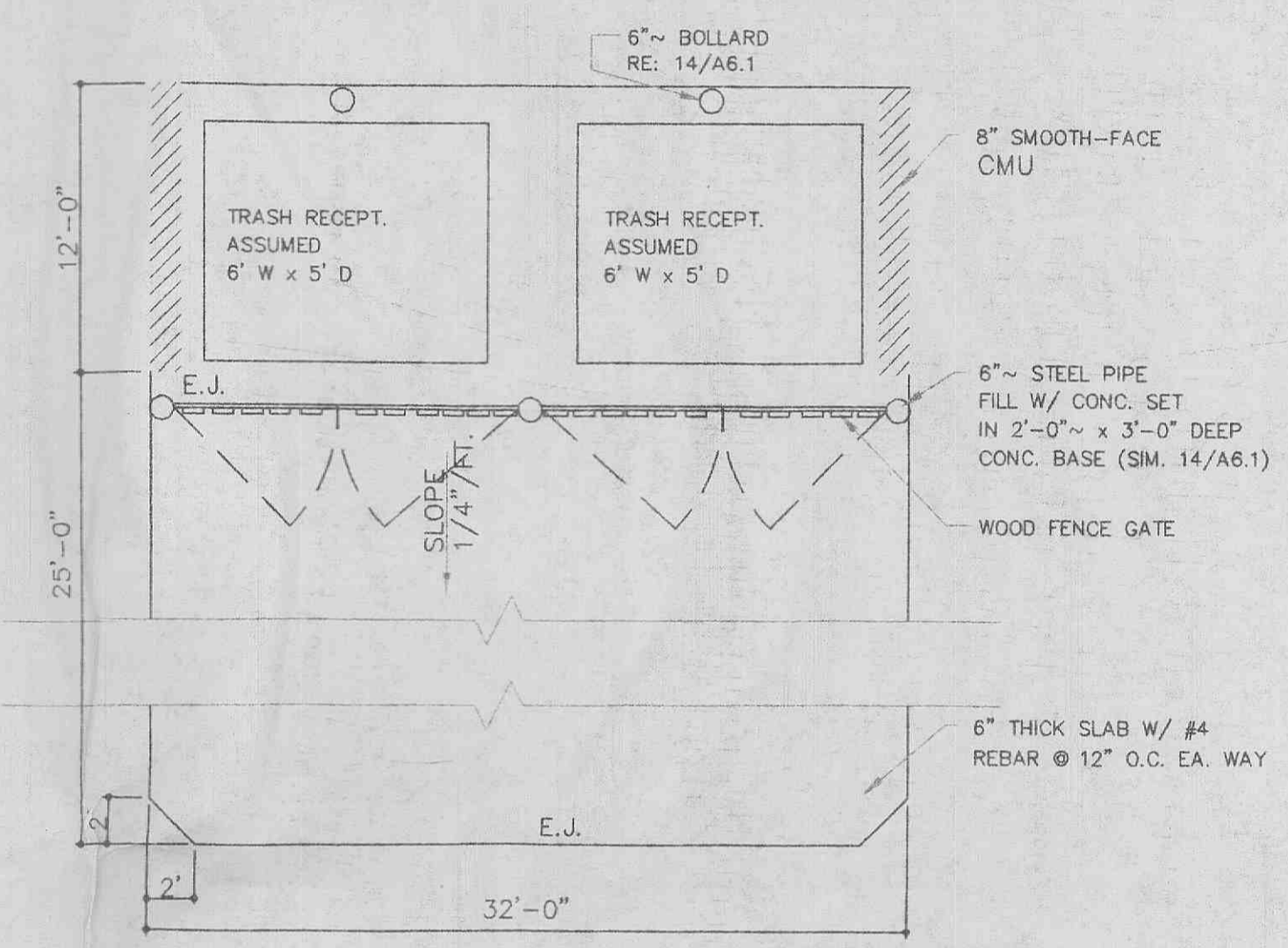
HANDICAPPED PARKING MARKING N.T.S.



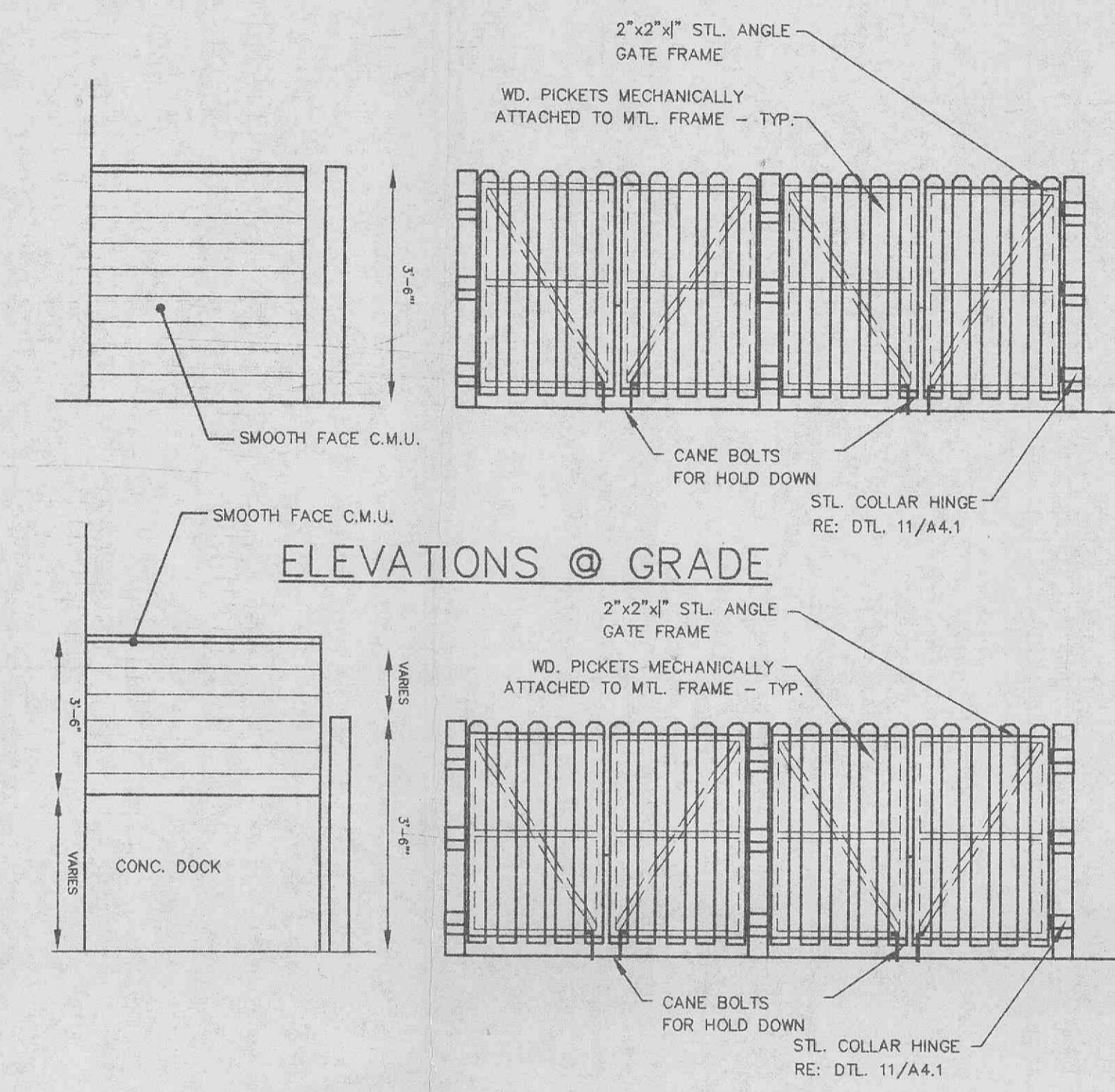
CROSS STRIPING DETAIL N.T.S.



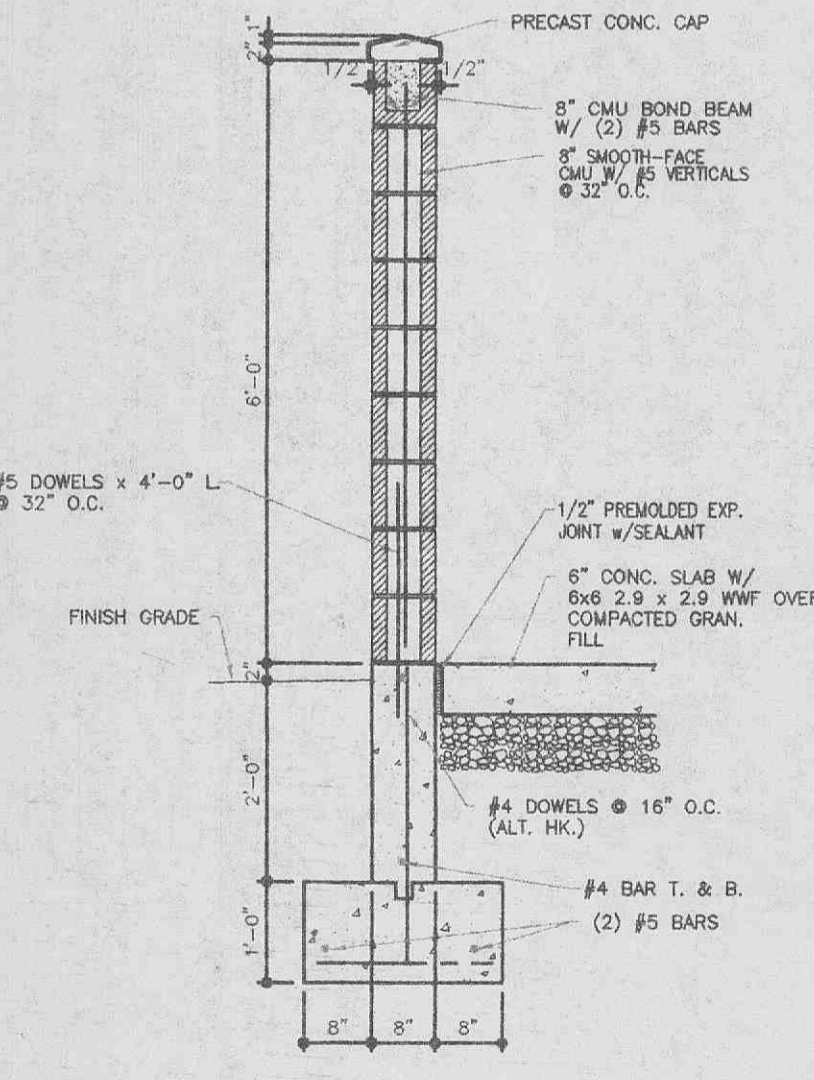
TYPICAL PARKING DIMENSIONS



TRASH ENCLOSURE PLAN



TRASH ENCLOSURE ELEVATIONS



TRASH ENCLOSURE SECTIONS

- DUCKETT CREEK SANITARY DISTRICT CONSTRUCTION NOTES
- Underground utilities have plotted from available information and therefore, location shall be considered approximate only. The verification of the location of all underground utilities, either shown or not shown on these plans, shall be the responsibility of the contractor and shall be located prior to any grading or construction of improvements.
 - Gas, water and other underground utilities shall not conflict with the depth or horizontal location of existing or proposed sanitary and storm sewers, including house laterals.
 - All existing site improvement disturbed, damaged or destroyed shall be repaired or replaced to closely match preconstruction conditions.
 - All fill including places under proposed storm and sanitary sewer lines and areas including trench backfills within and off the road right-of-way shall be compacted to 95 percent of maximum density as determined by the Modified AASHTO T-180 Compaction Test (ASTM D1557). All test shall be verified by a Soil Engineer concurrent with grading and backfilling operations. The compacted fill shall be free of rutting and shall be non-yielding and non-pumping during proof rolling and compaction.
 - The contractor shall prevent all storm, surface water, mud and construction debris from entering the existing sanitary sewer system.
 - All sanitary sewer flowlines and tops built without elevations furnished by the engineer will be the responsibility of the sewer contractor.
 - Easements shall be provided for all sanitary sewers, storm sewers and all utilities on the record plat.
 - All construction and materials shall conform to the current construction standards of the Duckett Creek Sanitary District.
 - The Duckett Creek Sanitary District shall be notified of most 48 hours prior to construction for coordination and inspection.
 - All sanitary sewer building connections have been designed so that the minimum vertical distance from the low point of the basement to the flowline of a sanitary sewer at the corresponding building connection is not less than the diameter of the pipe plus the vertical distance of 2-1/2 feet.
 - All interior sanitary sewer manholes shall be water-tight on the exterior in accordance Missouri Dept. of Natural Resources specification 10 CSR-8.120(7)(E).
 - All PVC sanitary sewer pipe is to be SDR-35 or equal with "clean" 1/2 inch granular stone bedding uniformly graded. The bedding shall extend from 4 inches below the pipe to springline of pipe. Immediate backfill over pipe shall consist of same size "clean" or "minus" stone from springline of pipe to 6 inches above the top of pipe.
 - All sanitary and storm sewer trench backfills shall be water-jetted. Granular backfill will be used under pavement areas.
 - All pipe shall have positive drainage through manholes. No flat base structure are allowed.
 - All creek crossings shall be grouted rip-rap as directed by District inspectors. (All grout shall be high slump ready-mix concrete).
 - Brick shall not be used on sanitary sewer manholes.

PICKETT RAY & SILVER
CIVIL ENGINEERS
PLANNERS
LAND SURVEYORS
333 Mid Rivers Mall Drive
St. Peters, MO 63376
Phone (636) 397-1211
Fax (636) 397-1104

MONTICELLO COMMERCIAL
PHASE II
O'FALLON, MISSOURI
Prepared For:
MONTICELLO PLAZA LLC
401 N. LINDBERGH BLVD.
SUITE 230
O'FALLON, MO 63341
(314) 932-3088

REVISIONS	DATE	PER DUCKETT CREEK SEWER DISTRICT/DEVELOPER
NO.	9-4-01	

ENGINEERS AUTHENTICATION
The responsibility for professional engineering liability on this project is hereby limited to the set of plans authenticated by the seal, signature, and date hereunder attached. Responsibility is disclaimed for all other engineering plans involved in this project and specifically excludes revisions after this date unless reauthenticated.
PICKETT, RAY & SILVER, INC.

DRAWN	DATE
D.L.S.	07-02-01
CHECKED	DATE
D.W.B.	07-02-01
PROJECT #	85064.00KA.04C
TASK #	1 FIELD
BOOK	X

CONSTRUCTION DETAILS
SHEET 8 OF 11
© Copyright 2001 by Pickett, Ray & Silver, Inc.

I:\server\p\projects\85064.dwg\85064a.dwg Thu Mar 24 15:45:00 2002 D. STBZ
 HP Design/Build Logo - Pickett, Ray & Silver, Inc. 401 E. 3rd St. - St. Louis, MO 63102