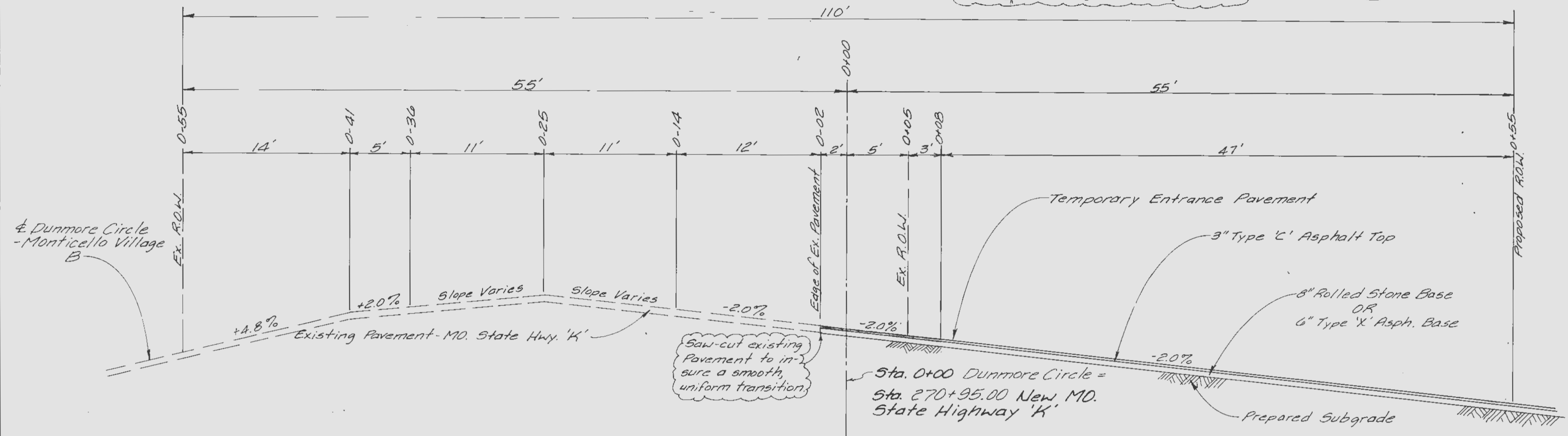
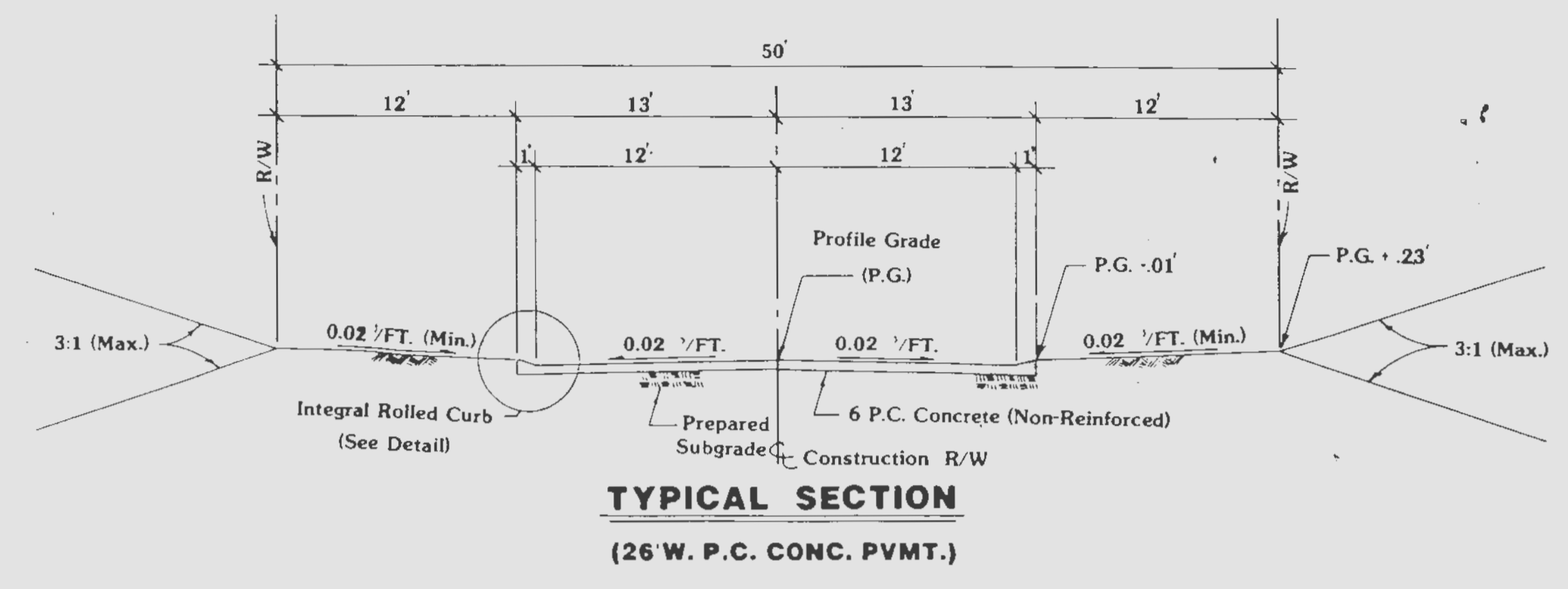


NOTE:
 Upon completion of Highway "K" roadway improvements, developer's contractor will remove any existing striping on Route "K". Said removal will be coordinated with the Missouri State Highway Department so that developer's/contractor can stripe new lines on the same day that developer's/contractor removes them.

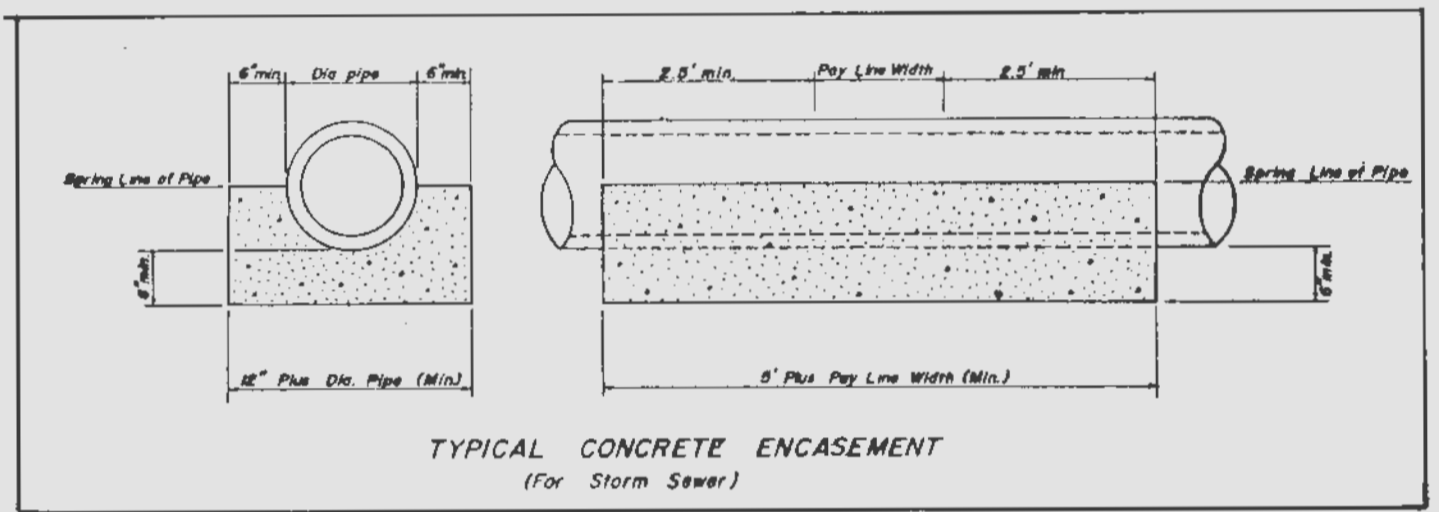
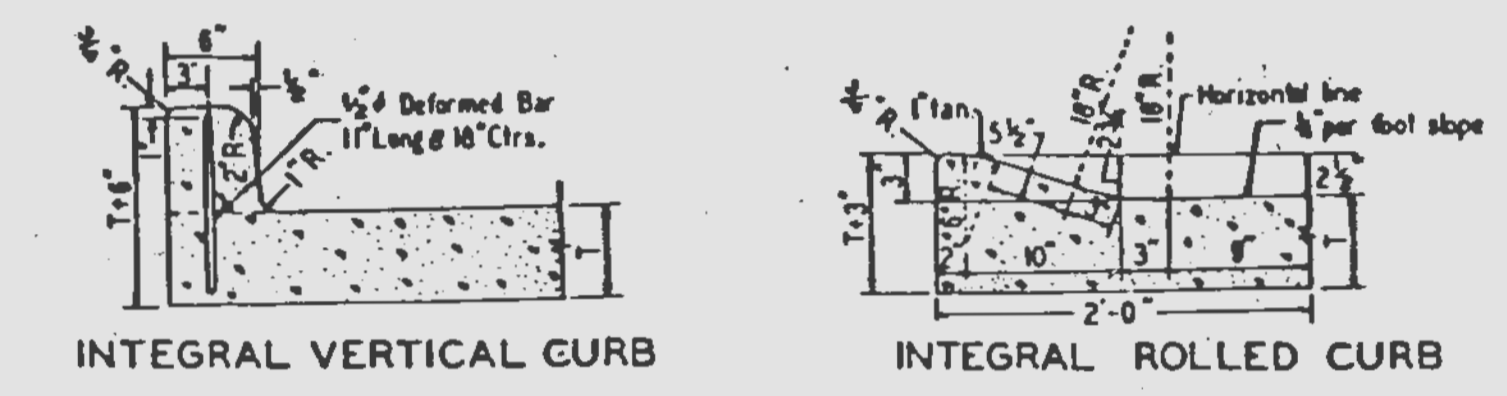
NOTE:
 All entrances shall meet the specifications and installation requirements of the City of O'Fallon and the Missouri Highway and Transportation Department.



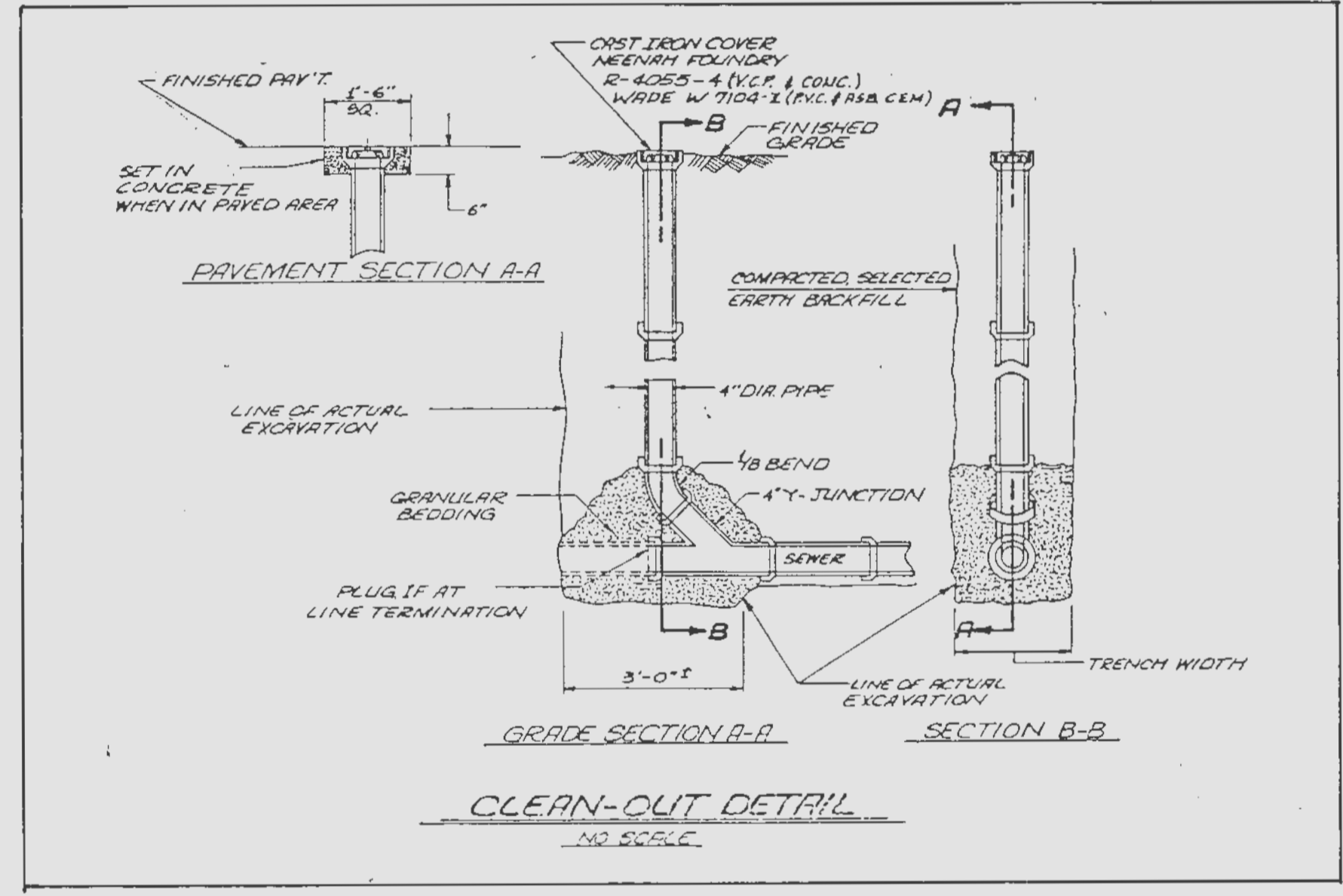
MISSOURI STATE HIGHWAY 'K' CROSS-SECTION ALONG CENTERLINE OF DUNMORE CIRCLE



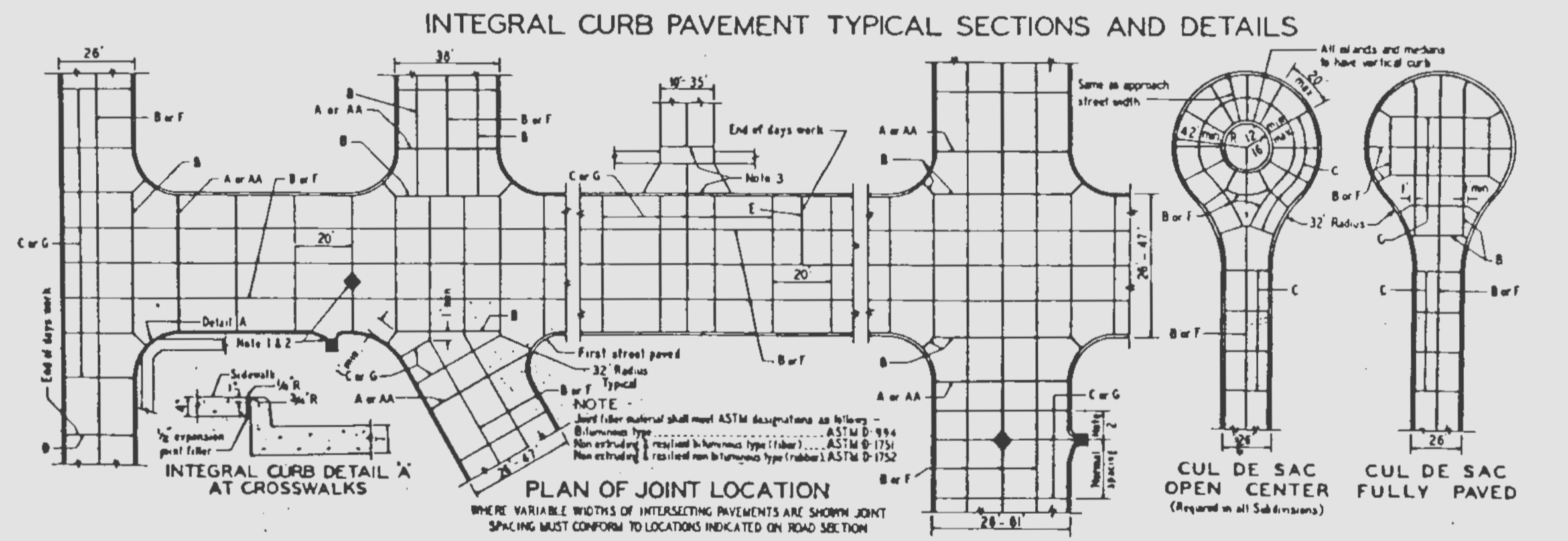
TYPICAL SECTION
 (26' W. P.C. CONC. PVMT.)



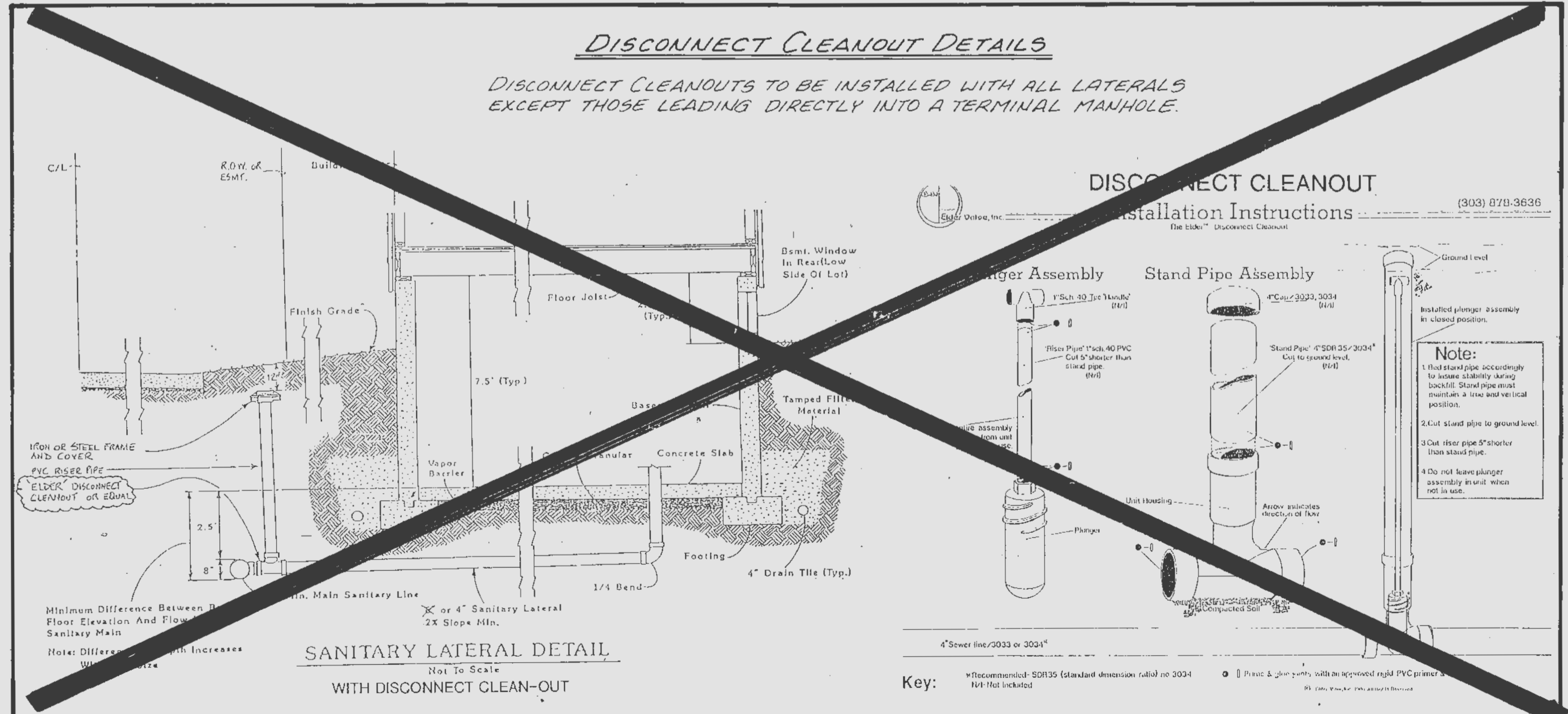
TYPICAL CONCRETE ENCASMENT
 (For Storm Sewer)



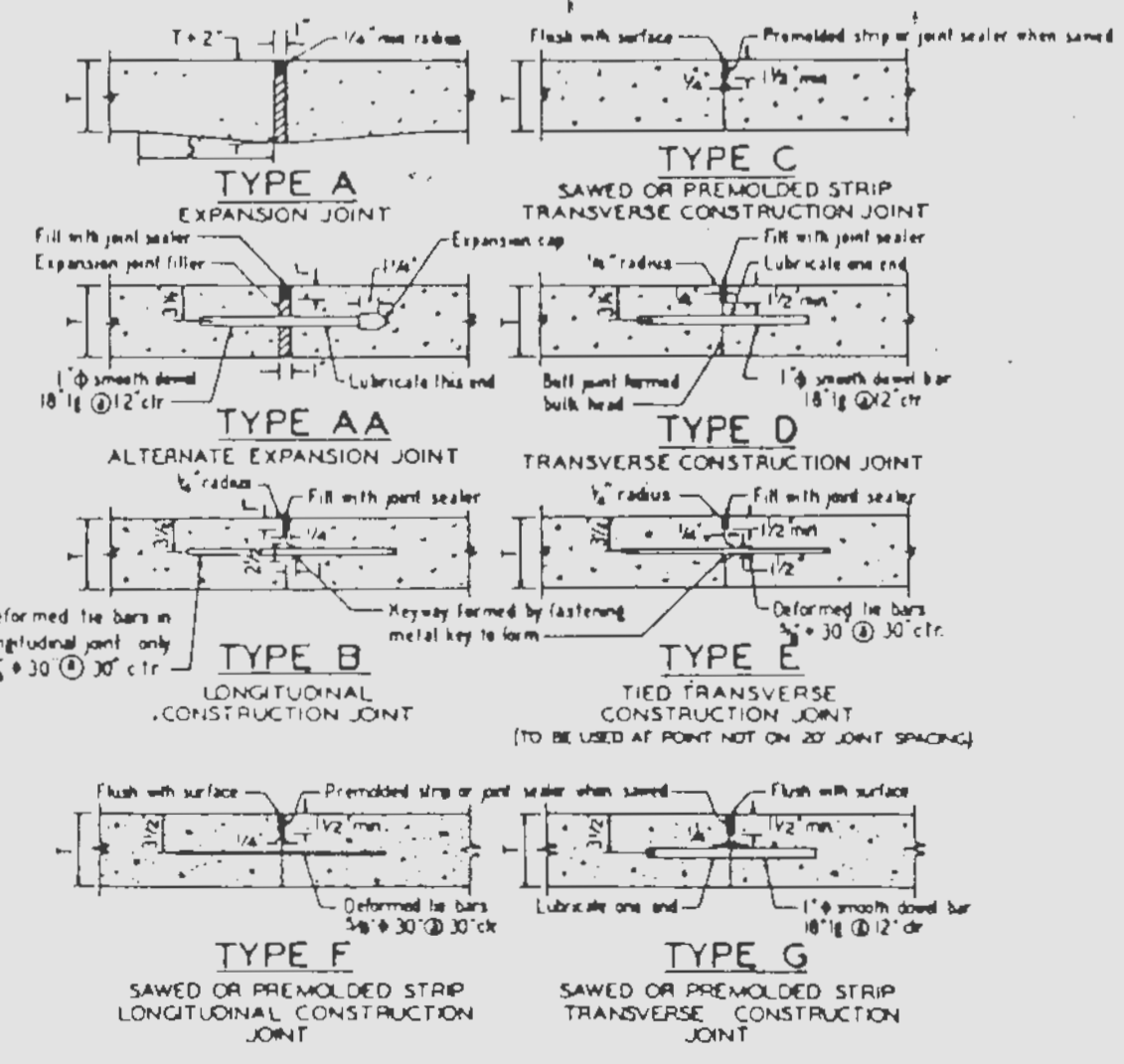
CLEAN-OUT DETAIL
 NO SCALE



PLAN OF JOINT LOCATION
 WHERE VARIABLE WIDTHS OF INTERSECTING PAVEMENTS ARE SHOWN JOINT SPACING MUST CONFORM TO LOCATIONS INDICATED ON ROAD SECTION



SANITARY LATERAL DETAIL
 WITH DISCONNECT CLEAN-OUT



- GENERAL NOTES
- All catch basins shall be separate from the pavement and curb by expansion joint material extending completely through curb and slab. Manhole castings within the pavement limits shall be boxed as shown in the "Sewer Construction Details".
 - When a joint falls within 5 feet of or contacts basin, manholes, or other structures, shorpen one or more panels either side of opening to permit joint to fall on round structures and at or between corners of rectangular structures.
 - Driveway configurations are shown in the "Entrance Construction Details".
 - Construction joint and dowel bars may be omitted when curb is poured integral with pavement.
 - Minimum Thickness for Pavement is:

Local or Minor Streets	CONCRETE (T)	6"
Major or Industrial Streets		7"
Arterial or Industrial Streets		8"
 - Base material under pavement will be made with 4 inches of Rolled Stone Base.
 - For minor rural or urban and minor subdivision pavements (6" thick concrete), 1/2" x 6" deformed tie bars 30" long at 30" c/cr. shall be used for Type B longitudinal joints.
 - Refer to Exhibit 13A for joint and bar requirements for different street classifications. Note that width and location of each poured portion of the pavement may change the type and location of joint required.
 - Transverse or longitudinal construction joints in slip formed pavement may be made with groover or tool, if such device has been approved in advance by the St. Louis County Department of Highways and Traffic.
 - The locations of the Type B and Type F longitudinal construction joints in above sections may be interchanged for the different widths of construction if approval is obtained.