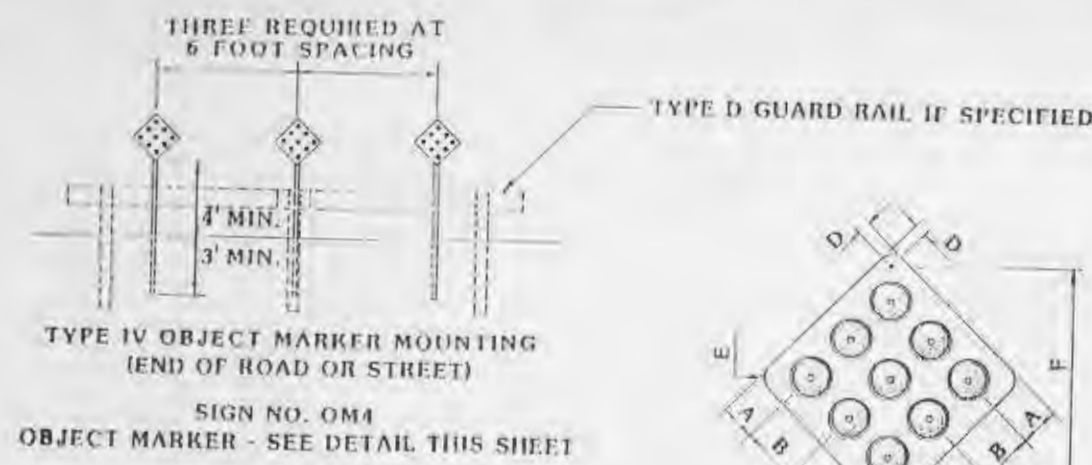


NOTE:
Underground utilities and structures have been plotted from available information and therefore, their location must be considered approximate only. It is the responsibility of the individual contractors to notify the utility companies before actual construction.

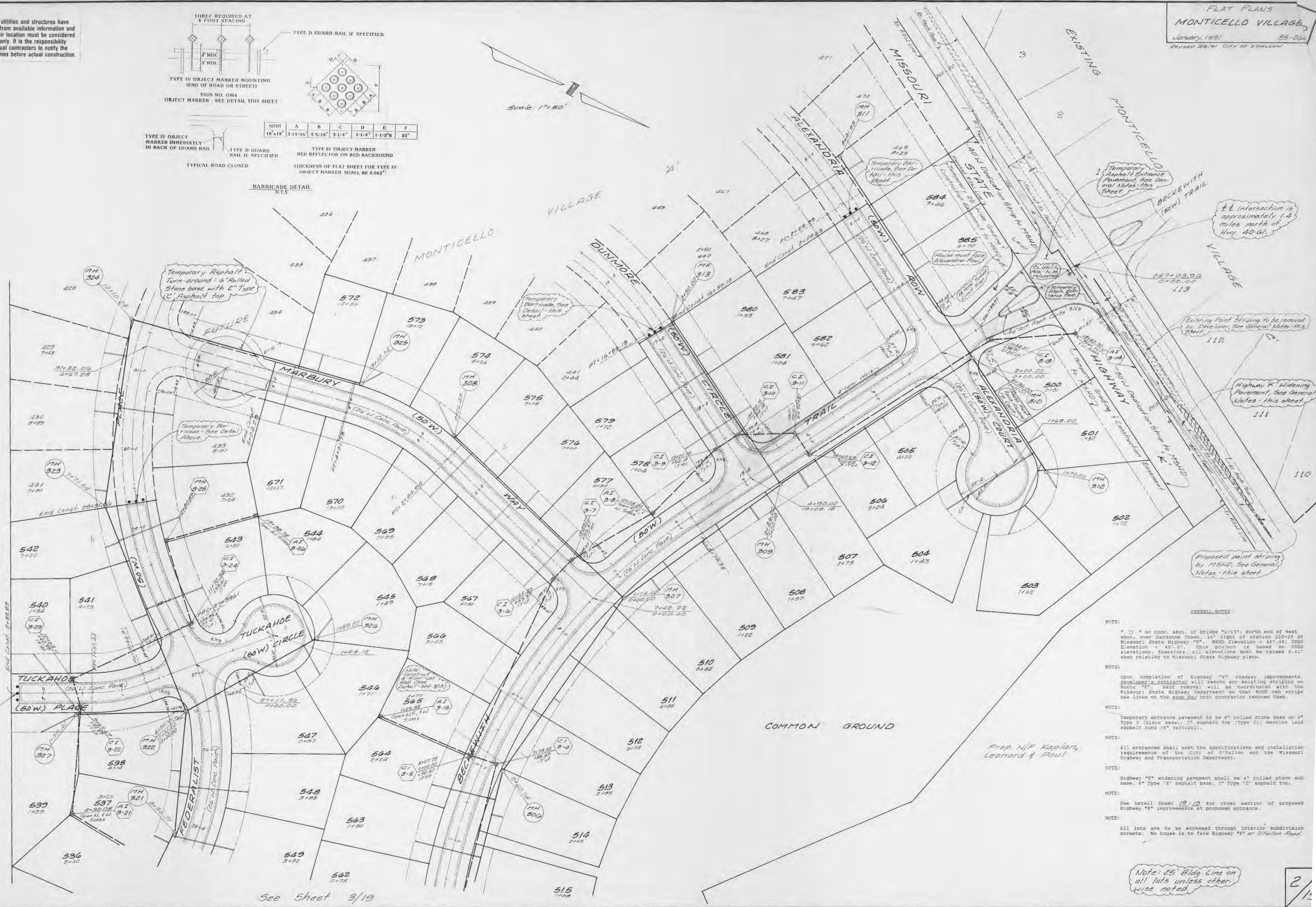


SIGN	A	B	C	D	E	F
18" x 18"	3-11/16"	5-5/16"	3-1/4"	1-1/4"	1-1/2"	22"

THICKNESS OF FLAT SHEET FOR TYPE IV OBJECT MARKER SHALL BE 0.063"

BARRICADE DETAIL
N.T.S.

Scale: 1"=50'



GENERAL NOTES

NOTE: "I" on Conc. abut. of bridge "I-15" North end of West abut. over Barrens Creek, 1/2" right of station 220+25 of Missouri State Highway "M". MSHD Elevation = 487.48; USGS Elevation = 487.0'. This project is based on USGS elevations; therefore, all elevations must be raised 0.4' when relating to Missouri State Highway plans.

NOTE: Upon completion of Highway "K" roadway improvements, developer's contractor will remove any existing striping on Route "K". Said removal will be coordinated with the Missouri State Highway Department so that MSHD can stripe new lines on the same day that contractor removes them.

NOTE: Temporary entrance pavement to be 2" rolled stone base or 6" Type X (Black Base), 1" asphalt top (Type C), machine laid asphalt curb (6" vertical).

NOTE: All entrances shall meet the specifications and installation requirements of the City of O'Fallon and the Missouri Highway and Transportation Department.

NOTE: Highway "K" widening pavement shall be 4" rolled stone sub base, 6" Type 'X' asphalt base, 1" Type 'C' asphalt top.

NOTE: See Detail Sheet 19/19 for cross section of proposed Highway "K" improvements at proposed entrances.

NOTE: All lots are to be accessed through interior subdivision streets. No house is to face Highway "K" or O'Fallon Road.

Note: 25' Blag. Line on all lots unless otherwise noted.

See Sheet 3/19