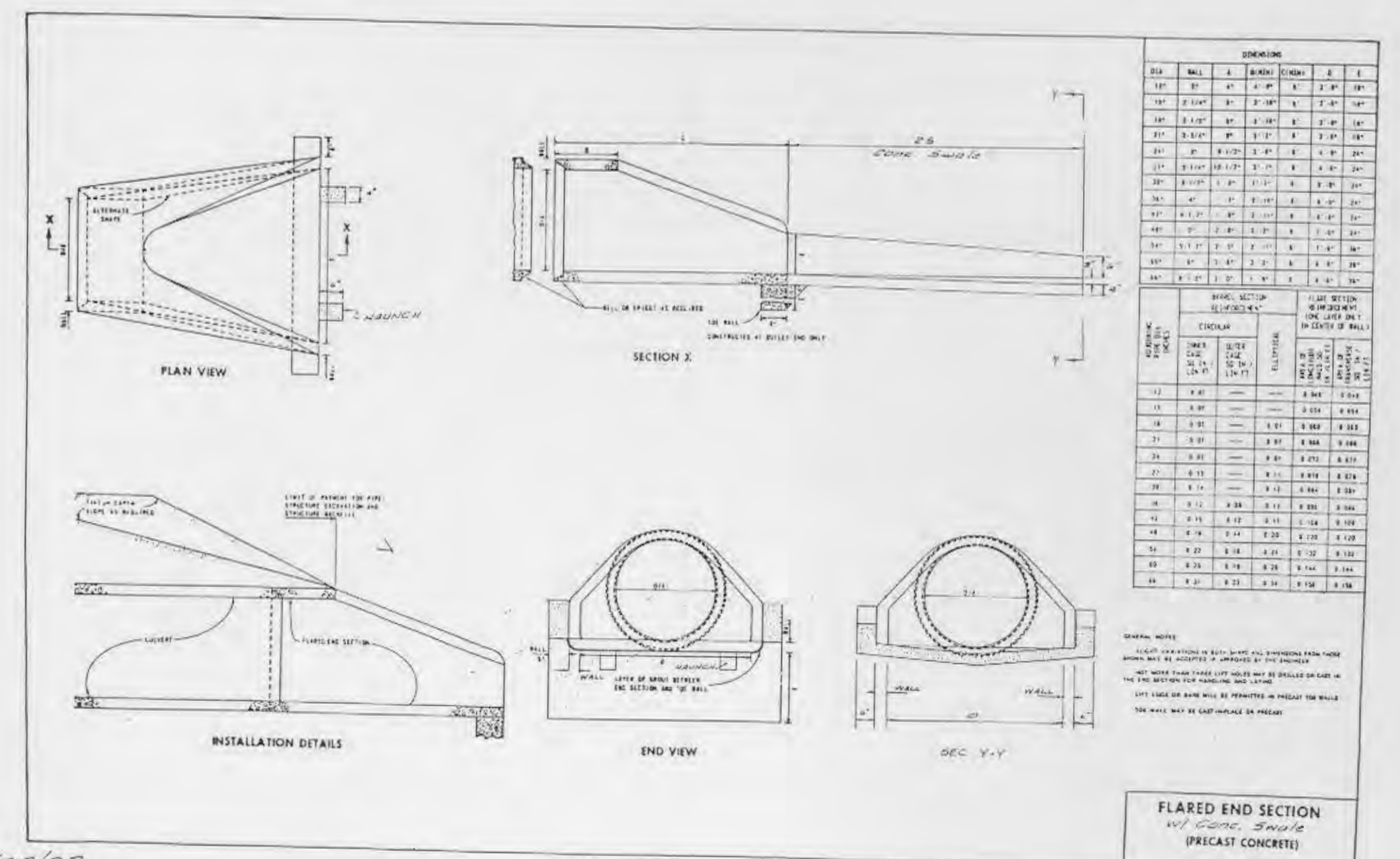
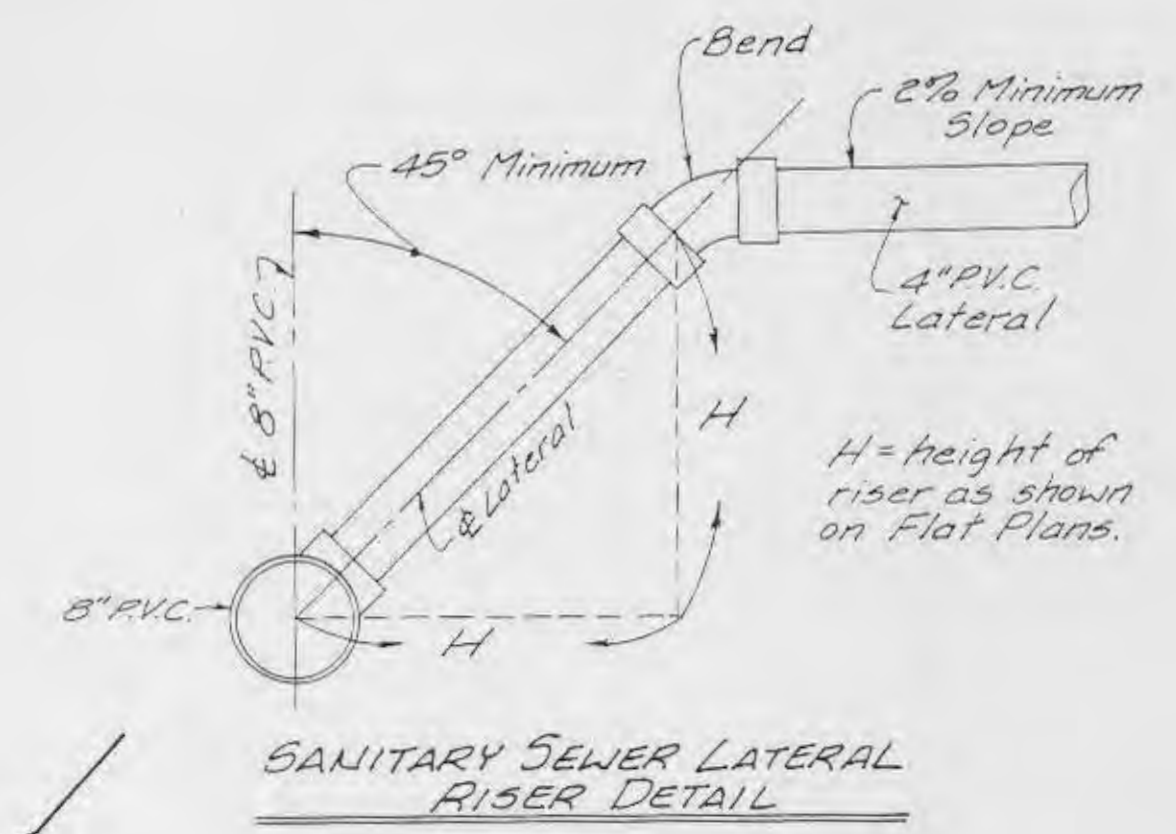
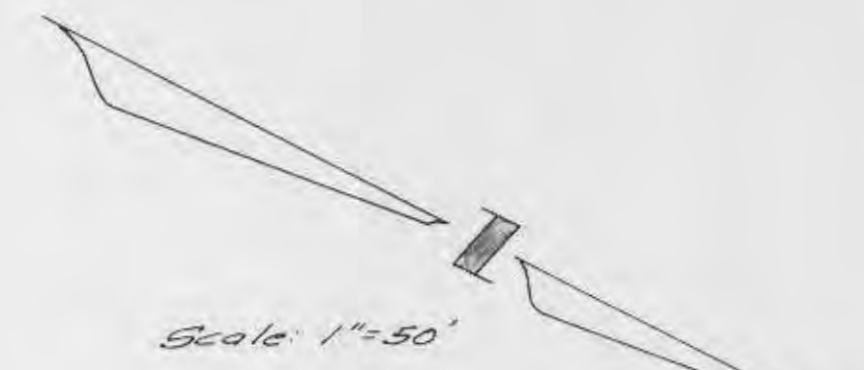


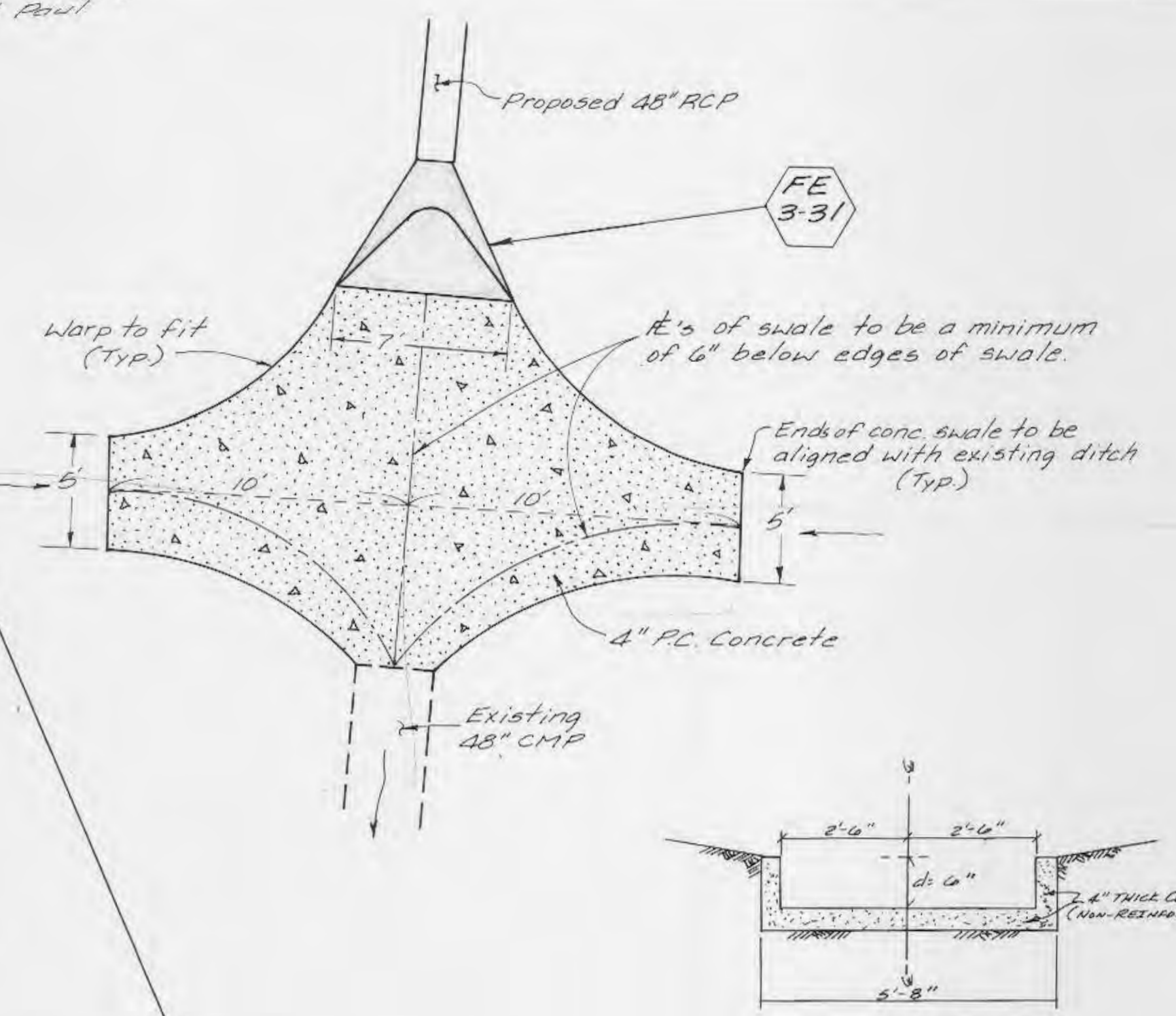
NOTE:
Underground utilities and structures have been plotted from available information and therefore, their location must be considered approximate only. It is the responsibility of the individual contractors to notify the utility companies before actual construction.

See Sheet 2/19

FLAT PLAN
MONTICELLO VILLAGE D
January, 1991 85-064 U
REVISED 8/18/91 CITY OF ST. LOUIS
REV. 3/25/91, Off-site Sewers



Prop. N/F Kadlan, Leonard & Paul



CONCRETE SWALE DETAIL
N.T.S.

See Monticello-Village D Off-site Sanitary Sewers Plans by P.R.S.

Note: Lots 523 thru 528 are to be accessed from interior subd streets. No house is to front O'Fallon Road.

Note: 25' Bldg. Line on all lots unless otherwise noted.