

Table with 3 columns: NO, DATE, DESCRIPTION. Lists 4 issuance dates from 08/25/21 to 11/22/21.

O'FALLON, MO MOTOMART NEW CONVENIENCE CENTER AND CARWASH FKG OIL COMPANY

GRADING PLAN 'A'

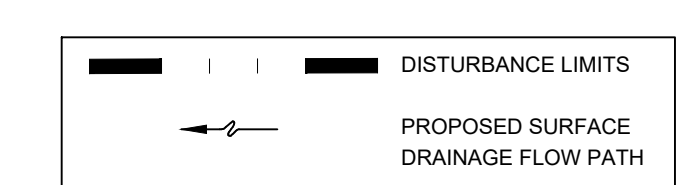
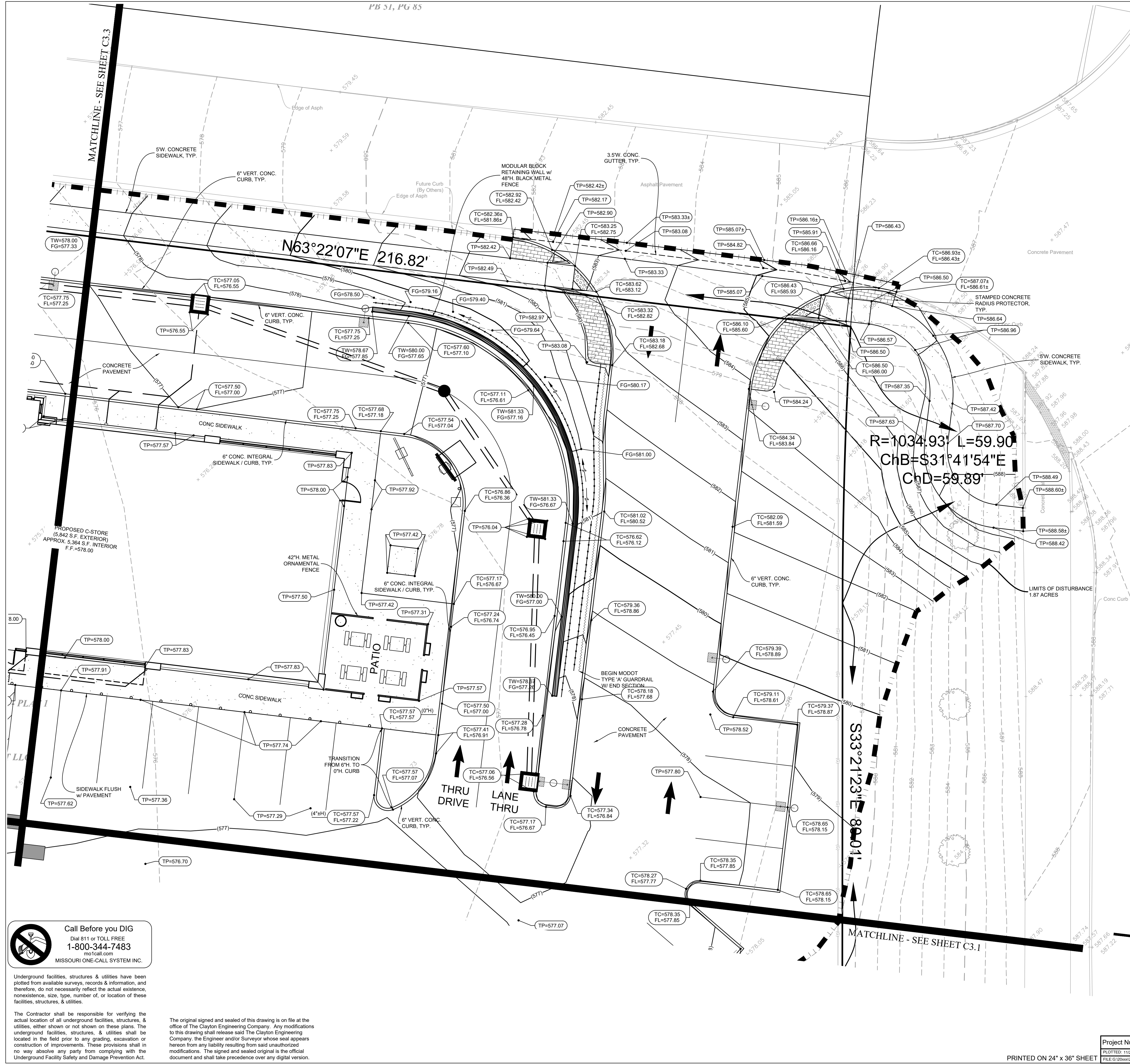
SHEET NO.

C3.0

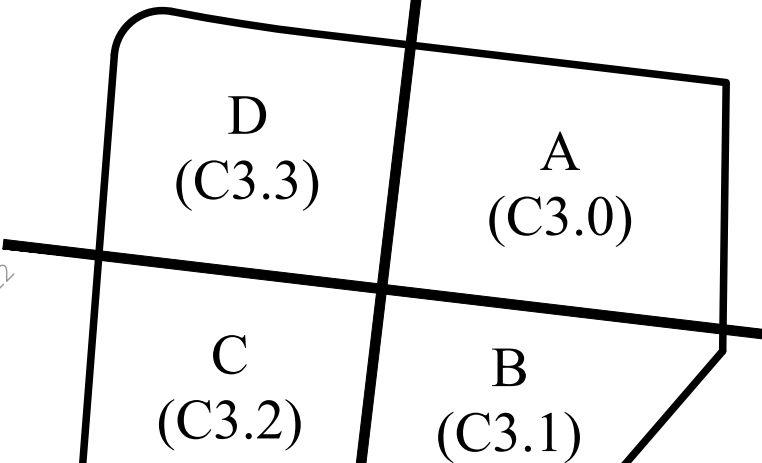
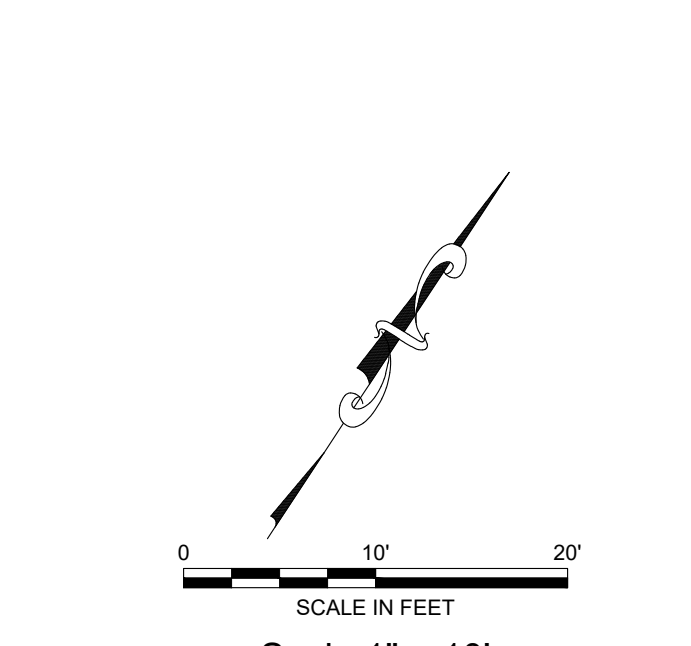
JOB NO. 21-31331.01

© 2021 FGM Architects Inc.

- ADDITIONAL GRADING NOTES: 1. UPON COMPLETION OF CONSTRUCTION OR COMPACTION, ALL DISTURBED AREAS SHALL EITHER BE PAVED, LANDSCAPED, OR SOODED FOR THESE PROJECT IMPROVEMENTS...



LANDSCAPING MAINTENANCE NOTE: THE CONTRACTOR SHALL MAINTAIN ALL SODDING & PLANTINGS FOR A MINIMUM OF 30 DAYS AFTER INSTALLATION.



GRADING PLAN SHEET INDEX MAP

Table with 2 columns: Project Number (20350), Design (EJS/RFK), Date (10/22/21), Drawn (EJS/RFK), File (10-21-2103).

Logo for the clayton engineering company, inc. and contact information for ENGINEERS - SURVEYORS - PLANNERS.

Call Before you DIG Dial 811 or TOLL FREE 1-800-344-7483

The original signed and sealed of this drawing is on file at the office of The Clayton Engineering Company.