

- ADDITIONAL UTILITY NOTES:**
- LIMITS OF DISTURBANCE: THE CONTRACTOR SHALL STAY WITHIN THE LIMITS OF DISTURBANCE AS SHOWN ON THE PLANS AND MINIMIZE DISTURBANCE WITHIN THE WORK AREA WHEREVER POSSIBLE.
 - ALL DISTURBED AREAS SHALL EITHER BE PAVED, LANDSCAPED, OR SODED FOR THESE PROJECT IMPROVEMENTS. SEEDING WILL NOT BE PERMITTED ON THIS DEVELOPMENT.
 - STORM SEWERS ARE PROPOSED WITH THESE IMPROVEMENTS. SEWER DESIGN IS PROVIDED IN ACCORDANCE WITH CITY RULES & REGULATIONS THIS PROJECT, AND ACCOUNTS FOR THE IMPROVEMENTS SHOWN ON THESE PLANS.
 - IT IS THE CONTRACTOR'S RESPONSIBILITY TO OBTAIN ANY CITY OR MODOT PERMITS REQUIRED TO WORK ALONG THE ROADWAYS.
 - EXISTING UTILITIES LINES (PIPING) EXPOSED DURING TRENCHING FOR NEW UTILITY INSTALLATIONS, SHALL BE SUPPORTED ACCORDING TO THE RESPECTIVE UTILITY COMPANY'S STANDARDS AND SPECIFICATIONS. ANY DAMAGE TO THESE EXISTING UTILITIES SHALL BE THE CONTRACTOR'S RESPONSIBILITY TO REPAIR TO THE RESPECTIVE UTILITY COMPANY'S SATISFACTION.
 - STORMWATER RUNOFF WILL FOLLOW SIMILAR DRAINAGE PATTERNS TO THE EXISTING STORMWATER COLLECTION & DETENTION SYSTEM. A STORMWATER DETENTION BASIN WITH THE BUILDING PLANS, WHICH SHALL BE INSTALLED WITH THE STREETS OF CALEDONIA DEVELOPMENT PROJECT. THIS PARCEL'S (LOT 6) IMPROVEMENTS AND ITS LAND DISTURBANCE IS INCLUDED IN THE DESIGN OF THOSE STORMWATER BMPs.
 - USE CONTINUOUS REINFORCED FOOTING OR GRADE BEAM & PIERS FOR NEW RETAINING WALLS OVER NEW SANITARY AND STORM SEWER PIPES.
 - TRENCH DRAIN AT CARWASH EXIT SHALL BE ACO KLASSIKDRAIN K200 WITH SLOPED CHANNEL & DRAIN/LK LOAD CLASS C SLOTTED IRON GRATE (OR APPROVED EQUAL WITH MIN. LOAD CLASS C GRATE).
 - THE NEW BUILDING DOWNSPOUTS SHALL ALL BE PIPED. REFER TO THE ARCHITECTURAL PLANS FOR DOWNSPOUT PIPE BOOTS AND SIZES, CONNECTION DETAILS, AND LOCATION WITH THE BUILDING PLANS, WHICH SHALL TAKE PRECEDENCE. THE CONTRACTOR SHALL NOTIFY THE ENGINEER OF ANY CONFLICTS FOUND.
 - LIGHT POLES TO BE 16-FOOT PLUS A 2-FOOT CONCRETE BASE. SEE LIGHTING PLAN.
 - ALL HVAC AND MECHANICAL UNITS ON SITE SHALL BE PROPERLY SCREENED AS REQUIRED BY CITY CODE 400.27B. ROOF TOP UNITS SHALL BE SCREENED BY A PARAPET WALL AT LEAST AS HIGH AS TALLEST MOUNTED UNIT ON ROOF. REFER TO THE ARCHITECTURAL PLANS FOR MORE INFORMATION.
 - REFER TO ELECTRICAL PLANS FOR UNDERGROUND ELECTRIC SERVICES AND TRANSFORMER LOCATION. THESE ITEMS, IF SHOWN ON CIVIL PLANS, ARE APPROXIMATE AND FOR REFERENCE ONLY. THE CONTRACTOR TO COORDINATE WITH CUIVRE RIVER ELECTRIC COOP FOR FINAL SERVICE LINE ROUTES. CONTRACTOR IS RESPONSIBLE TO INSTALL ELECTRICAL CONDUIT WITH THE AID OF CONSTRUCTION STAKING FOR ELECTRIC SERVICE LINES FOR CUIVRE RIVER ELECTRIC COOP TO ENSURE THE LINE IS WITHIN EASEMENTS PROVIDED.
 - ANY GAS SERVICE, WATER SERVICE, ETC. BORINGS, OR EXCAVATIONS IN THE STATE RIGHT-OF-WAY SHALL REQUIRE A MODOT UTILITY PERMIT. THE CONTRACTOR SHALL CONTACT MODOT SENIOR TRAFFIC SPECIALIST, PAUL GRAHAM AT (314) 565-6714, AND COORDINATE WITH THE RESPECTIVE UTILITY COMPANIES. IT IS SUGGESTED THIS PROCESS SHOULD BE STARTED IMMEDIATELY AFTER THE PROJECT IS AWARDED.
 - THIS PROJECT DOES NOT PROPOSE ANY IRRIGATION OR LANDSCAPE AREAS.
 - RESTAURANT HAS A 1,500 GALLON GREASE INTERCEPTOR LOCATED EXTERIOR OF THE BUILDING. SEE THIS PLAN AND DETAIL ON C6.3.
 - WATER SERVICE NOTE: 2" METER AND LINE - THE PUBLIC WATER SUPPLY DISTRICT NO. 2 WILL SUPPLY ONLY THE WATER METER, GASKETS AND BOLTS AND NUTS NEEDED TO COMPLETE THE SERVICE INSTALLATION. THE CONTRACTOR IS RESPONSIBLE FOR PROVIDING THE TAPPING SADDLE AS WELL AS EXCAVATION, TRENCHING, BACKFILLING AND INSTALLATION. IT SHALL BE WITNESSED AND INSPECTED BY THE WATER DISTRICT. PROVIDE MINIMUM OF ONE (1) WEEK NOTICE TO WATER DISTRICT. 2" LINES CAN BE TYPE K COPPER ON DISCHARGE SIDE OF THE METER. ALL INSTALLATION TO FOLLOW PUBLIC WATER SUPPLY DISTRICT NO. 2 STANDARDS AND SPECIFICATIONS.
 - ALL WATER AND FIRE FITTINGS SHOWN ARE FOR HORIZONTAL CHANGES IN DIRECTION. THE CONTRACTOR SHALL DETERMINE BEST LOCATIONS FOR FITTINGS TO ACHIEVE VERTICAL CHANGES IN ALIGNMENT WHILE MAINTAINING PROPER INSTALLATION DEPTH AND OBTAINING PROPER CLEARANCES FROM UTILITY CROSSINGS. ADDITION OF AIR RELEASE VALVES MAY BE NECESSARY IF ISOLATED HIGH POINTS IN WATER/FIRE LINES ARE CREATED WHERE AIR MAY BE TRAPPED.
 - ALL WATER AND FIRE LINE FITTINGS TO BE THRUST BLOCKED PER PUBLIC WATER SUPPLY DISTRICT NO. 2 STANDARDS AND SPECIFICATIONS.
 - MINIMUM VERTICAL CLEARANCE BETWEEN WATER LINES AND SANITARY/STORM SEWERS SHALL BE 18-INCHES. CONTRACTOR TO DIP NEW WATER LINES UNDER SANITARY/STORM SEWER TO OBTAIN CLEARANCE. AS AN ALTERNATIVE OPTION AND WITH PRIOR APPROVAL FROM THE ENGINEER, CONCRETE ENCASE WATER LINES WHEN CLEARANCE IS NOT POSSIBLE. THE WATER DISTRICT REQUIRES A MINIMUM OF 42" OF COVER AND A MAXIMUM OF 72" OF COVER OVER ITS WATER MAINS. ADDITIONALLY ALL EXISTING VALVES MUST REMAIN OR BE BROUGHT TO GRADE.
 - ANY EXISTING LIGHT POLES, UTILITY POLES, OVERHEAD ELECTRIC & TELEPHONE WIRES, AND/OR UNDERGROUND ELECTRIC MARKED TO BE REMOVED AND/OR RELOCATED ARE TO BE DONE SO BY THE CONTRACTOR. THE CONTRACTOR MUST COORDINATE WITH CUIVRE RIVER ELECTRIC COOP, AT&T, AND ANY ADDITIONAL COMPANIES WHO HAVE WIRES ON THESE POLES. PRIOR TO ANY WORK IN THIS AREA, REFER TO THE ELECTRICAL PLANS FOR NEW LOCATIONS AND FURTHER INFORMATION.
 - THE CONTRACTOR IS RESPONSIBLE FOR ALL UTILITY COMPANY COORDINATION AND SCHEDULING.
 - EXISTING UTILITIES (UNDERGROUND ELECTRIC, GAS, AND WATER) ARE SHOWN APPROXIMATELY. THESE LOCATIONS WERE PLOTTED FROM MISSOURI ONE-CALL SYSTEM MARKINGS AT THE TIME OF THE SURVEY FIELD WORK OR AS PROVIDED BY UTILITY MAPS AND DESIGN PLANS BY OTHERS.
 - ALL ITEMS LABELED AS "FUTURE... (BY OTHERS)" ARE ITEMS TO BE CONSTRUCTED BY THE DEVELOPER OF THE STREETS OF CALEDONIA PROJECT OR OTHERS TO BE SUBMITTED AND PERMITTED SEPARATELY FROM THIS MOTOMART PROJECT. THESE ITEMS ARE REPRESENTED AS BEING EXISTING ON THESE MOTOMART PLANS TO SHOW THE OVERALL INTENT OF THE DEVELOPMENT.
 - ALL METER PITS/VALVETS MUST BE INSTALLED WITHIN GREENSPACE PER THE WATER DISTRICT'S SPECIFICATIONS.

- DUCKETT CREEK SANITARY DISTRICT (DCSD) NOTES:**
- EXISTING SANITARY SEWER SERVICE SHALL NOT BE INTERRUPTED.
 - CONNECTION TO DCSD SANITARY SEWERS REQUIRES DCSD INSPECTION. CONTACT THE DCSD INSPECTION DEPARTMENT AT 636-441-1244 TO SCHEDULE INSPECTION. 48-HOUR ADVANCE NOTICE IS REQUIRED.
 - THE SANITARY CONNECTION IS A PRIVATE LATERAL CONNECTION. NO TESTING OF SANITARY MANHOLES OR MAINS IS NEEDED.

CONTRACTOR TO INSTALL 4" ELECTRICAL CONDUIT PER CUIVRE RIVER ELECTRIC COOP PLANS & SPECIFICATIONS AS A CONTINUATION OF CONDUIT INSTALLED BY OTHERS BEGINNING IN THIS APPROXIMATE LOCATION

FULL ACCESS IS ALLOWED AT THIS INTERSECTION UNTIL DUAL LEFT TURN LANES ARE REQUIRED ON CALEDONIA PARKWAY AT HIGHWAY DD. AT WHICH TIME THE ENTRANCE BETWEEN LOTS 6 AND 7 WILL BE CONVERTED TO A RIGHT-IN/RIGHT-OUT ACCESS POINT.

END OF ELECTRIC CONDUIT RUN BY THIS PROJECT. PROVIDE 4" PVC RISER WITH CAP AT GRADE.

CONTRACTOR TO INSTALL 4" ELECTRICAL CONDUIT PER CUIVRE RIVER ELECTRIC COOP PLANS & SPECIFICATIONS AS A CONTINUATION OF CONDUIT INSTALLED BY OTHERS BEGINNING IN THIS APPROXIMATE LOCATION

CONTRACTOR TO INSTALL 4" ELECTRICAL CONDUIT PER CUIVRE RIVER ELECTRIC COOP PLANS & SPECIFICATIONS AS A CONTINUATION OF CONDUIT INSTALLED BY OTHERS BEGINNING IN THIS APPROXIMATE LOCATION

CONTRACTOR TO INSTALL 4" ELECTRICAL CONDUIT PER CUIVRE RIVER ELECTRIC COOP PLANS & SPECIFICATIONS AS A CONTINUATION OF CONDUIT INSTALLED BY OTHERS BEGINNING IN THIS APPROXIMATE LOCATION

CONTRACTOR TO INSTALL 4" ELECTRICAL CONDUIT PER CUIVRE RIVER ELECTRIC COOP PLANS & SPECIFICATIONS AS A CONTINUATION OF CONDUIT INSTALLED BY OTHERS BEGINNING IN THIS APPROXIMATE LOCATION

CONTRACTOR TO INSTALL 4" ELECTRICAL CONDUIT PER CUIVRE RIVER ELECTRIC COOP PLANS & SPECIFICATIONS AS A CONTINUATION OF CONDUIT INSTALLED BY OTHERS BEGINNING IN THIS APPROXIMATE LOCATION

CONTRACTOR TO INSTALL 4" ELECTRICAL CONDUIT PER CUIVRE RIVER ELECTRIC COOP PLANS & SPECIFICATIONS AS A CONTINUATION OF CONDUIT INSTALLED BY OTHERS BEGINNING IN THIS APPROXIMATE LOCATION

CONTRACTOR TO INSTALL 4" ELECTRICAL CONDUIT PER CUIVRE RIVER ELECTRIC COOP PLANS & SPECIFICATIONS AS A CONTINUATION OF CONDUIT INSTALLED BY OTHERS BEGINNING IN THIS APPROXIMATE LOCATION

CONTRACTOR TO INSTALL 4" ELECTRICAL CONDUIT PER CUIVRE RIVER ELECTRIC COOP PLANS & SPECIFICATIONS AS A CONTINUATION OF CONDUIT INSTALLED BY OTHERS BEGINNING IN THIS APPROXIMATE LOCATION

CONTRACTOR TO INSTALL 4" ELECTRICAL CONDUIT PER CUIVRE RIVER ELECTRIC COOP PLANS & SPECIFICATIONS AS A CONTINUATION OF CONDUIT INSTALLED BY OTHERS BEGINNING IN THIS APPROXIMATE LOCATION

CONTRACTOR TO INSTALL 4" ELECTRICAL CONDUIT PER CUIVRE RIVER ELECTRIC COOP PLANS & SPECIFICATIONS AS A CONTINUATION OF CONDUIT INSTALLED BY OTHERS BEGINNING IN THIS APPROXIMATE LOCATION



FGM Architects Inc.
1 Metropolis Sq, Ste. 1945
St. Louis, Missouri 63102

314.439.1601 OFFICE
314.439.1602 FAX

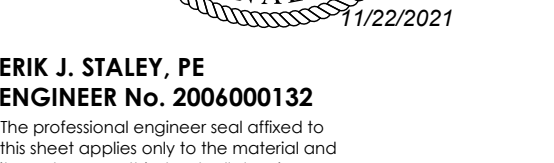
MISSOURI CERTIFICATE OF AUTHORITY #000311

ARCHITECTURE
FGM ARCHITECTS
1 METROPOLIS SQ, STE. 1945
ST. LOUIS, MISSOURI, 63102
314.439.1601 (O) 314.439.1602(F)
MO STATE CERTIFICATE OF AUTHORITY NO. 000311

CIVIL
THE CLAYTON ENGINEERING COMPANY, INC.
2288 WELSH INDUSTRIAL CT.
ST. LOUIS, MO 63146
314.628.8888 (O) 314.628.8888(F)
MO STATE CERTIFICATE OF AUTHORITY NO. 000067
PROF. ENG. NO. 000067 & PROF. SURVEYING NO. 000014

STRUCTURAL
ASDG, LLC
1209 LINCOLN HIGHWAY
FAIRVIEW HEIGHTS, IL 62206
618.628.0887 (O) 618.628.0888(F)
IL STATE CERTIFICATE OF AUTHORITY NO. 184-003843

M.E.P.
BRIC PARTNERSHIP, LLC
100 EAST WASHINGTON, SUITE 220
BELLVILLE, IL 62220
618.277.5200 (O) 618.277.5272(F)
IL STATE CERTIFICATE OF AUTHORITY NO. 184-003843



ERIK J. STALEY, PE
ENGINEER No. 200600132
The professional engineer seal offered to this sheet applies only to the material and items shown on this sheet. All drawings, instruments or other documents not containing this seal shall not be considered prepared by this engineer, and this engineer expressly disclaims any and all responsibility for such plans, drawings or documents not containing this seal.

ISSUANCE

NO.	DATE	DESCRIPTION
1.	08/25/21	CITY SUBMITTAL
2.	09/22/21	2nd CITY SUBMITTAL
3.	10/06/21	3rd CITY SUBMITTAL
4.	11/22/21	4th CITY SUBMITTAL (BID SET)

UTILITY PLAN

**O'FALLON, MO MOTOMART
NEW CONVENIENCE CENTER
AND CARWASH
FKG OIL COMPANY**

UTILITY PLAN

C4.0

SHEET NO.

JOB NO. 21-31331.01

© 2021 FGM Architects Inc.

Call Before you DIG
Dial 811 or TOLL FREE
1-800-344-7483
mo1call.com
MISSOURI ONE-CALL SYSTEM INC.

Underground facilities, structures & utilities have been plotted from available surveys, records & information, and therefore, do not necessarily reflect the actual existence, nonexistence, size, type, number, or location of these facilities, structures, & utilities.

The Contractor shall be responsible for verifying the actual location of all underground facilities, structures, & utilities, either shown or not shown on these plans. The underground facilities, structures, & utilities shall be located in the field prior to any grading, excavation or construction of improvements. These provisions shall in no way absolve any party from complying with the Underground Facility Safety and Damage Prevention Act.

The original signed and sealed of this drawing is on file at the office of The Clayton Engineering Company. Any modifications to this drawing shall release said The Clayton Engineering Company, the Engineer and/or Surveyor whose seal appears hereon from any liability resulting from said unauthorized modifications. The signed and sealed original is the official document and shall take precedence over any digital version.

Copyright 2021
Clayton Engineering Co.
All Rights Reserved

Designed: EJS/RFK
Drawn: EJS/RFK
Date: 11-14-21

(314) 652-8888 FAX: (314) 652-8888
No. Cert. of Authority - Prof. Engineering #000067
No. Cert. of Authority - Prof. Surveying #000114
IL Dept. Financial & Prof. Reg. Prof. Design & Engineering Corp. #184.000879

Project Number: 20350

PRINTED ON 24" x 36" SHEET

Scale 1" = 20'

Note: Caution should be taken in comparing the written scale to the graphic scale to ascertain if this plan has been enlarged or reduced.

STORM SEWER STRUCTURES:
MEET MSD STANDARD CONSTRUCTION SPECIFICATIONS FOR SEWERS AND DRAINAGE FACILITIES LATEST EDITION.

MISSOURI ROUTE DD

Scale 1" = 20'

Scale 1" = 20'

Scale 1" = 20'

Scale 1" = 20'

Scale 1" = 20'

Scale 1" = 20'