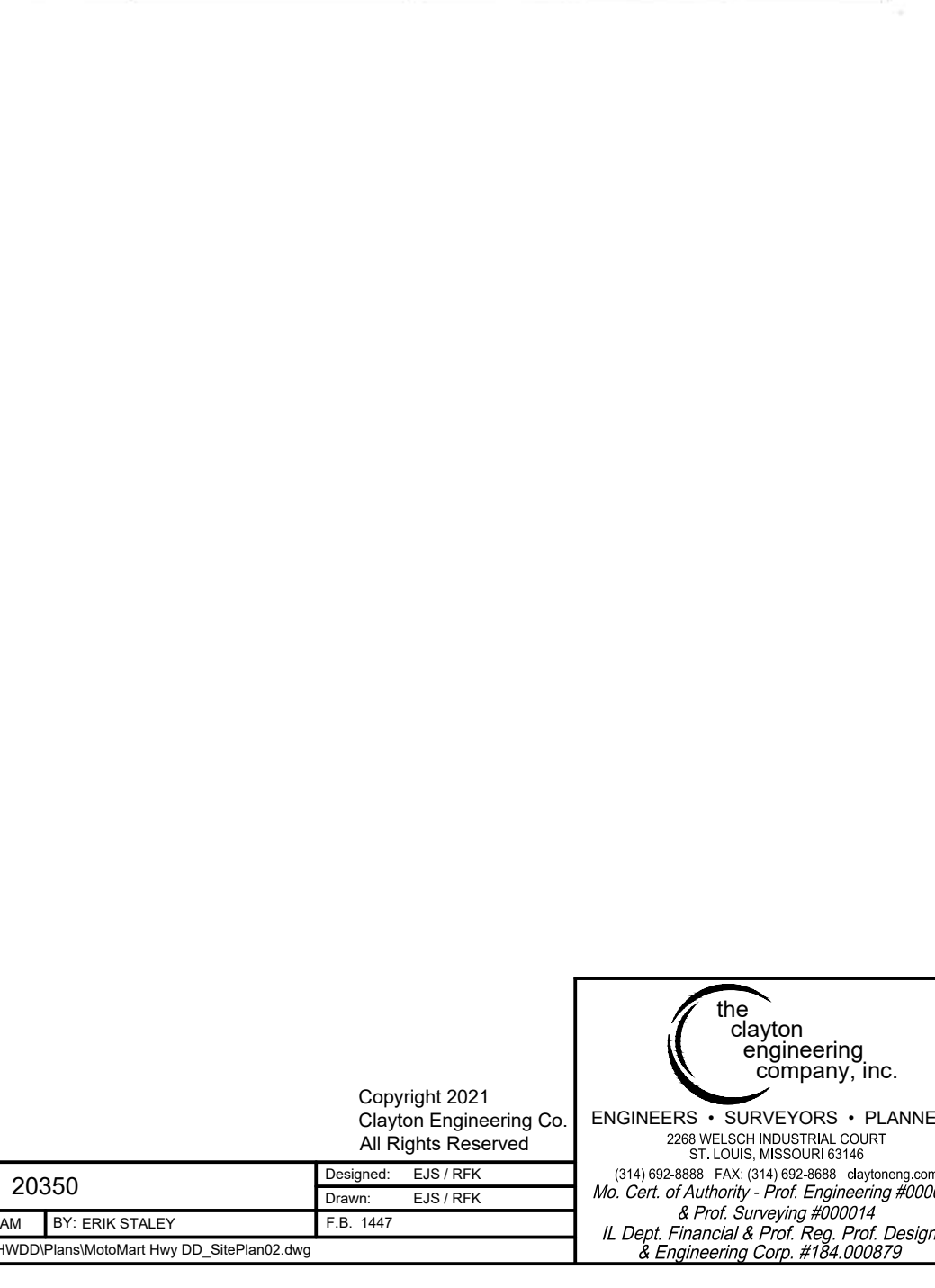
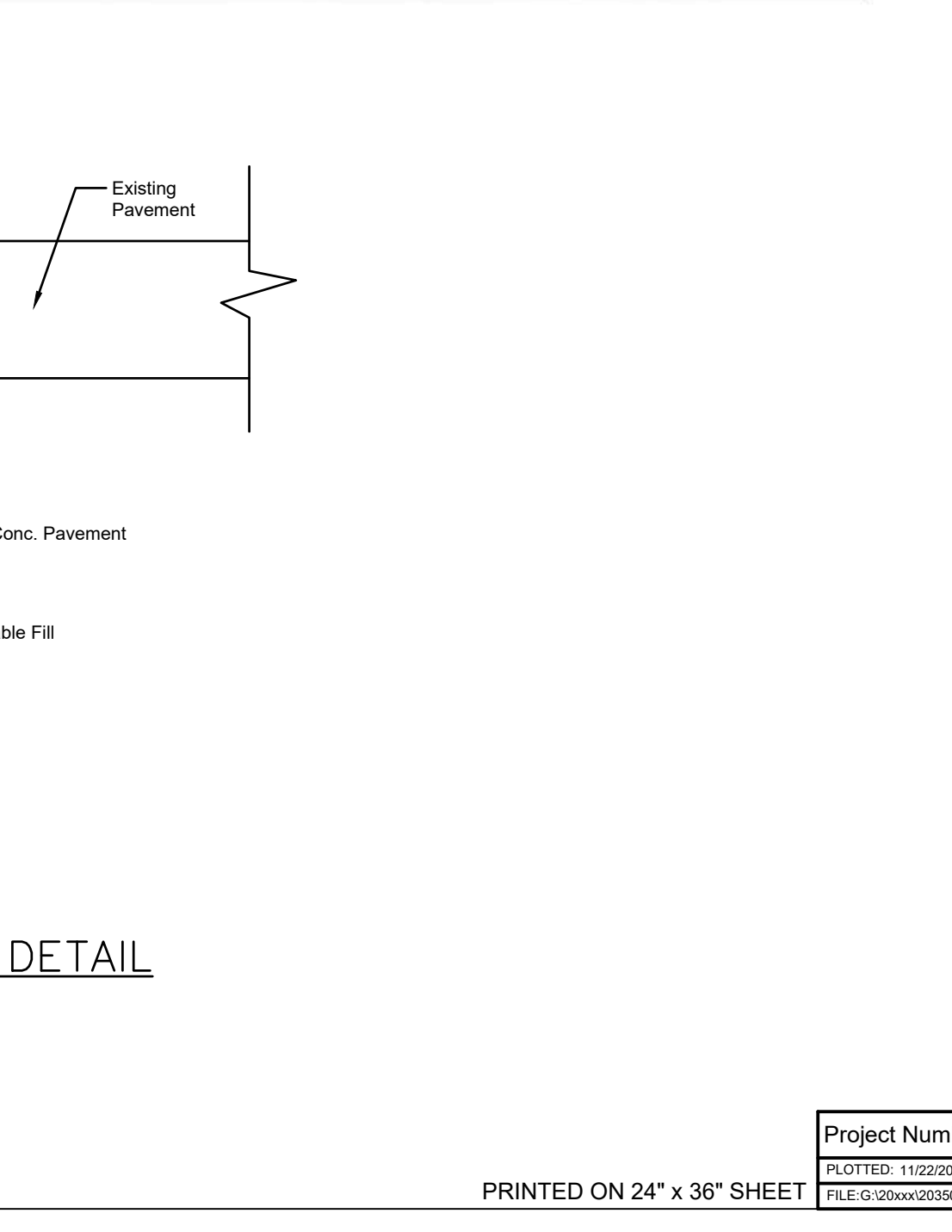
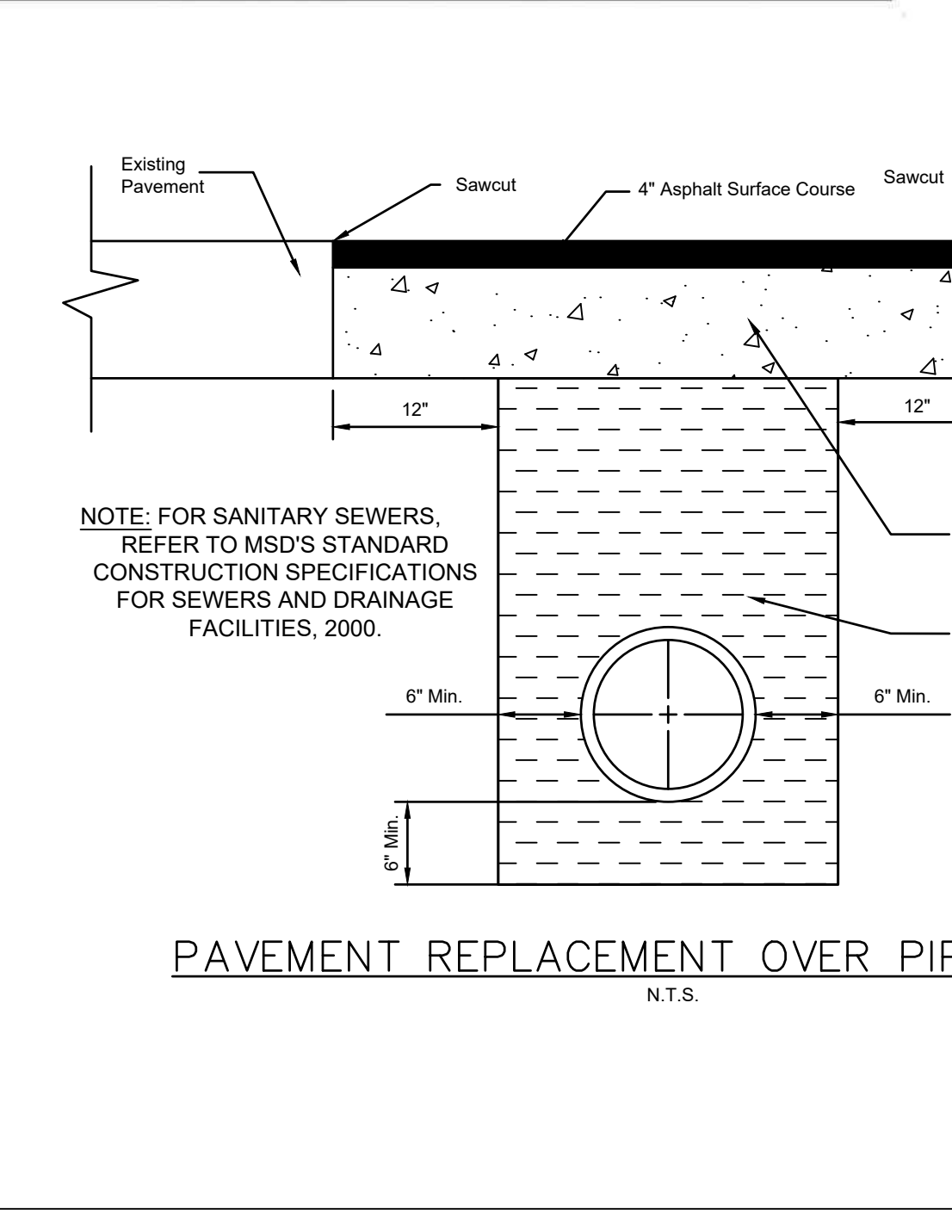


Pipe Size (inches)	Minimum Trench Width (inches)	Minimum Side Wall Clearance (inches)
6	30	6
8	30	6
12	30	6
15	30	6
18	35	6
21	39	6.5
24	44	7
27	49	8
30	54	8.5
33	58	9
36	64	10
42	73	11
48	83	12.5
54	92	13.5
60	102	15



fgma

FGM Architects Inc.
1 Metropolitan Sq. Ste. 1945
St. Louis, Missouri 63102

314.439.1601 OFFICE
314.439.1602 FAX

MISSOURI CERTIFICATE OF AUTHORITY #000311

ARCHITECTURE
FGM ARCHITECTS
1 METROPOLITAN SQ, STE. 1945
ST. LOUIS, MISSOURI 63102
314.439.1601 (O) 314.439.1602(F)
MO STATE CERTIFICATE OF AUTHORITY NO. 000311

CIVIL
THE CLAYTON ENGINEERING COMPANY, INC.
2388 WELSH INDUSTRIAL CT.
ST. LOUIS, MO 63146
314.692.8888 (O) 314.692.8888(F)
MO STATE CERTIFICATE OF AUTHORITY PROF. ENG. NO. 000067 & PROF. SURVEYING NO. 000014

STRUCTURAL
ASDG, LLC
100 EAST WASHINGTON, SUITE 220
BELLVILLE, IL 62220
618.277.5200 (O) 618.277.5277(F)
IL STATE CERTIFICATE OF AUTHORITY NO. 184-00343

M.E.P.
BRIC PARTNERSHIP, LLC
100 EAST WASHINGTON, SUITE 220
BELLVILLE, IL 62220
618.277.5200 (O) 618.277.5277(F)
IL STATE CERTIFICATE OF AUTHORITY NO. 184-00343

Erk J. Staley - Professional Engineer (PE 2006000132)

STATE OF MISSOURI
ERK J. STALEY
NUMBER PE-2006000132
11/22/2021

ERIK J. STALEY, PE
ENGINEER NO. 2006000132

The professional engineer seal offered to this sheet applies only to the material and items shown on this sheet. All drawings, instruments or other documents not containing this seal shall not be considered prepared by this engineer, and this engineer expressly disclaims any and all responsibility for such plans, drawings or documents not including this seal.

ISSUANCE

NO.	DATE	DESCRIPTION
1.	08/25/21	CITY SUBMITTAL
2.	09/22/21	2nd CITY SUBMITTAL
3.	10/06/21	3rd CITY SUBMITTAL
4.	11/22/21	4th CITY SUBMITTAL (BID SET)

DATE 08/25/2021

O'FALLON, MO MOTOMART NEW CONVENIENCE CENTER AND CARWASH
FKG OIL COMPANY

CONSTRUCTION DETAILS 4

SHEET NO. C6.3

JOB NO. 21-31331.01

© 2021 FGM Architects Inc.

Copyright 2021 Clayton Engineering Co. All Rights Reserved

ENGINEERS • SURVEYORS • PLANNERS
2388 WELSH INDUSTRIAL COURT
ST. LOUIS, MISSOURI 63146
(314) 692-8888 FAX (314) 692-8888 claytoneng.com
Mo. Cert. of Authority - Prof. Engineering #000067
& Prof. Surveying #000014
IL Dept. Financial & Prof. Reg. Prof. Design & Engineering Corp. #184-00079

Project Number: 20350
Designed: EJS / RPK
Drawn: EJS / RPK
PLOTTER: 11/22/2021 10:33 AM BY: ERK STALEY
FILE: C:\2021\20350_MOTOMART\DWG\Construction\SheetC6.3.dwg

PRINTED ON 24" x 36" SHEET