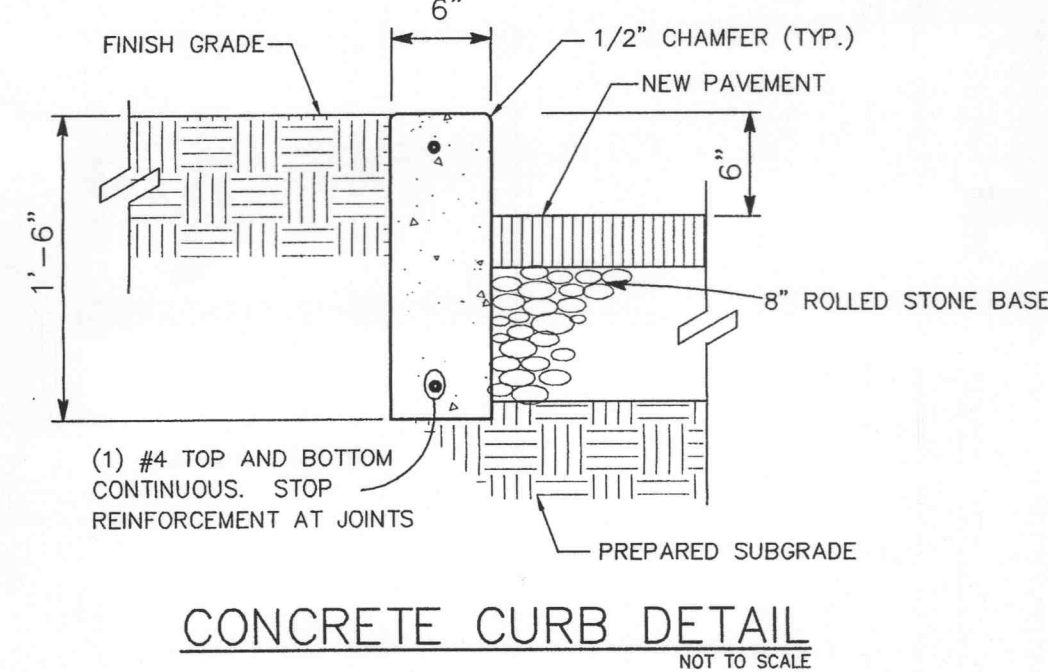
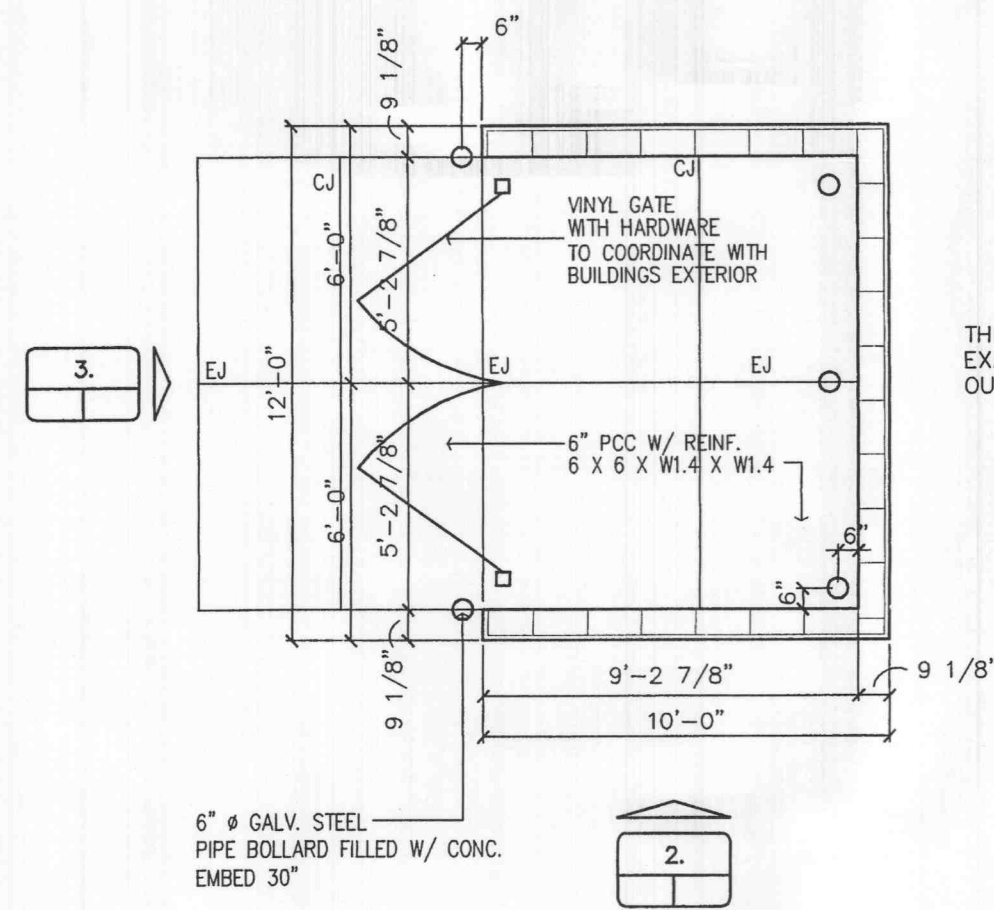


- CONSTRUCTION SPECIFICATIONS**
1. Stone Size - Use 2" stone, or reclaimed or recycled concrete equivalent.
 2. Length - As required, but not less than 50 feet (except on a single residence lot where a 30 foot minimum length would apply).
 3. Thickness - Not less than six (6) inches.
 4. Width - Twenty (20) foot minimum, but not less than the full width at points where ingress or egress occurs.
 5. Filter Cloth - Will be placed over the entire area prior to placing of stone. Filter will not be required on a single family residence lot.
 6. Surface Water - All surface water flowing or diverted toward construction entrances shall be piped across the entrance. If piping is impractical, a mountable berm with 5:1 slopes will be permitted.
 7. Maintenance - The entrance shall be maintained in a condition which will prevent tracking or flowing of sediment onto public rights-of-way. This may require periodic top dressing with additional stone as conditions demand and repair and/or cleanout of any measures used to trap sediment. All sediment spilled, dropped, washed or tracked onto public rights-of-way must be removed immediately.
 8. Washing - Wheels shall be cleaned to remove sediment prior to entrance onto public rights-of-way. When washing is required, it shall be done on an area stabilized with stone and which drains into an approved sediment trapping device.
 9. Periodic inspection and needed maintenance shall be provided after each rain.

STABILIZED CONSTRUCTION ENTRANCE/WASHDOWN AREA
NOT TO SCALE

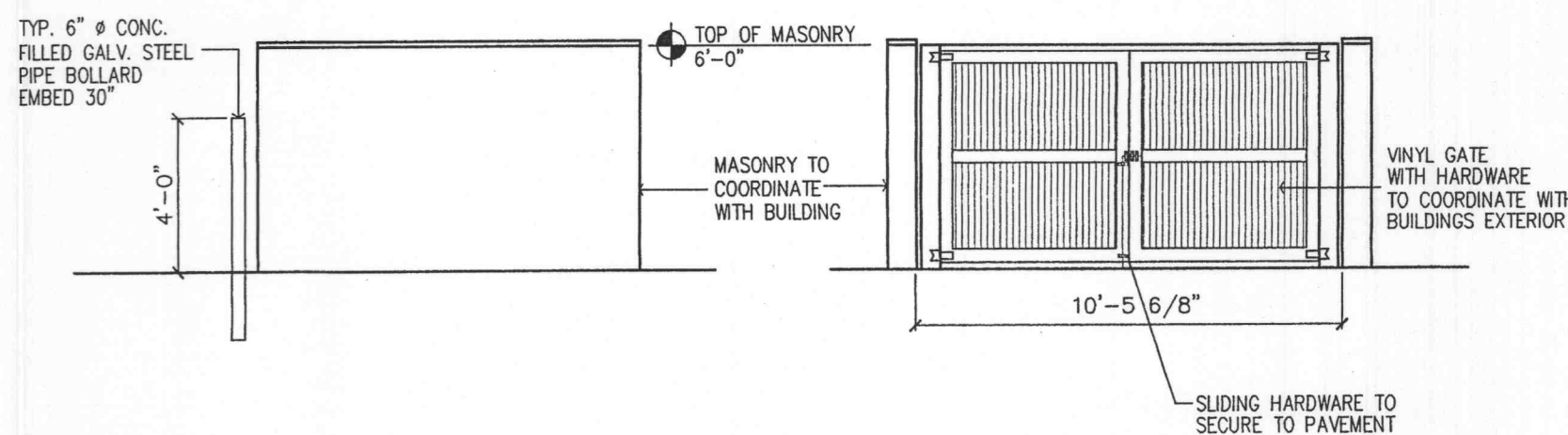


CONCRETE CURB DETAIL
NOT TO SCALE



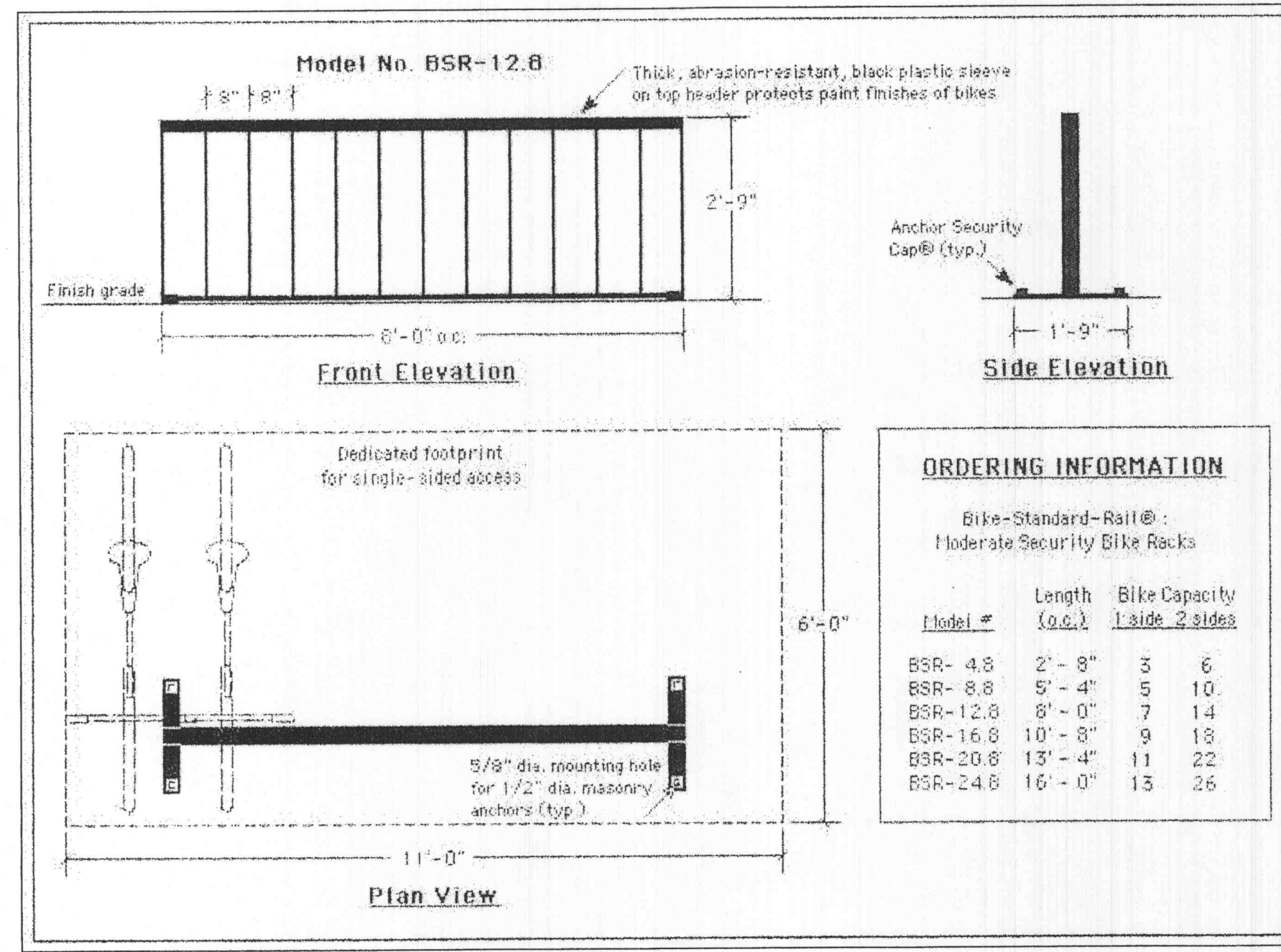
1. TRASH ENCLOSURE PLAN
NOT TO SCALE

THIS DETAIL HAS BEEN PROVIDED FOR CONCEPTUAL APPROVAL ONLY. EXACT DETAIL OF MATERIAL AND CONSTRUCTION METHODS SHALL BE OUTLINES IN THE ARCHITECTURAL BUILDING PLANS.

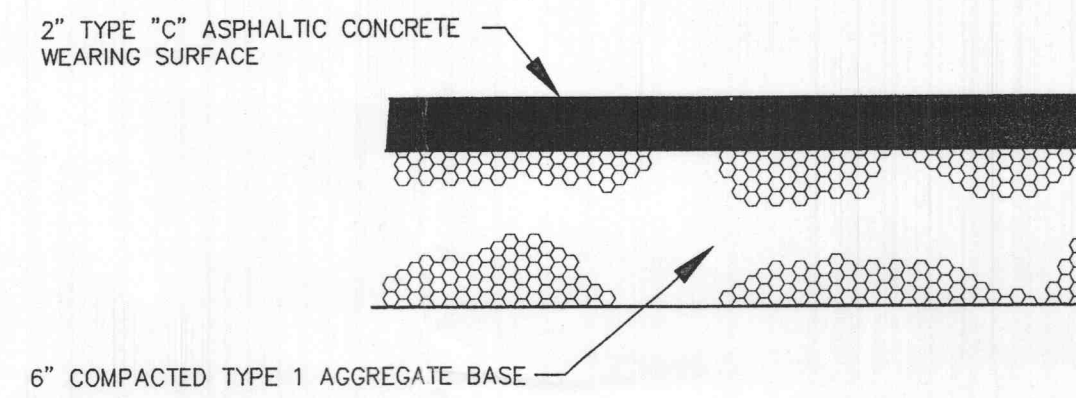


2. ELEVATION
NOT TO SCALE

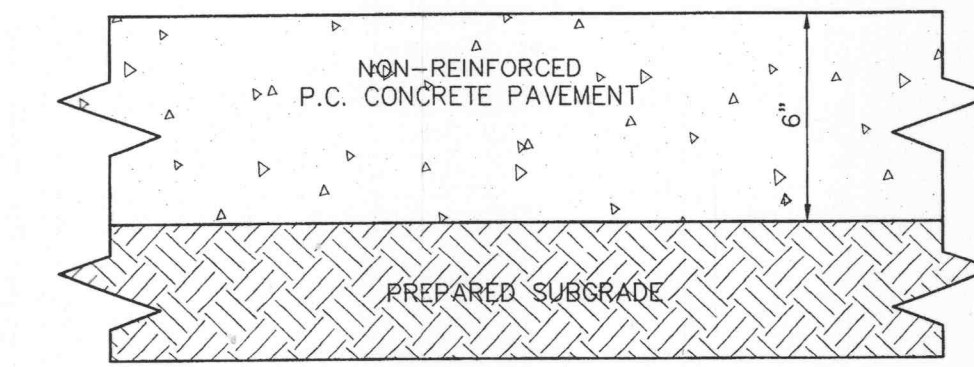
3. ELEVATION
NOT TO SCALE



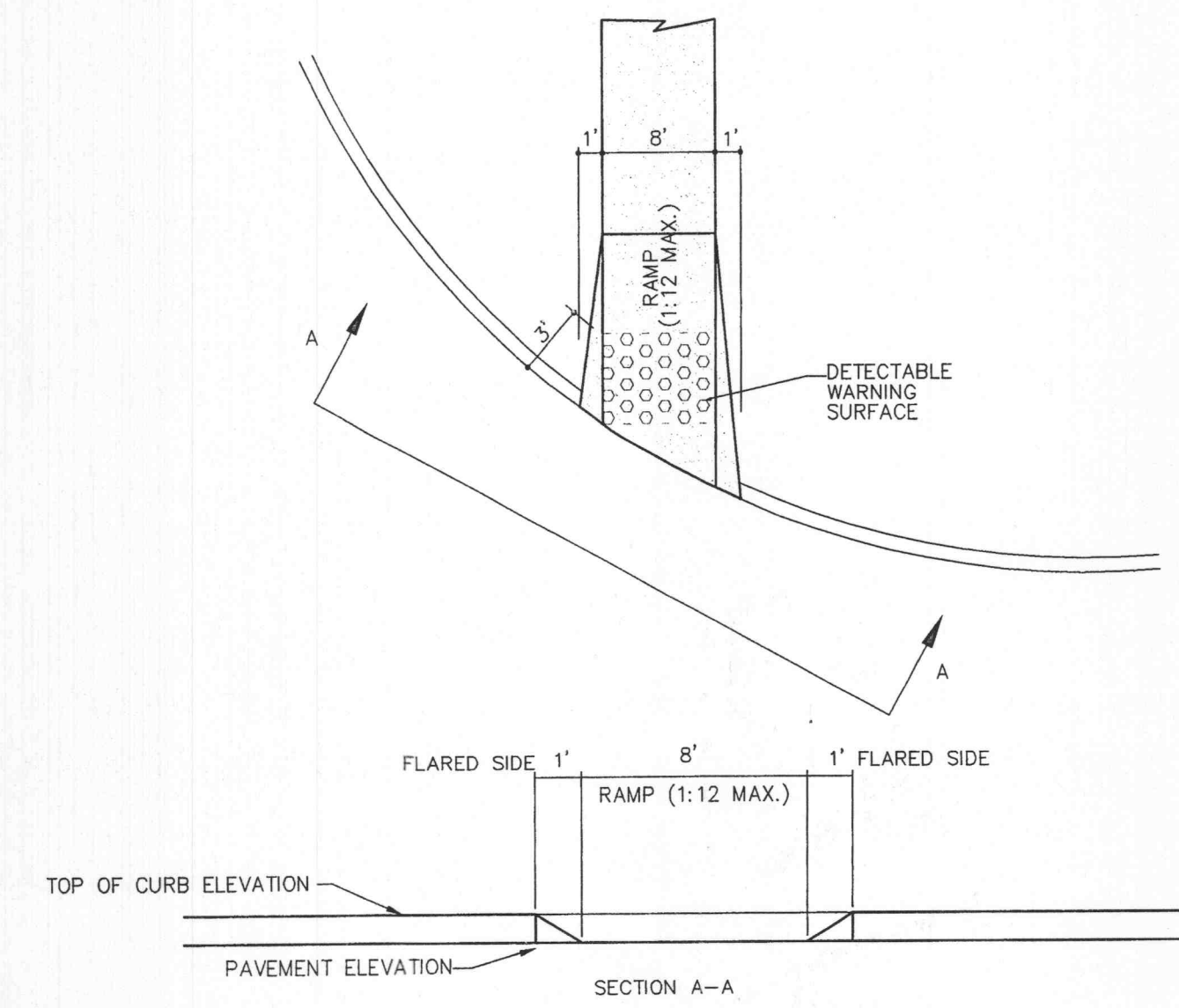
BICYCLE RACK DETAIL
OR EQUAL
NOT TO SCALE



ASPHALT PAVEMENT DETAIL
NOT TO SCALE

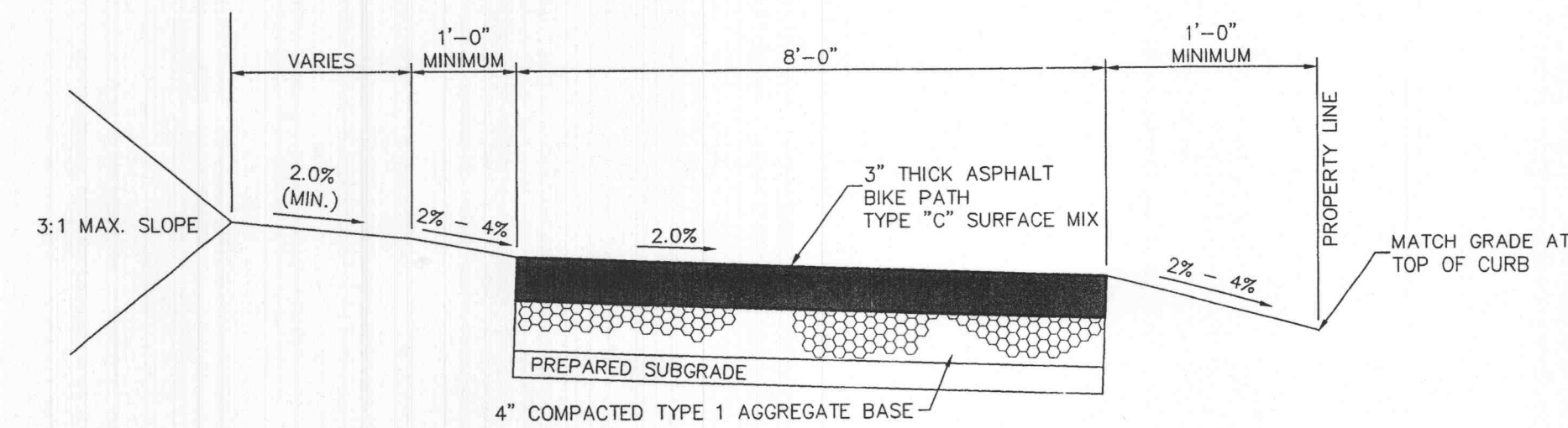


TRASH ENCLOSURE PAVEMENT DETAIL
NOT TO SCALE



HANDICAPPED RAMP WITH
DETECTABLE WARNING DETAIL
NOT TO SCALE

Note: Handicapped ramp to be 8' wide to match the trail and to be constructed of concrete.



MULTI-USE TRAIL DETAIL
NOT TO SCALE

NOTES:

- PROVIDE HANDICAP RAMP WHERE TRAIL INTERSECTS ACCESS DRIVES OR STREETS OR WHERE TRAIL INTERSECTS WITH CURBING (SEE PLAN).
- PROVIDE STRIPING OR A COLORED TEXTURED PAVEMENT THROUGH THE ACCESS DRIVES OR STREETS INTO THE DEVELOPMENT.
- MAXIMUM SLOPE OF THE PATH SHALL NOT EXCEED 8% AND 2% CROSS SLOPE PER CITY OF O'FALLON SPECIFICATIONS.
- THE TRAIL SHALL BE CONSTRUCTED WITH A CONSISTENT SLOPE WITH VERTICAL CURVES A MINIMUM OF 50' IN LENGTH. AFTER FINAL COMPRESSION, THE SURFACE SHALL BE SMOOTH AND TRUE TO THE ESTABLISHED CROWN AND GRADE. ANY LOW OR DEFECTIVE PLACES SHALL IMMEDIATELY BE REMEDIED BY CUTTING OUT THE COURSE AT SUCH SPOTS AND REPLACING IT WITH FRESH HOT MIXTURE, WHICH SHALL BE IMMEDIATELY COMPACTED TO CONFORM WITH THE SURROUNDING AREA AND SHALL BE THOROUGHLY BONDED TO IT. THE FINISHED PAVEMENT SHALL BE SET FREE FROM DEPRESSIONS EXCEEDING ONE-EIGHTH INCH AS MEASURED WITH A TEN-FOOT STRAIGHT EDGE PARALLELING THE CENTERLINE OF THE TRAIL.



ACI FRANKISER HUTCHENS, INC.
Architecture Planning Interiors
11477 OLDE CABIN ROAD
SUITE 100
ST. LOUIS, MISSOURI 63141
314-991-8878 FAX
314-991-9993

ADDITION TO FORT ZUMWALT
MOUNT HOPE ELEMENTARY
for
Fort Zumwalt
School District

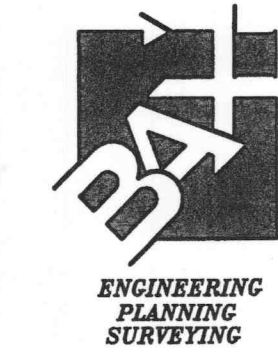
Owner
Fort Zumwalt School District
Architect
ACI/ Frankiser & Hutchens
Structural Engineer
Ibrahim Engineering Corp.
Mechanical / Electrical Engineer
Thomas Berkeley
Consulting Engineer, Inc.
Civil Engineer
Bax Engineering

DRAWING ISSUE / REVISION

Rev. No.	Description	Date
1	PLANNING DEPT. COMMENTS	05/03/06
	P & Z APPROVAL (99-108.01)	05/18/06

DISCLAIMER OF RESPONSIBILITY
I hereby specify that the documents intended to be authenticated by my seal are limited to this sheet, and I hereby disclaim any responsibility for all other Drawings, Specifications, Estimates, Reports or other documents or instruments relating to or intended to be used for any part or parts of the architectural or engineering project or survey.

Copyright 2004
Bax Engineering Company, Inc.
All Rights Reserved
Project No. 03-12485 Date: 01-30-04
Drawn: KLV File: 12485CON.dwg
Designer: KTK Checked: CLH



C-3

CONSTRUCTION DETAILS