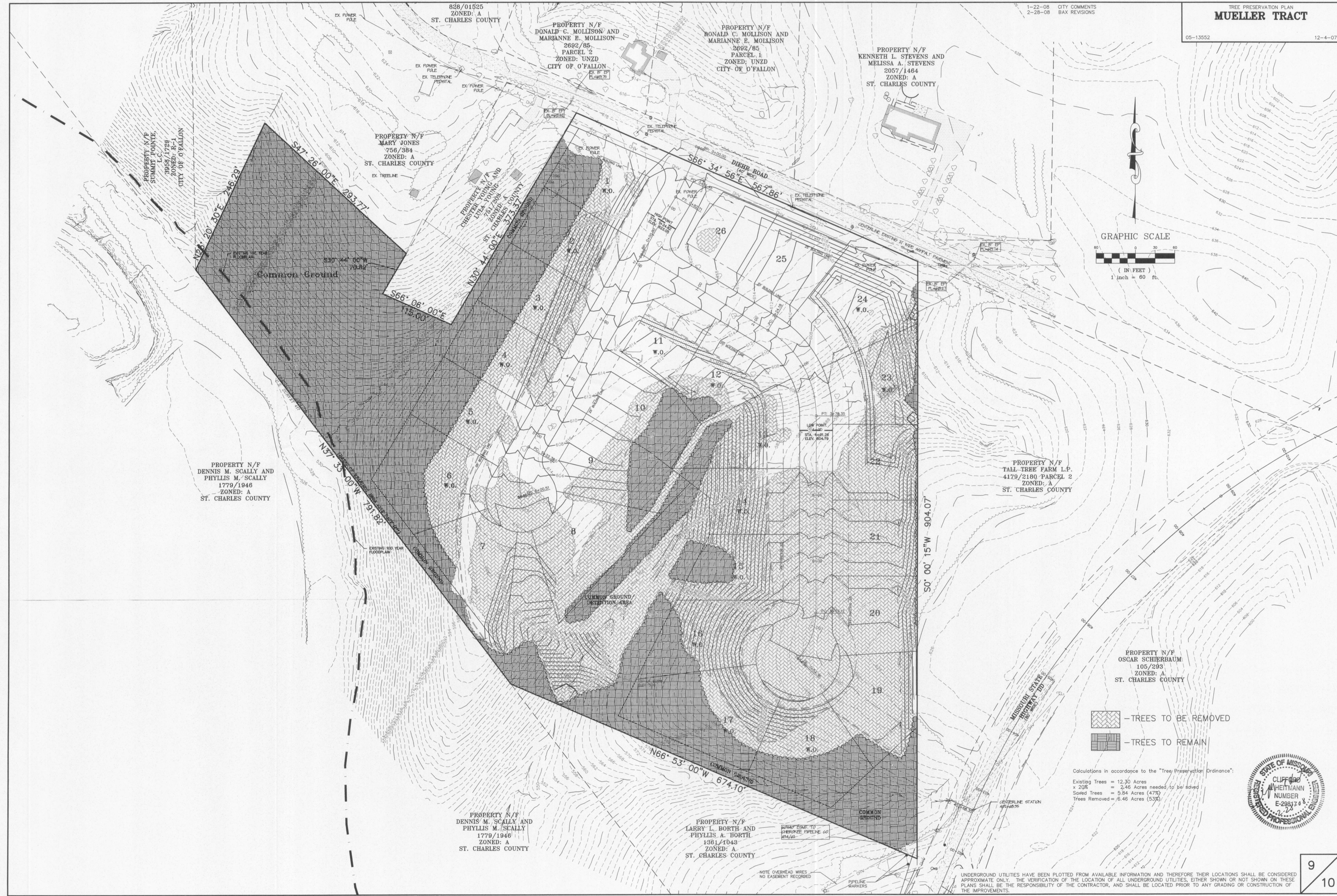
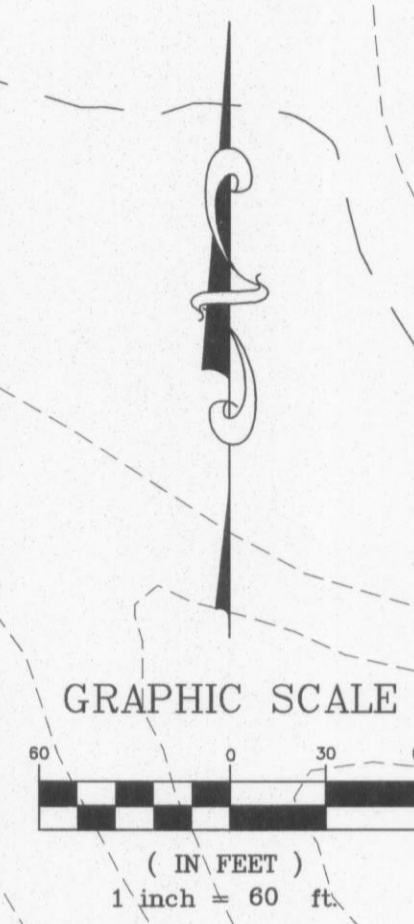


TREE PRESERVATION PLAN
MUELLER TRACT

05-13552

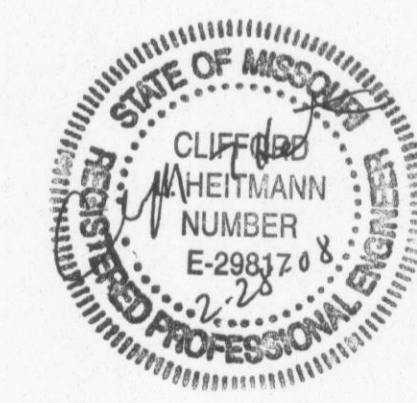
12-4-07

1-22-08 CITY COMMENTS
2-28-08 BAX REVISIONS



- TREES TO BE REMOVED
- TREES TO REMAIN

Calculations in accordance to the "Tree Preservation Ordinance":
 Existing Trees = 12.30 Acres
 x 20% = 2.46 Acres needed to be saved
 Saved Trees = 5.84 Acres (47%)
 Trees Removed = 6.46 Acres (53%)



UNDERGROUND UTILITIES HAVE BEEN PLOTTED FROM AVAILABLE INFORMATION AND THEREFORE THEIR LOCATIONS SHALL BE CONSIDERED APPROXIMATE ONLY. THE VERIFICATION OF THE LOCATION OF ALL UNDERGROUND UTILITIES, EITHER SHOWN OR NOT SHOWN ON THESE PLANS SHALL BE THE RESPONSIBILITY OF THE CONTRACTOR, AND SHALL BE LOCATED PRIOR TO ANY GRADING OR CONSTRUCTION OF THE IMPROVEMENTS.