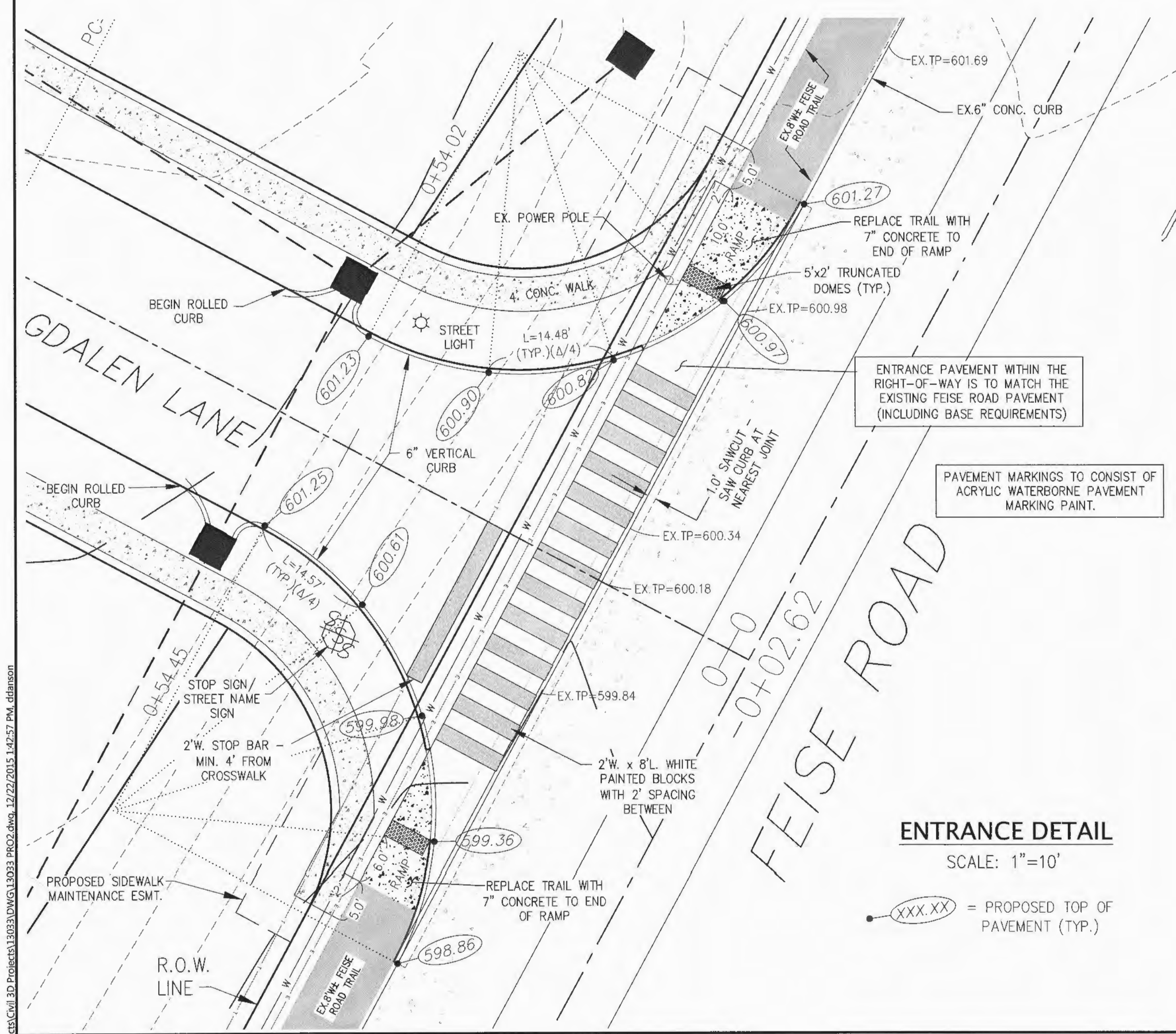
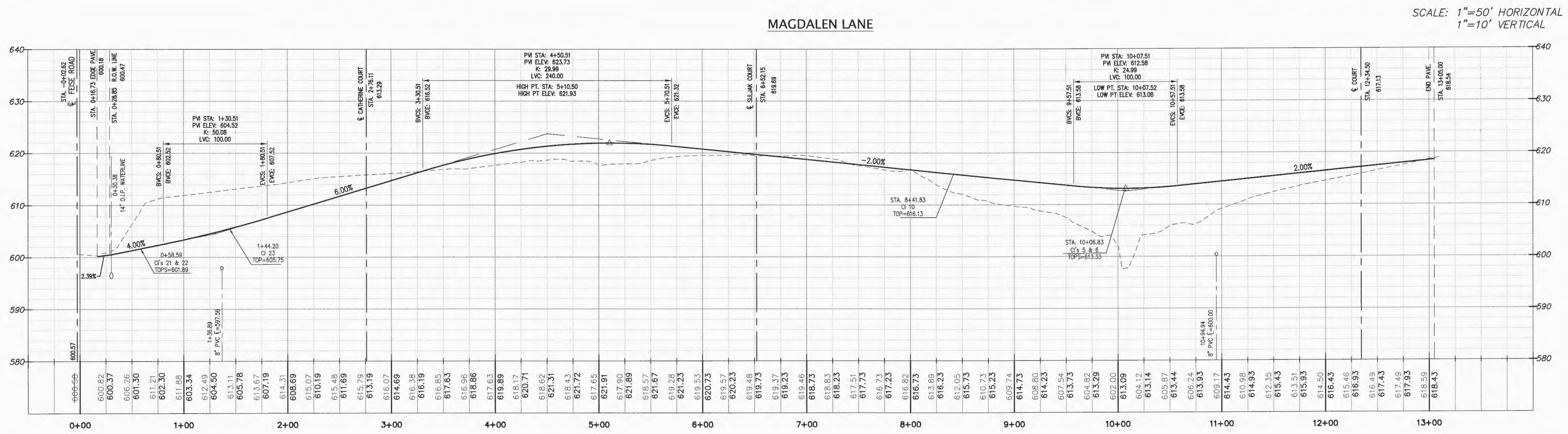
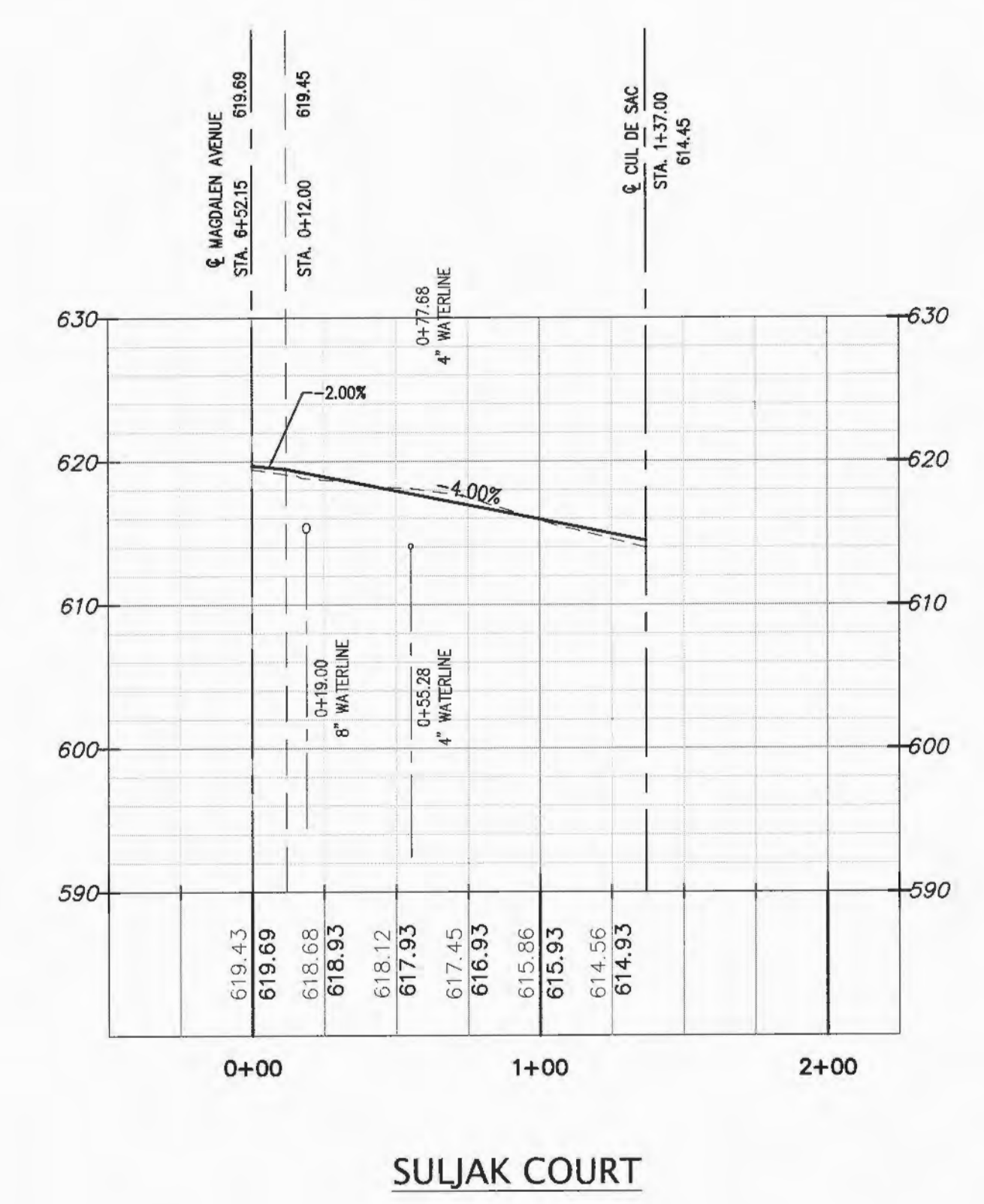
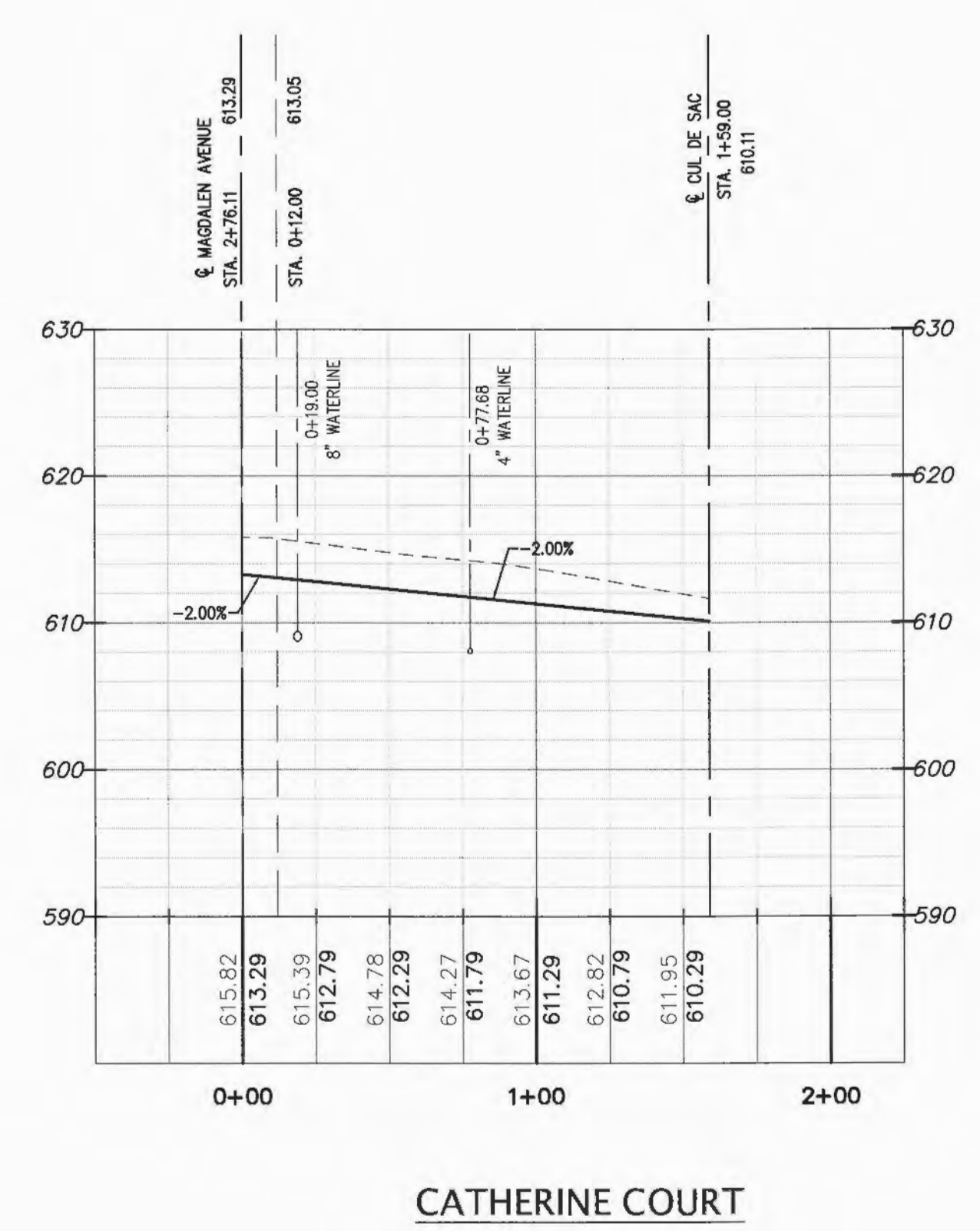


V:\P\15620111\Project\Civil\_3D\Project\15620111\03\DWG\13033\_PRC2.dwg, 12/22/2015, 10:57 PM, ddhamon



**ENTRANCE DETAIL**  
SCALE: 1"=10'  
●XXX.XX = PROPOSED TOP OF PAVEMENT (TYP.)



PROJECT TITLE

**MUIRFIELD  
MANOR**

PRS No. 13033.MCHO.00R

**PICKETT, RAY & SILVER INC**

CIVIL ENGINEERING, LAND SURVEYING,  
AND NATURAL RESOURCES SERVICES

Phone (636) 397-1211 Fax (636) 397-1104  
www.prs3.com 1-800-708-3919

**ENGINEER'S AUTHENTICATION**  
THE RESPONSIBILITY FOR PROFESSIONAL ENGINEERING LIABILITY ON THIS PROJECT IS LIMITED TO THE SET OF PLANS AUTHENTICATED BY THE SIGNATURE AND DATE HEREINAFTER ATTACHED. RESPONSIBILITY IS DISCLAIMED FOR ALL OTHER ENGINEERING PLANS INCORPORATED IN THIS PROJECT AND SPECIFICALLY EXCLUDES REVISIONS AFTER THIS DATE UNLESS REAUTHENTICATED.



DOUGLAS S. TIMMANN  
PROFESSIONAL ENGINEER LICENSE E-23345

**MCKELVEY HOMES**  
218 Chesterfield Towne Centre  
Chesterfield, Missouri 63005  
Phone: 636-530-6900

Developer / Owner Information

P+Z No. 28-13

City No.

Page No.