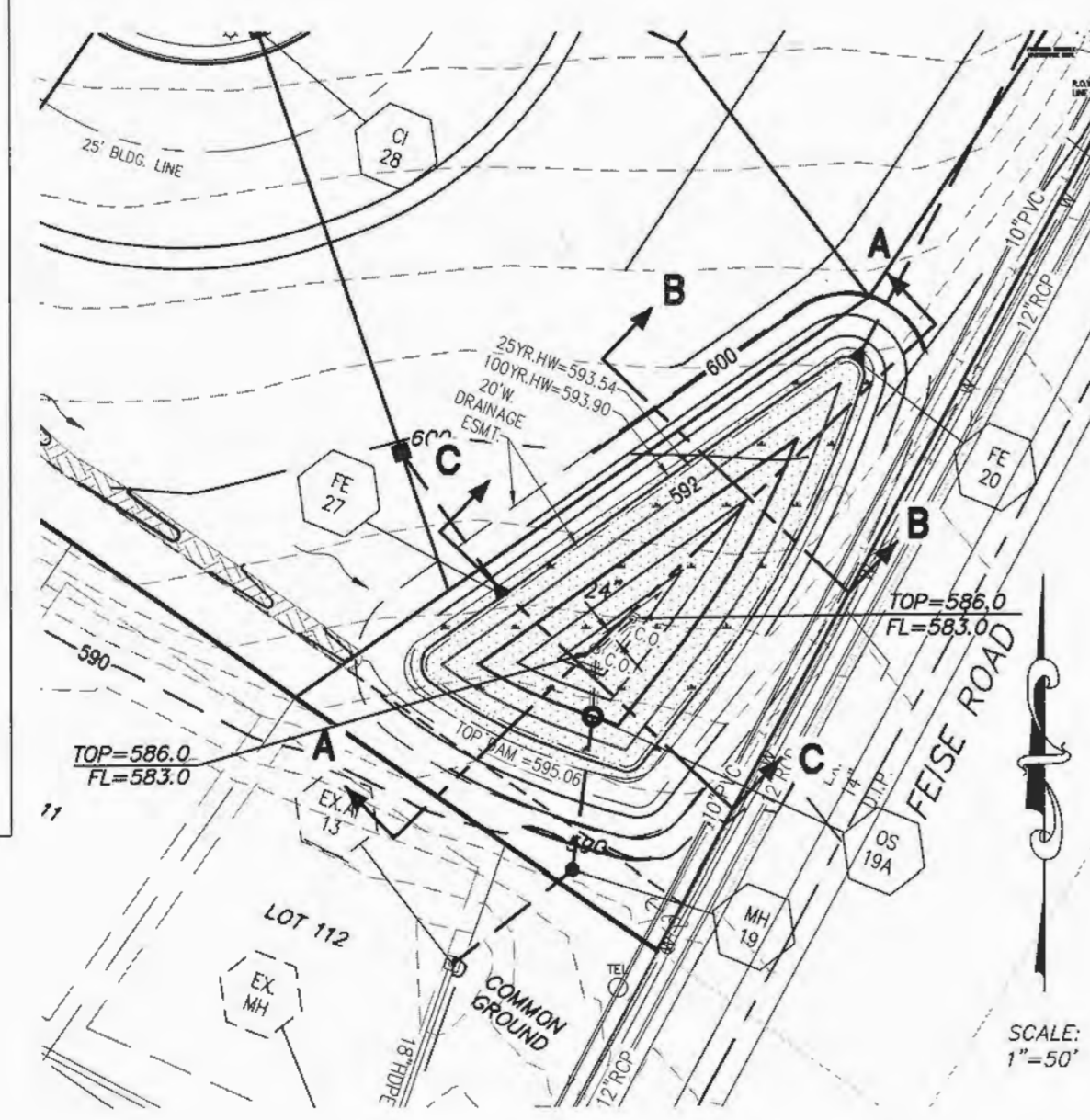
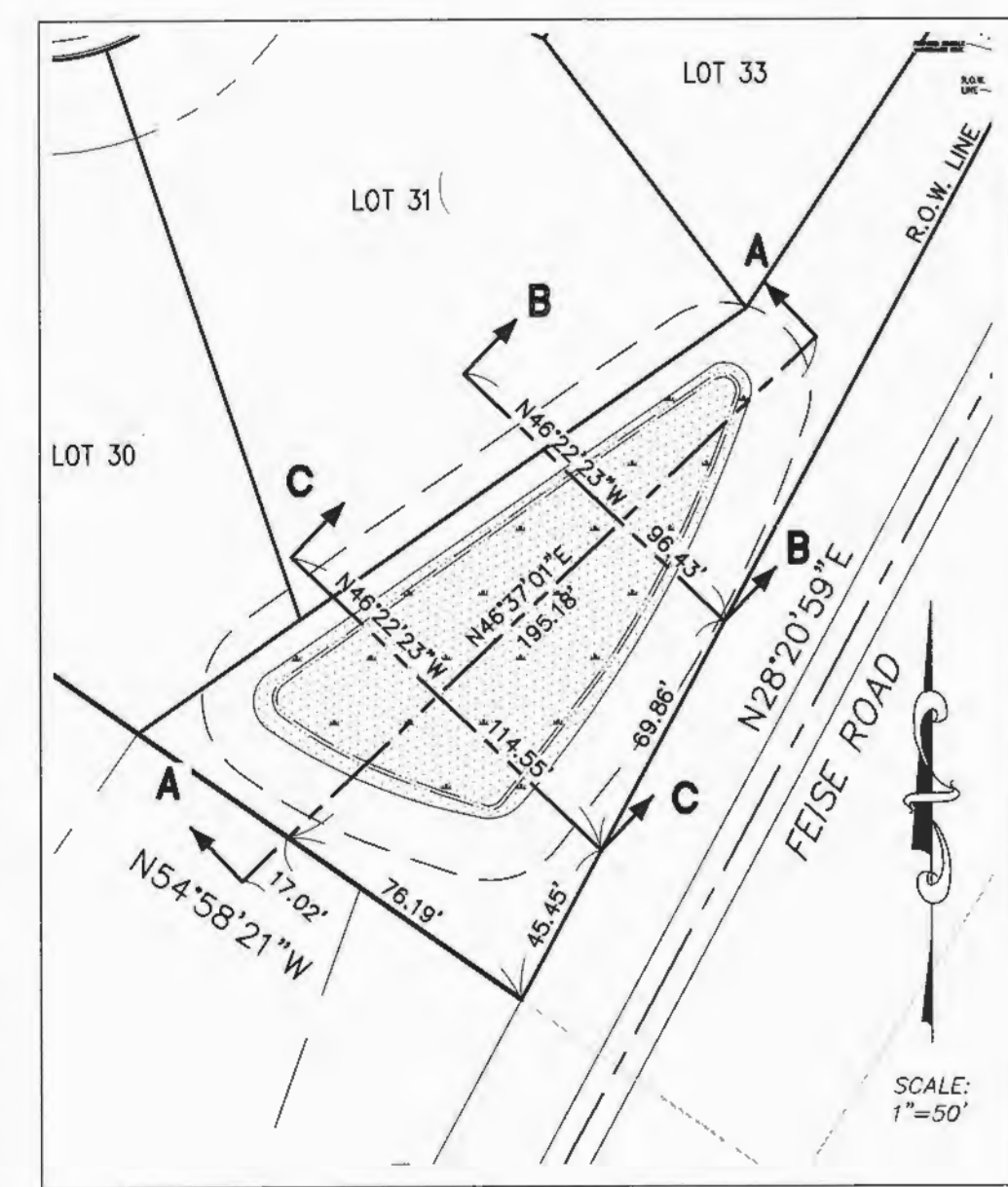
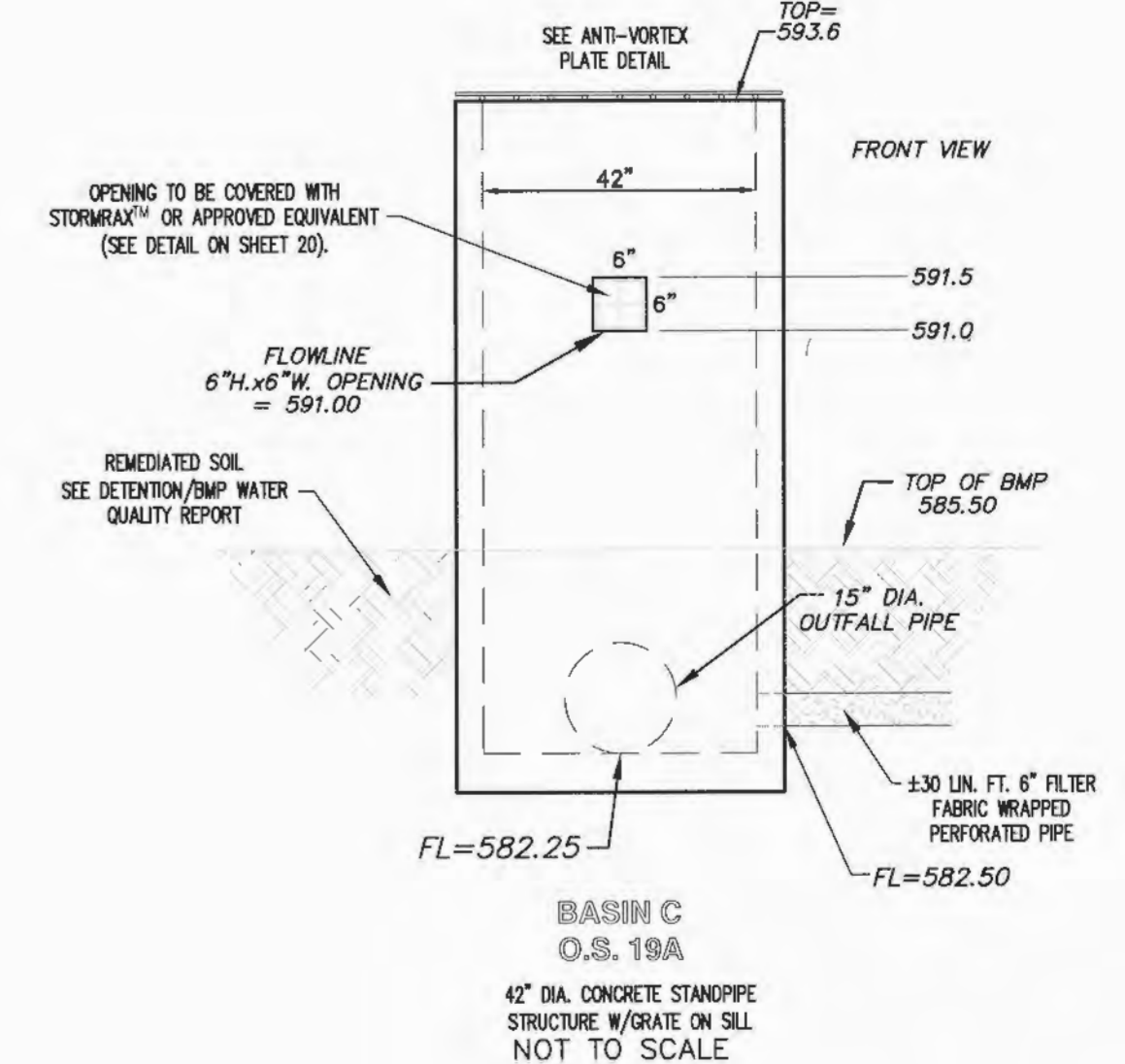
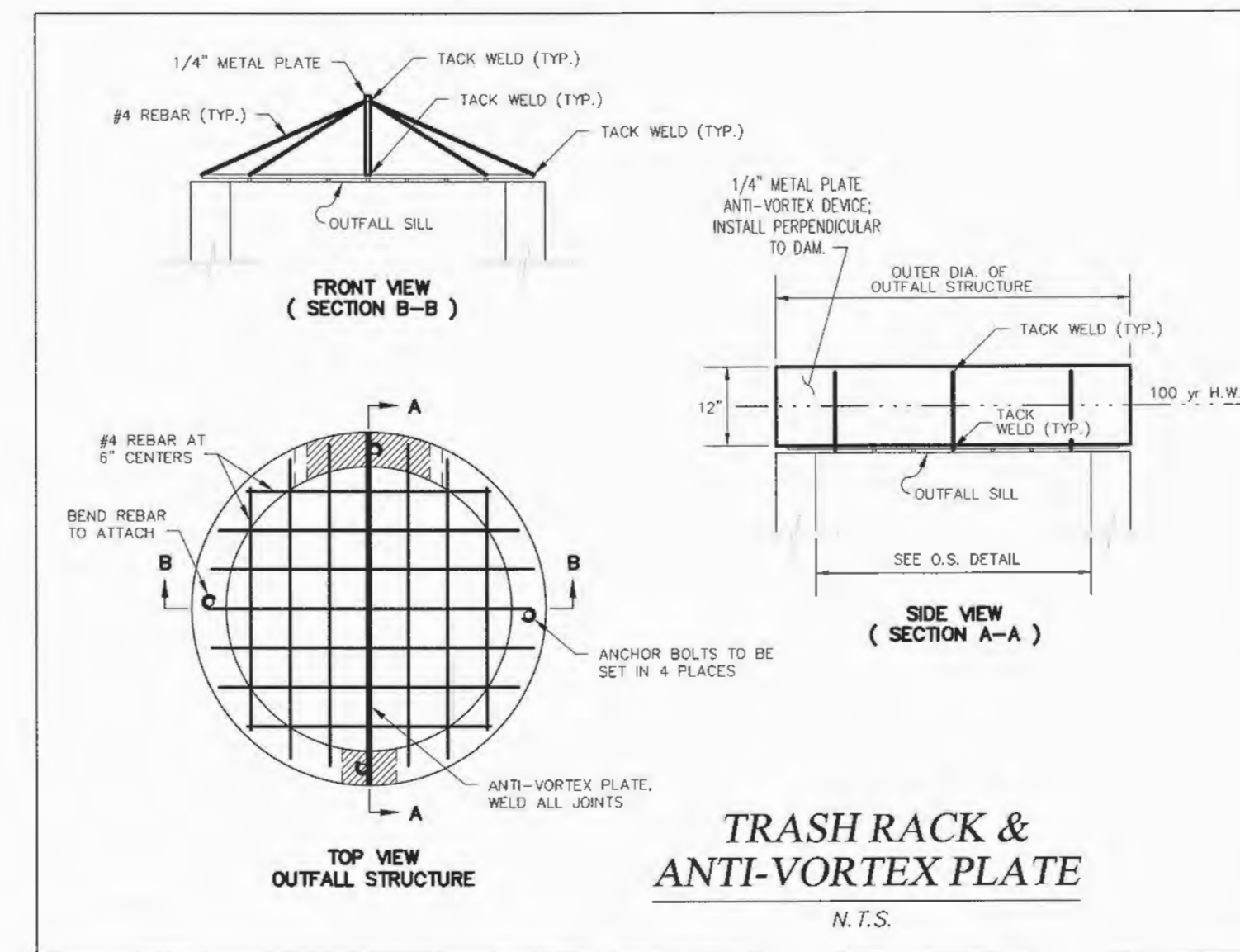
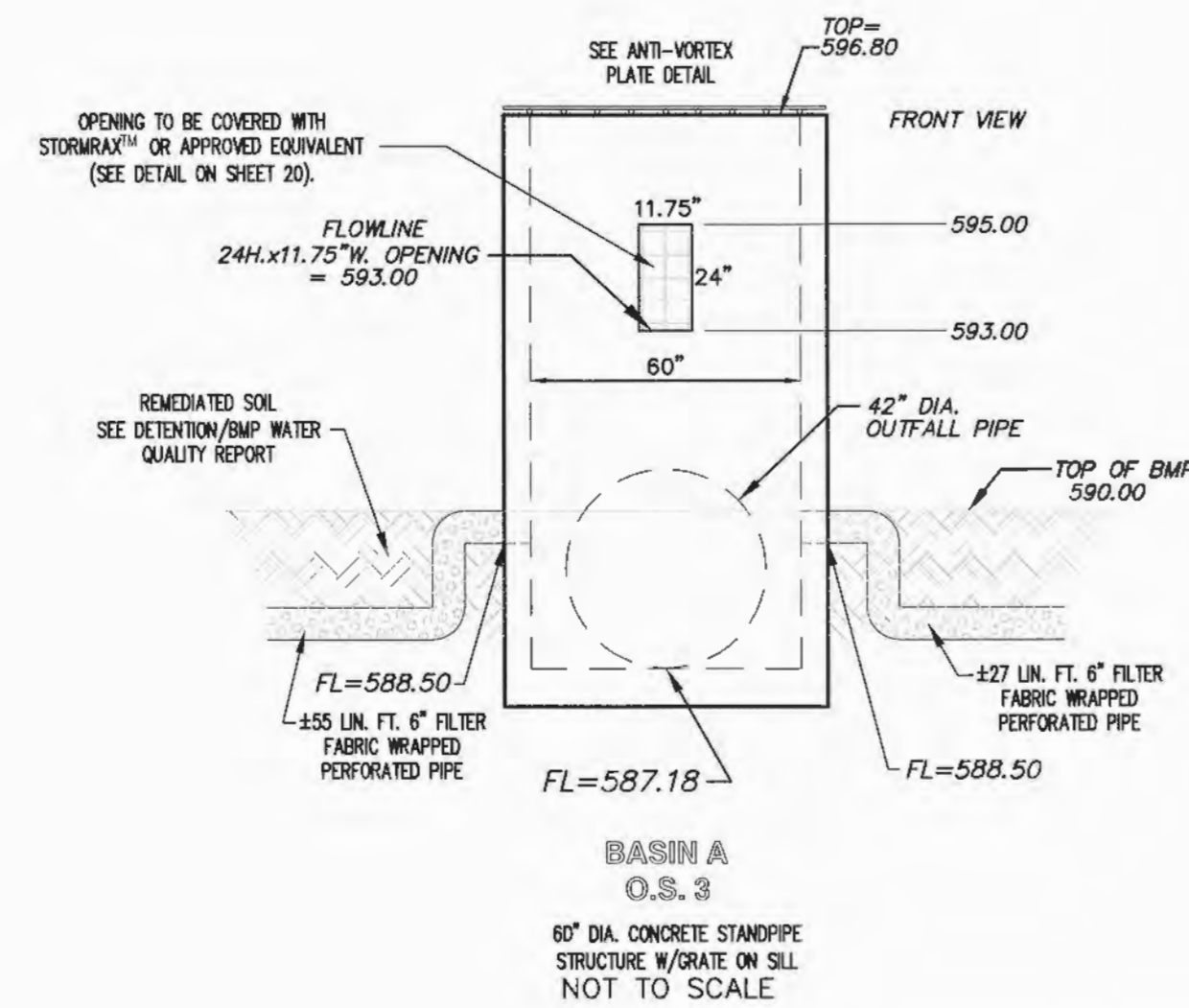
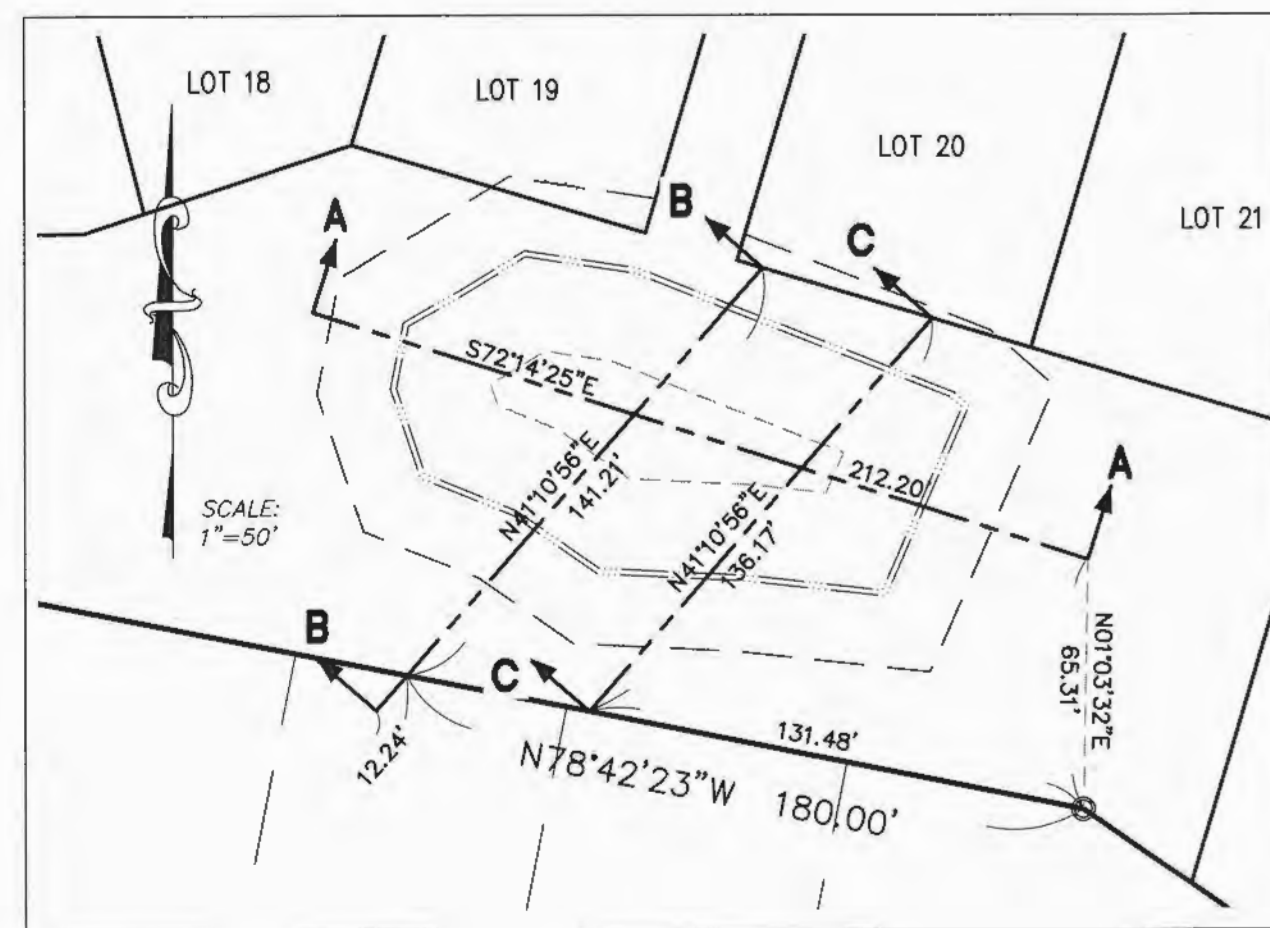
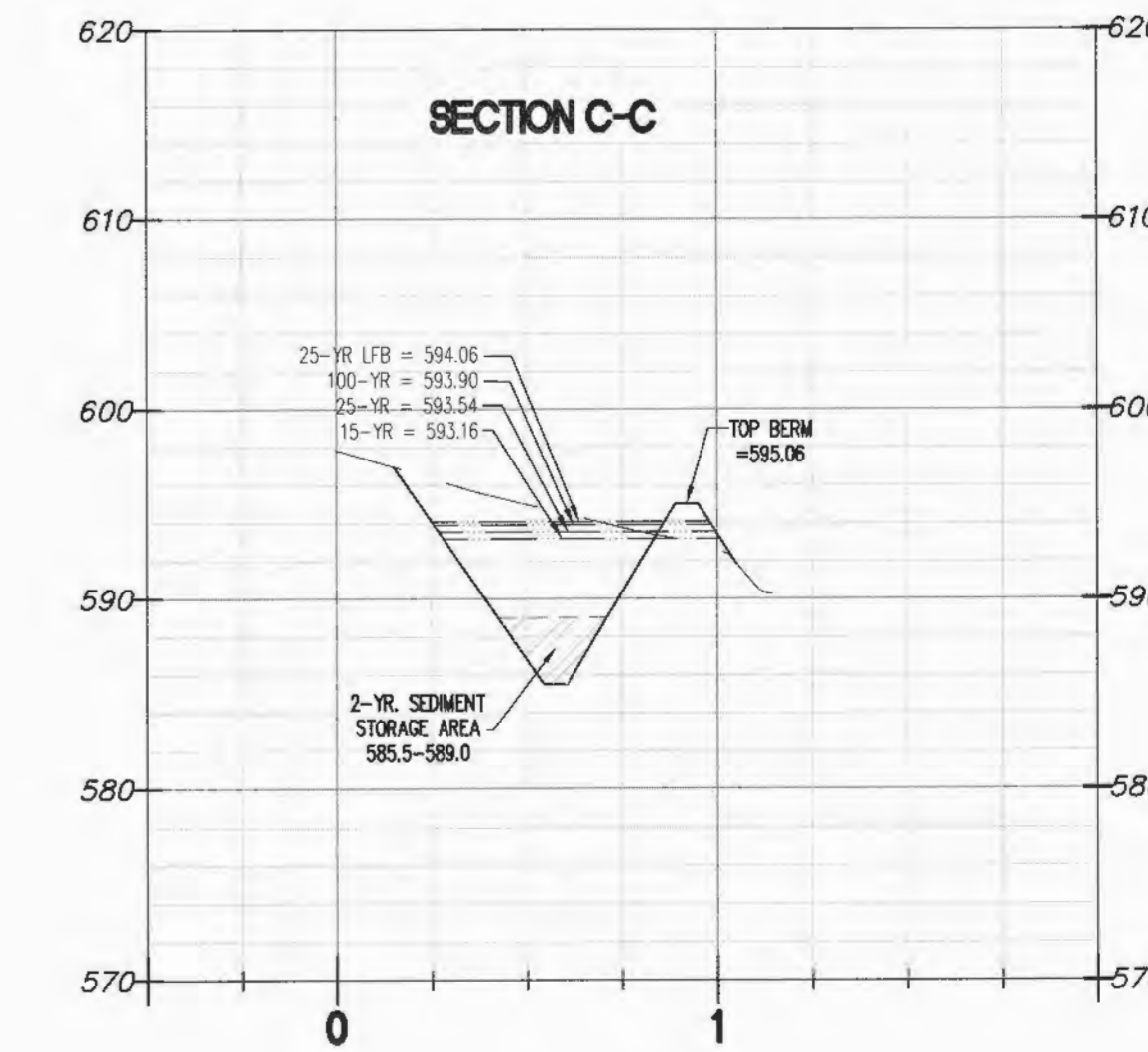
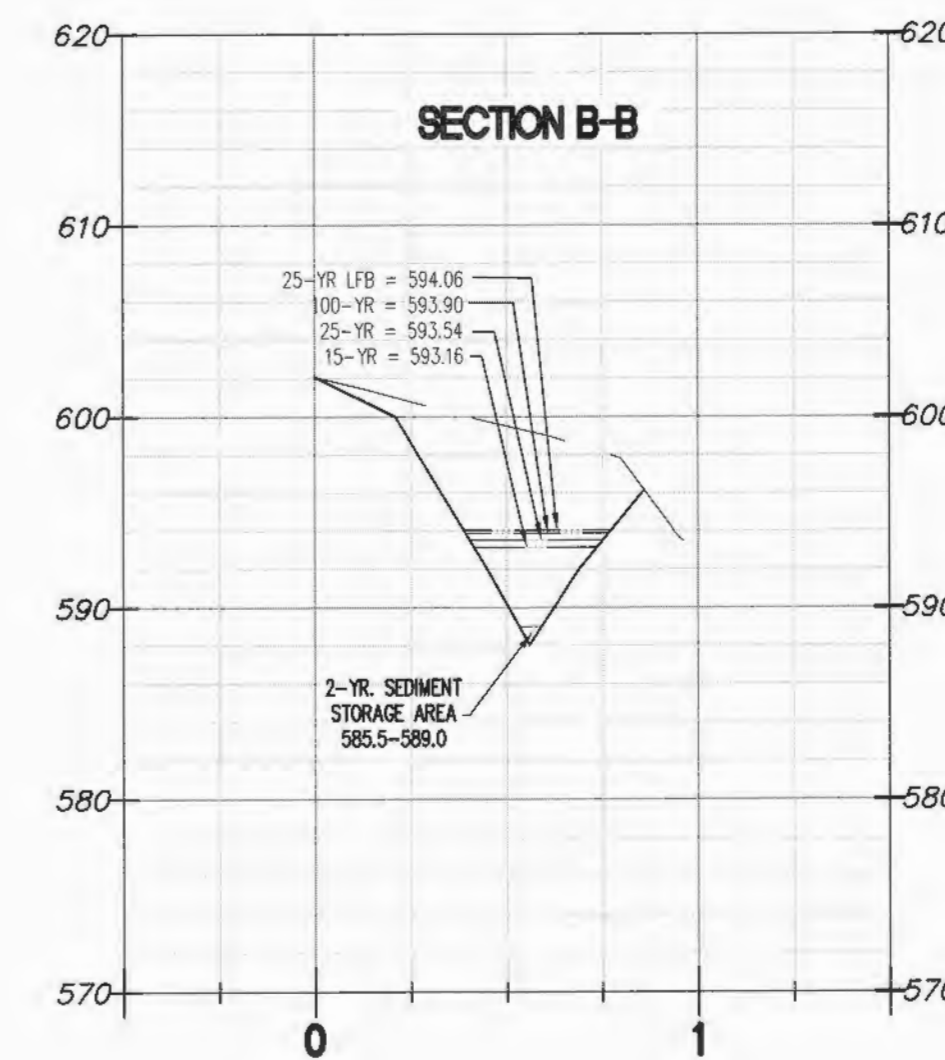
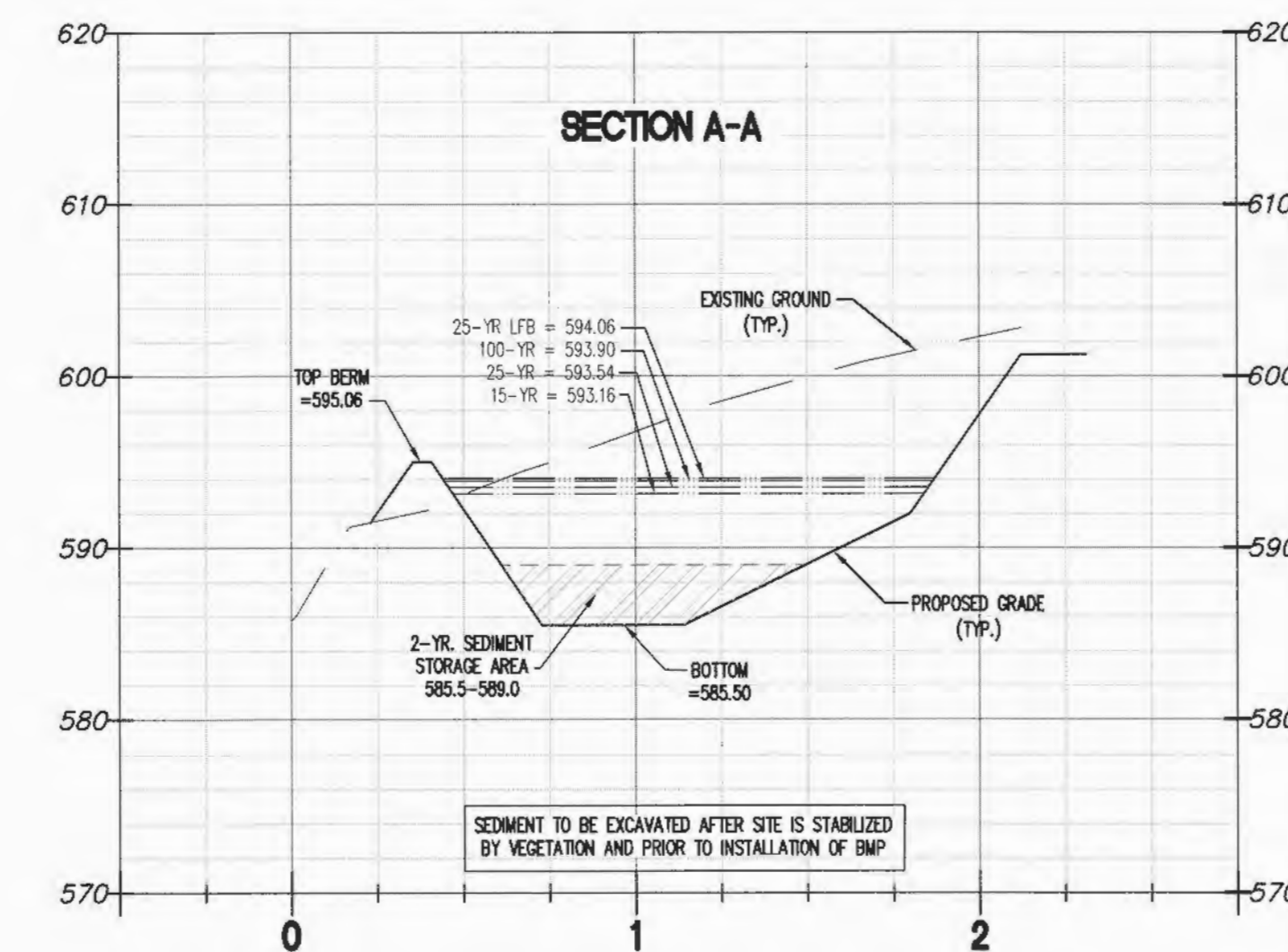


2-YEAR SEDIMENT STORAGE
 6.29 ACRES @ 0.4 (C) = 200 CU.FT./ACRE/YEAR
 200 CU.FT. x 6.29 Ac. x 2 Yrs. = 2,516 CU. FT.



2-YEAR SEDIMENT STORAGE
 4.43 ACRES @ 0.4 (C) = 215 CU.FT./ACRE/YEAR
 215 CU.FT. x 4.43 Ac. x 2 Yrs. = 1,905 CU. FT.



PROJECT TITLE
MUIRFIELD MANOR

PICKETT, RAY & SILVER, INC.
 CIVIL ENGINEERING, LAND SURVEYING,
 AND NATURAL RESOURCES SERVICES
 Blomson
 110 West Adams, Suite 201
 St. Peters, MO 63376
 Phone (636) 397-1211 Fax (636) 397-1104
 www.prs3.com 1-800-708-3818

ENGINEERS' AUTHENTICATION
 THE RESPONSIBILITY FOR PROFESSIONAL ENGINEERING LIABILITY ON THIS PROJECT IS HEREBY LIMITED TO THE SET OF PLANS AUTHENTICATED BY THE SIGNATURE AND DATE HEREON ATTACHED. RESPONSIBILITY IS DISCLAIMED FOR ALL OTHER ENGINEERING PLANS INVOLVED IN THIS PROJECT AND SPECIFICALLY EXCLUDES REVISIONS AFTER THIS DATE UNLESS REAUTHENTICATED.
PICKETT, RAY & SILVER, INC. MO LICENSE #000025



DOUGLAS S. TIDMANN
 PROFESSIONAL ENGINEER LICENSE E-23345

McKELVEY HOMES
 218 Chesterfield Towne Centre
 Chesterfield, Missouri 63005
 Phone: 636-530-6900

Developer / Owner Information
McKELVEY HOMES
 Building A Division of Embury Homes, LLC

P+Z No. 28-13
 City No.
 Page No.