

APPROVED TREE LIST

Common Name	Scientific Name	Description
American Elm	Ulmus americana	Taller than 45 feet
Arbovitae "Green Giant"	Taxodium distichum	45 feet
Austrian Pine	Pinus nigra	Taller than 45 feet
Baldypress	Taxodium distichum	Taller than 45 feet
Birch "Dara Heat"	Betula nigra	Taller than 45 feet
Birch, River	Betula nigra	25 feet
Blackgum	Nyssa sylvatica	45 feet
Coffeetree, Kentucky	Gymnocladus dioica	Taller than 45 feet
Colorado Spruce	Picea pungens	Taller than 45 feet
Corneliancherry Dogwood	Cornus mas	15 feet
Crabapple, Flowering	Malus species	25 feet
Dogwood, Flowering	Cornus florida	15 feet
Eastern Red Cedar	Juniperus virginiana	25 feet
Eastern White Pine	Pinus strobus	Taller than 45 feet
Fraxinifera	Chionochloa virginica	15 feet
Gladiolus	Onilago bitulos	Taller than 45 feet
Goldenrain Tree	Scoleroteria paniculata	25 feet
Hackberry	Celtis occidentalis	Taller than 45 feet
Hawthorn, Green	Crataegus viridis	25 feet
Hawthorn, Washington	Crataegus phaenopynum	25 feet
Honeylocust	Gleditsia triacanthos	Taller than 45 feet
Hophornbeam	Ostrya virginiana	45 feet
Hornbeam American	Carpinus caroliniana	45 feet
Hornbeam, European	Carpinus betulus	45 feet
Japanese Tree Lilac	Syringa reticulata	15 feet
Linden "Redmond"	Tilia americana	Taller than 45 feet
Linden, American (Basswood)	Tilia americana	Taller than 45 feet
Linden, Littleleaf	Tilia cordata	45 feet
Linden, Silver	Tilia tomentosa	Taller than 45 feet
London Plane-tree	Platanus x acerifolia	Taller than 45 feet
Magnolia, Saucer	Magnolia x soulangeana	25 feet
Magnolia, Sweetbay	Magnolia virginiana	15 feet
Maple "Autumn Blaze"	Acer x freemanii	Taller than 45 feet
Maple "Autumn Fantasy"	Acer x freemanii	Taller than 45 feet
Maple "Jeffers Red"	Acer x freemanii	Taller than 45 feet
Maple "Sierra Glen"	Acer x freemanii	Taller than 45 feet
Maple, Amur	Acer ginnala	15 feet
Maple, Black	Acer nigrum	Taller than 45 feet
Maple, Hedge	Acer campestre	25 feet
Maple, Red	Acer rubrum	45 feet
Maple, Sugar	Acer saccharum	45 feet
Maple, Trident	Acer buergerianum	45 feet
Northern Catalpa	Catalpa speciosa	Taller than 45 feet
Norway Spruce	Picea abies	Taller than 45 feet
Oak, Bar	Quercus macrocarpa	Taller than 45 feet
Oak, English	Quercus robur	Taller than 45 feet
Oak, Northern Red	Quercus rubra	Taller than 45 feet
Oak, Pin	Quercus palustris	Taller than 45 feet
Oak, Shingle	Quercus imbricaria	Taller than 45 feet

Landscape Notes:

- A minimum of one (1) tree shall be located in the front yard of every lot and corner lots shall be provided a minimum of two (2) trees, one for each lot upon which the lot has frontage. All tree locations shown are approximate and actual final locations may vary based upon completion of the detailed engineering design of required improvements, i.e. utilities, driveways, sewers, street lights, etc. Final tree locations however shall comply with the locational standards contained within Sections 402.110 and 402.130 noted below.
- Location Criteria:
 - No trees shall be located within the right-of-way of the Interior Minor Residential/Local Access Road.
 - No trees shall be planted closer than fifteen (15) feet to the back of any curb.
 - No trees shall be planted within five (5) feet of an utility or lateral line.
 - No trees shall be planted within twenty-five (25) feet of a street light.
 - No trees shall be planted within twenty-five (25) feet of traffic control or street signs.
 - No trees shall be planted within ten (10) feet of stormwater inlets or manholes.
 - At street intersections, no tree or shrub shall be placed within the triangular area formed by the right-of-way lines and a line connecting them at points twenty-five (25) feet from their point of intersection.
- Plantings shall be installed in a manner consistent with positive surface drainage. Trees planted around stormwater detention basins shall be arranged so as not to block access to the basins for maintenance.
- Per Section 402.100 no Bufferland plantings are required.

NOTE: IF TREE SELECTED HAS A DESCRIPTION (MATURE HEIGHT) "TALLER THAN 45 FEET", IT MUST BE A MINIMUM OF 20' FROM SIDEWALK.

☼ = APPROXIMATE LOCATION OF STREET TREE. EXACT LOCATION TO BE DETERMINED IN FIELD.

Planting Schedule:

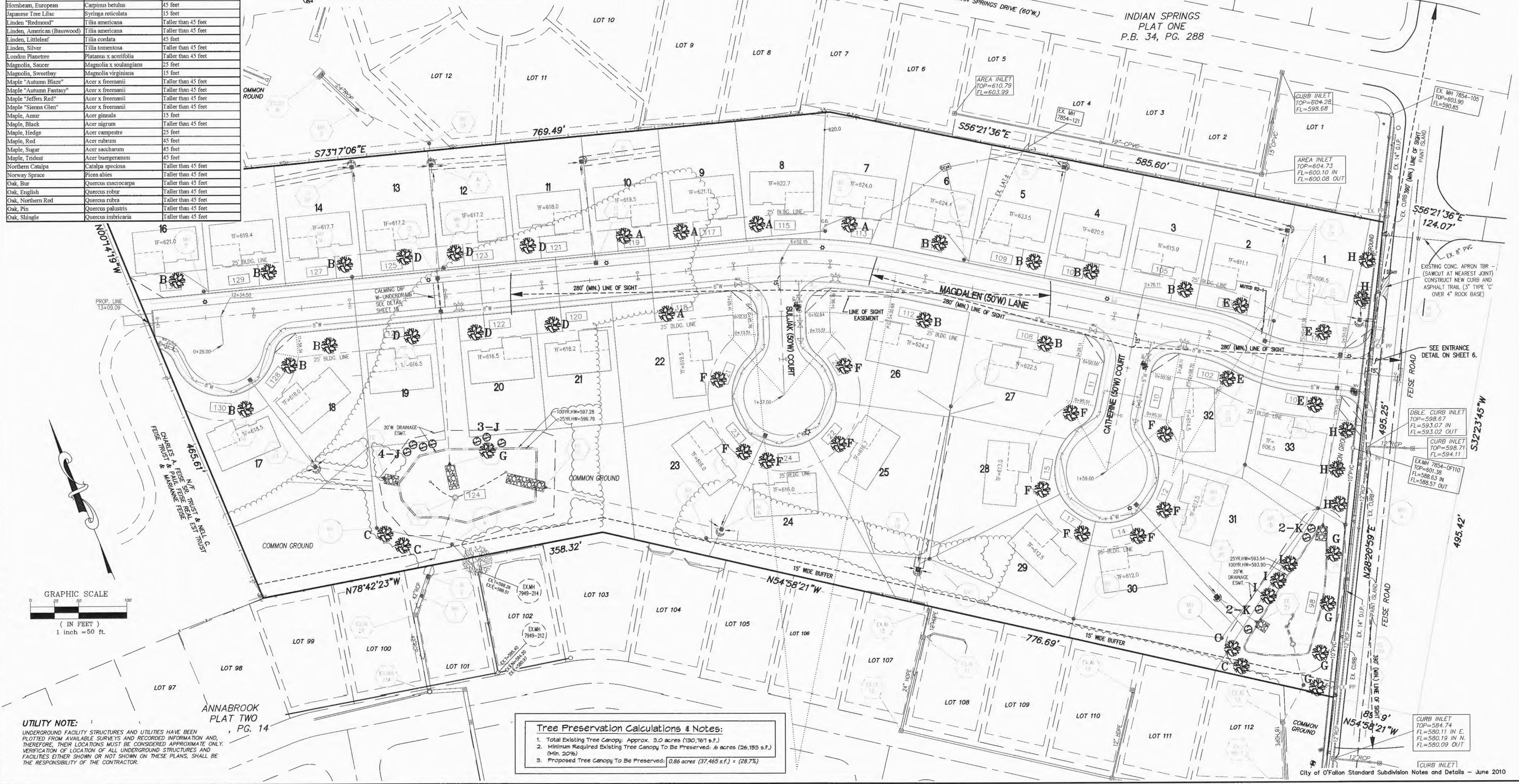
Key	Quan.	Botanical Name	Common Name	Size	MATURE HEIGHT
A	5	Acer rubrum	Red Sunset Maple	2" cal.	45'
B	12	Acer saccharum	Sugar Maple	2" cal.	45'
C	4	Betula nigra	River Birch	2" cal.	25' multi-trunked
D	6	Quercus bicolor	Swamp White Oak	2" cal.	<45'
E	4	Quercus rubra	Red Oak	2" cal.	<45'
F	11	Nyssa sylvatica	Black Gum	2" cal.	45'
G	5	Cercis canadensis	Eastern Redbud	4" min. ht.	25' upright, single trunk
H	5	Cornus Florida	Cherokee Princess Dogwood	4" min. ht.	25' single trunk
I	3	Crataegus phaenopynum	Washington Hawthorn	4" min. ht.	30' single trunk
J	7	Abies concolor	White Fir	6" min. ht.	<45'
K	11	Pinus strobus	White Pine	6" min. ht.	<45'

Trees may not be planted closer to the centerline of an overhead power line as listed below:

Maximum Mature Tree Height (Feet)	Minimum Distance From Centerline (Feet)
<15	No minimum
15-24	15
25-45	35
>45	45

To reduce potential damage to sidewalks the City recommends the following setback:

Maximum Mature Tree Height (Feet)	Minimum Distance From Sidewalk (Feet)
<15	5
15-25	10
26-45	15
45	20



Tree Preservation Calculations & Notes:

- Total Existing Tree Canopy: Approx. 3.0 acres (130,161 s.f.)
- Minimum Required Existing Tree Canopy To Be Preserved: .6 acres (26,193 s.f.) (Min. 20%)
- Proposed Tree Canopy To Be Preserved: 0.86 acres (37,465 s.f.) = (28.7%)

PROJECT TITLE

MUIRFIELD MANOR

PRR No. 13033MCHO00R

PICKETT, RAY & SILVER, INC.

CIVIL ENGINEERING, LAND SURVEYING,
AND NATURAL RESOURCES SERVICES

Branston
110 West Adams, Suite 201
St. Peters, MO 65076

Phone (636) 397-1104
Fax (636) 397-1104
www.prs.com 1-800-708-3919

ENGINEER'S AUTHENTICATION

THE RESPONSIBILITY FOR PROFESSIONAL ENGINEERING LIABILITY ON THIS PROJECT IS HEREBY LIMITED TO THE SET OF PLANS AUTHENTICATED BY THE SEAL, SIGNATURE, AND DATE REPRODUCED ATTACHED. RESPONSIBILITY IS DISCLAIMED FOR ALL OTHER ENGINEERING PLANS INVOLVED IN THIS PROJECT AND SPECIALLY EXCLUDES REVISIONS AFTER THIS DATE UNLESS REAUTHENTICATED.

PICKETT, RAY & SILVER, INC. MO LICENSE #000035

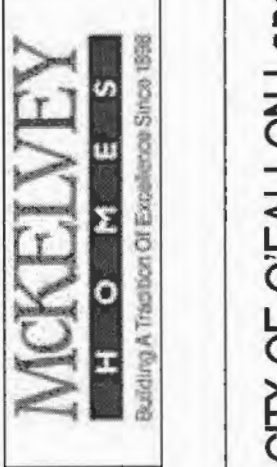
Douglas S. Tiemann
1/21/16

DOUGLAS S. TIEMANN
PROFESSIONAL ENGINEER LICENSE E-23346

McKELVEY HOMES

218 Chesterfield Towne Centre
Chesterfield, Missouri 63005
Phone: 636-530-6900

Developer / Owner Information



CITY OF O'FALLON Landscape Plan

P+Z No. 28-13

City No.

Page No.

14 of 27