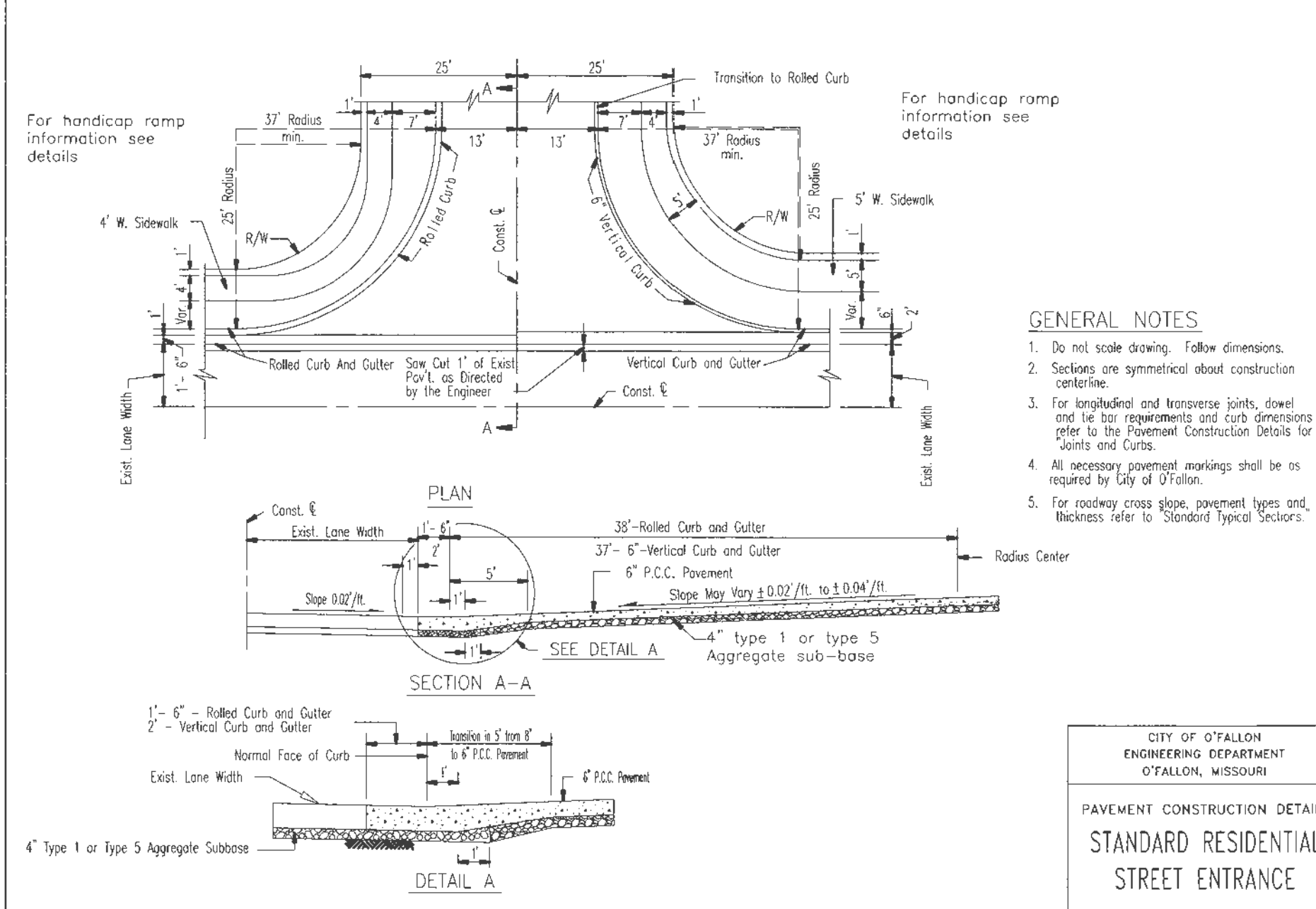


	ROW Width	Pavement Width	Lane Width	No. of Drive Lanes	Utility Easement	Design Speed
Minor Arterial	84	60	12	5	10	40
Collector	60	39	12	3	10	35
Residential Collector	56	32**	N/A	2	10	25
Minor Residential Local Access	50	26	N/A	2	10	25*

Notes: * = Can be varied with City Engineer's approval
 ** = Detail to match minor residential street with wider pavement
 - these requirements may be varied by other City ordinances
 - these standards are minimum standards
 - Parkway options can be provided as indicated above

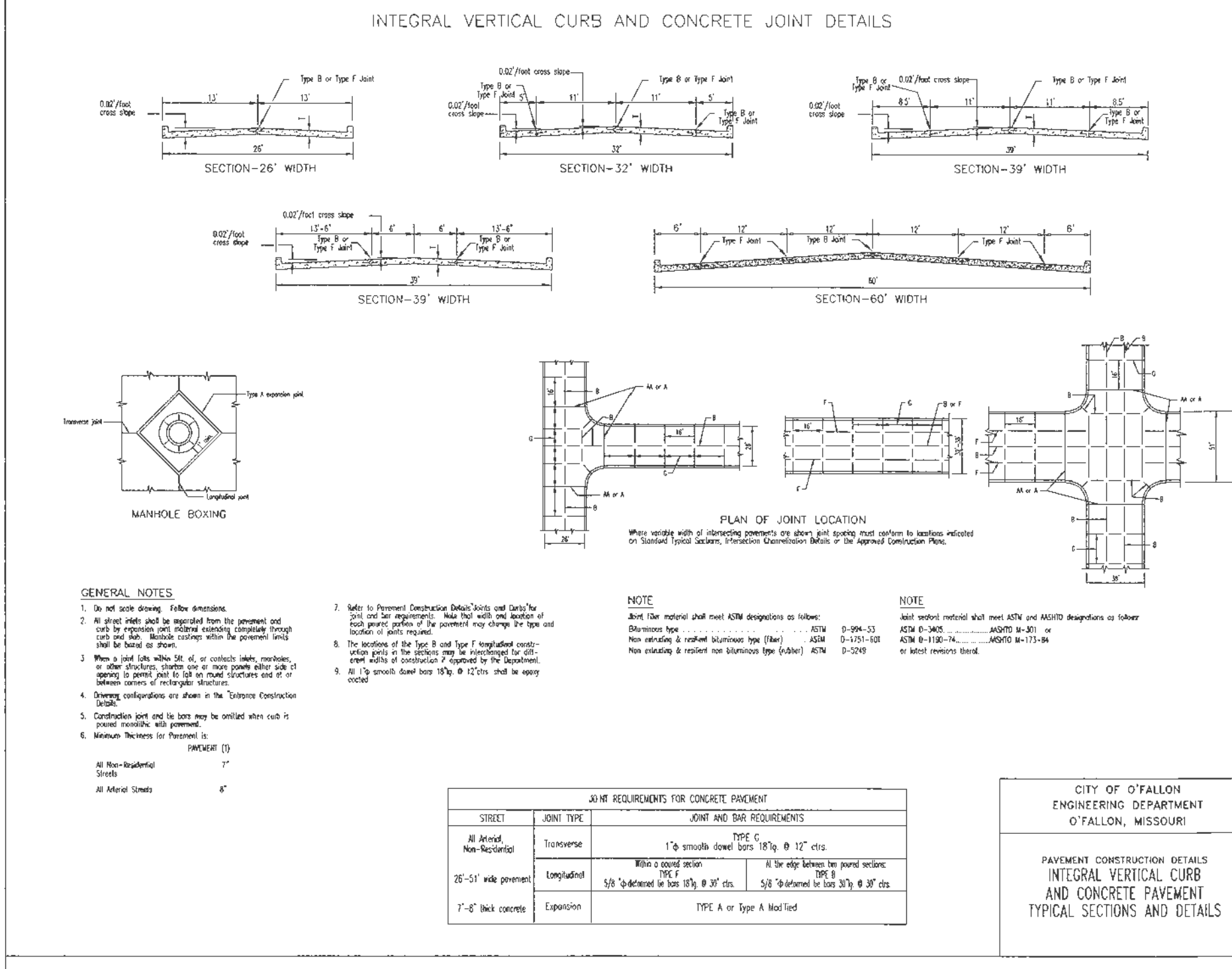
Designer will provide roadway cross section and joint locations in a separate detail drawing.

CITY OF O'FALLON
 ENGINEERING DEPARTMENT
 O'FALLON, MISSOURI
 Typical Pavement Design
 SECTION NO. 405.370



GENERAL NOTES
 1. Do not scale drawing. Follow dimensions.
 2. Sections are symmetrical about construction centerline.
 3. For longitudinal and transverse joints, dowel and tie bar requirements and curb dimensions refer to the Pavement Construction Details for Joints and Curb.
 4. All necessary pavement markings shall be as required by City of O'Fallon.
 5. For roadway cross slope, pavement types and thickness refer to Standard Typical Sections.

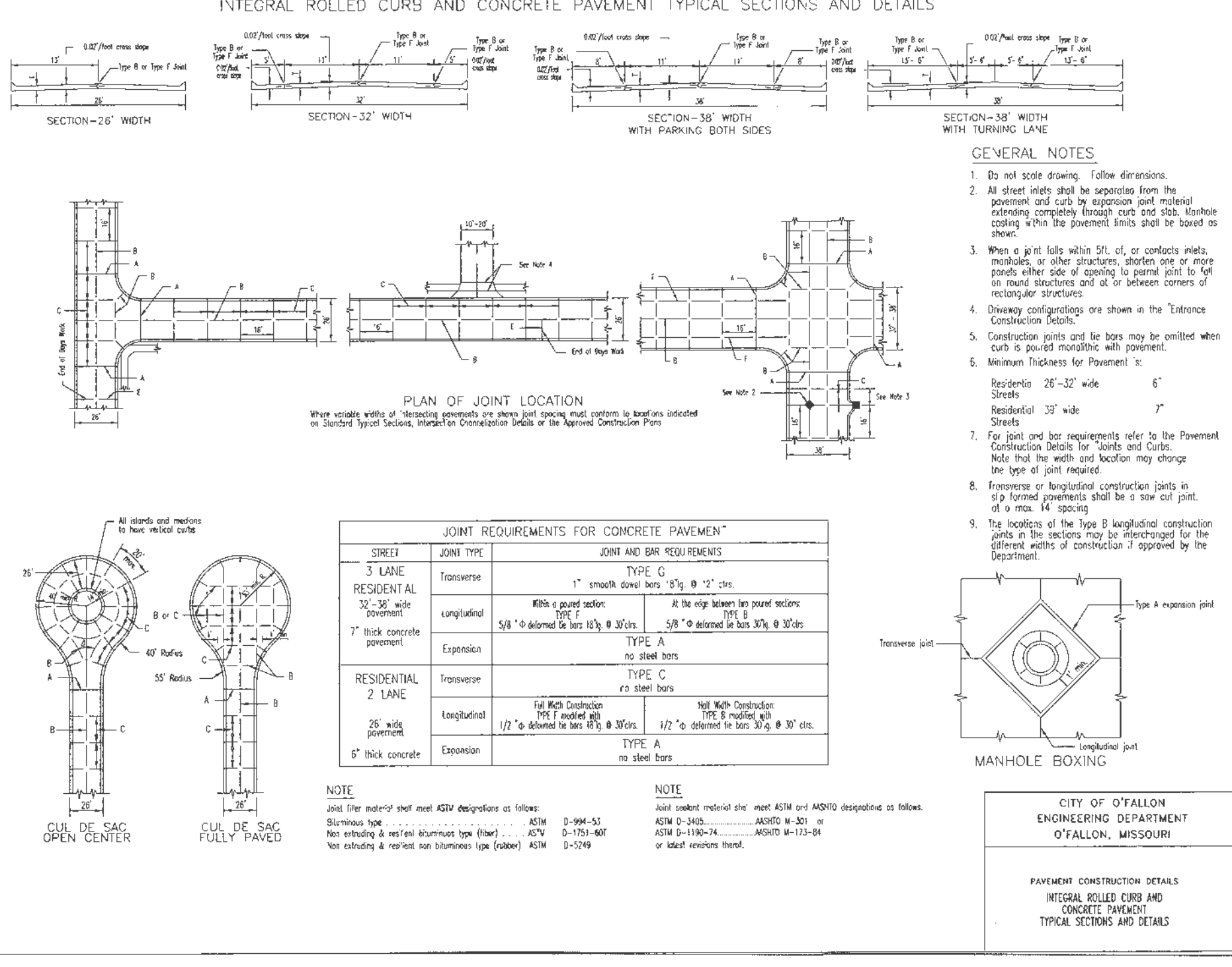
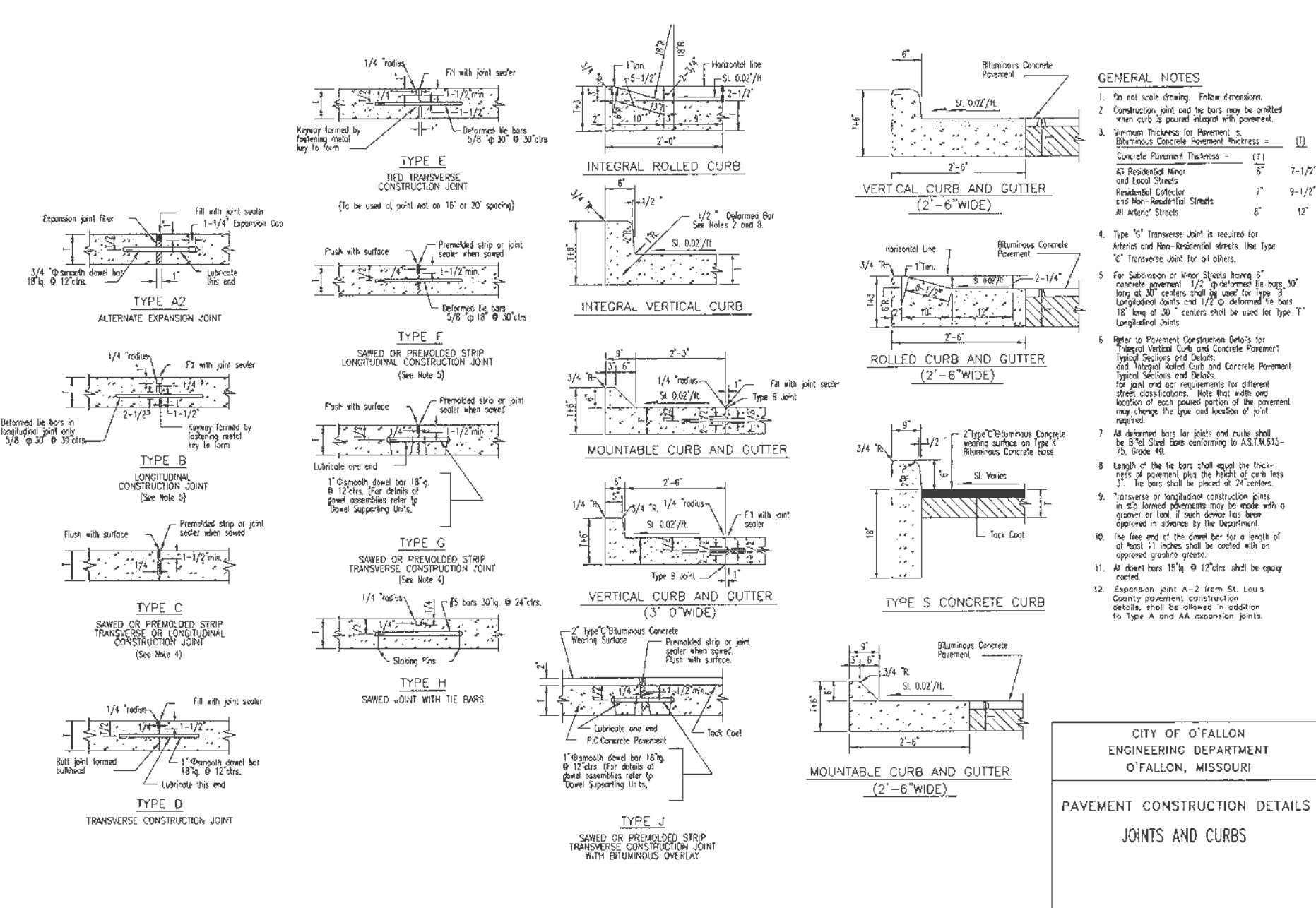
CITY OF O'FALLON
 ENGINEERING DEPARTMENT
 O'FALLON, MISSOURI
 PAVEMENT CONSTRUCTION DETAILS
 STANDARD RESIDENTIAL STREET ENTRANCE



GENERAL NOTES
 1. Do not scale drawing. Follow dimensions.
 2. All joint seals shall be applied from the pavement and shall extend into the concrete to a depth of 1/2 inch.
 3. When a joint seal is used, it shall be applied to the concrete surface and shall extend into the concrete to a depth of 1/2 inch.
 4. Sealing information is shown in the "Traffic Retention Details".
 5. Construction joint and tie bars shall be installed with a 45-degree angle to the pavement surface.
 6. Minimum Reinforcement to Pavement is 1/2 inch diameter steel @ 12 inches on center.

JOINT TYPE	JOINT REQUIREMENTS
RESIDENTIAL	TYPE C 1/2" smooth dowel bars @ 12" c/c
RESIDENTIAL	TYPE D 1/2" smooth dowel bars @ 12" c/c
RESIDENTIAL	TYPE E 1/2" smooth dowel bars @ 12" c/c
RESIDENTIAL	TYPE F 1/2" smooth dowel bars @ 12" c/c

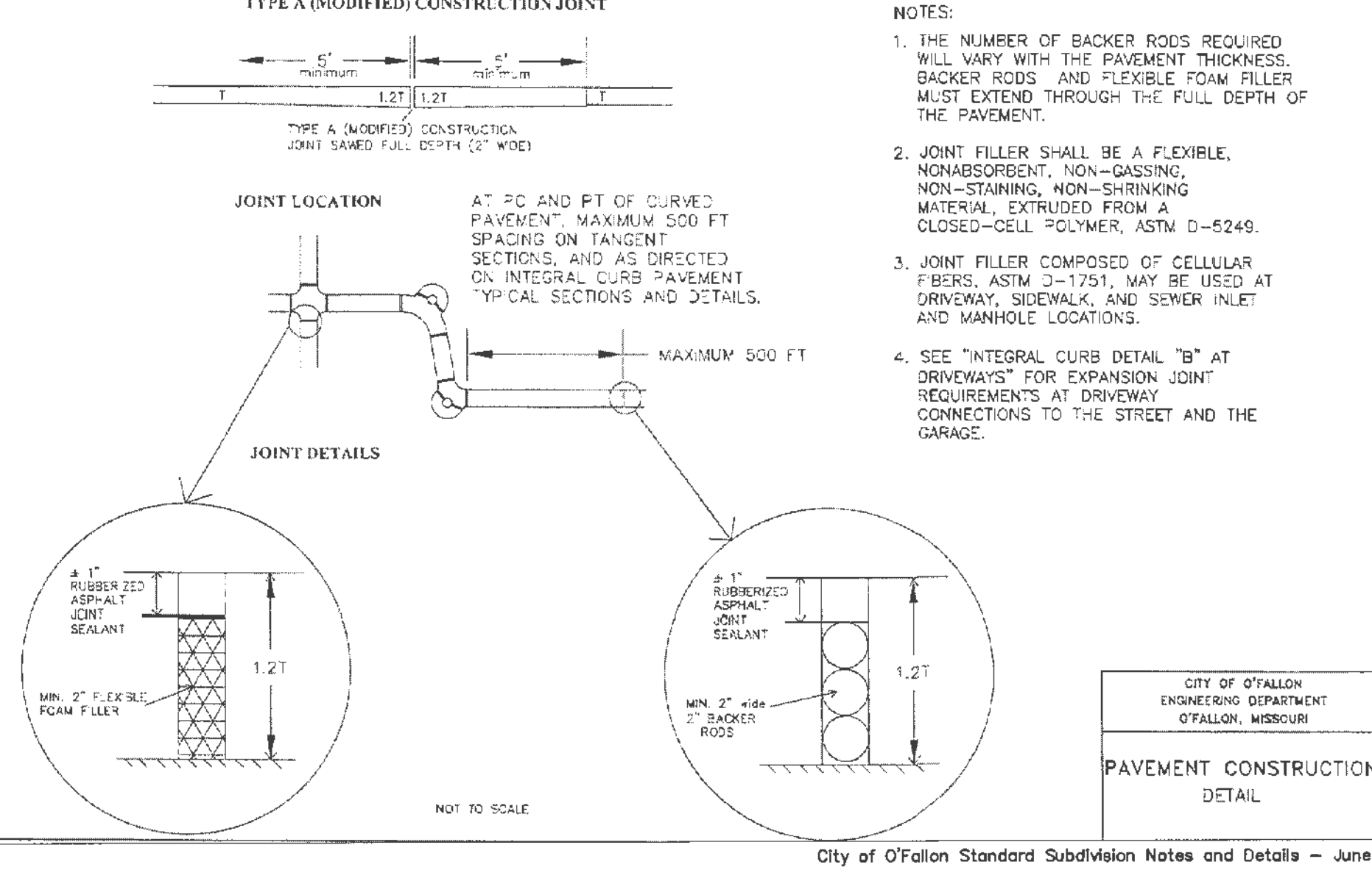
CITY OF O'FALLON
 ENGINEERING DEPARTMENT
 O'FALLON, MISSOURI
 PAVEMENT CONSTRUCTION DETAILS
 INTEGRAL VERTICAL CURB AND CONCRETE JOINT TYPICAL SECTIONS AND DETAILS



GENERAL NOTES
 1. Do not scale drawing. Follow dimensions.
 2. All joint seals shall be applied from the pavement and shall extend into the concrete to a depth of 1/2 inch.
 3. When a joint seal is used, it shall be applied to the concrete surface and shall extend into the concrete to a depth of 1/2 inch.
 4. Sealing information is shown in the "Traffic Retention Details".
 5. Construction joint and tie bars shall be installed with a 45-degree angle to the pavement surface.
 6. Minimum Reinforcement to Pavement is 1/2 inch diameter steel @ 12 inches on center.

JOINT TYPE	JOINT REQUIREMENTS
RESIDENTIAL	TYPE A 1/2" smooth dowel bars @ 12" c/c
RESIDENTIAL	TYPE B 1/2" smooth dowel bars @ 12" c/c
RESIDENTIAL	TYPE C 1/2" smooth dowel bars @ 12" c/c
RESIDENTIAL	TYPE D 1/2" smooth dowel bars @ 12" c/c
RESIDENTIAL	TYPE E 1/2" smooth dowel bars @ 12" c/c
RESIDENTIAL	TYPE F 1/2" smooth dowel bars @ 12" c/c
RESIDENTIAL	TYPE G 1/2" smooth dowel bars @ 12" c/c
RESIDENTIAL	TYPE H 1/2" smooth dowel bars @ 12" c/c
RESIDENTIAL	TYPE I 1/2" smooth dowel bars @ 12" c/c
RESIDENTIAL	TYPE J 1/2" smooth dowel bars @ 12" c/c
RESIDENTIAL	TYPE K 1/2" smooth dowel bars @ 12" c/c
RESIDENTIAL	TYPE L 1/2" smooth dowel bars @ 12" c/c
RESIDENTIAL	TYPE M 1/2" smooth dowel bars @ 12" c/c
RESIDENTIAL	TYPE N 1/2" smooth dowel bars @ 12" c/c
RESIDENTIAL	TYPE O 1/2" smooth dowel bars @ 12" c/c
RESIDENTIAL	TYPE P 1/2" smooth dowel bars @ 12" c/c
RESIDENTIAL	TYPE Q 1/2" smooth dowel bars @ 12" c/c
RESIDENTIAL	TYPE R 1/2" smooth dowel bars @ 12" c/c
RESIDENTIAL	TYPE S 1/2" smooth dowel bars @ 12" c/c
RESIDENTIAL	TYPE T 1/2" smooth dowel bars @ 12" c/c
RESIDENTIAL	TYPE U 1/2" smooth dowel bars @ 12" c/c
RESIDENTIAL	TYPE V 1/2" smooth dowel bars @ 12" c/c
RESIDENTIAL	TYPE W 1/2" smooth dowel bars @ 12" c/c
RESIDENTIAL	TYPE X 1/2" smooth dowel bars @ 12" c/c
RESIDENTIAL	TYPE Y 1/2" smooth dowel bars @ 12" c/c
RESIDENTIAL	TYPE Z 1/2" smooth dowel bars @ 12" c/c

CITY OF O'FALLON
 ENGINEERING DEPARTMENT
 O'FALLON, MISSOURI
 PAVEMENT CONSTRUCTION DETAILS
 INTEGRAL ROLLED CURB AND CONCRETE JOINT TYPICAL SECTIONS AND DETAILS



GENERAL NOTES
 1. Do not scale drawing. Follow dimensions.
 2. All joint seals shall be applied from the pavement and shall extend into the concrete to a depth of 1/2 inch.
 3. When a joint seal is used, it shall be applied to the concrete surface and shall extend into the concrete to a depth of 1/2 inch.
 4. Sealing information is shown in the "Traffic Retention Details".
 5. Construction joint and tie bars shall be installed with a 45-degree angle to the pavement surface.
 6. Minimum Reinforcement to Pavement is 1/2 inch diameter steel @ 12 inches on center.

JOINT TYPE	JOINT REQUIREMENTS
RESIDENTIAL	TYPE A 1/2" smooth dowel bars @ 12" c/c
RESIDENTIAL	TYPE B 1/2" smooth dowel bars @ 12" c/c
RESIDENTIAL	TYPE C 1/2" smooth dowel bars @ 12" c/c
RESIDENTIAL	TYPE D 1/2" smooth dowel bars @ 12" c/c
RESIDENTIAL	TYPE E 1/2" smooth dowel bars @ 12" c/c
RESIDENTIAL	TYPE F 1/2" smooth dowel bars @ 12" c/c
RESIDENTIAL	TYPE G 1/2" smooth dowel bars @ 12" c/c
RESIDENTIAL	TYPE H 1/2" smooth dowel bars @ 12" c/c
RESIDENTIAL	TYPE I 1/2" smooth dowel bars @ 12" c/c
RESIDENTIAL	TYPE J 1/2" smooth dowel bars @ 12" c/c
RESIDENTIAL	TYPE K 1/2" smooth dowel bars @ 12" c/c
RESIDENTIAL	TYPE L 1/2" smooth dowel bars @ 12" c/c
RESIDENTIAL	TYPE M 1/2" smooth dowel bars @ 12" c/c
RESIDENTIAL	TYPE N 1/2" smooth dowel bars @ 12" c/c
RESIDENTIAL	TYPE O 1/2" smooth dowel bars @ 12" c/c
RESIDENTIAL	TYPE P 1/2" smooth dowel bars @ 12" c/c
RESIDENTIAL	TYPE Q 1/2" smooth dowel bars @ 12" c/c
RESIDENTIAL	TYPE R 1/2" smooth dowel bars @ 12" c/c
RESIDENTIAL	TYPE S 1/2" smooth dowel bars @ 12" c/c
RESIDENTIAL	TYPE T 1/2" smooth dowel bars @ 12" c/c
RESIDENTIAL	TYPE U 1/2" smooth dowel bars @ 12" c/c
RESIDENTIAL	TYPE V 1/2" smooth dowel bars @ 12" c/c
RESIDENTIAL	TYPE W 1/2" smooth dowel bars @ 12" c/c
RESIDENTIAL	TYPE X 1/2" smooth dowel bars @ 12" c/c
RESIDENTIAL	TYPE Y 1/2" smooth dowel bars @ 12" c/c
RESIDENTIAL	TYPE Z 1/2" smooth dowel bars @ 12" c/c

CITY OF O'FALLON
 ENGINEERING DEPARTMENT
 O'FALLON, MISSOURI
 PAVEMENT CONSTRUCTION
 DETAIL
 SECTION NO. 505.050

NOTE: ALL NON-REINFORCED CONCRETE SHALL BE 4,000 p.s.i. AT 28 DAYS.

PROJECT TITLE
MCKELVEY HOMES
 218 Chesterfield Towne Centre
 Chesterfield, Missouri 63005
 Phone: 636-630-6900

Developer / Owner Information
MCKELVEY HOMES
 218 Chesterfield Towne Centre
 Chesterfield, Missouri 63005
 Phone: 636-630-6900

ENGINEERS AUTHENTICATION
 THE RESPONSIBILITY FOR PROFESSIONAL ENGINEERING LIABILITY ON THIS PROJECT IS SOLELY LIMITED TO THE SET OF PLANS AUTHENTICATED BY THE SEAL, SIGNATURE, AND DATE HEREON ATTACHED. RESPONSIBILITY IS DISCLAIMED FOR ALL OTHER ENGINEERING PLANS ENVELOPED IN THIS PROJECT AND SPECIFICALLY DESIGNATED HEREON AFTER THIS DATE UNLESS REAUTHENTICATED.

Douglas S. Remann
 DOUGLAS S. REMANN
 PROFESSIONAL ENGINEER LICENSE E-23346

PICKETT, RAY & SILVER, INC.
 CIVIL ENGINEERING, LAND SURVEYING,
 AND NATURAL RESOURCES SERVICES
 Branson, Missouri 64604
 St. Peters, Missouri 65050
 2215 Highway 138, Suite 201
 Branson, MO 64604
 Phone (636) 397-1211 Fax (636) 397-1104
 www.prs3.com 1-800-708-3918

P-RS No. 28-13
 City No.
 Page No.
 16 of 27
 City of O'Fallon Standard Subdivision Notes and Details - June 2010