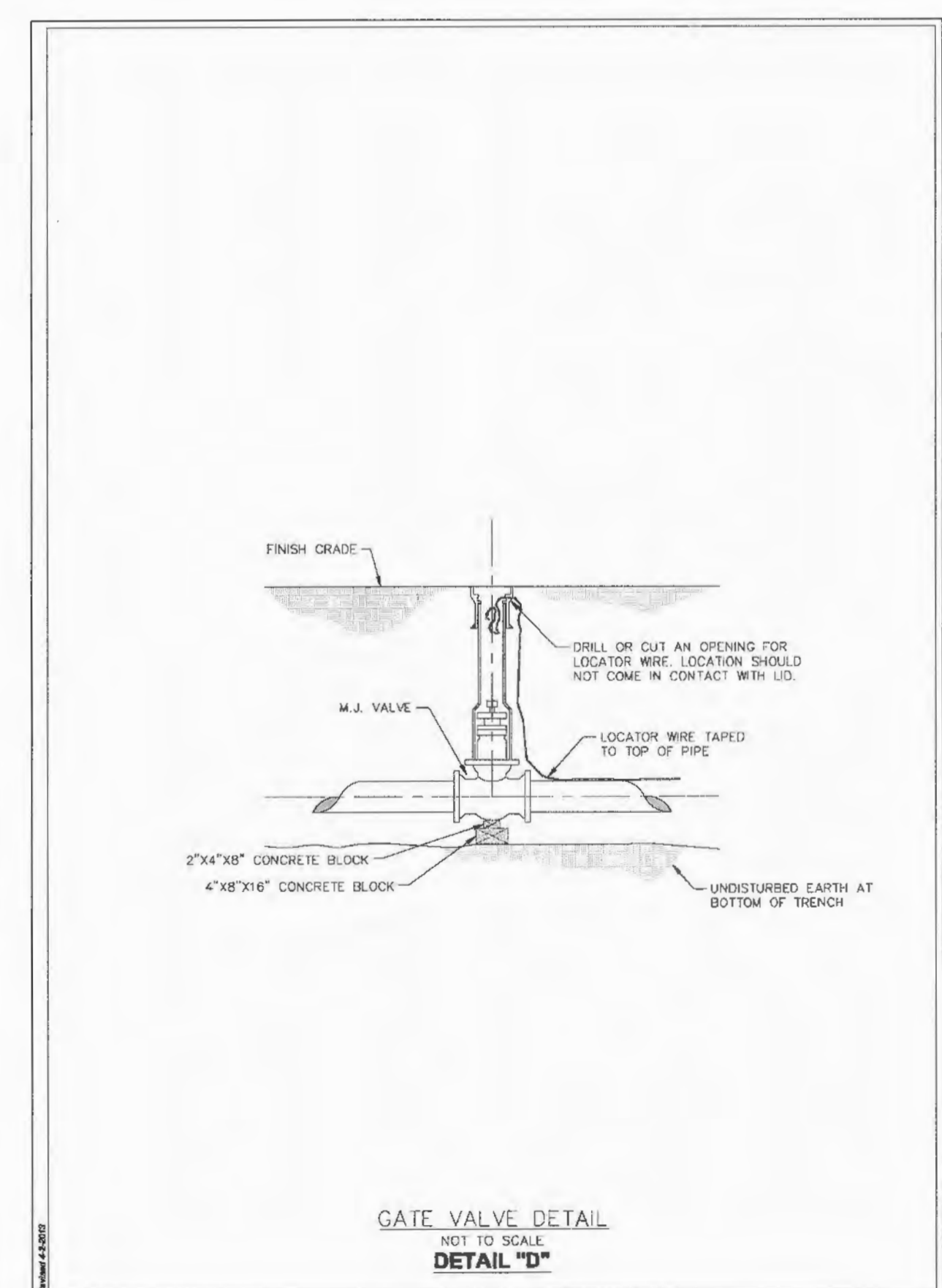
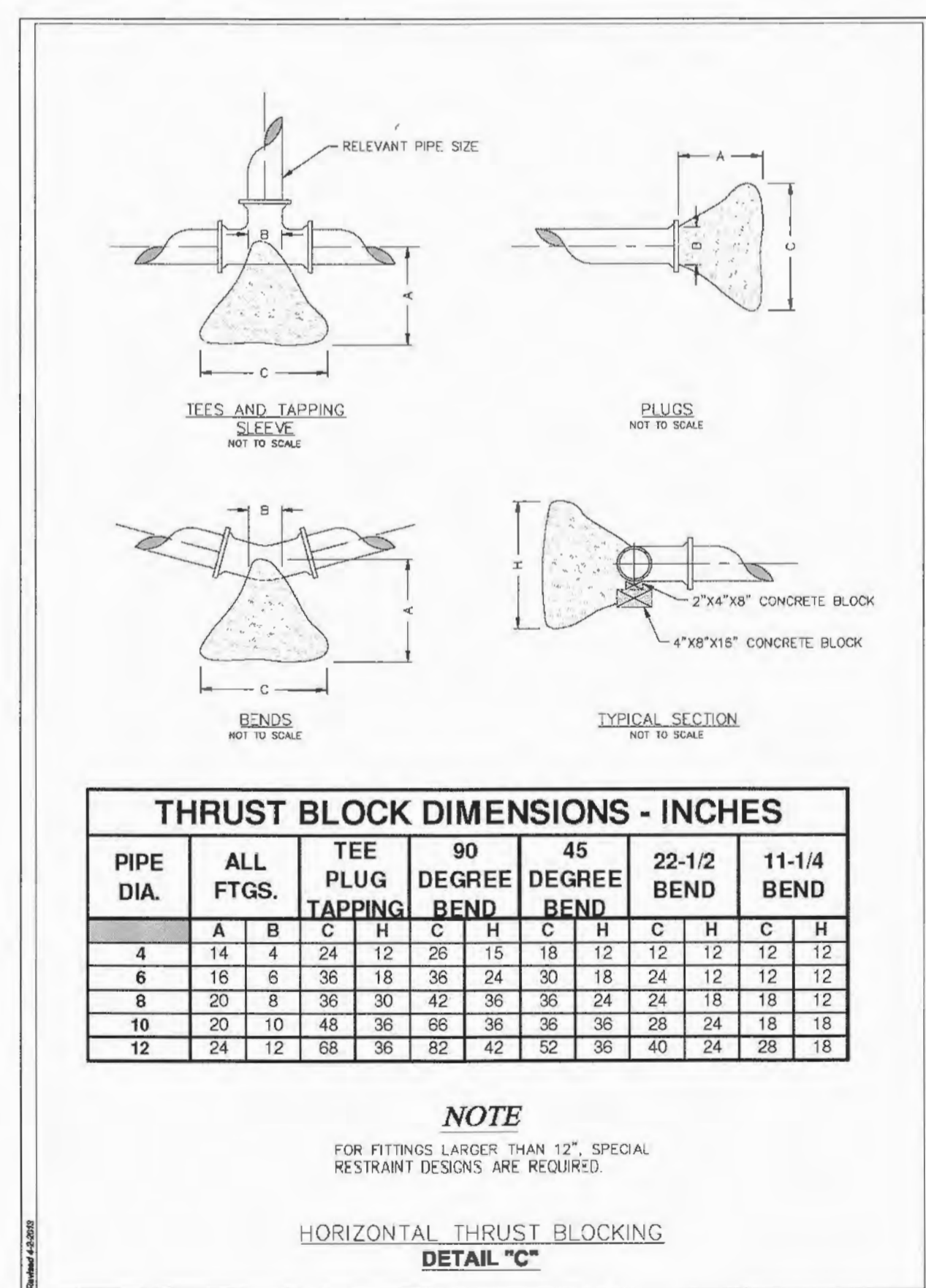
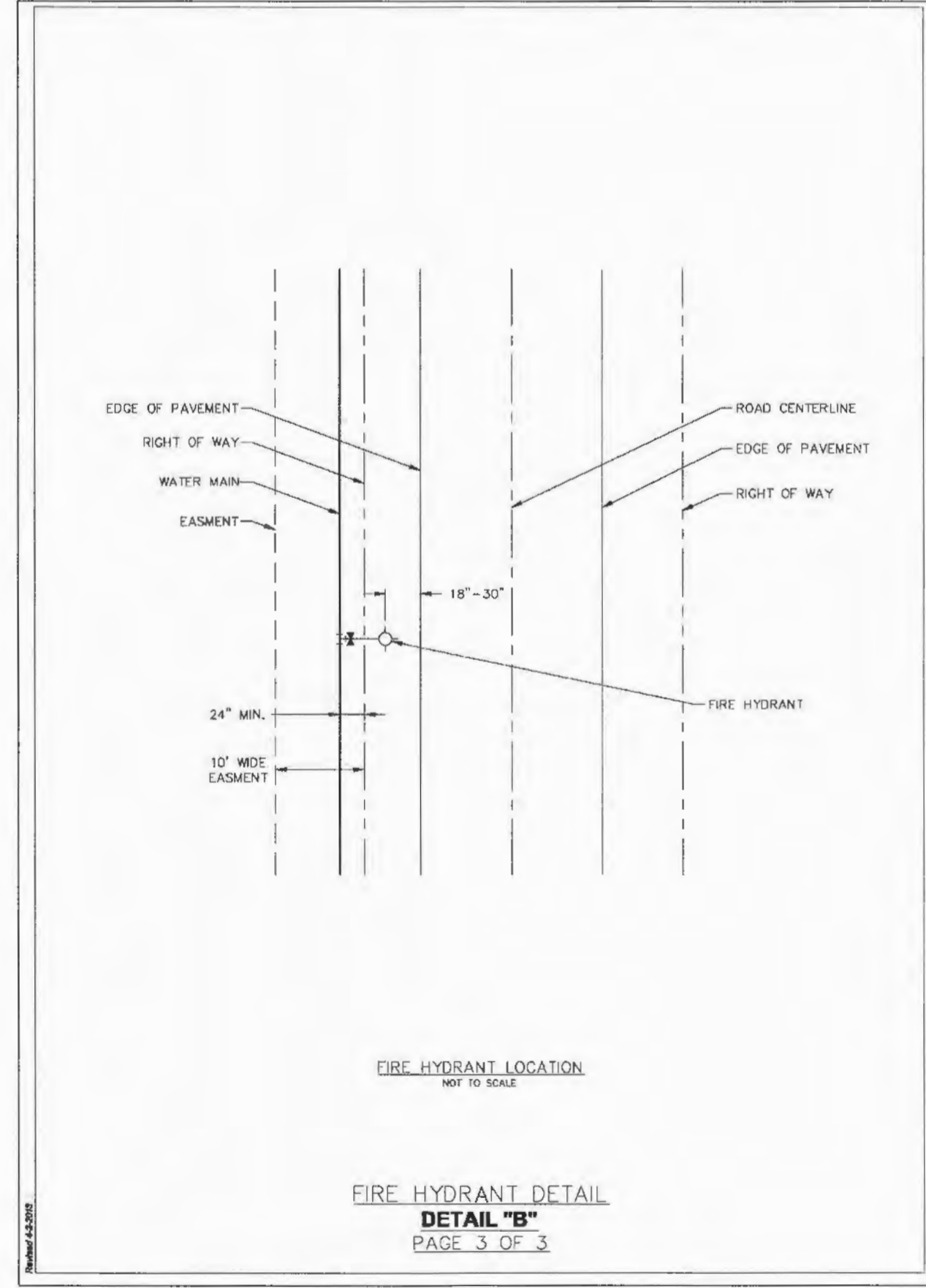
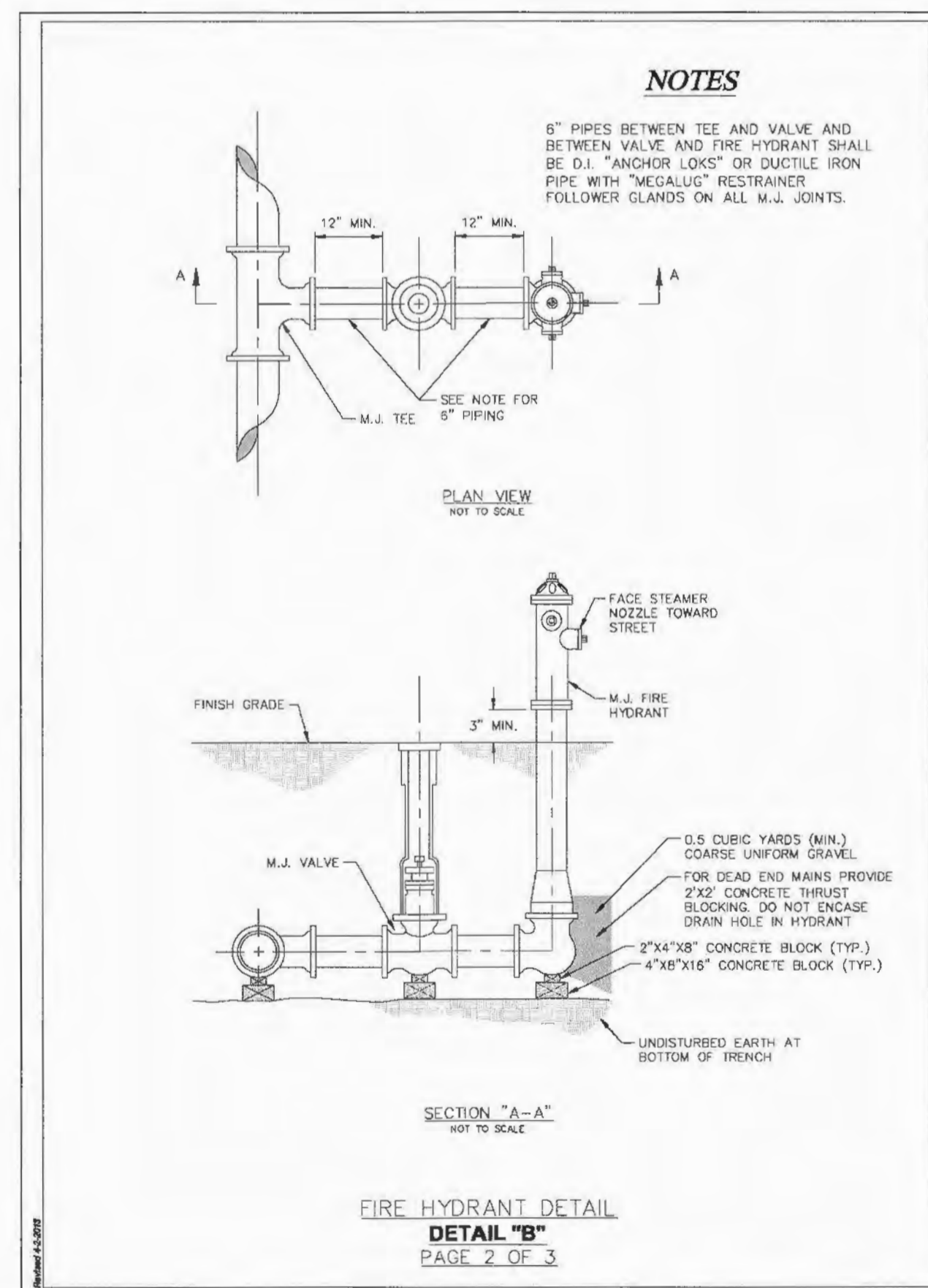
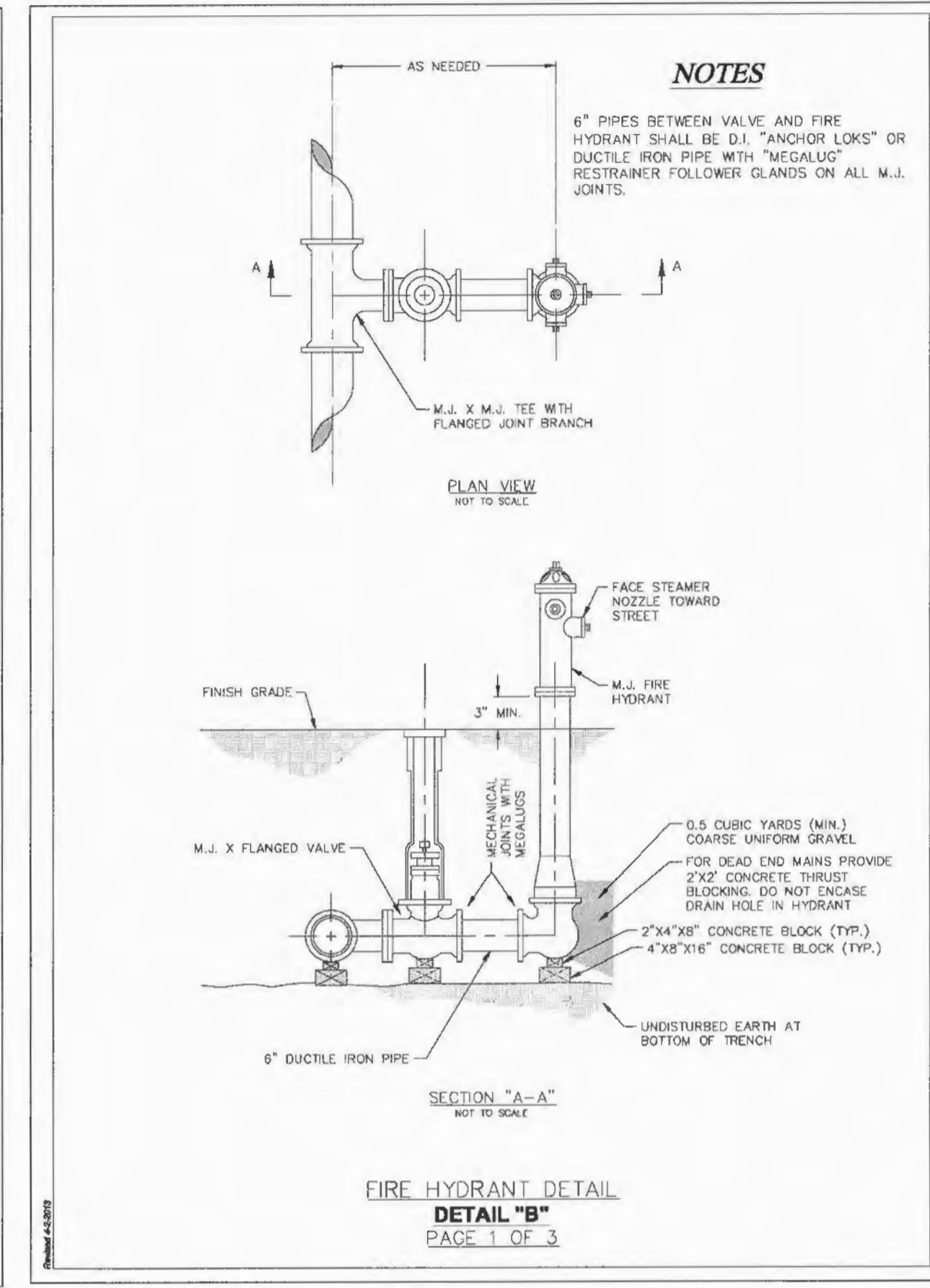
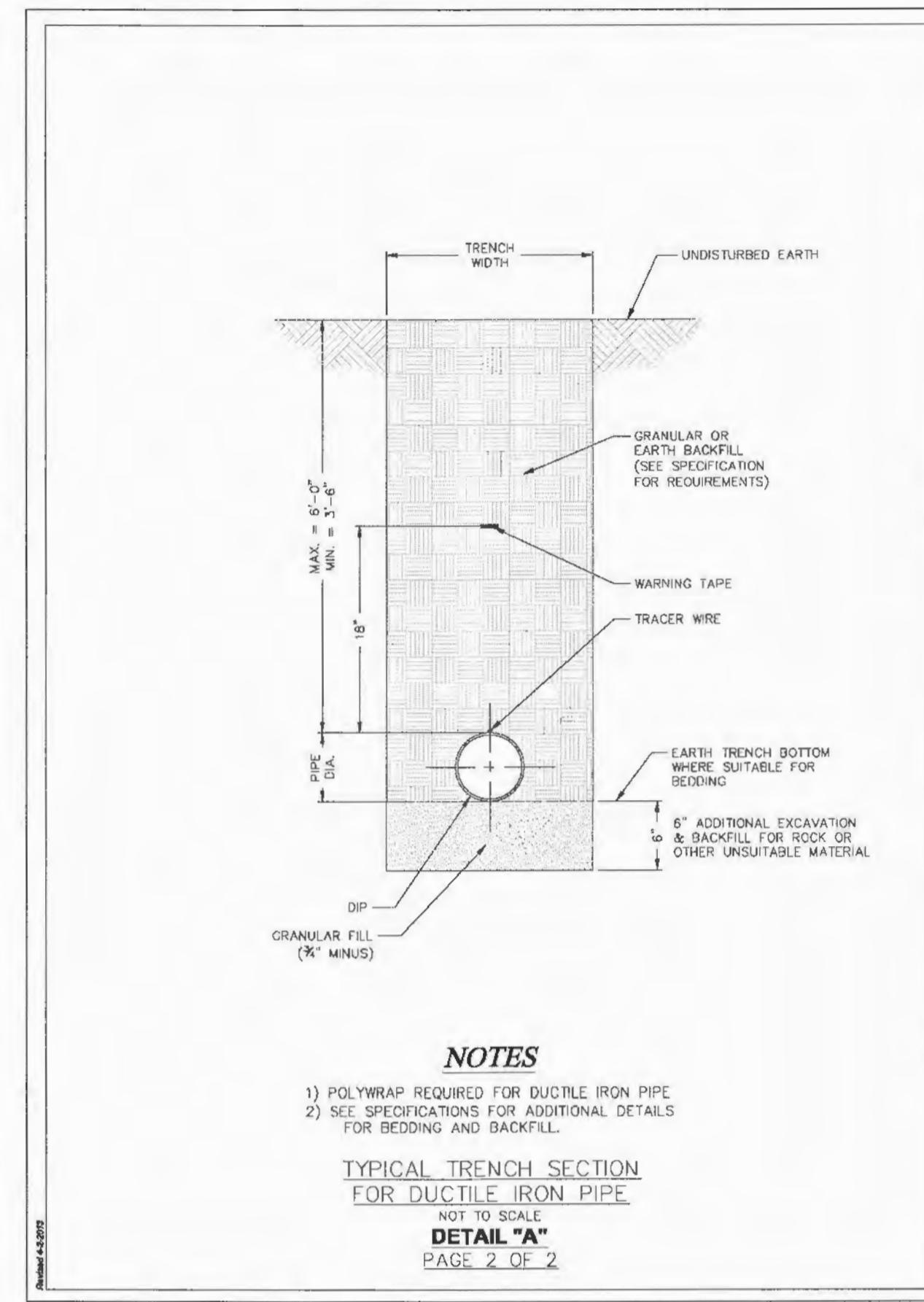
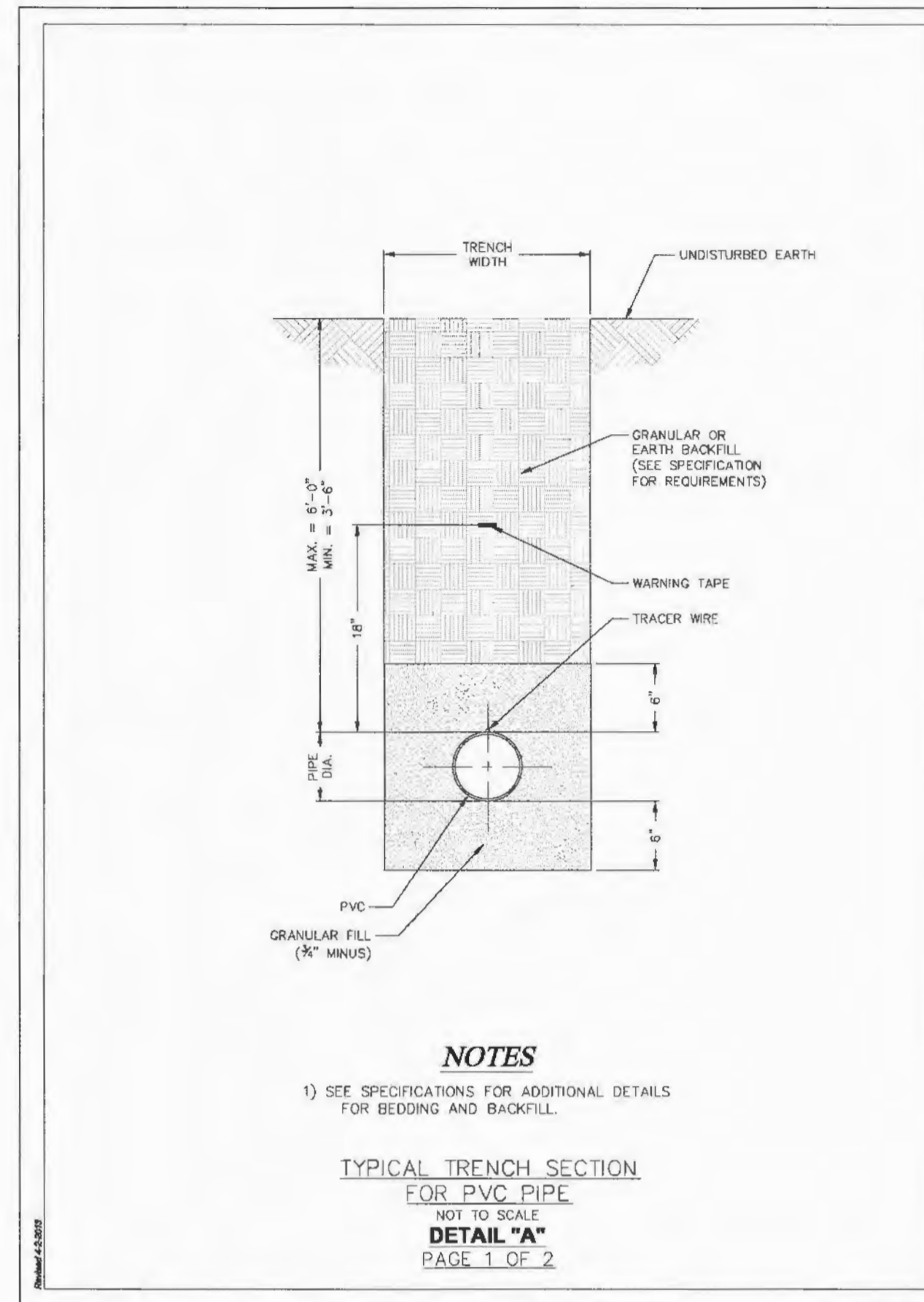


WATER NOTES

- The water system shall be installed in accordance with the latest Guidelines and Specifications of Public Water Supply District No. 2 of St. Charles County, Missouri and all other applicable federal, state, and local requirements.
- Public Water Supply District No. 2 of St. Charles County specifications are on file with the Missouri Department of Natural Resources. Please refer to specifications Review Number:

6050805-13

- Public Water Supply District No. 2 of St. Charles County requires a minimum of one (1) week's notice prior to beginning construction of water mains.



PROJECT TITLE

MUIRFIELD MANOR

PRS No. 13033.MCHO.00F

PICKETT, RAY & SILVER, INC.

CIVIL ENGINEERING, LAND SURVEYING, AND NATURAL RESOURCES SERVICES

Blairsville
110 West Main Street, Suite 201
Bl. Pavers, MD 21776

Phone (636) 397-1211 Fax (636) 397-1104
www.prs3.com 1-800-708-3918

ENGINEERS AUTHENTICATION

THE RESPONSIBILITY FOR PROFESSIONAL ENGINEERING LIABILITY ON THIS PROJECT IS HEREBY LIMITED TO THE SET OF PLANS AUTHENTICATED BY THE SEAL, SIGNATURE, AND DATE HEREON. ATTACHED RESPONSIBILITY IS DISCLAIMED FOR ALL OTHER ENGINEERING PLANS PROVIDED IN THIS PROJECT AND SPECIFICALLY EXCLUDES REVISIONS AFTER THIS DATE UNLESS REAUTHENTICATED.

PICKETT, RAY & SILVER, INC.
NO LICENSE 8002628

Douglas S. Tierman
D.S. TIERMAN
1/24/16

DOUGLAS S. TIERMAN
PROFESSIONAL ENGINEER LICENSE E-22345

Developer / Owner Information

McKELVEY HOMES
218 Chesterfield Towne Centre
Chesterfield, Missouri 63005
Phone: 636-530-6900

CITY OF OFALLON - FWSO No. 2 of St. Charles County Details

P+Z No. 28-13

City No.

Page No.

19 of 27