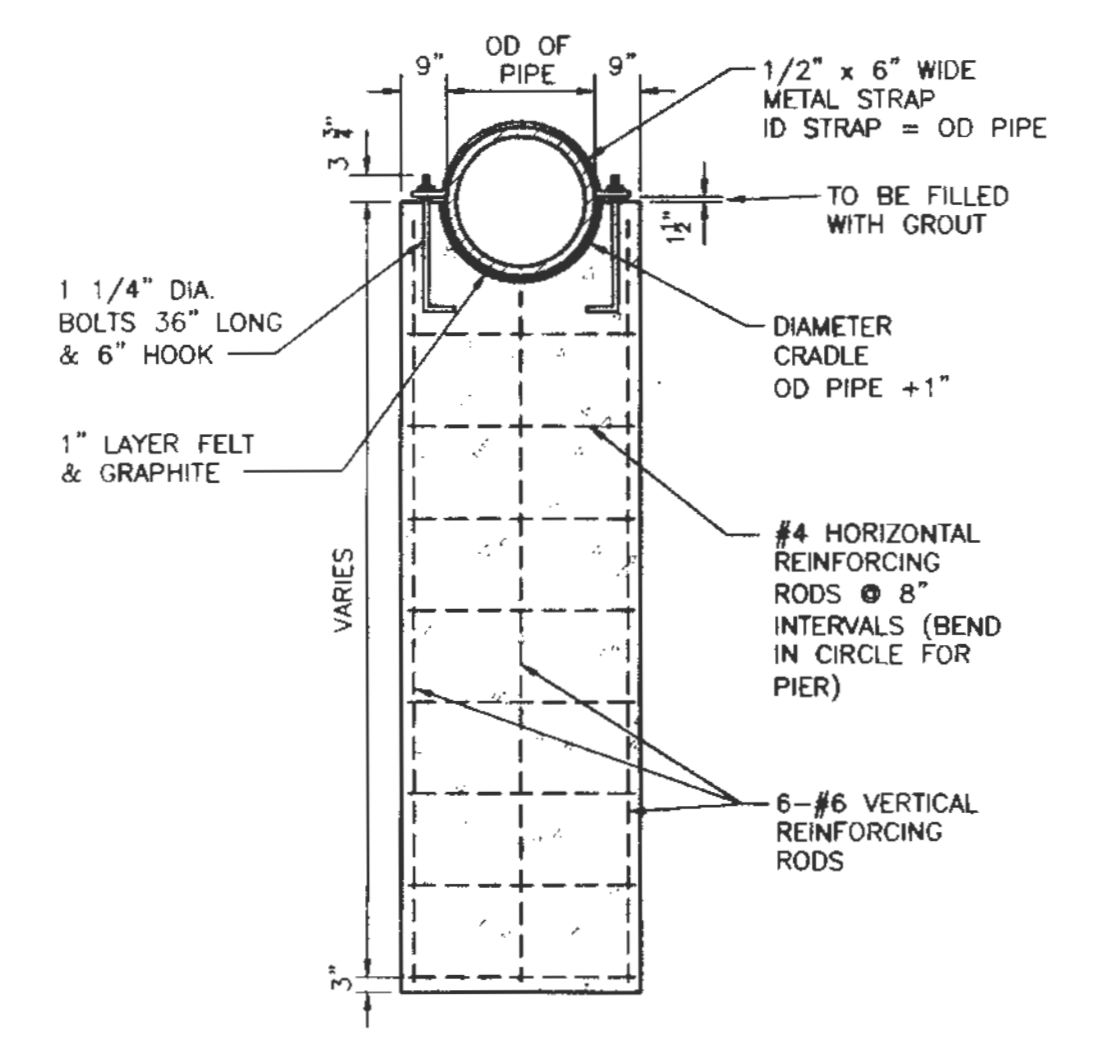
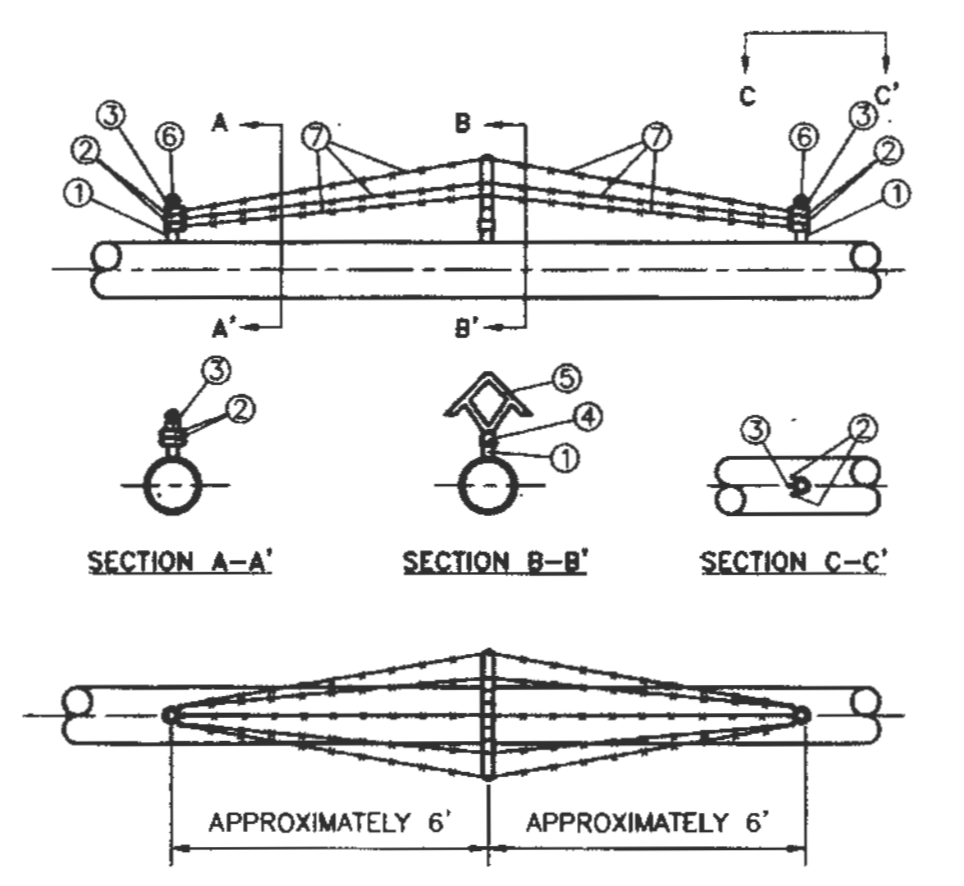


Duckett Creek Sanitary District
 AERIAL CREEK CROSSING
 DETAIL
 Des By: BSM App By: KLA Detail No. 30A
 Cld By: MDOB Date: 1-10-01



Duckett Creek Sanitary District
 CONCRETE PIER
 DETAIL
 Des By: BSM App By: KLA Detail No. 30B
 Cld By: MDOB Date: 1-9-01



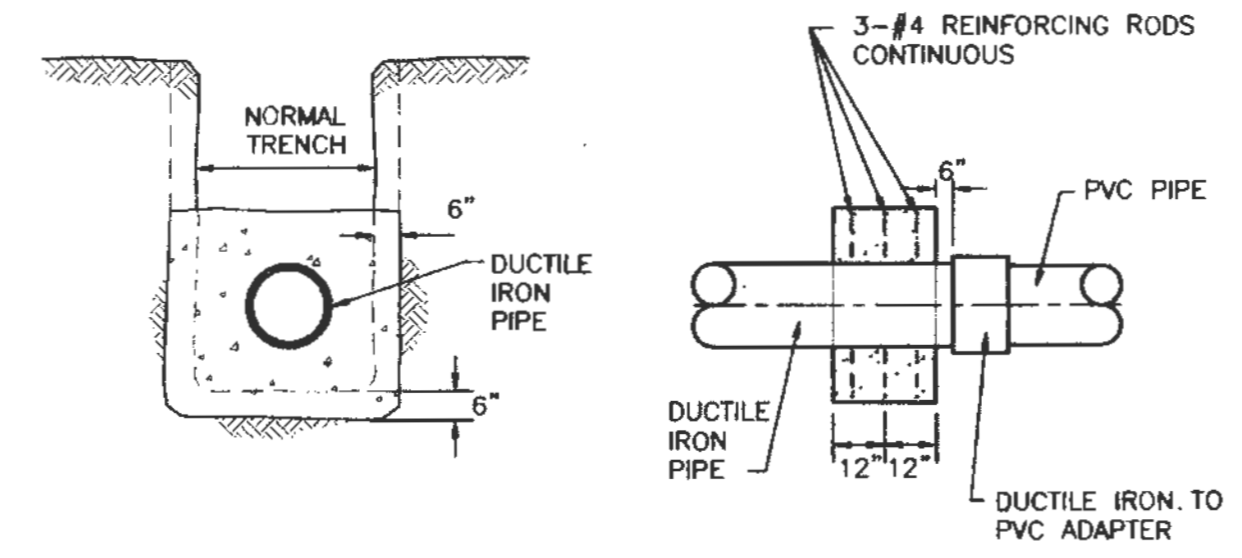
BILL OF MATERIAL

NO.	QTY	STK. NO.	SIZE	DESCRIPTION
1	6'	38290	1 1/2" x 5"	NIPPLE, STL. SCRD.
2	8		1" OD, #7 90'	BRACE BAND, GALV.
3	4		1" OD, #6	BRACE BAND, GALV.
4	2		1" OD x 59U	UNIVERSAL BASE, GALV.
5	2		NORTHLAND 5 STRD.	ARM. STL., GALV. W/BOLT
6	4		NORTHLAND #1	CAP., ACORN, GALV. W/SET SCREW
7	1**	59850	4 POINT, 12' GAUGE	WIRE, BARBED, GALV.

- NOTES:
- "BILL OF MATERIALS" PROVIDES SUFFICIENT MATERIAL FOR TWO BARRICADES.
 - LOCATION OF BARRICADES ON PIPING SYSTEM TO BE AS SPECIFIED ON APPROVED CONSTRUCTION DRAWINGS.
 - TWO BARRICADES WILL BE REQUIRED, ONE AT EACH END OF THE CROSSING AS A DETERRENT AGAINST FOOT TRAFFIC. IN SOME INSTANCES ADDITIONAL BARRICADES MAY BE REQUIRED.
 - COAT ANY EXPOSED PIPE WITH MASTIC, STOCK #51857.
- * 1 1/2" BARE PIPE ON JOB MAY BE SUBSTITUTED FOR 1 1/2" x 5" NIPPLE. SCREW THREADS NOT NECESSARY.
 ** CONTACT SUPERVISOR BEFORE ORDERING BARBED WIRE. BARBED WIRE SUPPLIED IN 1320' ROLLS ONLY, NOT RETURNABLE.

Duckett Creek Sanitary District
 AERIAL CROSSING BARRIER
 DETAIL
 Des By: BSM App By: KLA Detail No. 30C
 Cld By: MDOB Date: 1-9-01

CROSSING NO.	TOTAL LENGTH OF PIPE L	LENGTH BETWEEN C OF PIPE SUPPORTS L	CARRIER PIPE OUTSIDE DIAMETER D	CARRIER PIPE WALL THICKNESS (IN)
1				
2				



Duckett Creek Sanitary District
 AERIAL CROSSING CONCRETE COLLAR
 DETAIL
 Des By: BSM App By: KLA Detail No. 30D
 Cld By: MDOB Date: 1-9-01

PROJECT TITLE
MUIRFIELD MANOR
 PRS No. 13033.MCHO.00R

PICKETT, RAY & SILVER INC
 CIVIL ENGINEERING, LAND SURVEYING,
 AND NATURAL RESOURCES SERVICES
 St. Peters, Mo 65076
 222 N. Main St. St. Peters, MO 65076
 Phone (636) 397-1211 Fax (636) 397-1104
 www.prs.com 1-800-708-9918

ENGINEERS AUTHENTICATION
 THE RESPONSIBILITY FOR PROFESSIONAL ENGINEERING LIABILITY ON THIS PROJECT IS HEREBY LIMITED TO THE SET OF PLANS AUTHENTICATED BY THE SEAL, SIGNATURE, AND DATE HEREIN ATTACHED. RESPONSIBILITY IS DISCLAIMED FOR ALL OTHER ENGINEERING PLANS INVOLVED IN THIS PROJECT AND ESPECIALLY EXCLUDED REVISIONS AFTER THIS DATE UNLESS REAUTHENTICATED.
PICKETT, RAY & SILVER, INC
 NO LICENSE #000085
Signature
 1/20/01
 DOUGLAS S. TIEMANN
 PROFESSIONAL ENGINEER LICENSE E-23345

Developer / Owner Information
MCKELVEY HOMES
 218 Chesterfield Towne Centre
 Chesterfield, Missouri 63005
 Phone: 636-530-6900
 CITY OF O'FALLON - Duckett Creek Sanitary District Details

MCKELVEY HOMES
 Building & Construction Services

P+Z No.
 City No.
 Page No.