

REV.	DATE	DESCRIPTION
A	12-20-06	ORIGINAL ISSUE
B	1-17-07	APPENDIX NO. 1
C	1-29-07	ISSUED FOR TECH. REVIEW-ADDENDUM 2
	3-16-07	REVISED PER CITY COMMENTS / APPENDIX NO. 3

NATIONAL CITY BANK
 1400 MEXICO LOOP ROAD EAST
 OF FALLON, MO 63366

UTILITY PLAN

DESIGNED	DATE
NJW	10-18-06
DRAWN	DATE
TJW	10-18-06
CHECKED	

JOB NO.
 2005090.55

C-141

LEGEND
 (SEE SHEET C-001 FOR GENERAL LEGEND)

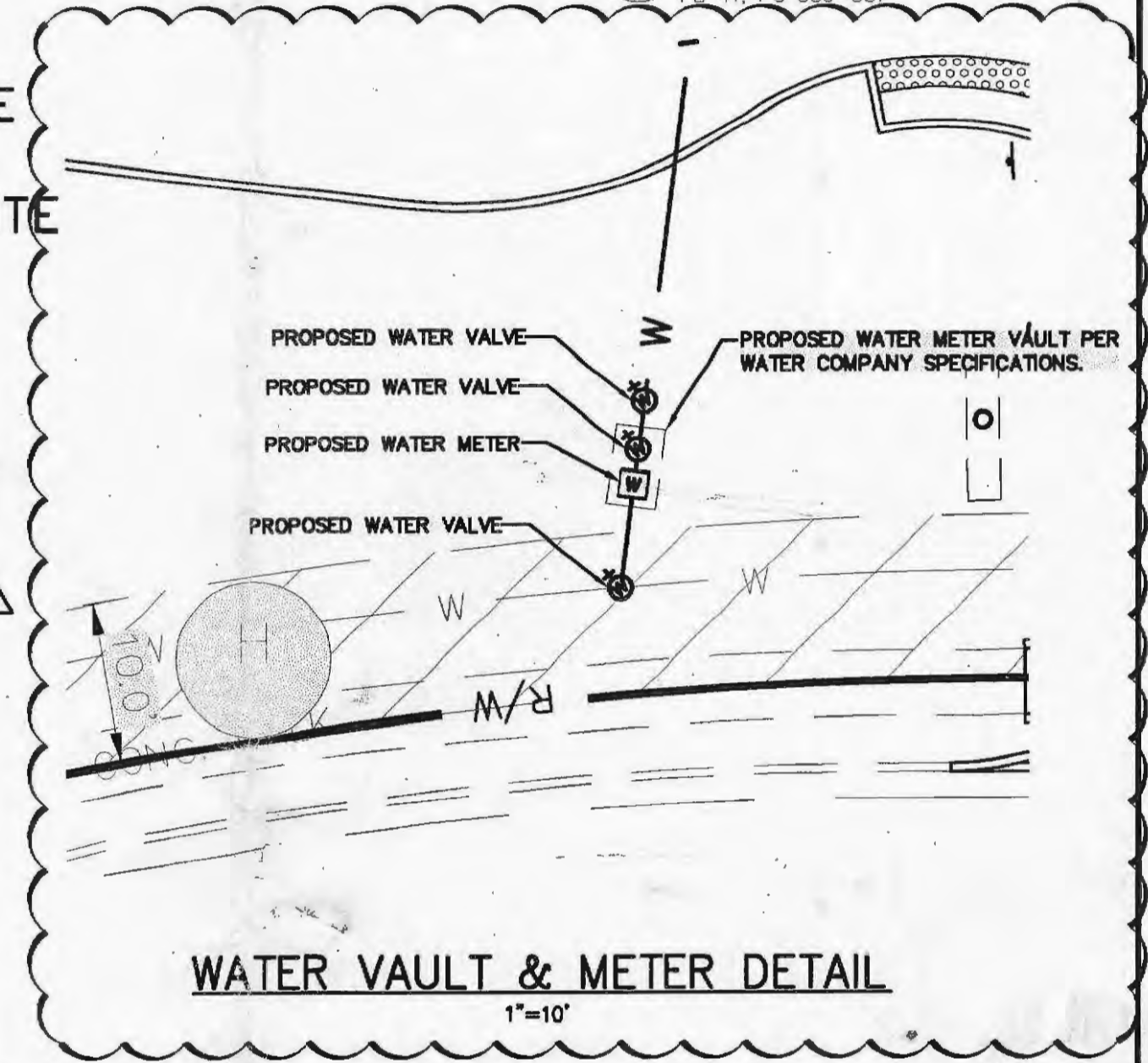
- ST EXISTING FIRE HYDRANT
- ST PROPOSED STORM SEWER
- SAN PROPOSED SANITARY SEWER
- W PROPOSED WATER SERVICE
- GAS PROPOSED GAS SERVICE
- UE&UC PROPOSED UNDERGROUND ELECTRIC AND CABLE SERVICE
- UT PROPOSED UNDERGROUND TELEPHONE SERVICE
- D.S. O. PROPOSED DOWNSPOUT
- C.O. PROPOSED CLEAN OUT
- A # APPURTENANCES



CALL BEFORE YOU DIG!
 1-800-DIG-RITE

EXISTING EASEMENTS

- A 60' W UNDISTURBED DRAINAGE EASEMENT
- B DRAINAGE EASEMENT (PB 130, PG 650)
- C 10' W UTILITY EASEMENT (PB 41, PG 387)
- D 5' W UTILITY EASEMENT
- E 10' W STORM SEWER EASEMENT (PB 41, PG 387)
- F 10' W SEWER EASEMENT (PB 32, PG 283)
- G 15' W SIDEWALK EASEMENT (PB 32, PG 283)
- H 10' W SIDEWALK & UTILITY EASEMENT (PB 41, PG 386-387)



EXISTING UTILITIES

- ST 1 EXISTING STORM SEWER INLET RIM=512.81
- ST 2 EXISTING STORM SEWER MANHOLE RIM=514.05
- ST 3 EXISTING STORM SEWER MANHOLE RIM=506.23
- ST 4 EXISTING STORM SEWER MANHOLE RIM=508.72
- ST 5 EXISTING STORM SEWER MANHOLE RIM=514.75
- ST 6 EXISTING WORTSENTRY TREATMENT UNIT RIM=514.18
- SAN 5 EXISTING SANITARY SEWER MANHOLE RIM=507.10
- SAN 6 EXISTING SANITARY SEWER MANHOLE RIM=502.78

PROPOSED UTILITIES

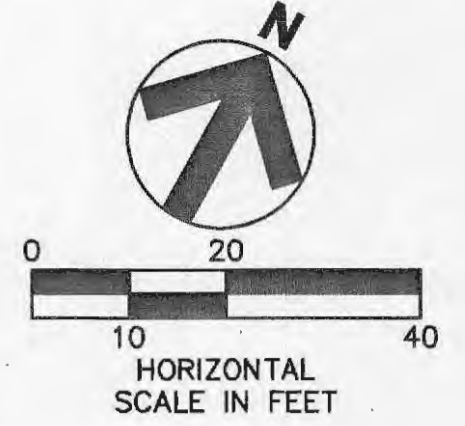
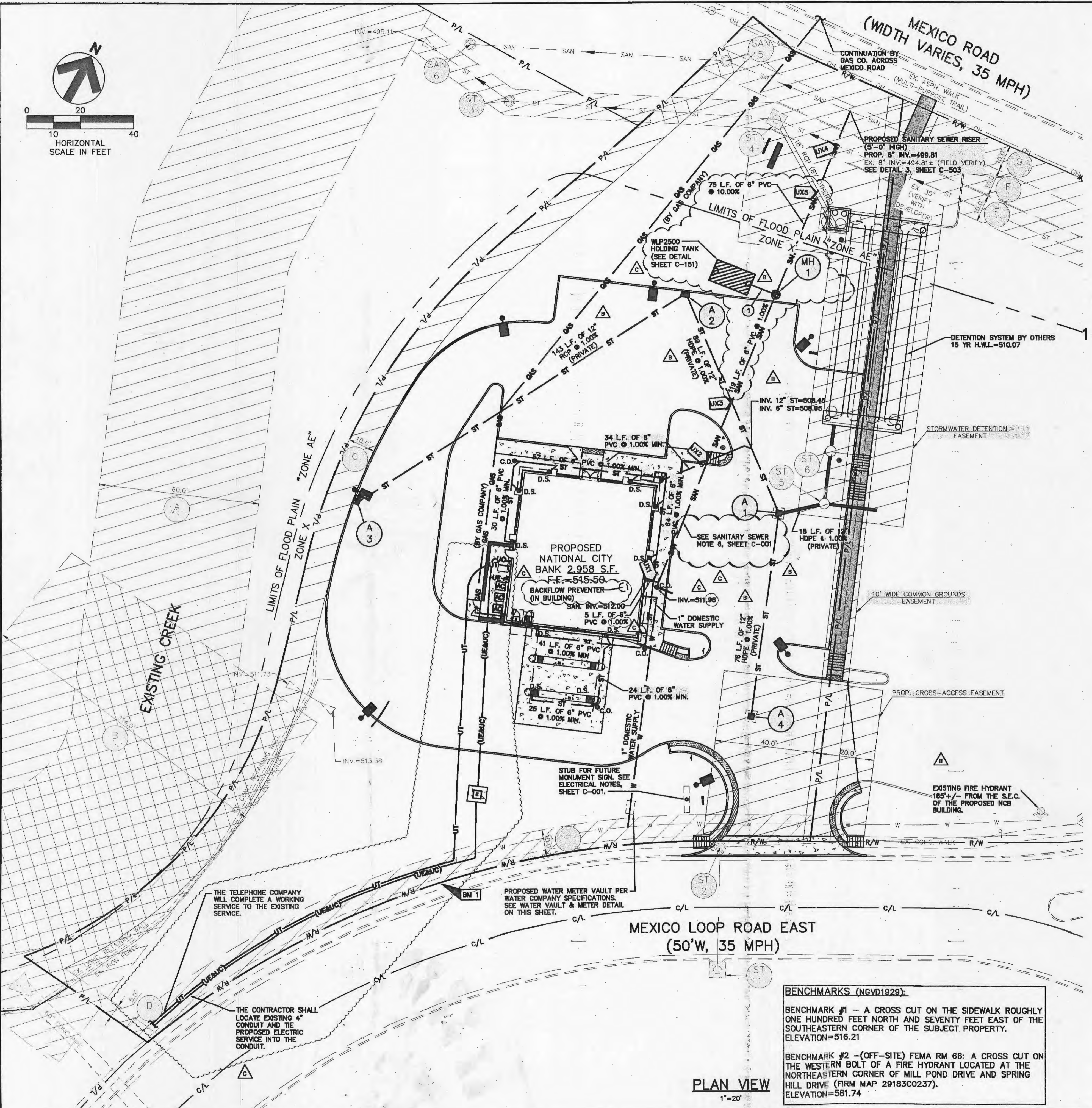
- A 2 PROPOSED 2'x2' GRATE INLET SEE DETAIL 6, SHEET C-503 RIM=513.00
- A 3 PROPOSED 2'x2' GRATE INLET SEE DETAIL 6, SHEET C-503 RIM=512.75
- A 4 PROPOSED 2'x2' GRATE INLET SEE DETAIL 6, C-503 RIM=513.50
- JX1 UTILITY CROSSING INV. 6" ST=510.09
- JX2 UTILITY CROSSING INV. 6" ST=509.53
- JX3 UTILITY CROSSING INV. 12" ST=506.83
- JX4 UTILITY CROSSING INV. 15" ST=499.93
- JX5 UTILITY CROSSING INV. 6" SAN=502.70

PROPOSED UTILITIES

- MH 1 PROPOSED 4" MANHOLE WITH DROP PIPE SEE DETAIL 2, SHEET C-504 RIM=514.50
- A 1 PROPOSED 2'x2' GRATE INLET SEE DETAIL 6, SHEET C-503 RIM=514.00

BENCHMARKS (NGVD1929):
 BENCHMARK #1 - A CROSS CUT ON THE SIDEWALK ROUGHLY ONE HUNDRED FEET NORTH AND SEVENTY FEET EAST OF THE SOUTHEASTERN CORNER OF THE SUBJECT PROPERTY. ELEVATION=516.21
 BENCHMARK #2 - (OFF-SITE) FEMA RM 66: A CROSS CUT ON THE WESTERN BOLT OF A FIRE HYDRANT LOCATED AT THE NORTHEASTERN CORNER OF MILL POND DRIVE AND SPRING HILL DRIVE (FIRM MAP 29183C0237). ELEVATION=581.74

PLAN VIEW
 1"=20'



Drawing file: 200509055_Civil_Construction_Documents_recover.dwg
 Drawing name: G:\Civil\200509055\DWG\Construction_Documents_recover.dwg
 Mar 16, 2007 4:47pm