



REV.	DATE	DESCRIPTION
B	12-20-06	ORIGINAL ISSUE
C	1-29-07	ISSUED FOR TECH. REVIEW-ADDENDUM 2
	3-16-07	REVISED PER CITY COMMENTS / ADDENDUM NO. 3

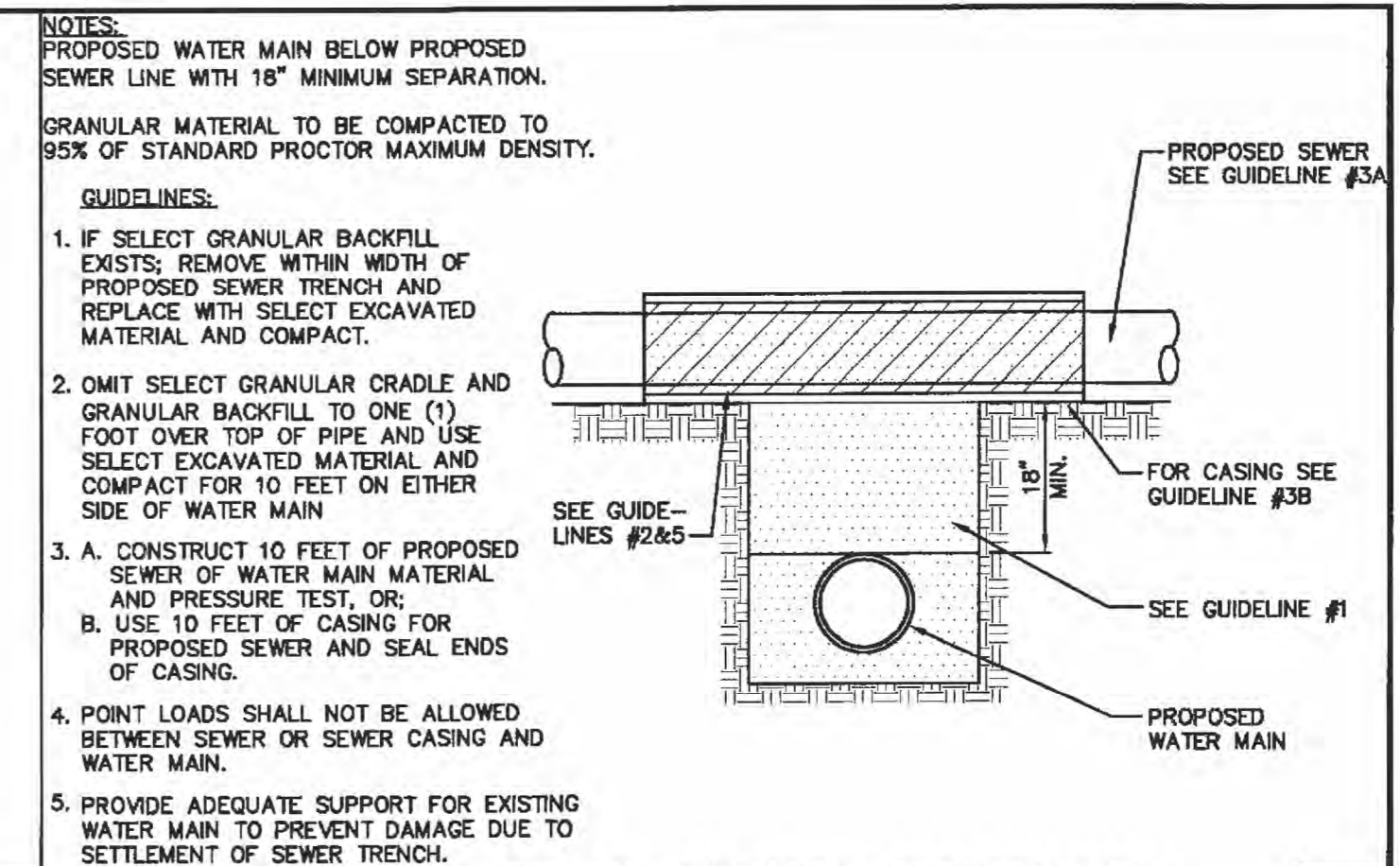
NATIONAL CITY BANK
 1400 MEXICO LOOP ROAD EAST
 O'FALLON, MO 63366

DESIGNED	DATE
NJW	10-18-06
DRAWN	
TJW	10-18-06
CHECKED	

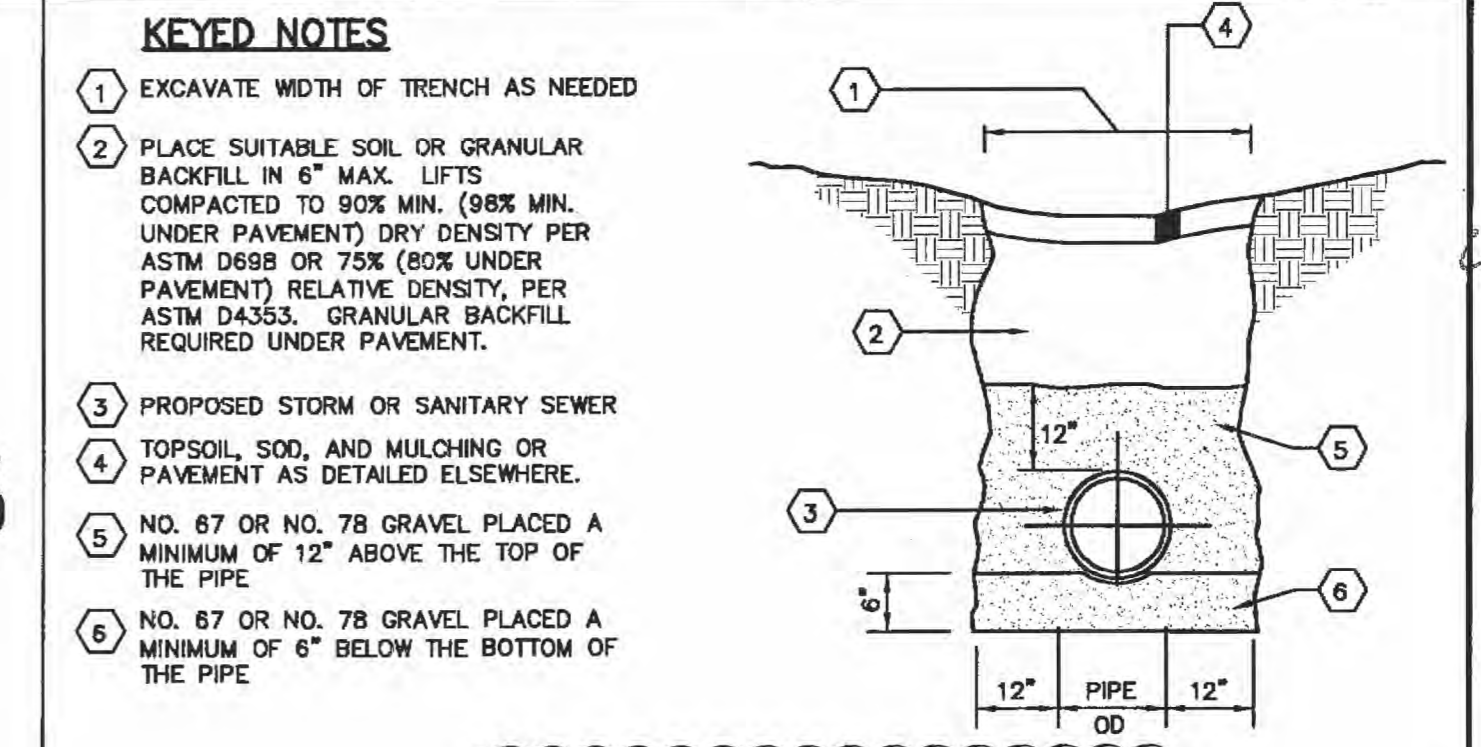
JOB NO.
2005090.55

C-503

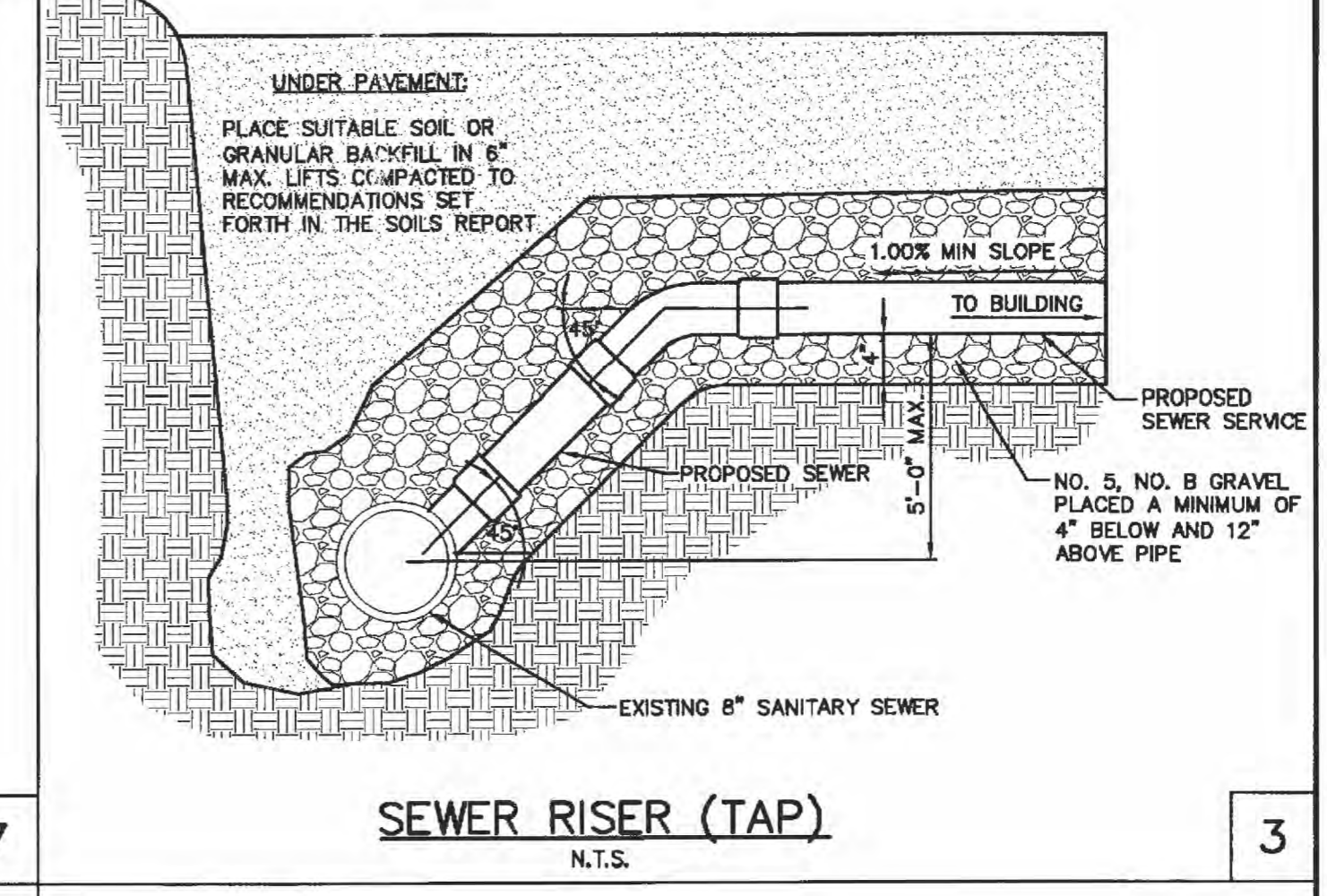
DETAILS



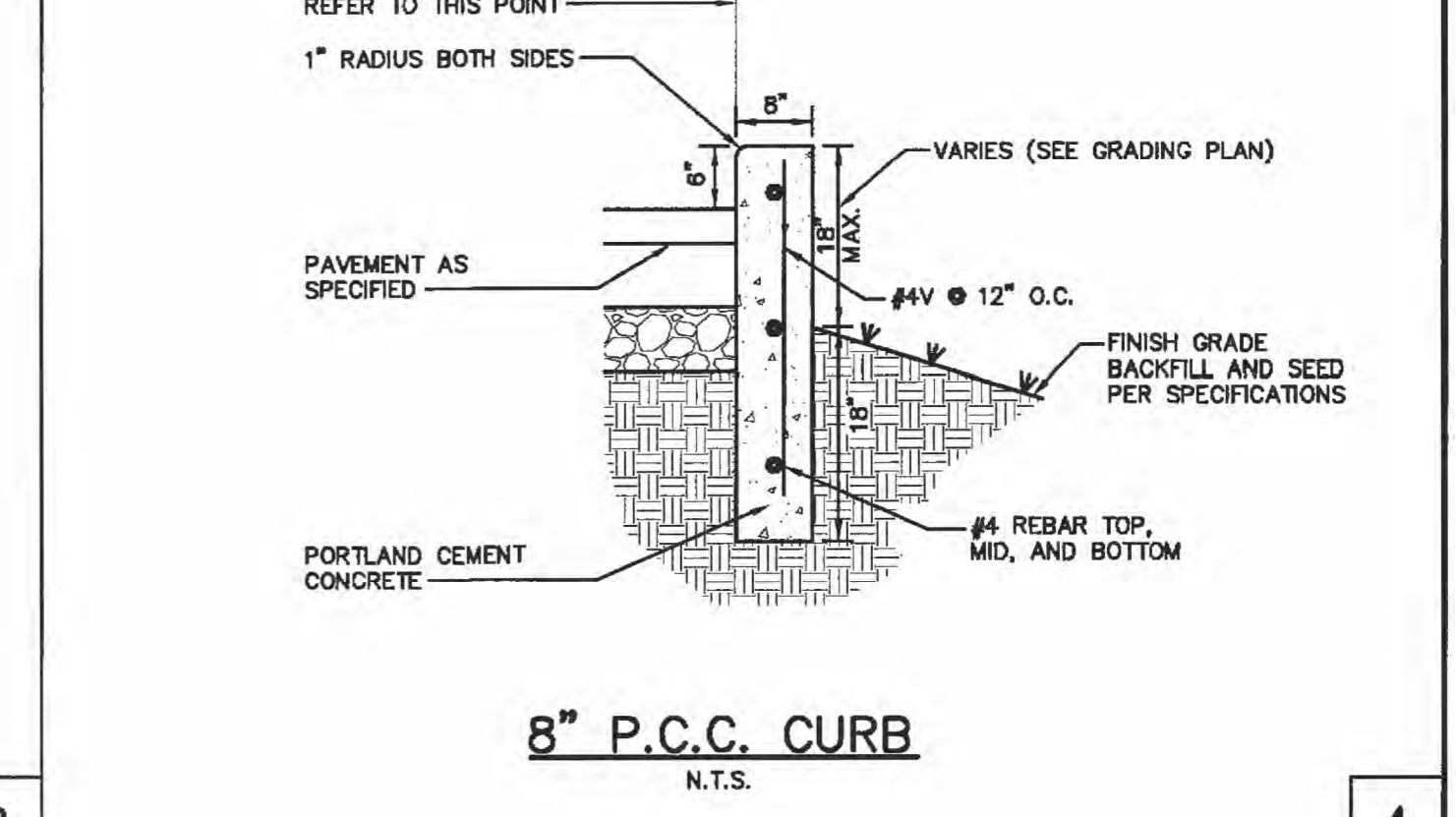
1



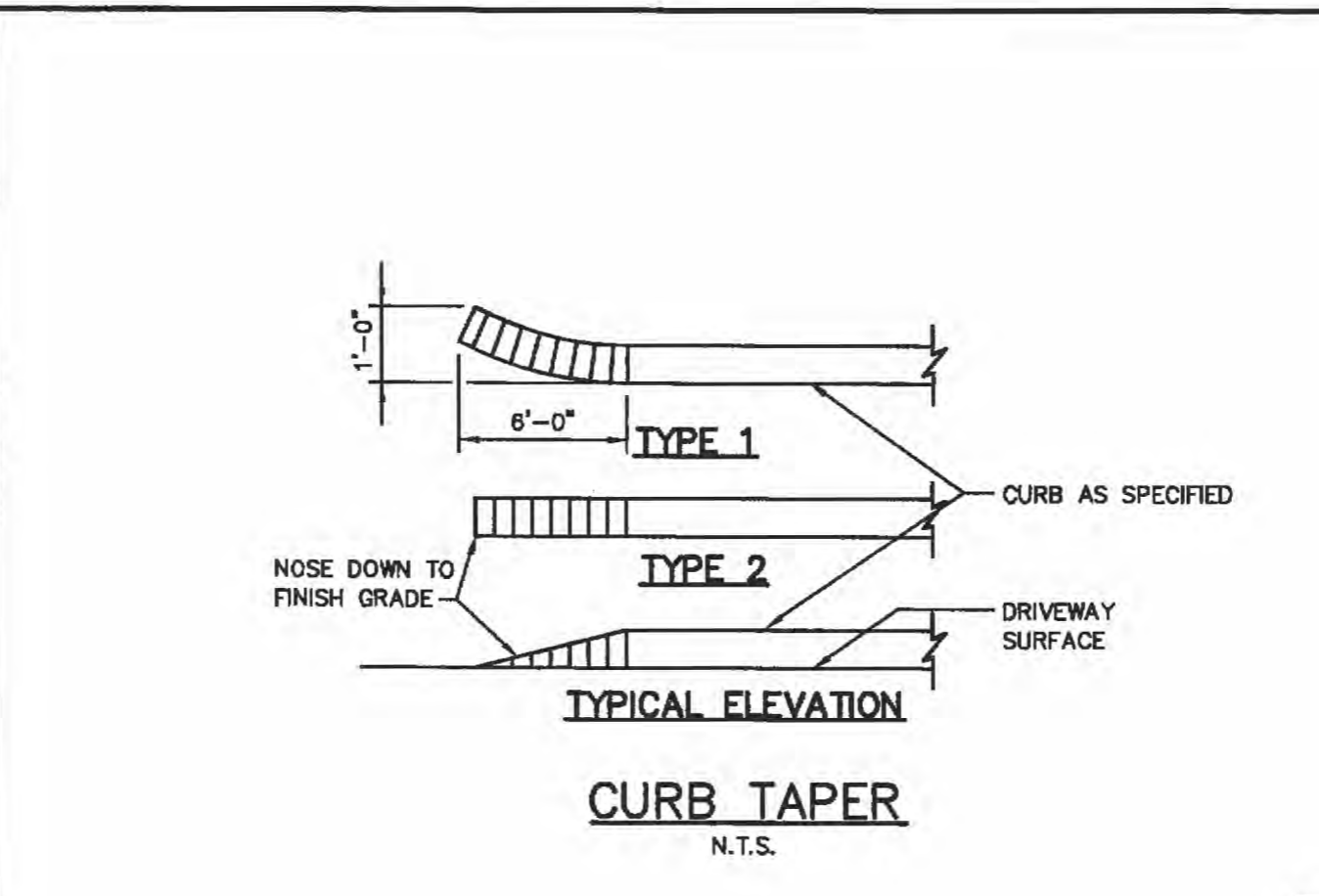
2



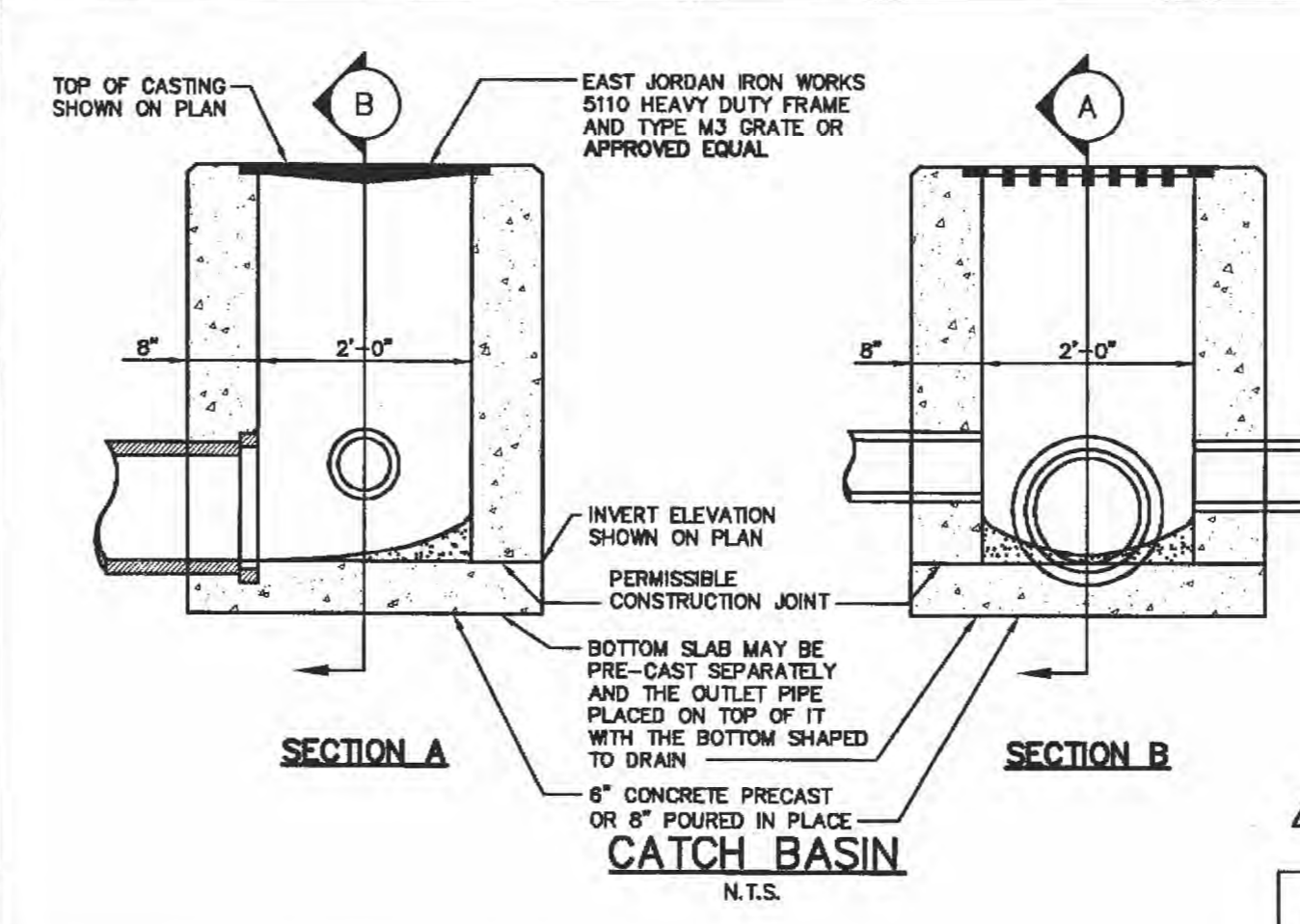
3



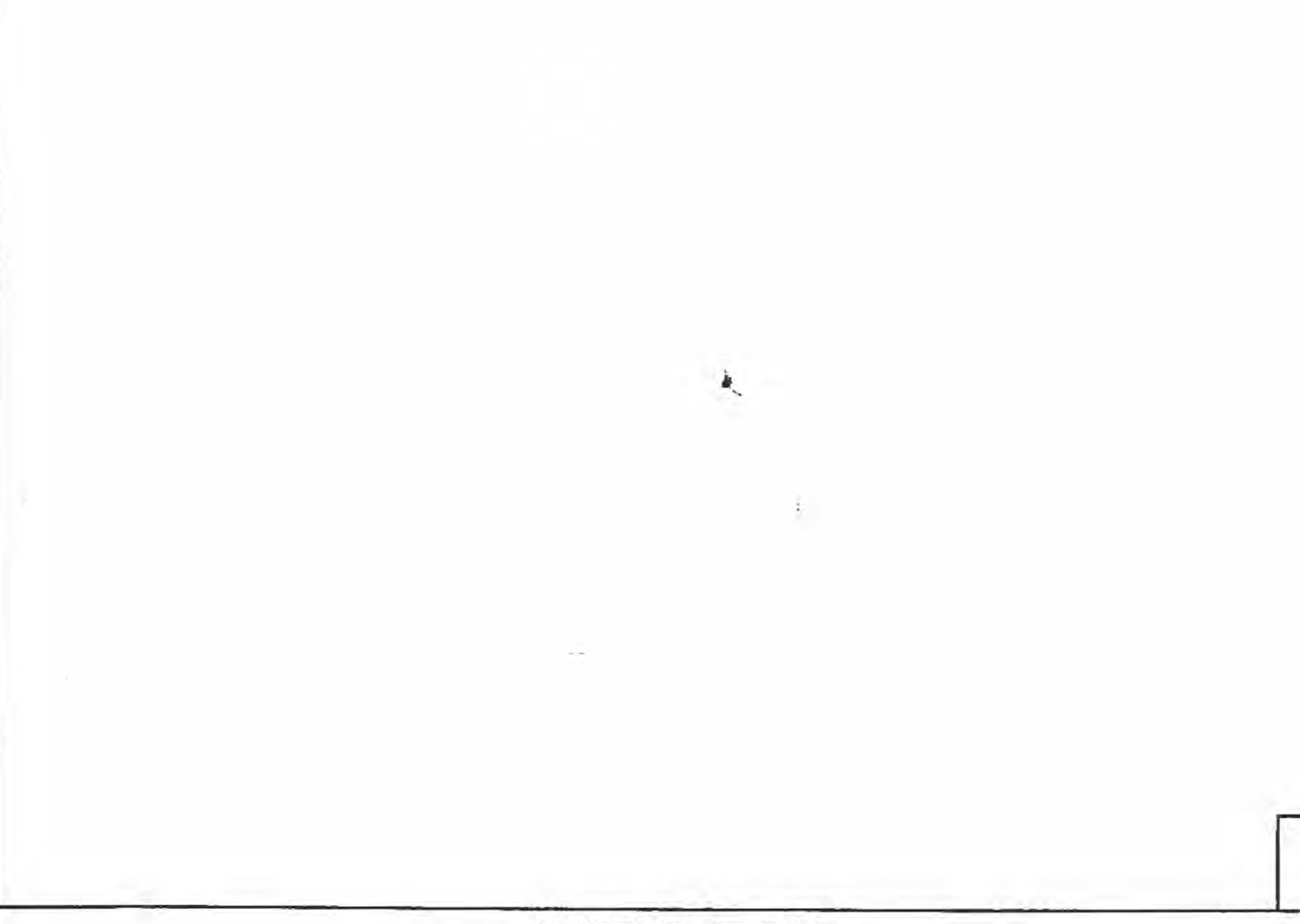
4



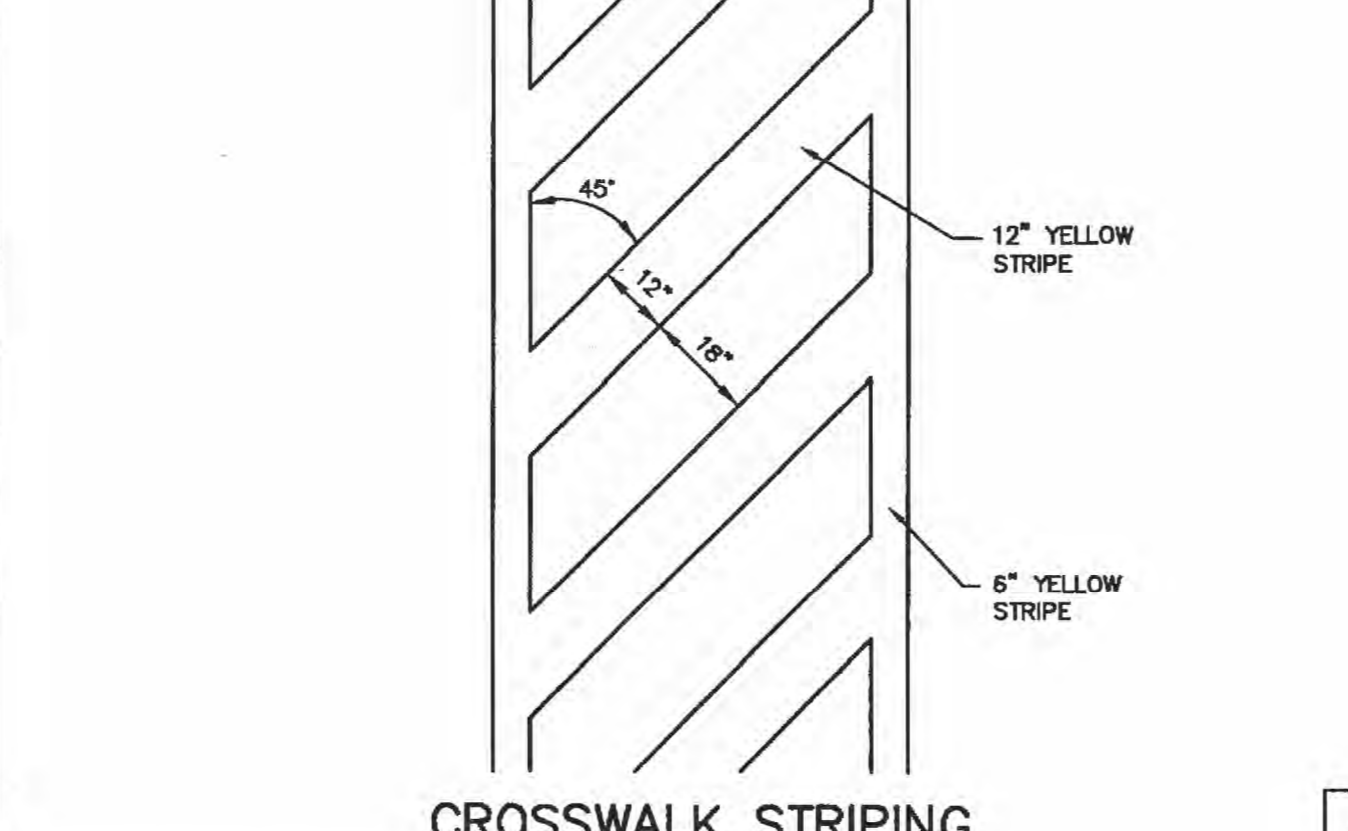
5



6



12



8

5110 Catch Basin Inlet

Heavy Duty
 Specify type grate
 See table for assembled weights
 With TYPE M1
 Light Duty Flat Grate (Non-Traffic)
 Not recommended for bicycle traffic
 Approx. 360 sq. in. of opening

Table of Assembled Weights

GRATE TYPE				
M1 Flat Light Duty	M2 Flat Heavy Duty	M3 Sinusoidal	M4 Flat Medium	M5 Flat Heavy
150 lbs (73kg)	185 lbs (84kg)	200 lbs (91kg)	190 lbs (86kg)	320 lbs (100kg)

TYPE M2 Heavy Duty Flat Grate
 Not recommended for bicycle traffic
 Approx. 340 sq. in. of opening

TYPE M4 Medium Duty Flat Grate
 Approx. 295 sq. in. of opening

TYPE M3 Heavy Duty Sinusoidal Grate
 Approx. 320 sq. in. of opening

TYPE M5 Heavy Duty Pedestrian Grate
 Approx. 150 sq. in. of opening

EAST JORDAN IRON WORKS, INC 1-800-MANHOLE
 WWW.EJIW.COM

10

SEWER INLET MARKINGS
 N.T.S.

NOTE: THE CITY WILL ONLY ALLOW THE MARKINGS AND ADHESIVE PROCEDURES SHOWN IN THIS TABLE OR AN APPROVED EQUAL BY ALMETEK INDUSTRIES. "PEEL AND STICK" ADHESIVE PADS WILL NOT BE ALLOWED.

MANUFACTURING	SIZE	ADHESIVE	STYLE	MESSAGE (PART #)	WEBSITE
ACP INTERNATIONAL	3 7/8"	EPOXY	CRYSTAL CAP	NO DUMPING DRAINS TO WATERWAYS (SD-W-CC)	WWW.ACPINTERNATIONAL.COM
DAS MANUFACTURING, INC	4"	EPOXY	STANDARD STYLE	NO DUMPING DRAINS TO STREAM (#SDS)	WWW.DASMANUFACTURING.COM

15

MULTI-USE TRAIL
 N.T.S.

16

BIKE RACK
 N.T.S.

Specifications:
 The Cambridge Bike Rack is a heavy-duty, welded rail bike rack that accommodates 6 bikes. It can be accessed as either a single or double side load. It can be surface mounted or permanently installed in ground. Optional mount plate covers are available also. The posts are manufactured from 3-1/2", 4-1/2" or 5-9/16" O.D. heavy-duty steel. The interior rails are manufactured of 1-5/8" O.D. galvanized steel. Caps are made from aluminum.

Finish: Powder Coated Standard COLOR: HUNTER GREEN

Mounting Options:
 DC1: 1 piece
 DC2: 2 piece
 M1: Permanent Mount
 M3: Round Surface Mount

12

CROSSWALK STRIPING
 N.T.S.

8

SEWER INLET MARKINGS
 N.T.S.

NOTE: THE CITY WILL ONLY ALLOW THE MARKINGS AND ADHESIVE PROCEDURES SHOWN IN THIS TABLE OR AN APPROVED EQUAL BY ALMETEK INDUSTRIES. "PEEL AND STICK" ADHESIVE PADS WILL NOT BE ALLOWED.

MANUFACTURING	SIZE	ADHESIVE	STYLE	MESSAGE (PART #)	WEBSITE
ACP INTERNATIONAL	3 7/8"	EPOXY	CRYSTAL CAP	NO DUMPING DRAINS TO WATERWAYS (SD-W-CC)	WWW.ACPINTERNATIONAL.COM
DAS MANUFACTURING, INC	4"	EPOXY	STANDARD STYLE	NO DUMPING DRAINS TO STREAM (#SDS)	WWW.DASMANUFACTURING.COM

15

MULTI-USE TRAIL
 N.T.S.

16

BIKE RACK
 N.T.S.

Specifications:
 The Cambridge Bike Rack is a heavy-duty, welded rail bike rack that accommodates 6 bikes. It can be accessed as either a single or double side load. It can be surface mounted or permanently installed in ground. Optional mount plate covers are available also. The posts are manufactured from 3-1/2", 4-1/2" or 5-9/16" O.D. heavy-duty steel. The interior rails are manufactured of 1-5/8" O.D. galvanized steel. Caps are made from aluminum.

Finish: Powder Coated Standard COLOR: HUNTER GREEN

Mounting Options:
 DC1: 1 piece
 DC2: 2 piece
 M1: Permanent Mount
 M3: Round Surface Mount

12

CROSSWALK STRIPING
 N.T.S.

8

SEWER INLET MARKINGS
 N.T.S.

NOTE: THE CITY WILL ONLY ALLOW THE MARKINGS AND ADHESIVE PROCEDURES SHOWN IN THIS TABLE OR AN APPROVED EQUAL BY ALMETEK INDUSTRIES. "PEEL AND STICK" ADHESIVE PADS WILL NOT BE ALLOWED.

MANUFACTURING	SIZE	ADHESIVE	STYLE	MESSAGE (PART #)	WEBSITE
ACP INTERNATIONAL	3 7/8"	EPOXY	CRYSTAL CAP	NO DUMPING DRAINS TO WATERWAYS (SD-W-CC)	WWW.ACPINTERNATIONAL.COM
DAS MANUFACTURING, INC	4"	EPOXY	STANDARD STYLE	NO DUMPING DRAINS TO STREAM (#SDS)	WWW.DASMANUFACTURING.COM

15

MULTI-USE TRAIL
 N.T.S.

16

BIKE RACK
 N.T.S.

Specifications:
 The Cambridge Bike Rack is a heavy-duty, welded rail bike rack that accommodates 6 bikes. It can be accessed as either a single or double side load. It can be surface mounted or permanently installed in ground. Optional mount plate covers are available also. The posts are manufactured from 3-1/2", 4-1/2" or 5-9/16" O.D. heavy-duty steel. The interior rails are manufactured of 1-5/8" O.D. galvanized steel. Caps are made from aluminum.

Finish: Powder Coated Standard COLOR: HUNTER GREEN

Mounting Options:
 DC1: 1 piece
 DC2: 2 piece
 M1: Permanent Mount
 M3: Round Surface Mount

12

CROSSWALK STRIPING
 N.T.S.

8

SEWER INLET MARKINGS
 N.T.S.

NOTE: THE CITY WILL ONLY ALLOW THE MARKINGS AND ADHESIVE PROCEDURES SHOWN IN THIS TABLE OR AN APPROVED EQUAL BY ALMETEK INDUSTRIES. "PEEL AND STICK" ADHESIVE PADS WILL NOT BE ALLOWED.

MANUFACTURING	SIZE	ADHESIVE	STYLE	MESSAGE (PART #)	WEBSITE
ACP INTERNATIONAL	3 7/8"	EPOXY	CRYSTAL CAP	NO DUMPING DRAINS TO WATERWAYS (SD-W-CC)	WWW.ACPINTERNATIONAL.COM
DAS MANUFACTURING, INC	4"	EPOXY	STANDARD STYLE	NO DUMPING DRAINS TO STREAM (#SDS)	WWW.DASMANUFACTURING.COM

15

MULTI-USE TRAIL
 N.T.S.

16

BIKE RACK
 N.T.S.

Specifications:
 The Cambridge Bike Rack is a heavy-duty, welded rail bike rack that accommodates 6 bikes. It can be accessed as either a single or double side load. It can be surface mounted or permanently installed in ground. Optional mount plate covers are available also. The posts are manufactured from 3-1/2", 4-1/2" or 5-9/16" O.D. heavy-duty steel. The interior rails are manufactured of 1-5/8" O.D. galvanized steel. Caps are made from aluminum.

Finish: Powder Coated Standard COLOR: HUNTER GREEN

Mounting Options:
 DC1: 1 piece
 DC2: 2 piece
 M1: Permanent Mount
 M3: Round Surface Mount

12

CROSSWALK STRIPING
 N.T.S.

8

SEWER INLET MARKINGS
 N.T.S.

NOTE: THE CITY WILL ONLY ALLOW THE MARKINGS AND ADHESIVE PROCEDURES SHOWN IN THIS TABLE OR AN APPROVED EQUAL BY ALMETEK INDUSTRIES. "PEEL AND STICK" ADHESIVE PADS WILL NOT BE ALLOWED.

MANUFACTURING	SIZE	ADHESIVE	STYLE	MESSAGE (PART #)	WEBSITE
ACP INTERNATIONAL	3 7/8"	EPOXY	CRYSTAL CAP	NO DUMPING DRAINS TO WATERWAYS (SD-W-CC)	WWW.ACPINTERNATIONAL.COM
DAS MANUFACTURING, INC	4"	EPOXY	STANDARD STYLE	NO DUMPING DRAINS TO STREAM (#SDS)	WWW.DASMANUFACTURING.COM

15

MULTI-USE TRAIL
 N.T.S.

16

BIKE RACK
 N.T.S.

Specifications:
 The Cambridge Bike Rack is a heavy-duty, welded rail bike rack that accommodates 6 bikes. It can be accessed as either a single or double side load. It can be surface mounted or permanently installed in ground. Optional mount plate covers are available also. The posts are manufactured from 3-1/2", 4-1/2" or 5-9/16" O.D. heavy-duty steel. The interior rails are manufactured of 1-5/8" O.D. galvanized steel. Caps are made from aluminum.

Finish: Powder Coated Standard COLOR: HUNTER GREEN

Mounting Options:
 DC1: 1 piece
 DC2: 2 piece
 M1: Permanent Mount
 M3: Round Surface Mount

12

CROSSWALK STRIPING
 N.T.S.

8

SEWER INLET MARKINGS
 N.T.S.

NOTE: THE CITY WILL ONLY ALLOW THE MARKINGS AND ADHESIVE PROCEDURES SHOWN IN THIS TABLE OR AN APPROVED EQUAL BY ALMETEK INDUSTRIES. "PEEL AND STICK" ADHESIVE PADS WILL NOT BE ALLOWED.

MANUFACTURING	SIZE	ADHESIVE	STYLE	MESSAGE (PART #)	WEBSITE
ACP INTERNATIONAL	3 7/8"	EPOXY	CRYSTAL CAP	NO DUMPING DRAINS TO WATERWAYS (SD-W-CC)	WWW.ACPINTERNATIONAL.COM
DAS MANUFACTURING, INC	4"	EPOXY	STANDARD STYLE	NO DUMPING DRAINS TO STREAM (#SDS)	WWW.DASMANUFACTURING.COM

15

MULTI-USE TRAIL
 N.T.S.

16

BIKE RACK
 N.T.S.

Specifications:
 The Cambridge Bike Rack is a heavy-duty, welded rail bike rack that accommodates 6 bikes. It can be accessed as either a single or double side load. It can be surface mounted or permanently installed in ground. Optional mount plate covers are available also. The posts are manufactured from 3-1/2", 4-1/2" or 5-9/16" O.D. heavy-duty steel. The interior rails are manufactured of 1-5/8" O.D. galvanized steel. Caps are made from aluminum.

Finish: Powder Coated Standard COLOR: HUNTER GREEN

Mounting Options:
 DC1: 1 piece
 DC2: 2 piece
 M1: Permanent Mount
 M3: Round Surface Mount

12

CROSSWALK STRIPING
 N.T.S.

8

SEWER INLET MARKINGS
 N.T.S.

NOTE: THE CITY WILL ONLY ALLOW THE MARKINGS AND ADHESIVE PROCEDURES SHOWN IN THIS TABLE OR AN APPROVED EQUAL BY ALMETEK INDUSTRIES. "PEEL AND STICK" ADHESIVE PADS WILL NOT BE ALLOWED.

MANUFACTURING	SIZE	ADHESIVE	STYLE	MESSAGE (PART #)	WEBSITE
ACP INTERNATIONAL	3 7/8"	EPOXY	CRYSTAL CAP	NO DUMPING DRAINS TO WATERWAYS (SD-W-CC)	WWW.ACPINTERNATIONAL.COM
DAS MANUFACTURING, INC	4"	EPOXY	STANDARD STYLE	NO DUMPING DRAINS TO STREAM (#SDS)	WWW.DASMANUFACTURING.COM

15

MULTI-USE TRAIL
 N.T.S.

16

BIKE RACK
 N.T.S.

Specifications:
 The Cambridge Bike Rack is a heavy-duty, welded rail bike rack that accommodates 6 bikes. It can be accessed as either a single or double side load. It can be surface mounted or permanently installed in ground. Optional mount plate covers are available also. The posts are manufactured from 3-1/2", 4-1/2" or 5-9/16" O.D. heavy-duty steel. The interior rails are manufactured of 1-5/8" O.D. galvanized steel. Caps are made from aluminum.

Finish: Powder Coated Standard COLOR: HUNTER GREEN

Mounting Options:
 DC1: 1 piece
 DC2: 2 piece
 M1: Permanent Mount
 M3: Round Surface Mount

12

CROSSWALK STRIPING
 N.T.S.

8

SEWER INLET MARKINGS
 N.T.S.

NOTE: THE CITY WILL ONLY ALLOW THE MARKINGS AND ADHESIVE PROCEDURES SHOWN IN THIS TABLE OR AN APPROVED EQUAL BY ALMETEK INDUSTRIES. "PEEL AND STICK" ADHESIVE PADS WILL NOT BE ALLOWED.

MANUFACTURING	SIZE	ADHESIVE	STYLE	MESSAGE (PART #)	WEBSITE
ACP INTERNATIONAL	3 7/8"	EPOXY	CRYSTAL CAP	NO DUMPING DRAINS TO WATERWAYS (SD-W-CC)	WWW.ACPINTERNATIONAL.COM
DAS MANUFACTURING, INC	4"	EPOXY	STANDARD STYLE	NO DUMPING DRAINS TO STREAM (#SDS)	WWW.DASMANUFACTURING.COM

15

MULTI-USE TRAIL
 N.T.S.

16

BIKE RACK
 N.T.S.

Specifications:
 The Cambridge Bike Rack is a heavy-duty, welded rail bike rack that accommodates 6 bikes. It can be accessed as either a single or double side load. It can be surface mounted or permanently installed in ground. Optional mount plate covers are available also. The posts are manufactured from 3-1/2", 4-1/2" or 5-9/16" O.D. heavy-duty steel. The interior rails are manufactured of 1-5/8" O.D. galvanized steel. Caps are made from aluminum.

Finish: Powder Coated Standard COLOR: HUNTER GREEN

Mounting Options:
 DC1: 1 piece
 DC2: 2 piece
 M1: Permanent Mount
 M3: Round Surface Mount

12

CROSSWALK STRIPING
 N.T.S.

8

SEWER INLET MARKINGS
 N.T.S.

NOTE: THE CITY WILL ONLY ALLOW THE MARKINGS AND ADHESIVE PROCEDURES SHOWN IN THIS TABLE OR AN APPROVED EQUAL BY ALMETEK INDUSTRIES. "PEEL AND STICK" ADHESIVE PADS WILL NOT BE ALLOWED.

MANUFACTURING	SIZE	ADHESIVE	STYLE	MESSAGE (PART #)	WEBSITE
ACP INTERNATIONAL	3 7/8"	EPOXY	CRYSTAL CAP	NO DUMPING DRAINS TO WATERWAYS (SD-W-CC)	WWW.ACPINTERNATIONAL.COM
DAS MANUFACTURING, INC	4"	EPOXY	STANDARD STYLE	NO DUMPING DRAINS TO STREAM (#SDS)	WWW.DASMANUFACTURING.COM

15

MULTI-USE TRAIL
 N.T.S.

16

BIKE RACK
 N.T.S.

Specifications:
 The Cambridge Bike Rack is a heavy-duty, welded rail bike rack that accommodates 6 bikes. It can be accessed as either a single or double side load. It can be surface mounted or permanently installed in ground. Optional mount plate covers are available also. The posts are manufactured from 3-1/2", 4-1/2" or 5-9/16" O.D. heavy-duty steel. The interior rails are manufactured of 1-5/8" O.D. galvanized steel. Caps are made from aluminum.

Finish: Powder Coated Standard COLOR: HUNTER GREEN

Mounting Options:
 DC1: 1 piece
 DC2: 2 piece
 M1: Permanent Mount
 M3: Round Surface Mount

12

CROSSWALK STRIPING
 N.T.S.

8

SEWER INLET MARKINGS
 N.T.S.

NOTE: THE CITY WILL ONLY ALLOW THE MARKINGS AND ADHESIVE PROCEDURES SHOWN IN THIS TABLE OR AN APPROVED EQUAL BY ALMETEK INDUSTRIES. "PEEL AND STICK" ADHESIVE PADS WILL NOT BE ALLOWED.

MANUFACTURING	SIZE	ADHESIVE	STYLE	MESSAGE (PART #)	WEBSITE
ACP INTERNATIONAL	3 7/8"	EPOXY	CRYSTAL CAP	NO DUMPING DRAINS TO WATERWAYS (SD-W-CC)	WWW.ACPINTERNATIONAL.COM
DAS MANUFACTURING, INC	4"	EPOXY	STANDARD STYLE	NO DUMPING DRAINS TO STREAM (#SDS)	WWW.DASMANUFACTURING.COM

15

MULTI-USE TRAIL
 N.T.S.

16

BIKE RACK
 N.T.S.

Specifications:
 The Cambridge Bike Rack is a heavy-duty, welded rail bike rack that accommodates 6 bikes. It can be accessed as either a single or double side load. It can be surface mounted or permanently installed in ground. Optional mount plate covers are available also. The posts are manufactured from 3-1/2", 4-1/2" or 5-9/16" O.D. heavy-duty steel. The interior rails are manufactured of 1-5/8" O.D. galvanized steel. Caps are made from aluminum.

Finish: Powder Coated Standard COLOR: HUNTER GREEN

Mounting Options:
 DC1: 1 piece
 DC2: 2 piece
 M1: Permanent Mount
 M3: Round Surface Mount

12

CROSSWALK STRIPING
 N.T.S.

8

SEWER INLET MARKINGS
 N.T.S.

NOTE: THE CITY WILL ONLY ALLOW THE MARKINGS AND ADHESIVE PROCEDURES SHOWN IN THIS TABLE OR AN APPROVED EQUAL BY ALMETEK INDUSTRIES. "PEEL AND STICK" ADHESIVE PADS WILL NOT BE ALLOWED.

MANUFACTURING	SIZE	ADHESIVE	STYLE	MESSAGE (PART #)	WEBSITE
ACP INTERNATIONAL	3 7/8"	EPOXY	CRYSTAL CAP	NO DUMPING DRAINS TO WATERWAYS (SD-W-CC)	WWW.ACPINTERNATIONAL.COM
DAS MANUFACTURING, INC	4"	EPOXY	STANDARD STYLE	NO DUMPING DRAINS TO STREAM (#SDS)	WWW.DASMANUFACTURING.COM

15

MULTI-USE TRAIL
 N.T.S.

16

BIKE RACK
 N.T.S.

Specifications:
 The Cambridge Bike Rack is a heavy-duty, welded rail bike rack that accommodates 6 bikes. It can be accessed as either a single or double side load. It can be surface mounted or permanently installed in ground. Optional mount plate covers are available also. The posts are manufactured from 3-1/2", 4-1/2" or 5-9/16" O.D. heavy-duty steel. The interior rails are manufactured of 1-5/8" O.D. galvanized steel. Caps are made from aluminum.

Finish: Powder Coated Standard COLOR: HUNTER GREEN

Mounting Options:
 DC1: 1 piece
 DC2: 2 piece
 M1: Permanent Mount
 M3: Round Surface Mount

12

CROSSWALK STRIPING
 N.T.S.