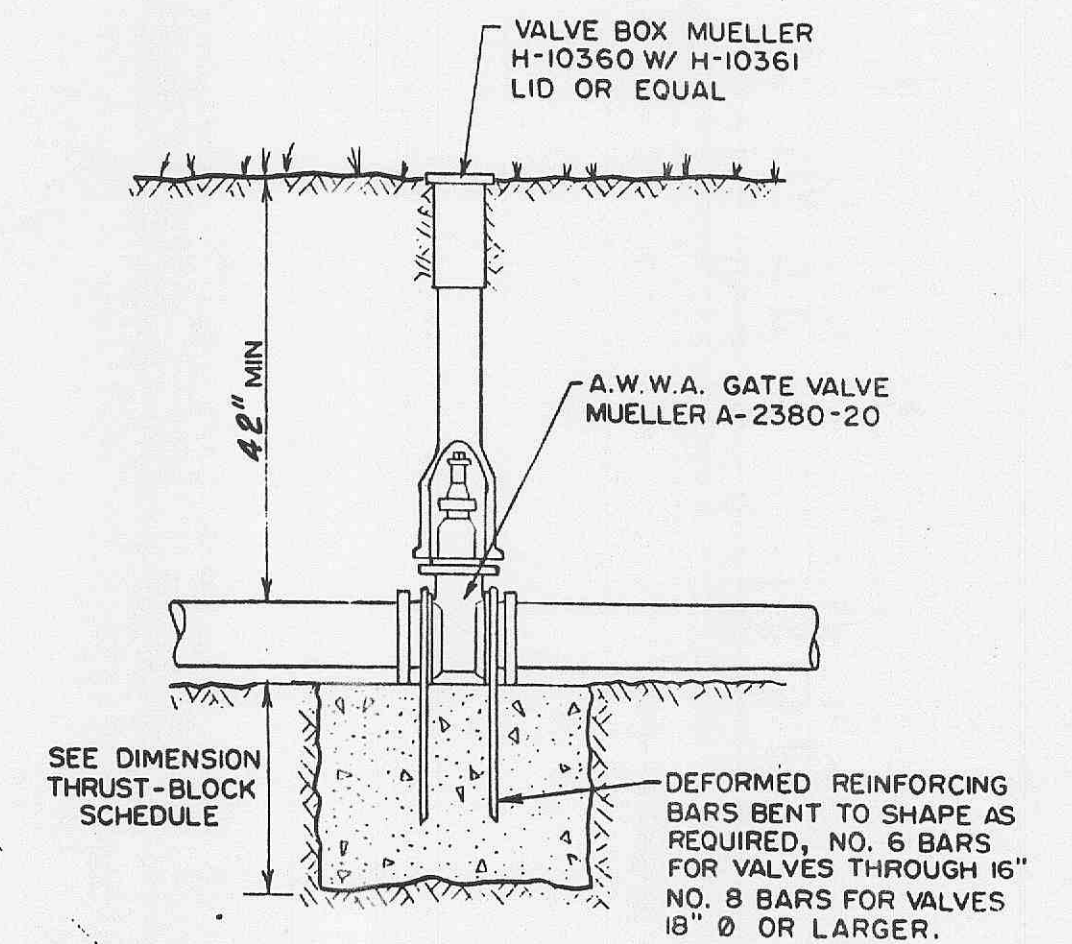
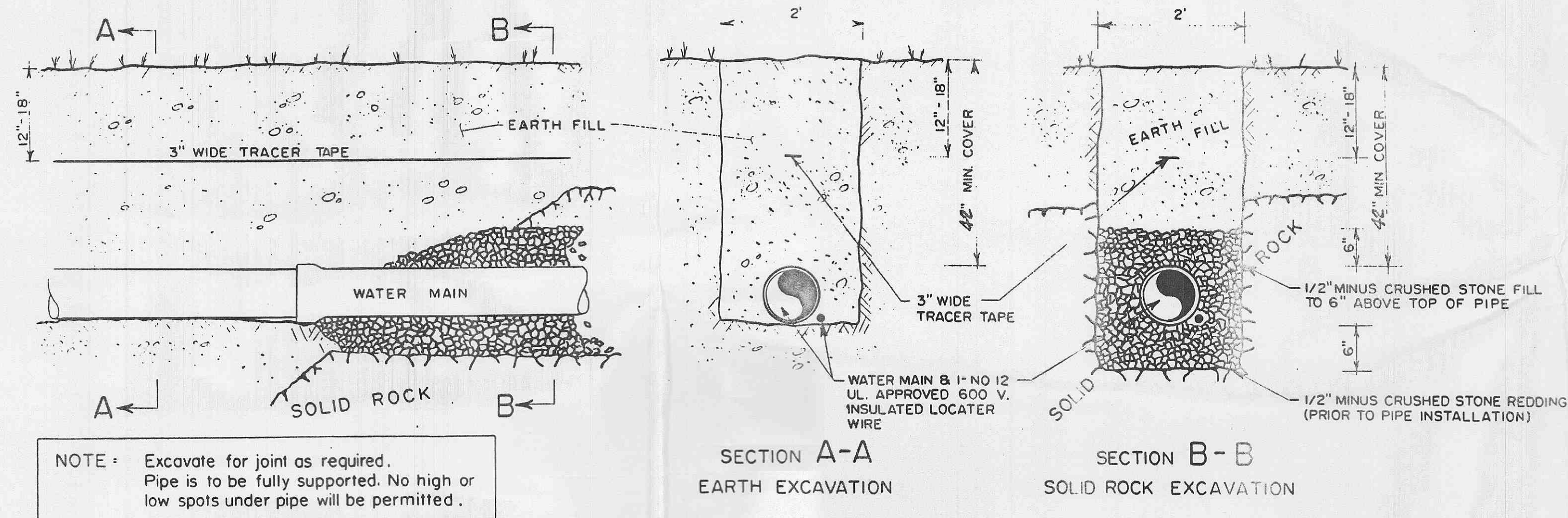


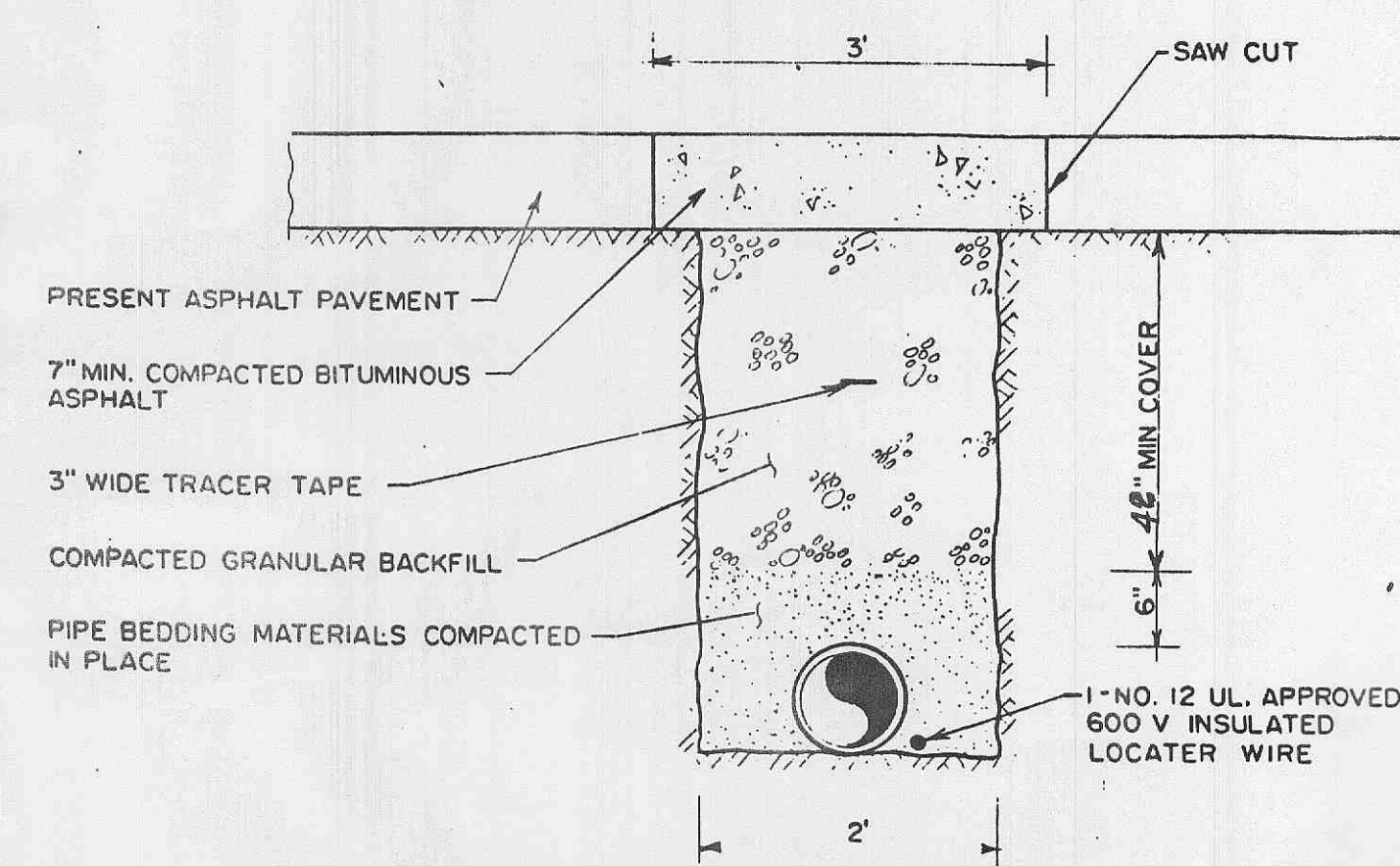
FIRE HYDRANT INSTALLATION DETAIL
WITH AUXILIARY VALVE
NO SCALE



GATE VALVE
W/ THRUST-BLOCK
NO SCALE



TYPICAL WATER MAIN TRENCHING DETAILS
NO SCALE

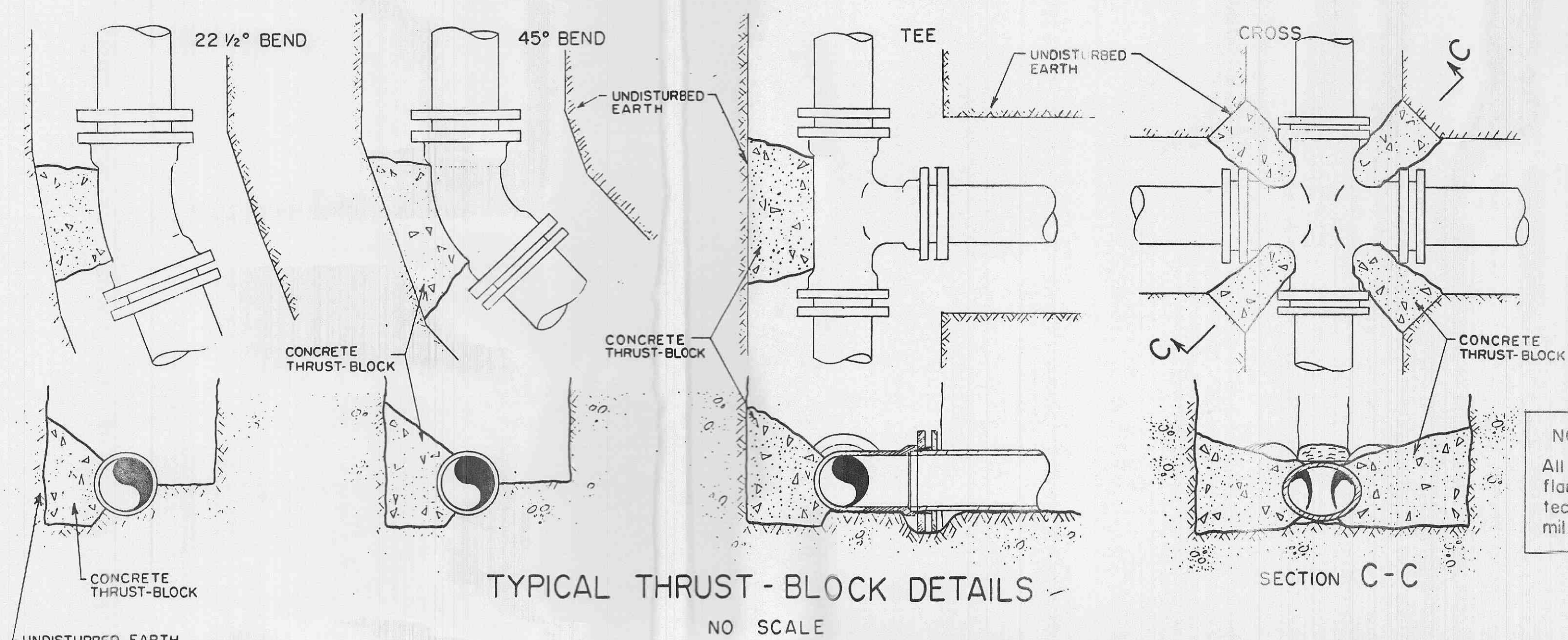


TYPICAL PAVED STREET OR ROAD TRENCH,
BACKFILL & SURFACE REPLACEMENT DETAIL
NO SCALE

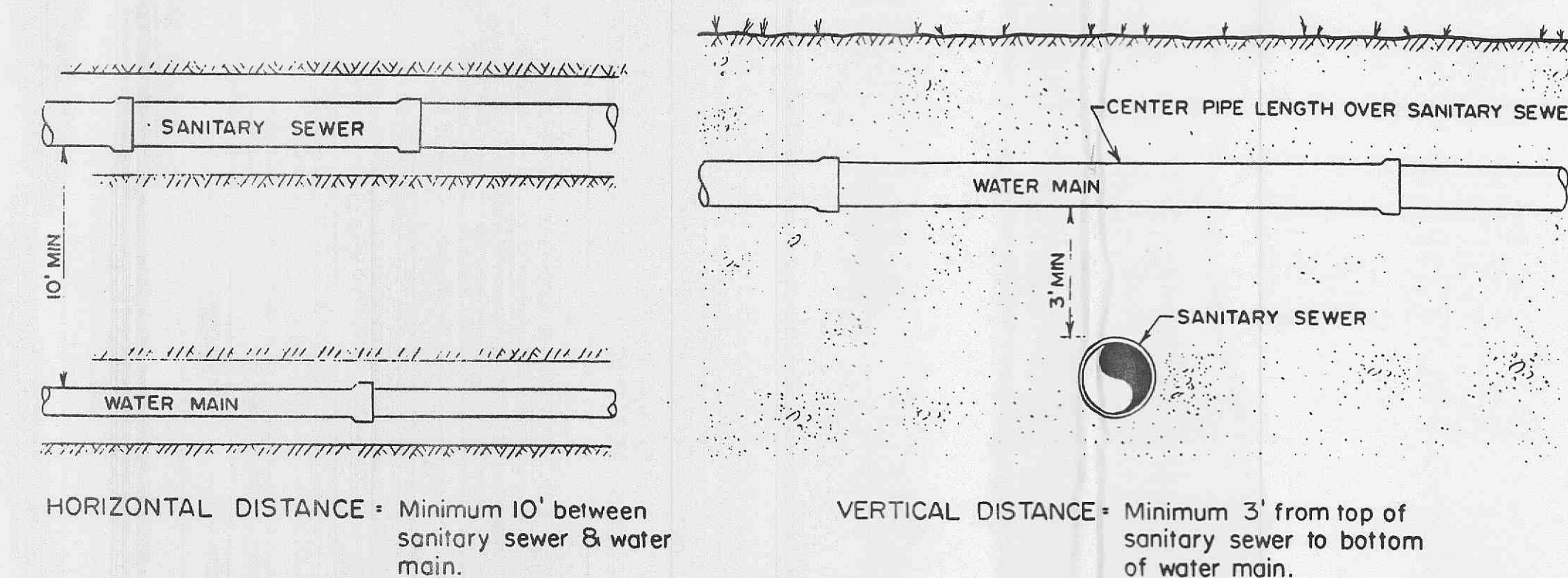
THRUST-BLOCK SCHEDULE

Minimum thrust-block bearing dimensions to bear against undisturbed earth.

WATER MAIN SIZE	BEND 45°	BEND 22 1/2°	TEE	VALVE	CROSS
2"	0.5' x 1'	0.5' x 1'	0.5' x 1'	0.5' x 1'	0.5' x 1'
4"	1' x 1'	1' x 1'	2' x 1'	2' x 1'	1' x 1'
6"	1.5' x 1'	1' x 1'	2' x 1'	2' x 1'	1' x 1'
8"	2' x 1'	1' x 1'	2' x 2.5'	2' x 2'	1' x 1.5'
10"	2' x 2.5'	1.5' x 2'	2' x 3.5'	2' x 3'	2' x 2'
12"	2' x 3.5'	1.5' x 2.5'	3' x 3.5'	3' x 3'	2' x 3'
16"	3' x 4'	2' x 3'	4' x 4.5'	3' x 4.5'	3' x 3.5'
18"	3' x 4.5'	2' x 3.5'	5' x 6.5'	4' x 5'	4' x 4.5'



TYPICAL THRUST-BLOCK DETAILS
NO SCALE



TYPICAL WATER & SEWER SEPARATION
NO SCALE

LEGEND

SYMBOL	WATER MAIN
---	2" W.M.
---	4" W.M.
---	6" W.M.
---	8" W.M.
---	10" W.M.
---	12" W.M.
---	16" W.M.
---	18" W.M.
---	EXISTING W.M.
---	NEW W.M.