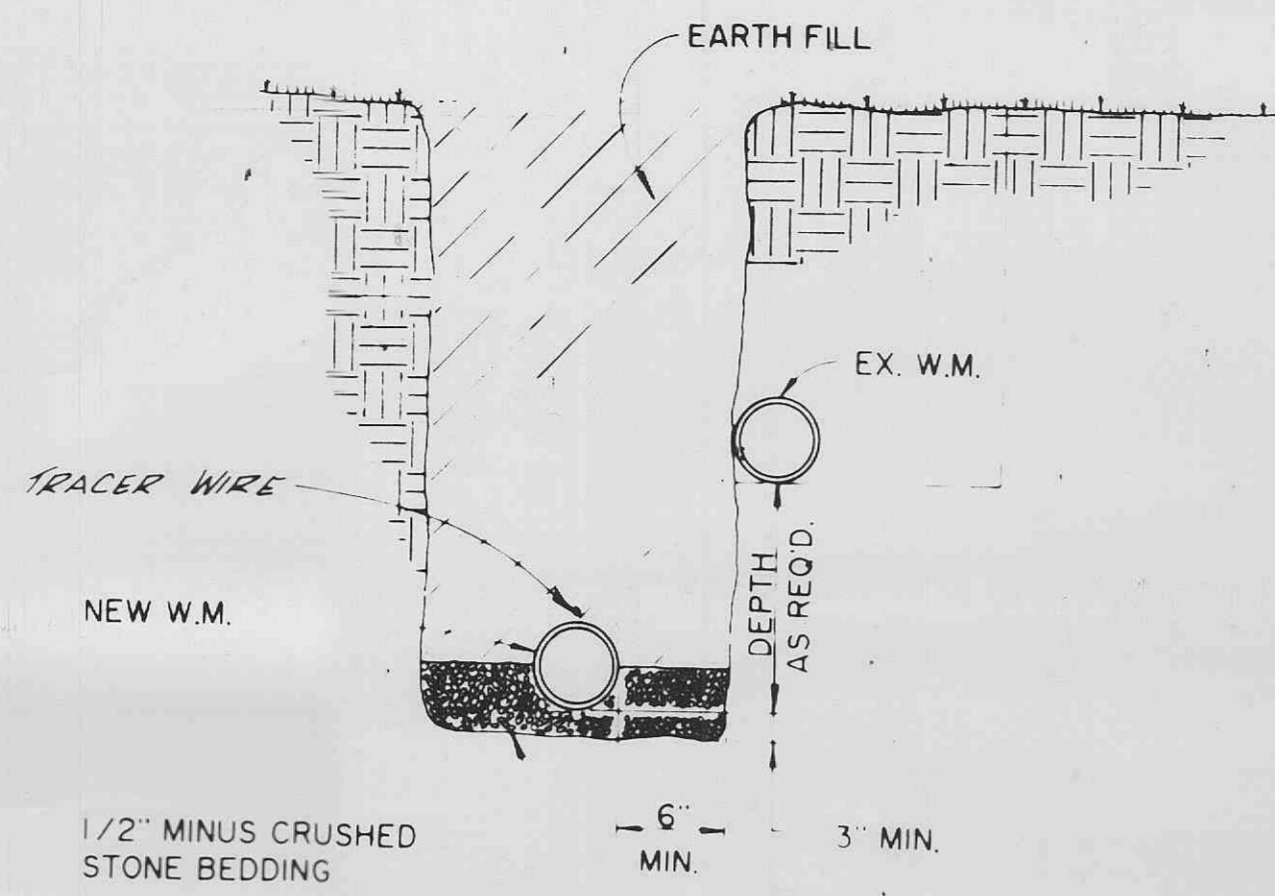
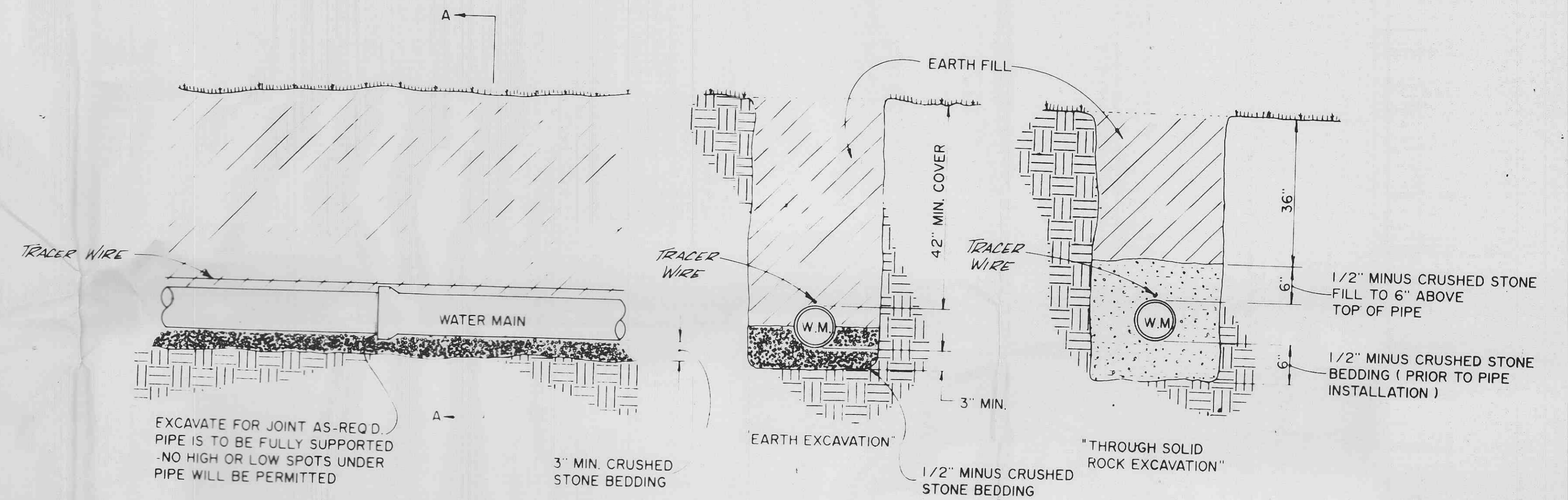


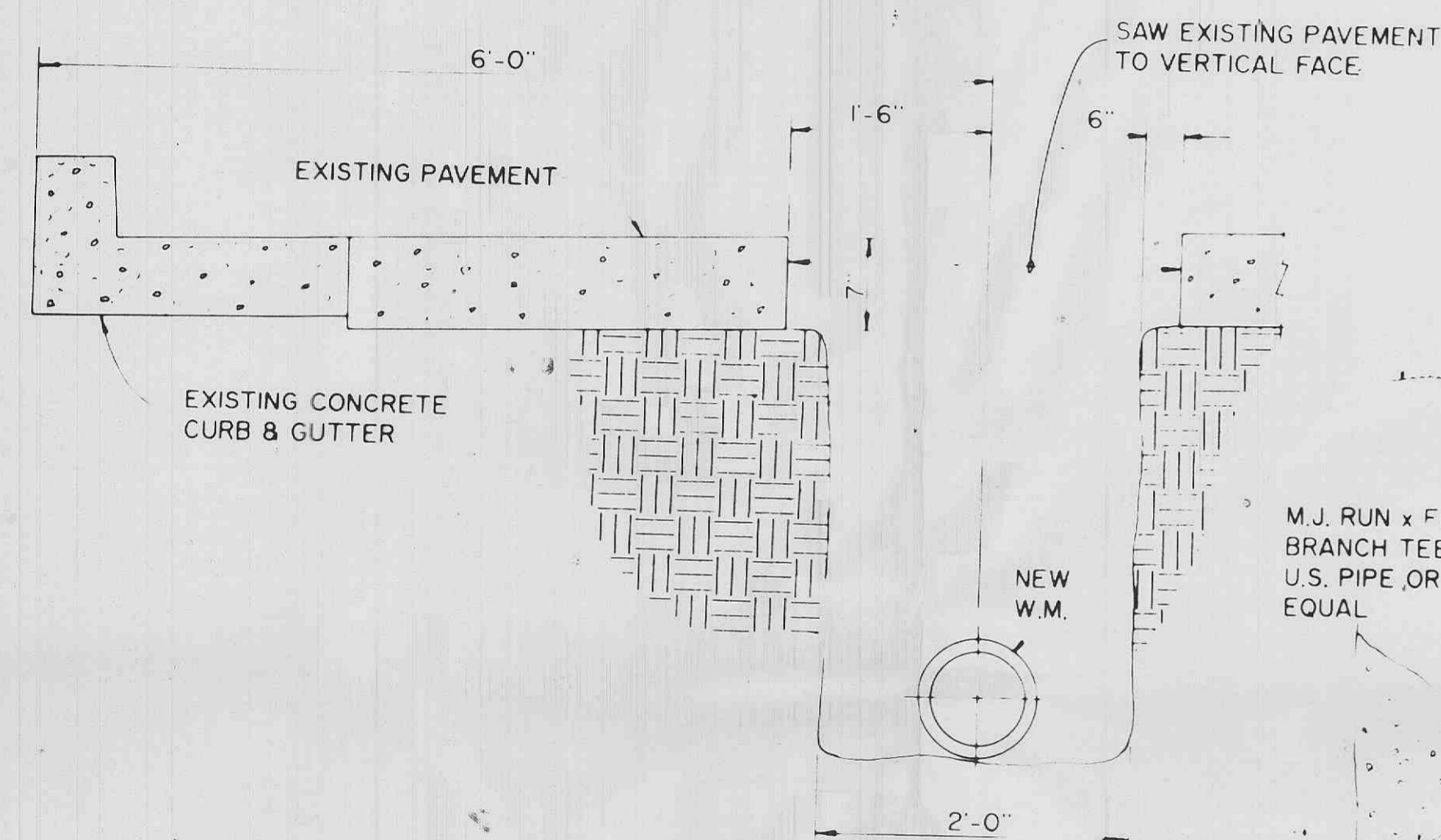
TYPICAL PAVED STREET OR ROAD TRENCH BACKFILL & SURFACE REPLACEMENT DETAIL
N.T.S.



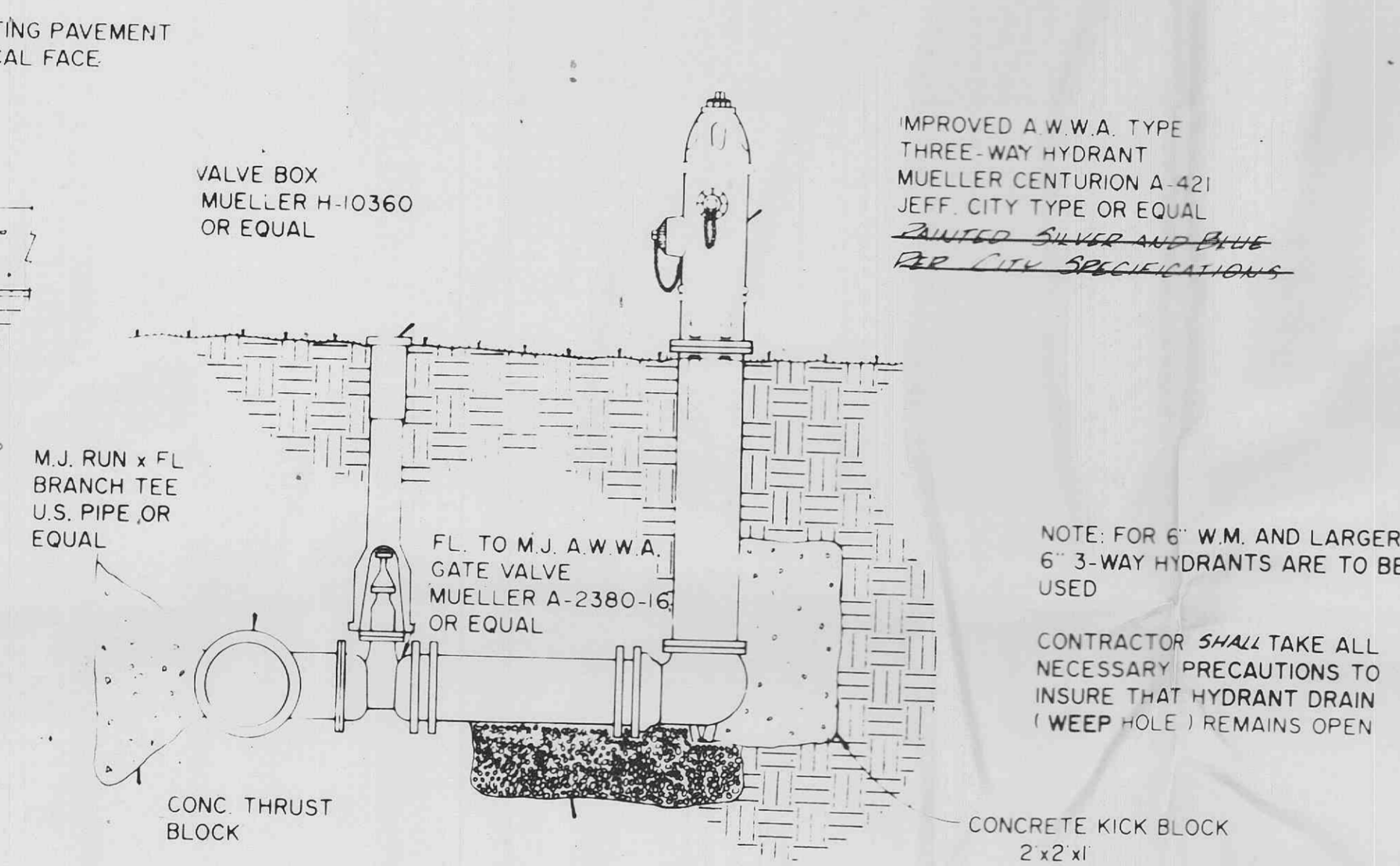
TYPICAL WATER MAIN LOWERING DETAIL
N.T.S.



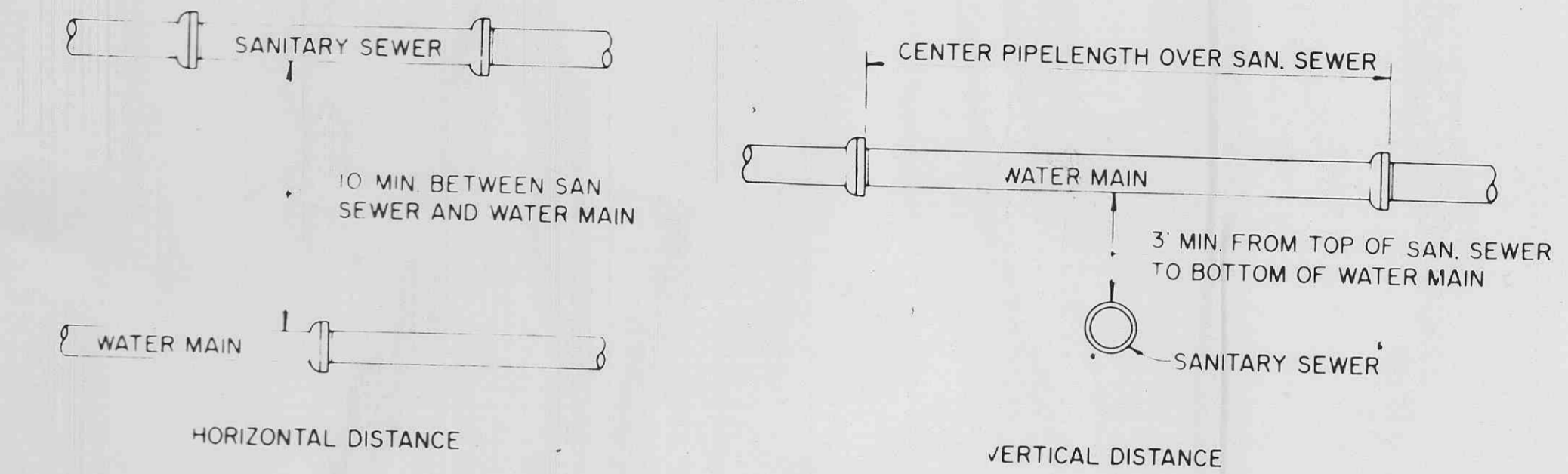
TYPICAL WATER MAIN INSTALLATION DETAIL
N.T.S.



TYPICAL TRENCH EXCAVATION IN PAVED STREETS
N.T.S.



FIRE HYDRANT INTALLATION DETAIL
N.T.S.

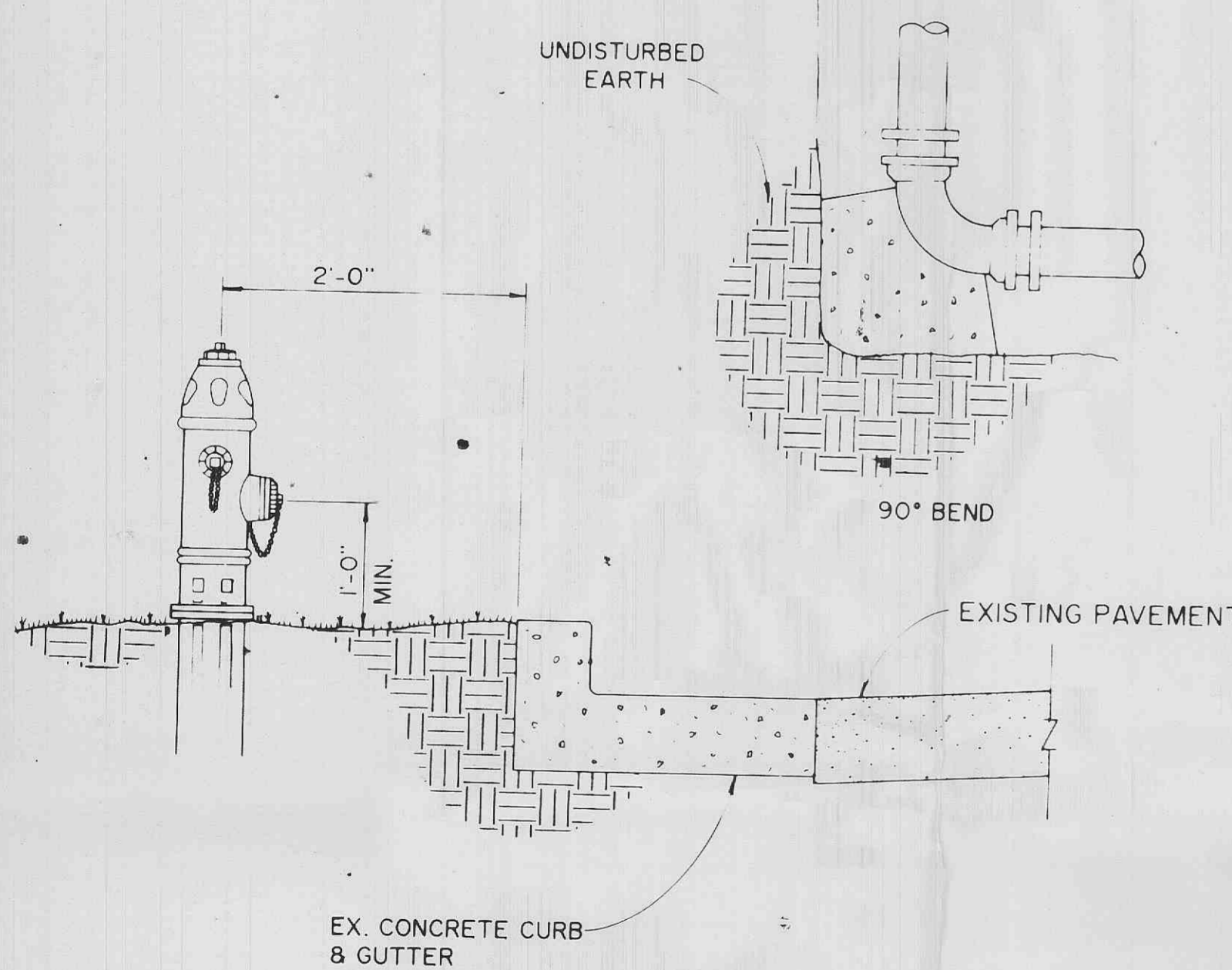


TYPICAL WATER & SEWER SEPARATION
N.T.S.

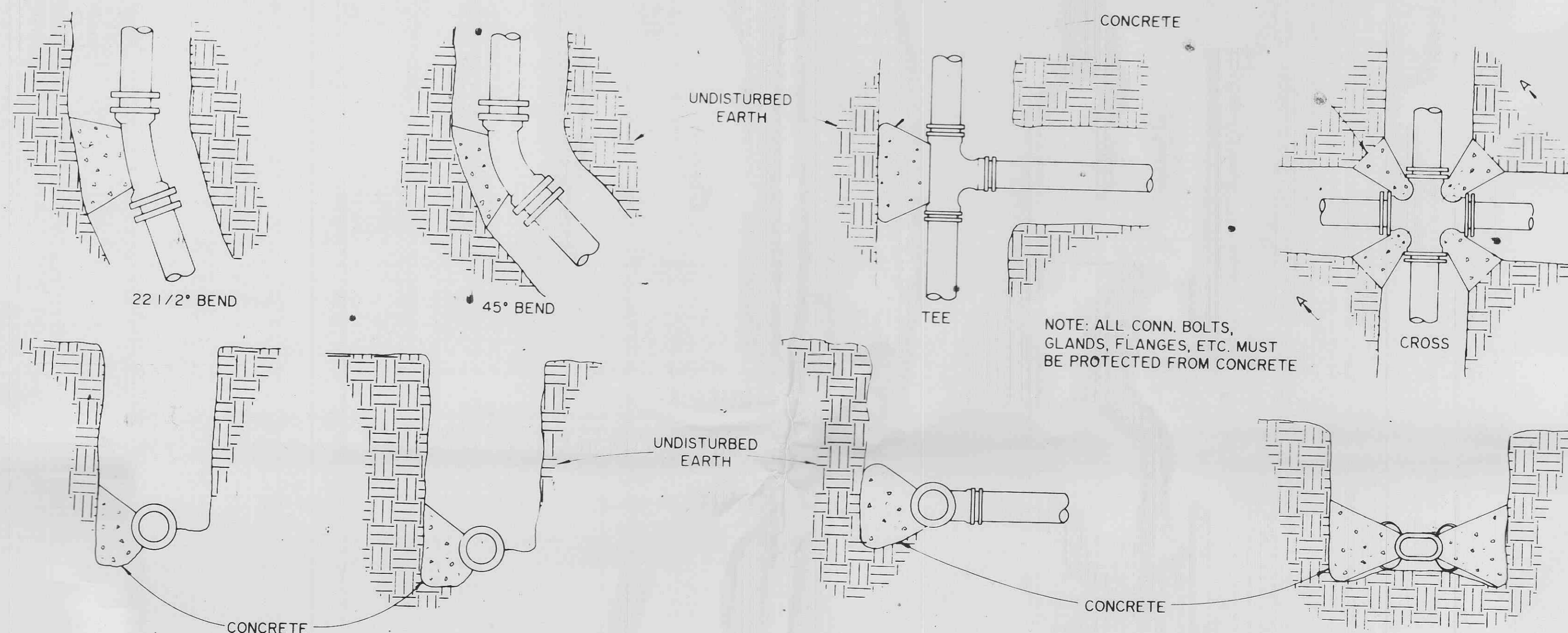
MAIN SIZE	MIN. THRUST BLOCK BEARING DIMENSIONS TO BEAR AGAINST UNDISTURBED EARTH				
	90°	45°	22 1/2°	TEE	CROSS
4"	1x2	1x1	1x1	2x1	1x1
6"	1.5x3	1.5x2.5	1x1.5	2x1.5	1x1.5
8"	2x4	2x2.5	1x2	2x2.5	2x2.5
10"	3x4	2x2.5	1.5x2	2x3.5	2x3

THRUST BLOCK SCHEDULE

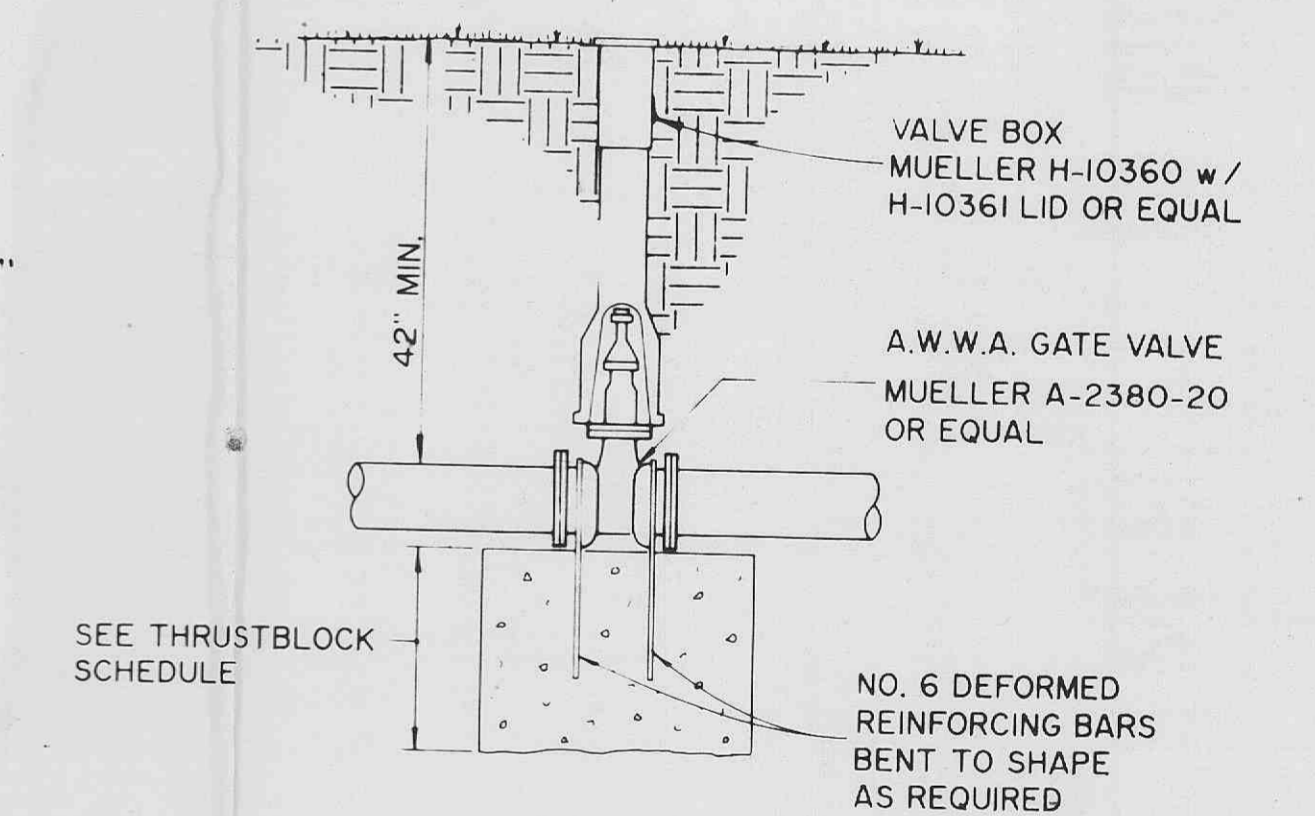
NOTE: WATERLINES SHALL BE INSTALLED WITH A #12 SOLID COPPER INSULATED TRACER WIRE.



TYPICAL FIRE HYDRANT LOCATION DETAIL
N.T.S.



TYPICAL THRUST BLOCK DETAILS
N.T.S.



GATE VALVE w/ THRUST BLOCK DETAIL
N.T.S.