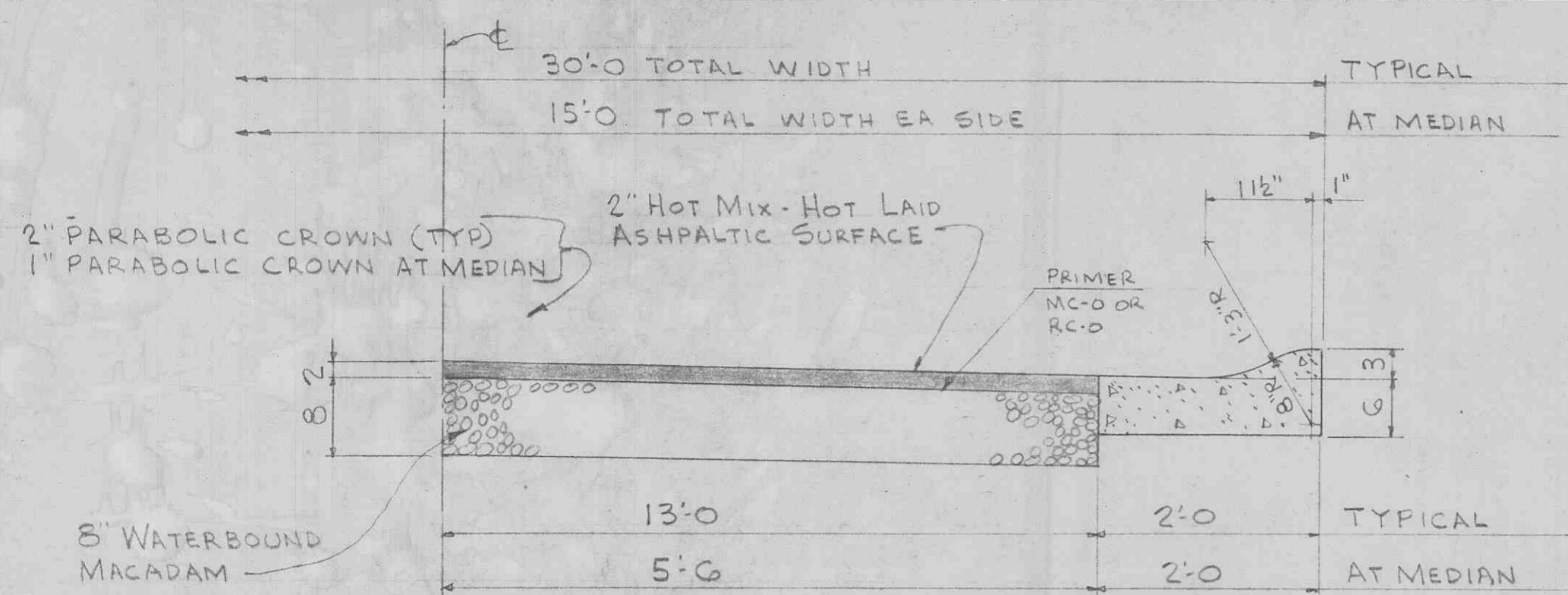
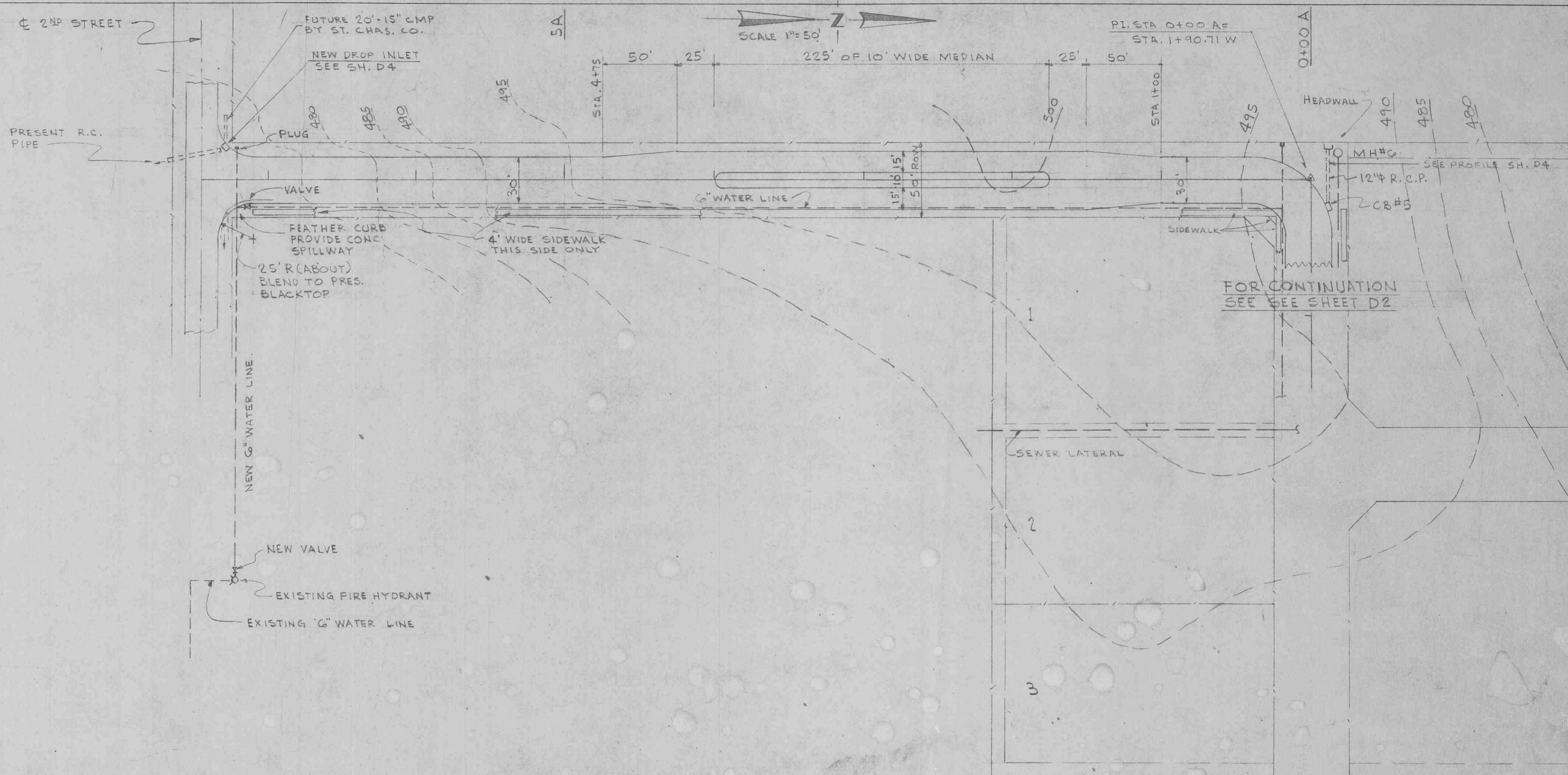


DATE: _____
 BY: _____
 SURVEYED _____
 PLOTTED _____
 GRADES CHECKED _____
 STRUCTURE NOTATIONS CHECKED _____
 NOTE BOOK No. _____
 PLAN



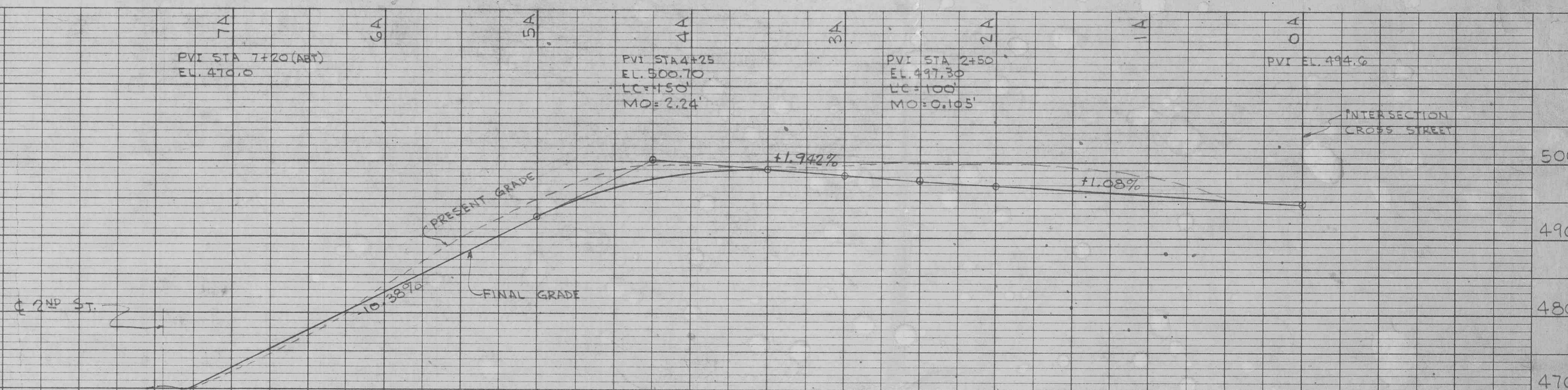
FOR ADDITIONAL SECTIONS SEE SHEET D3.
TYPICAL STREET PAVING
 PAVEMENT, WATERBOUND MACADAM, AND CURB TO BE CONSTRUCTED IN ACCORDANCE CITY OF OFALLON SPECIFICATIONS.



DATE: _____
 BY: _____
 SURVEYED _____
 PLOTTED _____
 GRADES CHECKED _____
 STRUCTURE NOTATIONS CHECKED _____
 NOTE BOOK No. _____
 PROFILE

GENERAL NOTES:

1. MANHOLES FOR SANITARY SEWER TO BE STD. BRICK WITH C.I. FRAME, COVER, STEPS.
2. CATCH BASINS TO BE STANDARD BRICK MANHOLE TYPE WITH 5" THICK PRECAST REINF. CONC. TOP, RC. SILLS, STD. CI MANHOLE COVER AND STEPS.
3. SIDEWALKS TO HAVE CRACKER JOINTS AT 4' CTRS. AND EXP. JTS. AT 20' CTRS.
4. DETAILS AND LOCATION OF GAS LINES AND ELECTRIC LINES BY OTHERS.
5. OXIGEST PLANT AS APPROVED BY MO. WATER POLLUTION BOARD WILL SERVE A POPULATION OF 60. WHEN 2ND 5000 GAL PLANT IS INSTALLED THE FACILITY WILL SERVE A POP. OF 120. CONSTRUCTION PERMIT #E-2530.
6. WATER LINE APPROVED BY MO. INSP. BUREAU.



NOTE: GRADE OF -10.38% APPROVED BY THE BOARD OF ALDERMEN MAY 2, 1968. OWNER AGREED TO PROVIDE SIDEWALKS ON EAST SIDE STA. 7A TO STA. 15A AND ON BOTH SIDES OF STREET FOR REMAINDER OF PROJECT.

REFERENCE:
 PLAT OF SUBDIVISION RECORDED 5/3/67

NORTH WIND ESTATES
 O'FALLON, MISSOURI

PLAN PROFILE
 STREETS, SEWERS, WATER LINE

DWN. J.G.
 SEPT. 1967

DWG. NO.
 D1

NORTH WINDS