

KEY PLAN

C	D
B	E
A	F

Issuances

No.	Description	Date
01	PRICING SET	04/18/17
02	PRELIM P&Z	04/28/17
03	P&Z RESUBMIT	05/17/17
04	100% DD SET	05/31/17
05	50% CD SET	07/14/17
06	90% CD SET	08/01/17
07	PERMIT SET	08/18/17
08	PERMIT SET	09/22/17
09	PERMIT SET REVISIONS	10/04/17

Revisions

No.	Description	Date

SWT No. 20150.04

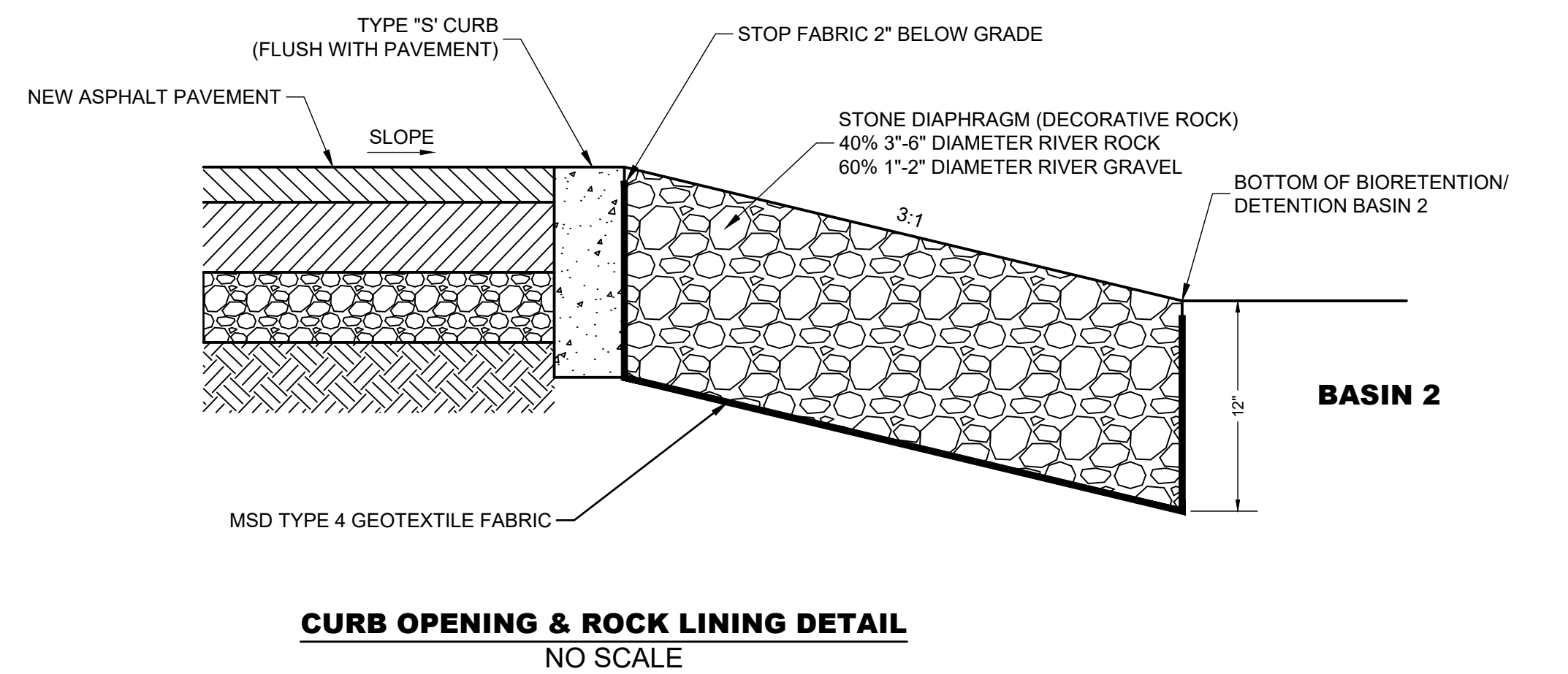
Drawn Reviewed

Sheet Title

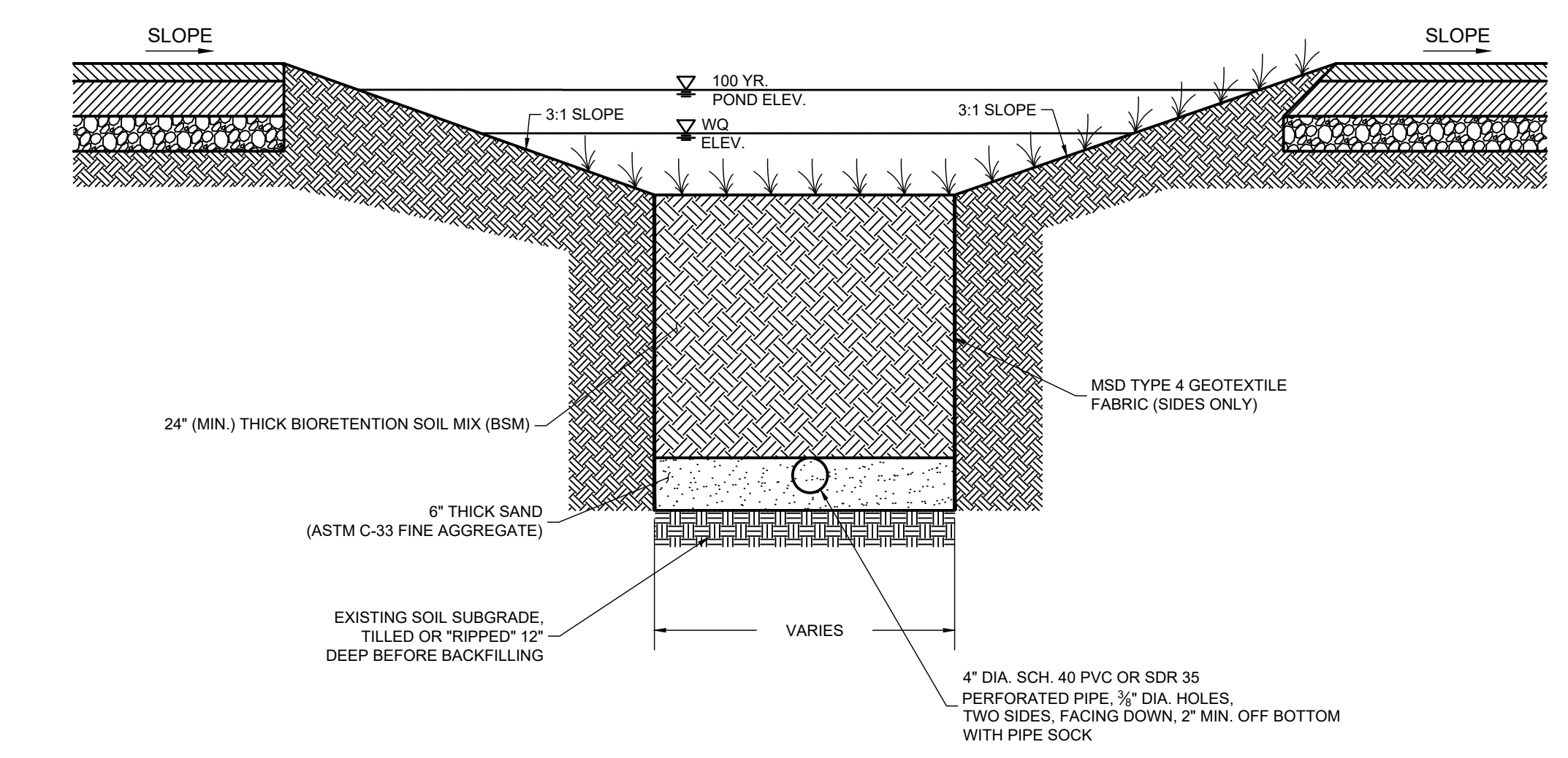
DETAILS

Number

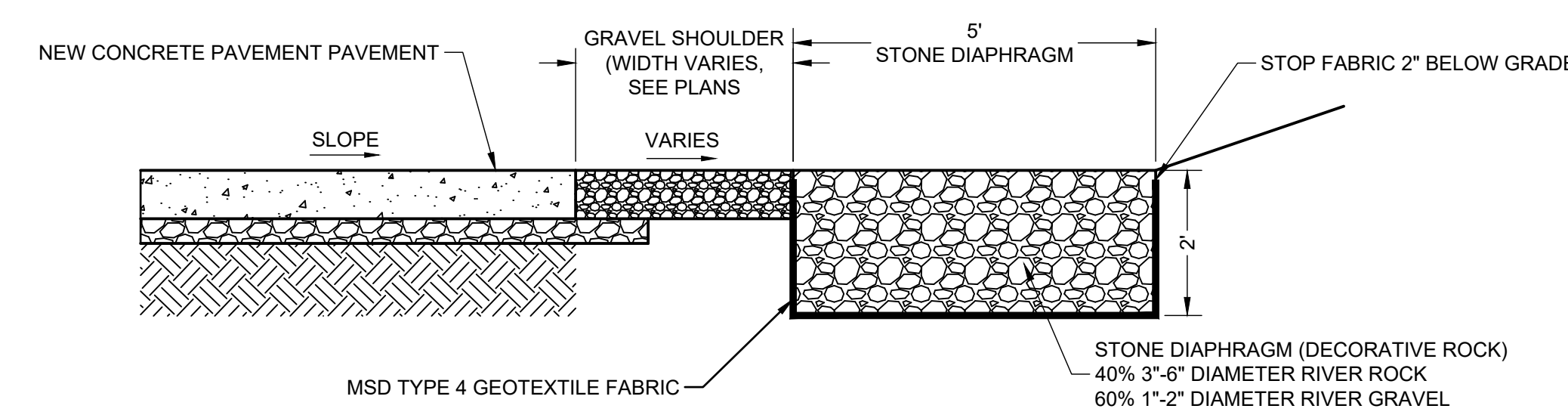
C-402



CURB OPENING & ROCK LINING DETAIL
NO SCALE



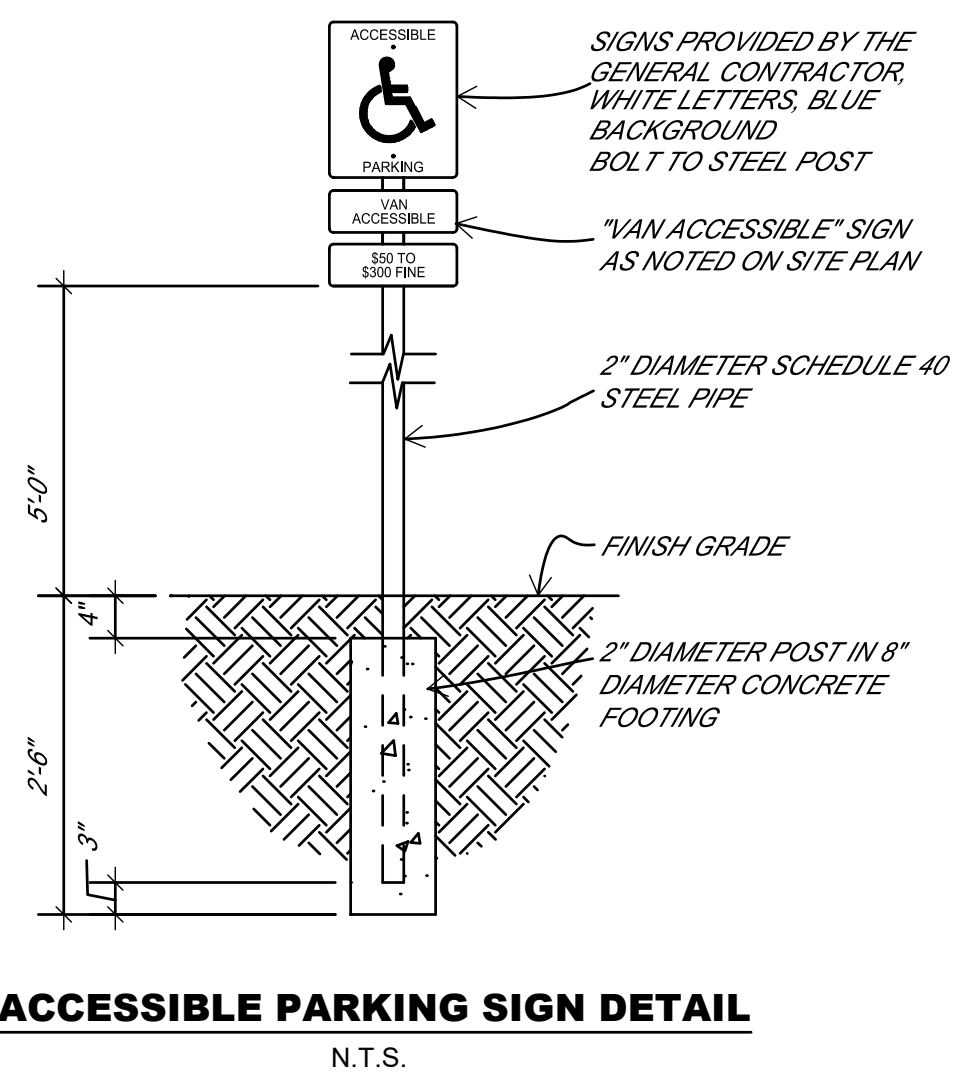
TYPICAL BIORETENTION BASIN FILTER BED DETAIL SECTION
N.T.S.



STONE DIAPHRAGM DETAIL (NEW MAINTENANCE BUILDING)
NO SCALE

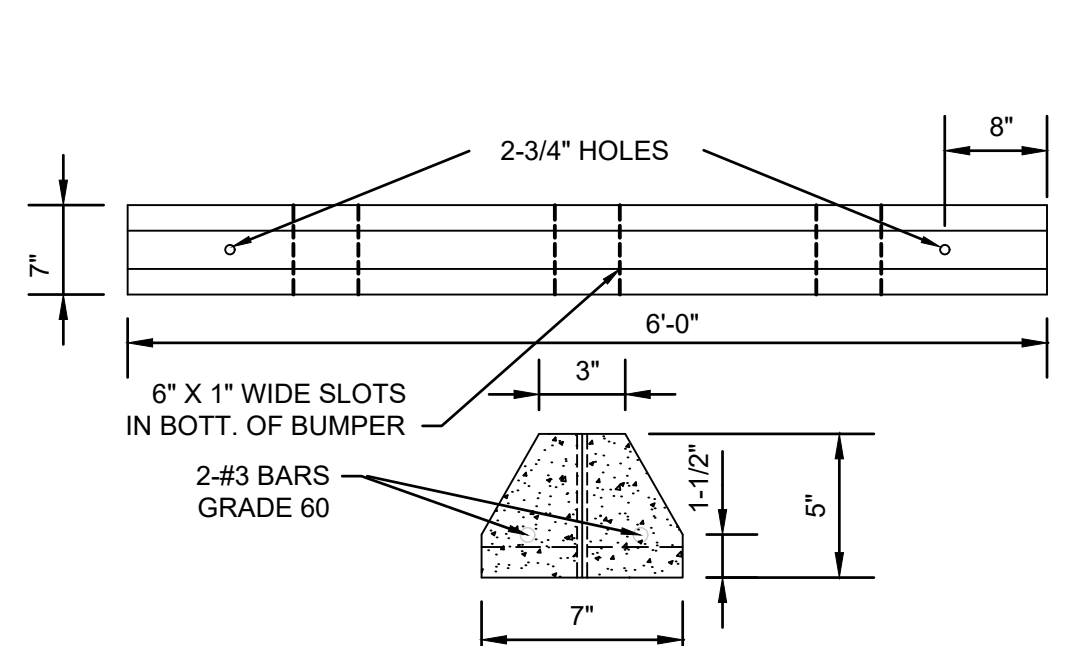


TYPICAL 12\"/>



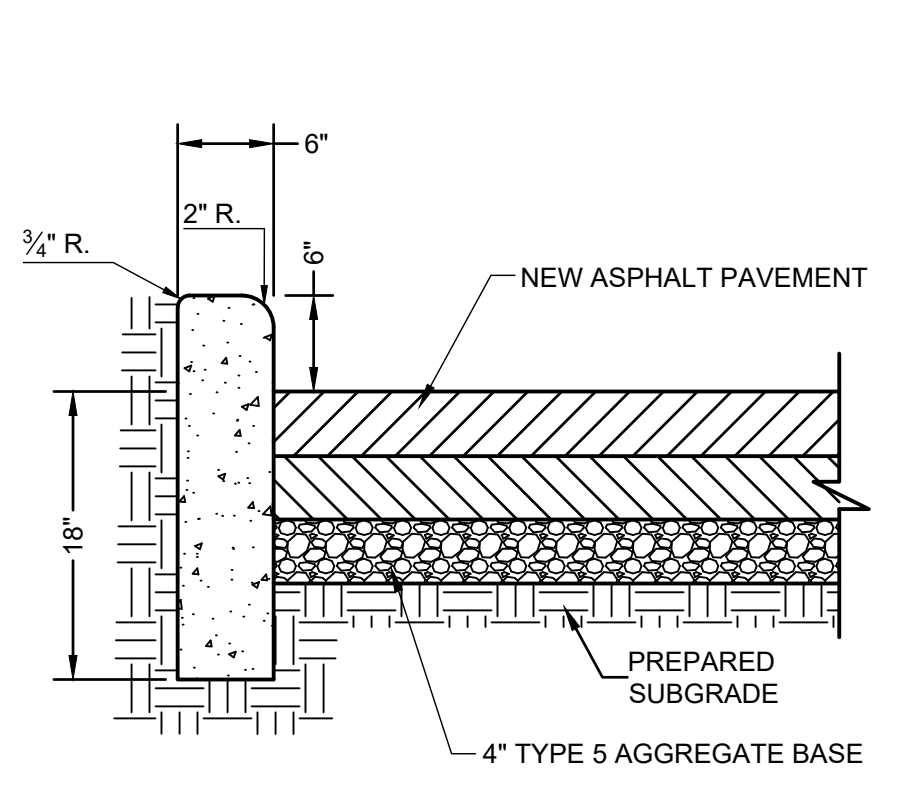
ACCESSIBLE PARKING SIGN DETAIL
N.T.S.

NOTE:
1. SIGN POSTS AND BACK SHALL BE PAINTED TO CONFORM TO NOTE RN #19 ON SHEET C-001.



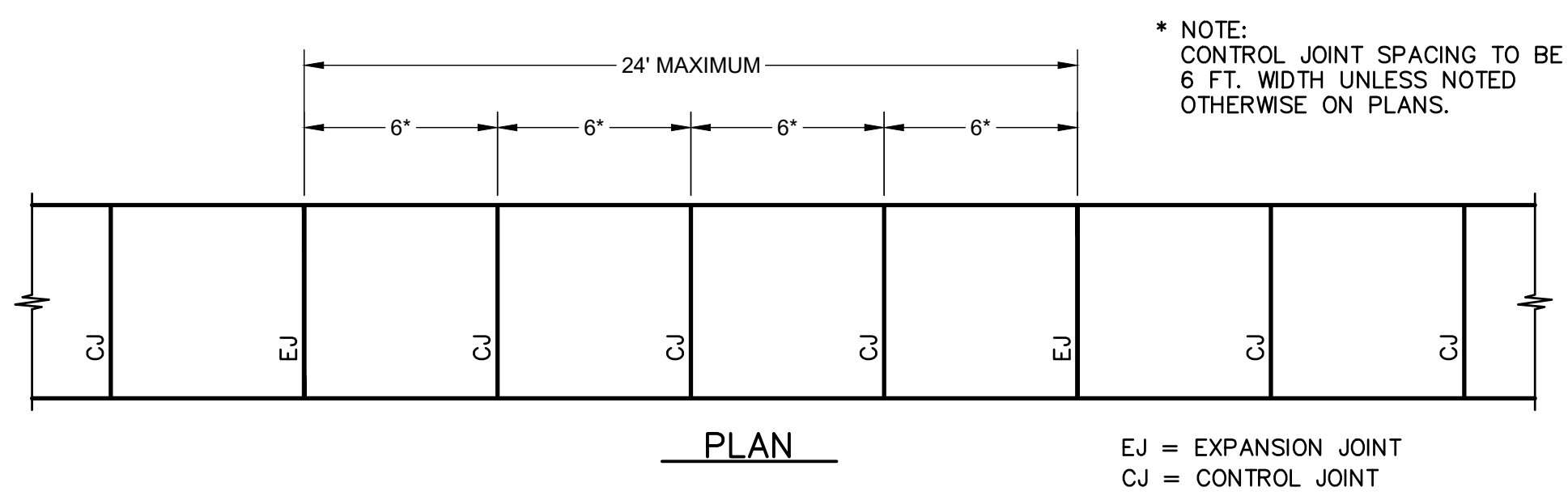
CONCRETE WHEEL STOP
N.T.S.

NOTES:
1. PORTLAND CEMENT CONCRETE SHALL HAVE THE FOLLOWING CHARACTERISTICS: 4000 PSI MIN. COMPRESSIVE STRENGTH @ 28 DAYS, 6-8 SACKS OF CEMENT PER CUBIC YARD WITH A MAX. WATER / CEMENT RATIO OF 0.45, AIR ENTRAINMENT 6.5% -1.5%, SLUMP AT 1-4 INCHES. ALL MATERIALS SHALL CONFORM TO SSPWC SECTION 202.
2. BUMPERS SHALL BE SECURED WITH 2-#3 BARS, EMBEDDED A MIN. OF 13\"/>



TYPE 'S' CONCRETE CURB
NO SCALE

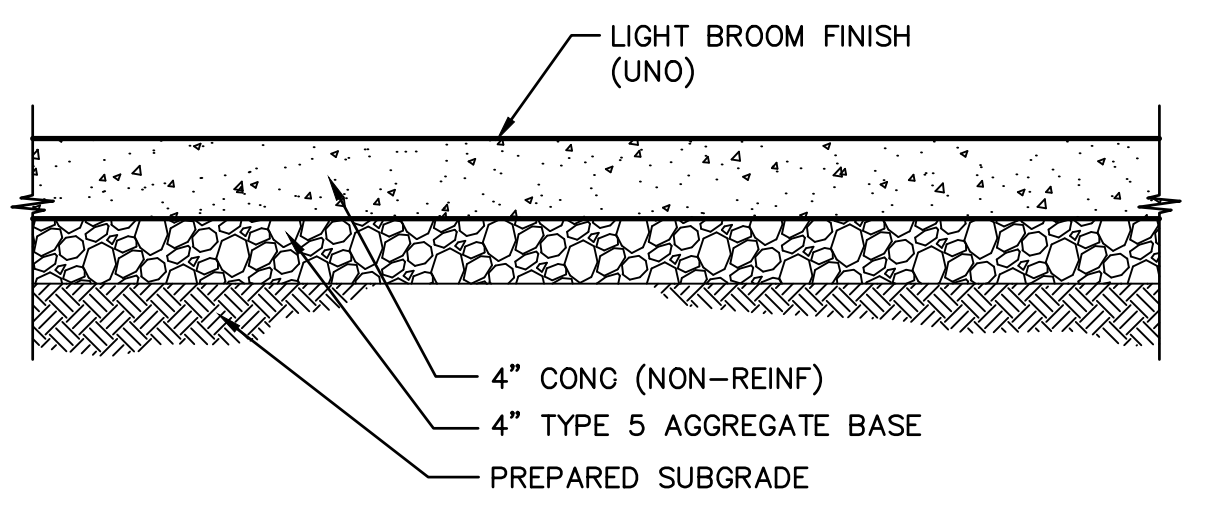
CONCRETE NOTES:
1. EXPANSION JOINTS SPACED AT 25' INTERVALS.
2. CONTROL JOINTS SPACED AT 5' INTERVALS TO ALIGN WITH SIDEWALK JOINTS. THESE SHALL BE SAWED AND SEALED OR PREFORMED CRACKER JOINTS.
3. PLACE METAL KEYWAY AND BENT BARS AT EXPANSION JOINTS.



PLAN

EJ = EXPANSION JOINT
CJ = CONTROL JOINT

* NOTE:
CONTROL JOINT SPACING TO BE 6 FT. WIDTH UNLESS NOTED OTHERWISE ON PLANS.

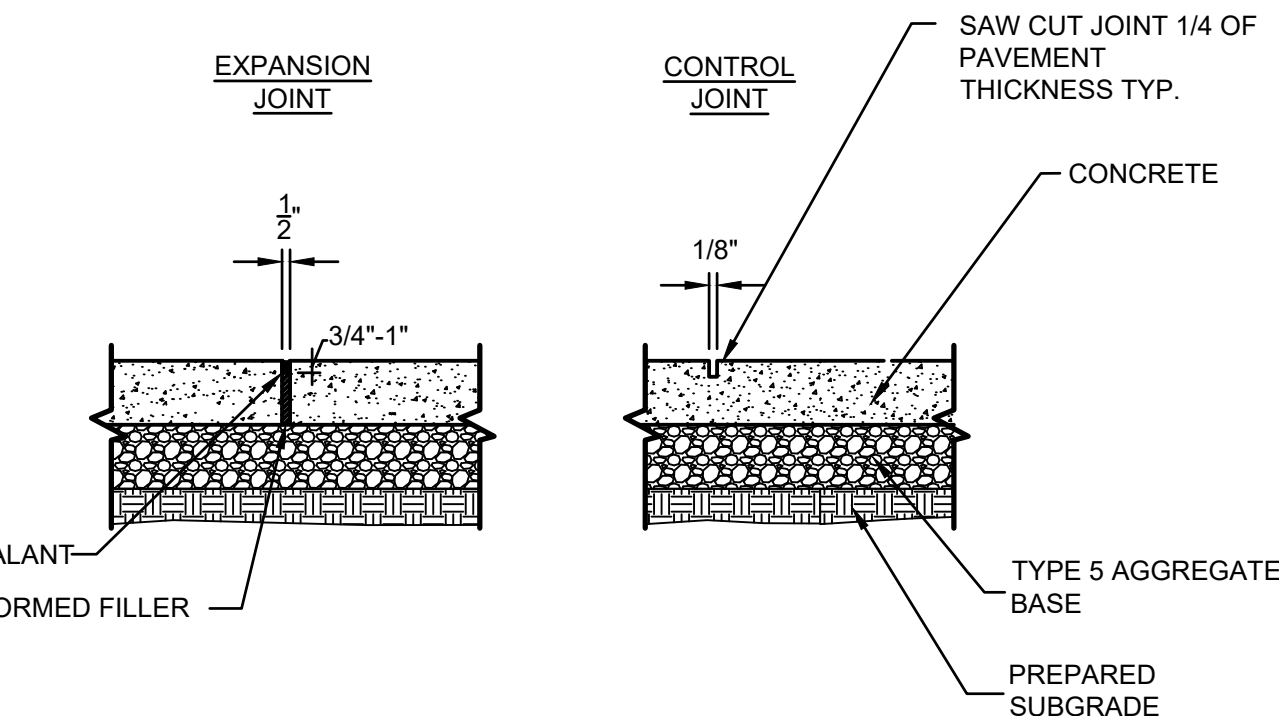


SECTION

CONCRETE SIDEWALK
N.T.S.

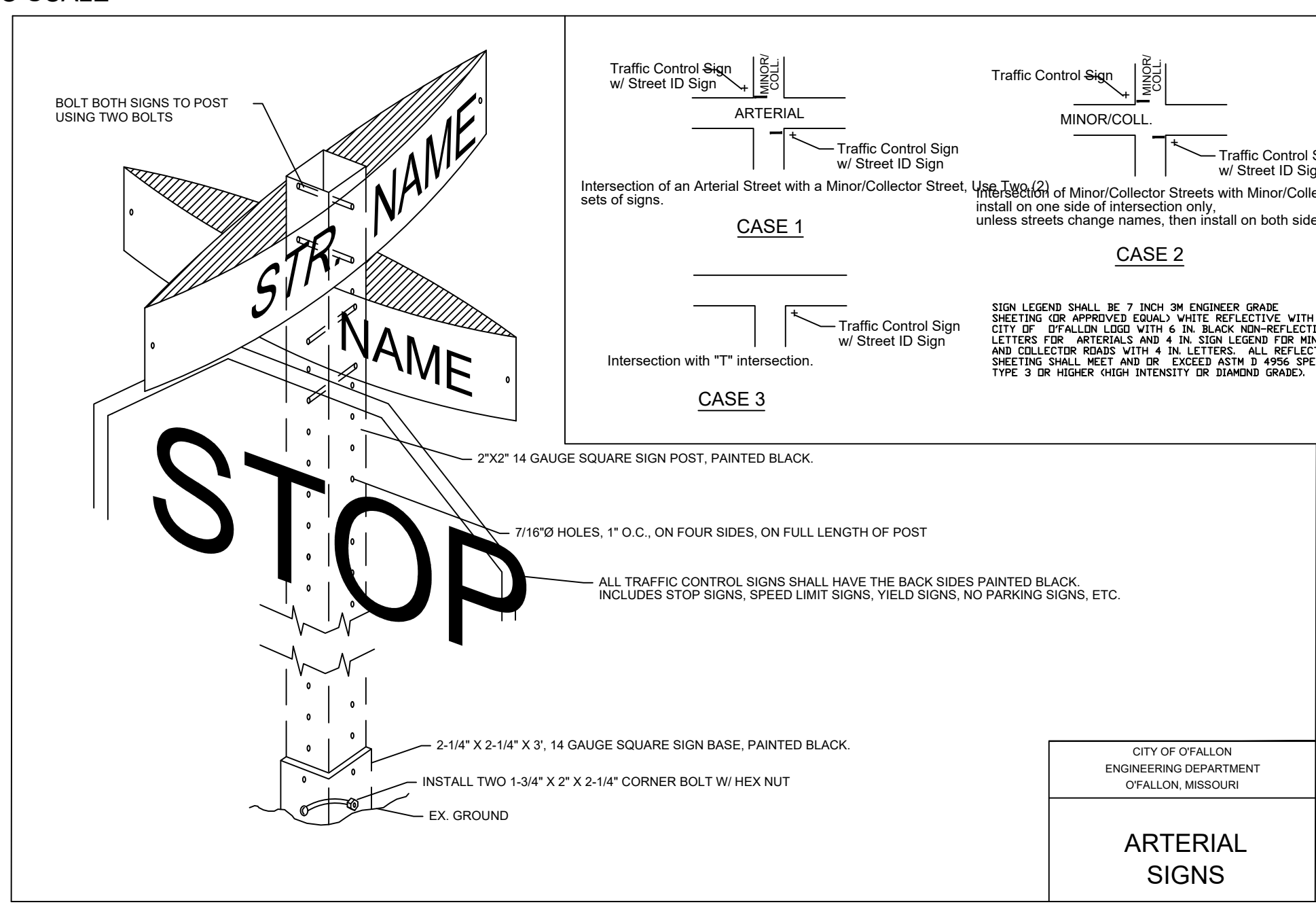


ACCESSIBLE PARKING SPACE MARKING
NO SCALE

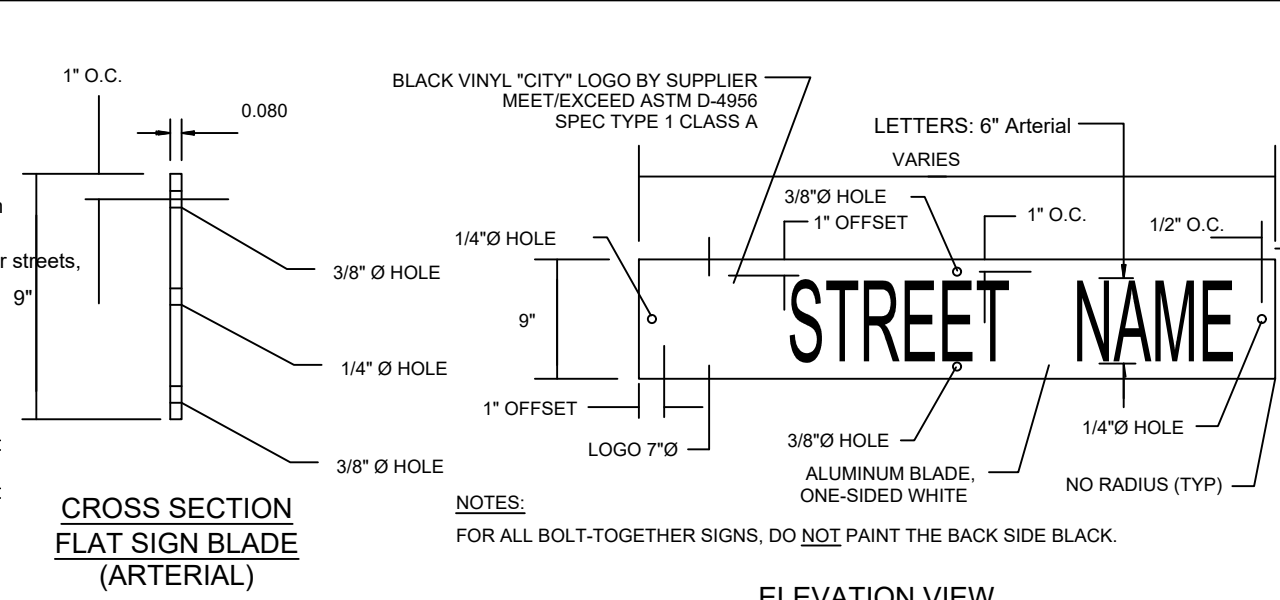


TYPICAL CONCRETE SIDEWALK JOINT DETAIL
N.T.S.

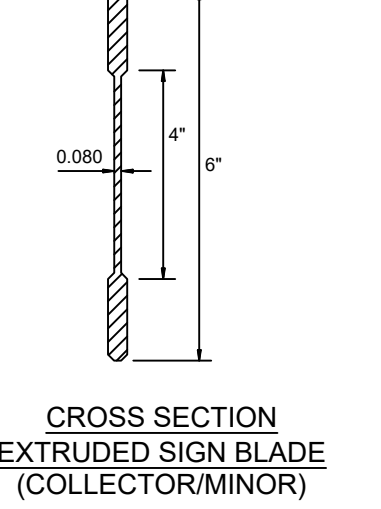
NOTES:
1. EXPANSION JOINTS SPACED AT 24' INTERVALS.
2. CONTROL JOINTS SPACING TO MATCH SIDEWALK WIDTH UNLESS NOTED OTHERWISE ON PLANS. THESE SHALL BE SAWED AND SEALED OR PREFORMED CRACKER JOINTS.
3. SELF LEVELING SEALANT IS NOT ACCEPTABLE. CONTRACTOR SHALL PROVIDE PRODUCT DATA AND COLOR INFORMATION TO OWNER FOR APPROVAL.



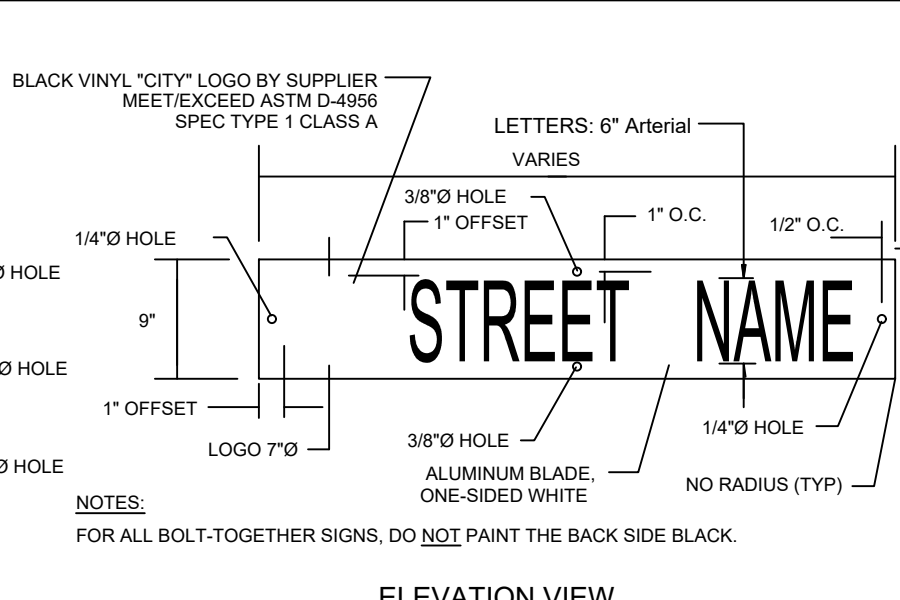
ARTERIAL SIGNS



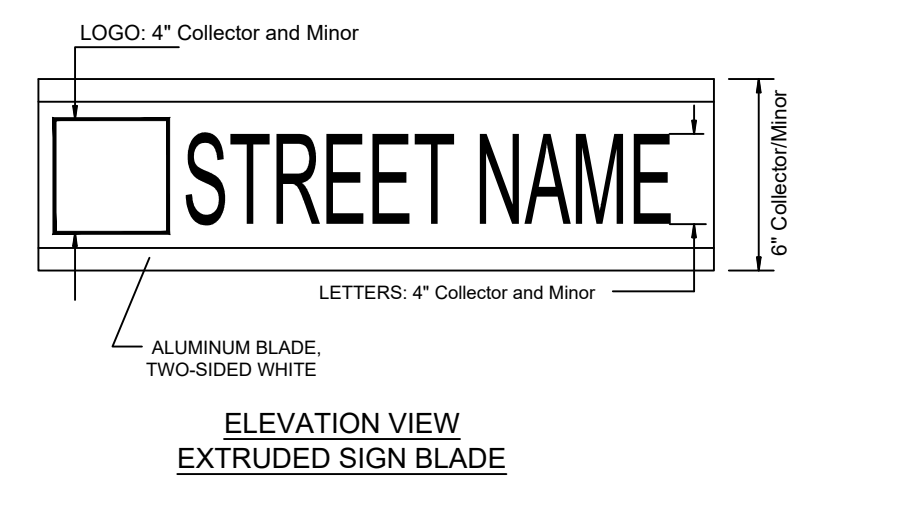
CROSS SECTION FLAT SIGN BLADE (ARTERIAL)



CROSS SECTION EXTRUDED SIGN BLADE (COLLECTOR/MINOR)



ELEVATION VIEW FLAT SIGN BLADE



ELEVATION VIEW EXTRUDED SIGN BLADE

GENERAL NOTES:
1. ALL SIGN POST AND BACK OF SIGNS THAT ARE TO BE PAINTED BLACK SHALL USE A PAINT SYSTEM THAT PROVIDES A MINIMUM 7 YEAR LIFE EXPECTANCY. MAY USE W/CHARACTER 'RUSTBOND' BASE AT 1/2 MILS THICK, 'CARBOLINE 893 SF' INDICATOR AT 1/8 MILS THICK, 'CARBOLINE 133 HF' TOP COAT OR APPROVED EQUAL. OR ELECTROSTATIC APPLIED BLACK POWDER COATED AND BASED ON PAINT SYSTEM AT 2.0 MILS THICKNESS OR APPROVED EQUAL.
2. ALL SIGN LOCATIONS AND SIGNS MUST BE APPROVED BY THE ENGINEERING DIVISION PRIOR TO INSTALLATION.
3. STREET NAME SIGNS SHALL BE 3 INCHES WIDE FLAT SOLT TOGETHER FOR ANY ARTERIAL INTERSECTIONS AND 8 INCHES WIDE EXTRUDED ALUMINUM PANELS FOR ALL MINOR AND COLLECTOR ROADS. TYPICAL LENGTHS FOR MINOR AND COLLECTOR SIGNS SHALL BE 24 INCH SIGN LENGTHS OR LONGER AS NEEDED TO ACCOMMODATE STREET NAME.
4. SIGN LEGEND SHALL BE 7 INCH 3M ENGINEER GRADE SHEETING OR APPROVED EQUAL WHITE REFLECTIVE WITH THE CITY OF FALLON LOGO WITH 4 IN BLACK NON-REFLECTIVE LETTERS FOR ARTERIALS AND 4 IN SIGN LEGEND FOR MINOR AND COLLECTOR ROADS WITH 4 IN LETTERS. ALL REFLECTIVE SHEETING SHALL MEET AND EXCEED ASTM D 4956 SPEC. TYPE 3 OR HIGHER (HIGH INTENSITY OR DIAMOND GRADE).
5. SIGN POSTS SHALL BE HEAVY 'F' CHANNEL (2 LB/FT) PAINTED BLACK. SIGN POSTS FOR COLLECTOR/MINOR SIGNS SHALL HAVE 2\"/>