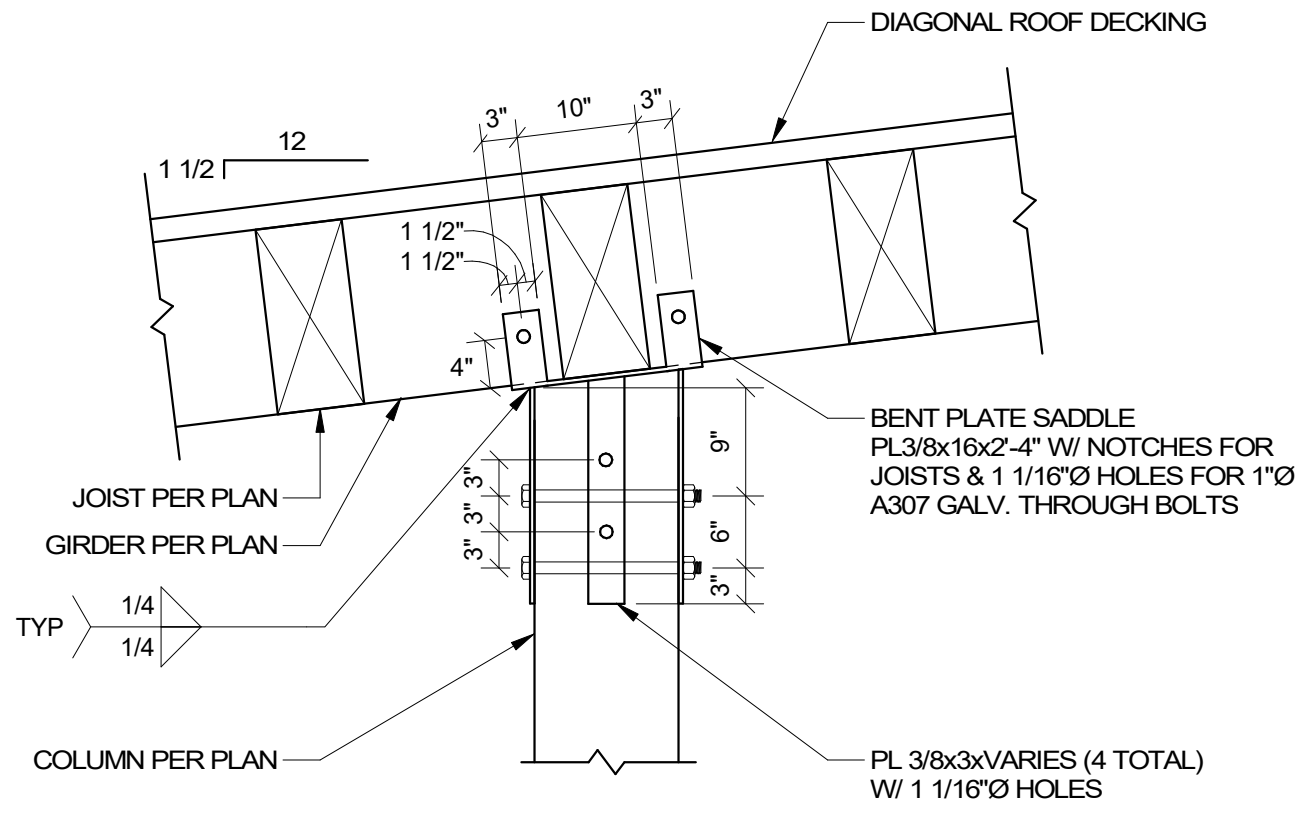
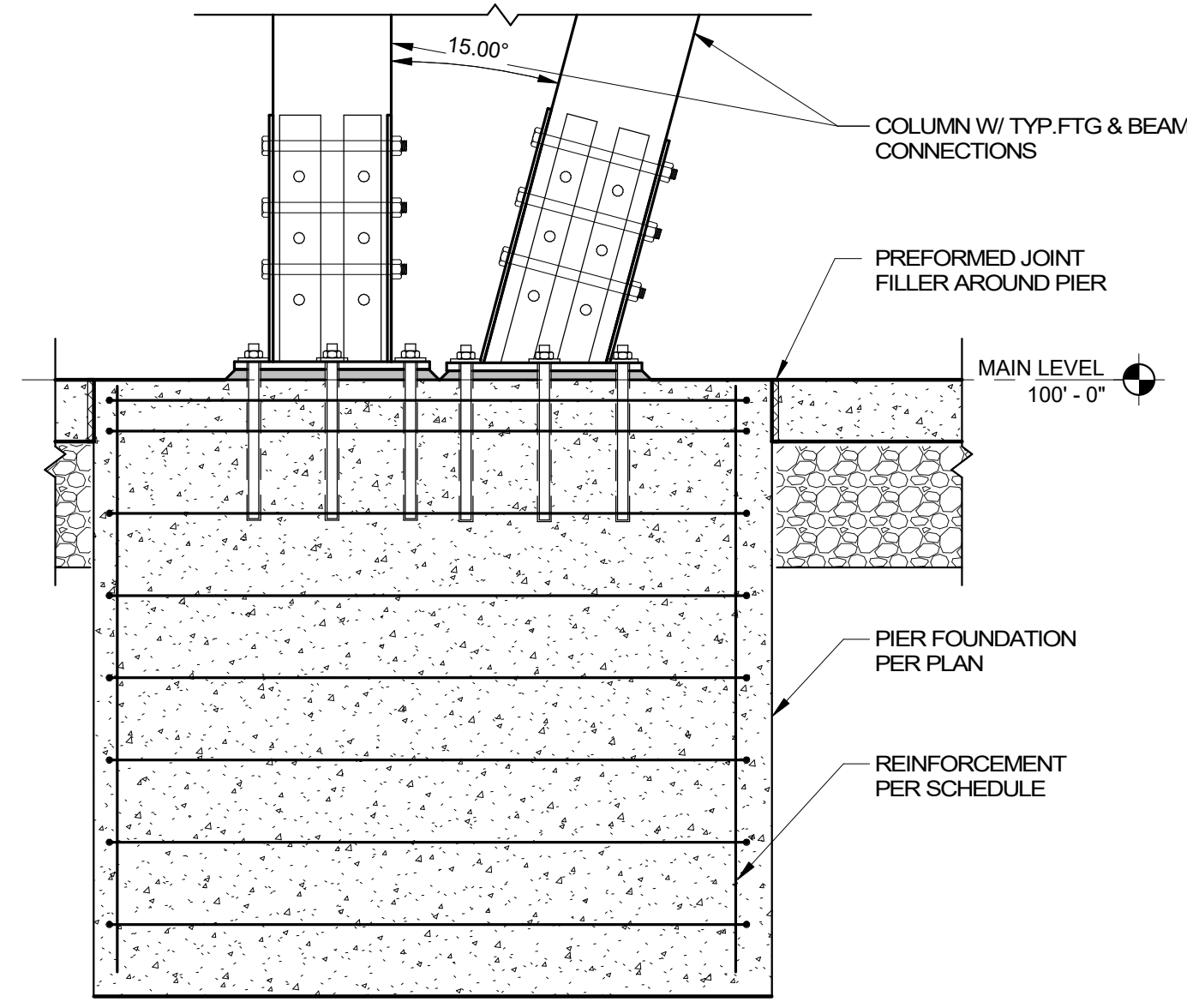


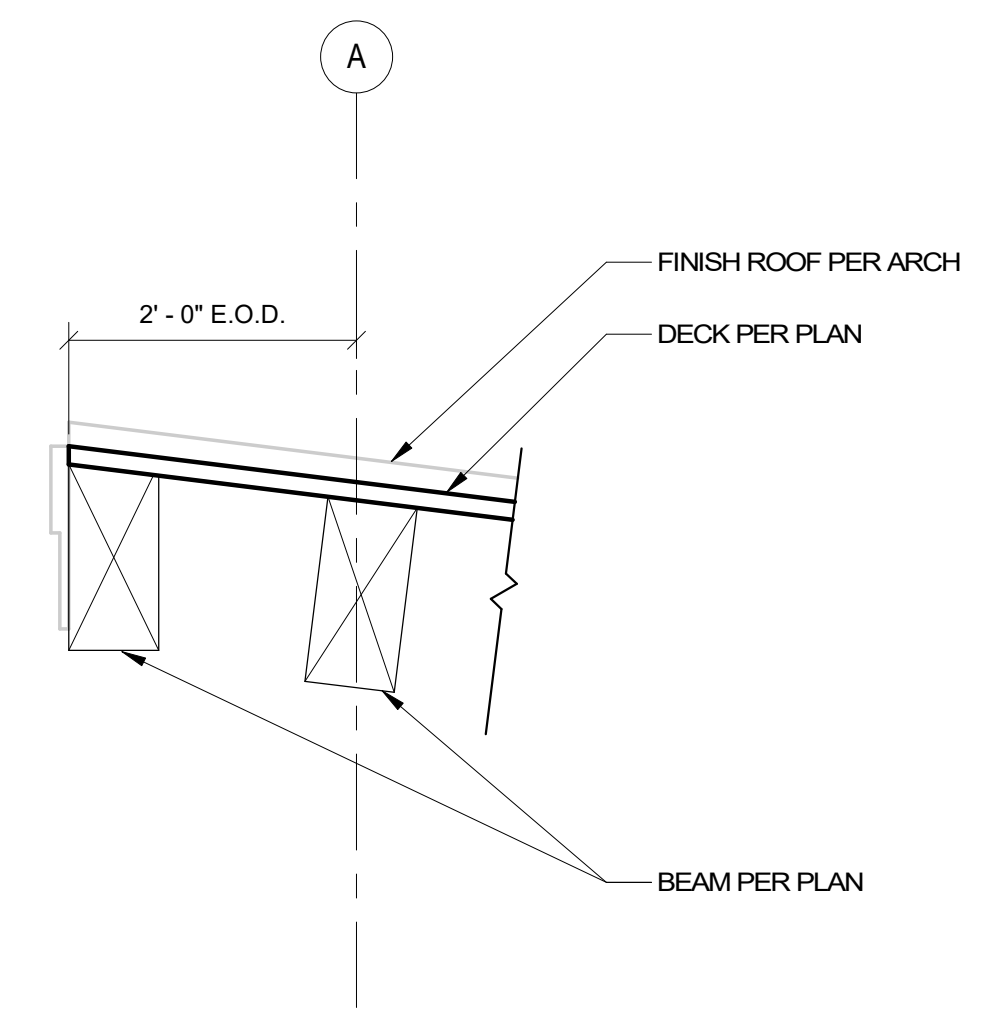
5 TYP. STRAP @ EACH JOIST
S-531 3/4" = 1'-0"



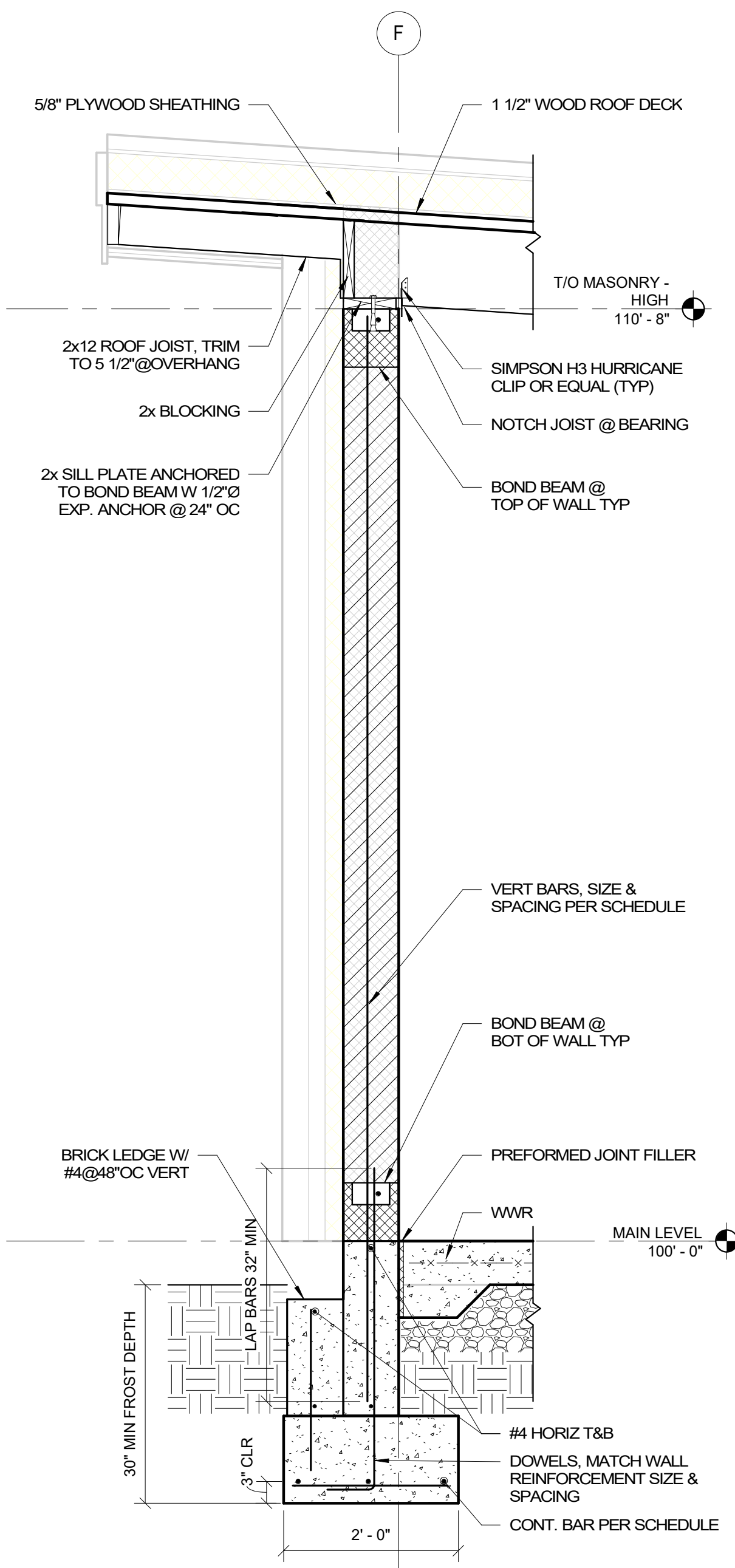
6 TYP. GIRDER-TO-COL CONNECTION DETAIL
S-531 3/4" = 1'-0"



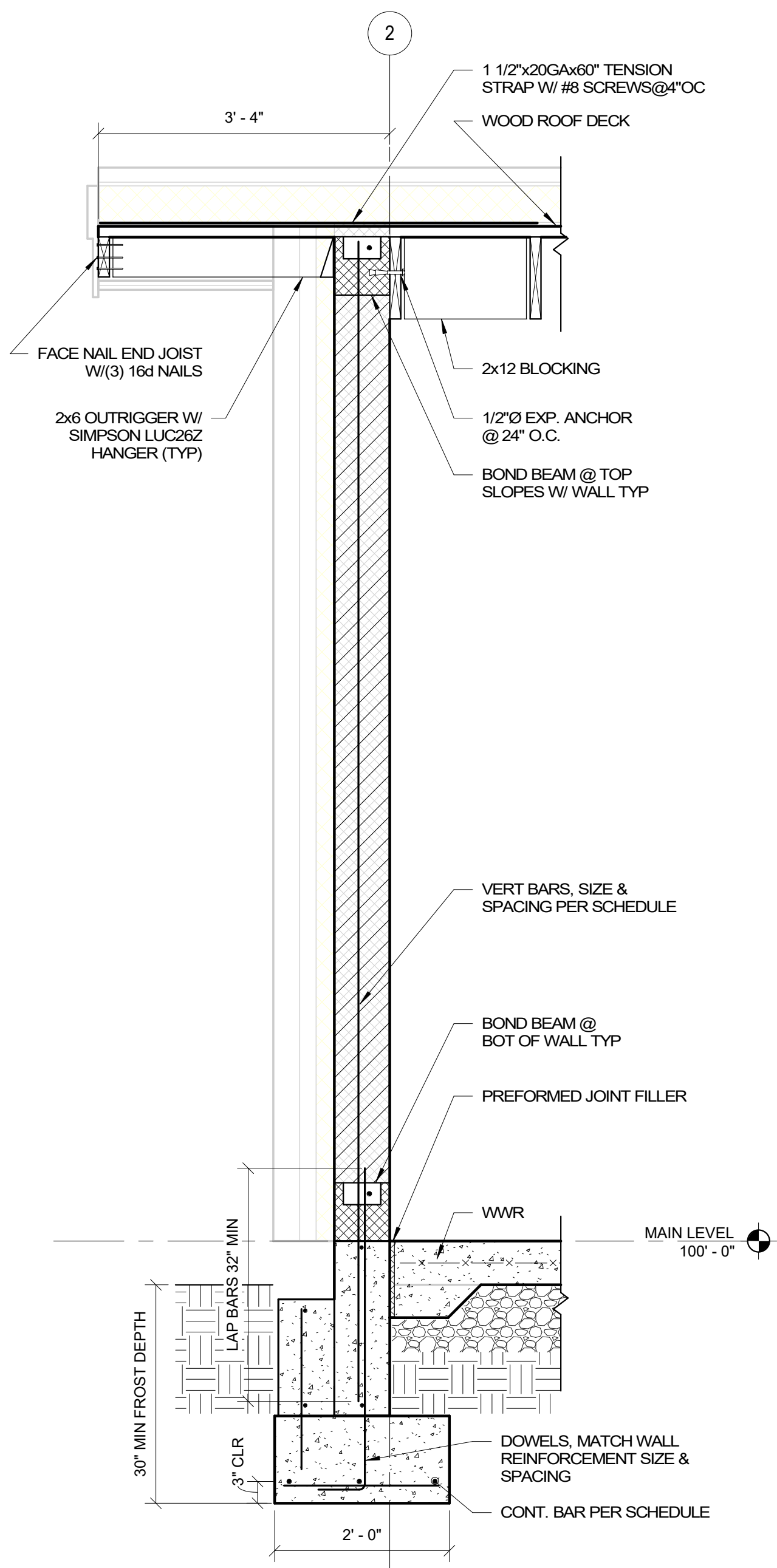
7 AMPHITHEATER SECTION
S-531 3/4" = 1'-0"



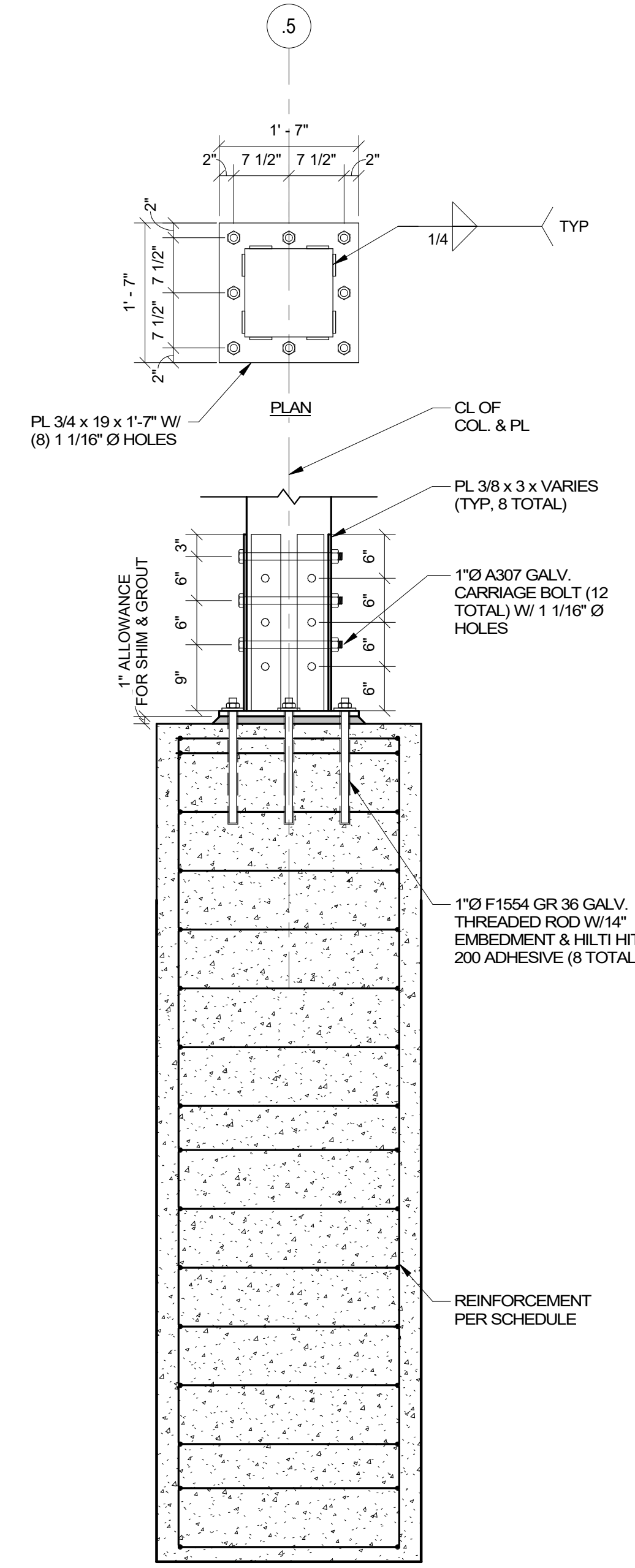
8 AMPHITHEATER FRONT OVERHANG
S-531 3/4" = 1'-0"



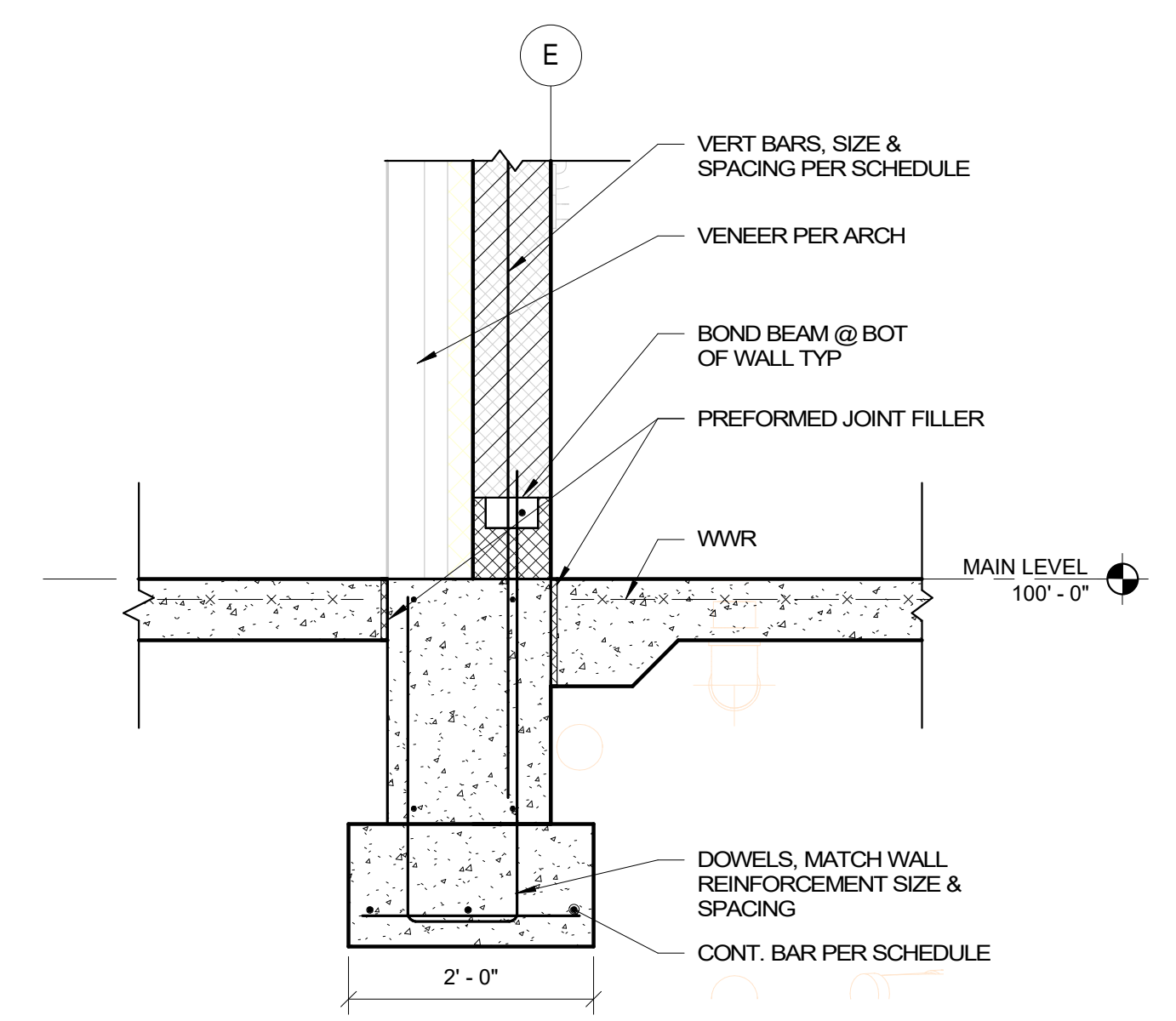
1 CS WALL SECTION
S-531 3/4" = 1'-0"



2 CS WALL SECTION
S-531 3/4" = 1'-0"



3 TYP. WOOD-COL FTG CONNECTION
S-531 3/4" = 1'-0"



4 AMPH TO CS TRANSITION
S-531 3/4" = 1'-0"



The Professional Engineer, whose signature and personal seal appear on this document, assumes responsibility only for what appears hereon, and disclaims responsibility for all other plans, specifications, estimates, reports, documents or instruments not noted by the Professional Engineer, or intended to be used for, any part or parts of the engineering project to which this document refers. Prints sealed by the Engineer have the enclosed or seal of the Engineer across the signature and date. Copies of this document, as signed and sealed, have been retained by the Professional Engineer. The Professional Engineer will not be responsible for subsequent changes to this document, unless the changes are made by the Engineer or with the Engineer's written authorization.

Issuances		
No.	Description	Date
02	PRELIM P&Z	04/28/17
03	P&Z RESUBMIT	05/17/17
04	100% DD SET	06/09/17
05	50% CD SET	07/14/17
06	90% CD SET	08/01/17
07	PERMIT SET	08/18/17
08	PERMIT SET	09/22/17
09	PERMIT SET REVISIONS	10/04/17

Revisions		
No.	Description	Date

H&S #: 1701400
Drawn: JAV Reviewed: CMS
Sheet Title: AMPHITHEATER DETAILS