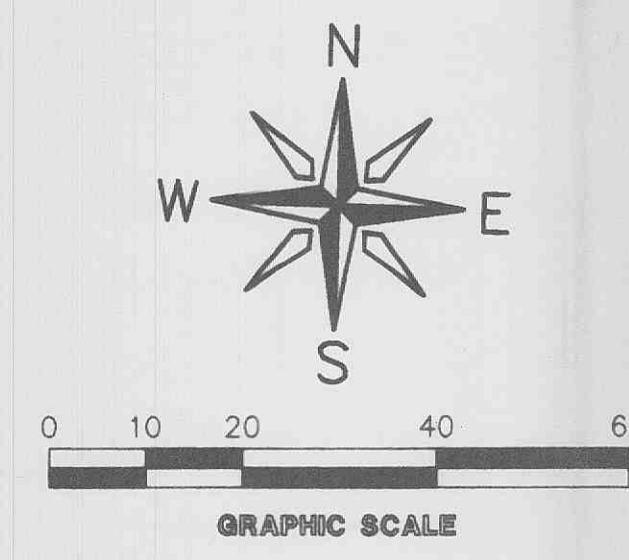
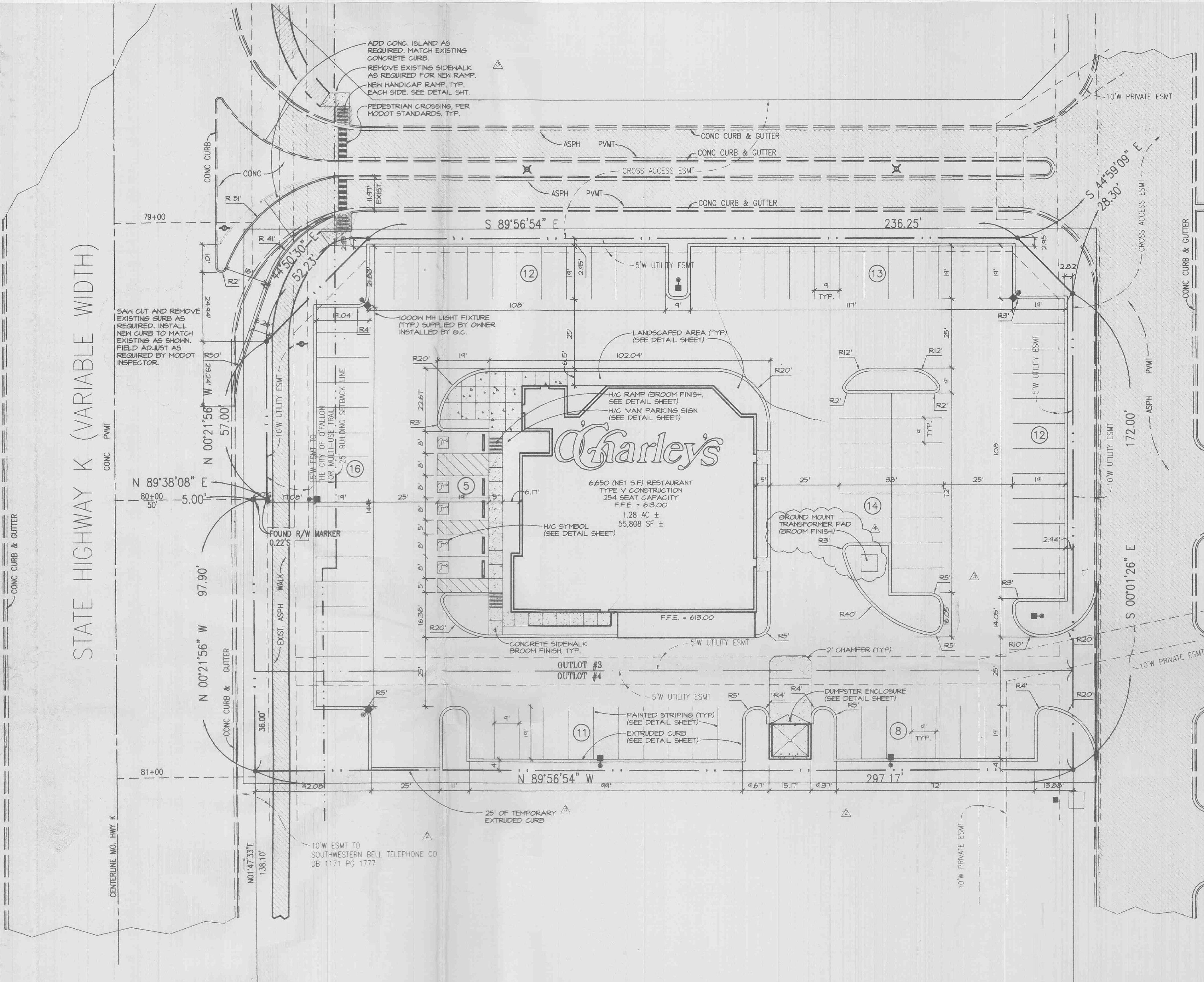
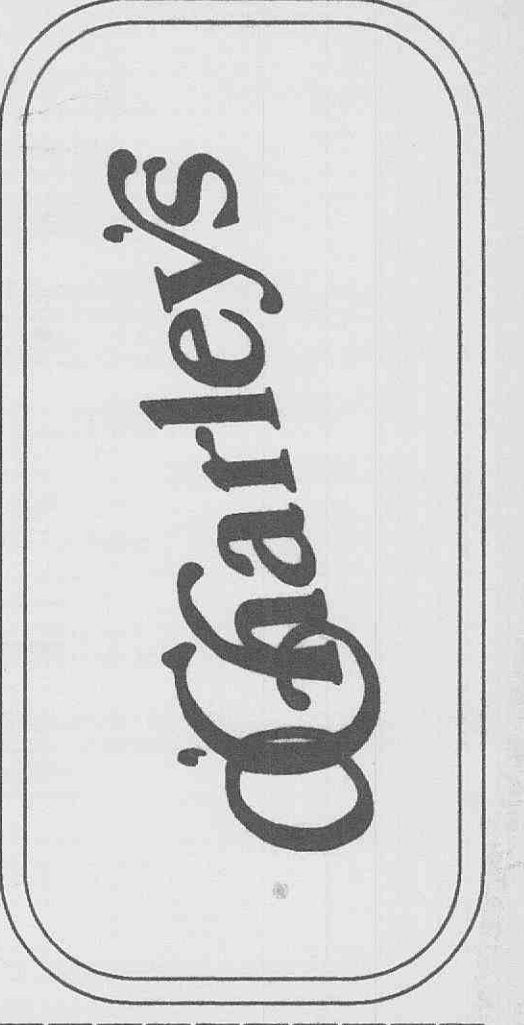
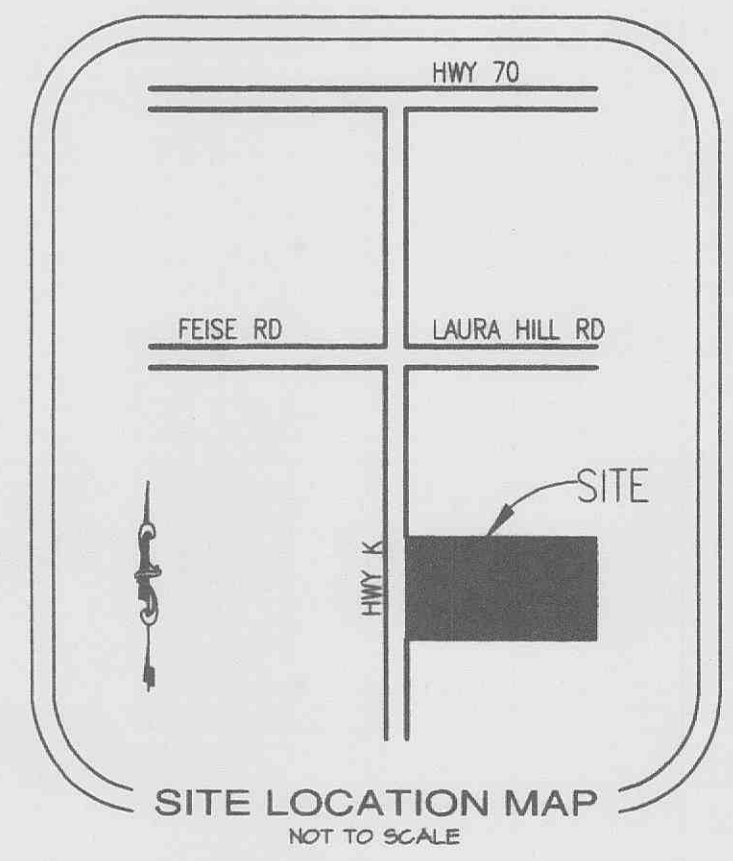


STATE HIGHWAY K (VARIABLE WIDTH)



EXISTING	PROPOSED
—	CONTOUR
—	SPOT EL.
—	STORM SEWER
—	SANITARY SEWER
○	MANHOLE
○	CLEAN OUT
—	WATER LINE
+	GATE VALVE
▽	FIRE HYDRANT
○ PP	POWER POLE
◇ LP	LIGHT POLE
○ TP	TEL. POLE
N/A	DIRECTION ARROW, S
N/A	PARKING COUNT (12)



OWNER: O'CHARLEY'S, INC.
3030 SIDCO DRIVE
NASHVILLE, TENNESSEE 37204
(615) 286-8800

ENGINEER: DESIGN AND ENGINEERING, P.C.
6600 OAKBROOK PARKWAY, SUITE 100
NOIRCROSS, GA 30043
(615) 570-1774

MPE: KURZYNSKE AND ASSOCIATES
24 MIDDLETON STREET
NASHVILLE, TENNESSEE 37210
(615) 285-5208

NOTES:

- BY GRAPHIC PLOTTING ONLY, THE PROPERTY SURVEYED IS WITHIN THE ZONE "X" (AREAS DETERMINED TO BE OUTSIDE 500-YEAR FLOODPLAIN), AS PER FIRM COMMUNITY PANEL NO. 2918300239 E, DATED AUGUST 2, 1996.
- SOURCE OF TITLE INFORMATION: NA
- SOURCE OF BEARING SYSTEM USED: THE SHOPS AT LAURA HILL, A SUBDIVISION RECORDED IN PLAT BOOK 36 PAGE 40 OF THE ST. CHARLES COUNTY RECORDS.
- PROPERTY SURVEYED CONTAINS 55,808 SQUARE FEET OR 1.28 ACRES, MORE OR LESS.

PROPERTY DESCRIPTION:

A TRACT OF LAND BEING ALL OF OUTLOT 3 AND THE NORTH 36.00 FEET OF OUTLOT 4 OF THE SHOPS AT LAURA HILL, A SUBDIVISION RECORDED IN PLAT BOOK 367 PAGE 40 OF THE ST. CHARLES COUNTY RECORDS AND BEING MORE PARTICULARLY DESCRIBED AS FOLLOWS:

BEGINNING AT A POINT SOUTH 00 DEGREES 01 SECONDS 26 SECONDS EAST 36.00 FEET FROM THE SOUTHEAST CORNER OF SAID LOT 3, THENCE PARALLEL WITH THE SOUTH LINE OF SAID LOT, NORTH 89 DEGREES 56 MINUTES 54 SECONDS WEST A DISTANCE OF 297.19 FEET TO A POINT ON THE EAST LINE OF MISSOURI STATE HIGHWAY K, THENCE ALONG SAID EAST LINE, NORTH 00 DEGREES 21 MINUTES 56 SECONDS WEST A DISTANCE OF 97.90 FEET, THENCE CONTINUING ALONG SAID EAST LINE, NORTH 89 DEGREES 38 MINUTES 08 SECONDS EAST A DISTANCE OF 5.00 FEET, THENCE CONTINUING ALONG SAID LINE, NORTH 00 DEGREES 21 MINUTES 56 SECONDS WEST A DISTANCE OF 57.00 FEET, THENCE NORTH 44 DEGREES 50 MINUTES 30 SECONDS EAST A DISTANCE OF 52.23 FEET, THENCE SOUTH 89 DEGREES 56 MINUTES 54 SECONDS EAST A DISTANCE OF 236.25 FEET, THENCE SOUTH 44 DEGREES 59 MINUTES 09 SECONDS EAST A DISTANCE OF 28.30 FEET, THENCE SOUTH 00 DEGREES 01 MINUTES 26 SECONDS EAST A DISTANCE OF 172.00 FEET TO THE POINT OF BEGINNING.

NOTES

A. OWNER: O'CHARLEY'S, INC.
3030 SIDCO DRIVE
NASHVILLE, TENNESSEE 37204
TELEPHONE: (615) 782-8431

B. EXISTING INFORMATION TAKEN FROM DRAWINGS BY:
WOLVERTON & ASSOCIATES INC.
5600 OAKBROOK PARKWAY, SUITE 100,
NOIRCROSS, GA 30043

C. TOTAL AREA OF SITE: 1.28 ACRES

D. PARKING SUMMARY:
87 PARKING SPACES FOR CARS
5 HANDICAP PARKING SPACES
-- RV/BUS PARKING SPACES
92 TOTAL PARKING SPACES

E. BUILDING: 6650(NET) SQUARE FEET / SEATING CAPACITY: 254 SEATS

F. THE CONTRACTOR SHALL BID AND PERFORM THE WORK IN ACCORDANCE WITH ALL LOCAL, STATE AND NATIONAL CODES AND THE REQUIREMENTS OF THE LOCAL UTILITY COMPANY.

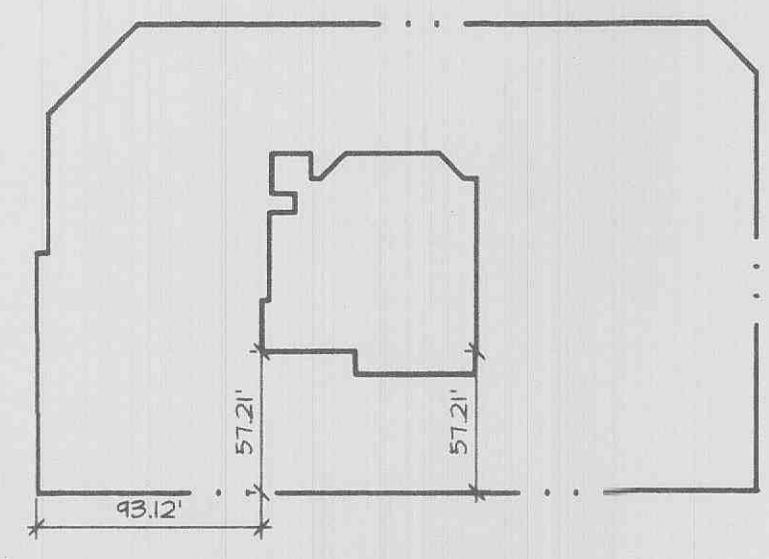
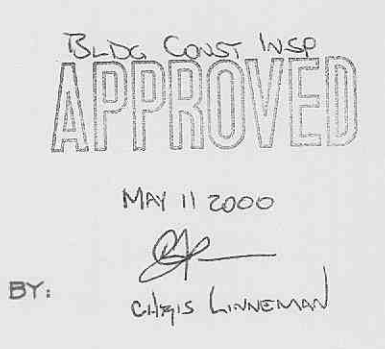
G. PERSONS USING THIS DRAWING SHOULD CONTACT LOCAL UTILITY COMPANIES FOR EXACT LOCATIONS OF UNDERGROUND UTILITIES.

H. ALL DIMENSIONS ARE TO FACE OF CURB, UNLESS OTHERWISE NOTED.

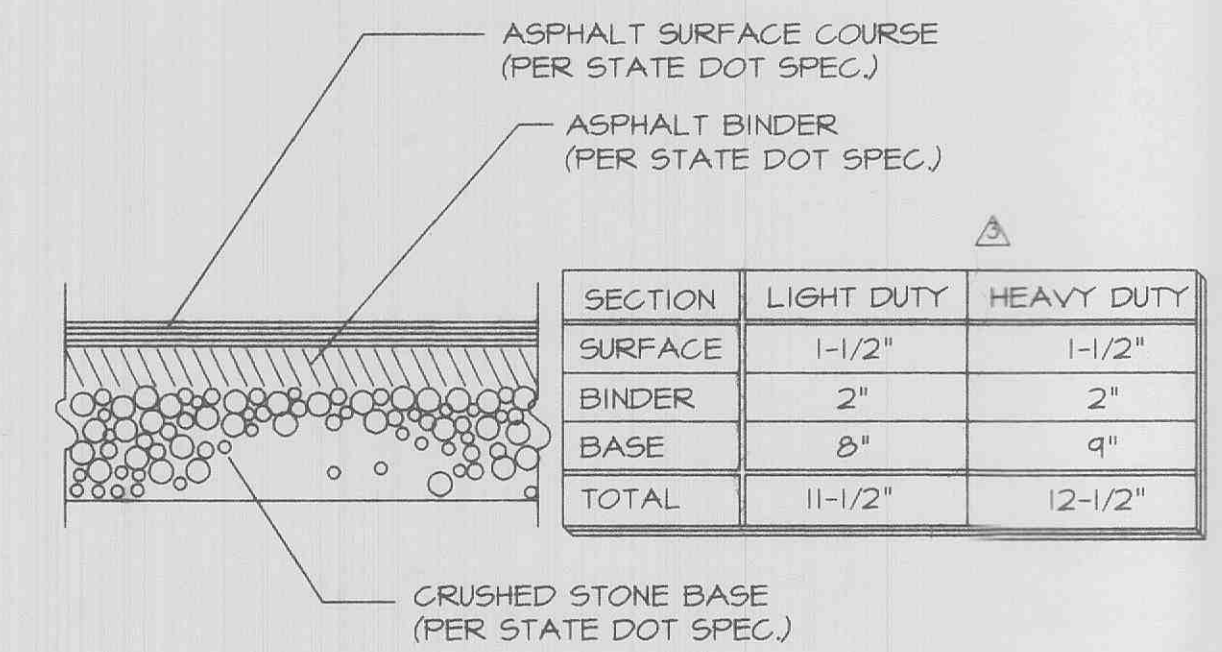
I. UNLESS NOTED OTHERWISE, CURB RADI: 3'0".

J. DO NOT SCALE THIS DRAWING AS IT IS A REPRODUCTION AND SUBJECT TO DISTORTION.

K. IN THE CASE OF CONFLICT BETWEEN THIS DRAWING AND ANY OTHER DRAWING AND/OR THE SPECIFICATIONS, THE ENGINEER SHALL BE IMMEDIATELY NOTIFIED FOR CLARIFICATION.



BUILDING STAKEOUT
NO SCALE



PAVING DETAIL
SCALE: NONE

A NEW O'CHARLEY'S RESTAURANT
LOCATION
2204 STATE HIGHWAY K
CITY OF FALLOON, MISSOURI
SITE PLAN

DATE ISSUED
JANUARY 24, 2000

REVISIONS

- 2-4-00 - SEAT CT. & SPOTS
- 2-24-00 - CITY COMMENTS
- 4-20-00 - CITY ENG. & MODOT
- 5-10-00 - CITY ENG. & LIGHTING

