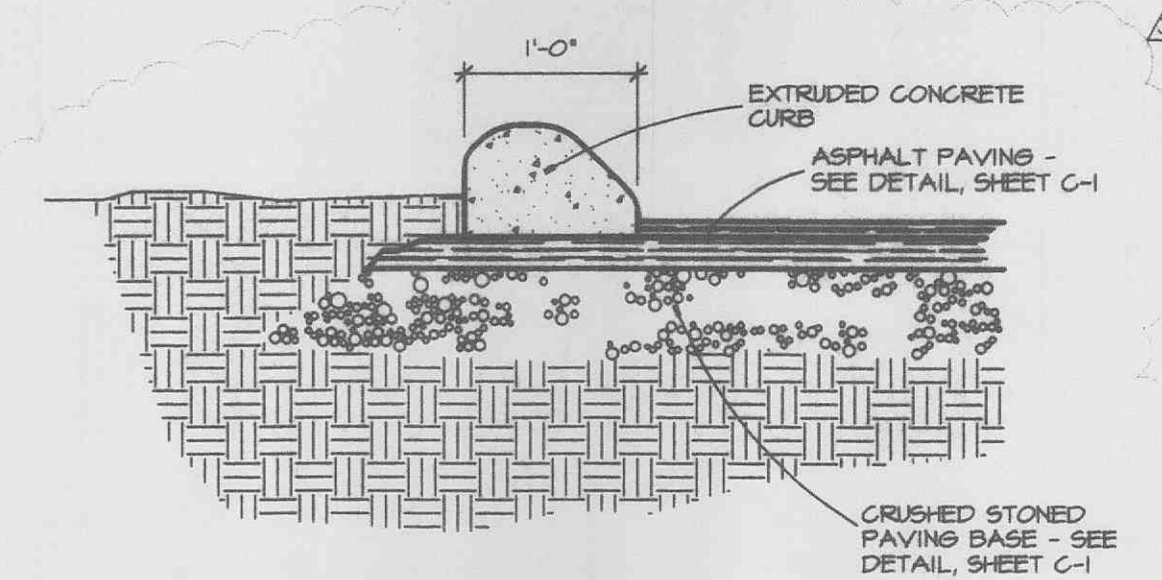
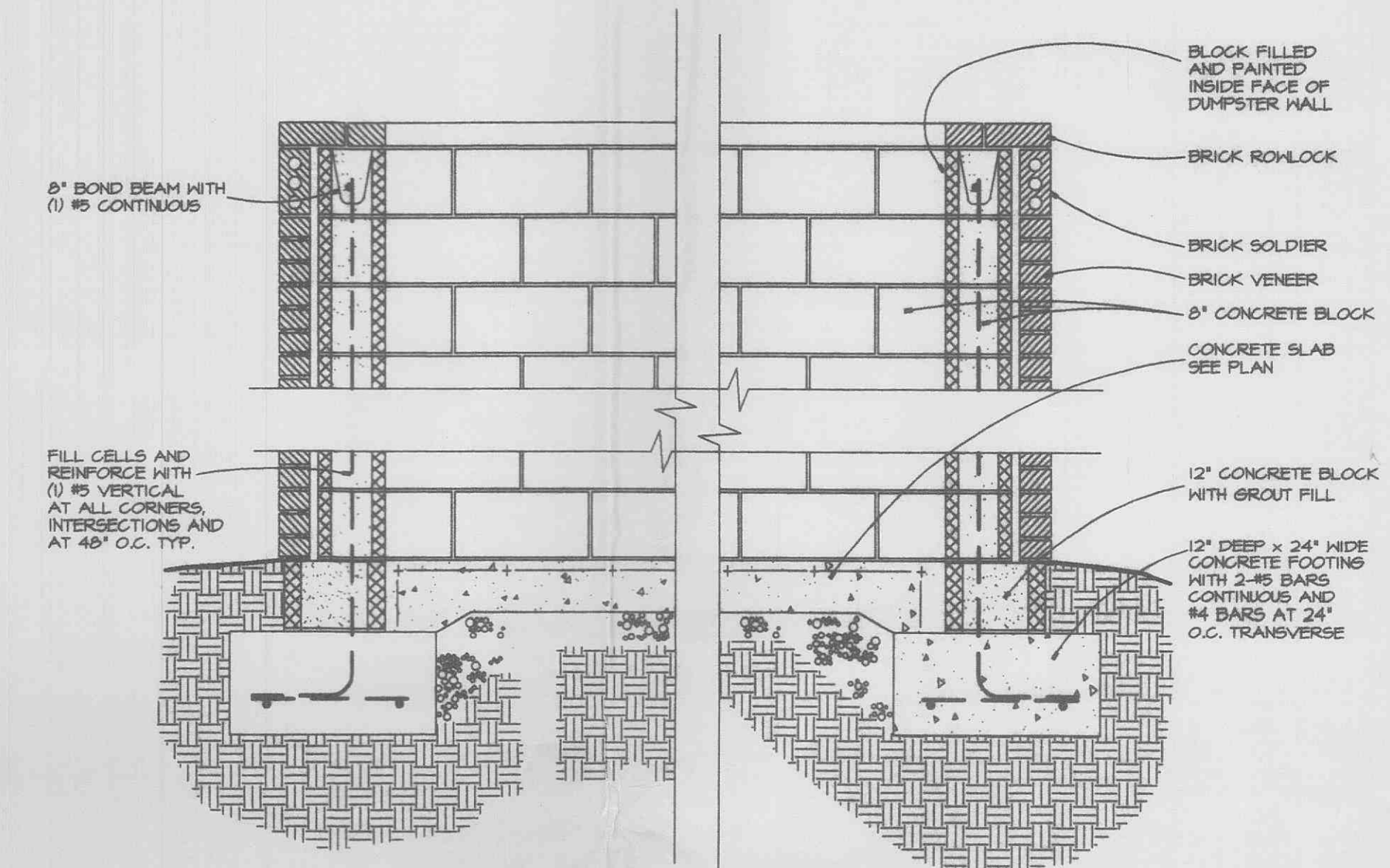


**4 GATE ELEVATION**  
SCALE: NONE

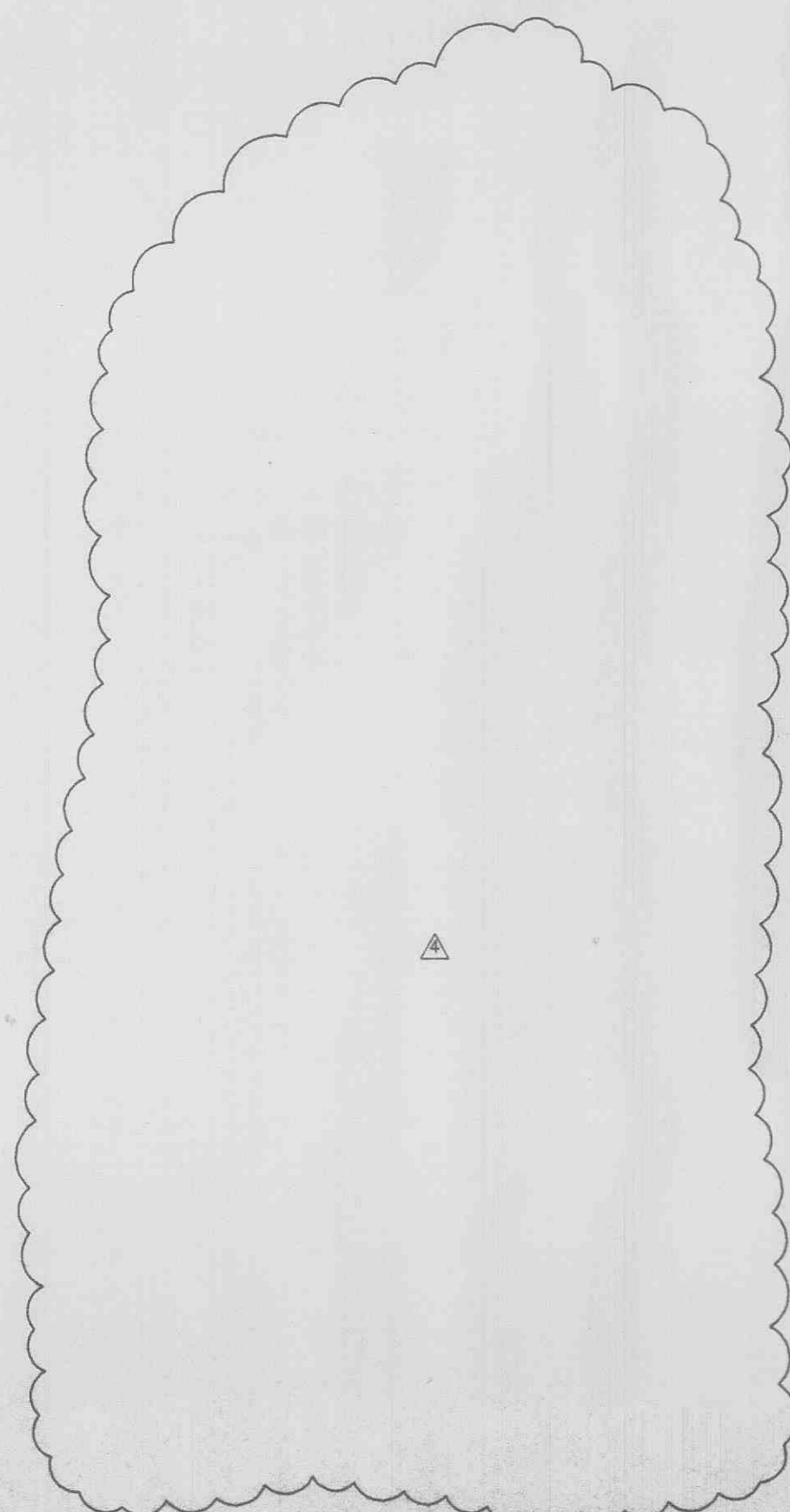


NOTE: 4000 PSI CONC. @ 28 DAYS- PROVIDE 1/2\"/>

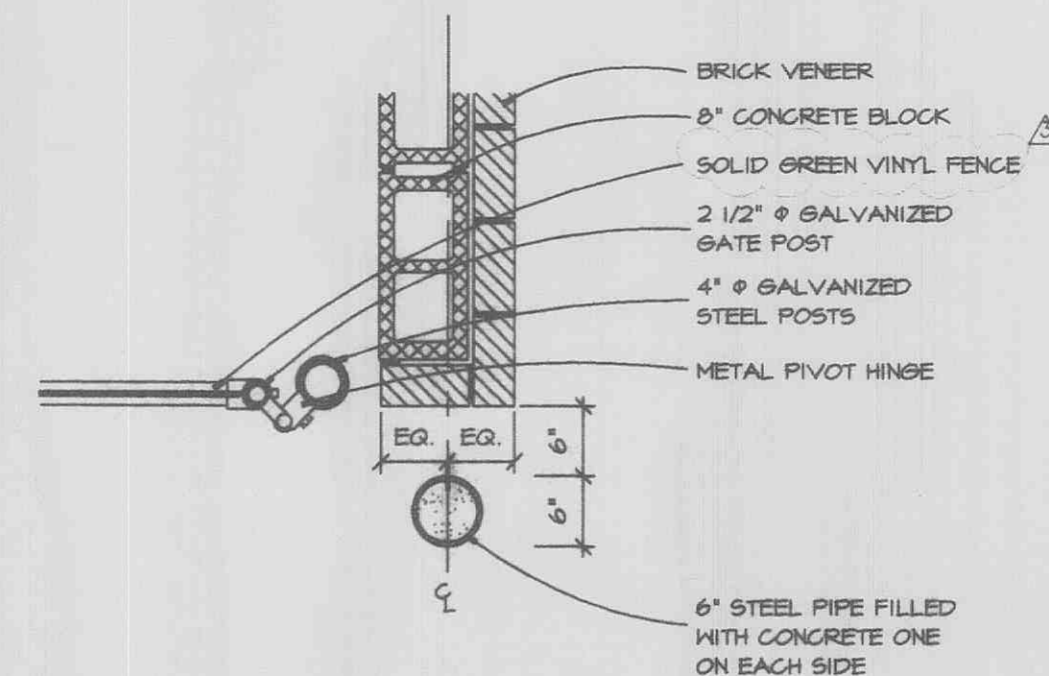
**EXTRUDED CURB DETAIL**  
SCALE: NONE



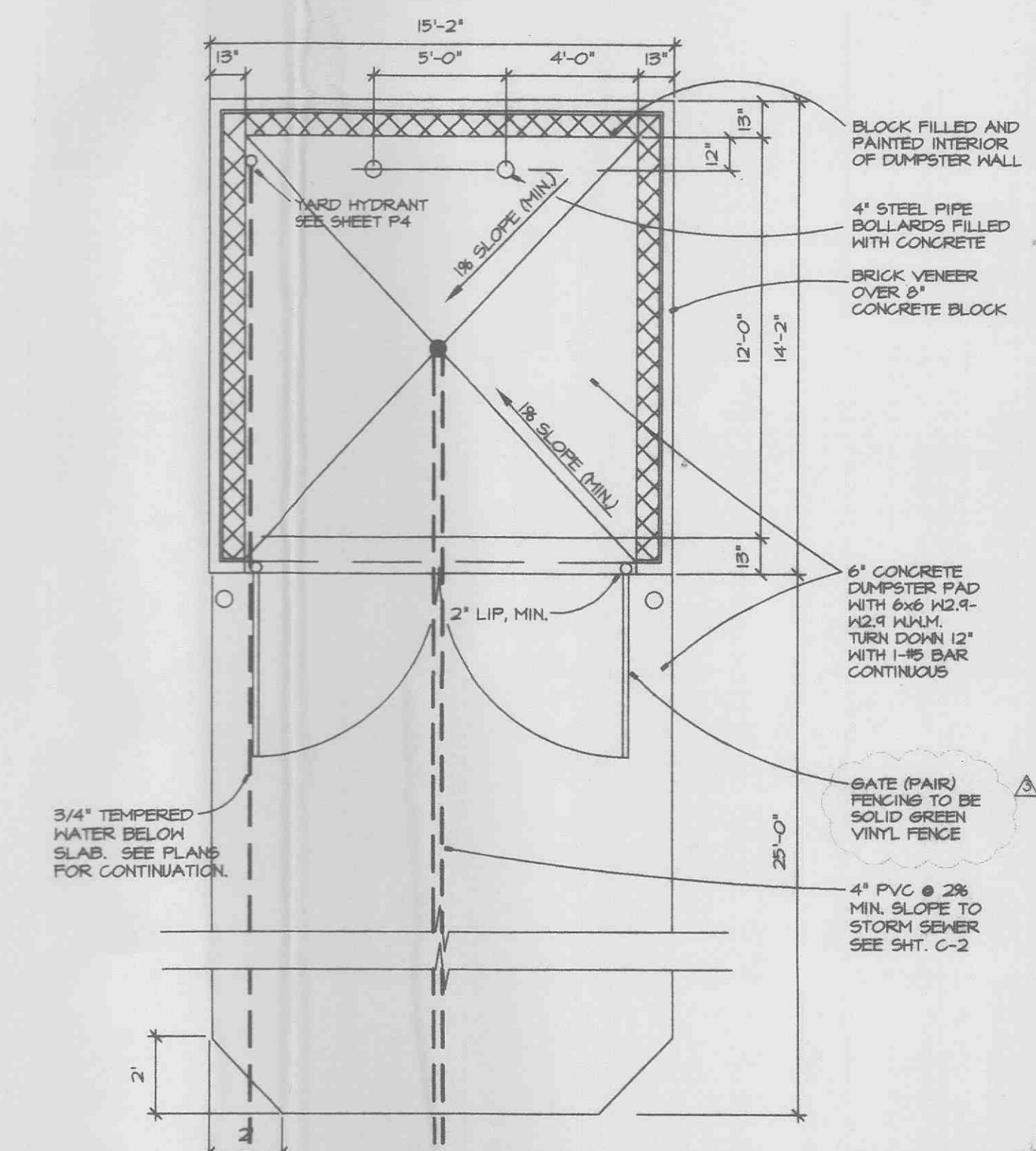
**SECTION**  
SCALE: NONE



**SIDE ELEVATION**  
SCALE: NONE



**2 CORNER DETAIL**  
SCALE: NONE



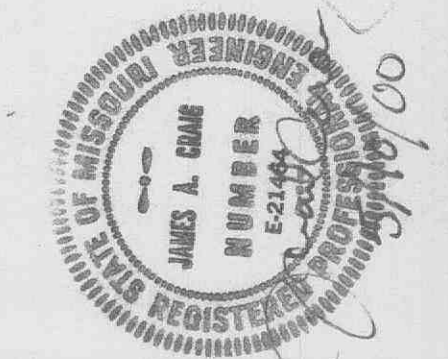
**DUMPSTER ENCLOSURE PLAN DETAIL**  
SCALE: NONE

**O'Charley's**

OWNER: O'CHARLEY'S, INC.  
8088 SIDCO DRIVE  
NASHVILLE, TENNESSEE 37204  
(615) 256-8500

ENGINEER: DESIGN AND ENGINEERING, P.C.  
5108 MARSH AND WAY, SUITE 200  
NASHVILLE, TENNESSEE 31021-1500  
(615) 370-1114

MPE: KURZYNSKE and ASSOCIATES  
NASHVILLE, TENNESSEE 37210  
(615) 255-5208



A NEW O'CHARLEY'S RESTAURANT  
LOCATION  
**2204 STATE HIGHWAY K  
O'FALLON, MISSOURI**  
**DETAIL SHEET**

DATE ISSUED  
**JANUARY 24, 2000**  
REVISIONS  
 A-2-24-00 - CITY COMMENTS  
 B-20-00 - CITY ENG. & MODOT  
 C-10-00 - CITY ENG. & LIGHTING

**C-4**