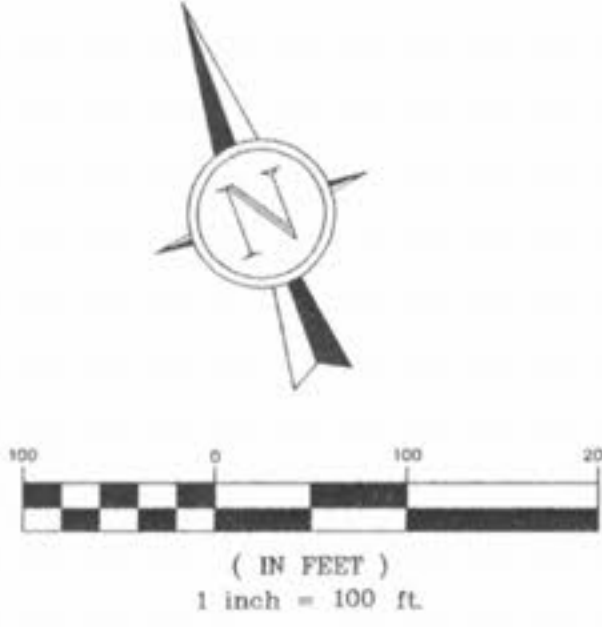


SYMBOL	QUANTITY	BOTANICAL NAME	COMMON NAME	SIZE	REMARKS
A	20	PINUS STROBUS	WHITE PINE	6"	B&B
B	88	ACER RUBRUM	RED MAPLE	2"	B&B
F	8	MALUS "ROBINSON"	ROBINSON FLOWERING CRAB	1.5"	B&B
	450	SHRUBS	VIBURNUM, JUNIPER, SPIREA	18"	
	1900 SF	PERENNIALS, ANNUALS	TO BE SELECTED		

LAWN AREAS TO BE SEEDED
MODOT ROW TO BE SODDED



APPROVED LANDSCAPE REQUIREMENTS

- A. DRIVES @ 1 TREE PER 40 LINEAL FEET
1. TECHNOLOGY DRIVE (NORTH OUTER ROAD) 1,591.33 LF
1,591.33 / 40 = 39.7 OR 40 TREES
 2. PERSIMMON POINTE BLVD 1,390 LF
1,390 / 40 = 34.7 OR 35 TREES
 3. MAIN CIRCULATION DRIVE 1,030 LF
1,030 / 40 = 25.7 OR 26 TREES
 4. INTERNAL SERVICE DRIVE 2,710 LF
2,710 / 40 = 67.75 OR 68 TREES

B. LANDSCAPE OPEN SPACE @ 1 TREE PER 3,000 SF
313,196.4 / 3,000 = 104.39 OR 104 TREES

C. REPLACEMENT OF EXISTING TREES @ 15 PER ACRE
0.82 AC REQUIRED MITIGATION X 15 = 12.3 OR 12 TREES

TOTAL TREES REQUIRED = 285
TOTAL TREES PROVIDED = 470

APPROVED TREE PRESERVATION

EXISTING TREE COVERAGE = 7.07 AC
RECOMMENDED PRESERVATION @ 20% = 1.41 AC
ACTUAL PRESERVATION OF 8.3 % = 0.59 AC
MITIGATION AREA = 0.82 AC.

REQUIRED REPLACEMENT AT 15 PER ACRE
15 X 0.82 = 12 TREES @ 2" CAL.

AMENDED LANDSCAPE REQUIREMENTS

- A. DRIVES @ 1 TREE PER 40 LINEAL FEET
1. TECHNOLOGY DRIVE (NORTH OUTER ROAD) 1,591.33 LF
1,591.33 / 40 = 39.7 OR 40 TREES
 2. PERSIMMON POINTE BLVD 1,390 LF
1,390 / 40 = 34.7 OR 35 TREES
 3. MAIN CIRCULATION DRIVE 1,030 LF
1,030 / 40 = 25.7 OR 26 TREES
 4. INTERNAL SERVICE DRIVE 2,710 LF
2,710 / 40 = 67.75 OR 68 TREES

B. LANDSCAPE OPEN SPACE @ 1 TREE PER 3,000 SF
313,196.4 / 3,000 = 104.39 OR 104 TREES

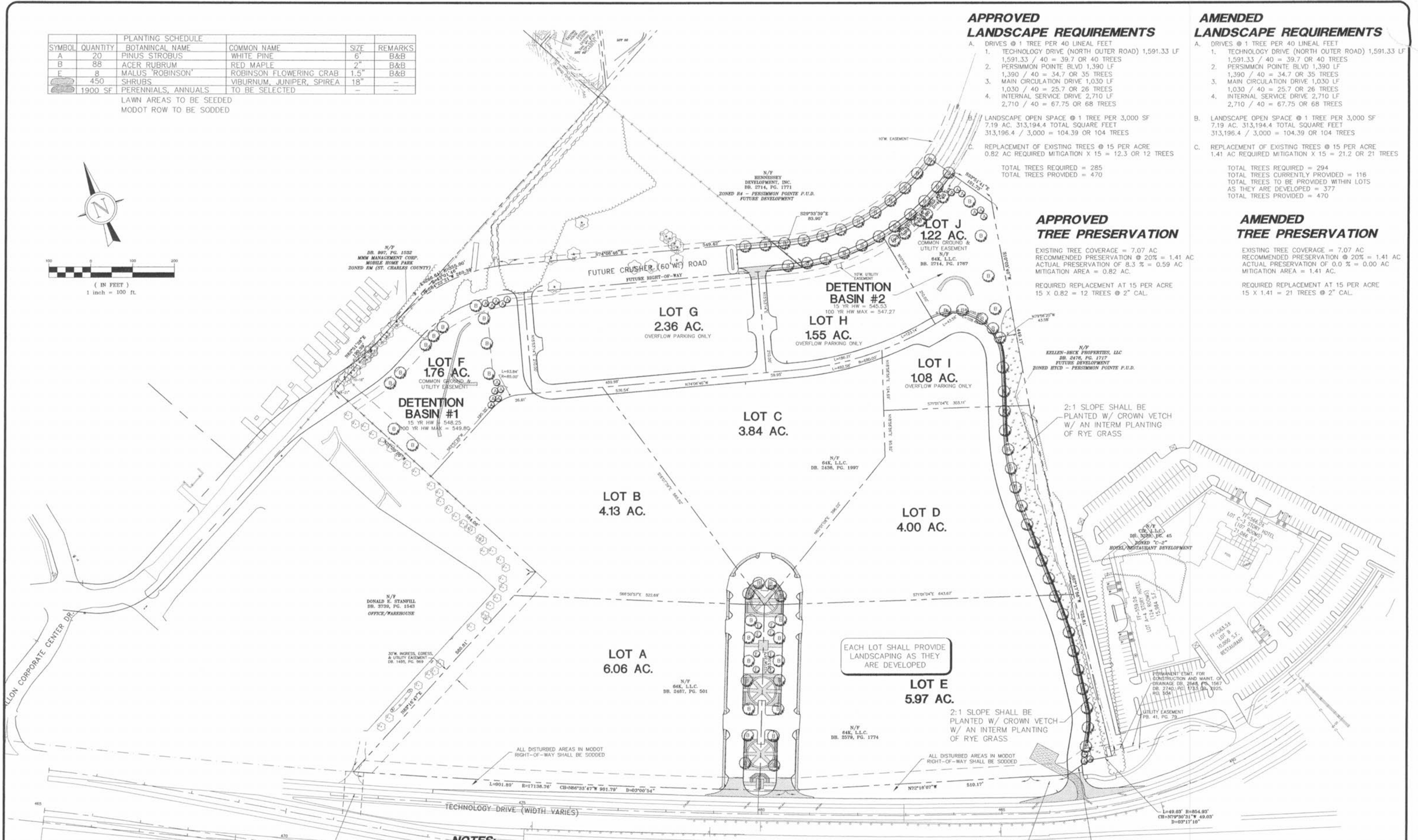
C. REPLACEMENT OF EXISTING TREES @ 15 PER ACRE
1.41 AC REQUIRED MITIGATION X 15 = 21.2 OR 21 TREES

TOTAL TREES REQUIRED = 294
TOTAL TREES CURRENTLY PROVIDED = 116
TOTAL TREES TO BE PROVIDED WITHIN LOTS AS THEY ARE DEVELOPED = 377
TOTAL TREES PROVIDED = 470

AMENDED TREE PRESERVATION

EXISTING TREE COVERAGE = 7.07 AC
RECOMMENDED PRESERVATION @ 20% = 1.41 AC
ACTUAL PRESERVATION OF 0.0 % = 0.00 AC
MITIGATION AREA = 1.41 AC.

REQUIRED REPLACEMENT AT 15 PER ACRE
15 X 1.41 = 21 TREES @ 2" CAL.



NOTES:

- 1) SEE SHEETS C4-5 FOR THE SITE PLAN
- 2) SEE SHEETS C6-7 FOR GRADING PLANS
- 3) SEE SHEETS C8-9 FOR GEOMETRICS PLANS
- 4) SEE SHEETS C10-11 FOR SANITARY PLAN AND PROFILES
- 5) SEE SHEETS C12-14 FOR STORM SEWER PROFILES
- 6) SEE SHEETS C15-16 FOR WATER PLAN AND PROFILES

PREPARED FOR:
BRINKMANN CONSTRUCTORS
CONTACT: KEVIN JACOBSMEYER
16650 CHESTERFIELD GROVE RD, SUITE 100
CHESTERFIELD, MO 63005
PH: (636) 537-9700
FAX: (636) 537-9880



P&Z FILE # 3101.05.03

O'FALLON AUTO MALL			
LANDSCAPE PLAN			
J. R. GRIMES		12300 OLD TESSON ROAD SUITE 3000 ST. LOUIS, MO. 63128 PH. (314) 849-6100 FAX (314) 849-6010	
CONSULTING ENGINEERS, INC.			
DRAWN BY: JLW	DATE: 04/08/05	CHECKED BY: LJM	DATE: 04/08/05
		JOB NUMBER: 675N	SHEET: C3.1