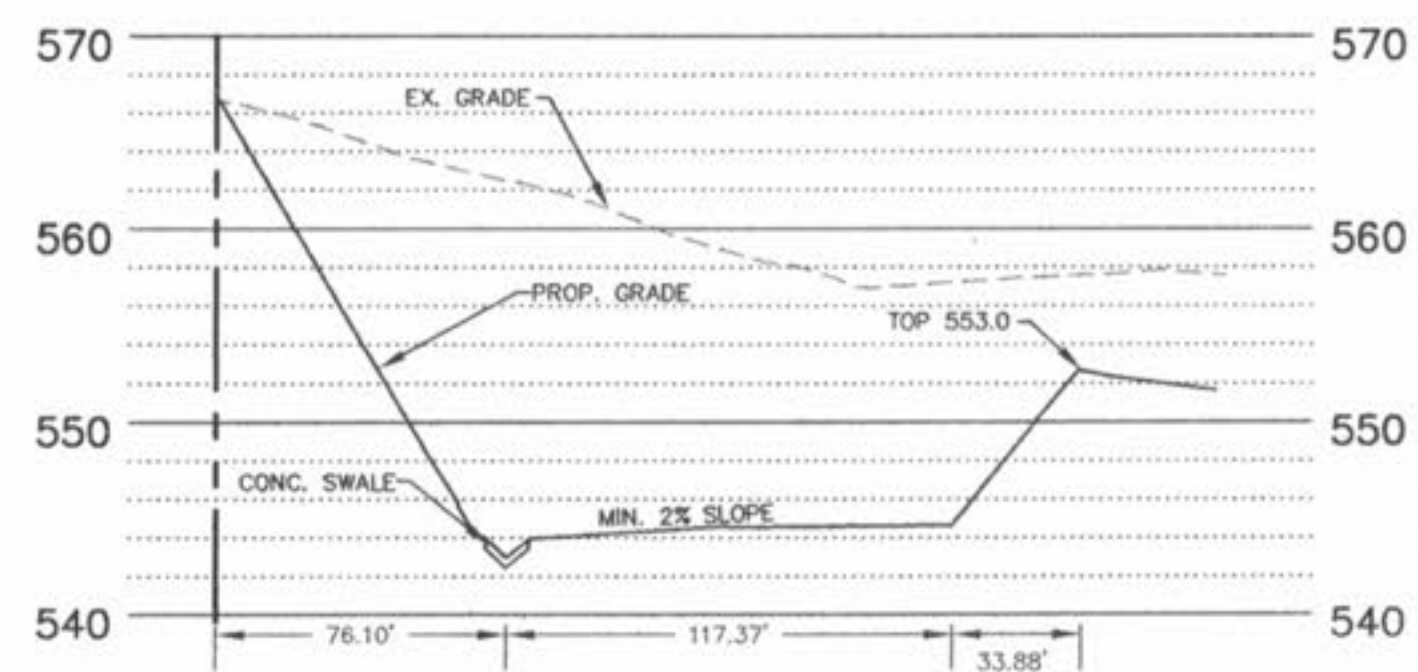
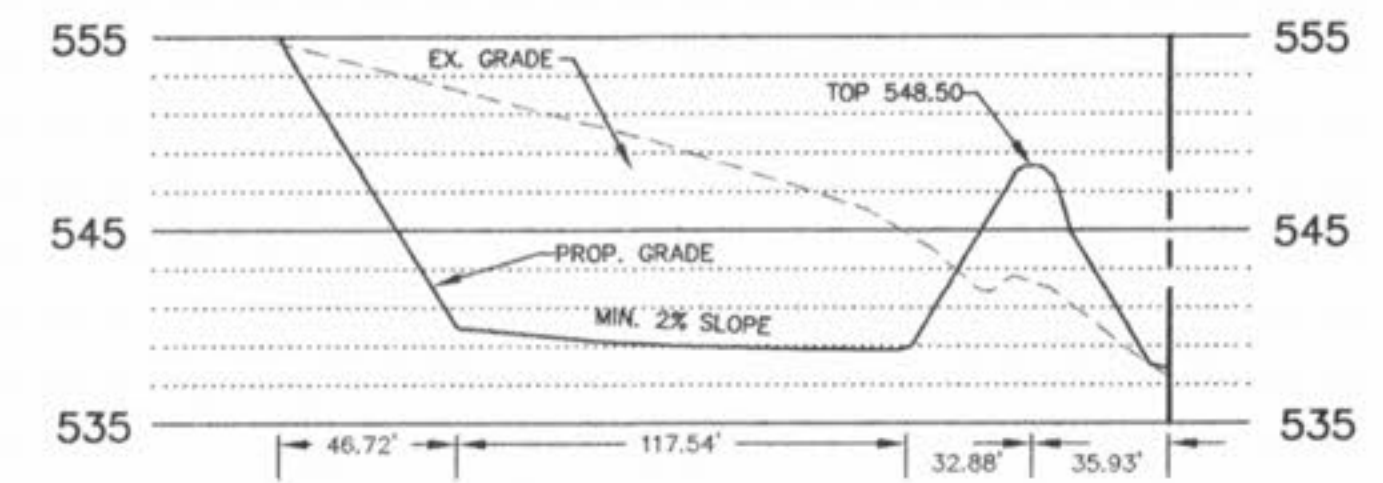


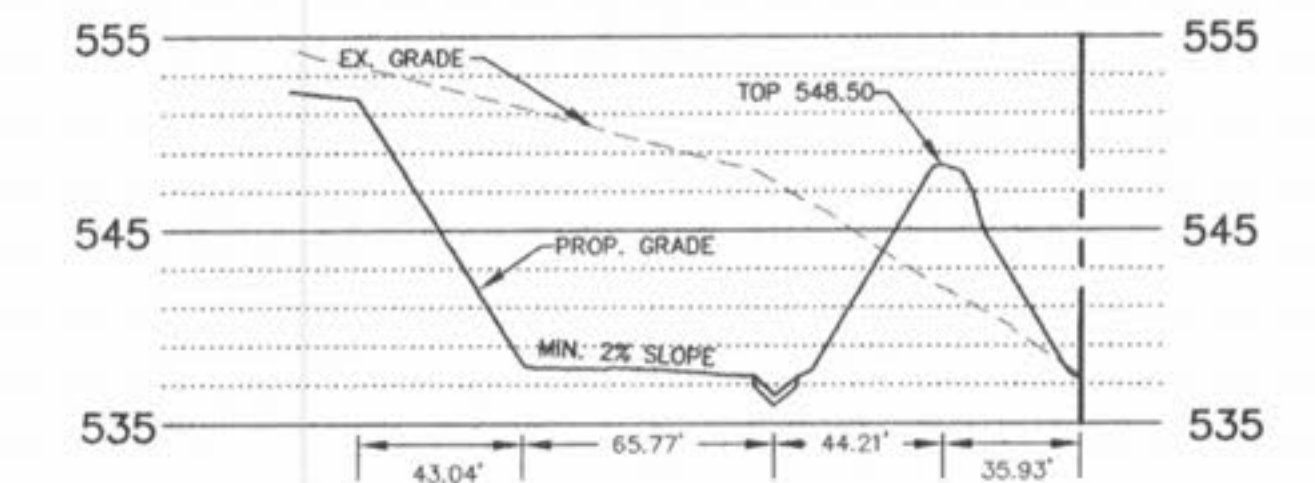
SECTION A-A



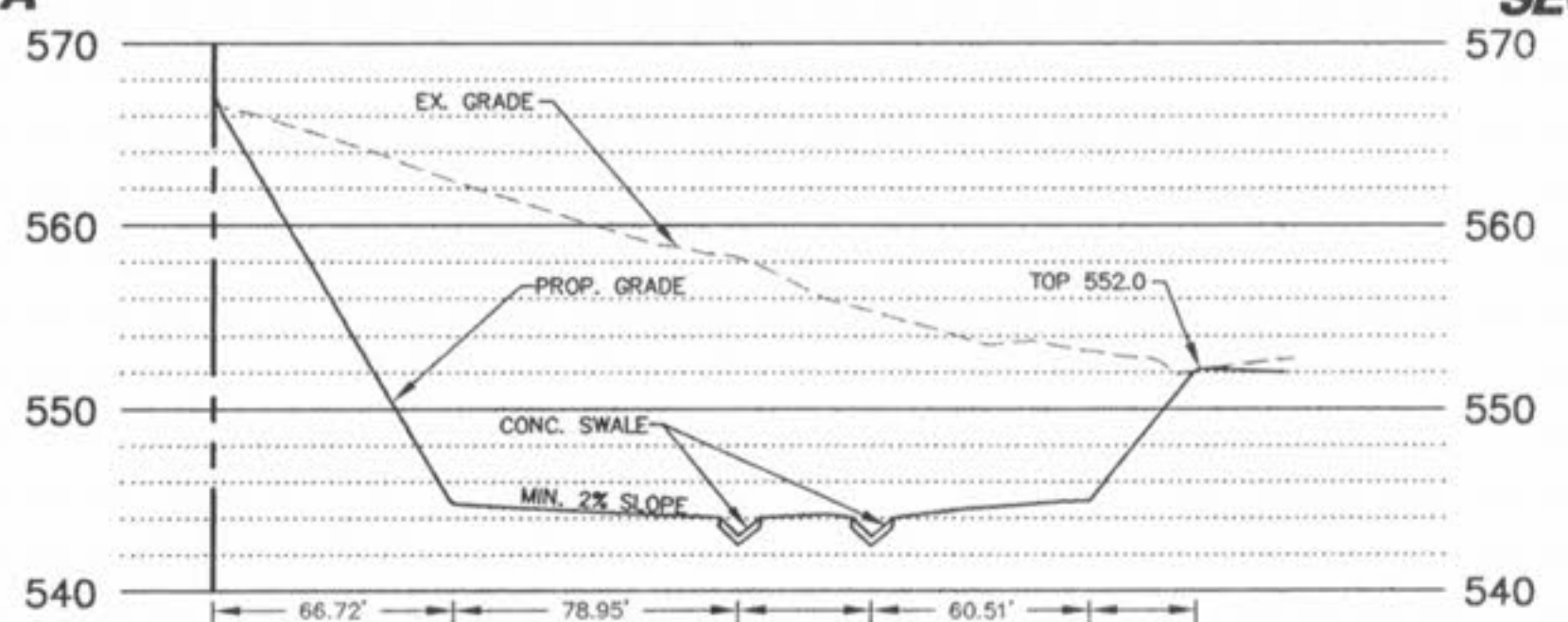
SECTION C-C



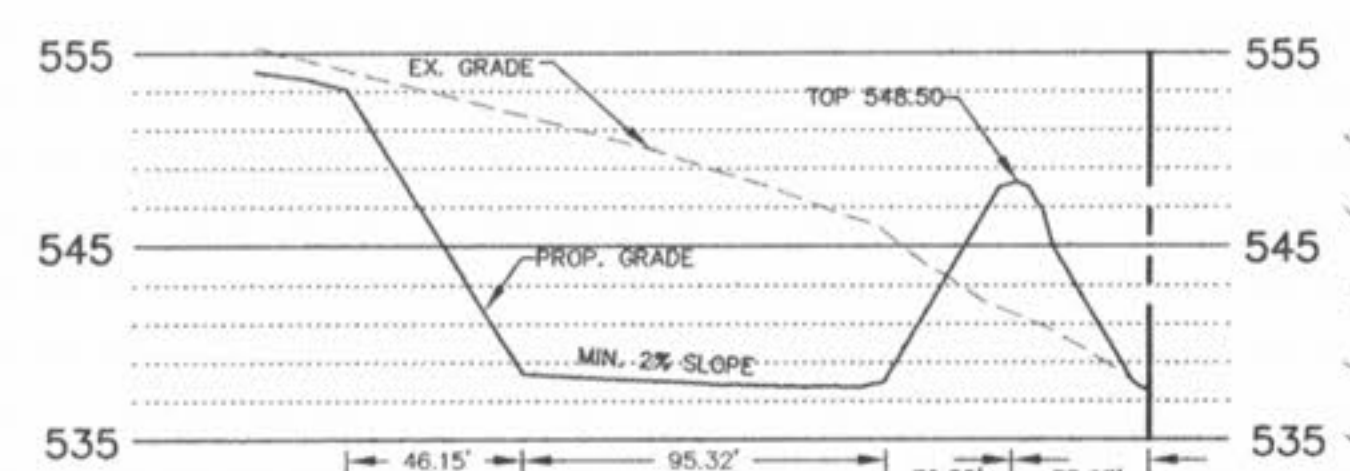
SECTION D-D



SECTION F-F



SECTION B-B

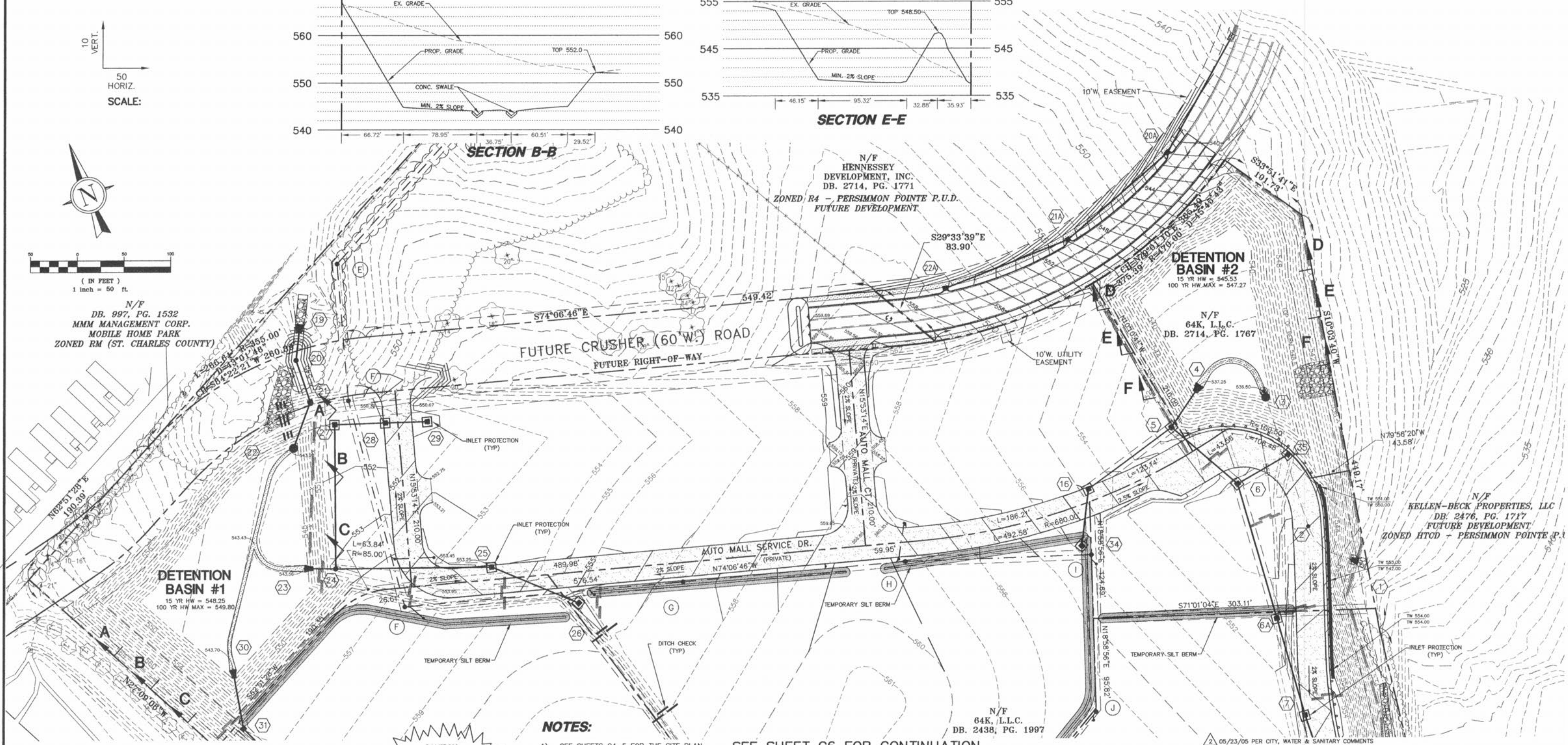


SECTION E-E

10
VERT.
50
HORIZ.
SCALE:



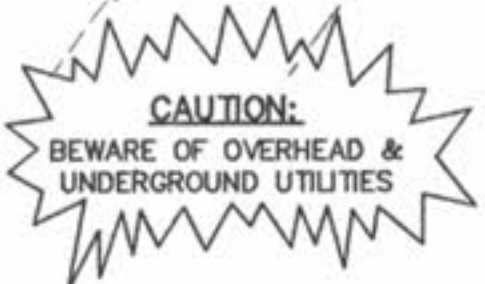
N/F
DB. 997, PG. 1532
MMM MANAGEMENT CORP.
MOBILE HOME PARK
ZONED RM (ST. CHARLES COUNTY)



NOTES:

- 1) SEE SHEETS C4-5 FOR THE SITE PLAN
- 2) SEE SHEETS C6-7 FOR GRADING PLANS
- 3) SEE SHEETS C8-9 FOR GEOMETRICS PLANS
- 4) SEE SHEETS C10-11 FOR SANITARY PLAN AND PROFILES
- 5) SEE SHEETS C12-14 FOR STORM SEWER PROFILES
- 6) SEE SHEETS C15-16 FOR WATER PLAN AND PROFILES

SEE SHEET C6 FOR CONTINUATION



PREPARED FOR:
BRINKMANN CONSTRUCTORS
CONTACT: KEVIN JACOBSMEYER
16650 CHESTERFIELD GROVE RD, SUITE 100
CHESTERFIELD, MO 63005
PH: (636) 537-9700
FAX: (636) 537-9880



P&Z FILE # 3101.05.03

O'FALLON AUTO MALL GRADING PLAN			
J. R. GRIMES CONSULTING ENGINEERS, INC.		12300 OLD TESSON ROAD SUITE 3000 ST. LOUIS, MO. 63128 PH. (314) 849-6100 FAX (314) 849-6010	
DRAWN BY:	DATE:	CHECKED BY:	DATE:
JLW	04/08/05	LJM	04/08/05
JOB NUMBER:	SHEET:		
675N	C7		