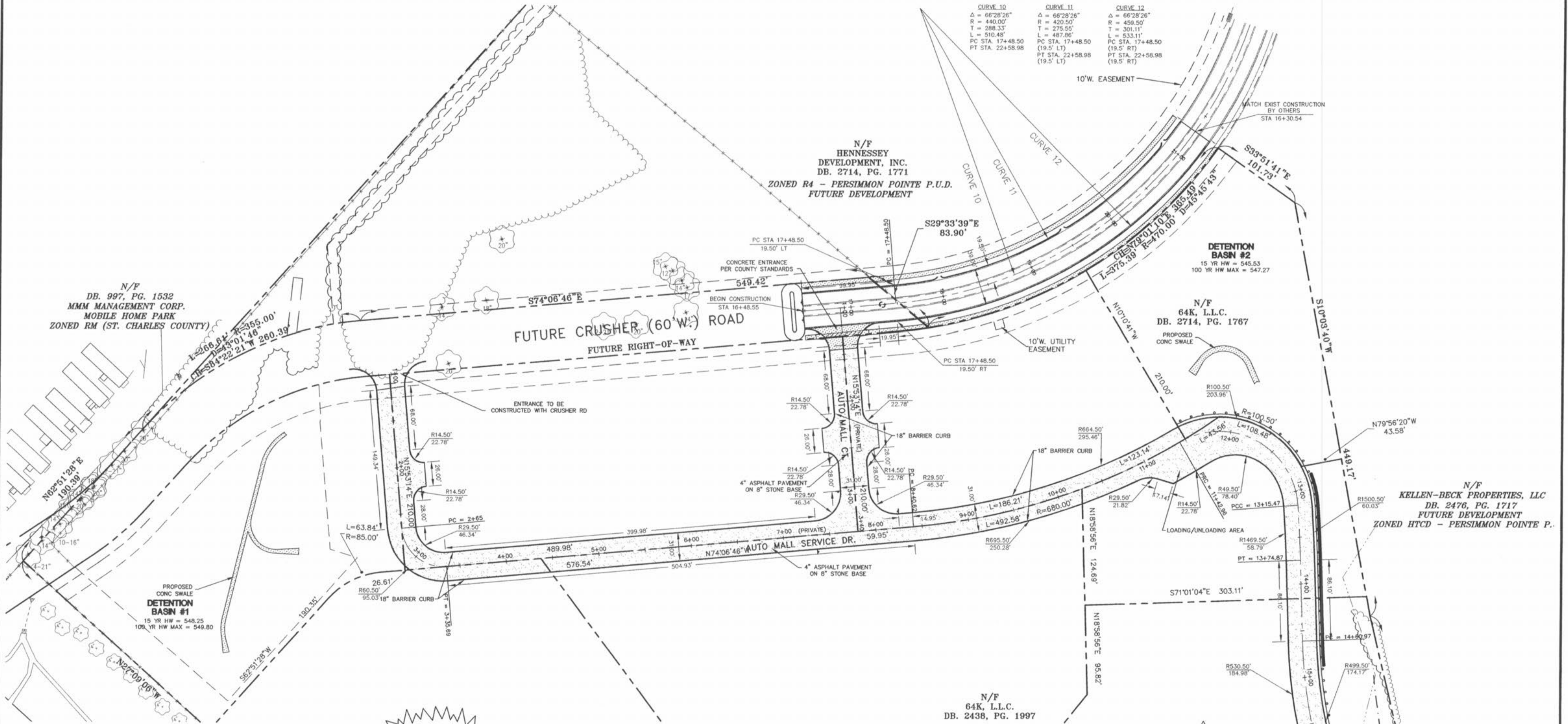


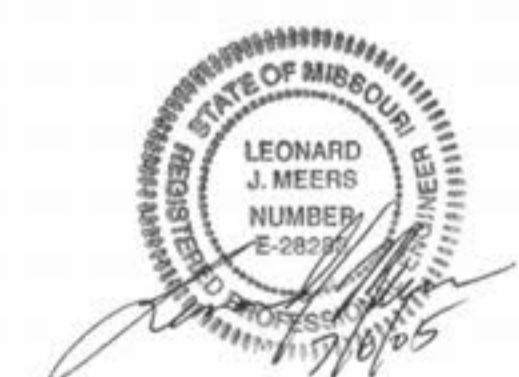
CURVE 10	CURVE 11	CURVE 12
$\Delta = 66^{\circ}28'26''$	$\Delta = 66^{\circ}28'26''$	$\Delta = 66^{\circ}28'26''$
$R = 440.00'$	$R = 420.50'$	$R = 459.50'$
$T = 288.33'$	$T = 275.55'$	$T = 301.11'$
$L = 510.45'$	$L = 487.86'$	$L = 533.11'$
PC STA. 17+48.50	PC STA. 17+48.50	PC STA. 17+48.50
PT STA. 22+58.98	PT STA. 22+58.98	PT STA. 22+58.98
(19.5' LT)	(19.5' LT)	(19.5' RT)



CAUTION:
BEWARE OF OVERHEAD &
UNDERGROUND UTILITIES

SEE SHEET C8 FOR CONTINUATION

PREPARED FOR:
BRINKMANN CONSTRUCTORS
CONTACT: KEVIN JACOBSMEYER
16650 CHESTERFIELD GROVE RD, SUITE 100
CHESTERFIELD, MO 63005
PH: (636) 537-9700
FAX: (636) 537-9880



O'FALLON AUTO MALL			
GEOMETRICS PLAN			
J. R. GRIMES			
CONSULTING ENGINEERS, INC.			
DRAWN BY: JLW DATE: 04/08/05	CHECKED BY: LJM DATE: 04/08/05	JOB NUMBER: 675N	SHEET: C9

P&Z FILE # 3101.05.03

12300 OLD TESSON ROAD
SUITE 3000
ST. LOUIS, MO. 63128
PH. (314) 849-6100
FAX (314) 849-6100