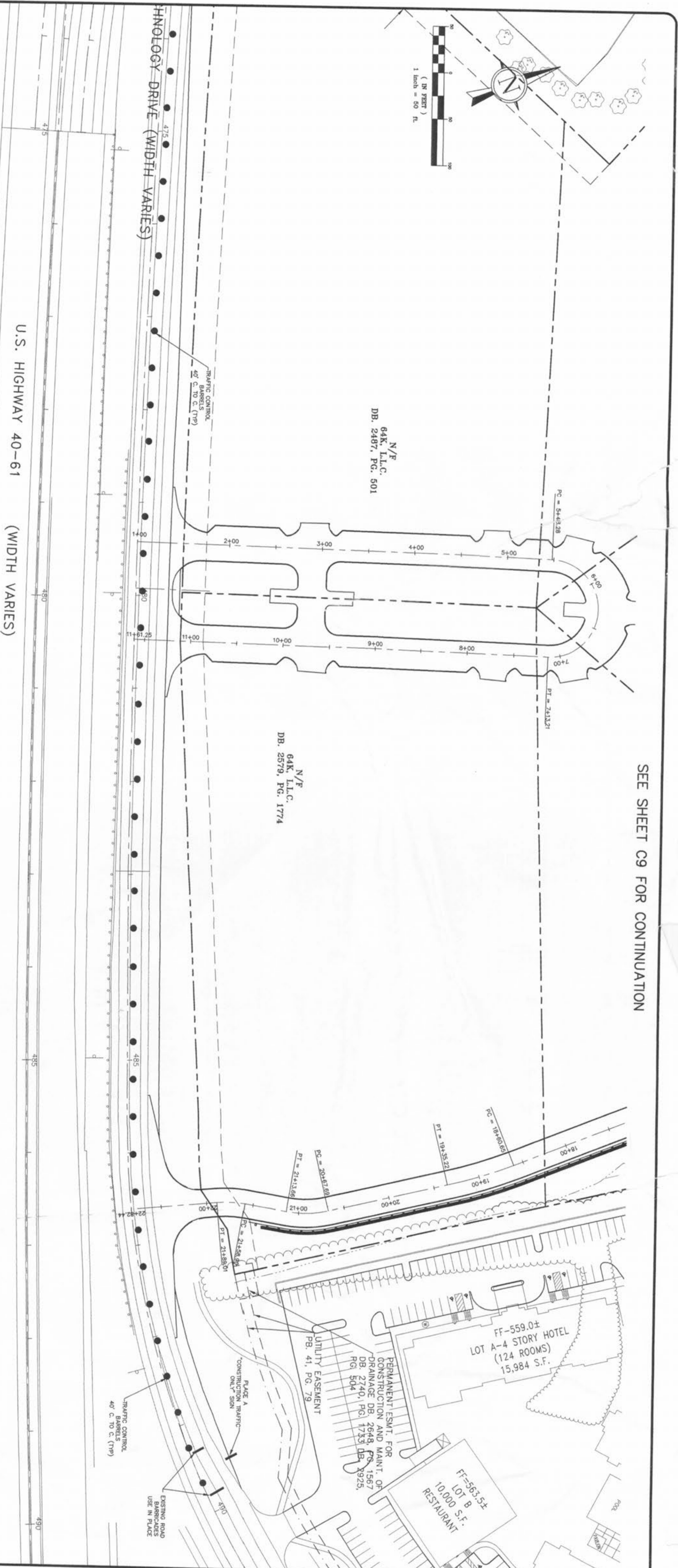


SEE SHEET C9 FOR CONTINUATION



PREPARED FOR:
BRINKMANN CONSTRUCTORS
CONTACT: KEVIN JACOBSMEYER
16650 CHESTERFIELD GROVE RD, SUITE 100
CHESTERFIELD, MO 63005
PH: (636) 537-9700
FAX: (636) 537-9880



08/20/05 PER CITY & MODOT COMMENTS

O'FALLON AUTO MALL
TRAFFIC CONTROL PLAN

J. R. GARLAND
CONSULTING ENGINEERS, INC.

12200 OLD TESSON ROAD
ST. LOUIS, MO 63128
TEL: (314) 946-8100
FAX: (314) 946-5010

P&Z FILE # 3101.05.03

DATE:	04/08/05	REVISION BY:	LJM	DATE:	04/08/05	JOB NUMBER:	675N	SHEET:	C27
DRAWN BY:	JLW	APPROVED BY:							