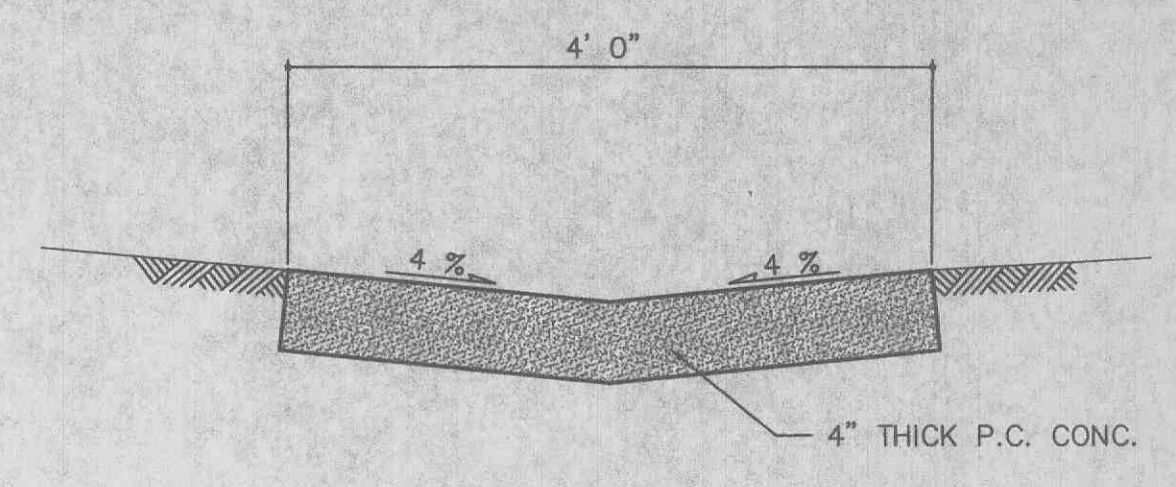
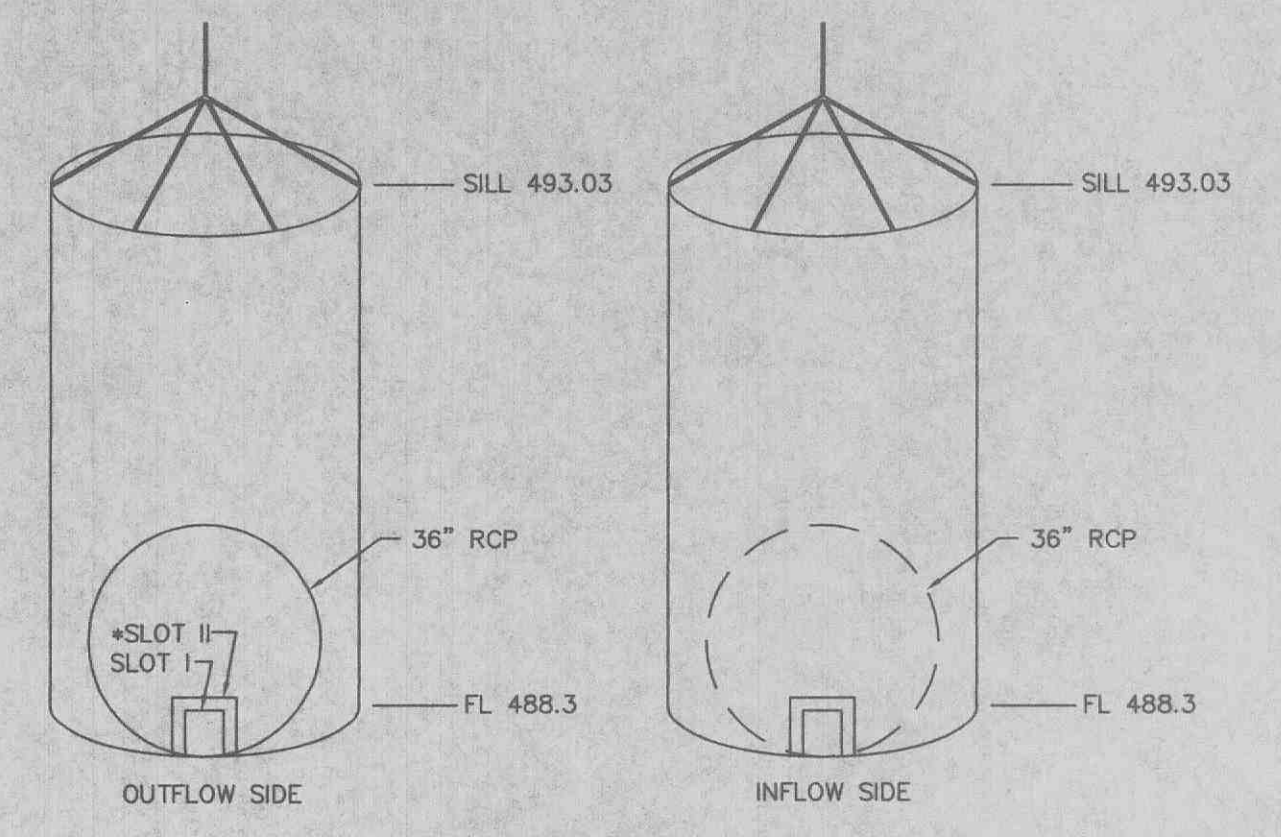


- NOTES:
1. STRAW BALES, NOT HAY BALES SHALL BE USED
  2. BUTT ENDS OF BALES TIGHTLY TOGETHER.
  3. INSTALL BALES WITH BINDING AROUND SIDES, NOT TOP AND BOTTOM.
  4. FILL ANY GAP BETWEEN BALES BY WEDGING LOOSE STRAW BETWEEN THEM.

**SEDIMENT BARRIER**  
 NO SCALE

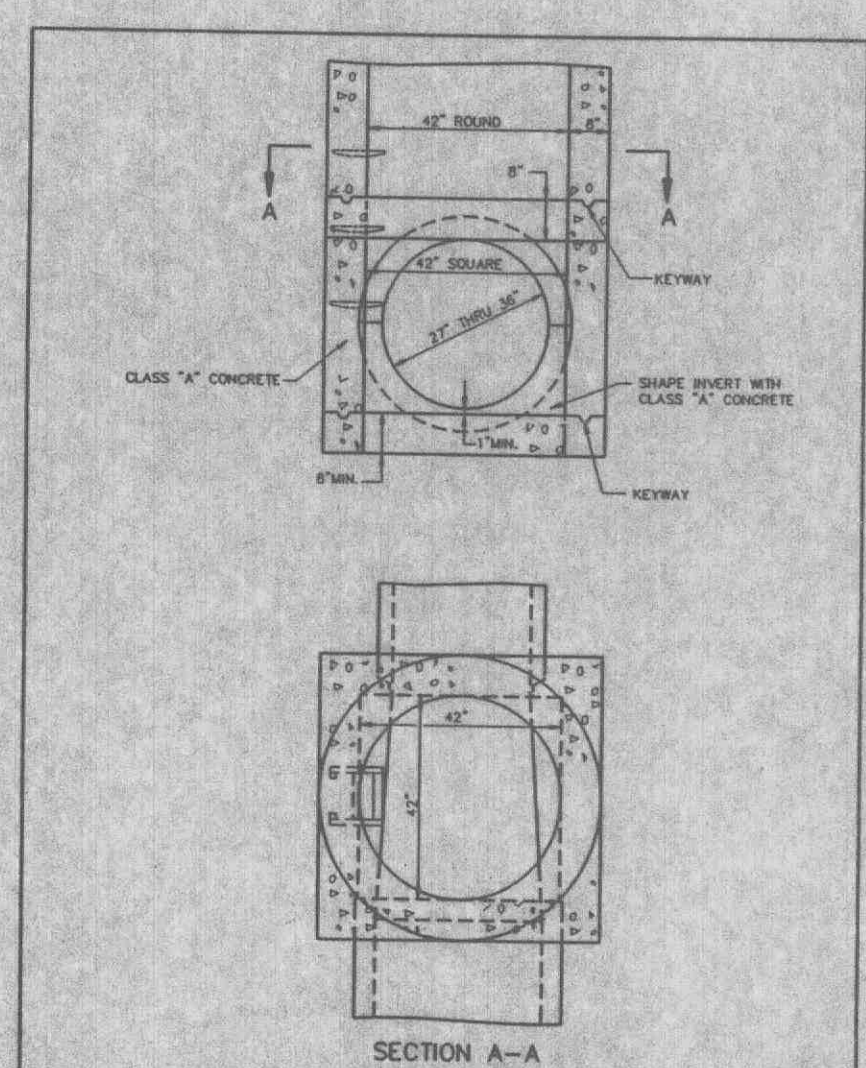


**PAVED SWALE DETAIL**  
 NOT TO SCALE



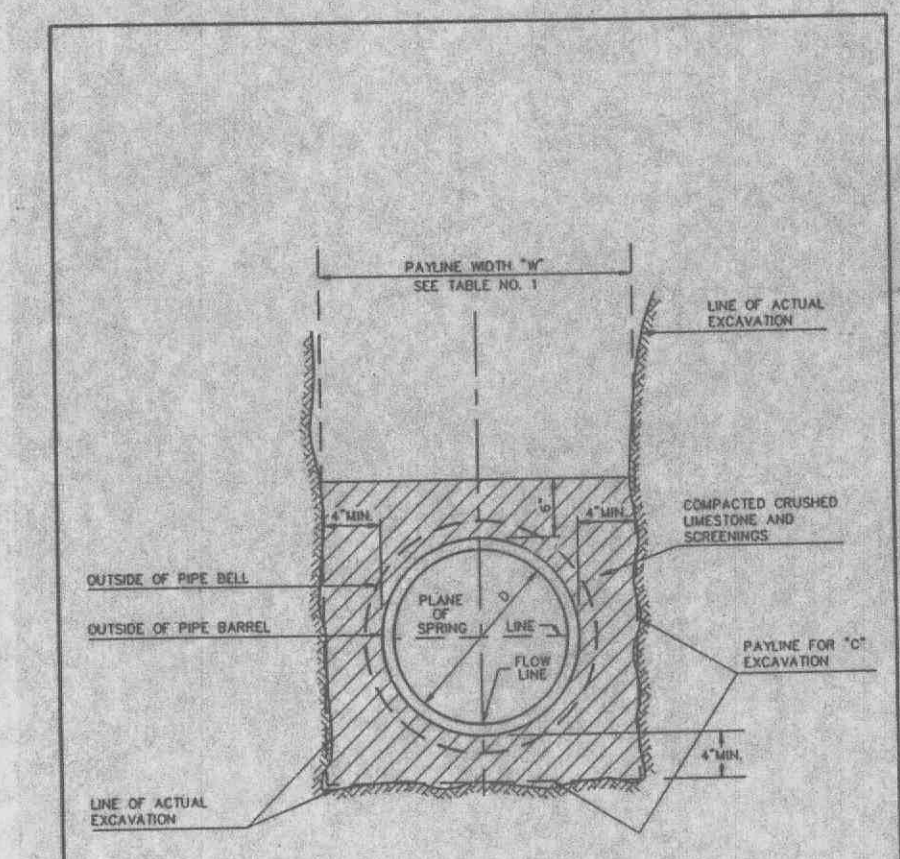
STANDARD 48" AREA INLET STRUCTURE  
 WITH TRASH GUARD AND  
 ANTI-VORTEX DEVICE

**OVERFLOW STRUCTURE DETAIL**  
 NOT TO SCALE



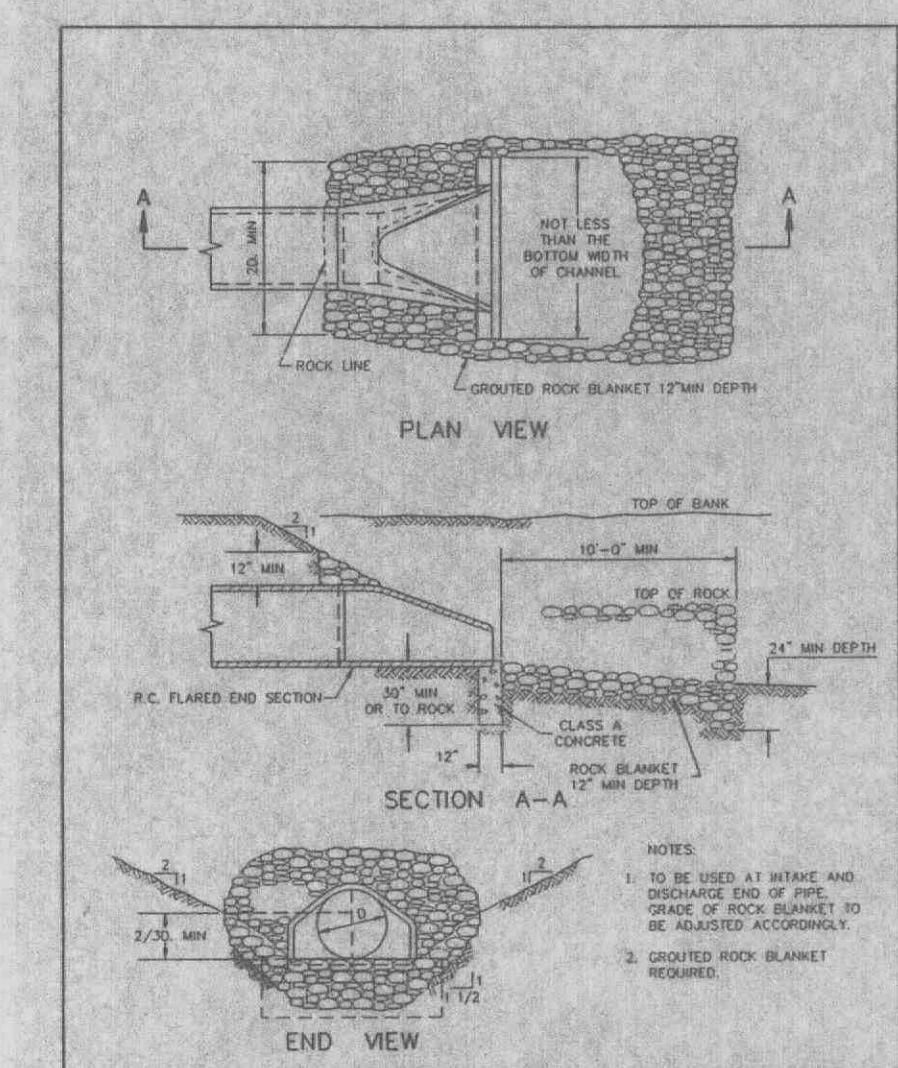
**MANHOLE ON PIPE SEWER**  
 27" THRU 36" (ALTERNATE)

METROPOLITAN ST. LOUIS SEWER DISTRICT  
 Standard Details of Sewer Construction  
 D. W.S.H. / J.C.K. 1992 SHEET 10



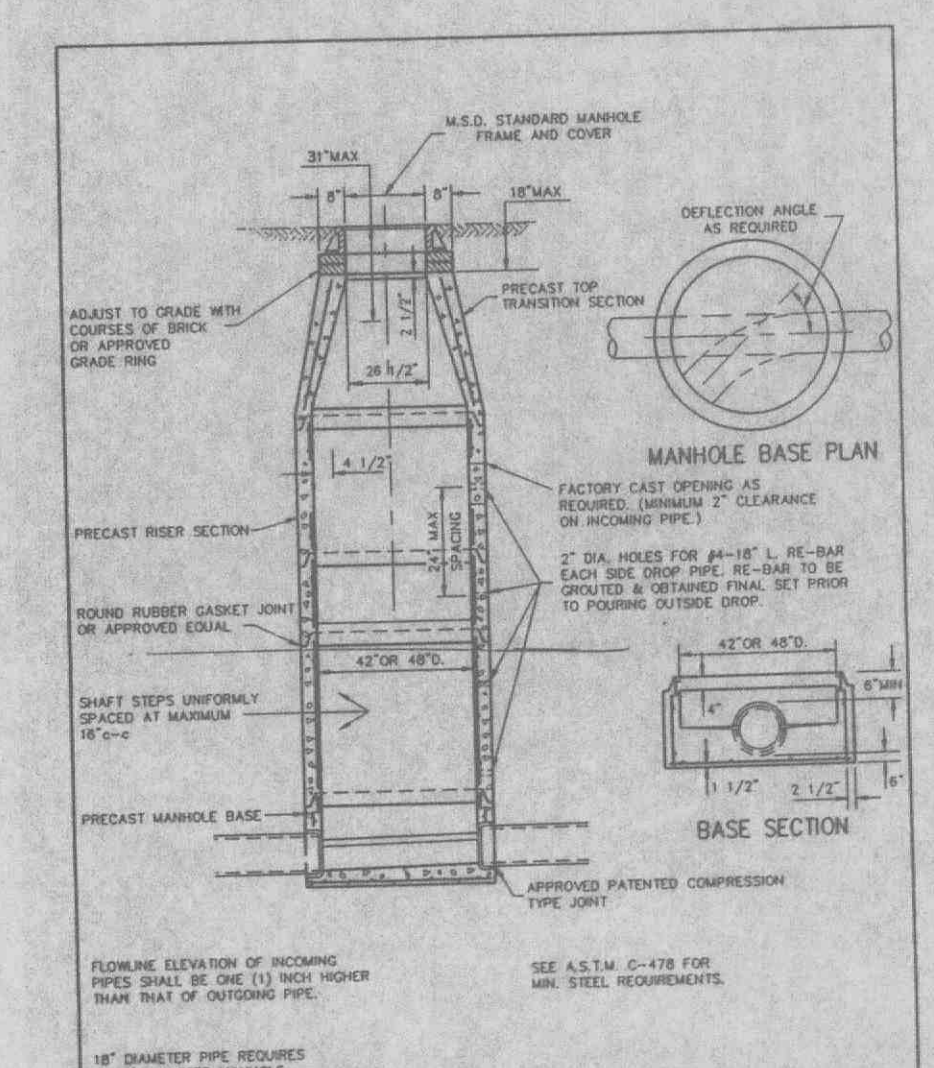
**PIPE BEDDING CLASS "C"**  
 (FOR ALL PIPE EXCEPT  
 REINFORCED CONCRETE PIPE)

METROPOLITAN ST. LOUIS SEWER DISTRICT  
 Standard Details of Sewer Construction  
 D. W.S.H. / J.C.K. 1992 SHEET 3



**FLARED END SECTION**

METROPOLITAN ST. LOUIS SEWER DISTRICT  
 Standard Details of Sewer Construction  
 D. W.S.H. / J.C.K. 1992 SHEET 57



**PRE-CAST CONCRETE MANHOLE**  
 FOR SEWERS  
 8" THROUGH 18"

METROPOLITAN ST. LOUIS SEWER DISTRICT  
 Standard Details of Sewer Construction  
 D. W.S.H. / J.C.K. 1992 SHEET 18