

**KEYED NOTES:**

- 1 SAWCUT EXISTING PAVEMENT FULL DEPTH (TO NEAREST JOINT, WHERE APPLICABLE)
- 2 REMOVE EXISTING CONCRETE AND ASPHALT PAVEMENT
- 3 REMOVE EXISTING GRAVEL
- 4 REMOVE EXISTING WALL
- 5 REMOVE CONCRETE VAULT
- 6 REMOVE AND RELOCATE EXISTING TANK
- 7 REMOVE AND RELOCATE EXISTING PUMP HOUSE
- 8 REMOVE AND REPLACE EXISTING SEWER VENT
- 9 REMOVE EXISTING STORM GRATE INLETS
- 10 REMOVE EXISTING 8" DIP AND 8" PVC STORM PIPE
- 11 REMOVE EXISTING RIP RAP
- 12 REMOVE EXISTING CULVERT WITH FLARED END SECTIONS AND HEAD WALLS
- 13 REMOVE EXISTING FENCE
- 14 REMOVE EXISTING ELECTRIC BOXES
- 15 REMOVE EXISTING CONCRETE TABLE AND PAD
- 16 REMOVE EXISTING TREES
- 17 REMOVE AND REPLACE EXISTING SIGN
- 18 REMOVE AND REPLACE DECORATIVE FENCING
- 19 REMOVE PARKING STRIPING
- 20 REMOVE EXISTING FLARED END SECTION
- 21 REMOVE EXISTING 24" RCP
- 22 REMOVE PAINTED SYMBOL

**NOTES:**

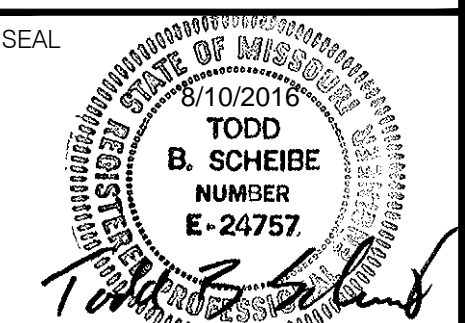
1) THE UTILITIES SHOWN HEREIN WERE PLOTTED FROM AVAILABLE INFORMATION AND DO NOT NECESSARILY REFLECT THE ACTUAL EXISTENCE, NONEXISTENCE, SIZE, TYPE, OR LOCATION OF THESE OR OTHER UTILITIES. THE CONTRACTOR SHALL BE RESPONSIBLE FOR VERIFYING THE ACTUAL LOCATION OF ALL UTILITIES, SHOWN OR NOT SHOWN, AND SAID UTILITIES SHALL BE LOCATED IN THE FIELD PRIOR TO ANY CONSTRUCTION OF IMPROVEMENTS.



ADDITION & RENOVATION FOR  
**O'FALLON CASTING**  
600 CANNONBALL LANE O'FALLON, MISSOURI 63366  
EXISTING CONDITIONS & DEMOLITION PLAN

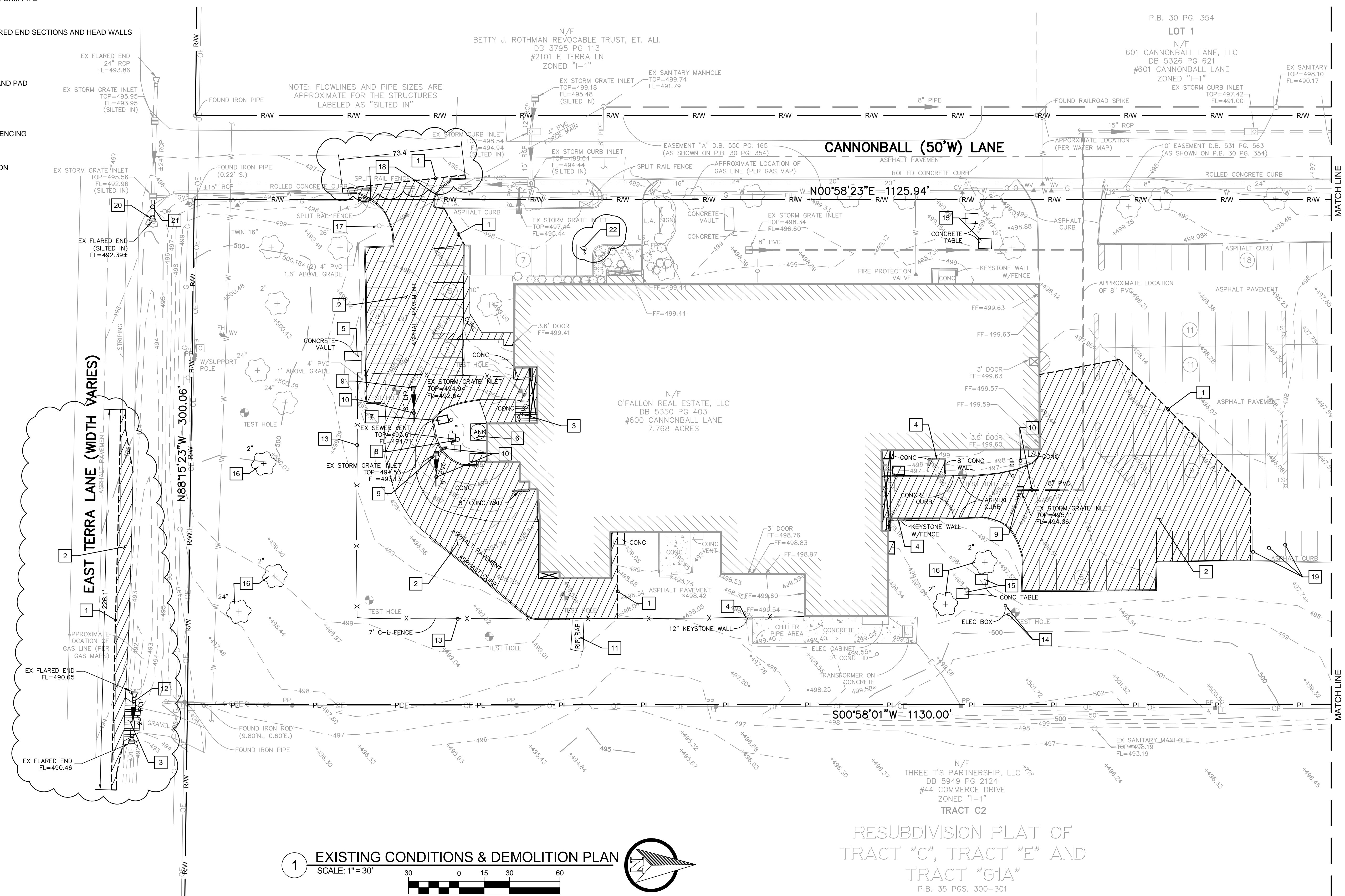
REVISIONS NO.	DATE
3	08/10/2016

ISSUE DATE: MAY 26, 2016  
PROJECT NO.: 15-187  
DRAWN BY: GAS  
CHECKED BY: TBS

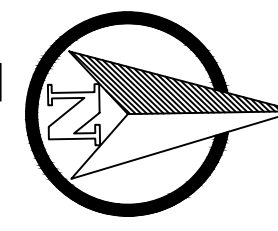
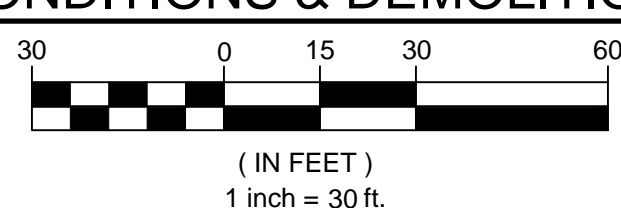


SEAL  
TODD B. SCHEIBE  
NUMBER E-24757

SHEET  
**C2.01**



1 EXISTING CONDITIONS & DEMOLITION PLAN  
SCALE: 1" = 30'



RESUBDIVISION PLAT OF  
TRACT "C", TRACT "E" AND  
TRACT "G1A"  
P.B. 35 PGS. 300-301