

KEYED NOTES:

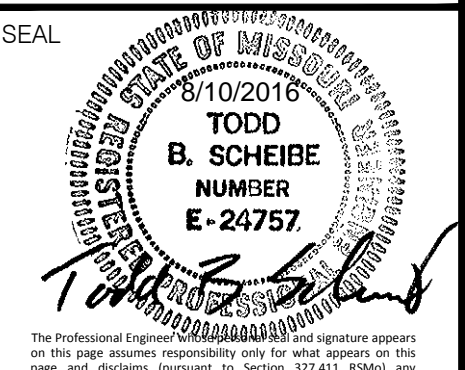
- 1 NEW CONCRETE PAVEMENT (DETAIL 3/8.01)
- 2 NEW 6" VERTICAL CONCRETE CURB (DETAIL 5/8.01)
- 3 NEW CONCRETE SIDEWALK/PATIO (DETAIL 1&2/8.01)
- 4 NEW 6'-6" TALL SIGHT PROOF FENCE
- 5 NEW MOTORIZED SLIDING GATE
- 6 NEW 6'-6" TALL CHAIN-LINK FENCE (DETAIL 4/8.03)
- 7 NEW 4" TALL SIGHT PROOF FENCE
- 8 NEW 4" WIDE CURB GAP (DETAIL 7/8.02)
- 9 NEW ROCK BLANKET (DETAIL 7/8.02)
- 10 EXISTING WELL TO REMAIN IN USE - ADJUST TOP TO GRADE AS NEEDED. PROTECT WITH BOLLARDS (DETAIL 2/8.04)
- 11 RELOCATED DECORATIVE FENCING
- 12 RELOCATED SIGN
- 13 NEW 4" PVC SANITARY FORCE MAIN
- 14 NEW 15" RCP STORM SEWER
- 15 NEW 24" RCP STORM SEWER
- 16 NEW CURB INLET (DETAIL 2/C8.03)
- 17 NEW FLARED END SECTION (DETAIL 2/C8.02)
- 18 NEW OUTLET CONTROL STRUCTURE (DETAIL 1/C8.04)
- 19 NEW MANHOLE
- 20 NEW CLEAN OUT (DETAIL 8/8.02)
- 21 NEW GRAVEL PAVEMENT
- 22 NEW RAISED ISLAND (DETAIL 5/8.03)
- 23 NEW MODULAR BLOCK WALL (DETAIL 9/8.02)
- 24 NEW ELECTRIC CONDUIT (SEE ELECTRIC PLAN)
- 25 NEW ELECTRIC TRANSFORMER (SEE ELECTRIC PLAN)
- 26 RELOCATED TANK (SEE PLUMBING PLAN)
- 27 RELOCATED PUMP HOUSE (SEE PLUMBING PLAN)
- 28 NEW PAVEMENT STRIPING 4" WIDE (MATCH EXISTING)
- 29 NEW ASPHALT PAVEMENT (DETAIL 4/8.01)
- 30 NEW DUMPSTER APRON (DETAIL 3/8.01)
- 31 NEW 15" HDPE STORM SEWER
- 32 NEW 8" PVC STORM SEWER
- 33 NEW 12" HDPE STORM SEWER
- 34 PROVIDE FLEX STORM INLET FILTER (DETAIL 6/8.03)
- 35 NEW CANOPY EDGE
- 36 NEW ACCESSIBLE RAMP (SEE ARCH)
- 37 EMBEDDED RAIL SYSTEM WITH 14" x 3/8" TRASH CONTAINER RUNNER PLATES SET FLUSH WITH CONC. - CONTRACTOR MUST COORDINATE INSTALLATION OF RAIL SYSTEM WITH SUPPLIERS
- 38 TAPER TOP OF VERTICAL CURB FROM 6" TO FLUSH WITH EQUIPMENT PAD AT SOUTH EDGE OF PAD - REMAIN FLUSH WITH PAD TO THE BLDG. FACE
- 39 SITE TRIANGLE EASEMENT
- 40 NEW ACCESSIBLE PARKING SIGN (DETAIL 3/8.04)
- 41 DETENTION BASIN DRAINAGE EASEMENT
- 42 TRANSITION TO 0" CURB IN 1'
- 43 "NO LEFT TURN" SIGN (DETAIL 5/C8.03)
- 44 ADA ACCESSIBLE ROUTE (SEE ENLARGEMENT C/C5.03)
- 45 NEW BIOSOIL MEDIA AT BOTTOM OF BASIN (SHADED, DETAIL 3/C8.03)
- 46 100 YEAR STORM LOW FLOW BLOCKED, ELEV. 494.00 (SEE BASIN CROSS SECTIONS/C6.02)

GENERAL SHEET NOTES:

- 1) THE UTILITIES SHOWN HEREIN WERE PLOTTED FROM AVAILABLE INFORMATION AND DO NOT NECESSARILY REFLECT THE ACTUAL EXISTENCE, NONEXISTENCE, SIZE, TYPE, OR LOCATION OF THESE OR OTHER UTILITIES. THE CONTRACTOR SHALL BE RESPONSIBLE FOR VERIFYING THE ACTUAL LOCATION OF ALL UTILITIES, SHOWN OR NOT SHOWN, AND SAID UTILITIES SHALL BE LOCATED IN THE FIELD PRIOR TO ANY CONSTRUCTION OF IMPROVEMENTS.
- 2) PAVEMENT EDGE TREATMENT WILL BE REQUIRED FOR ANY EDGE DROP GREATER THAN 2" WITHIN MODOT R/W (SEE DETAIL 1/C8.05).
- 3) ALL SIGNS SHALL BE CONTRACTOR FURNISHED.

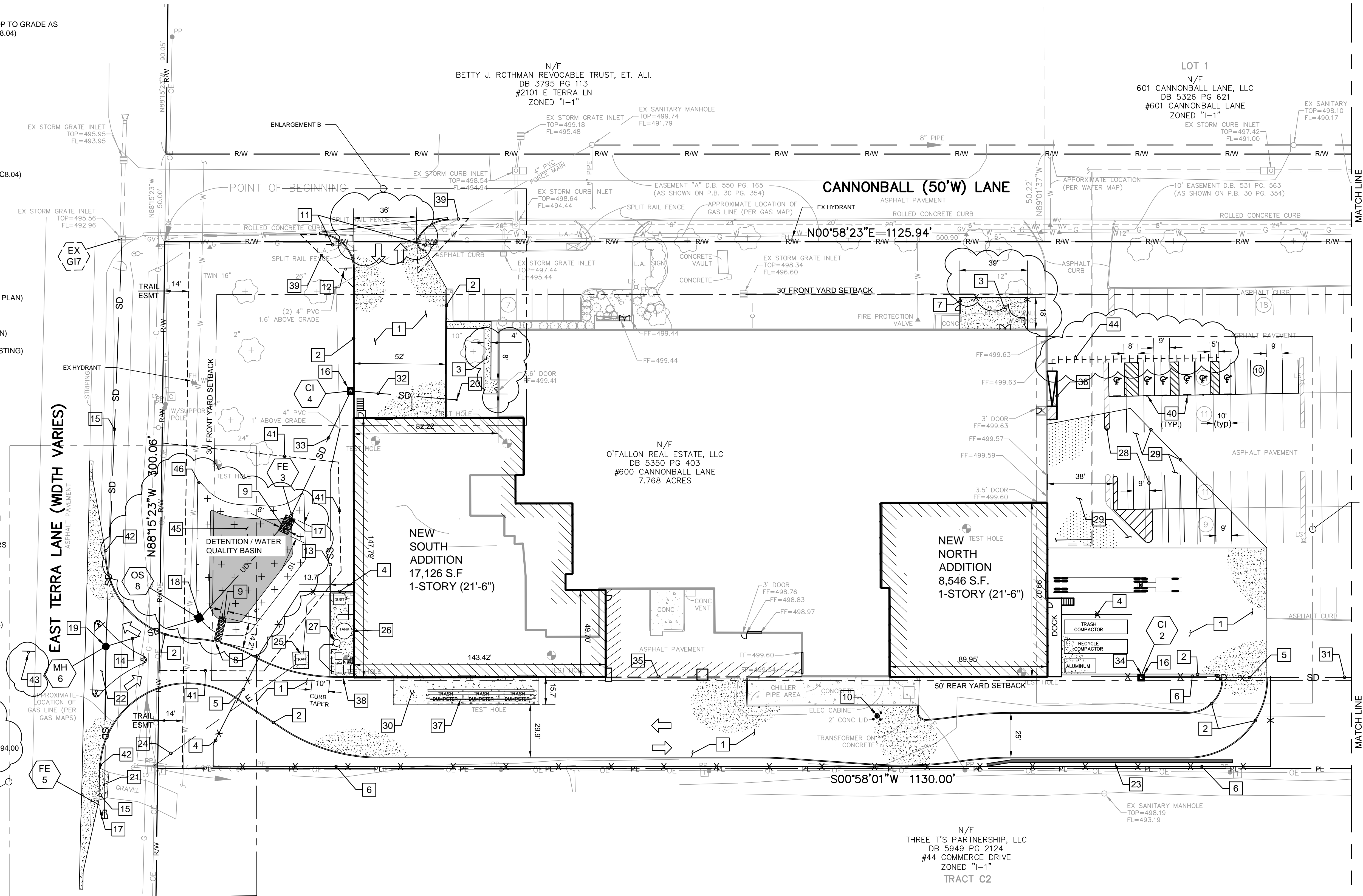
REVISIONS	NO.	DATE
	3	08/10/2016

ISSUE DATE: MAY 26, 2016
PROJECT NO.: 15-187
DRAWN BY: GAS
CHECKED BY: TBS



SHEET

C3.01



1 SITE AND UTILITY PLAN

SCALE: 1" = 30'