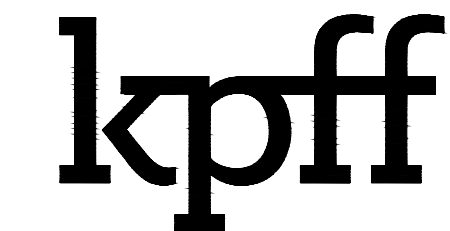
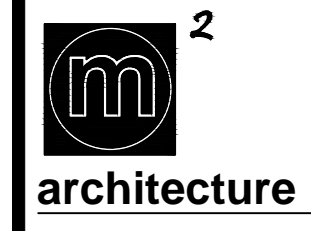


**GENERAL SHEET NOTES:**

1) THE UTILITIES SHOWN HEREIN WERE PLOTTED FROM AVAILABLE INFORMATION AND DO NOT NECESSARILY REFLECT THE ACTUAL EXISTENCE, NONEXISTENCE, SIZE, TYPE, OR LOCATION OF THESE OR OTHER UTILITIES. THE CONTRACTOR SHALL BE RESPONSIBLE FOR VERIFYING THE ACTUAL LOCATION OF ALL UTILITIES, SHOWN OR NOT SHOWN, AND SAID UTILITIES SHALL BE LOCATED IN THE FIELD PRIOR TO ANY CONSTRUCTION OF IMPROVEMENTS.



1630 Des Peres Road, Suite 100  
St. Louis, MO 63131  
314.835.0524  
www.kpff.com  
MO Certificate of Authority #2001010829  
© 2015 kpff Consulting Engineers

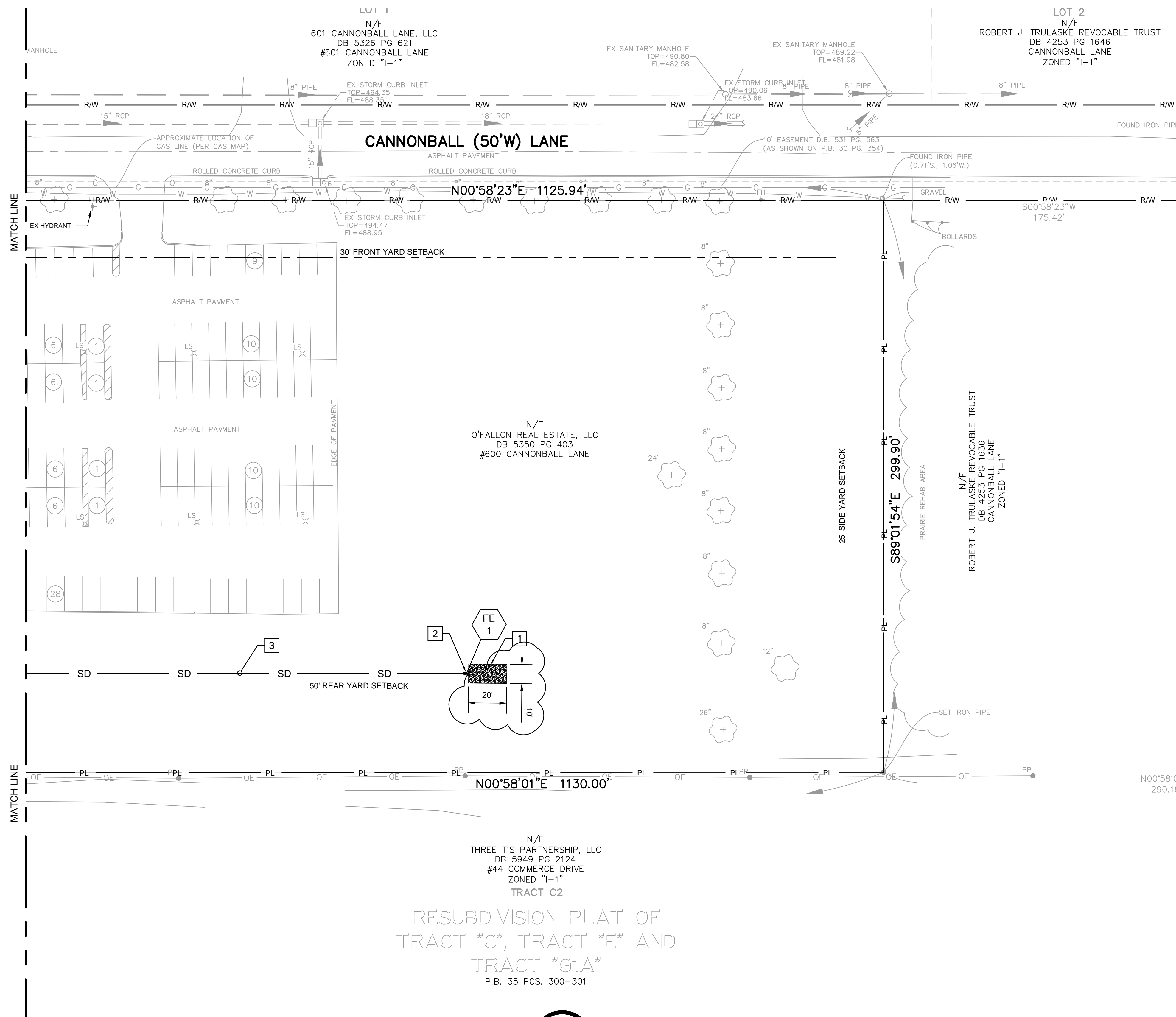


architecture  
engineering  
planning  
interiors

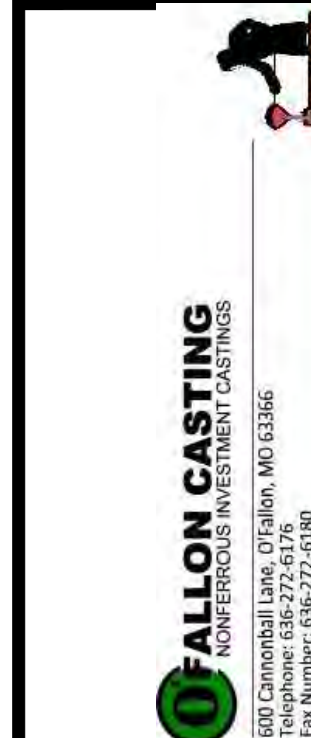
1232 washington ave.  
suite 310  
st. louis, mo 63103  
p: 314.241.6262  
f: 314.241.6263  
www.m2astudio.com

**KEYED NOTES:**

- 1 NEW ROCK BLANKET (DETAIL 2/8.02)
- 2 NEW FLARED END SECTION (DETAIL 2/C8.02)
- 3 NEW 15" HDPE STORM SEWER



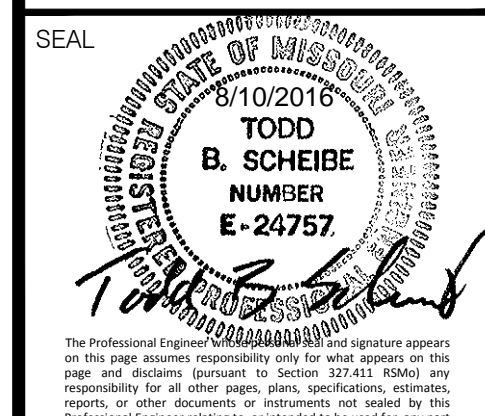
RESUBDIVISION PLAT OF  
TRACT "C", TRACT "E" AND  
TRACT "G/A"  
P.B. 35 PGS. 300-301



ADDITION & RENOVATION FOR  
**O'FALLON CASTING**  
600 CANNONBALL LANE O'FALLON, MISSOURI 63366  
SITE AND UTILITY PLAN

REVISIONS NO.	DATE
3	08/10/2016

ISSUE DATE: MAY 26, 2016  
PROJECT NO.: 15-187  
DRAWN BY: GAS  
CHECKED BY: TBS



SHEET  
**C3.02**