

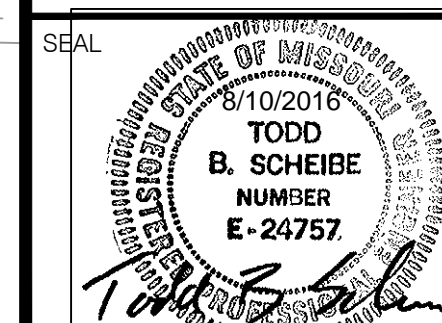


FALLON CASTING
Missouri Professional Engineer and Surveyor
Fallon Casting, LLC
1232 Washington Ave., Suite 310
St. Louis, MO 63103
Phone Number: 314-272-6171
Fax Number: 314-272-6180

ADDITION & RENOVATION FOR
O'FALLON CASTING
600 CANNONBALL LANE OFALLON, MISSOURI 63366
EXISTING DRAINAGE AREA MAP

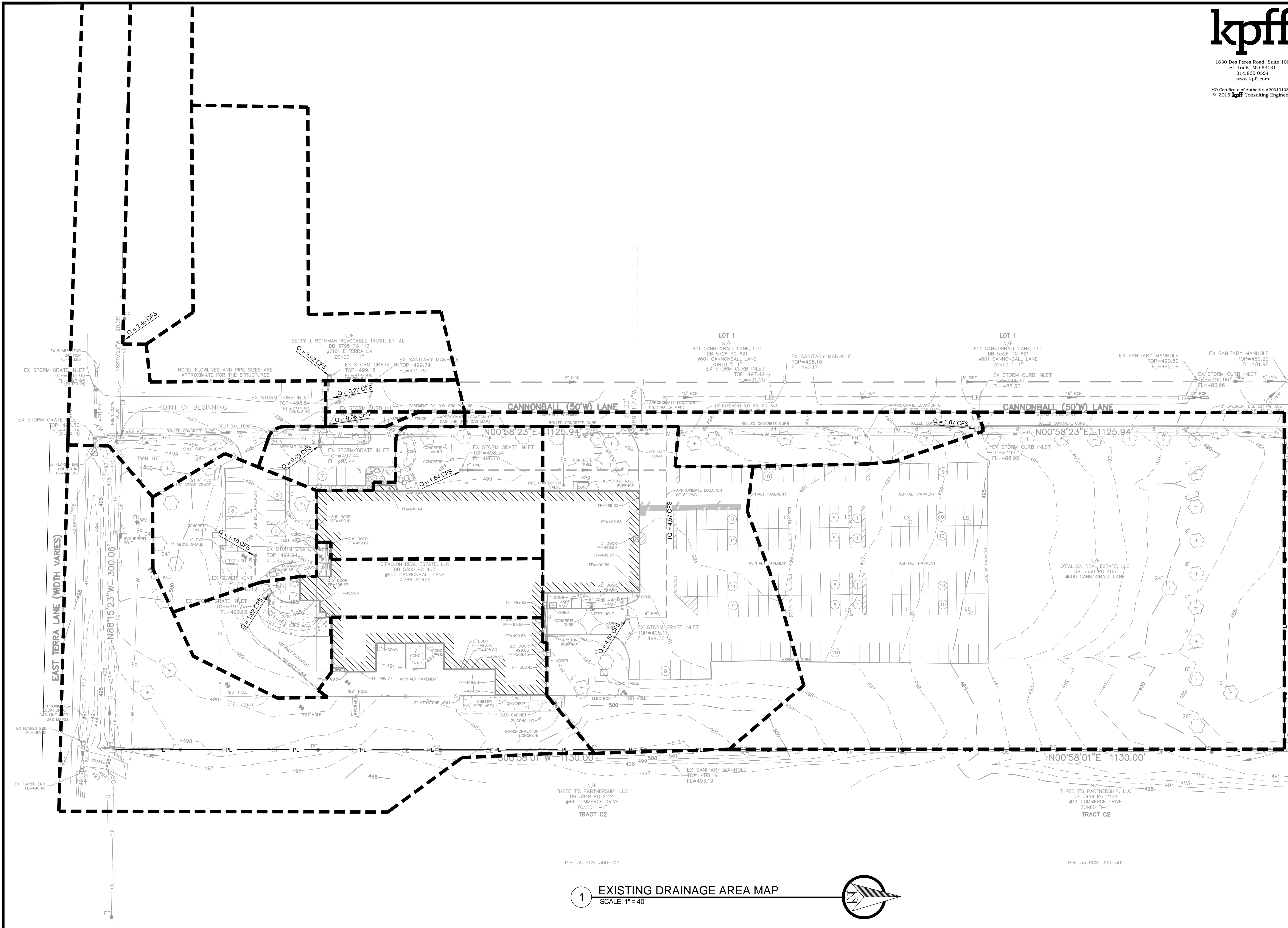
NO.	DATE
3	08/10/2016

ISSUE DATE: MAY 26, 2016
PROJECT NO.: 15-187
DRAWN BY: GAS
CHECKED BY: TBS



The Professional Engineer responsible for this project and signature appears on page 30 of this document. In January 2016, the Missouri Board of Professional Engineers adopted a new seal design. The seal design on this page is the old design and is no longer valid. The Professional Engineer responsible for this project and signature appears on page 30 of this document.

SHEET
C7.02
EXISTING DRAINAGE AREA MAP



P.B. 35 PGS. 300-301

P.B. 35 PGS. 300-301

1 EXISTING DRAINAGE AREA MAP
SCALE: 1"=40'