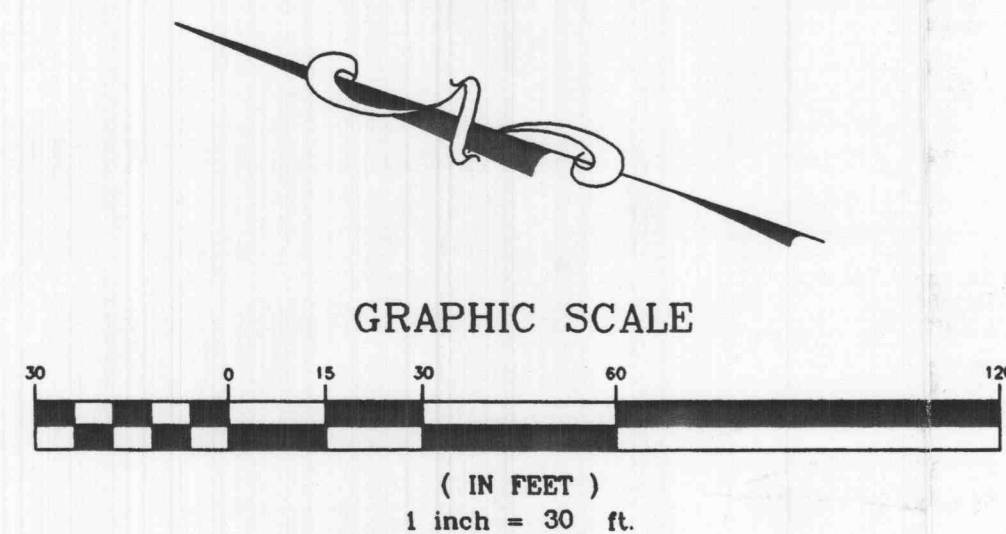
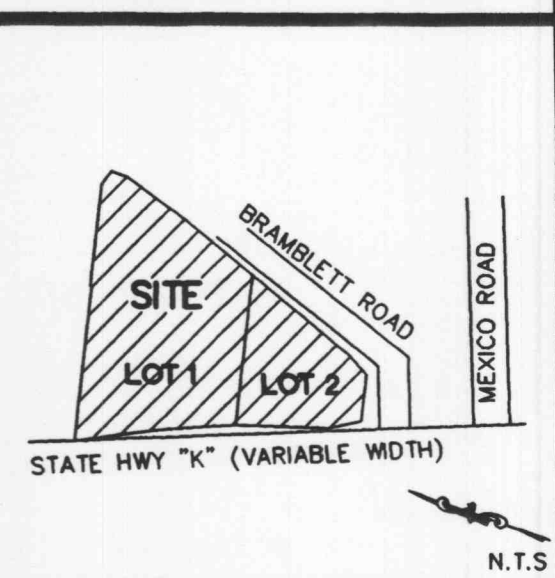
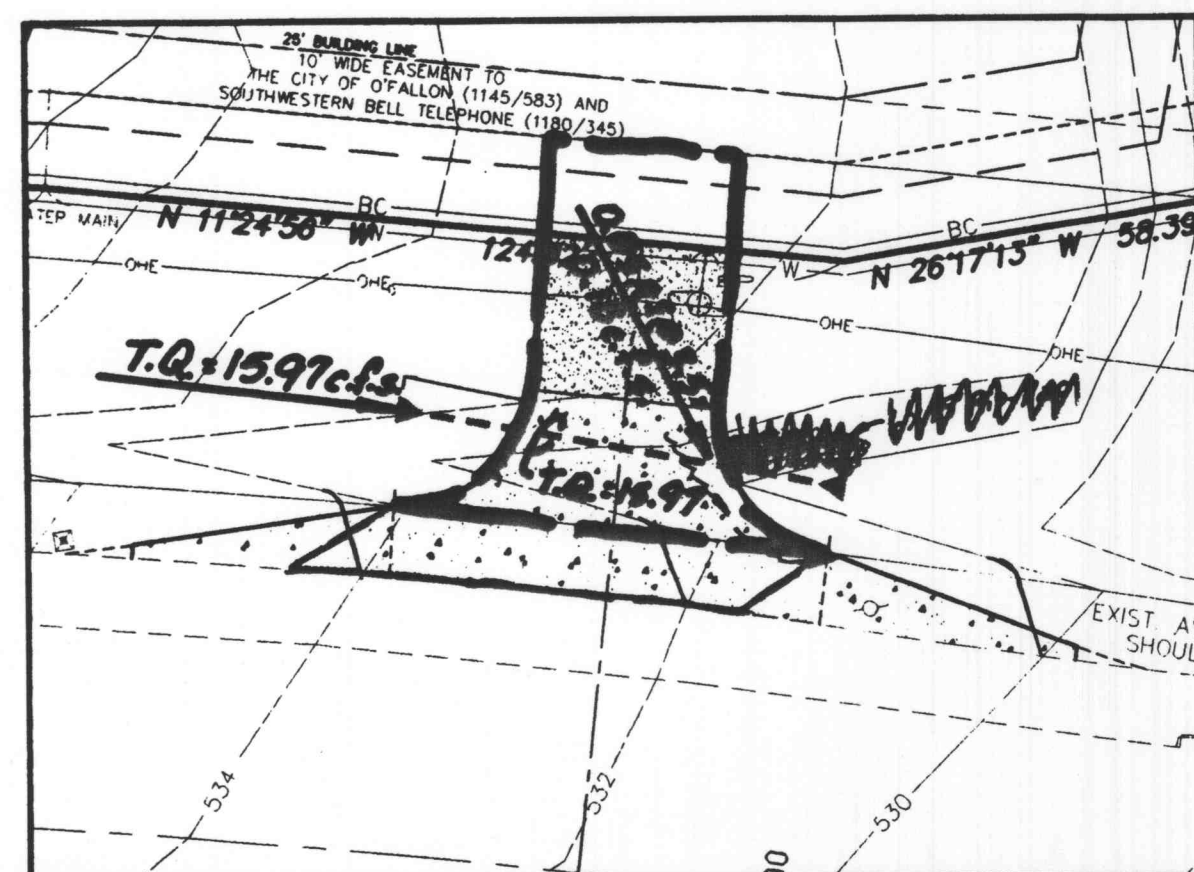


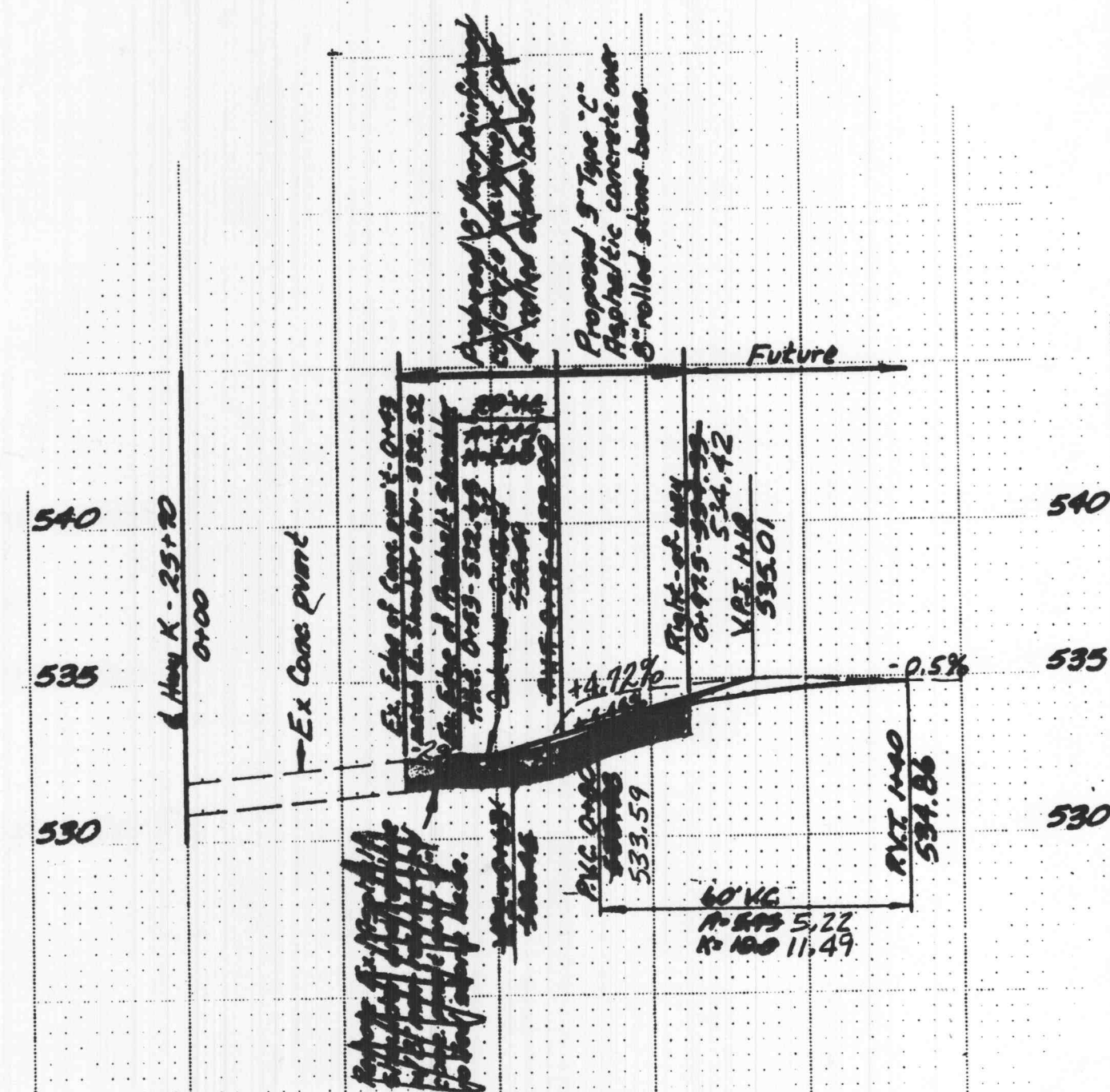
LOCATION MAP



STATE HIGHWAY 'K' ENTRANCE PLAN FOR
O'FALLON CENTER
 LOT 2
 PART OF FRACTIONAL SECTION 33
 TOWNSHIP 47 NORTH, RANGE 3 EAST
 CITY OF O'FALLON, ST. CHARLES COUNTY, MISSOURI

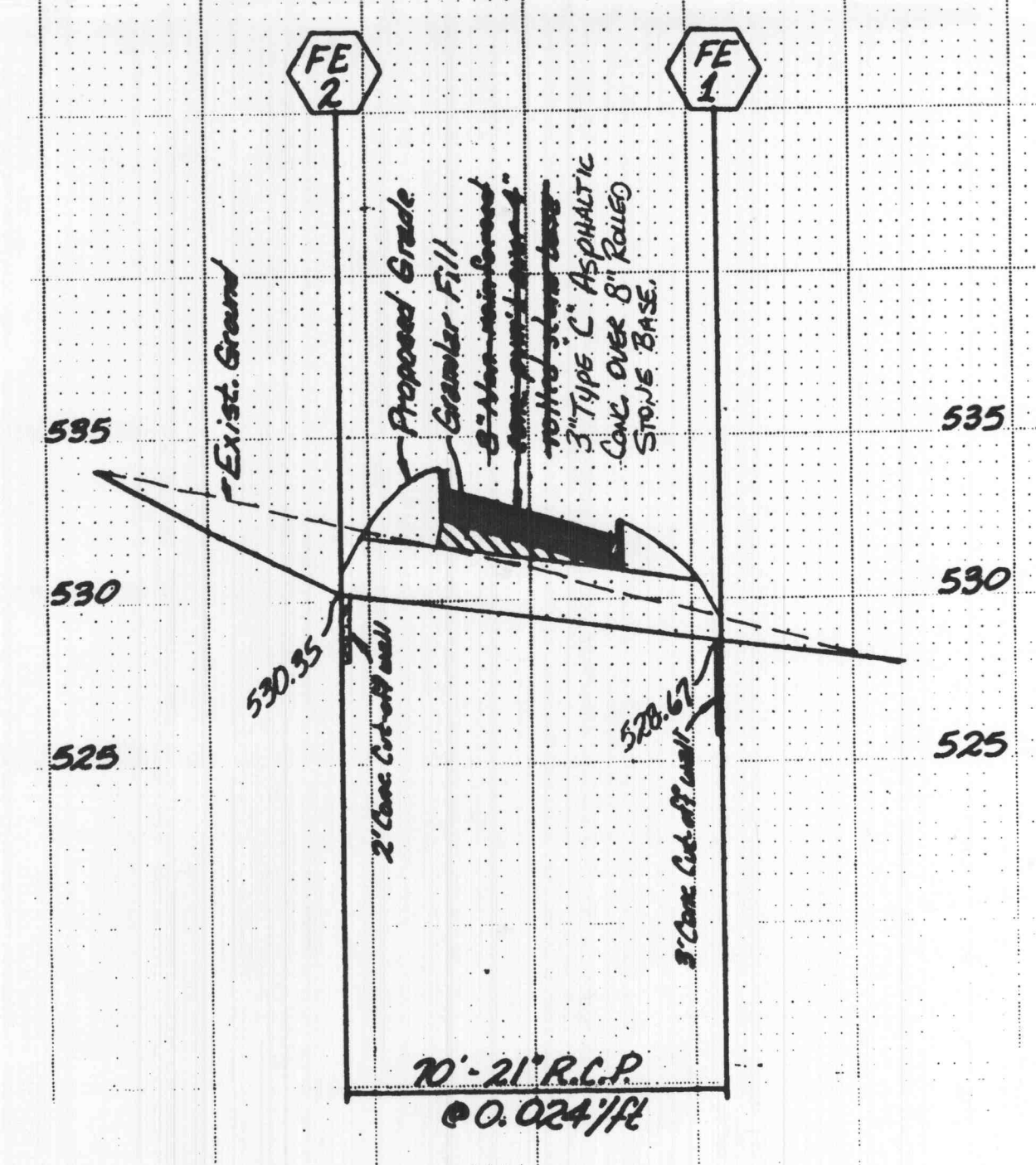
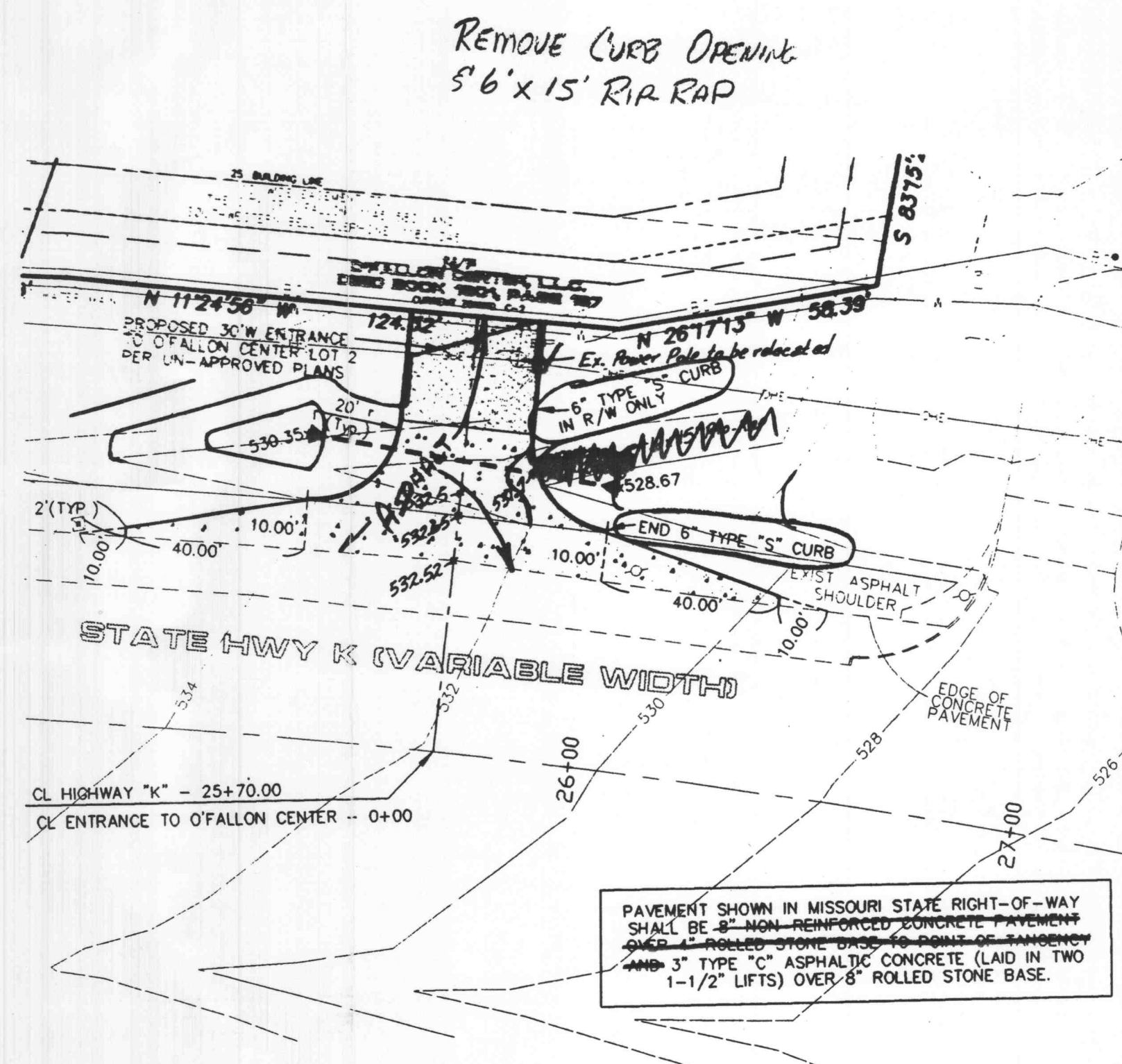


DRAINAGE AREA PLAN



ENTRANCE PROFILE

Scale: Horiz. 1"=30'
 Vert. 1"=5'



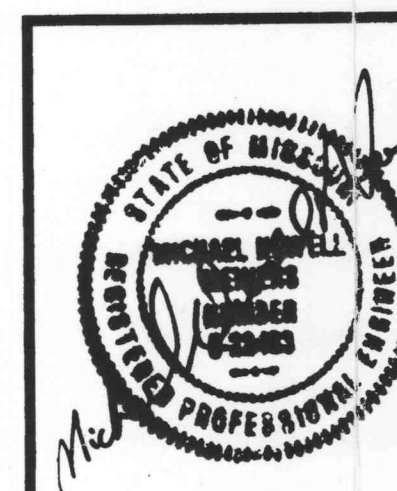
STORM SEWER PROFILE

Scale: Horiz. 1"=30'
 Vert. 1"=5'

MODIFICATIONS ON PERMIT COPIES
 By Mo DOT - Permit # 6-97-0898
 SEE LETTER DATED NOV. 13, 1997 (ATTACHED)

**ENTRANCE PLAN FOR
 O'FALLON CENTER
 LOT 2**

Owner / Developer / Prepared for:
 O'Fallon Properties, LLC
 7777 Bonhomme Ave., Suite. 2200
 St. Louis, MO 63105
 (314) 240-4501



ENGINEERS AUTHENTICATION		The responsibility for the professional engineering liability on this project is hereby limited to the set of plans authenticated by the seal, signature and date hereunder attached. Responsibility is disclaimed for all other engineering plans involved in the project and specifically excludes revisions after this date unless reauthenticated.	
REVISED -	SHEET 1	OF 1	ORDER NO.
S C E S		ST. CHARLES ENGINEERING & SURVEYING	96-0927-07
		801 S. FIFTH STREET, SUITE 202	DATE
		ST. CHARLES, MO 63301	10/06/97
		TEL:(314) 947-0607 FAX:(314) 947-2448	