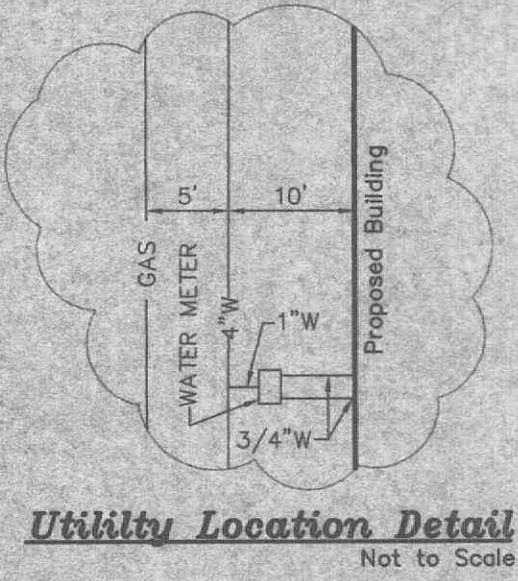
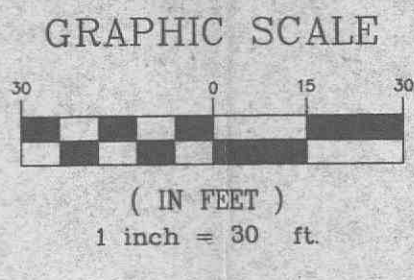


A UTILITY PLAN FOR
O'FALLON COMMONS
 A TRACT OF LAND BEING PART OF
 U.S. SURVEY 67
 TOWNSHIP 46 NORTH, RANGE 3 EAST
 OF THE FIFTH PRINCIPAL MERIDIAN
 ST. CHARLES COUNTY, MISSOURI



Utility Location Detail
 Not to Scale

N / F
CAPLACO TWENTY-NINE, INC.
 BK. 1871 PG. 1232

ROYALL SPRINGS PLAT ONE
 PB. 31 PG. 70-71

N / F
ROBIN DRIVE INVESTMENTS, L.L.C.
 BK. 1896 PG. 2084

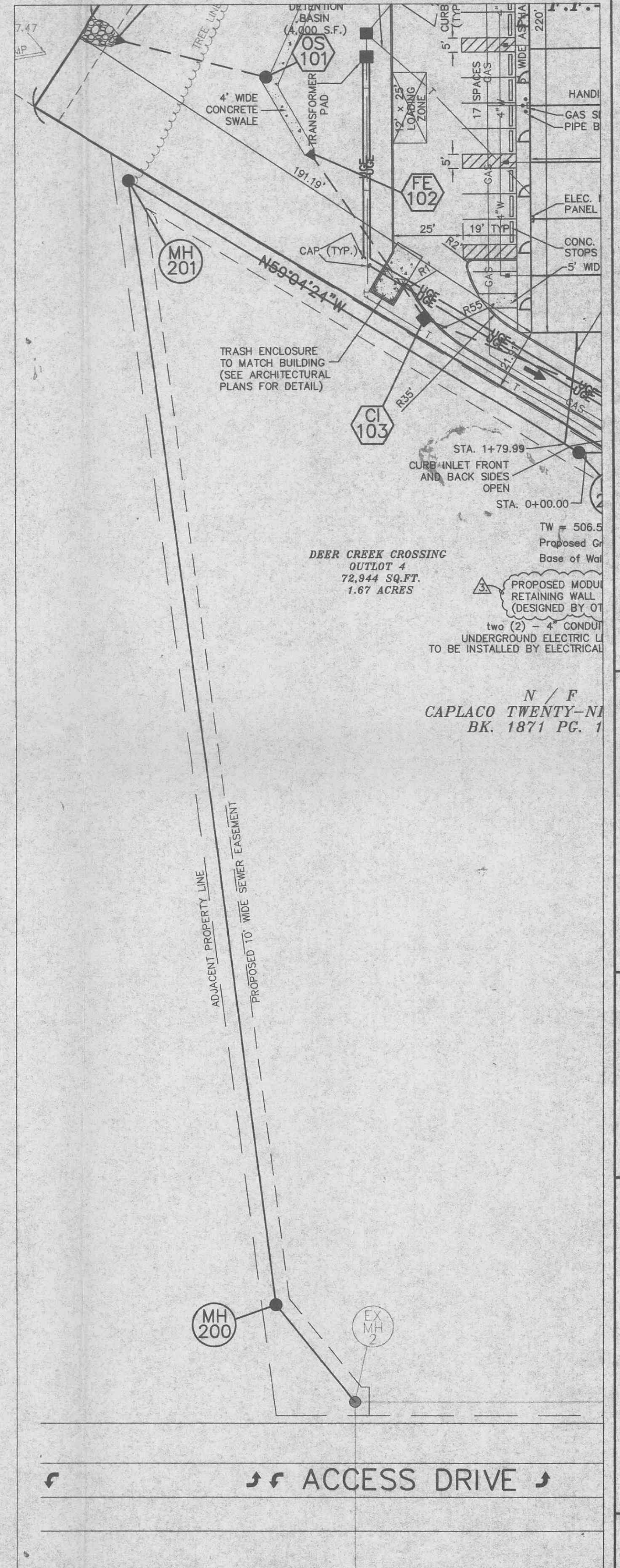
PROPOSED RETAIL BUILDING
 13,200 S.F.
 F.F. = 507.60

FUTURE RETAIL BUILDING
 (6000 S.F.)
 (F.F. = 506.00)
 BUILDING PAD
 SUBGRADE
 505.3

N / F
CAPLACO TWENTY-NINE, INC.
 BK. 1871 PG. 1232

LOT 5
 54,990 SQ.FT.
 1.26 ACRES

MISSOURI STATE HIGHWAY "K"



OFFSITE SANITARY EXTENSION

PREPARED FOR:
WOLFF PROPERTIES
 225 SOUTH MERAMEC AVENUE
 SUITE 301
 ST. LOUIS, MISSOURI 63105
 (314) 727-9800

N / F
CAPLACO TWENTY-NINE, INC.
 BK. 1871 PG. 1

Copyright 1997
 BSA Engineering Company, Inc.
 All Rights Reserved

REVISIONS

NO.	DATE	DESCRIPTION
4-5-99		CITY COMMENTS
4-9-99		REVISIONS
4-26-99		REVISIONS
5-6-99		ADDENDUM #1
5-25-99		ADDENDUM #2
6-15-99		DUCKETT COMMENTS
6-29-99		ADDENDUM #3
8-26-99		HYDRANT/CURB CUT
10-15-99		ADDENDUM #4

BSA
 ENGINEERING
 PLANNING
 SURVEYING

1062 South Cloverleaf Drive
 St. Peters, MO. 63376-6445
 314-928-5552
 FAX 928-1718

01-04-99
 DATE
 97-9265
 PROJECT NUMBER
 C5 OF 8
 SHEET OF
 9265CON.dwg
 FILE NAME
 SCL
 DRAWN CHECKED

\\bsa-gp-01\p\j\j\j\9000\p\j\j\j\9265con.dwg, F:\1\04\15\08\15\40\1999\ALL