

LANDSCAPE SCHEDULE				
SYMBOL	NO.	TYPE	SIZE	MATURE HT.
	3	October Glory Maple Acer rubrum var. October Glory	2" cal.	40'~60'
	2	Red Sunset Maple Acer rubrum var. Red Sunset	2" cal.	40'~60'
	3	Yoshino Cherry Prunus x yedoensis	2" cal.	30'~40'
	2	Flowering Crabapple Malus "Prairiefire"	2" cal.	15'~20'
	6	Arborvitae Thuja occidentalis 'Emerald Green'	6" high	20'~30' IF NOT TRIMMED

TREE PRESERVATION CALCULATIONS:

THERE ARE 3 TREES GREATER THAN 8 INCHES ON THE SITE.

- 1 - 20" DECIDUOUS TREE (IN BUFFER YARD) - TO REMAIN
- 1 - 12" PINE TREE (IN BUFFER YARD) - TO REMAIN
- 1 - 14" PINE TREE (IN BUFFER YARD) - TO REMAIN

REQUIRED TREES: 11

- (1 TREE/40' STREET FRONTAGE)(181.79') = 5
- (1 TREE/3,000 SQ. FT. OPEN AREA)(16,988 SQ. FT.) = 6

TOTAL TREES PROVIDED: 11

REQUIRED PARKING LANDSCAPE:

6% OF PARKING LOT AREA(17,101 SQ. FT.) = 1,026 SQ. FT.

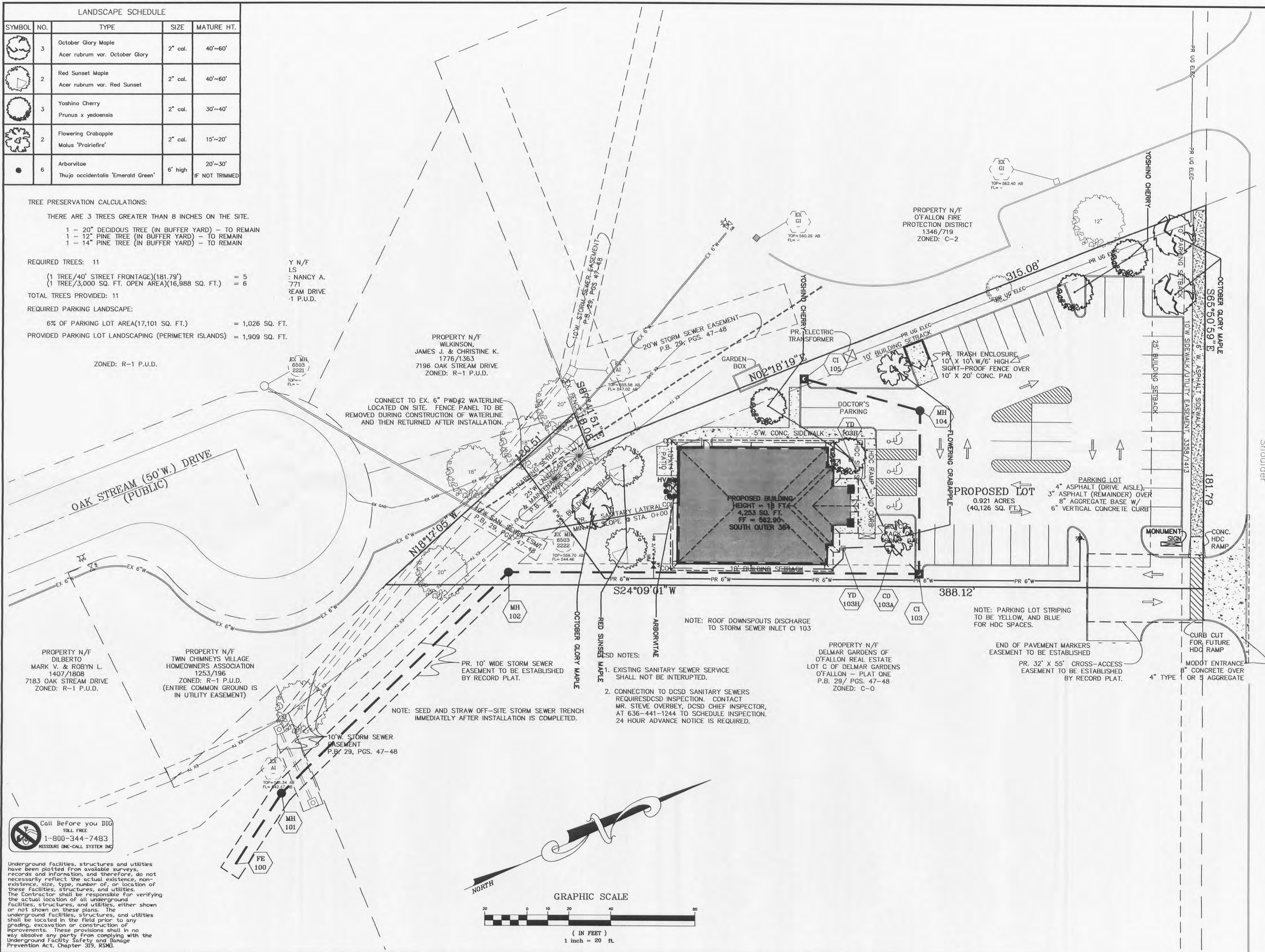
PROVIDED PARKING LOT LANDSCAPING (PERIMETER ISLANDS) = 1,909 SQ. FT.

ZONED: R-1 P.U.D.

Y N/F
LS
: NANCY A.
771
TEAM DRIVE
-1 P.U.D.

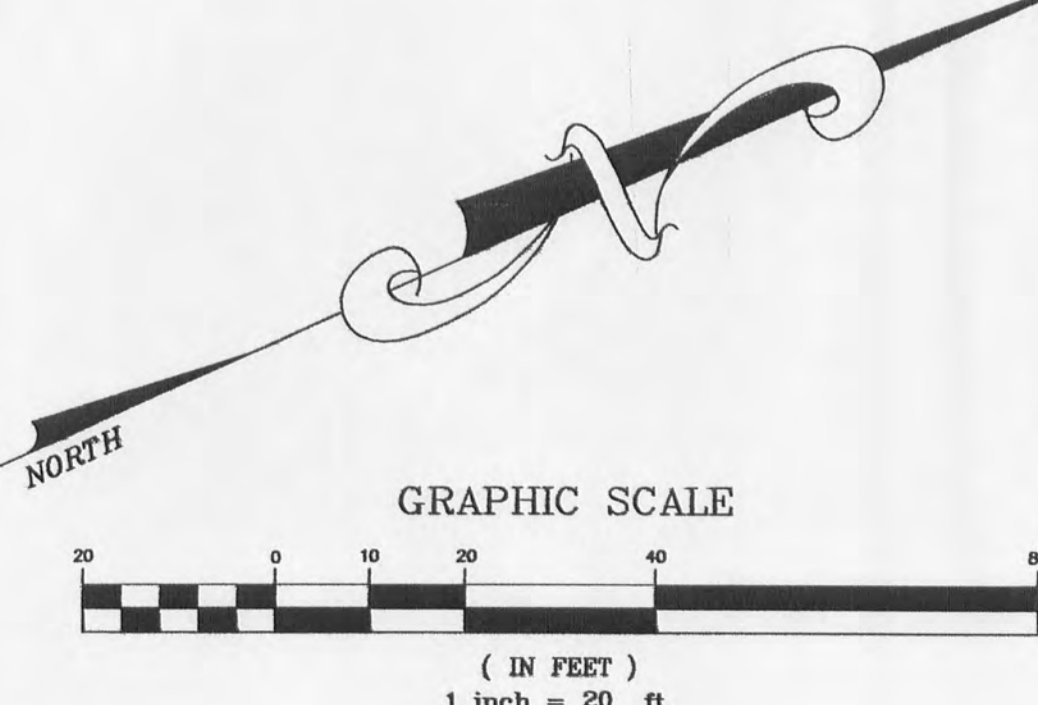
PROPERTY N/F
WILKINSON,
JAMES J. & CHRISTINE K.
1776/1363
7196 OAK STREAM DRIVE
ZONED: R-1 P.U.D.

CONNECT TO EX. 6" PWD#2 WATERLINE
LOCATED ON SITE. FENCE PANEL TO BE
REMOVED DURING CONSTRUCTION OF WATERLINE
AND THEN RETURNED AFTER INSTALLATION.



Call Before you DIG
TOLL FREE
1-800-344-7483
MISSOURI ONE-CALL SYSTEM INC

Underground facilities, structures and utilities have been plotted from available surveys, records and information, and therefore, do not necessarily reflect the actual existence, non-existence, size, type, number of, or location of these facilities, structures, and utilities. The Contractor shall be responsible for verifying the actual location of all underground facilities, structures, and utilities, either shown or not shown on these plans. The underground facilities, structures, and utilities shall be located in the field prior to any grading, excavation or construction of improvements. These provisions shall in no way absolve any party from complying with the Underground Facility Safety and Damage Prevention Act, Chapter 319, RSMo.



PROJECT TITLE:
**O'FALLON
DERMATOLOGY
LANDSCAPE
PLAN**

DATE: 3/5/12
DRAWN: J.R.S.
CHECKED: J.R.S.
PROJECT NO.: 11-1244
SHEET NO.: 9 OF 13

MUSLER ENGINEERING COMPANY
CIVIL ENGINEERING - PLANNING - LAND SURVEYING
32 Portwest Court, St. Charles, Missouri 63303
Telephone: (636) 916-0444
Fax: (636) 916-3444

DISCLAIMER OF RESPONSIBILITY
I hereby certify that the documents presented to be authorized by my seal and are limited to this sheet, and I hereby disclaim any responsibility for all other drawings, specifications, estimates, reports or other documents or instruments relating to or intended to be used for any part or parts of the architectural or engineering project or survey.



3.6.12
3.15.12
JEFFREY R. SMITH, P.E.
MO. P.E. # E-2001004672

PREPARED FOR:
ODERM, LLC
MR. TIM SPRAY
835 STRAWBERRY RIDGE DRIVE
O'FALLON, MISSOURI 63366
TELEPHONE: 314-378-2087
FAX: 636-240-1768
E-mail: tspray@yahoo.com

P & Z No.
00-27.17.02
City No.

Page No.
9