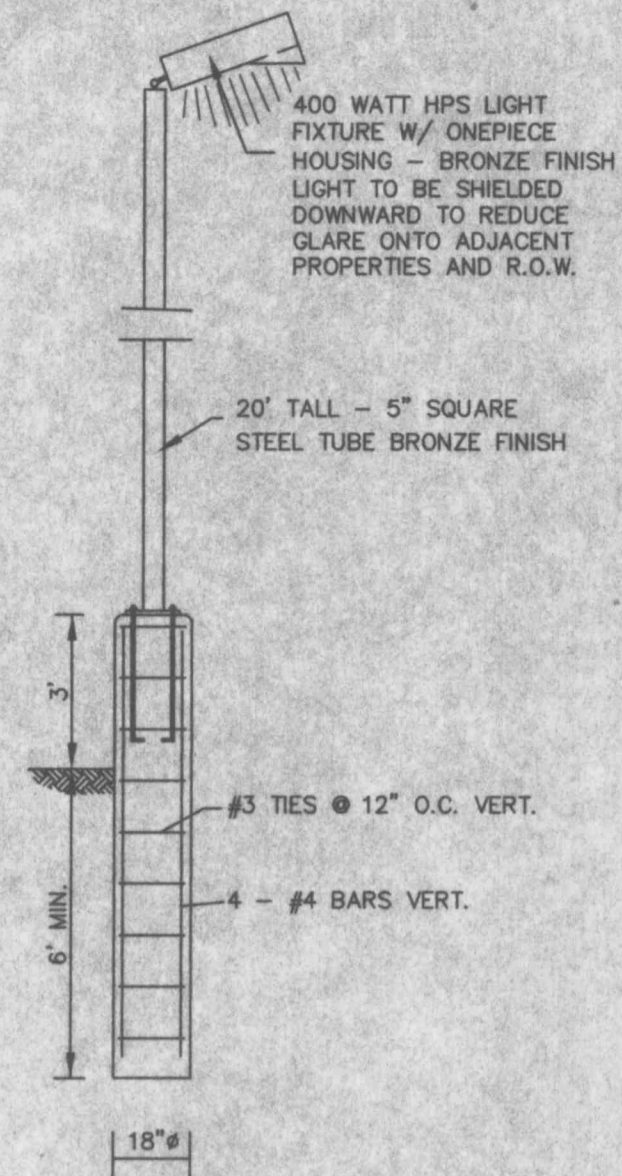
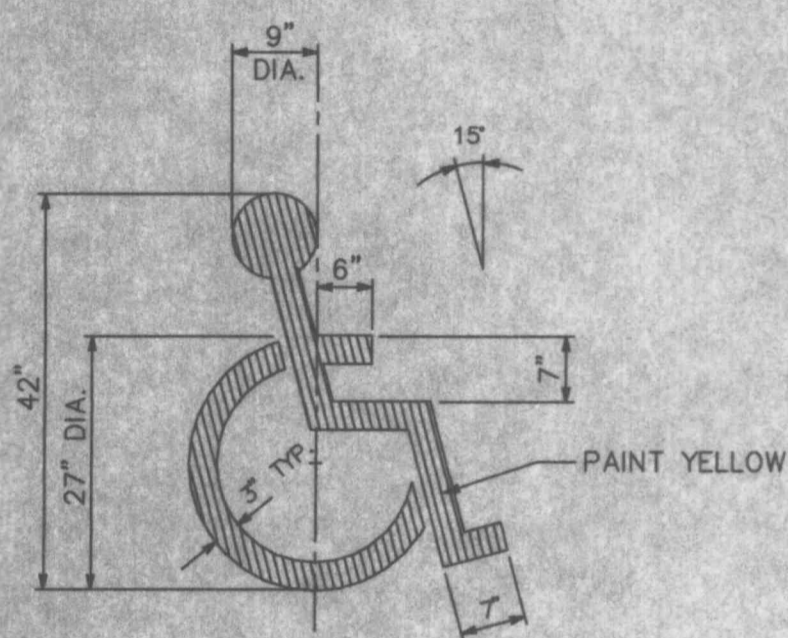


HANDICAPPED RAMP DETAIL
 NO SCALE



LIGHT POLE & BASE
 NO SCALE



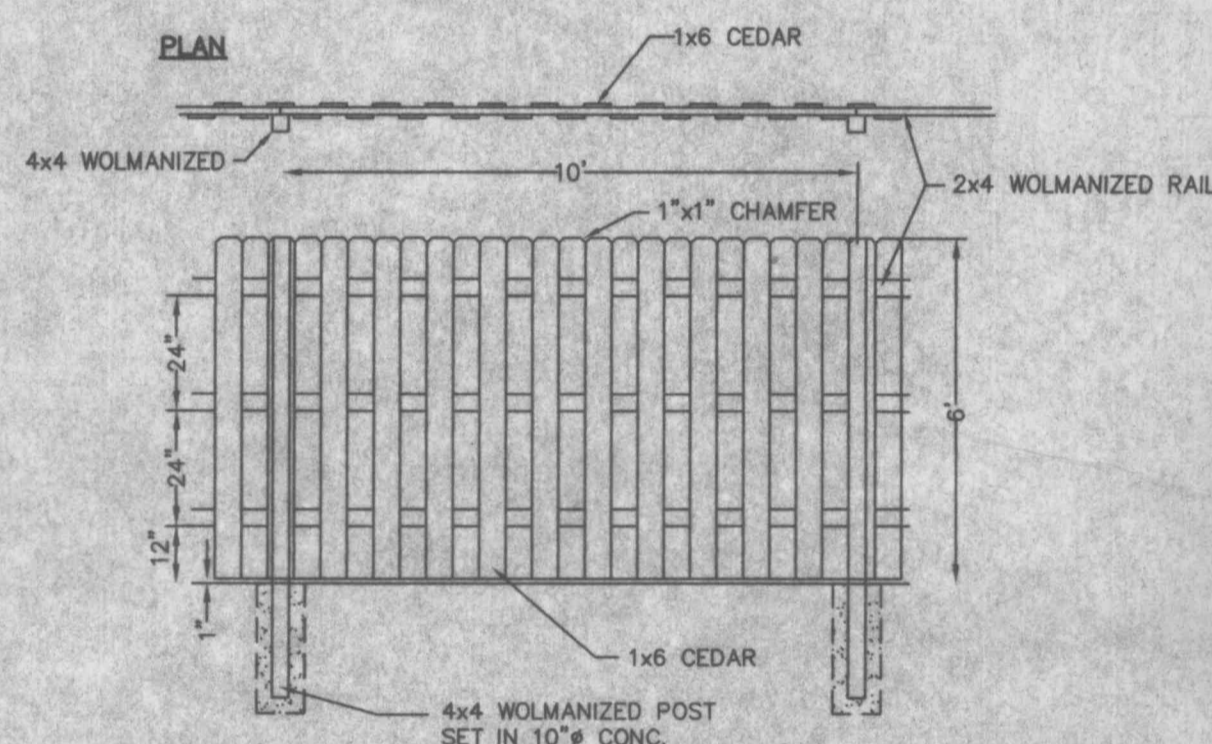
PAINTED HANDICAPPED PARKING SYMBOL
 NO SCALE



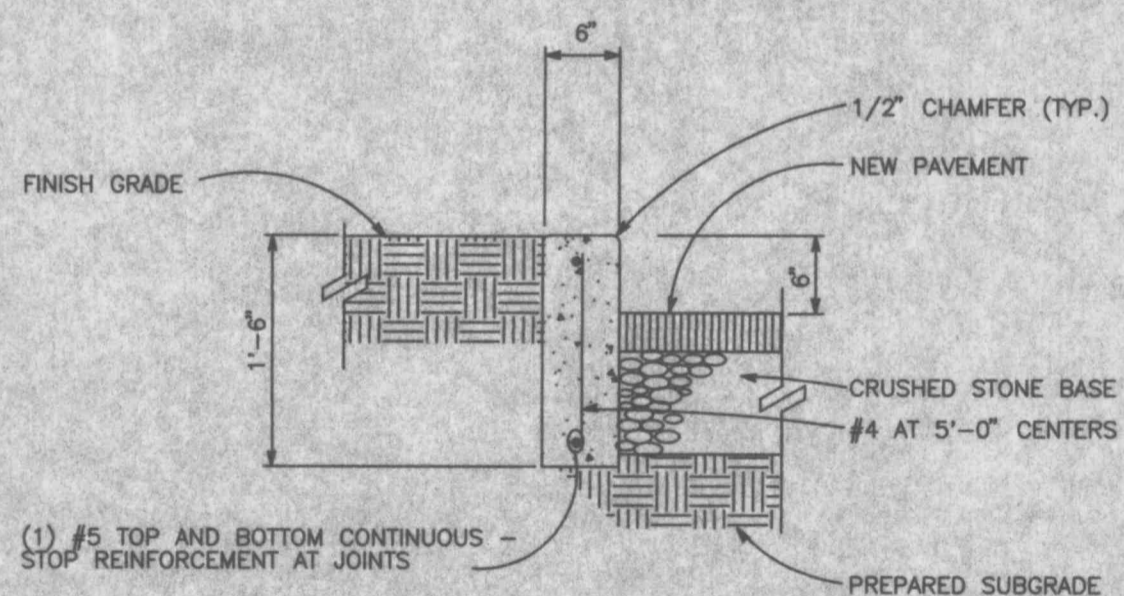
12" X 18" SIGN

STANDARD SIGN FACE, STANDARD HIGHWAY DEPARTMENT, OR CITY STREET DEPARTMENT GAUGE, BLACK OR BLUE LETTERING, GALVANIZED STEEL POST 9'-6" LONG, SET 3'-0" INTO GRADE, SET BOTTOM OF SIGN 5'-0" ABOVE FINISHED GRADE

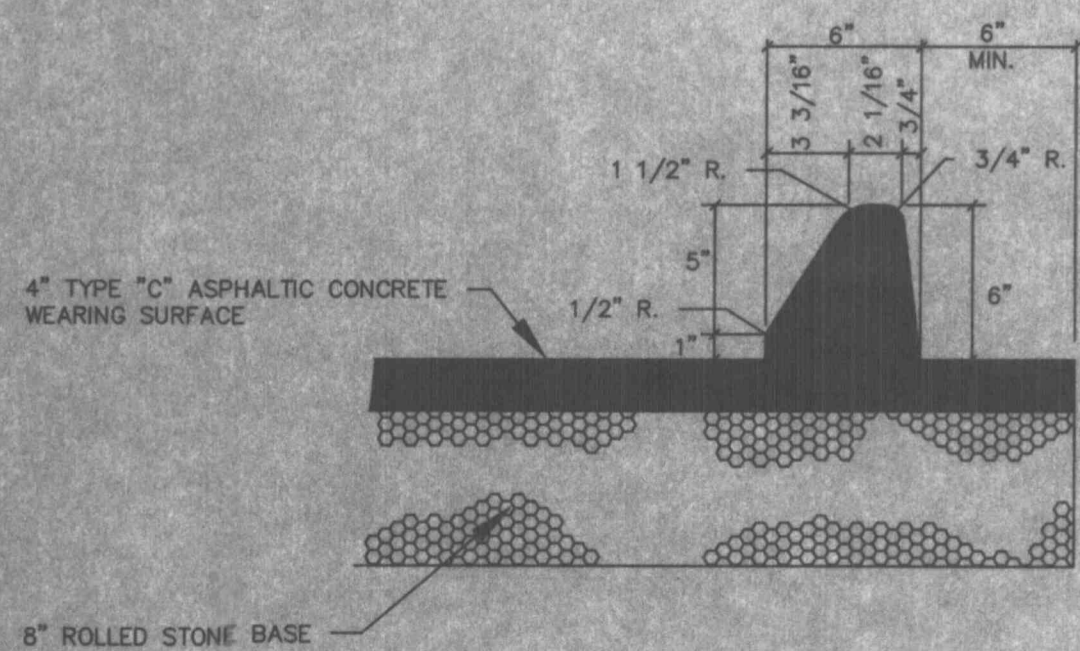
HANDICAP PARKING SIGN
 NO SCALE



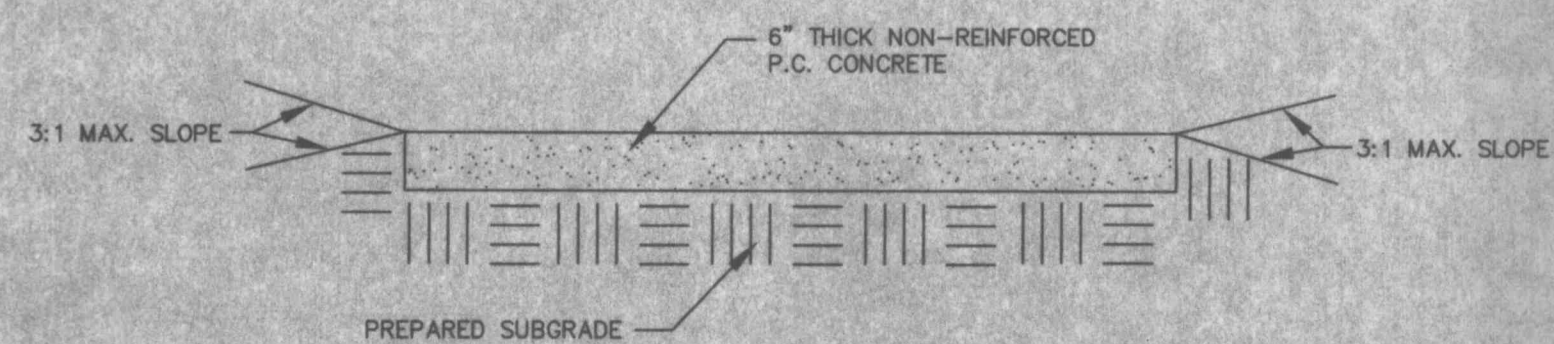
SCREEN FENCE DETAIL
 NO SCALE



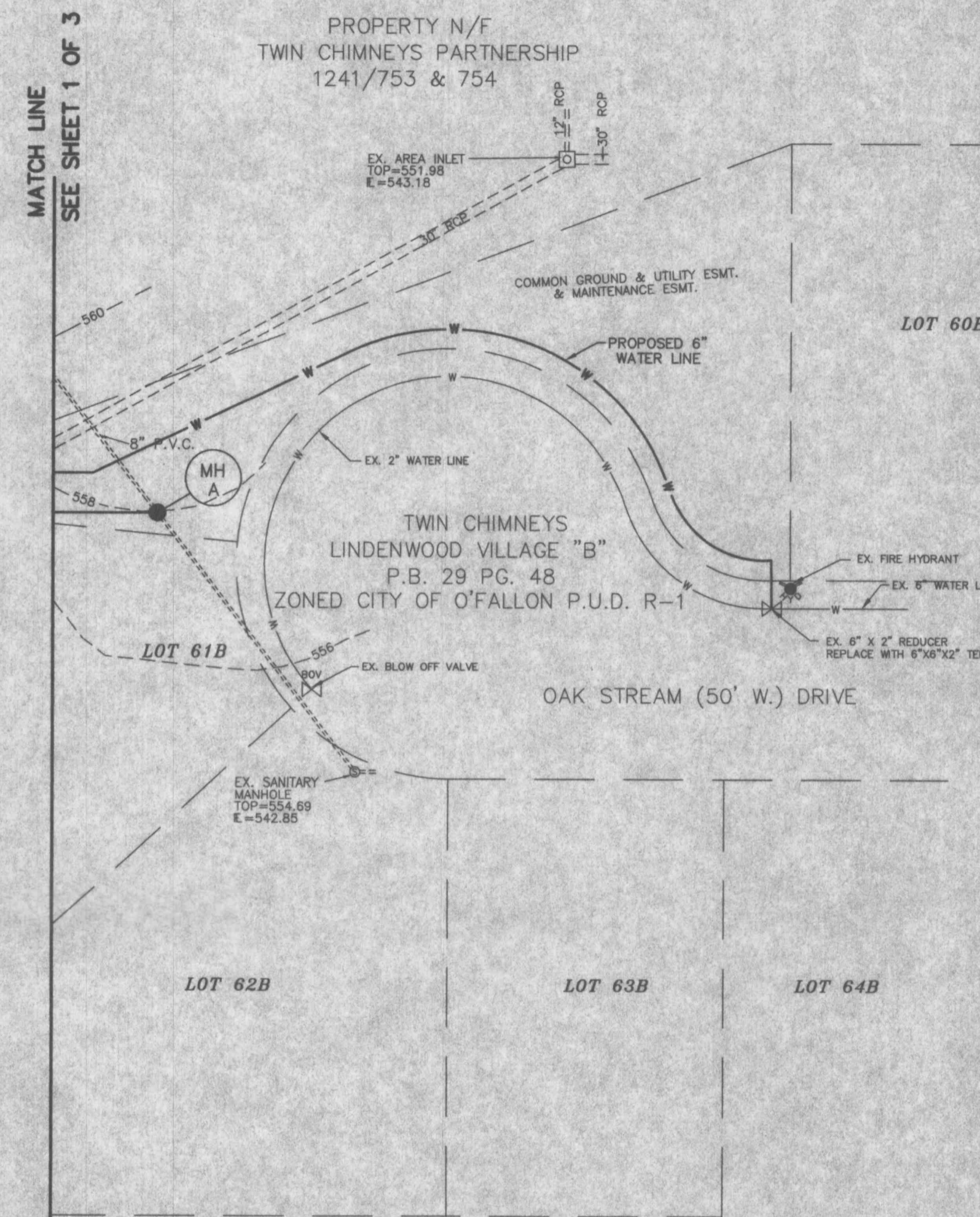
CONCRETE CURB DETAIL
 NO SCALE



ASPHALT CURB & PAVEMENT DETAIL
 NO SCALE



CONCRETE PAVEMENT DETAIL
 NOT TO SCALE



MATCH LINE
 SEE SHEET 1 OF 3

MATCH LINE
 SEE SHEET 1 OF 3